

489300

489400

489500

489600

489700

7293900

7293800

7293700

7293600

7293500



1:2,500



Lupin Project

NORTHWEST TERRITORIES

Content may not reflect
National Geographic's current
map policy. Sources: National

AS A MUTUAL PROTECTION TO OUR CLIENT, THE PUBLIC, AND OURSELVES, ALL REPORTS AND DRAWINGS ARE SUBMITTED FOR THE CONFIDENTIALITY OF OUR CLIENT FOR A SPECIFIC PROJECT. AUTHORIZATION FOR ANY USE AND/OR PUBLICATION OF THIS REPORT OR ANY DATA, STATEMENTS, CONCLUSIONS OR ABSTRACTS FROM OR REGARDING OUR REPORTS AND DRAWINGS, THROUGH ANY FORM OF PRINT OR ELECTRONIC MEDIA, INCLUDING WITHOUT LIMITATION, POSTING OR REPRODUCTION OF SAME ON ANY WEBSITE, IS RESERVED PENDING NORWEST'S WRITTEN APPROVAL. IF THIS REPORT IS ISSUED IN AN ELECTRONIC FORMAT, AN ORIGINAL PAPER COPY IS ON FILE AT NORWEST CORPORATION AND THAT COPY IS THE PRIMARY REFERENCE WITH PRECEDENCE OVER ANY ELECTRONIC COPY OF THE DOCUMENT, OR ANY EXTRACTS FROM OUR DOCUMENTS PUBLISHED BY OTHERS.



Lupin Mine Inc.

Existing Conditions

931-1-DWG01

Date: May 20, 2016

Drawn By: DM

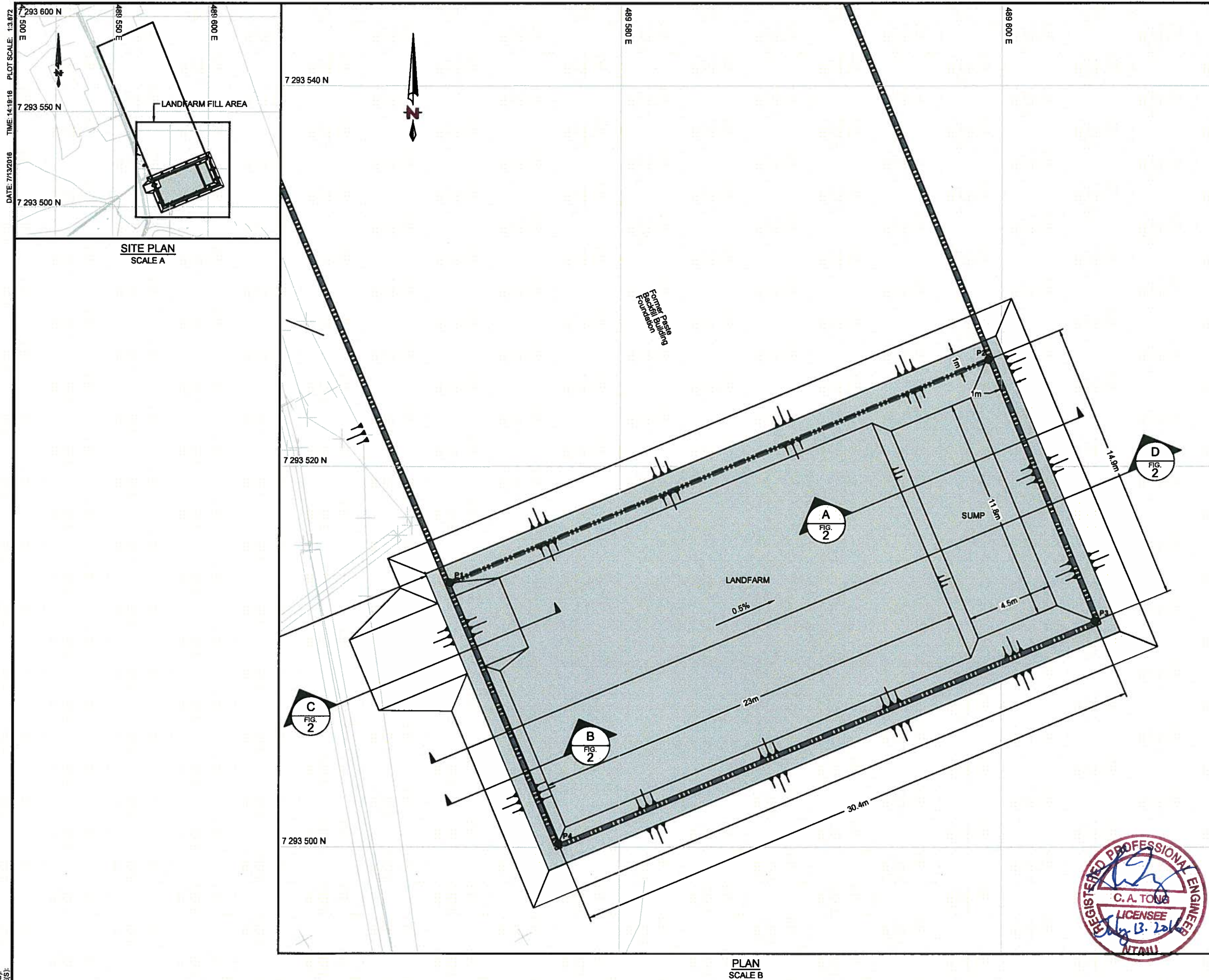
Chkd By: SW

Coordinate System: NAD 1983 UTM
Zone 12NProject #
931-1Revision
A

NORWEST

Document Path: G:\ProjectData\Mandalay Resource_931\931-1_Lupin\DiscGIS\1) Map Documents\Area_overview_image_overlay_new.mxd

FILENAME: Z:\2024\1_LUPIN MINE INC\DISCRAFTING\SITE PLAN\FIG.1 SITE PLAN_REV.CDWG
XREF FILE(S):
IMAGE FILE(S):



LEGEND

- EXISTING RING WALL OF FOUNDATION
- LINER

STAKEOUT TABLE

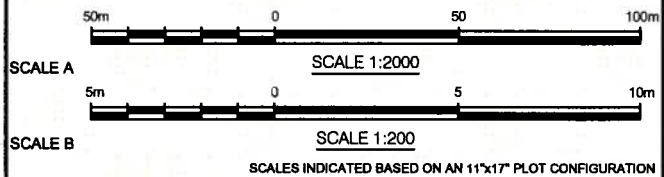
POINT	EASTING	NORTHING
P1	489,571	7,293,513
P2	489,599	7,293,525
P3	489,605	7,293,512
P4	489,577	7,293,500

VOLUMETRICS TABLE

ITEM	EST. QUANTITY
CONTAINMENT BERM (m ³)	140
BASE LEVELING (m ³)	140
ACCESS RAMP (m ³)	15
LINER (m ²)	545

NOTES

- THE DRAWINGS SHALL BE READ AND EXAMINED IN CONJUNCTION WITH THE LANDFARM CONSTRUCTION AND LINER PLACEMENT (931-1-CS002) MEMORANDUM.
- THE PRE-CONSTRUCTION SURVEY WORK SHALL BE DONE ACCORDING TO LANDFARM PRE-CONSTRUCTION SURVEY (931-1-CS001) MEMORANDUM.
- THE LANDFARM WILL BE SITUATED WITHIN THE SOUTHERN PORTION OF THE OLD PASTE BACKFILL PLANT FOUNDATION. THE DIMENSION OF THE LANDFARM IS APPROXIMATE AND IT WILL BE FIELD FITTED ONTO THE FOUNDATION PAD BASED ON SITE CONDITIONS.
- ANY POTENTIAL HOLES OR EXISTING DUCT WORKS WITHIN THE BASE OF THE CONCRETE FOUNDATION SHALL BE SEAL WITH CEMENT. IF THESE HOLES ARE FILL WITH DEBRIS THEN THEY SHALL BE EXCAVATED TO A MINIMUM 0.3m BELOW GRADE AND SEAL WITH CEMENT.
- MARK ALL LOCATIONS OF REPAIRED HOLES ON A PLAN.
- THE CONSTRUCTION FILL SHALL BE A CLEAN SAND AND GRAVEL MATERIAL THAT IS FREE OF SHARP DEBRIS AND PARTICLES. THE FINAL SURFACE OF THE LANDFARM SHALL BE COMPACTED AND SEALED TO MINIMIZE EROSION.
- THE LINER IS A PRE-FABRICATED 1-PIECE LINER THAT DOES NOT REQUIRE ON SITE SEAMING. IT SHALL BE MANUALLY DEPLOYED WITH CAREFUL MACHINE ASSISTANCE TO PREVENT DAMAGE TO THE SUBGRADE AND LINER.
- PHOTOGRAPHIC DOCUMENTATION SHALL BE TAKEN AT EACH OF THE FOLLOWING KEY POINTS:
 - ORIGINAL FOUNDATION CONDITIONS PRIOR TO ANY CONSTRUCTION, WITH MEASUREMENT REFERENCE ON THE HEIGHT OF THE RING WALL.
 - INDIVIDUAL PHOTOGRAPHS ON POTENTIAL HOLES OR DUCT WORK FOUND, PRIOR TO ANY WORK. SEPARATE SET OF PHOTOGRAPHS OF THE HOLES AFTER CLEARING/EXCAVATION BELOW GRADE. FOLLOW UP WITH PHOTOGRAPHS ON THE SEALED HOLES.
 - FINISHED EARTHWORK PRIOR TO LINER DEPLOYMENT.
 - INSTALLED LINER PRIOR TO LOADING OF CONTAMINANTS.
- KEY HOLD POINT: ENGINEER MUST CARRY OUT AN INSPECTION ON THE LINER AND EARTHWORK PRIOR TO LOADING OF CONTAMINANTS. NO FURTHER WORK SHALL BE DONE PRIOR INSPECTION OF THE FINISHED LANDFARM.
- THE LOADING OF CONTAMINANT AND OPERATION OF THE LANDFARM SHALL BE DONE ACCORDING TO THE LANDFARM OPERATIONAL STRATEGY (931-1) MEMORANDUM.



C	2016-07-13	ISSUED IN DRAFT	SC	SW	PK	AT
B	2016-06-28	ISSUED IN DRAFT	SC	AT	CK	BE
REV.	DATE	DESCRIPTION	OWN	DSG	CHK	APP

LUPIN MINE INC.

LANDFARM PROJECT

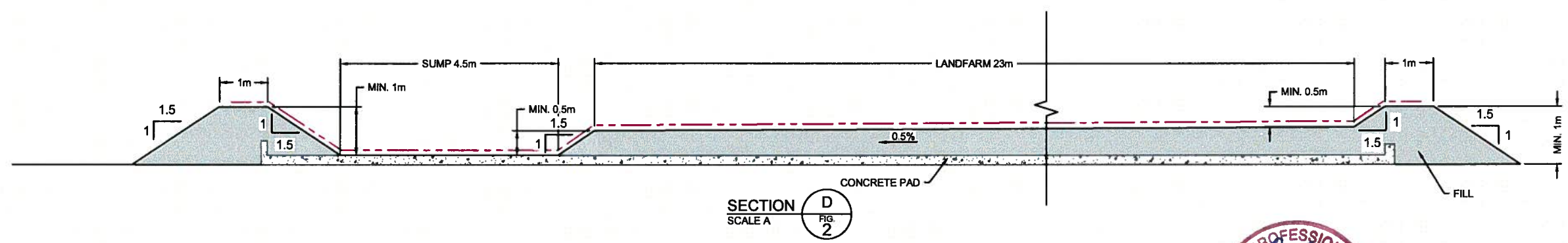
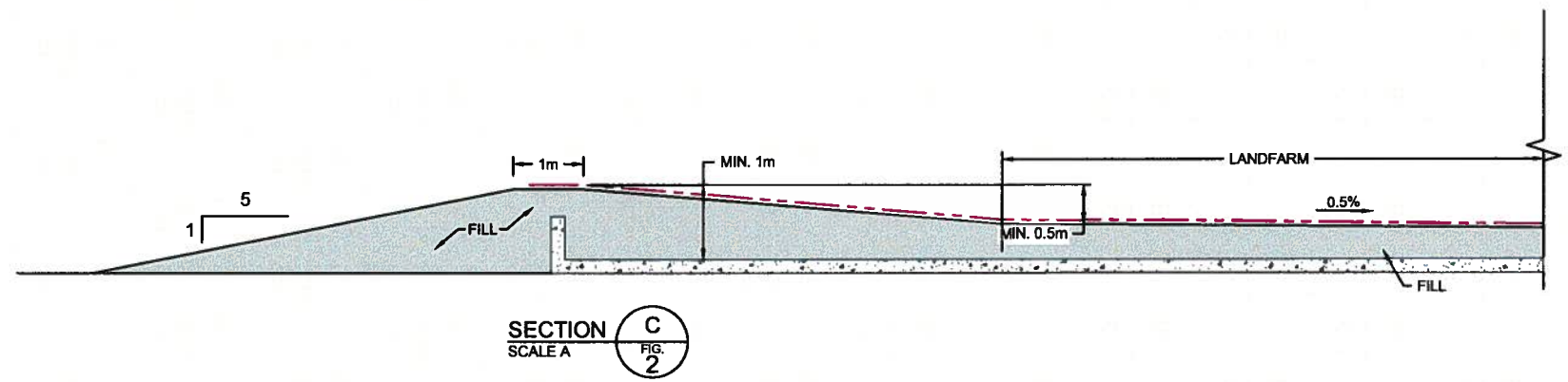
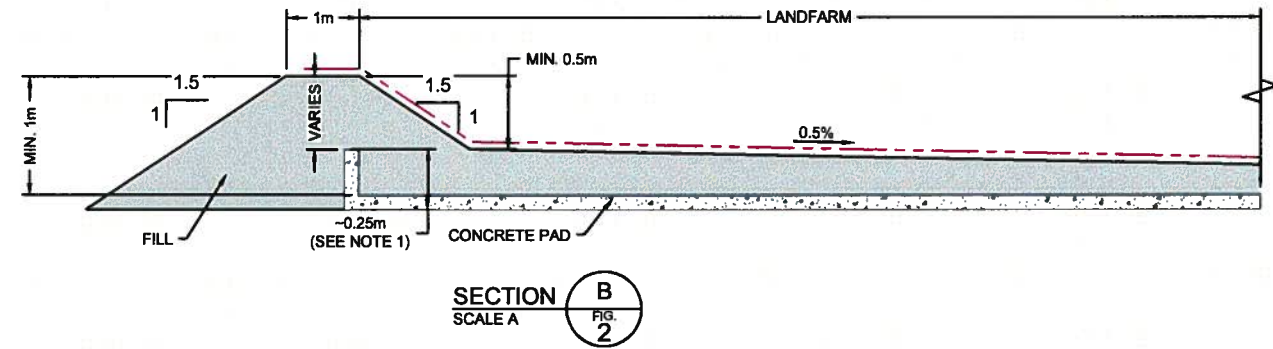
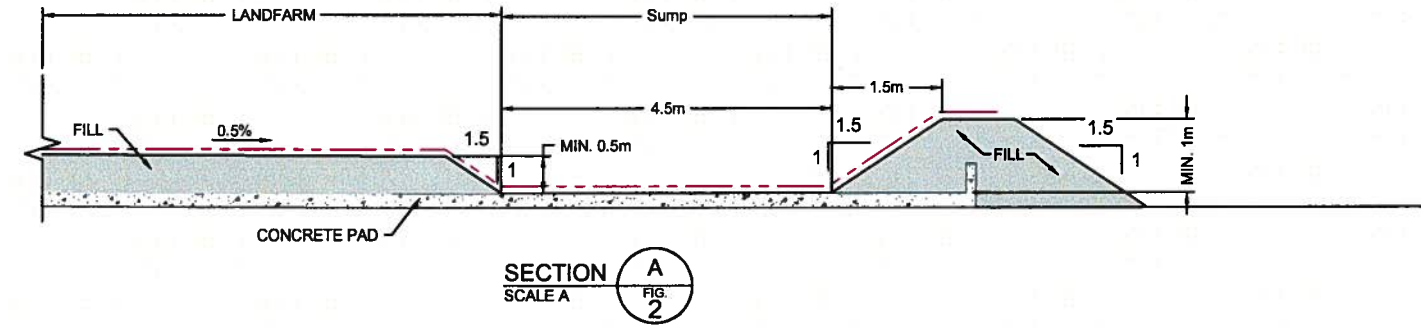
SCALE:	AS SHOWN	LANDFARM FILL PLAN VIEW			
DATE:	2016-07-13				
CO-ORD. SYS.:	UTM NAD83 ZONE 12N				
DRWN BY:	SC				
DSGN BY:	SW				
REVD BY:	PK				
APPD BY:	AT				
		PROJECT NO.:	DWG. NO.:	REV.:	
		NORWEST 931-1	02	C	

FILENAME: Z:\02441_LUPIN MINE INC\DISCRAFT\GITE PLAN\FIG.2 TYPICAL SECTIONS_REV.C.DWG
XREF FILE(S):
IMAGE FILE(S):

DATE: 7/13/2018 TIME: 14:18:17 PLOT SCALE: 1:3.872

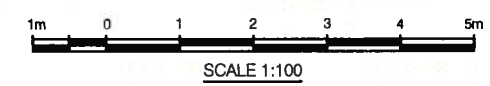
NOTES

1. SUFFICIENT COMPACTED BACKFILL SHALL BE PLACED OVER THE CONCRETE RING WALL THAT DOES NOT MEET THE MINIMUM 1m HEIGHT.



LEGEND

- LINER
- CONCRETE FOUNDATION AND RING WALL
- FILL



SCALES INDICATED BASED ON AN 11"x17" PLOT CONFIGURATION									
C	2016-07-13	ISSUED FOR CONSTRUCTION			SC	SW	PK	AT	
B	2016-05-26	ISSUED IN DRAFT			SC	AT	CK	SE	
REV.	DATE	DESCRIPTION			DWN	DES	CHK	APP	
LUPIN MINE INC.									
LANDFARM PROJECT									
SCALE:		AS SHOWN		LUPIN MINE TYPICAL SECTIONS					
DATE:		2016-07-13							
CO-ORD. SYS.:		UTM NAD83 ZONE 12N							
DRWN BY:		SC							
DSGN BY:		SW							
REVD BY:		PK		<div>NORWEST</div>					
APP'D BY:		AT							
				PROJECT NO.:		DWG. NO.:		REV.:	
				931-1		03		B	