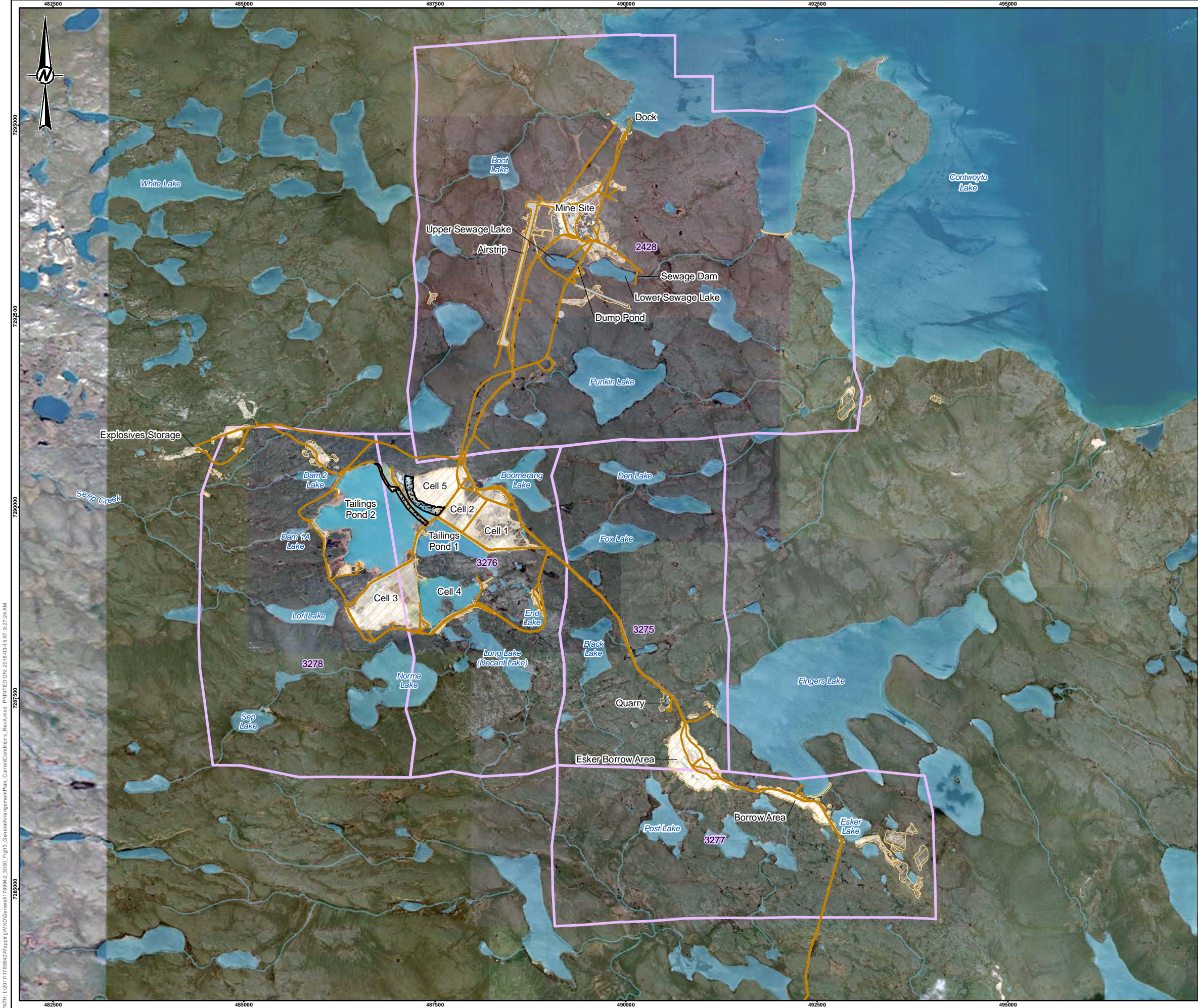


FIGURE 2





**LEGEND**

- ROAD
- WATERCOURSE
- APPROXIMATE 2017 RECLAMATION WORK
- DISTURBANCE FOOTPRINT
- INFRASTRUCTURE FOOTPRINT
- MINERAL LEASE BOUNDARY
- WATERBODY

**REFERENCE(S)**

HYDROGRAPHY, TOPOGRAPHY, AND TRANSPORTATION DATA OBTAINED FROM GEOGRATIS © DEPARTMENT OF NATURAL RESOURCES CANADA. ALL RIGHTS RESERVED. FOOTPRINT OBTAINED FROM CLIENT. IMAGE OBTAINED FROM GOOGLE EARTH © 2017 GOOGLE INC. USED WITH PERMISSION. GOOGLE AND GOOGLE LOGO ARE REGISTERED TRADEMARKS OF GOOGLE INC. IMAGERY DATE: SEPTEMBER 11, 2017, JANUARY 19, 2018, AND JANUARY 24, 2018. GOOGLE EARTH IMAGE IS NOT TO SCALE. DATUM: NAD83 PROJECTION: UTM ZONE 12

**CLIENT**

MANDALAY RESOURCES CORPORATION

**PROJECT**

LUPIN MINE CLOSURE

**TITLE**

GENERAL ARRANGEMENT PLAN - CURRENT CONDITIONS

|                             |            |            |
|-----------------------------|------------|------------|
| LUPIN MINES<br>INCORPORATED | YYYY-MM-DD | 2018-01-25 |
|                             | DESIGNED   | NC         |
|                             | PREPARED   | AA         |
|                             | REVIEWED   | KB         |
|                             | APPROVED   | KB         |

|             |         |      |        |
|-------------|---------|------|--------|
| PROJECT NO. | CONTROL | REV. | FIGURE |
| 1789942     | 3000    | A    | 3      |





**LEGEND**

- CONTOUR
- WATERCOURSE
- ROAD
- DISTURBANCE FOOTPRINT
- INFRASTRUCTURE FOOTPRINT
- REHABILITATED DISTURBED AREA
- WATERBODY

0 250 500  
1:15,000 METRES

**REFERENCE(S)**  
HYDROGRAPHY AND TOPOGRAPHY DATA OBTAINED FROM GEOGRATIS © DEPARTMENT OF NATURAL RESOURCES CANADA. ALL RIGHTS RESERVED. FOOTPRINT OBTAINED FROM CLIENT. IMAGE CAPTURED AUGUST 21, 2012, OBTAINED FROM CLIENT. DATUM: NAD83 PROJECTION: UTM ZONE 12

CLIENT  
MANDALAY RESOURCES CORPORATION

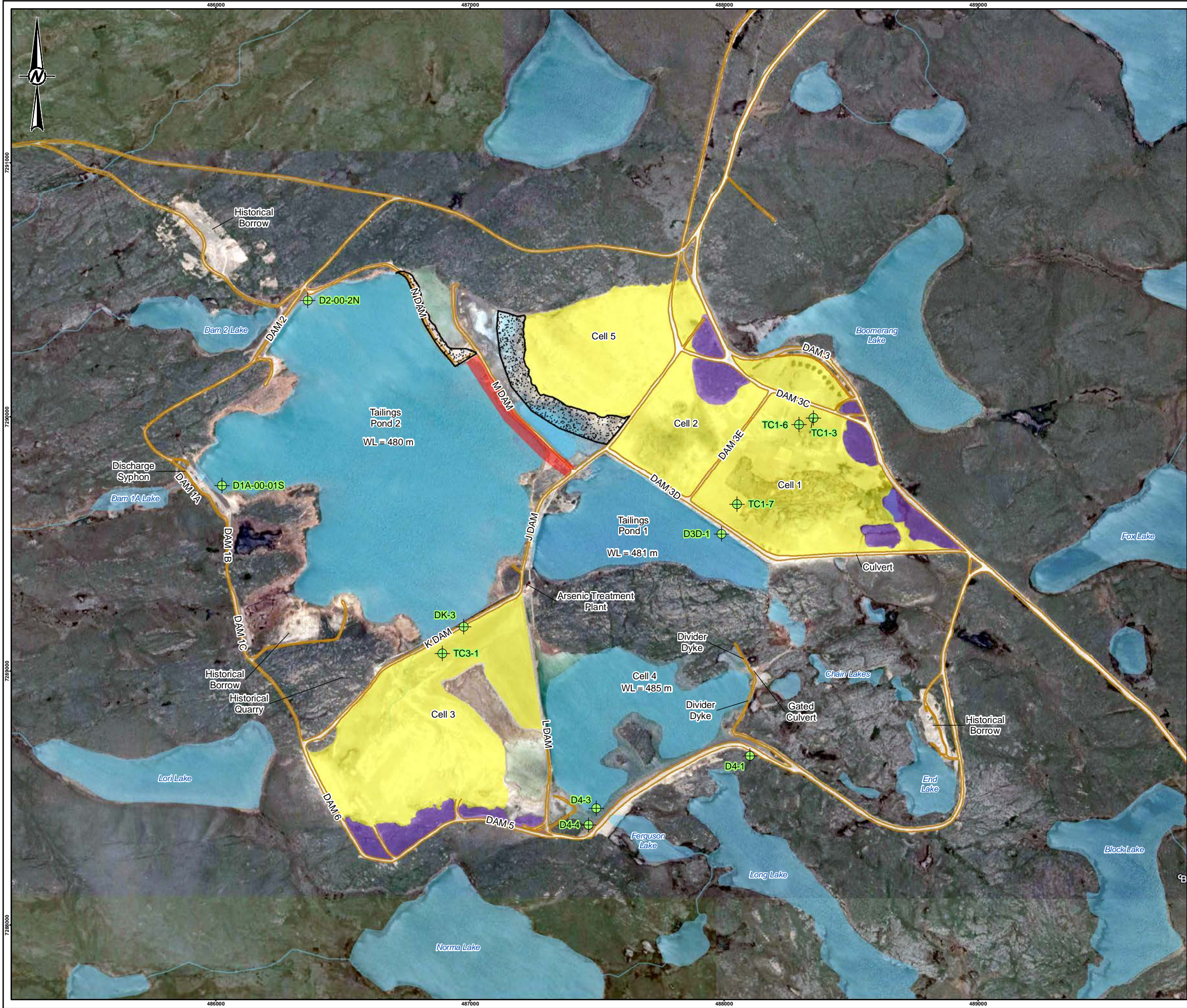
PROJECT  
LUPIN MINE CLOSURE

TITLE  
**MINE AND MILL SITE AREA – CURRENT CONDITIONS**

|                             |            |            |
|-----------------------------|------------|------------|
| LUPIN MINES<br>INCORPORATED | YYYY-MM-DD | 2018-01-25 |
|                             | DESIGNED   | NC         |
|                             | PREPARED   | AA         |
|                             | REVIEWED   | KB         |
|                             | APPROVED   | KB         |

|             |         |      |        |
|-------------|---------|------|--------|
| PROJECT NO. | CONTROL | REV. | FIGURE |
| 1789942     | 3000    | A    | 4      |





**LEGEND**

- ACTIVELY MONITORED THERMISTOR
- WATERCOURSE
- ROAD
- APPROXIMATE 2017 DAM REPAIR AND MAINTENANCE WORK
- APPROXIMATE 2017 RECLAMATION WORK
- PREVIOUSLY COMPLETED COVER
- TUNDRA
- WATERBODY

0 250 500  
1:15,000 METRES

**REFERENCE(S)**  
THERMISTOR LOCATIONS AND 2017 RECLAMATION WORKS OBTAINED FROM NORWEST CORP., JANUARY 26, 2018. HYDROGRAPHY AND TOPOGRAPHY DATA OBTAINED FROM GEOGRATIS © DEPARTMENT OF NATURAL RESOURCES CANADA. ALL RIGHTS RESERVED. FOOTPRINT OBTAINED FROM CLIENT. IMAGE OBTAINED FROM GOOGLE EARTH © GOOGLE INC. USED WITH PERMISSION. GOOGLE AND GOOGLE LOGO ARE REGISTERED TRADEMARKS OF GOOGLE INC. DATUM: NAD83 PROJECTION: UTM ZONE 12

CLIENT  
MANDALAY RESOURCES CORPORATION

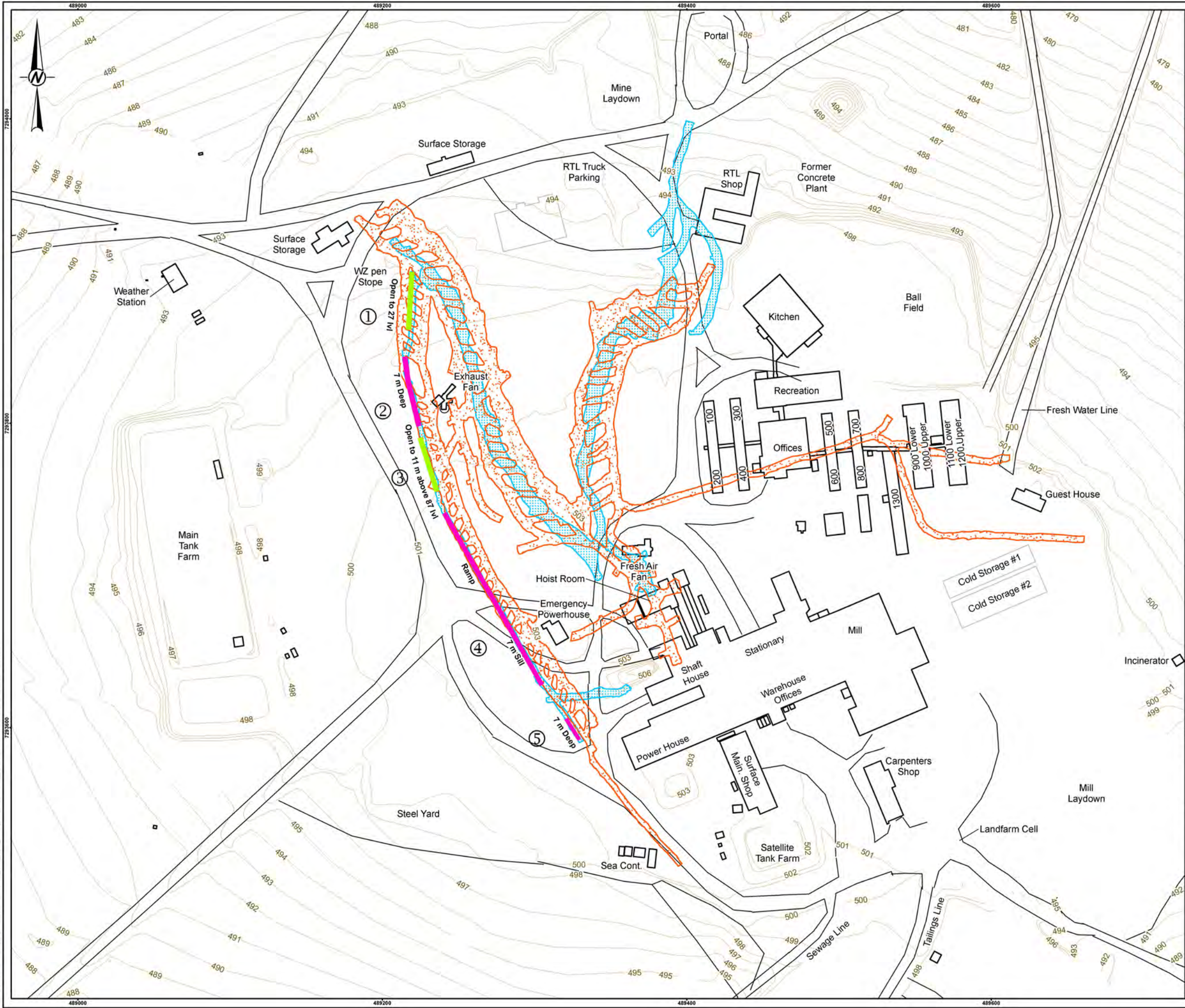
PROJECT  
LUPIN MINE CLOSURE

TITLE  
**TAILINGS CONTAINMENT AREA  
APPROXIMATE 2017 WORK AREAS**

|                             |            |               |
|-----------------------------|------------|---------------|
| LUPIN MINES<br>INCORPORATED | YYYY-MM-DD | 2018-01-30    |
|                             | DESIGNED   | NORWEST CORP. |
|                             | PREPARED   | AA            |
|                             | REVIEWED   |               |
|                             | APPROVED   |               |

|             |         |      |        |
|-------------|---------|------|--------|
| PROJECT NO. | CONTROL | REV. | FIGURE |
| 1789942     | 3000    | A    | 5      |





**LEGEND**

- ① WZ UNDERGROUND DISPOSAL KEY CROSS-SECTION LOCATION
- CONTOUR
- INFRASTRUCTURE FOOTPRINT
- 27 LEVEL ORE DRIFT PROJECTION
- 87 LEVEL ACCESS DRIFT PROJECTION
- WZ CROWN PILLAR PIT
- WZ OPEN STOPE

0 50 100  
1:2,500 METRES

**REFERENCE(S)**  
UNDERGROUND DISPOSAL AND FACILITY DATA OBTAINED FROM NORWEST CORP., JANUARY 26, 2018. HYDROGRAPHY AND TOPOGRAPHY DATA OBTAINED FROM GEOGRATIS © DEPARTMENT OF NATURAL RESOURCES CANADA. ALL RIGHTS RESERVED. FOOTPRINT OBTAINED FROM CLIENT.  
DATUM: NAD83 PROJECTION: UTM ZONE 12

**CLIENT**  
MANDALAY RESOURCES CORPORATION

**PROJECT**  
LUPIN MINE CLOSURE

**TITLE**  
UNDERGROUND MINE WORKING PLAN

|                                 |            |               |
|---------------------------------|------------|---------------|
| <b>LUPIN MINES INCORPORATED</b> | YYYY-MM-DD | 2018-01-25    |
|                                 | DESIGNED   | NORWEST CORP. |
|                                 | PREPARED   | AA            |
|                                 | REVIEWED   |               |
|                                 | APPROVED   |               |

|             |         |     |        |
|-------------|---------|-----|--------|
| PROJECT NO. | CONTROL | REV | FIGURE |
| 1789942     | 3000    | A   | 6      |





**LEGEND**

- CONTOUR
- WINTER ROAD
- WATERCOURSE
- ROAD
- DISTURBANCE FOOTPRINT
- WATERBODY

0 250 500  
1:15,000 METRES

**REFERENCE(S)**  
HYDROGRAPHY, TOPOGRAPHY, AND TRANSPORTATION DATA OBTAINED FROM GEOGRATIS © DEPARTMENT OF NATURAL RESOURCES CANADA. ALL RIGHTS RESERVED. FOOTPRINT OBTAINED FROM CLIENT. IMAGE OBTAINED FROM GOOGLE EARTH © 2017 GOOGLE INC. USED WITH PERMISSION. GOOGLE AND GOOGLE LOGO ARE REGISTERED TRADEMARKS OF GOOGLE INC. IMAGERY DATE: JANUARY 19, 2018. GOOGLE EARTH IMAGE IS NOT TO SCALE DATUM: NAD83 PROJECTION: UTM ZONE 12

**CLIENT**  
MANDALAY RESOURCES CORPORATION

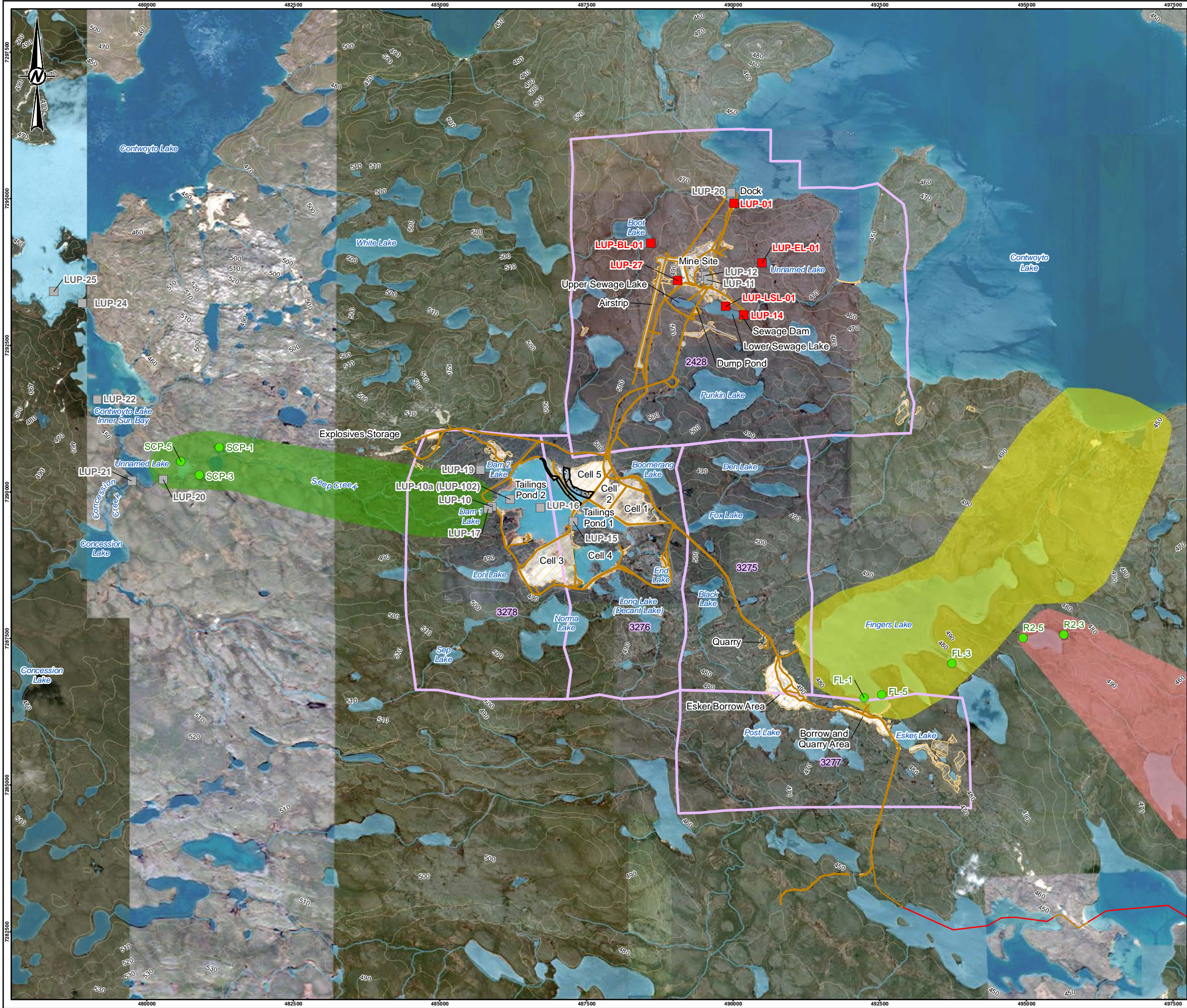
**PROJECT**  
LUPIN MINE CLOSURE

**TITLE**  
LOCATION OF BORROW PITS AND QUARRIES

|                             |            |            |
|-----------------------------|------------|------------|
| LUPIN MINES<br>INCORPORATED | YYYY-MM-DD | 2018-01-25 |
|                             | DESIGNED   | NC         |
|                             | PREPARED   | AA         |
|                             | REVIEWED   | KB         |
|                             | APPROVED   | KB         |

|             |         |      |        |
|-------------|---------|------|--------|
| PROJECT NO. | CONTROL | REV. | FIGURE |
| 1789942     | 3000    | A    | 7      |





**LEGEND**

- EEM MONITORING LOCATION
- IARP WATER SAMPLING AND DISCHARGE LOCATION
- INACTIVE WATER SAMPLING LOCATION
- CONTOUR
- ROAD
- WINTER ROAD
- WATERCOURSE
- APPROXIMATE 2017 RECLAMATION WORK
- DISTURBANCE FOOTPRINT
- INFRASTRUCTURE FOOTPRINT
- MINERAL LEASE BOUNDARY
- WATERBODY

**SAMPLING AREAS**

- EXPOSURE AREA
- REFERENCE AREA 1
- REFERENCE AREA 2

0 2 4  
1:65,000 KILOMETRES

**REFERENCE(S)**  
HYDROGRAPHY, TOPOGRAPHY, AND TRANSPORTATION DATA OBTAINED FROM GEOGRATIS © DEPARTMENT OF NATURAL RESOURCES CANADA. ALL RIGHTS RESERVED. FOOTPRINT OBTAINED FROM CLIENT. IARP MONITORING LOCATIONS DIGITIZED FROM FIGURE OBTAINED FROM NORWEST CORP., JANUARY 18, 2019. IMAGE OBTAINED FROM GOOGLE EARTH © 2017 GOOGLE INC. USED WITH PERMISSION. GOOGLE AND GOOGLE LOGO ARE REGISTERED TRADEMARKS OF GOOGLE INC. IMAGERY DATE: SEPTEMBER 11, 2017, JANUARY 19, 2018, AND JANUARY 24, 2018. GOOGLE EARTH IMAGE IS NOT TO SCALE. IMAGERY COPYRIGHT © 20150613, 20160630, 20160706, AND 20170623 ESRI AND ITS LICENSORS. SOURCE: MAXAR VIVID. USED UNDER LICENSE, ALL RIGHTS RESERVED. DATUM: NAD83 PROJECTION: UTM ZONE 12

**CLIENT**  
MANDALAY RESOURCES CORPORATION

**PROJECT**  
LUPIN MINE CLOSURE

**TITLE**  
MONITORING PROGRAM STATIONS

|                             |            |            |
|-----------------------------|------------|------------|
| LUPIN MINES<br>INCORPORATED | YYYY-MM-DD | 2020-09-25 |
|                             | DESIGNED   | NC         |
|                             | PREPARED   | AA         |
|                             | REVIEWED   | KB         |
|                             | APPROVED   | KB         |

|             |           |      |        |
|-------------|-----------|------|--------|
| PROJECT NO. | CONTROL   | REV. | FIGURE |
| 19136158    | 1000-1030 | 0    | 8      |





CLIENT  
MANDALAY RESOURCES CORPORATION

PROJECT  
LUPIN MINE CLOSURE

LUPIN MINES  
INCORPORATED

|            |            |
|------------|------------|
| YYYY-MM-DD | 2018-01-25 |
| DESIGNED   | NC         |
| PREPARED   | AA         |
| REVIEWED   | KB         |
| APPROVED   | KB         |

TITLE  
**HISTORICAL TCA WATER DISCHARGE TO THE ENVIRONMENT**

PROJECT NO.  
1789942

CONTROL  
3000

REV.  
A

FIGURE  
9





**LEGEND**

- CONTOUR
- FLOW DIRECTION
- ROAD
- WATERCOURSE
- CHANNEL EXCAVATION AND CLOSURE SPILLWAY
- DEMOLITION LANDFILL
- INFRASTRUCTURE FOOTPRINT
- LANDFILL
- REHABILITATED DISTURBED AREA
- WASTE ROCK COVERED
- WASTE ROCK REMOVED
- WATERBODY

0 250 500  
1:15,000 METRES

**REFERENCE(S)**  
HYDROGRAPHY AND TOPOGRAPHY DATA OBTAINED FROM GEOGRATIS © DEPARTMENT OF NATURAL RESOURCES CANADA. ALL RIGHTS RESERVED. FOOTPRINT OBTAINED FROM CLIENT. IMAGE CAPTURED AUGUST 21, 2012, OBTAINED FROM CLIENT. DATUM: NAD83 PROJECTION: UTM ZONE 12

CLIENT  
MANDALAY RESOURCES CORPORATION

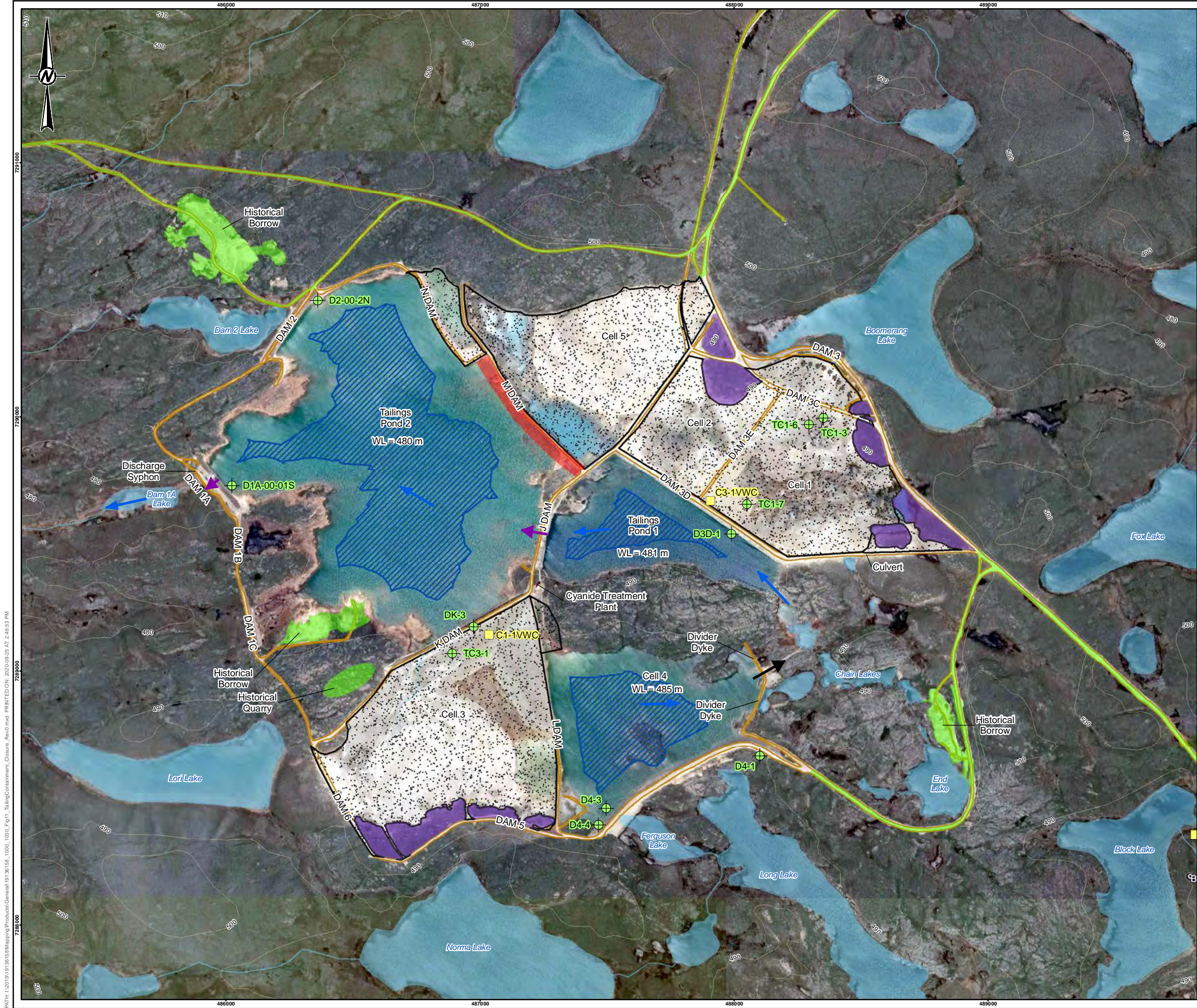
PROJECT  
LUPIN MINE CLOSURE

TITLE  
**MINE AND MILL SITE AREA – POST-CLOSURE**

|                             |            |            |
|-----------------------------|------------|------------|
| LUPIN MINES<br>INCORPORATED | YYYY-MM-DD | 2020-09-25 |
|                             | DESIGNED   | NC         |
|                             | PREPARED   | AA         |
|                             | REVIEWED   | --         |
|                             | APPROVED   | --         |

|             |           |      |        |
|-------------|-----------|------|--------|
| PROJECT NO. | CONTROL   | REV. | FIGURE |
| 19136158    | 1000-1030 | 0    | 10     |





**LEGEND**

- ACTIVELY MONITORED SOIL MOISTURE AND TEMPERATURE PROBE
- ACTIVELY MONITORED THERMISTOR
- CONTOUR
- CLOSURE SPILLWAY
- FLOW DIRECTION
- REMOVED CULVERT
- ROAD
- WATERCOURSE
- APPROXIMATE 2017 DAM REPAIR AND MAINTENANCE WORK
- APPROXIMATE TUNDRA AREA
- APPROXIMATE WATER LEVEL OF CLOSURE (TO BE CONFIRMED)
- REHABILITATED DISTURBED AREA
- TAILINGS COVER
- WATERBODY

**REFERENCE(S)**

THERMISTOR LOCATIONS AND CLOSURE PLAN OBTAINED FROM NORWEST CORP., JANUARY 26, 2018. HYDROGRAPHY AND TOPOGRAPHY DATA OBTAINED FROM GEOGRATIS © DEPARTMENT OF NATURAL RESOURCES CANADA. ALL RIGHTS RESERVED. FOOTPRINT OBTAINED FROM CLIENT. IMAGE OBTAINED FROM GOOGLE EARTH © GOOGLE INC. USED WITH PERMISSION. GOOGLE AND GOOGLE LOGO ARE REGISTERED TRADEMARKS OF GOOGLE INC. DATUM: NAD83 PROJECTION: UTM ZONE 12

**CLIENT**

MANDALAY RESOURCES CORPORATION

**PROJECT**

LUPIN MINE CLOSURE

**TITLE**

TAILINGS CONTAINMENT AREA - POST CLOSURE

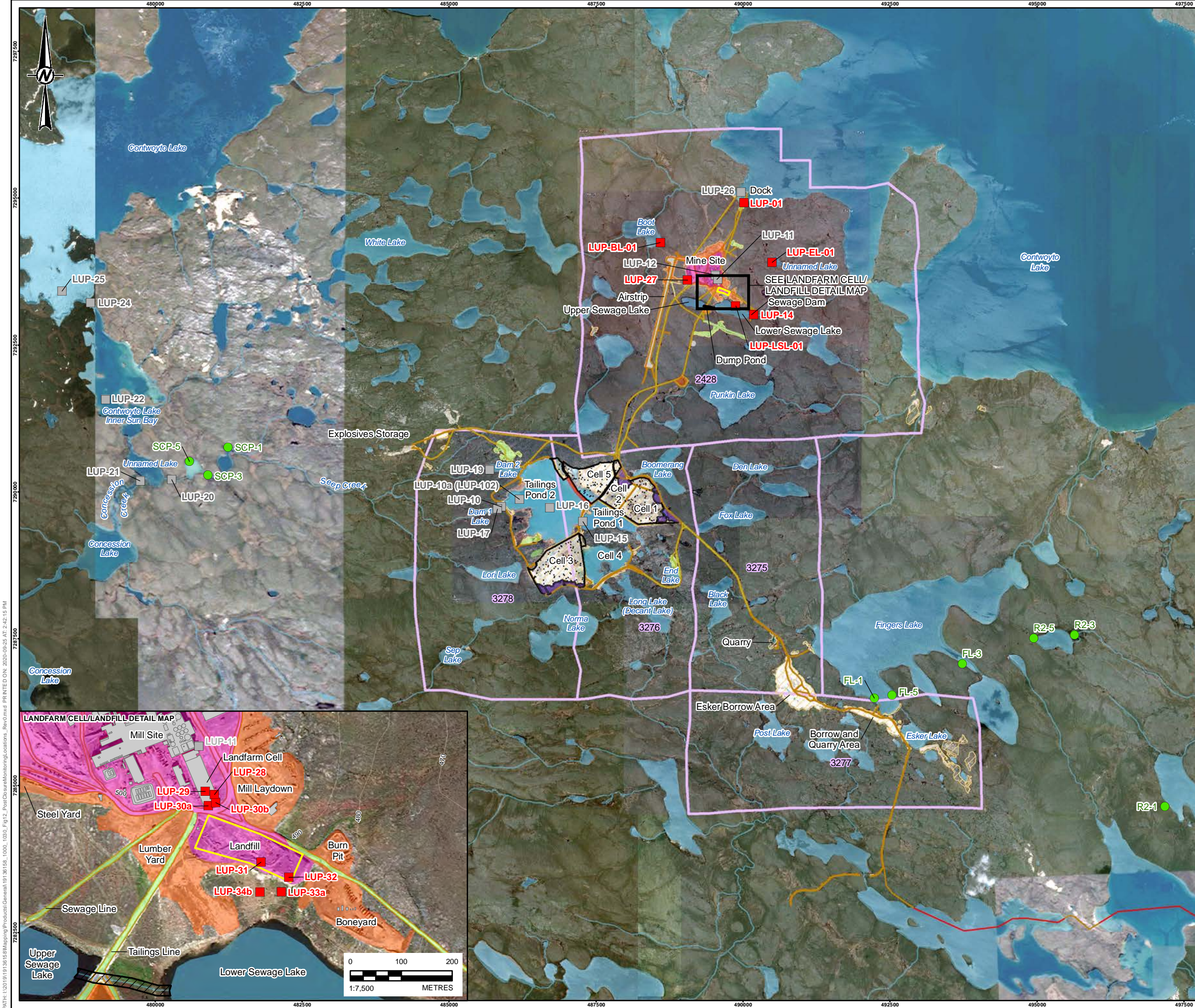
|                             |            |               |
|-----------------------------|------------|---------------|
| LUPIN MINES<br>INCORPORATED | YYYY-MM-DD | 2020-09-25    |
|                             | DESIGNED   | NORWEST CORP. |
|                             | PREPARED   | AA            |
|                             | REVIEWED   | --            |
|                             | APPROVED   | --            |

|             |           |      |        |
|-------------|-----------|------|--------|
| PROJECT NO. | CONTROL   | REV. | FIGURE |
| 19136185    | 1000-1030 | 0    | 11     |

PATH: I:\2018\19136185\Mapping\Products\General\19136185\_1000\_1030\_Fig11\_TailingsContainment\_Closure\_Rev0.mxd PRINTED ON: 2020-09-25 AT: 2:48:53 PM

IF THIS MEASUREMENT DOES NOT MATCH WHAT IS SHOWN, THE SHEET SIZE HAS BEEN MODIFIED FROM: ANSI B





**LEGEND**

- EEM MONITORING LOCATION
- IARP WATER SAMPLING AND DISCHARGE LOCATION
- INACTIVE WATER SAMPLING LOCATION
- ROAD
- WINTER ROAD
- WATERCOURSE
- DISTURBANCE FOOTPRINT
- MINERAL LEASE BOUNDARY
- INFRASTRUCTURE FOOTPRINT
- LANDFILL
- APPROXIMATE TUNDRA AREA
- APPROXIMATE 2017 DAM REPAIR AND MAINTENANCE WORK
- CHANNEL EXCAVATION AND CLOSURE SPILLWAY
- REHABILITATED DISTURBED AREA
- TAILINGS COVER
- WASTE ROCK COVERED
- WASTE ROCK REMOVED
- WATERBODY

**NOTE(S)**

LANDFARM MONITORING POINTS (LUP-28, LUP-29, LUP-30A, AND LUP-30B) AND LANDFILL MONITORING POINTS (LUP-31, LUP-32, LUP-33A, AND LUP-34B) ARE APPROXIMATE LOCATIONS.

**REFERENCE(S)**

HYDROGRAPHY, TOPOGRAPHY, AND TRANSPORTATION DATA OBTAINED FROM GEOGRATIS © DEPARTMENT OF NATURAL RESOURCES CANADA. ALL RIGHTS RESERVED. FOOTPRINT OBTAINED FROM CLIENT. IARP MONITORING LOCATIONS DIGITIZED FROM FIGURE OBTAINED FROM NORWEST CORP., JANUARY 18, 2019. IMAGE OBTAINED FROM GOOGLE EARTH © 2017 GOOGLE INC. USED WITH PERMISSION. GOOGLE AND GOOGLE LOGO ARE REGISTERED TRADEMARKS OF GOOGLE INC. IMAGERY DATE: SEPTEMBER 11, 2017, JANUARY 19, 2018, AND JANUARY 24, 2018. GOOGLE EARTH IMAGE IS NOT TO SCALE. IMAGERY COPYRIGHT © 20150613, 20160630, 20160706, AND 20170623 ESRI AND ITS LICENSORS. SOURCE: MAXAR VIVID. USED UNDER LICENSE, ALL RIGHTS RESERVED. DATUM: NAD83 PROJECTION: UTM ZONE 12

**CLIENT**

MANDALAY RESOURCES CORPORATION

**PROJECT**

LUPIN MINE CLOSURE

**TITLE**

POST-CLOSURE MONITORING PROGRAM STATIONS

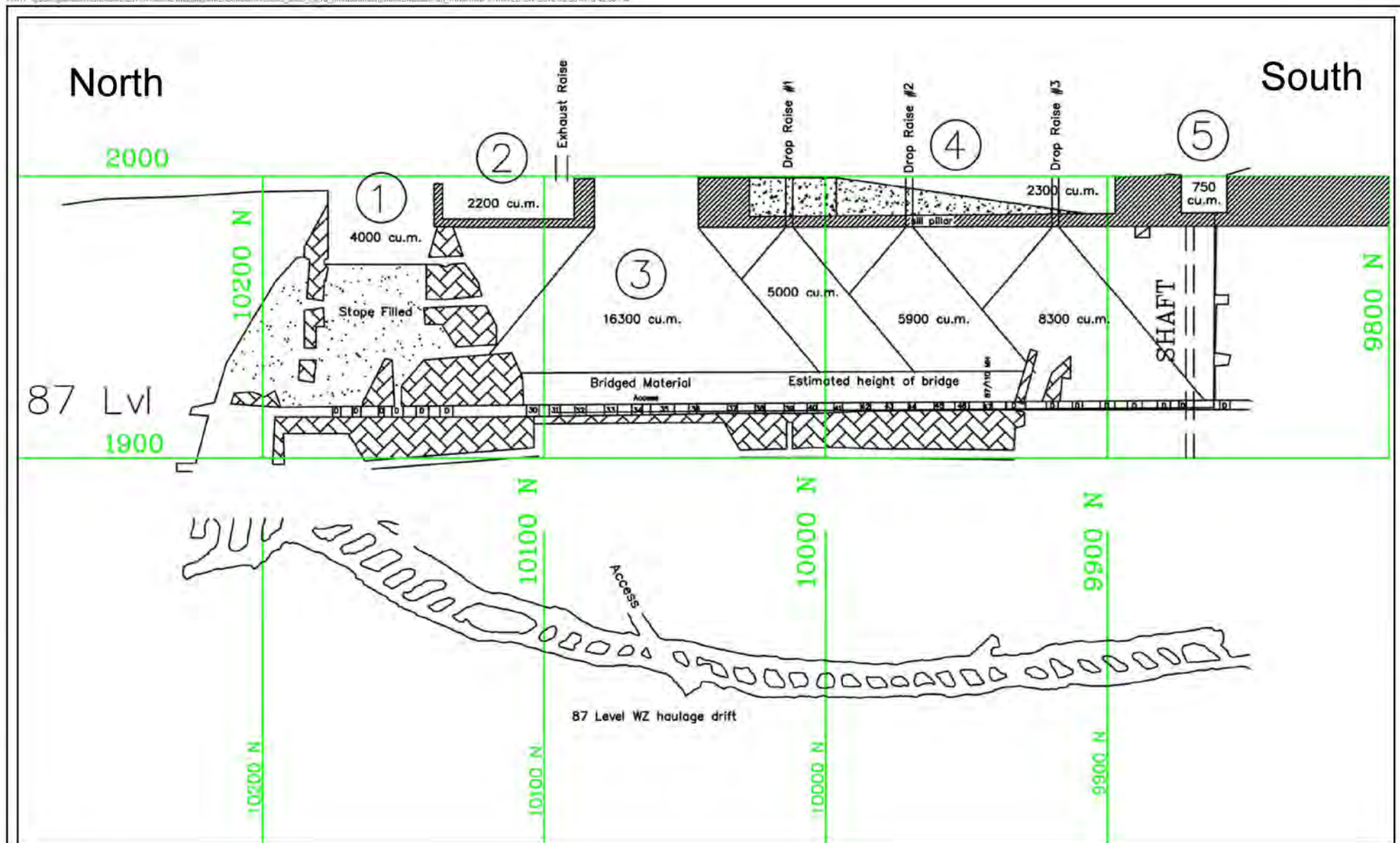
|            |            |
|------------|------------|
| YYYY-MM-DD | 2020-09-25 |
| DESIGNED   | NC         |
| PREPARED   | AA         |
| REVIEWED   | KB         |
| APPROVED   | KB         |

|             |           |      |        |
|-------------|-----------|------|--------|
| PROJECT NO. | CONTROL   | REV. | FIGURE |
| 19136185    | 1000-1030 | 0    | 12     |

PATH: I:\2019\19136185\Maping\Products\General\19136185\_1000\_1030\_Fig12\_PostClosureMonitoringLocations\_Rev0.mxd PRINTED ON: 2020-09-25 AT 2:42:15 PM

IF THIS MEASUREMENT DOES NOT MATCH WHAT IS SHOWN, THE SHEET SIZE HAS BEEN MODIFIED FROM: ANSI B 25mm





CLIENT  
MANDALAY RESOURCES CORPORATION

PROJECT  
LUPIN MINE CLOSURE

CONSULTANT  
  
LUPIN MINES  
INCORPORATED

YYYY-MM-DD: 2018-03-08  
DESIGNED: NORWEST CORP.  
PREPARED: DBM  
REVIEWED: ###  
APPROVED: ###

TITLE  
**KINROSS 2006 WEST ZONE CROWN PILLAR STOPES  
UNDERGROUND DISPOSAL PLAN**

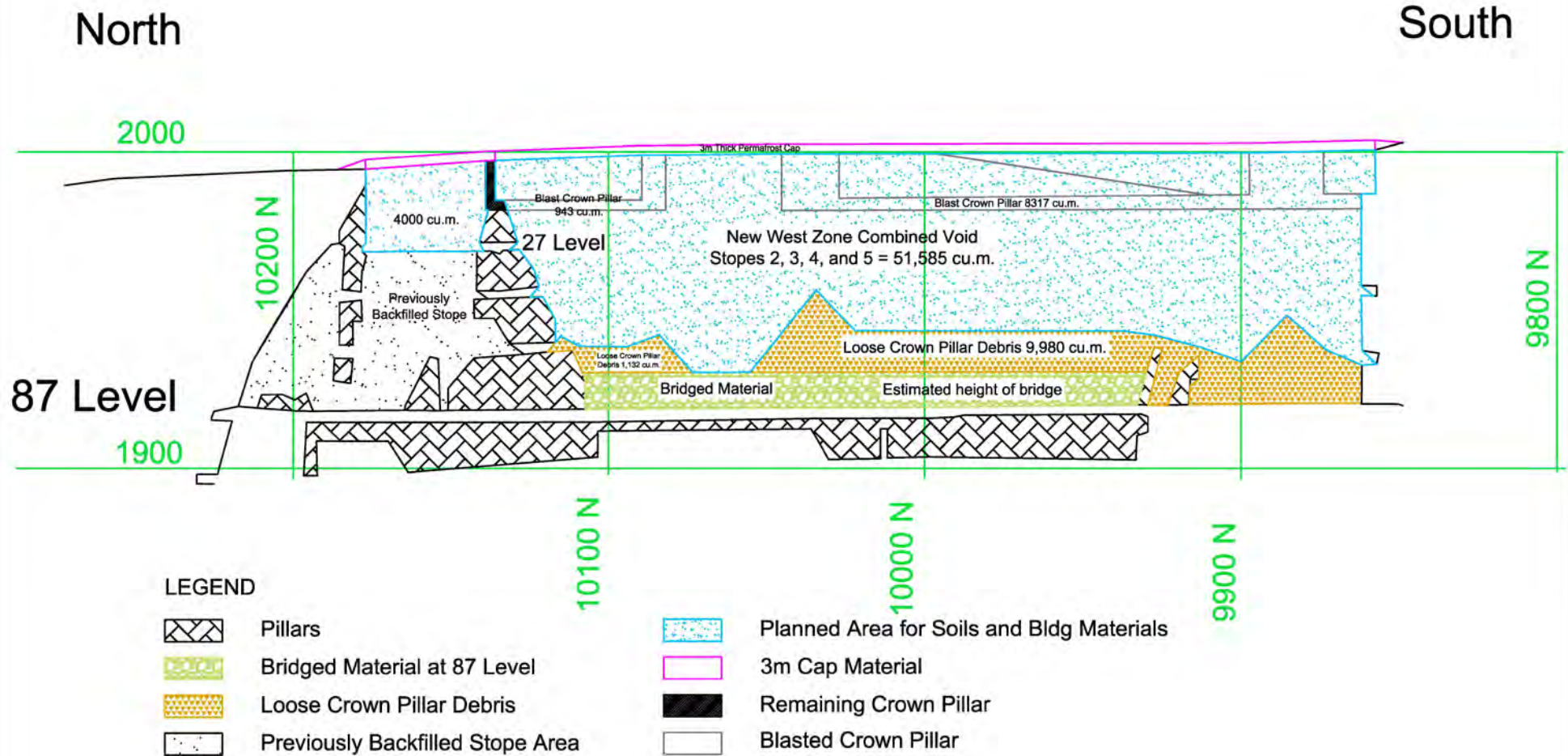
PROJECT NO  
1789942

CONTROL  
3000

REV  
A

FIGURE  
13





CLIENT  
MANDALAY RESOURCES CORPORATION

CONSULTANT  
  
LUPIN MINES  
INCORPORATED

|            |               |
|------------|---------------|
| YYYY-MM-DD | 2018-03-08    |
| DESIGNED   | NORWEST CORP. |
| PREPARED   | DBM           |
| REVIEWED   | ####          |
| APPROVED   | ####          |

PROJECT  
LUPIN MINE CLOSURE

TITLE  
**FCRP EXPANDED WEST ZONE UNDERGROUND DISPOSAL  
PLAN**

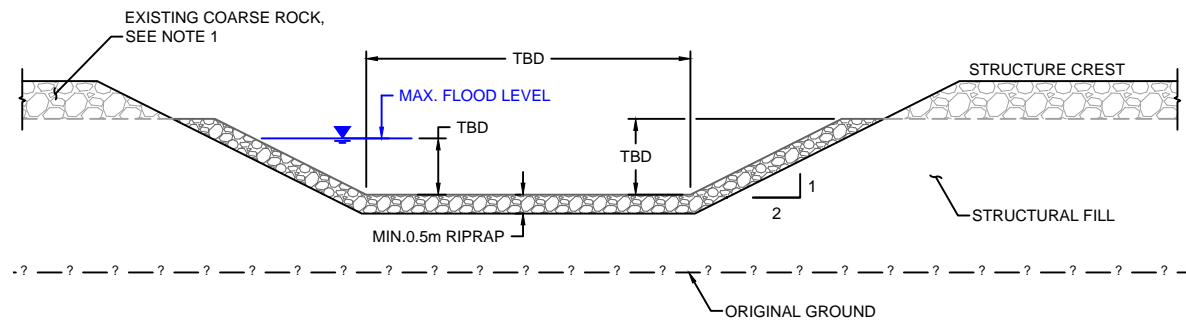
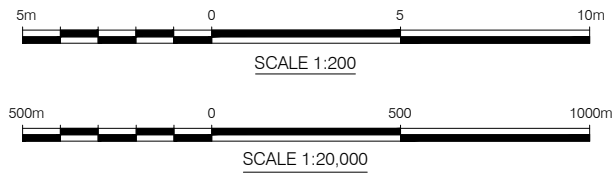
|                        |                 |           |              |
|------------------------|-----------------|-----------|--------------|
| PROJECT NO.<br>1789942 | CONTROL<br>3000 | REV.<br>A | FIGURE<br>14 |
|------------------------|-----------------|-----------|--------------|



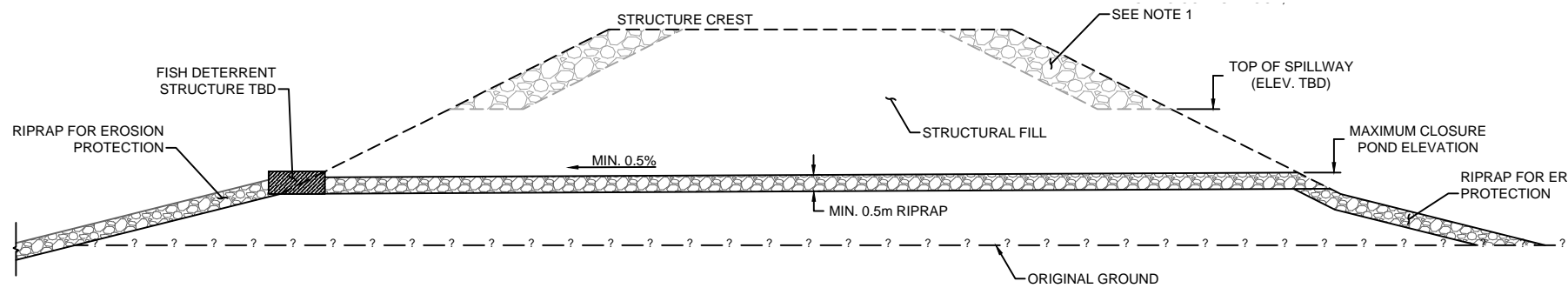
LEGEND

THERMISTORS STATUS

- ACTIVELY MONITORED
- MONITORED DURING DSR-NO CALIBRATION DATA
- UNLOCATED-LOCATION ESTIMATED FROM HISTORICAL MAP
- VOLUMETRIC WATER CONTENT SENSOR STRINGS



SECTION A-A'  
SCALE 1:200



SECTION B-B'  
SCALE 1:200



PLAN VIEW  
SCALE 1:20,000

NOTES

- COARSE ROCK ABOVE THE FLOOD LEVEL ON THE UPSTREAM AND DOWNSTREAM OF THE DAM WILL BE SALVAGE TO BE USED AS RIPRAP FOR SPILLWAY CONSTRUCTION. THE EXCAVATION WILL BE CONTOURED TO ENSURE STABILITY.

SCALES INDICATED BASED ON AN 11"x17" PLOT CONFIGURATION

LUPIN MINES INC.

FINAL CLOSURE AND RECLAMATION PLAN

TAILINGS CONTAINMENT AREA CLOSURE  
SPILLWAYS CONCEPTUAL PLAN AND  
CROSS-SECTIONS

|               |            |
|---------------|------------|
| SCALE:        | AS SHOWN   |
| DATE:         | 2020-09-16 |
| CO-ORD. SYS.: | UTM83-12   |
| DRWN BY:      | KM         |
| DSGN BY:      | -          |
| REVD BY:      | AT         |
| APPD BY:      | SE         |



PROJECT NO.:  
129500081

FIG. NO.:  
15

REV.:  
B