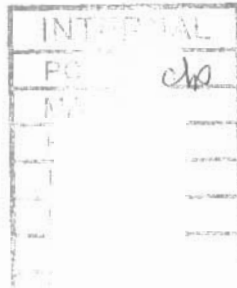


Lupin Operation
9818 Edmonton International Airport
Edmonton, AB T5J 2T2 Canada

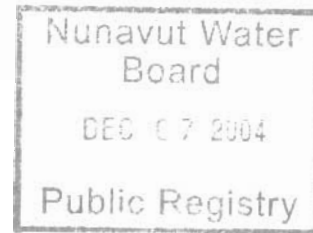
Telephone: (780) 890-8797
Fax: (780) 890-8814

November 11, 2004

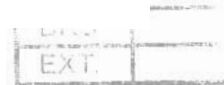
Executive Director
Nunavut Water Board
P.O. Box 119
Gjoa Haven, NU
X0B 1J0



Our File: NWB1LUP0008 Annual04
Your File: Water Register
NWB1LUP0008



Dear Sir:



**RE: KINROSS Gold Corporation (Echo Bay Mines Ltd.), Lupin Operation
Water License NWB1ULU0008, 2004 Annual Geotechnical Inspection**

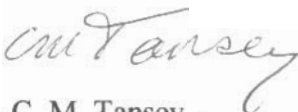
As partial fulfillment of Part D, Item 6(g) of Water License NWB1LUP0008, please find attached 3 copies of the report **"2004 Geotechnical Inspection of Perimeter Tailings Dams; Lupin Mine, Nunavut"**.

This inspection was carried out by Mr. James W. Cassie, M.Sc., P.Eng. with BGC Engineering Inc. of Calgary, Alberta on September 8th and 9th, 2004. A site inspection memo was left with site staff outlining items requiring maintenance following the inspection visit.

The inspection confirmed that the perimeter dams are in good condition. The maintenance requirements identified were minor in nature, comprising grading of windrows formed on some dam crests and backfilling of some erosion gullies. The required actions identified in the report have been addressed and are summarized in the following table. As all repairs have been completed, the implementation plan as requested within Item 6(g) of the License is considered to have been completed within this report as there are no further items to be addressed.

Should you have any questions or comments regarding this notification, please feel free to contact me at 780-890-8797 (Lupin), or email mike.tansey@kinross.com.

Yours truly,



C. M. Tansey
Reclamation Manager, Lupin

Incl.

3 copies of 2004 BGC Lupin Mine Geotechnical Report

cc B. Bried

2004 GEOTECHNICAL INSPECTION FINDINGS SUMMARY AND RESPONSE

<u>LOCATION</u>	<u>ISSUE</u>	<u>WORK COMPLETED</u>	<u>DATE COMPLETED</u>
Dam 1A	Minor cracking adjacent to syphons Small sinkhole in access road	None required Backfilled	N/A Sep/04
Dam 1C	Small sinkhole on downstream face	Backfilled	Sep/04
Dam 4	Erosional gullies on downstream face Windrows on crest edges	Backfilled with rip rap Graded out	Sep/04 Sep/04
Dam 5	Erosional gullies on downstream slope Windrows on crest edges	Backfilled with rip rap Graded out	Sep/04 Sep/04
Dam 6	Reduced freeboard due to cover on cell	Berm added to upstream edge of cell to control spring runoff	Sep/04



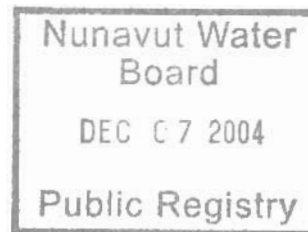
BGC ENGINEERING INC.
AN APPLIED EARTH SCIENCES COMPANY

KINROSS GOLD CORPORATION

2004 GEOTECHNICAL INSPECTION PERIMETER TAILINGS DAMS

LUPIN MINE NUNAVUT

FINAL



INTERNAL	
PC	up
MA	
FO	
LA	
ES	
ST	
TAT	
TA2	
IN	
CH	
BRD	
EXT.	

PROJECT NO.: 0256-009-02
DATE: NOVEMBER 8, 2004

DISTRIBUTION LIST:
KINROSS GOLD CORP.
BGC CALGARY
BGC VANCOUVER

4 COPIES
2 COPIES
1 COPY

**BGC ENGINEERING INC.**

AN APPLIED EARTH SCIENCES COMPANY

Suite 1605-840 7th Ave. S.W.
Calgary, Alberta
Canada T2P 3G2
Tel: (403) 250-5185
Fax: (403) 250-5330

Project No. 0256-009-02
November 8, 2004

Mr. M. Tansey, P.Eng. – Reclamation Manager
Kinross Gold Corporation
Lupin Operation
9818 International Airport
Edmonton, Alberta
T5J 2T2

Re: 2004 Report on Annual Geotechnical Inspection
Perimeter Tailings Dams, Lupin Mine, Nunavut

Dear Mike:

Please find attached our FINAL report on the annual geotechnical inspection of the perimeter tailings dams at Lupin Mine, which was carried out on September 8 and 9, 2004. A site inspection memo was left with your site staff outlining items requiring maintenance following the inspection visit.

Thank you to you and your staff for the hospitality shown during the site visit. If there are any questions regarding this report, please contact the undersigned at your convenience.

Yours truly,
BGC ENGINEERING INC.

per:

James W. Cassie, M.Sc., P.Eng.
Specialist Geotechnical Engineer
(direct line 403/250-5185 ext. 103)

encl.: Final Report

JWC/sf

TABLE OF CONTENTS

1.	Introduction.....	1
2.	Tailings Containment Area Operation Description.....	1
3.	Climatic Conditions	3
4.	Inspection Conditions and Approach.....	3
	4.1 General.....	3
	4.2 Instrumentation.....	4
5.	Findings and Conclusions	4
6.	Closure	15
	References	16

LIST OF TABLES

Table 1 Summary of Summer Water Levels within TCA	2
---	---

LIST OF FIGURES

Figure 1	Lupin Mine Location Map
Figure 2	Tailings Containment Area Plan
Figure 3	Comparison of Monthly Temperature Means to 2003 & 2004
Figure 4	Comparison of Monthly Precipitation Means to 2003 & 2004
Figure 5	Dam 1A Inspection Photos
Figure 6	Dam 1B Inspection Photos
Figure 7	Dam 1C Inspection Photos
Figure 8	Dam 2 Inspection Photos
Figure 9	Dam 3 Inspection Photos
Figure 10	Dam 4 Inspection Photos
Figure 11	Dam 5 Inspection Photos
Figure 12	Dam 6 Inspection Photos

LIST OF APPENDICES

Appendix 1	Site Inspection Memo
Appendix 2	Thermistor Plots for Various Dams

LIMITATIONS OF REPORT

This report was prepared by BGC Engineering Inc. (BGC) for Kinross Gold Corporation. The material in it reflects the judgment of BGC staff in light of the information available to BGC at the time of report preparation. Any use which a Third Party makes of this report, or any reliance on decisions to be based on it are the responsibility of such Third Parties. BGC Engineering Inc. accepts no responsibility for damages, if any, suffered by any Third Party as a result of decisions made or actions based on this report.

As a mutual protection to our client, the public, and ourselves, all reports and drawings are submitted for the confidential information of our client for a specific project and authorization for use and / or publication of data, statements, conclusions or abstracts from or regarding our reports and drawings is reserved pending our written approval.

1. INTRODUCTION

Lupin Mine, owned and operated by Kinross Gold Corporation, is located 285 km south-east of Kugluktuk and 400 km north-east of Yellowknife on Contwoyto Lake, as illustrated on Figure 1. Kinross's Nunavut Water Board's License (NWB1LUP0008) requires that the tailings containment area (TCA) be inspected annually by a qualified Geotechnical Engineer. As such, Mr. Mike Tansey, P.Eng., Reclamation Manager for Lupin Mine, requested that BGC Engineering Inc. (BGC) conduct an inspection of the tailings facility perimeter embankments. A proposal to conduct this inspection, dated June 27, 2004, was submitted and Requisition No. L 63506 was provided on July 19, 2004 as authorization to proceed.

This inspection and the preparation of a report are required in partial satisfaction of the Lupin Mine Water License obligations. Conditions in the Water License that apply to the annual inspection are as follows:

- a freeboard limit of 1.0 m should be maintained at all times;
- seepage from the TCA be minimised;
- any seepage that occurs should be collected and returned immediately;
- any erosion of the facilities should be addressed immediately; and
- the annual inspection report should be forwarded to the Water Board within 60 days of the inspection date.

Based on the visual inspection and a review of monitoring data the geotechnical performance of the structure is assessed. Any deficiencies and points of concern are brought to the attention of Kinross.

Previous design, as-built and annual inspection reports by Geocon Inc., Golder Associates Ltd. and BGC Engineering Inc. should be reviewed for information, observations and recommendations prior to 2004.

2. TAILINGS CONTAINMENT AREA OPERATION DESCRIPTION

As illustrated on Figure 2, tailings storage at Lupin Mine utilises a number of low embankments which are arranged to provide five cells for solids accumulation, some supernatant water storage within these cells, supernatant runoff storage accumulation (Pond 1) and an adjacent area (Pond 2) for transport water conditioning and staged release. In that none of the tailings water is recycled to the mill, aged water is typically transferred from Pond 2 to the environment once every second year (usually beginning mid-July). Following this discharge, tailings water is transferred from Pond 1 to Pond 2 for subsequent ageing. During the transfer, water treatment chemicals are added, if required.

Geocon (1982) provides as-built information for Dams 1A, 1B, 1C, 2 and 4A (later a portion of the much larger Dam 4) that were all built up to elevation 485 m during the 1981 construction period. The dam embankments were constructed of silty sand till with a liner on the upstream side. The liner is keyed into the underlying permafrost.

Golder Associates (1992) provides dam design information for Dams 4, 5 and 6 and the End Lake Dam (which was never constructed). For these dams, a geosynthetic liner is installed within the upstream portion of the embankment and then anchored into the frozen foundation, except for Dam 4. On Dam 4, the liner extends 15 m upstream from the upstream toe. For each of these dams, the top of the liner was situated 0.5 m below the physical crest of the dams. Dam 4 has a Run-of-Mine toe drain to collect embankment seepage, should it occur.

Operations at the Lupin mine were suspended in August 2003 and re-started in March 2004. During the period of shutdown, fresh water was continuously pumped through the tails line to keep the line from freezing. This water was collected in Cell 5. Following start-up, tailings were pumped into Cell 5, and the N Dam portion of Cell 5 to the northwest. A large portion of Cell 3 is in the process of being covered with esker gravel for closure, but tailings deposition to that cell resumed in September. In a typical year, compliant water within Pond 2 is discharged to the environment via the siphons over Dam 1A. When storage capacity is created in Pond 2, Pond 1 water is transferred in using the siphons over J-Dam. By the time of the annual inspection trip, 773,968 cubic metres of water had been transferred from Pond 1 to Pond 2. Water transfer took place between July 2 and 22, 2004. Table 1 summarises the water level elevations within the TCA:

Table 1 Summary of Summer Water Levels within TCA
(Data Supplied by Kinross Gold Corp.)

Location	June 26, 2004 Water Elevation (m)	July 26, 2004 Water Elevation (m)	Sept. 25, 2004 Water Elevation (m)
Pond 1	486.56	482.72	482.70
Pond 2	483.34	484.22	484.38
Cell 4	488.84	487.87	485.76
Cell 5	489.82	488.27	empty

Water levels in the Ponds are within historical limits and 2 m (or more) of freeboard is being maintained on Dams 1A and 2.

3. CLIMATIC CONDITIONS

Figures 3 and 4 provide a graphical representation of the 2003 and 2004 (to-date) monthly temperature and precipitation values versus the long-term mean values (which have been recorded since 1982). Figure 3 indicates that the 2003 temperature values were slightly warmer (MAAT of -9.9°C versus -11.0°C long term) than typical for the year, while values for 2004 (to June) were typical to slightly cooler than typical. Figure 4 illustrates that precipitation in 2003 was near normal however, July 2004 was significantly drier than normal while August was significantly wetter.

4. INSPECTION CONDITIONS AND APPROACH

4.1 General

Mr. Jim Cassie, P. Eng., conducted the inspection on September 8 and 9, 2004. The temperature during the inspection was approximately 5°C under sunny to cloudy conditions. Some small patches of snow remained on the ground from a previous snowstorm and some light rain fell on the 9th. In the week preceding the inspection, approximately 23 mm of rain had fallen.

At the time of the inspection, tailings were being deposited into Cell 5. In addition, water from behind N-Dam was also being pumped back into Cell 5 and that water was being pumped into Pond 1. Neither of the sets of decant siphon pipes at J-dam (Pond 1 water into Pond 2) and Dam 1A (Pond 2 water discharge to the environment) were in use during the inspection. Reclamation activities were on-going in the TCA and a significant amount of the tailings in Cell 3 had been covered with sand and gravel.

Each of the embankments was inspected on foot. A camera and Dictaphone were used to record pertinent observations concerning both the physical conditions and seepage. In general, the crest and upstream slope of a given embankment were inspected first, followed by inspection of the downstream slope by walking along the toe of the slope. The transcribed Dictaphone notes and photographs constitute the field record (the Field Memo which remains in the office of BGC) and provides the basis for this formal report. Before leaving the site, a summary memo regarding tailings area maintenance items was prepared and reviewed with Mr. Mike Tansey from Lupin Mine; this memo is attached in Appendix 1.

4.2 Instrumentation

Seacor Environmental Engineering Inc. installed four thermistor strings in Dam #4 in October 1995, along with several other cables in the reclaimed tailings area. In addition, BGC (2000) outlines the installation details of an additional four thermistor cables in Dams 1A and 2. Some thermistors were installed in Dam 6 in May 2003 as reported in BGC (2003). Lupin Mine staff also installed some thermistors in Dams 1A and 2 in May 2003. Most of these recently installed thermistors were destroyed by a bear shortly after installation. Long term plots of the instrumentation data still being monitored by site staff are provided in Appendix 2. An interpretation of this data is provided on the individual dam sheets.

5. FINDINGS AND CONCLUSIONS

The inspection results for each of the structures are presented on the following pages in standardised format, complemented by a selection of site photographs. Refer to Figure 2 for the location of each structure. Specific maintenance requirements are documented on each of the individual sheets and again, in the summary memo provided in Appendix 1.

In general, the inspection confirms that the perimeter embankments are in good condition. Some erosional gullies resulted from the significant precipitation in August 2004 and these should be repaired. In addition, placement of the tailings cover layer in Cell 3 has changed the geometry of Dam 6 in terms of freeboard for retaining runoff from that area.

Clause D.6.f of the Water Licence notes that weekly inspections of tailings dams (and associated infrastructure) are to be undertaken by site staff and records kept on these inspections. As the water levels rise behind the various dams, inspections must be undertaken to assess potential seepage and dam performance.

Continued vigilance with regards to thermistor monitoring should be undertaken, especially when summer pond levels are high. Hence, all thermistors within tailings dams should be read according to the following frequency:

- November to April – monthly.
- May to June – weekly.
- July to October – bi-weekly.

The objective of collecting this data is to provide proactive assessment of potentially deteriorating performance of the dams. Instrumentation data from the various dams should be forwarded to BGC immediately after collection for review and interpretation.

In addition to thermistor readings, all pond levels should be recorded at least monthly and perhaps bi-weekly as water transfer events occur. Staff gauges or pore pressure transducers should be considered to record water levels.

DAM 1A

LOCATION:	West side of Pond 2.
FUNCTION:	Major perimeter closure for water retention; carries siphon pipes for water decant system.
LENGTH:	250 +/- m
MAX HEIGHT:	8 m +/- above d/s tundra.
AS-BUILT ELEVATION:	486.27 m
CREST WIDTH AND CONDITION:	7 to 8 m; surfaced with esker material, but not travelled because of the siphons. No significant cracking evident; condition is good.
RIPRAP:	Run of Mine rockfill; broadly graded; good condition. Minor disturbed area (due to construction traffic possibly) in rip rap at the crest edge.
BACKSLOPE:	Approx. 1.5H:1V; variably armoured with cobbles and boulders; no evidence of cracking.
TOE BERM:	Minor longitudinal cracking (noted previously) at oversteepened toe, adjacent to decant pipe valve stems. One small sinkhole located directly above central discharge pipe.
SEEPAGE:	No evidence of seepage.
INSTRUMENTATION:	<p>Thermistor D1A-00-1 is located in the crest, just south of the mid-point of the dam. All nodes below 5 m depth are subzero. Nodes below depth of 9 m (situated approximately below the embankment fill) are equal to or colder than -4°C with no signs of significant warming.</p> <p>Thermistor D1A-00-02 is located in the crest towards the north end of the dam. All nodes below 5 m depth are subzero with no indications of warming at depth. Nodes below a depth of 10.3 m appear to be colder than -3.8°C.</p>

DAM 1A CONTINUED

MAINTENANCE

RECOMMENDATIONS:

Backfill small sinkhole in the toe berm fill adjacent to the center discharge pipe. Monitor minor cracking at toe of downstream berm and repair as required.

CONCLUSIONS:

The dam is in good condition with no evidence of seepage passing through or beneath the dam. Monitor instrumentation regularly and visually inspect downstream toe as Pond 2 level increases.

DAM 1B

LOCATION:	West side of Pond 2.
FUNCTION:	Minor perimeter closure for water retention; pond level is below dam base elevation thus currently functioning only as a road embankment.
LENGTH:	200 +/- m
MAX HEIGHT:	2.5 +/- m above d/s tundra.
AS-BUILT ELEVATION:	485.83 m
CREST WIDTH AND CONDITION:	5 to 6 m wide; surfaced with esker material so that this dam may also function as a roadway for access around the perimeter of the area. Crest condition is good.
RIPRAP:	Run of Mine rockfill; variable sizes; undulating; disturbed in areas but in good condition overall.
BACKSLOPE:	Approx. 1.5H:1V with minor runoff erosion rills and a toe-of-slope roadway berm. No cracking observed.
SEEPAGE:	No seepage observed. No water head being retained by the structure.
MAINTENANCE RECOMMENDATIONS:	None currently required.
CONCLUSIONS:	The structure is in good condition; it should be monitored for seepage if Pond 2 rises sufficiently to place a water head against the dam.

DAM 1C

LOCATION:	West side of Pond 2.
FUNCTION:	Minor perimeter closure for water retention: currently retaining no water other than small puddles. Currently functioning only as a road embankment.
LENGTH:	230 +/- m
MAX HEIGHT:	2.0 +/- m above d/s tundra.
AS-BUILT ELEVATION:	485.88 m
CREST WIDTH AND CONDITION:	9 +/- m wide; surfaced with esker material, so that this dam may also function as a roadway, although the downstream toe roadway appears more commonly used. Crest condition is good.
RIPRAP:	Run of Mine rockfill; some minor disturbances noted; overall condition satisfactory.
BACKSLOPE:	Approx. 3H:1V, smooth slope. One small sinkhole noted approximately 15 m south of the north abutment. Access road berm appears in good condition.
SEEPAGE:	No seepage observed. No water currently being retained by the structure.
MAINTENANCE RECOMMENDATIONS:	Backfill small sinkhole located on the downstream face.
CONCLUSIONS:	The structure is in good condition; it should be monitored for seepage if Pond 2 rises sufficiently to place a water head against the dam.

DAM 2

LOCATION:	North end of Pond 2.
FUNCTION:	Major perimeter closure for water retention; natural pond downstream of the dam.
LENGTH:	350 +/- m
MAX HEIGHT:	5.5 +/- m above d/s tundra.
AS-BUILT ELEVATION:	486.30 m
CREST WIDTH AND CONDITION:	Approx. 6 m; surfaced with esker material and used as the primary traffic route. Crest condition is good; no cracking is evident.
RIPRAP:	Run of Mine rock forms convex-upward, gently sloped upstream face; erosional scarp formed at higher water level about 2.5 m below the crest; good condition.
BACKSLOPE:	Approx. 1.5H:1V with one significant erosion gully near the north abutment.
SEEPAGE:	Seepage (likely resulting from active layer drainage rather than seepage through the dam) observed discharging at the toe of the northeast abutment where it is typically observed.
INSTRUMENTATION:	<p>Thermistor D2-00-02 is located at the north end of the crest. Temperatures at depth are subzero. Below 5 m depth (approximate bottom of embankment fill), temperatures are colder than -2°C.</p> <p>Thermistor D2-00-03 is situated near the mid-point of the dam. Temperatures below 5 m depth are all subzero. Temperatures below 15 m depth are colder than -3.5°C.</p>
MAINTENANCE RECOMMENDATIONS:	None required.
CONCLUSIONS:	The dam is in satisfactory condition. Continue with vigilant monitoring of instrumentation and visual condition assessment.

DAM 3

LOCATION:	East end of now-covered tailings storage area, east of Cells 1 and 2.
FUNCTION:	Minor perimeter closure for tailings retention; Boomerang Lake downstream of the dam. The dam retains tailings covered with an esker material cap, thickened in 1995 by one metre using esker material.
LENGTH:	600 +/- m
MAX HEIGHT:	2.5 +/- m above d/s tundra.
AS-BUILT ELEVATION:	488.4 m
CREST WIDTH AND CONDITION:	Approx. 8 m; surfaced with esker material. Crest condition is good and no cracking is evident. Discharge swale on the east arm appears in satisfactory condition. Portions of remnant gullies are located on the east arm of the dam.
RIPRAP:	Inside slope buried with tailings cover sand and gravel.
BACKSLOPE:	Variable in inclination; locally meets the shoreline of Boomerang Lake. No new cracking noted along the northwest arm.
SEEPAGE:	None observed near the toe of the east arm of the dam.
MAINTENANCE RECOMMENDATIONS:	None required.
CONCLUSIONS:	The dam is in satisfactory condition.

DAM 4

LOCATION:	South end of Cell 4 for K Dam sub-pond.
FUNCTION:	Perimeter closure for water retention at present; natural pond downstream of the dam at its west end.
LENGTH:	900 +/- m
MAX HEIGHT:	6 +/- m above u/s native ground elevation.
AS-BUILT ELEVATION:	489.59 m
CREST WIDTH AND CONDITION:	Approximately 12 m wide crest width in generally good condition. Recent truck access and crest grading have created windrows along road edges which interrupt surface drainage.
RIPRAP:	Run of Mine rockfill in generally good condition on upstream slope. Some construction machinery/dozer activity on the upstream side has disturbed the overall slope of the riprap.
BACKSLOPE:	Esker sand; slope steeper in upper portion and flattens in the lower portion, approximately 2H:1V. Several erosional gullies noted on the crest edges. Geogrid exposed in places. Some minor cracks parallel the contours in the lower portion of the slope (seen previously and not of concern), adjacent to the steep toe.
SEEPAGE:	No apparent seepage but the head of water across the dam is relatively low. Temporary cofferdams, which were on the downstream side of dam, have been graded along the toe; the west end cofferdam remains. After pumping of the toe berm pond was undertaken, seepage into pond was coming from downstream lake side, not from the upstream side of the dam. This circumstance has been previously observed.
INSTRUMENTATION:	<p>Four thermistors are currently monitored in Dam 4. From east to west across the crest, the four cables are numbered TD4-1 to -4.</p> <p>Thermistor TD4-1 has only subzero temperatures below 4 m depth. Below a depth of 6 m (approximately embankment fill thickness), the subsurface temperatures have all been colder than -2.5°C with no signs of significant warming.</p>

DAM 4 CONTINUED

INSTRUMENTATION:

Thermistor TD4-2 was destroyed in summer 2003.

Thermistor TD4-3 displayed only subzero temperatures below 4 m depth. Below a depth of 6 m (approximately embankment fill thickness), the temperatures have all been colder than -2.0°C with no signs of significant warming.

Thermistor TD4-4 displayed only subzero temperatures below 4 m depth. Below a depth of 6 m (approximately embankment fill thickness), the subsurface temperatures have all been colder than -2.7°C with no signs of significant warming.

MAINTENANCE

RECOMMENDATIONS:

Grade windrows on the crest to allow for proper crest drainage. Backfill new erosional gullies at the west and east ends of the dam backslope.

CONCLUSIONS:

The dam is in good condition and is functioning without apparent seepage.

DAM 5

LOCATION:	Southeast corner of Cell 3, just northwest of Dam 4.
FUNCTION:	Minor perimeter closure intended for future tails and water retention; currently functioning as a road embankment.
LENGTH:	250 +/- m
MAX HEIGHT:	1.5 +/- m above d/s tundra.
AS-BUILT ELEVATION:	491.54 m
CREST WIDTH AND CONDITION:	Approximately 8 m wide and esker surfaced so that the dam may also function as roadway. Crest is in generally good condition but windrows have been formed at road edges due to grading.
RIPRAP:	Angular rockfill, maximum particle size from 20 to 30 cm, has been placed on the upstream face. Approximate slope of 3H:1V and in good condition.
BACKSLOPE:	About 1.5 to 2H:1V with till and esker sand. Occasional minor erosional gullies have formed.
SEEPAGE:	No seepage observed. No water head being retained by the structure.
MAINTENANCE RECOMMENDATIONS:	Grade crest windrows to allow good surface drainage and backfill minor gullies on the backslope.
CONCLUSIONS:	The dam is in good condition and should be inspected for seepage when pond levels place a water head against it.

DAM 6

LOCATION:	West side of Cell 3 retaining tailings placed behind K-dam.
FUNCTION:	Minor perimeter closure. Retaining some tailings beach and ponded water on the northern portion of the dam.
LENGTH:	300 +/- m
MAX HEIGHT:	2.5 +/- m above d/s tundra.
AS-BUILT ELEVATION:	490.25 m previously but some minor fill placement may have occurred.
CREST WIDTH AND CONDITION:	Approximately 10 m wide and esker surfaced so that dam also function as a roadway (occasional tire rut near the downstream toe). Crest in good condition; appears that some new fill has been placed on the crest as an extension of the tailings covering program in Cell 3.
RIPRAP:	Upstream side has been covered now that tailings cover layer of sand has been placed.
BACKSLOPE:	About 2H:1V with till and esker sand; minor cracking observed. Numerous erosional gullies observed.
SEEPAGE:	No seepage observed.
INSTRUMENTATION:	Three thermistors, BGC03-01, -02 and 03 were installed in May 2003 as part of the site investigation program. The first two thermistors on crest were destroyed in June 2003. Thermistor BGC03-03 is located on the upstream side of the dam, within the tailings, approximately 225 m south of the north abutment. The data shows frozen conditions (-2.7° to -4.6°C) below 7 m depth.
MAINTENANCE RECOMMENDATIONS:	Cover placement on the upstream side has reduced the freeboard amount on the reclaimed dam. Important to ensure that surface runoff in the spring does not overtop the dam and lead to erosion of the dam.
CONCLUSIONS:	The dam is in good condition but its performance should be monitored during spring freshet and significant rainfall events.

6. CLOSURE

We trust the enclosed meets your present requirements and we thank Kinross Gold Corporation, Echo Bay Division, for the opportunity to be of service at Lupin Mine. If you have any questions or require additional information, please contact the undersigned.


Respectfully submitted,
BGC ENGINEERING INC.

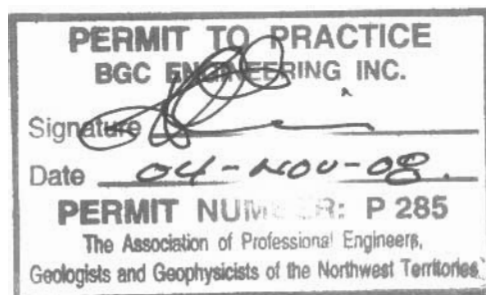
per:



James W. Cassie, M.Sc., P.Eng.
Specialist Geotechnical Engineer

Reviewed by:

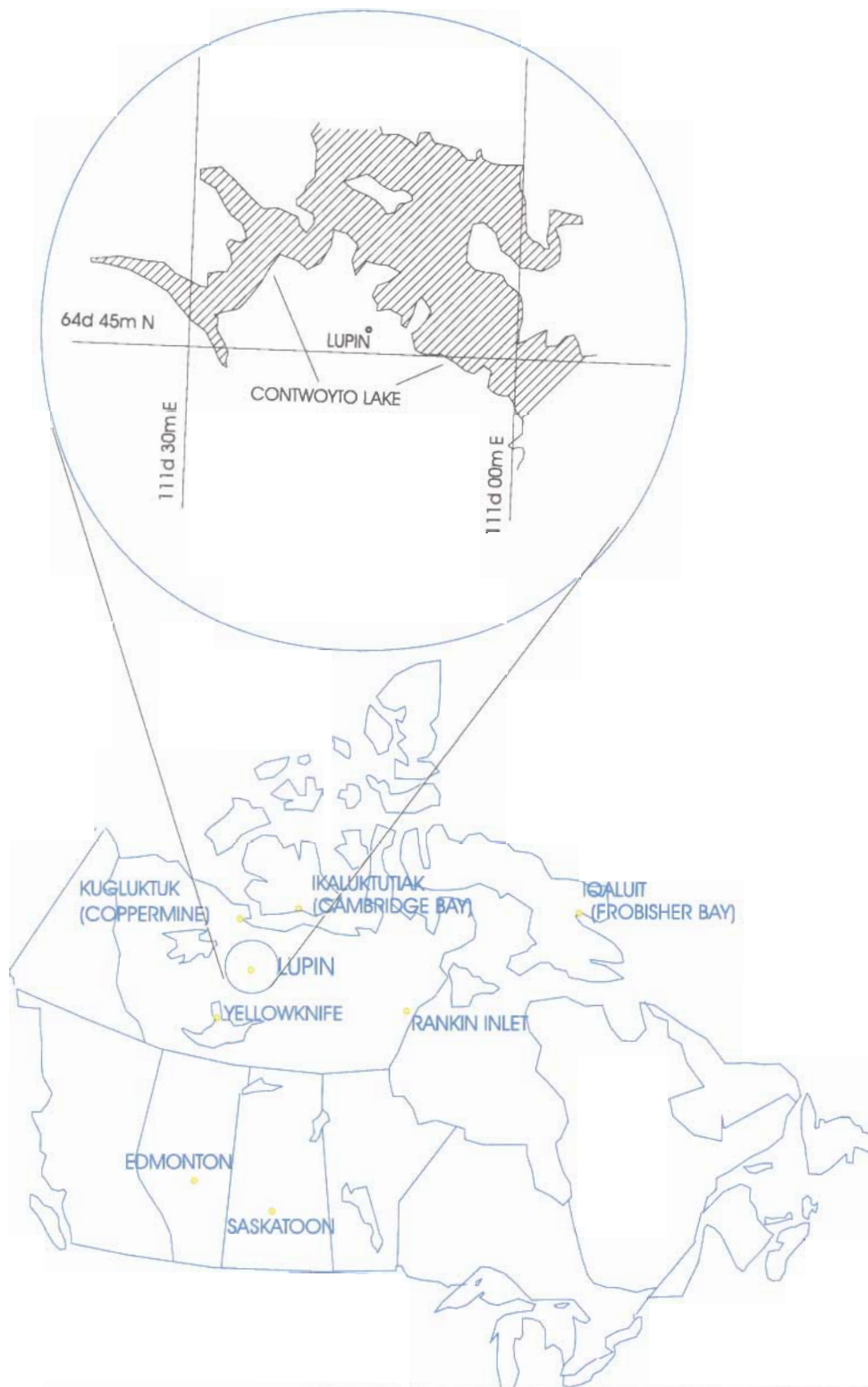
per 
Gerry Ferris, M.Sc., P.Eng.
Geotechnical Engineer



REFERENCES

- BGC Engineering Inc. 2000. Thermistor Installation Program, Dam 1A, Dam 2, M Dam, Cell 1 and Esker, Lupin Mine, Nunavut. Report submitted to Echo Bay Mines Ltd., Project No. 0256-002-01, December 11, 2000, 7 pages plus figures and appendices.
- BGC Engineering Inc. 2003. Dam 6 Site Investigation and Raise Design, Lupin Mine, Nunavut. Report submitted to Kinross Gold Corporation, Project No. 0256-006, July 25, 2003, 31 pages plus figures and appendices.
- Geocon Inc. 1982. As-Built Tailings Containment Area, Lupin Project. Report submitted to Echo Bay Mines Ltd., Project No. A1207 / 01186-3, December 15, 1982, 26 pages plus figures and appendices.
- Golder Associates Ltd. 1992. 1992 Perimeter Dam Construction Drawings. Issued for tender to Echo Bay Mines Ltd., February 1992, 4 sheets.

FIGURES



AS A MUTUAL PROTECTION TO OUR CLIENT, THE PUBLIC AND OURSELVES, ALL REPORTS AND DRAWINGS ARE SUBMITTED FOR THE CONFIDENTIAL INFORMATION OF OUR CLIENT FOR A SPECIFIC PROJECT AND AUTHORIZATION FOR USE AND/OR PUBLICATION OF DATA STATEMENTS CONCLUSIONS OR ABSTRACTS FROM OR REGARDING OUR REPORTS AND DRAWINGS IS RESERVED PENDING OUR WRITTEN APPROVAL.

SCALE:	As shown	DESIGNED:	JWC
DATE:	OCT 2004	CHECKED:	JWC
DRAWN:	SLF	APPROVED:	JWC

CLIENT:

KINROSS
Gold Corporation

BGC

BGC Engineering Inc.
AN APPLIED EARTH SCIENCES COMPANY

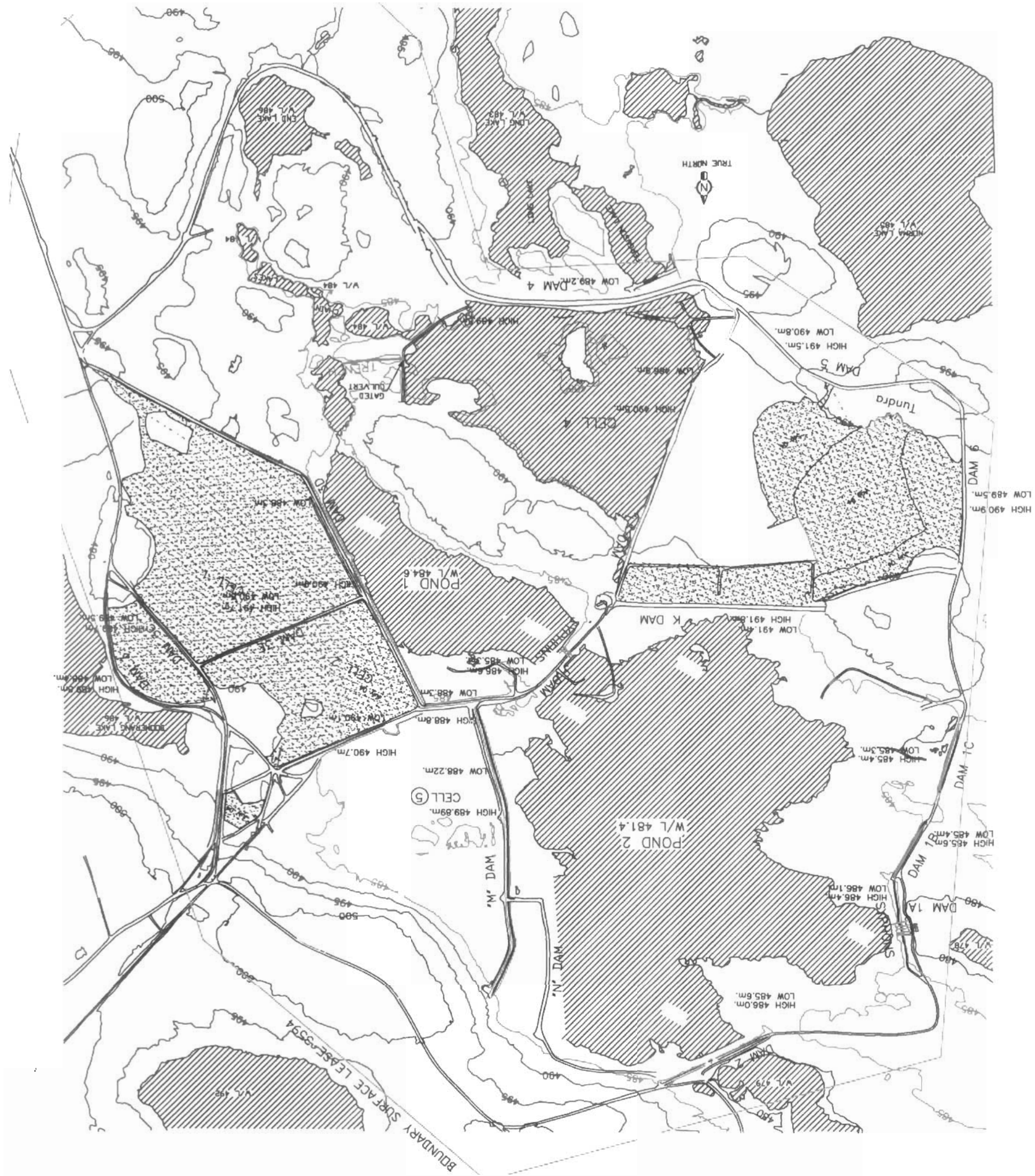
Calgary, Alberta.

Phone: (403) 250-5185

PROJECT **ANNUAL INSPECTION OF PERIMETER
TAILINGS DAMS**

TITLE **LUPIN MINE LOCATION MAP**

PROJECT No.	DWG. No.	REV.
0256-009-02	1	0

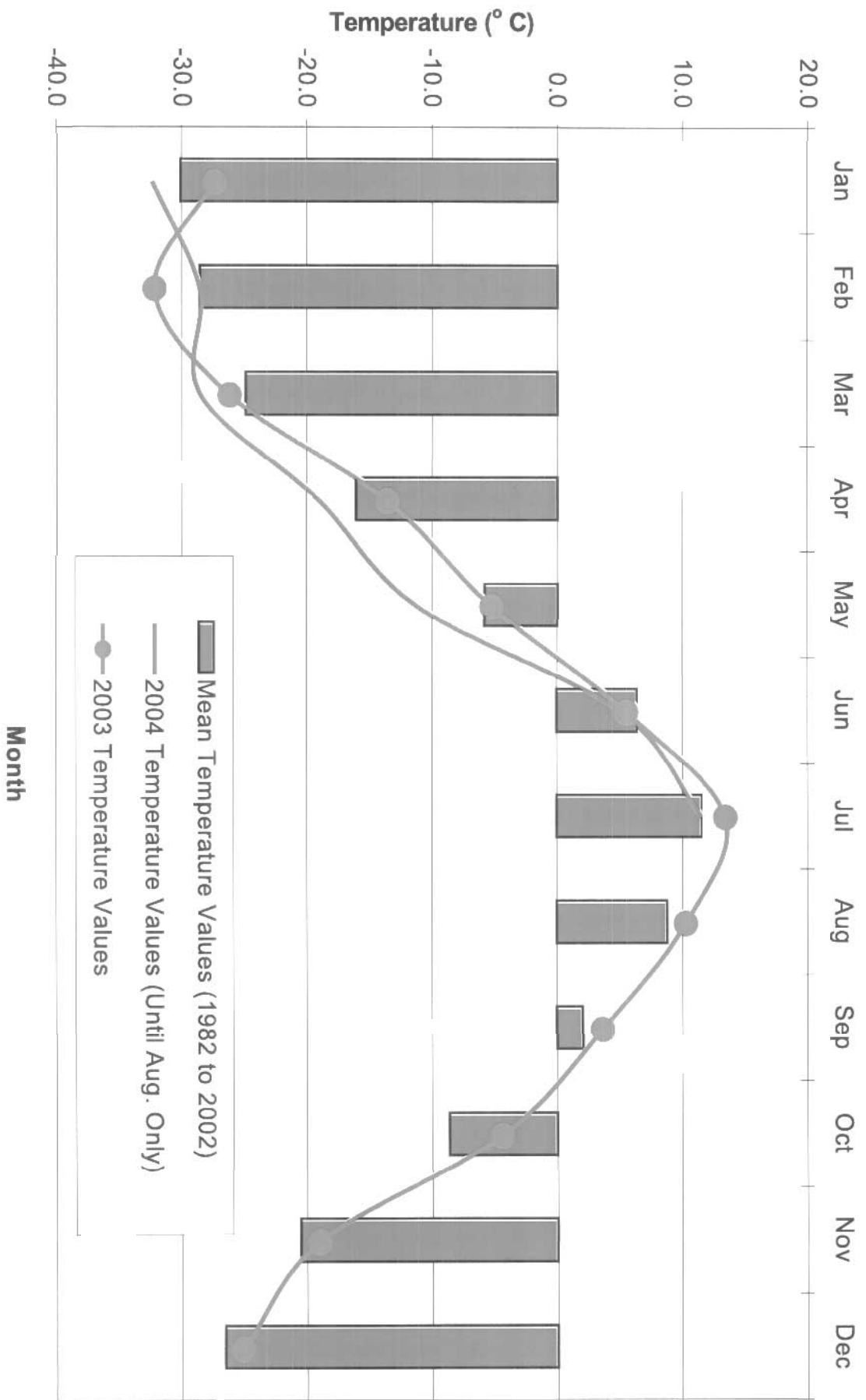


REV.	DATE	REVISION	DRAWN	CHECKED	APPROVED	APPROVED: JWC
						CHECKED: JWC
						DESIGNED: JWC
						DRAWN: SLF
						DATE: OCT 2004
						SCALE: As Shown

AS A MUTUAL PROTECTION TO OUR CLIENT, THE PUBLIC AND OURSELVES, ALL REPORTS AND DRAWINGS ARE SUBMITTED FOR THE CONFIDENTIAL INFORMATION OF OUR CLIENT FOR A SPECIFIC PROJECT AND CONCLUSIONS OR ABSTRACTS FROM OR REGARDING OUR REPORTS AND DRAWINGS IS RESERVED PENDING OUR WRITTEN APPROVAL.

CLIENT: KINROSS
BGC
AN APPLIED EARTH SCIENCES COMPANY
Calgary, Alberta Phone: (403) 250-5185

PROJECT: ANNUAL INSPECTION OF PERIMETER TAILINGS DAMS
TITLE: TAILINGS CONTAINMENT AREA
PROJECT NO.: 0256-009-02
FIGURE NO.: 2
REV: 0



DATE:
OCT 2004

DRAWN

SLF

REFERENCED DRAWING DESCRIPTION

AS A MUTUAL PROTECTION TO OUR CLIENT, THE PUBLIC AND OURSELVES, ALL REPORTS AND DRAWINGS ARE SUBMITTED FOR THE CONFIDENTIAL INFORMATION OF OUR CLIENT FOR A SPECIFIC PROJECT AND AUTHORIZATION FOR USE AND/OR PUBLICATION OF DATA, STATEMENTS, CONCLUSIONS OR ABSTRACTS FROM OR REGARDING OUR REPORTS AND DRAWINGS IS RESERVED PENDING OUR WRITTEN APPROVAL.



BGC ENGINEERING INC.
AN APPLIED EARTH SCIENCES COMPANY
Calgary, Alberta
Phone: (403) 250-5185

CLIENT

KINROSS

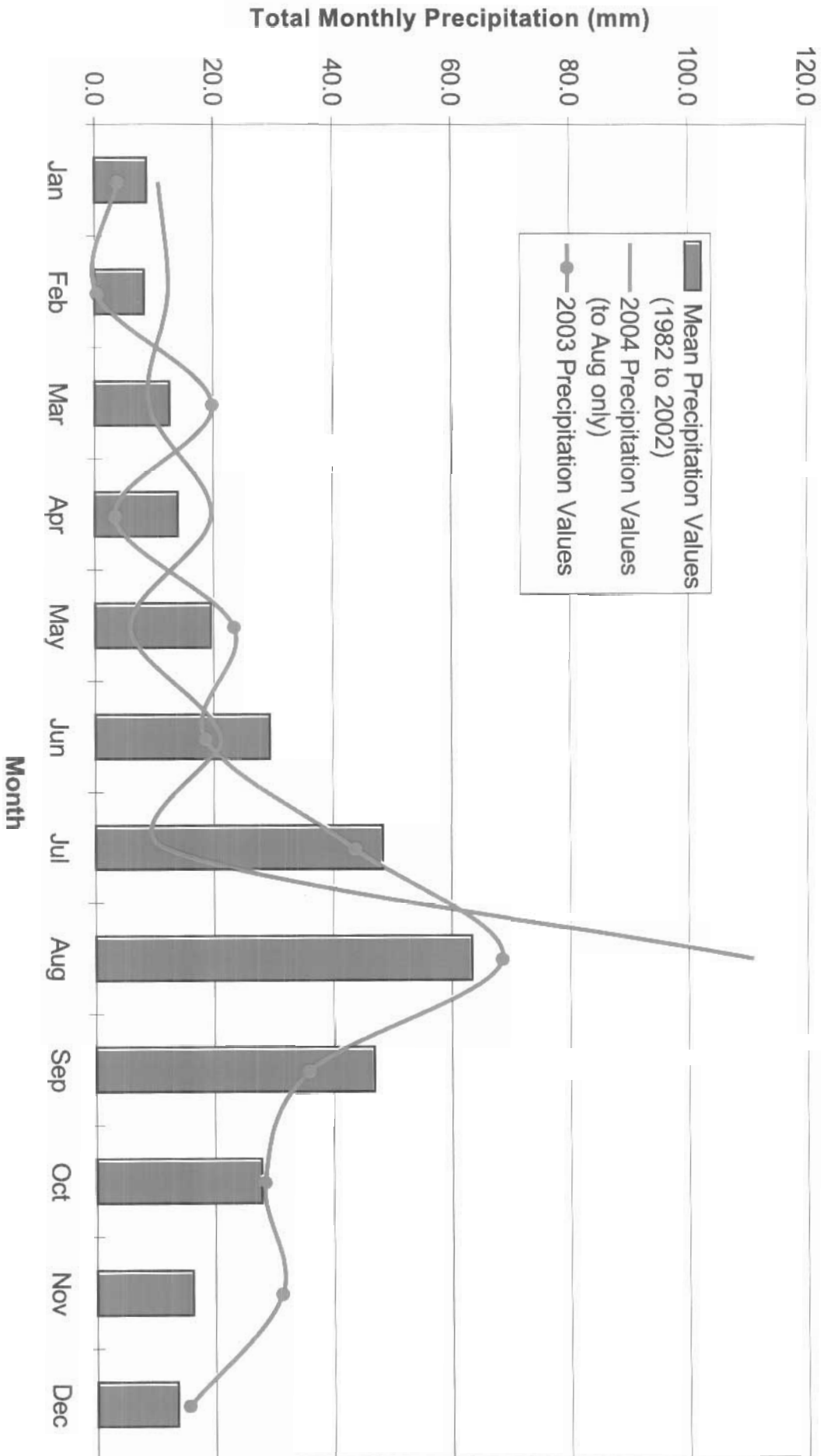
PROJECT ANNUAL INSPECTION OF PERIMETER TAILINGS DAMS

TITLE COMPARISON OF MONTHLY TEMPERATURE MEANS TO 2003 & 2004

PROJECT No. 0256-009-02

DWG. No. 3

REV. 0



DATE:
OCT 2004

DRAWN

SLF

REFERENCED DRAWING DESCRIPTION

AS A MUTUAL PROTECTION TO OUR CLIENT, THE PUBLIC AND OURSELVES, ALL REPORTS AND DRAWINGS ARE SUBMITTED FOR THE CONFIDENTIAL INFORMATION OF OUR CLIENT FOR A SPECIFIC PROJECT AND AUTHORIZATION FOR USE AND/OR PUBLICATION OF DATA, STATEMENTS, CONCLUSIONS OR ABSTRACTS FROM OR REGARDING OUR REPORTS AND DRAWINGS IS RESERVED PENDING OUR WRITTEN APPROVAL.

BGC

AN APPLIED EARTH SCIENCES COMPANY
Calgary, Alberta

BGC ENGINEERING INC.

Phone: (403) 250-5185

CLIENT

KINROSS
Copper Development Corp.

PROJECT ANNUAL INSPECTION OF PERIMETER TAILINGS DAMS

TITLE

COMPARISON OF MONTHLY PRECIPITATION MEANS TO 2003 & 2004

PROJECT No.

0256-009-02

DWG. No.

4

REV.

0

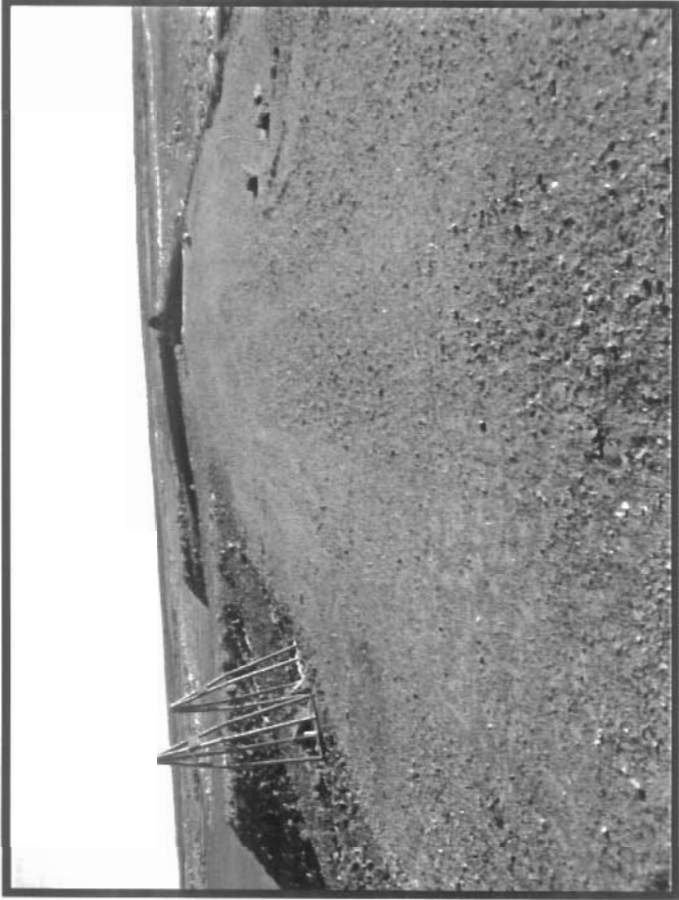


Photo 17 shows a view of the crest looking towards the south abutment.

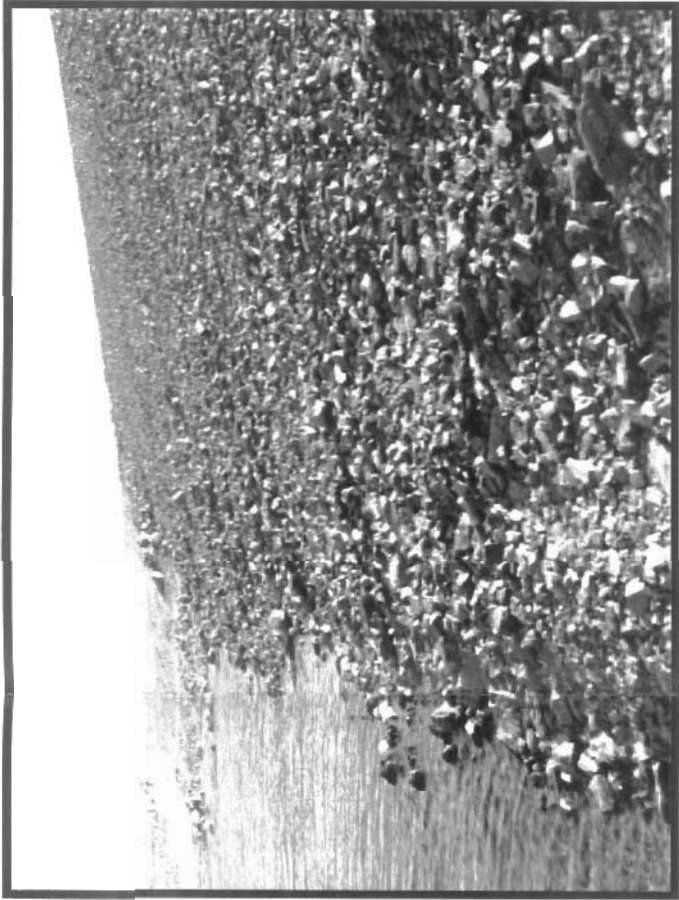


Photo 19 shows a view of the riprap on the upstream side. The distance from the water level to the crest of this dam is approximately 3.5 metres.

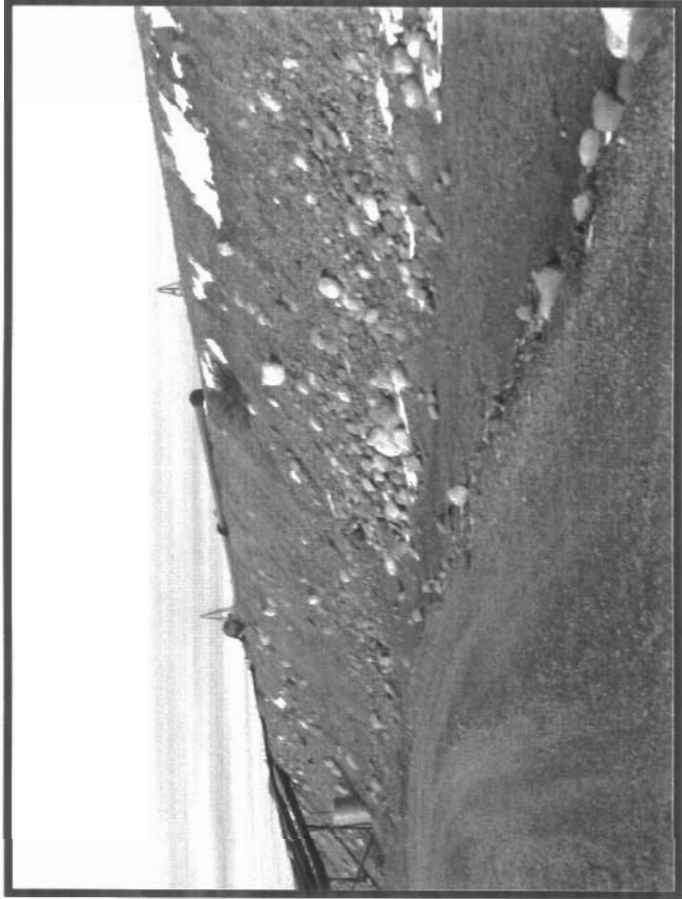


Photo 23 shows the alternating colour pattern of the dark grey angular rock over top of the light brown esker sand and gravel on the downstream slope.



Photo 27 shows some longitudinal cracks formed in the angular rock fill. These cracks were previously noted proximal to the valve locations.

CLIENT:

KINROSS

AS A MUTUAL PROTECTION TO OUR CLIENT, THE PUBLIC AND OURSELVES, ALL REPORTS AND DRAWINGS ARE SUBMITTED FOR THE CONFIDENTIAL INFORMATION OF OUR CLIENT FOR A SPECIFIC PROJECT AND AUTHORIZATION FOR USE AND/OR PUBLICATION OF DATA STATEMENTS CONCLUSIONS OR ABSTRACTS FROM OR REGARDING OUR REPORTS AND DRAWINGS IS RESERVED PENDING OUR WRITTEN APPROVAL.

	-	-	-	-	-	-
-	-	-	-	-	-	-
-	-	-	-	-	-	-
REV.	DATE	REVISION NOTES	DRAWN	CHECKED	APPROVED	

SCALE:	N/A
DATE:	September 2003
DRAWN:	SLF
DESIGNED:	JWC
CHECKED:	JWC
APPROVED:	JWC

PROJECT	ANNUAL INSPECTION OF PERIMETER TAILINGS DAMS				
TITLE	DAM 1A INSPECTION PHOTOS				
PROJECT No.	0256-009-02	DWG. No.	5	REV.	0

BGC

BGC Engineering Inc.

AN APPLIED EARTH SCIENCES COMPANY

Calgary Alberta Phone: (403) 250-5185



Photo 29 is a view of the crest on the upstream side. As previously noted, the riprap on the upstream side is relatively undulating. This dam does not currently retain any water.



Photo 31 is a view of the crest on the upstream side again looking towards the north.

AS A MUTUAL PROTECTION TO OUR CLIENT, THE PUBLIC AND OURSELVES, ALL REPORTS AND DRAWINGS ARE SUBMITTED FOR THE CONFIDENTIAL INFORMATION OF OUR CLIENT FOR A SPECIFIC PROJECT AND AUTHORIZATION FOR USE AND/OR PUBLICATION OF DATA STATEMENTS CONCLUSIONS OR ABSTRACTS FROM OR REGARDING OUR REPORTS AND DRAWINGS IS RESERVED PENDING OUR WRITTEN APPROVAL.

SCALE:	N/A	DESIGNED:	JWC
DATE:	Oct 2004	CHECKED:	JWC
DRAWN:	SLF	APPROVED:	JWC

CLIENT: **KINROSS**
minerals corporation



BGC Engineering Inc.
AN APPLIED EARTH SCIENCES COMPANY

Calgary, Alberta.

Phone: (403) 250-5185

PROJECT:	ANNUAL INSPECTION OF PERIMETER TAILINGS DAMS		
TITLE:	DAM 1B INSPECTION PHOTOS		
PROJECT No.	DWG. No.	REV.	
0256-009-02	6	0	

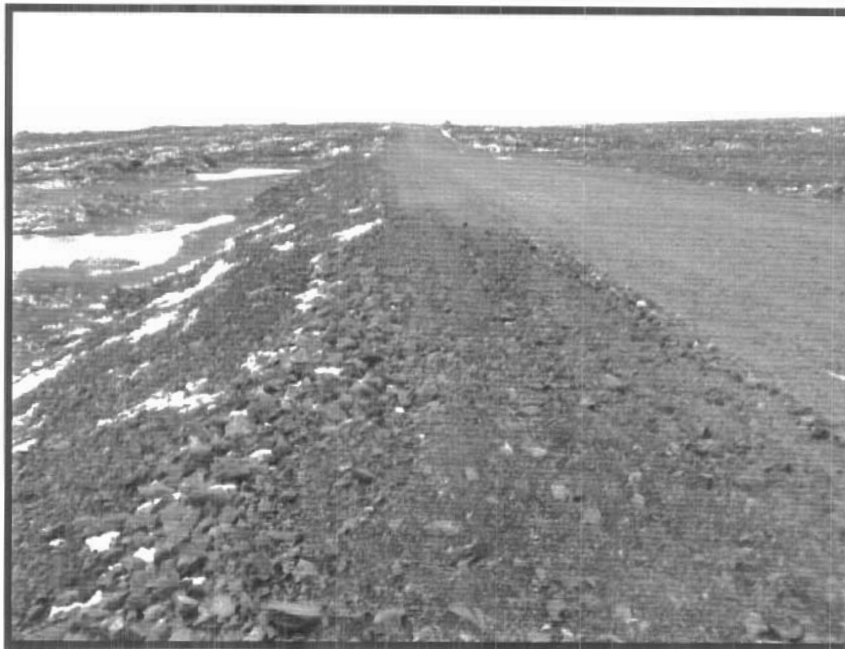


Photo 35 shows the upstream side and the crest. We do have a slight undulating nature to the riprap, likely a result of construction traffic activity.



Photo 38 is a view along the access road toe berm. The downstream side has no signs of deformation or cracking from this perspective.

AS A MUTUAL PROTECTION TO OUR CLIENT, THE PUBLIC AND OURSELVES, ALL REPORTS AND DRAWINGS ARE SUBMITTED FOR THE CONFIDENTIAL INFORMATION OF OUR CLIENT FOR A SPECIFIC PROJECT AND AUTHORIZATION FOR USE AND/OR PUBLICATION OF DATA STATEMENTS CONCLUSIONS OR ABSTRACTS FROM OR REGARDING OUR REPORTS AND DRAWINGS IS RESERVED PENDING OUR WRITTEN APPROVAL.

SCALE:	N/A	DESIGNED:	JWC
DATE:	Oct 2004	CHECKED:	JWC
DRAWN:	SLF	APPROVED:	JWC

CLIENT: **KINROSS**
A world of opportunities



BGC Engineering Inc.
AN APPLIED EARTH SCIENCES COMPANY

Calgary, Alberta.

Phone: (403) 250-5185

PROJECT	ANNUAL INSPECTION OF PERIMETER TAILINGS DAMS		
TITLE	DAM 1C INSPECTION PHOTOS		
PROJECT No.	DWG. No.	REV.	
0256-009-02	7	0	

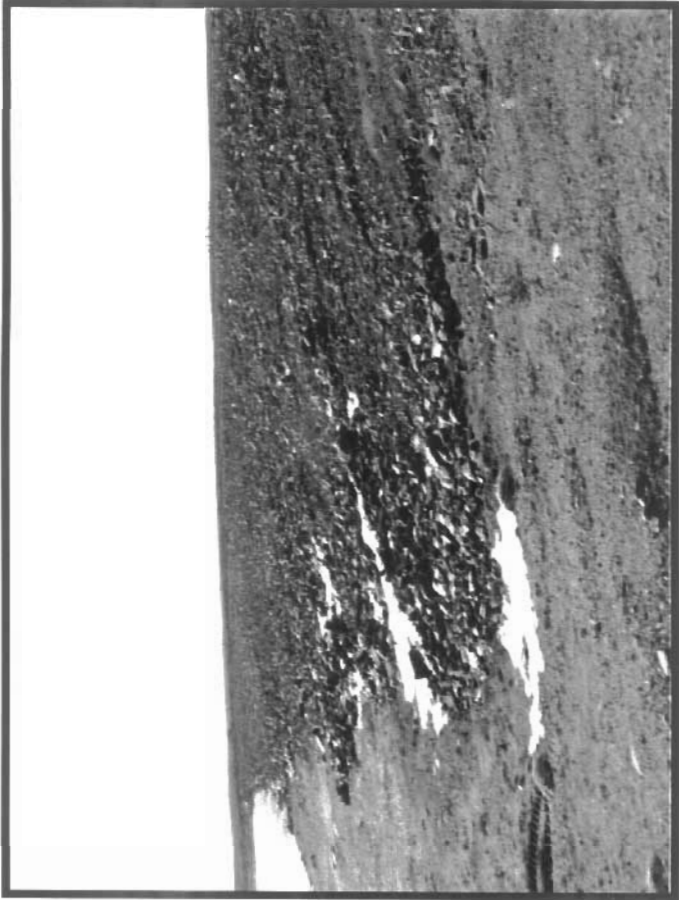


Photo 2 shows a view of the upstream side. The condition of the riprap appears to be satisfactory.

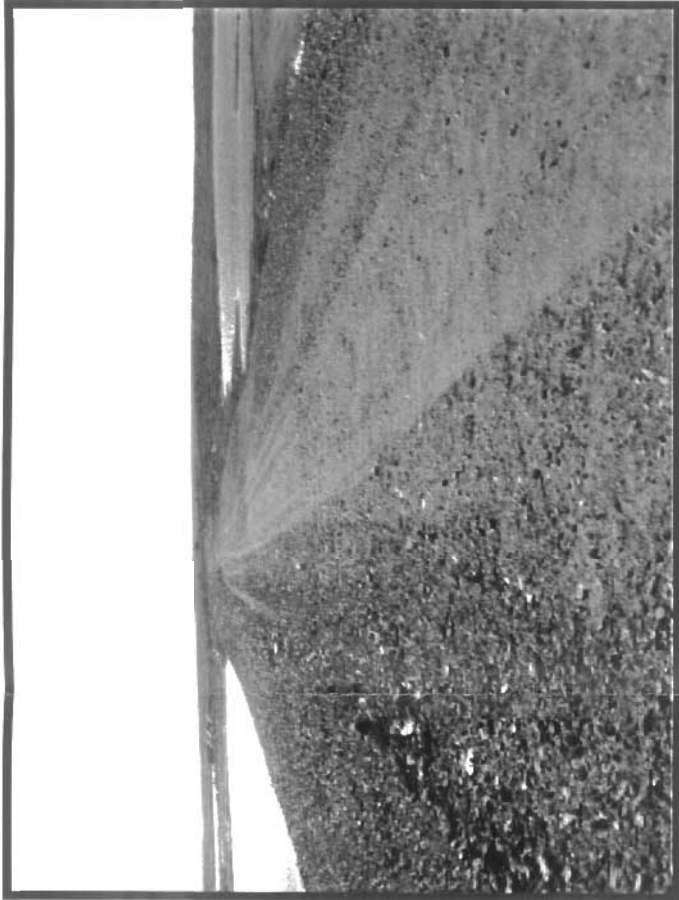


Photo 3 shows the condition of the crest looking towards the south. From this perspective, there are no signs of settlement or cracking.



Photo 4 is a view of the upstream side. The distance from the current pond level to the crest is approximately 3.5 metres. Occasional small scarp form at the water level.

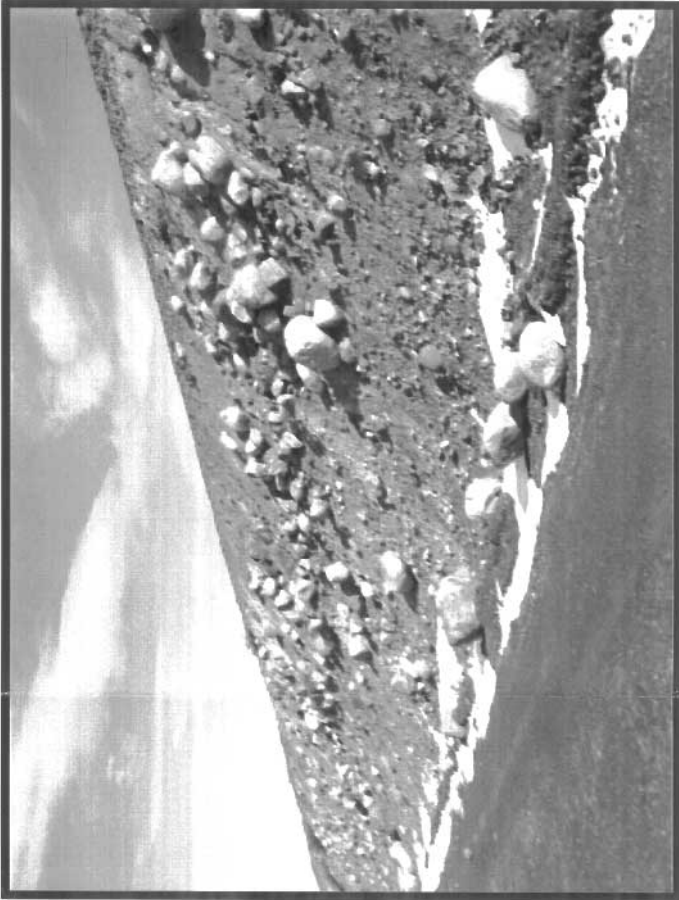


Photo 8 is just another view of the downstream face.

CLIENT:

KINROSS

AS A MUTUAL PROTECTION TO OUR CLIENT, THE PUBLIC AND OURSELVES, ALL REPORTS AND DRAWINGS ARE SUBMITTED FOR THE CONFIDENTIAL INFORMATION OF OUR CLIENT FOR A SPECIFIC PROJECT AND AUTHORIZATION FOR USE AND/OR PUBLICATION OF DATA STATEMENTS CONCLUSIONS OR ABSTRACTS FROM OR REGARDING OUR REPORTS AND DRAWINGS IS RESERVED PENDING OUR WRITTEN APPROVAL.

REV.	DATE	REVISION NOTES	DRAWN	CHECKED	APPROVED				

SCALE: N/A

DATE: October 2004

DRAWN: SLF

DESIGNED: JWC

CHECKED: JWC

APPROVED: JWC

PROJECTANNUAL INSPECTION OF PERIMETER TAILINGS DAMS

TITLEDAM 2 INSPECTION PHOTOS

PROJECT No.0256-009-02

DWG No.8

REV.0

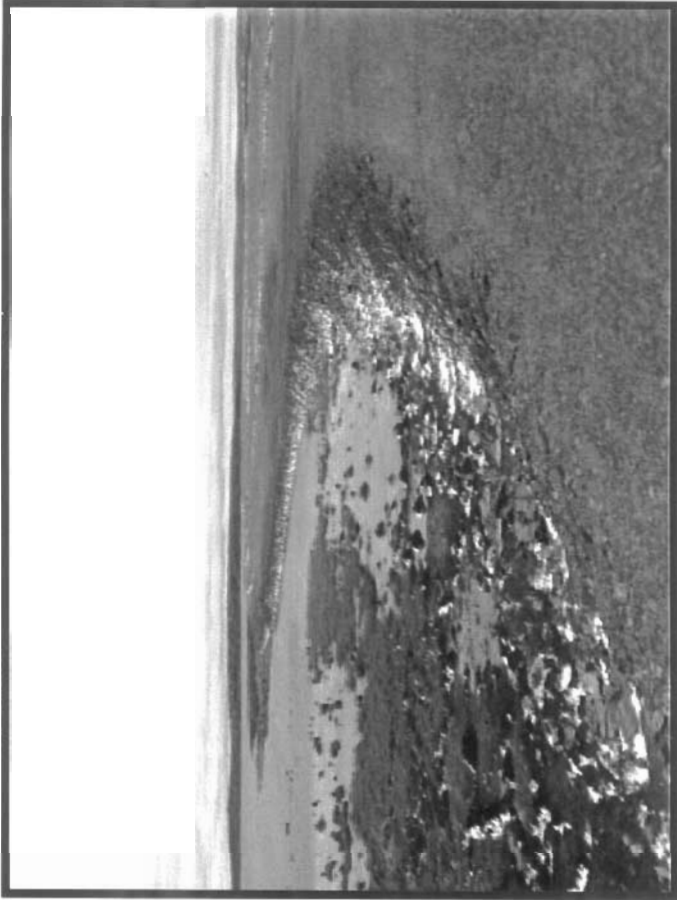


Photo 72 shows a view of Dam 3 with Boomerang Lake on the left.

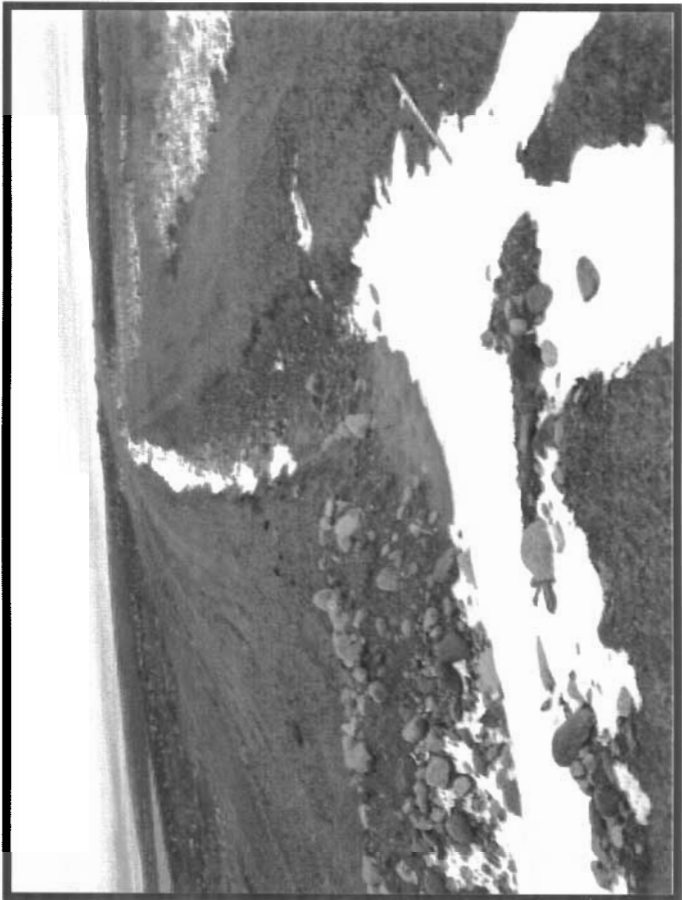


Photo 79 shows a small ditch which runs from the south end towards the north and then bends 90 degrees to the east across the crest of this dam. It is used to direct some of the surficial drainage and from this perspective, looks in satisfactory condition.

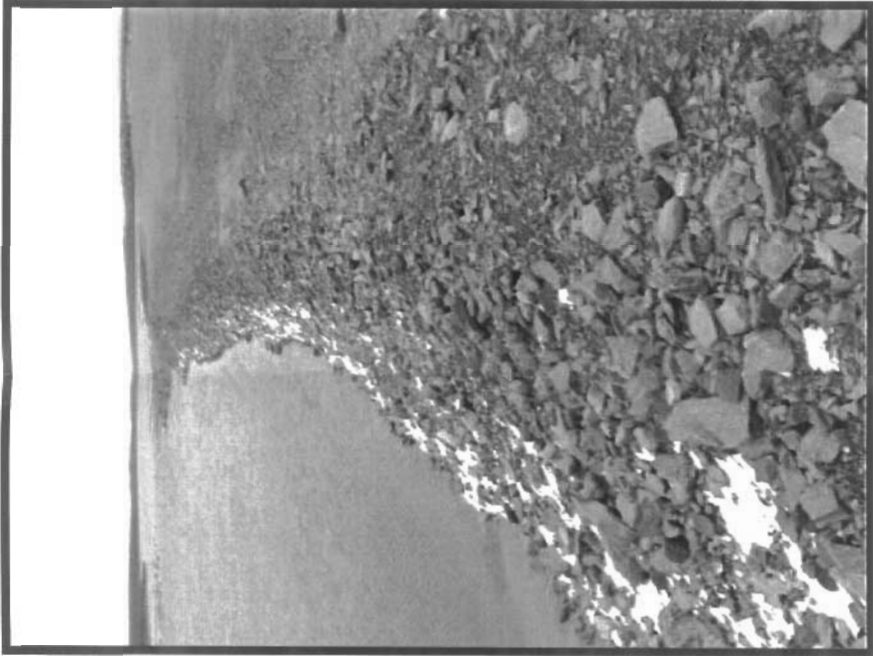


Photo 73 shows the toe edge where it meets Boomerang Lake. This is the area where historically cracking has been seen, No significant sloughs are noted right now.

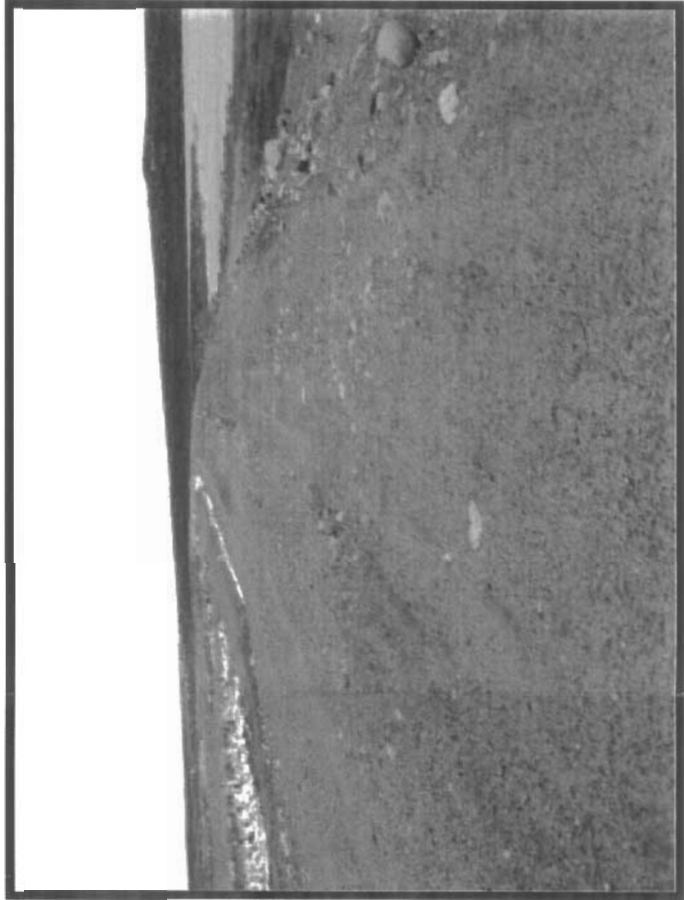


Photo 80 shows the condition of Dam 3 looking towards the north along the toe of this dam. There are no signs of significant erosion or any seepage discharging from this reclaimed dam

CLIENT:

KINROSS
CORPORATION

AS A MUTUAL PROTECTION TO OUR CLIENT, THE PUBLIC AND OURSELVES, ALL REPORTS AND DRAWINGS ARE SUBMITTED FOR THE CONFIDENTIAL INFORMATION OF OUR CLIENT FOR A SPECIFIC PROJECT AND AUTHORIZATION FOR USE AND/OR PUBLICATION OF DATA, STATEMENTS, CONCLUSIONS OR ABSTRACTS FROM OR REGARDING OUR REPORTS AND DRAWINGS IS RESERVED PENDING OUR WRITTEN APPROVAL.

	-	-	-	-	-
	-	-	-	-	-
	-	-	-	-	-
	-	-	-	-	-
REV	DATE	REVISION NOTES	DRAWN	CHECKED	APPROVED

SCALE:	N/A
DATE:	October 2004
DRAWN:	SLF
DESIGNED:	JWC
CHECKED:	JWC
APPROVED:	JWC

PROJECT	ANNUAL INSPECTION OF PERIMETER TAILINGS DAMS				
TITLE	DAM 3 INSPECTION PHOTOS				
PROJECT No.	0256-009-02	DWG No.	9	REV.	0

BGC

BGC Engineering Inc.
AN APPLIED EARTH SCIENCES COMPANY

Calgary Alberta Phone: (403) 250-5185

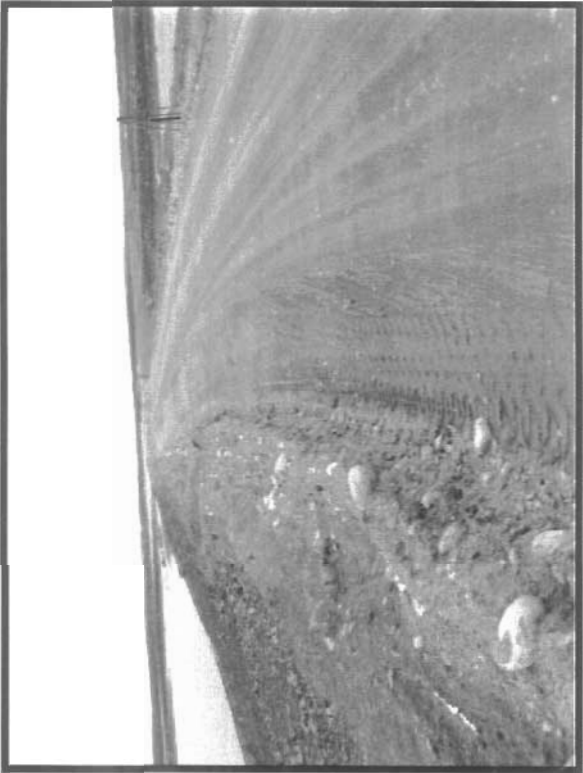


Photo 60 shows a significant windrow which has been formed on the crest of Dam 4 at its west abutment. This crest will have to be regraded to a proper grade to prevent future erosion.

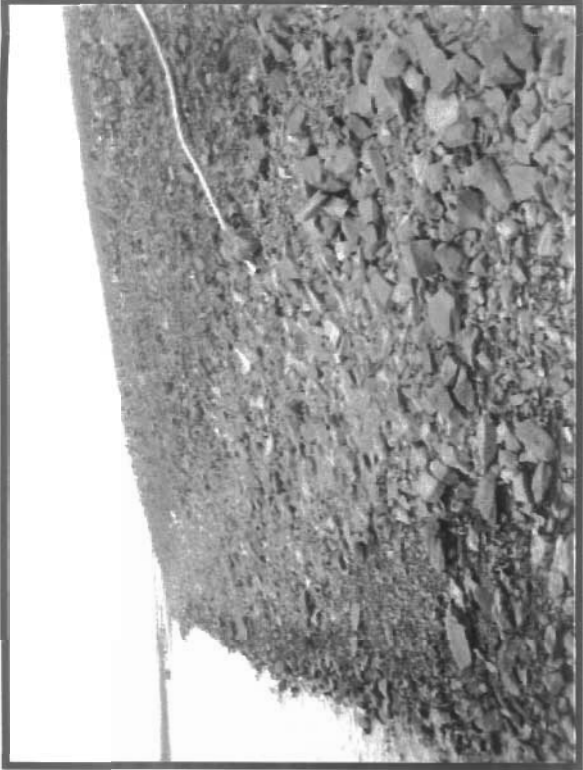


Photo 62 shows the riprap on the upstream side of Dam 4.

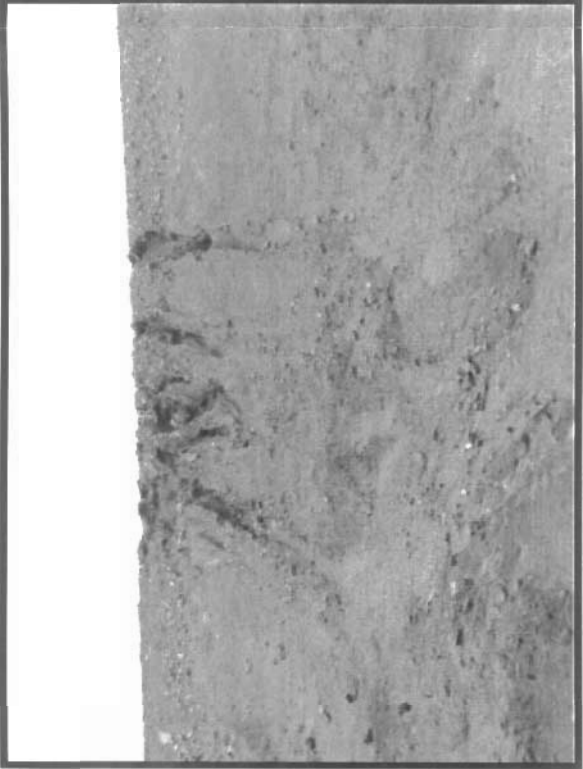


Photo 68 shows four erosional gullies which should be backfilled.



Photo 67 shows a narrow erosional gully which should be backfilled.

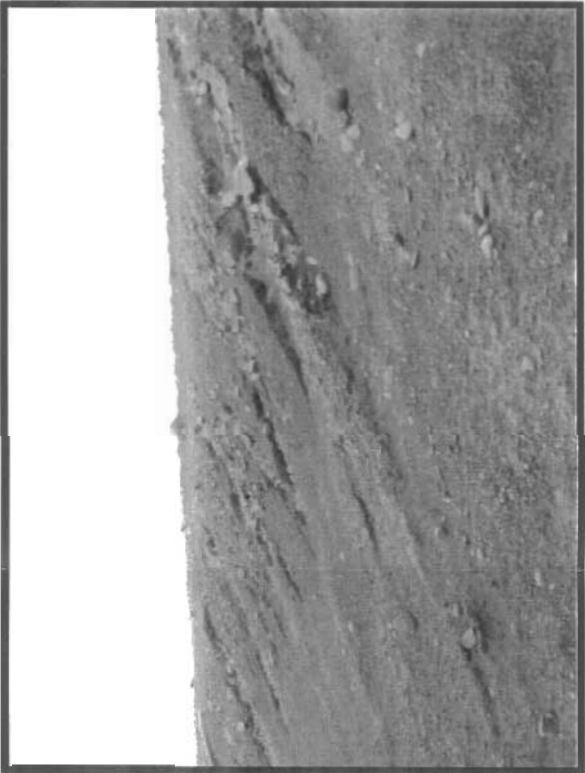


Photo 71 shows a number of erosional gullies right at the west abutment on the downstream side. These should be backfilled to prevent any additional erosion.

CLIENT:

KINROSS

AS A MUTUAL PROTECTION TO OUR CLIENT, THE PUBLIC AND OURSELVES, ALL REPORTS AND DRAWINGS ARE SUBMITTED FOR THE CONFIDENTIAL INFORMATION OF OUR CLIENT FOR A SPECIFIC PROJECT AND AUTHORIZATION FOR USE AND/OR PUBLICATION OF DATA STATEMENTS CONCLUSIONS OR ABSTRACTS FROM OR REGARDING OUR REPORTS AND DRAWINGS IS RESERVED PENDING OUR WRITTEN APPROVAL.

	-	-	-	-	-	-
	-	-	-	-	-	-
	-	-	-	-	-	-
	-	-	-	-	-	-
REV	DATE	REVISION NOTES	DRAWN	CHECKED	APPROVED	

SCALE:	N/A
DATE:	October 2004
DRAWN:	SLF
DESIGNED:	JWC
CHECKED:	JWC
APPROVED:	JWC

PROJECT	ANNUAL INSPECTION OF PERIMETER TAILINGS DAMS				
TITLE	DAM 4 INSPECTION PHOTOS				
PROJECT No.	0256-009-02	DWG No.	10	REV.	0

BGC

BGC Engineering Inc.
AN APPLIED EARTH SCIENCES COMPANY

Calgary Alberta Phone: (403) 250-5185



Photo 54 shows the crest of this dam and the downstream side. Windrows have been formed by recent grading activity for vehicle access.



Photo 56 shows the view of the downstream face on the crest.

AS A MUTUAL PROTECTION TO OUR CLIENT, THE PUBLIC AND OURSELVES, ALL REPORTS AND DRAWINGS ARE SUBMITTED FOR THE CONFIDENTIAL INFORMATION OF OUR CLIENT FOR A SPECIFIC PROJECT AND AUTHORIZATION FOR USE AND/OR PUBLICATION OF DATA STATEMENTS CONCLUSIONS OR ABSTRACTS FROM OR REGARDING OUR REPORTS AND DRAWINGS IS RESERVED PENDING OUR WRITTEN APPROVAL.

SCALE:	N/A	DESIGNED:	JWC
DATE:	Oct 2004	CHECKED:	JWC
DRAWN:	SLF	APPROVED:	JWC

CLIENT: **KINROSS**
Gold Corporation

PROJECT: ANNUAL INSPECTION OF PERIMETER TAILINGS DAMS		
TITLE: DAM 5 INSPECTION PHOTOS		
PROJECT No.	DWG. No.	REV.
0256-009-02	11	0

BGC

BGC Engineering Inc.
AN APPLIED EARTH SCIENCES COMPANY

Calgary, Alberta.

Phone: (403) 250-5185

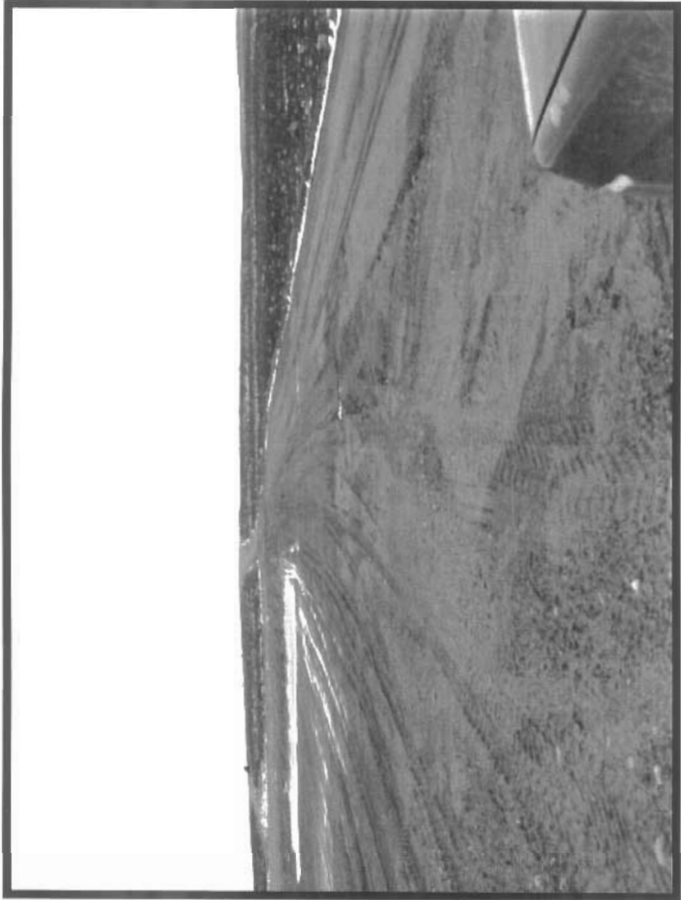


Photo 41 shows the crest of Dam 6 looking towards the south abutment. As can be seen, reclamation and placement of cover has occurred on the upstream side hence, covering over the majority of the tailings.

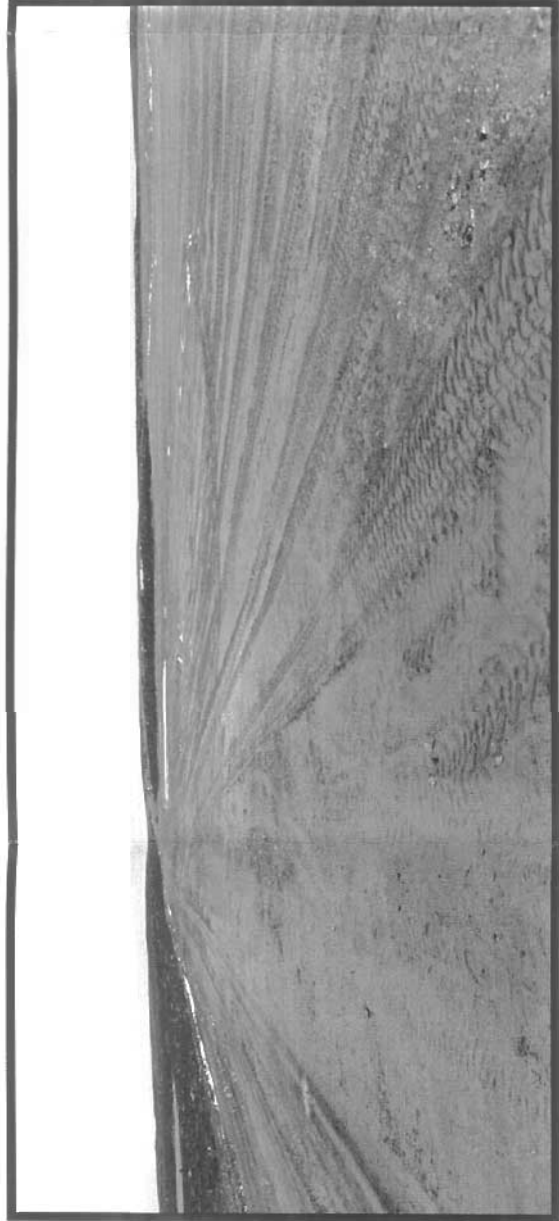


Photo 45 & 46 are a two shot panoramic showing the upstream side and the crest of Dam 6. A local high point exists some 100 metres to the east of this dam. As a result, localized drainage reports to the remnant pond.



Photo 47 shows a view of the downstream toe looking towards the north. Construction traffic has caused a number of ruts and pushed up some windrows on the toe crest.

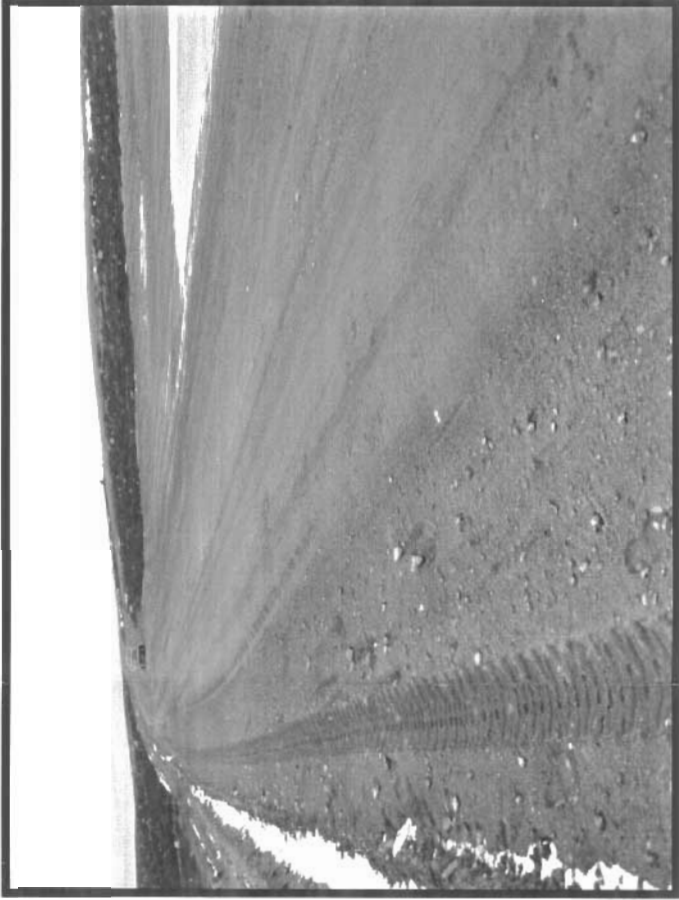


Photo 49 shows a view of the remnant pond versus the crest of this dam.

CLIENT:

KINROSS
CORPORATION

AS A MUTUAL PROTECTION TO OUR CLIENT, THE PUBLIC AND OURSELVES, ALL REPORTS AND DRAWINGS ARE SUBMITTED FOR THE CONFIDENTIAL INFORMATION OF OUR CLIENT FOR A SPECIFIC PROJECT AND AUTHORIZATION FOR USE AND/OR PUBLICATION OF DATA STATEMENTS CONCLUSIONS OR ABSTRACTS FROM OR REGARDING OUR REPORTS AND DRAWINGS IS RESERVED PENDING OUR WRITTEN APPROVAL.

	-	-	-	-	-	-
	-	-	-	-	-	-
	-	-	-	-	-	-
REV:	DATE	REVISION NOTES	DRAWN	CHECKED	APPROVED	

SCALE:	N/A
DATE:	October 2004
DRAWN:	SLF
DESIGNED:	JWC
CHECKED:	JWC
APPROVED:	JWC

PROJECT	ANNUAL INSPECTION OF PERIMETER TAILINGS DAMS				
TITLE	DAM 6 INSPECTION PHOTOS				
PROJECT No.	0256-009-02	DWG No.	12	REV.	0

BGC

BGC Engineering Inc.
AN APPLIED EARTH SCIENCES COMPANY

Calgary Alberta Phone: (403) 250-5185

APPENDIX 1 - SITE INSPECTION MEMO



BGC ENGINEERING INC.

AN APPLIED EARTH SCIENCES COMPANY

#1605 - 840 7th Avenue S.W., Calgary, Alberta, Canada. T2P 3G2
Phone (403) 250-5185 Fax (403) 250-5330

PROJECT MEMORANDUM

To:	Kinross Gold Corp., Lupin Operation	Fax No.:	provided at site
Attention:	Mr. Mike Tansey, P.Eng.	CC:	-
From:	Mr. Jim Cassie, P.Eng.	Date:	Sept. 9, 2004
Subject:	2004 Annual Inspection of Perimeter Tailings Dams Lupin Mine, NU		

No. of Pages (including this page): 2 Pages

Project No: 0256-009-02

The following memo provides some comments on the current conditions and recommended maintenance items following the inspection of the tailings dams and waste containment dikes on September 8 and 9, 2004.

Dam 1A

- Minor cracking continues to occur adjacent to the siphon pipes at the downstream access road berm.
- One small sinkhole is located in the access road fill, directly adjacent to the center syphon pipe. This sinkhole should be backfilled.
- No other maintenance is suggested.

Dam 1B

- No maintenance suggested.

Dam 1C

- Grade over one small sinkhole on the downstream face, approximately 15 m south of the north abutment.

Dam 2

- Minor seep at toe of north abutment continues to flow.
- No maintenance is required.

This communication is intended for the use of the above named recipient. Any unauthorized use, copying, review or disclosure of the contents by other than the recipient is prohibited.

Dam 3

- No maintenance is required.

Dam 4

- Recent grading of the crest have formed numerous windrows of sandy material on the edges of the crest. When fill haulage is completed, these windrows need to be graded away to allow for proper drainage from the crest of this dam.
- Numerous erosional gullies on the downstream face, some at the east end (narrow but incised fairly deeply) and some at the west end (that progress down towards the toe), should be backfilled.

Dam 5

- Recent grading of the crest have formed numerous windrows of sandy material on the edges of the crest. When fill haulage is completed, these windrows need to be graded to allow for proper drainage from the crest of this dam. Backfill the erosional gullies on the downstream slope formed from the current drainage.

Dam 6

- Cover placement on the upstream side of Dam 6 has reduced the amount of freeboard available to retain water that may result during spring freshet or large precipitation events. Please ensure that any surficial drainage from the higher cover area does not drain across the crest leading to possible dam erosion.

All of the noted work is relatively minor but should be undertaken in the near future before snowfall occurs to prevent potential further damage from occurring next spring.

Respectfully submitted,

BGC Engineering Inc.

per:

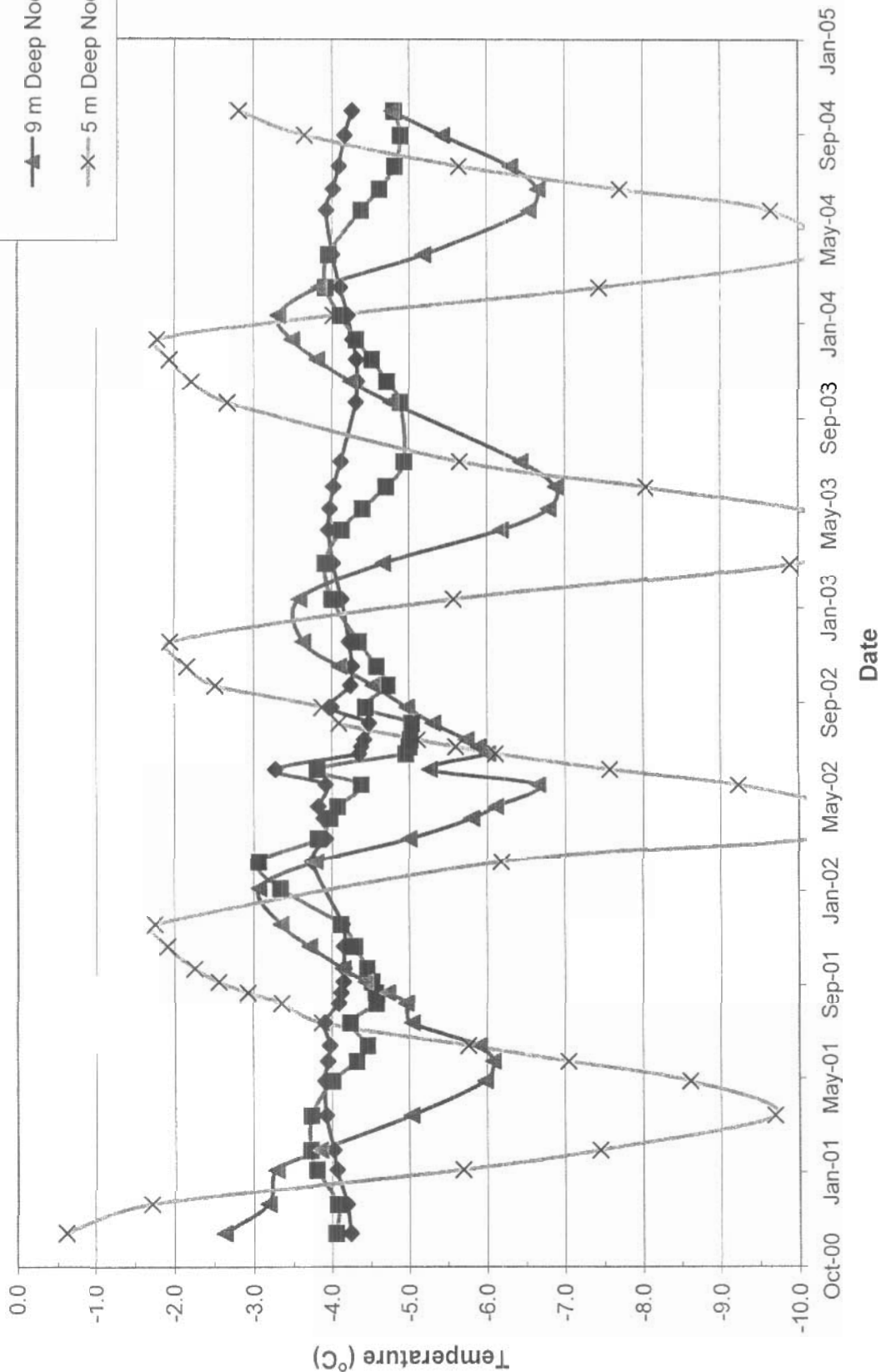
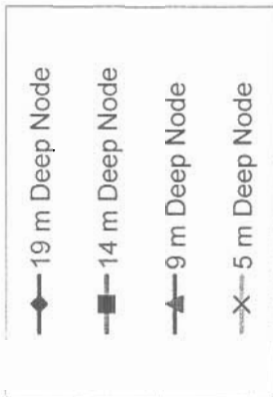
James W. Cassie, M.Sc., P.Eng.

Specialist Geotechnical Engineer

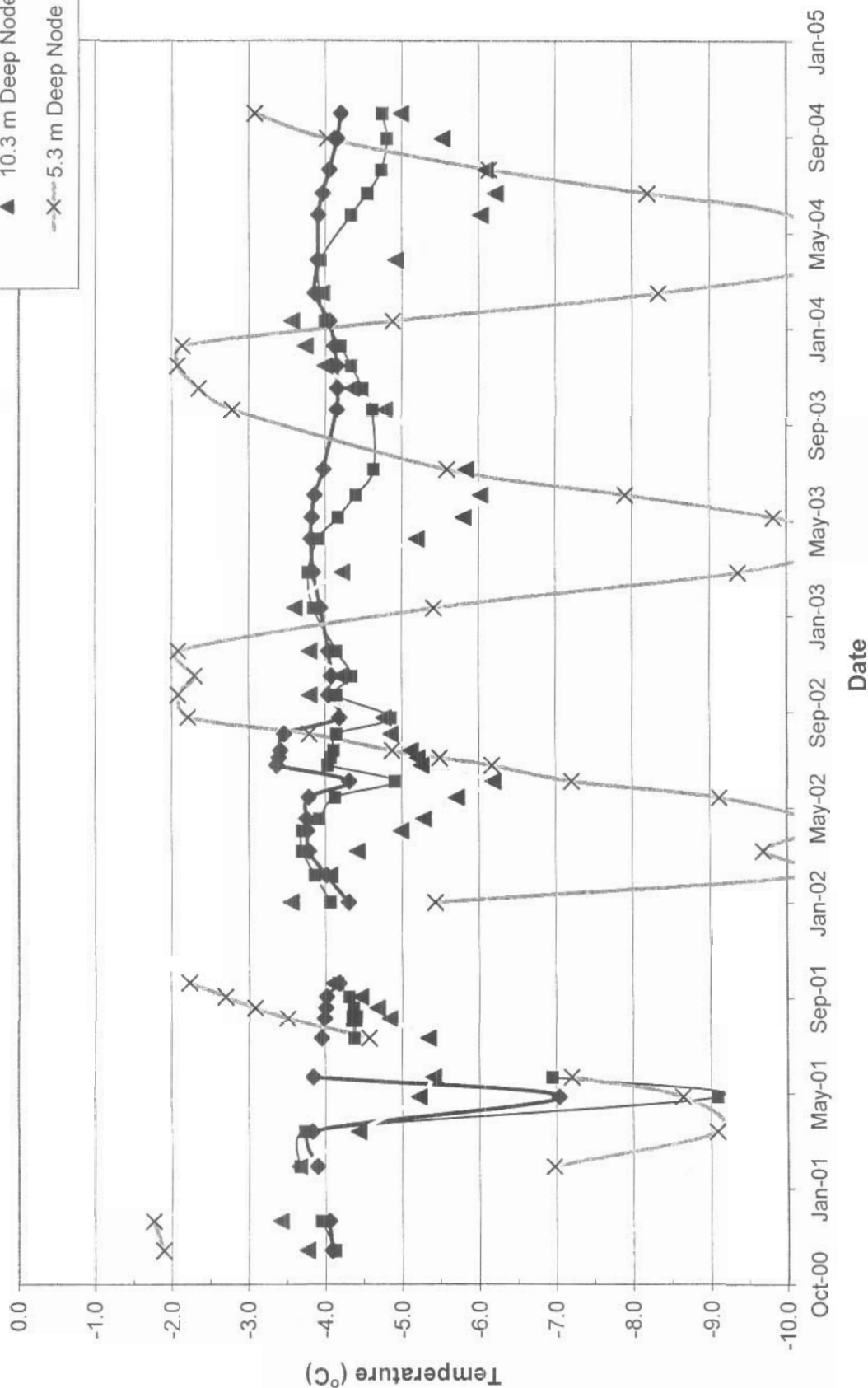
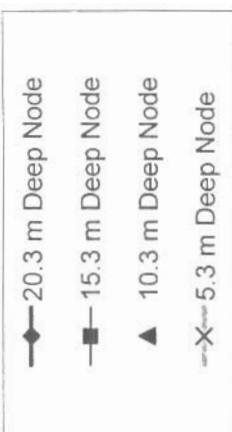
(jcassie@bgcengineering.ca)

APPENDIX 2 - THERMISTOR PLOTS FOR VARIOUS DAMS

Long Term Plot for Deep Nodes in D1A-00-01
(Crest of Dam 1A, South End)

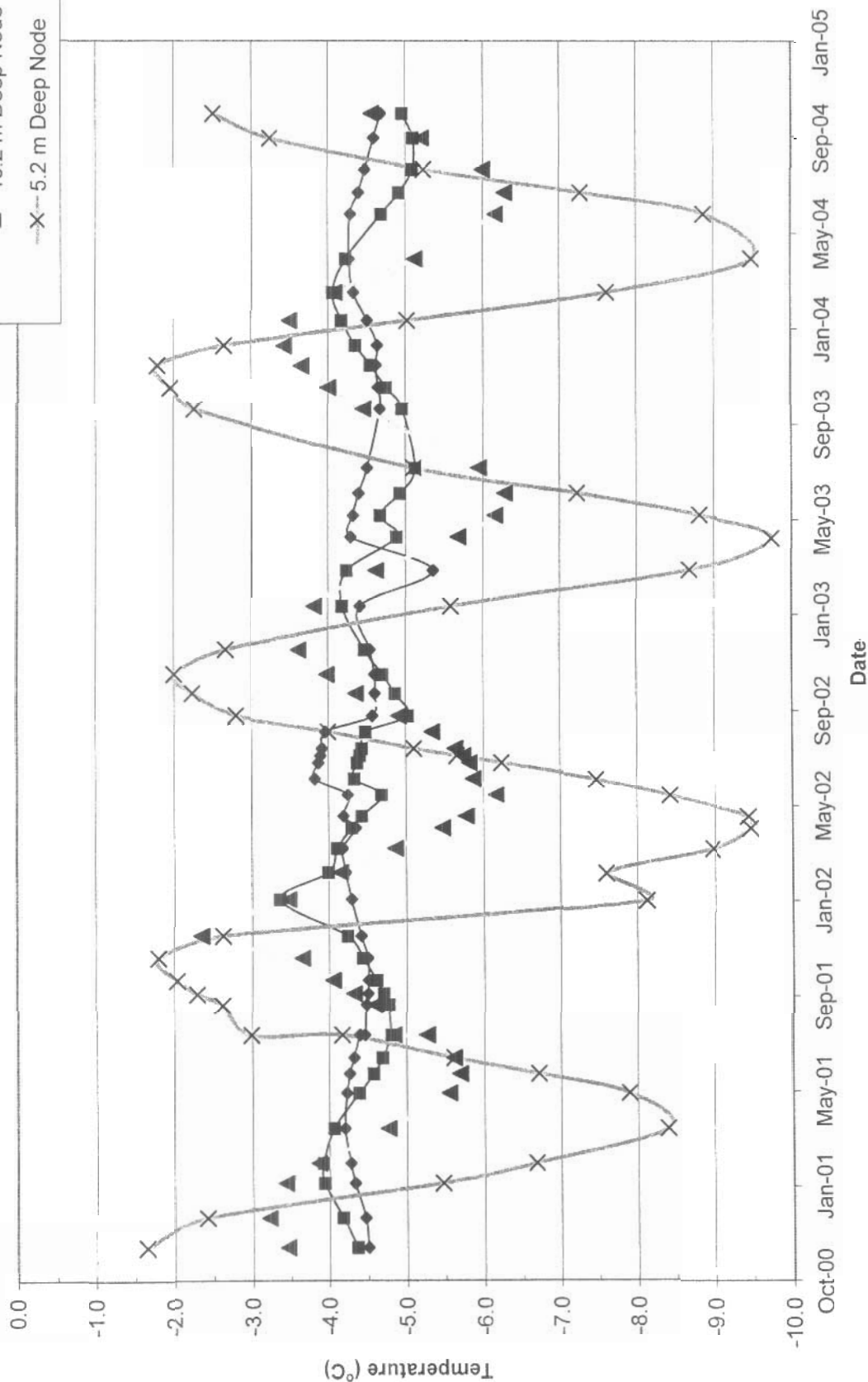


Long Term Plot for Deep Nodes at D1A-00-02 (Crest of Dam 1A, North End)

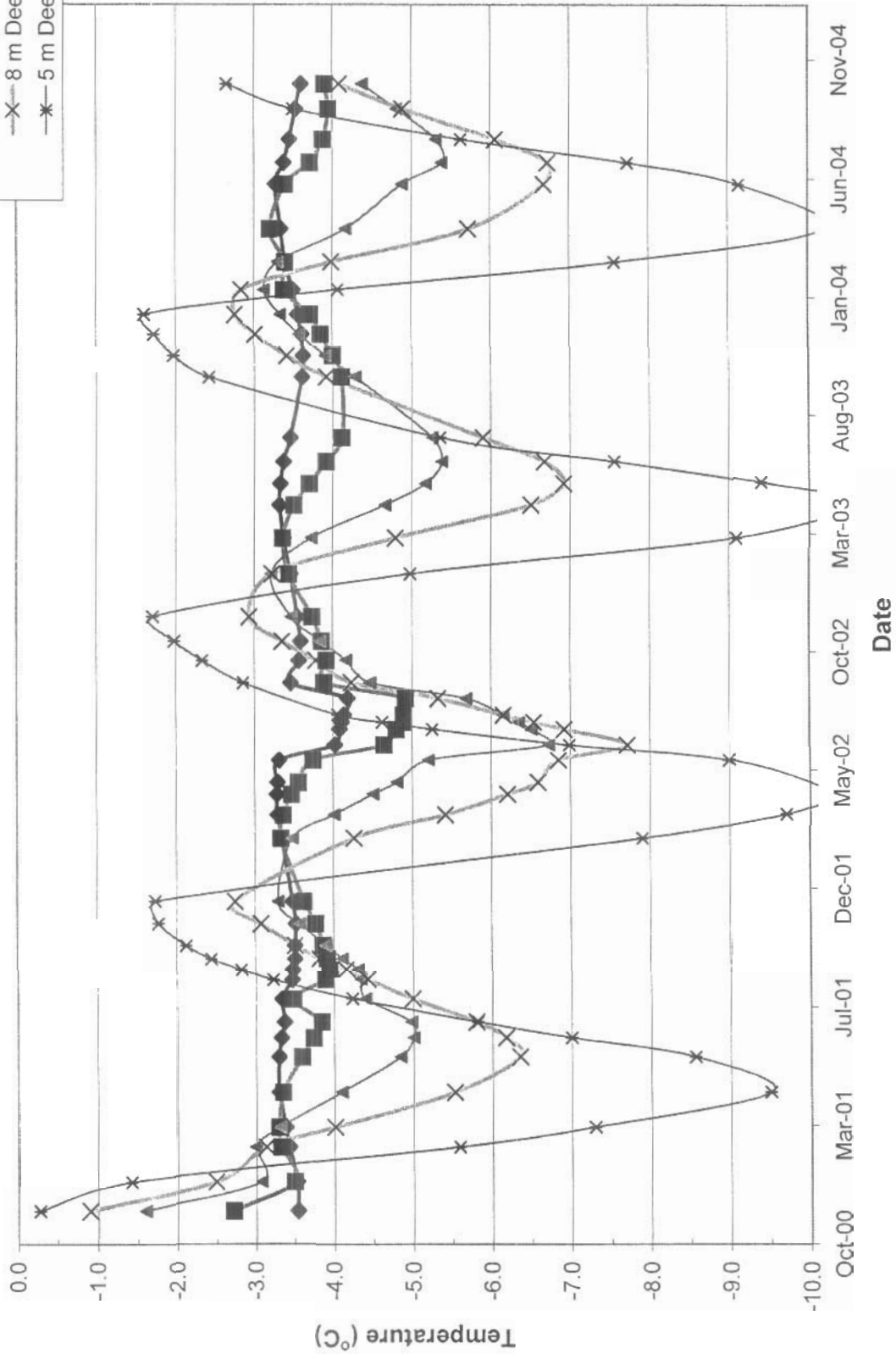


Long Term Plot for Deep Nodes in D2-00-2
(Downstream side of crest of Dam 2, north end)

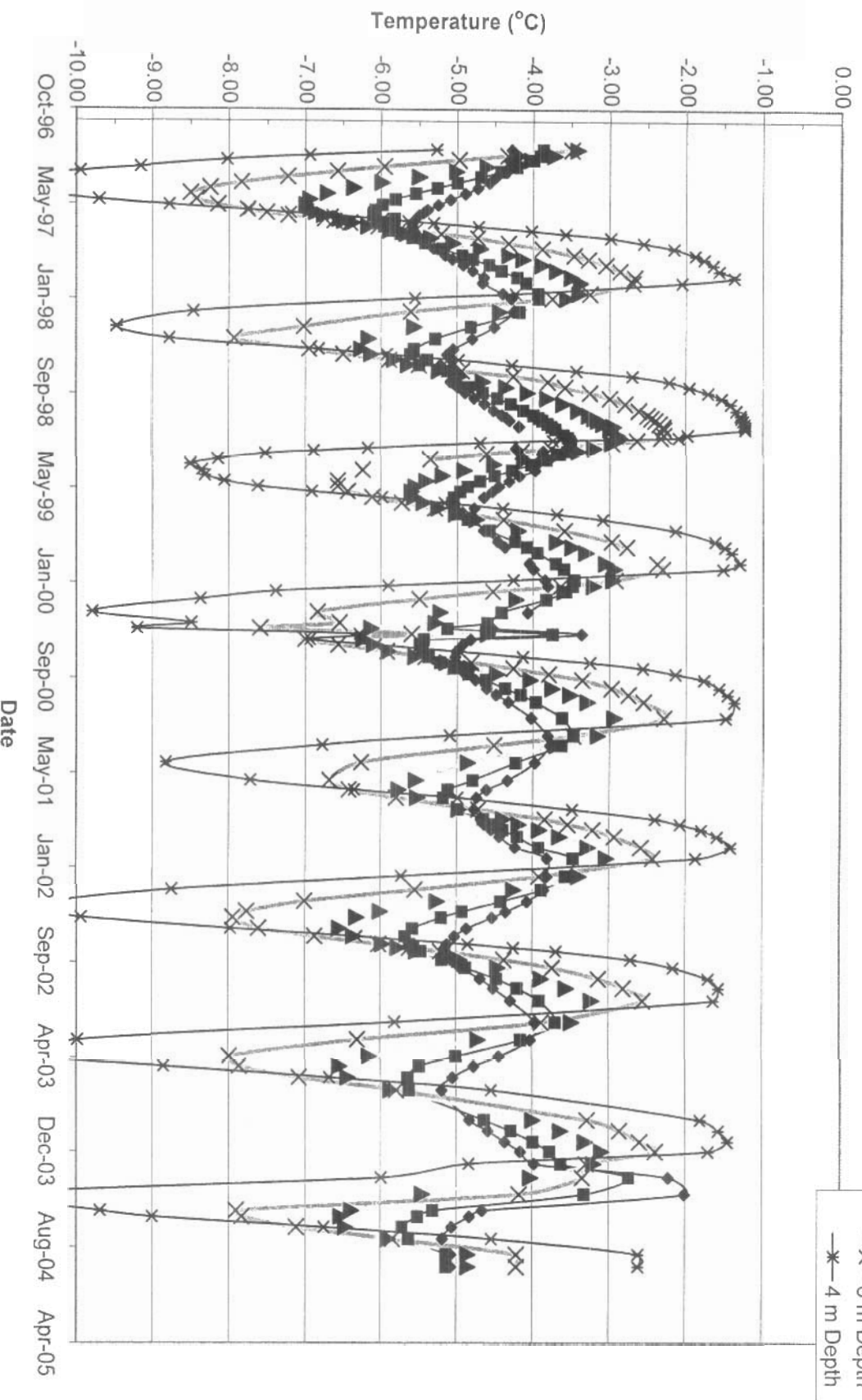
- ◆— 20.2 m Deep Node
- 15.2 m Deep Node
- ▲— 10.2 m Deep Node
- X— 5.2 m Deep Node



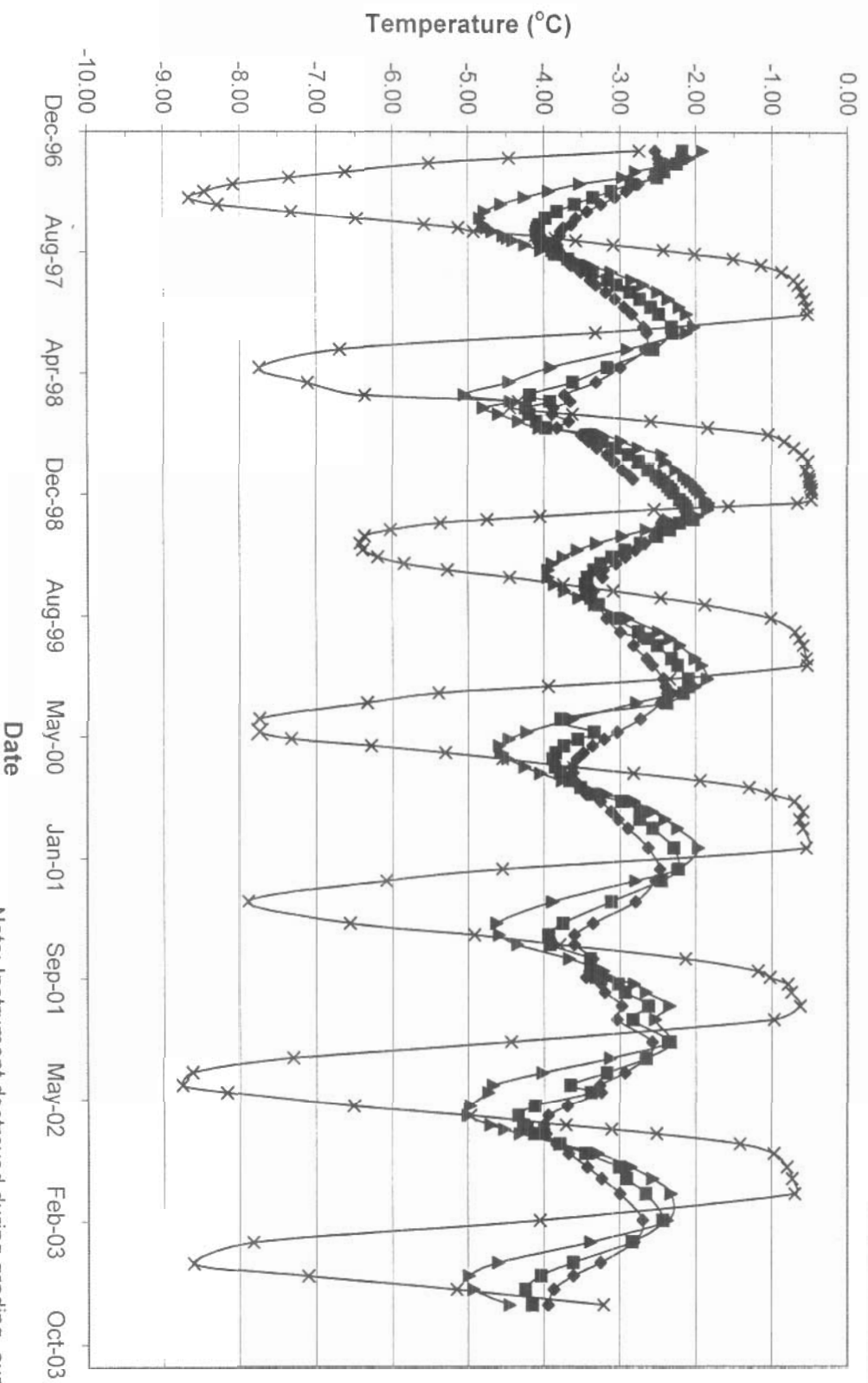
Long Term Plot for Deep Nodes on D2-00-3
(Crest of Dam 2, mid to north end of dam)



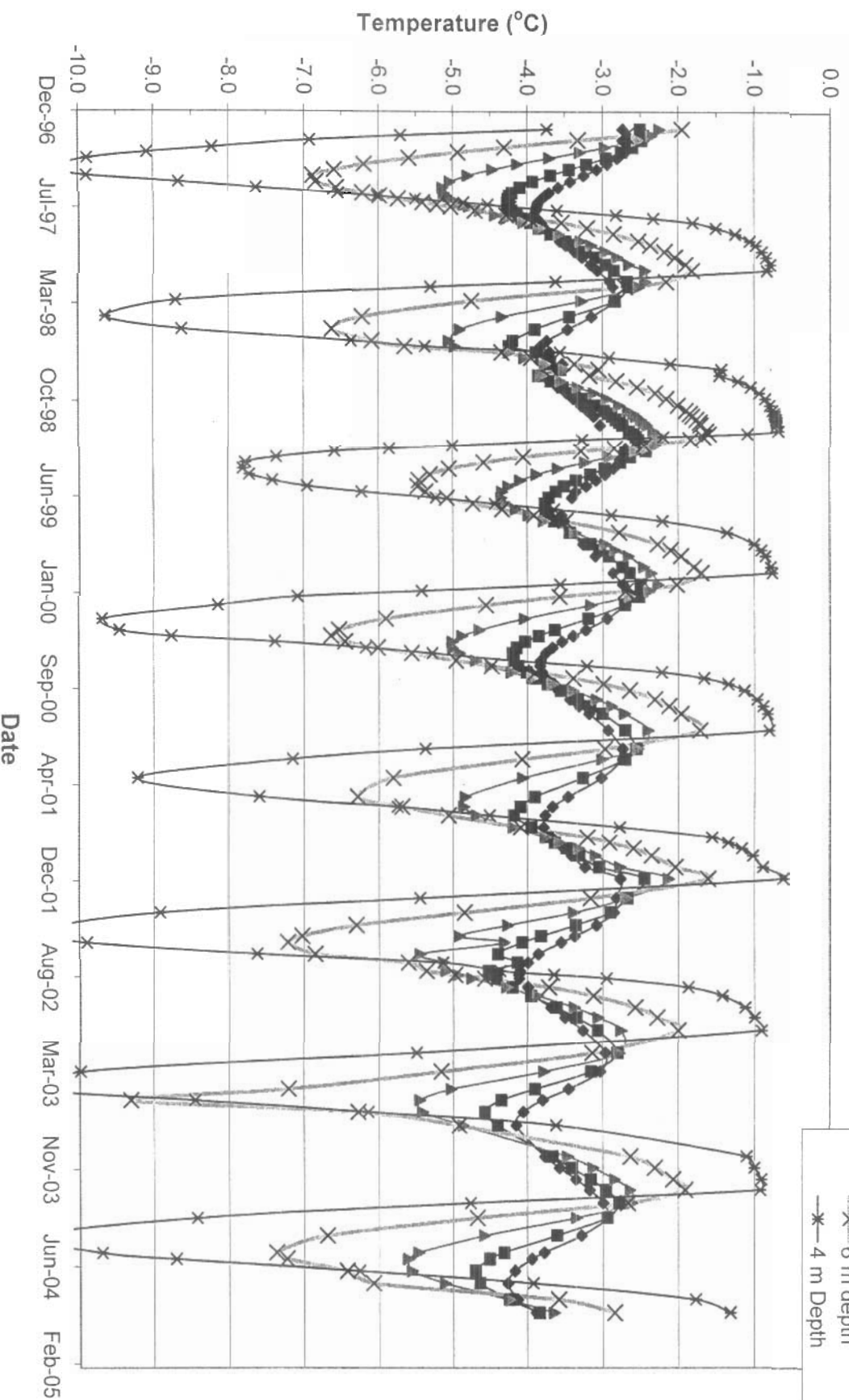
Long Term Plot for Deeper Nodes in TD4-1
(Crest of Dam 4, Far East End)



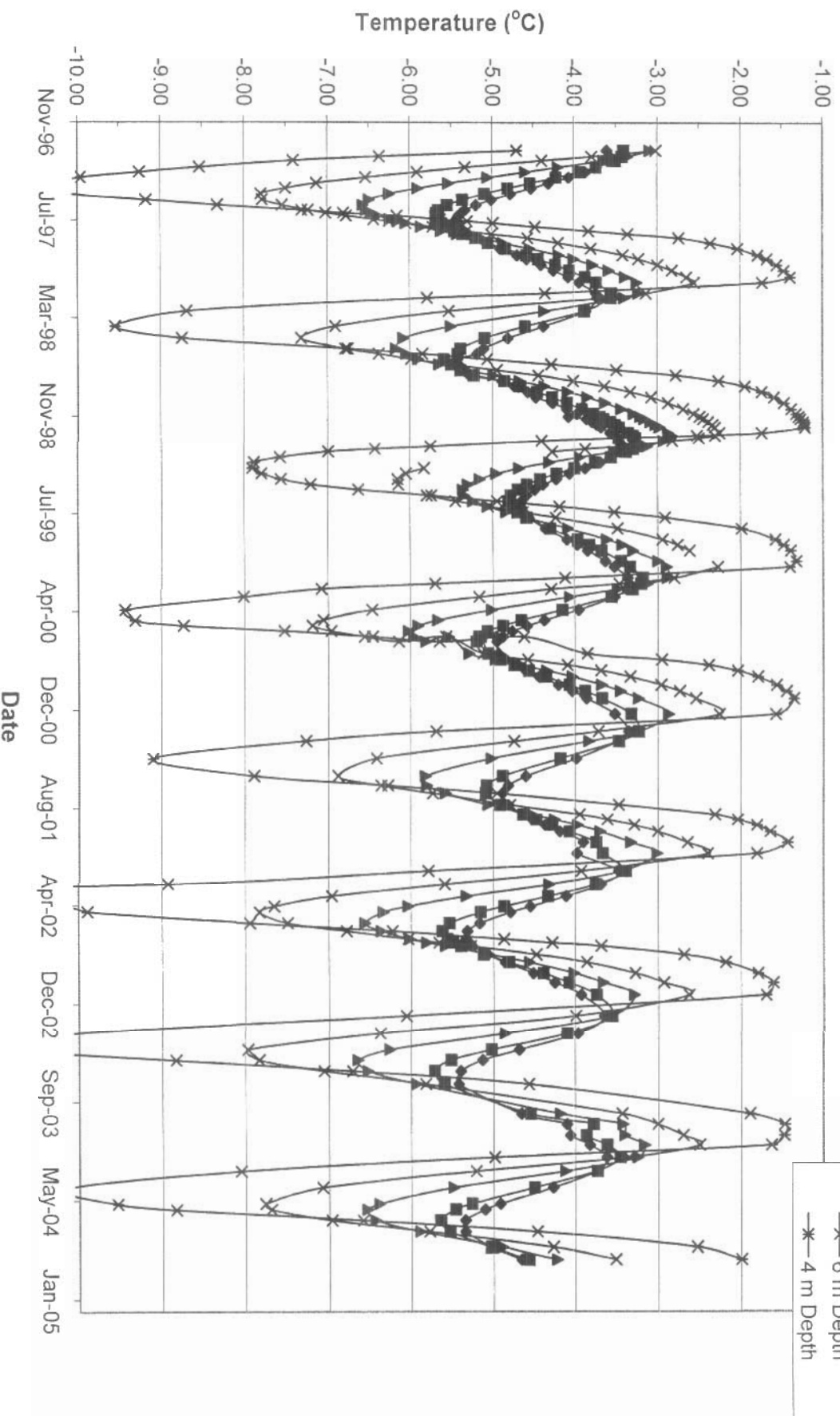
Long Term Plot for TD4-2
(Crest of Dam 4, East End, West of TD4-1)



Long Term Plot for TD4-3
(Crest of Dam 4, West End, Just East of TD4-4)



Long Term Plot for TD4-4
(Crest of Dam 4, Far West End)



Long Term Plot for Nodes in TC1-3
(Located in Reclaimed Tailings Area in Cell 1 with
~0.6 m of Sand and Gravel Cover)

