



Meadowbank Gold Project

Water License Technical Meetings

February 26 – 27, 2008

Project Location

AEM



Agnico – Eagle Mines Limited

Who are we?

AEM

- Head office in Toronto
- Have been in the gold mining business for 35 years
- Senior management team has been together for over 20 years
- Main operations located in Northwestern Quebec
- We have over 1,400 employees
- We are mine builders and Operators



Agnico – Eagle Mines Limited

Core Values

AEM

- Work closely with our employees
- Provide training programs and career development
 - Low turnover - low absenteeism
 - Many employees have been with us for 20 years
 - Student scholarship program and employment
- Involved in the local communities
 - Policy of using local services as much as possible
 - Support local organizations and charities
- Employee assistance programs
 - Financial, legal, medical
 - Computer purchase plans
- Insurance and benefit plans



- Highest standards used in all jurisdictions
- Have significant in house expertise
- Excellent relationships with all regulatory agencies
- Transparent – open door policy
- No infractions at any of our operations and projects



Agnico – Eagle Mines Limited

Strategy

AEM

- Financially strong – no debt
- Financing for Meadowbank is in place
- Long term commitment to all of our projects and regions
- Meadowbank is the beginning of our presence in Nunavut
- Our objective is to find more gold and acquire other mining properties
- Hire local labour as much as possible



NUNAVUT CHALLENGES

AEM

- Agnico-Eagle recognizes the significant challenges residents and communities of Nunavut are dealing with;
- Our Company wants to work with communities to be part of the solution and not create more problems;
- Project offers training opportunities, steady employment and way for youth to stay in the communities



About The Meadowbank Project

Agnico-Eagle Preliminary Estimates

AEM

Mine Life:	8 - 10 Years
------------	--------------

Mine Throughput:	8,500 tpd
------------------	-----------

Metallurgical Recovery:	93%
-------------------------	-----

Mining Method:	Open Pit
----------------	----------

Mine is on IOL Land – Mineral rights to NTI and Canada

Average annual production:

Years 1 to 4:	400,000 oz Au
---------------	---------------

Life of Mine:	350,000 oz Au
---------------	---------------

Est. Total Cash Cost per oz:

Years 1 to 4:	\$230
---------------	-------

Life of Mine:	\$250
---------------	-------

Open Pit Mineral Reserve:	3,500,000 oz Au
---------------------------	-----------------



IMPACT OF THE MEADOWBANK PROJECT

AEM

- Construction expenditures of over \$400 million
- Operating expenditures of over \$875 million over 10 year life of mine
- \$250 million spent in Nunavut
- 350 jobs during construction – 75 local
- 400 jobs during operations – maximize local employment
- Direct and indirect business opportunities for contractors and suppliers
- \$150 million in direct fuel tax, property tax, income tax and royalties to government
- Potential to stimulate further exploration and mine development

- The Meadowbank Project underwent a Part V Environmental Assessment under the Nunavut Land Claims Agreement under the auspices of the Nunavut Impact Review Board (Project was referred to NIRB for a Part V Assessment in September of 2003);
- NIRB issued a positive recommendation on August 30, 2006
- Minister of Indian and Northern Affairs Canada accepted the NIRB decision which led to the issue of a Project Certificate on December 30, 2006
- Project Certificate clears the way for all regulators to proceed with their respective license and/or permitting processes.

Major Permits required are summarized as follows:

- Water Licenses from the Nunavut Water Board
 - Class A Water License for Mine site
 - Class B Water License for Baker Lake Marshalling facilities & all weather access road
 - Class B Water License for Starter Pit and Camp Expansion
 - Class B Water License for Exploration Camp
- MMER Schedule 2 Listing of the tailings containment lake
- DFO Fisheries Compensation Agreement and Fisheries Act Authorizations
- Commercial Mining Lease with the Kivalliq Inuit Association (the land owner)
- Production Royalty Agreement with the Nunavut Tunngavik Inc.
- Approvals from Transport Canada under the Navigable Waters Protection Act

Where is the Project Now

AEM

- Construction of all weather road soon to be complete. Supplies being trucked from Baker Lake to mine site
- Camp to be constructed and commissioned by late March. Constructing the pads and foundations for the plant and maintenance facilities.
- Need the Type A Water License to start the next phase of construction – Construction of the East Dike and dewatering of an arm of Second Portage Lake for the Portage Pit and TSF – early July
- Hope to start pre-development of Portage Starter Pits in March under an amended Type B Water License. This involves stripping of overburden and quarrying waste rock for use in constructing the East Dike

Permitting Status – Water Licensing Update

AEM

- Class A Water License
 - Application submitted in August 2007
 - NWB ruled the application to be in conformity/and complete in December 2007
 - Technical Meeting with interveners and Board staff to address outstanding issues scheduled for the last week in February in Baker Lake
 - Public Hearing – Scheduled for mid April in Baker Lake
 - Board Decision Report – minimum 30 days after hearing
 - Acceptance by INAC Minister – minimum 45 days after Board Decision
 - Class A Water License likely received in late June

Permitting Status – Commercial Lease

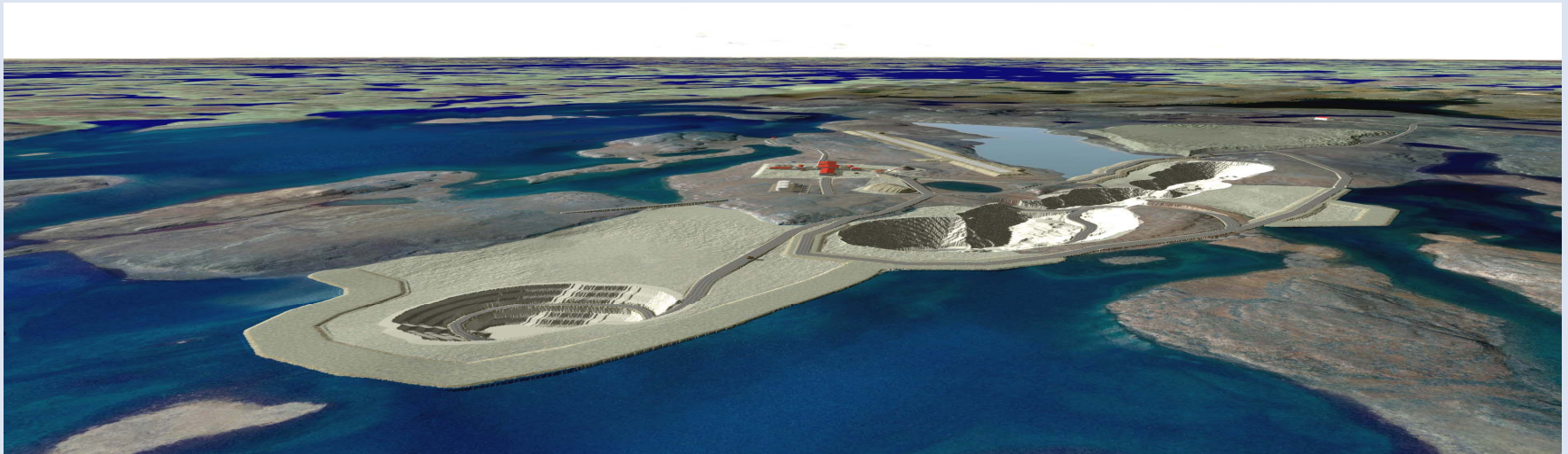
AEM

- Still negotiating a commercial lease with the Kivalliq Inuit Association
- AEM and KIA have reached agreement on Water Compensation under the Nunavut Land Claims Agreement and land lease rent payments.



Meadowbank Facilities

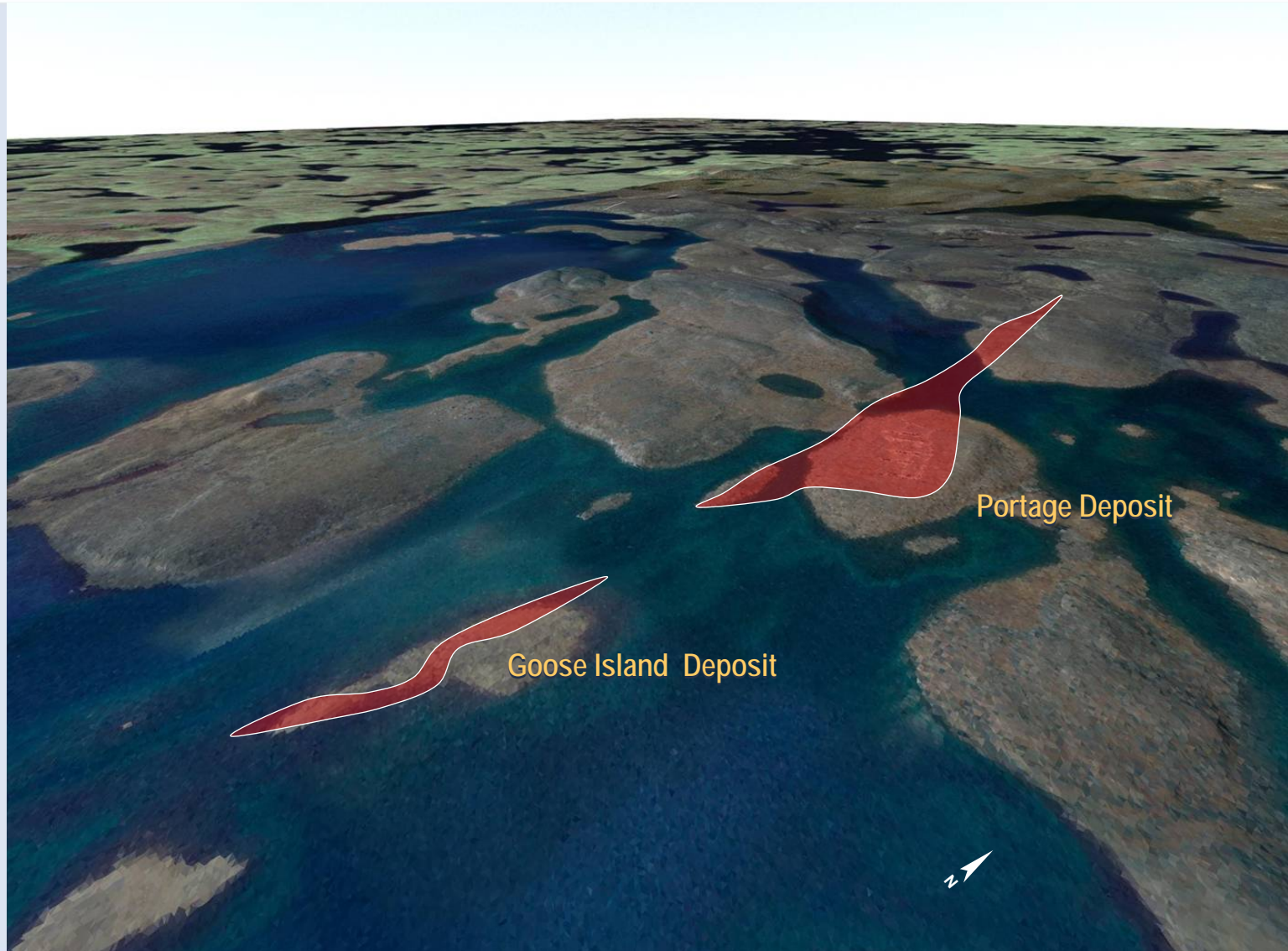
- ☐ Three open pit mines to be developed starting with Portage, Goose Island, Vault
- ☐ Three water retention dykes to construct at mine: East, Bay Zone, Goose Island
- ☐ Two tailings dykes to construct
- ☐ Dewatering for Portage mine
- ☐ Dewatering of tailings impoundment area



Meadowbank Project

Original Site

AEM



Meadowbank Project

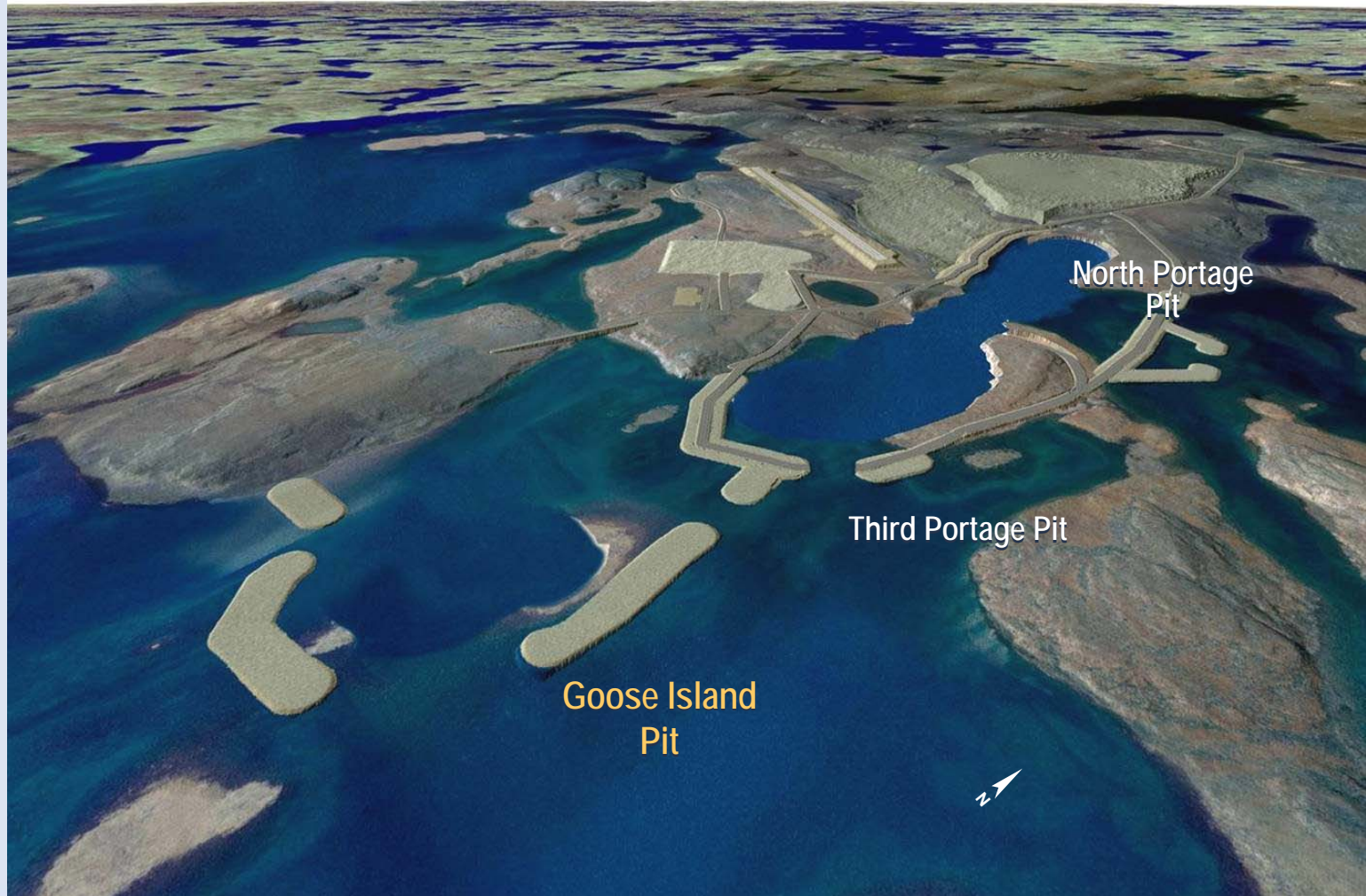
Mine Production

AEM



Meadowbank Project Closure

AEM



Meadowbank Plant Site – Conceptual View

AEM



UPDATE – ACCESS ROAD

AEM

■ Access Road

- Access road now just beyond kilometre 100
- To be completed by early March
- Early 2008 - transport of camp, mine equipment, concrete batch plant
- Hauling supplies across an Ice Road across Second Portage Lake that by passes the last 10 km of the all weather road



UPDATE – BAKER LAKE FUEL TANK FARM

AEM

- Tank farm – Baker Lake
 - Tank #1 was complete on Sept 28 and is now receiving fuel
 - Tank #2 now complete
 - Containment liner is complete
 - Tanks #3 and 4 to be constructed in 2008



Health and Safety Report: UPDATE ON MEADOWBANK

AEM

Name	Manpower			Accidents		
	July	August	September	July	August	September
Nuna Logistics	150	145	158	0	0	0
Meadowbank AEM	33	49	56	0	0	0
Boart Longyear	18	23	27	0	0	2
GemSteel	0	14	17	0	0	0
BLCS	12	13	18	0	1	0
TOTAL	213	244	276	0	1	2

20 of 56 AEM's employees are Inuit
64 OF 158 Nuna's employees are Inuit

Potential job opportunities for local employee: Meadowbank Job Estimate (2010)

AEM

Job Type and Pre-Requisites	Number of Jobs	% of Total
General Labour - May require basic literacy skills. Training on-the-job.	24	11%
Equipment Operators - Requires Basic Literacy Skills, job experience and certification for equipment operations (eg. HEO training, Class 5 license, air brakes, WHMIS, First Aid etc.)	108	50%
Office and Technical Support - Will require High School Diploma and experience or on-the job training	11	5%
Trades Apprentices - High School Diploma plus trades apprentice entrance requirements	14	6%
Journeyman - Journeyman's trade certificate	52	24%
Technical/Professional - Post secondary diploma or degree	9	4%
TOTAL	218	100%

Summary

AEM

- The Meadowbank mine building has started
- There is excellent potential to find more gold – good results to date
- There is excellent support for the project
- The project is fully financed
- Agnico-Eagle intends to work with all the stakeholders in the region
- Will continue the work and relationships developed by Cumberland –respect IIBA
- Training local personnel a priority



