

CUMBERLAND
RESOURCES LTD.

MEADOWBANK GOLD PROJECT

BASELINE ARCHAEOLOGICAL REPORT

JANUARY 2005

TABLE OF CONTENTS

DESCRIPTION OF SUPPORTING DOCUMENTATION

EIA DOCUMENTATION ORGANIZATION CHART

PROJECT LOCATION MAP

PROPOSED SITE LAYOUT

SECTION 1 • INTRODUCTION.....1-1

SECTION 2 • STUDY AREA.....2-1

2.1 Area A – Main Facilities.....2-1

2.2 Area B – Winter Road.....2-1

2.3 Area C – Outside the Mine Area.....2-2

SECTION 3 • METHODS OF INVESTIGATION3-1

SECTION 4 • SURVEY RESULTS.....4-1

SECTION 5 • CONCLUSIONS.....5-1

SECTION 6 • REFERENCES.....6-1

LIST OF PHOTOGRAPHS

4.1 Tent Rings at Site A-74-4

4.2 Qarmat at Site B-6.....4-5

4.3 Hearth at Site A-114-6

4.4 Grave at Site A-44-6

4.5 Kayak Stand at Site B-524-7

4.6 Scraper at Site A-54-8

LIST OF APPENDICES

A Study Area Maps & Site Records for 2003 Archaeological Survey

B Study Area Maps & Site Records for 1999 Archaeological Survey

DESCRIPTION OF SUPPORTING DOCUMENTATION

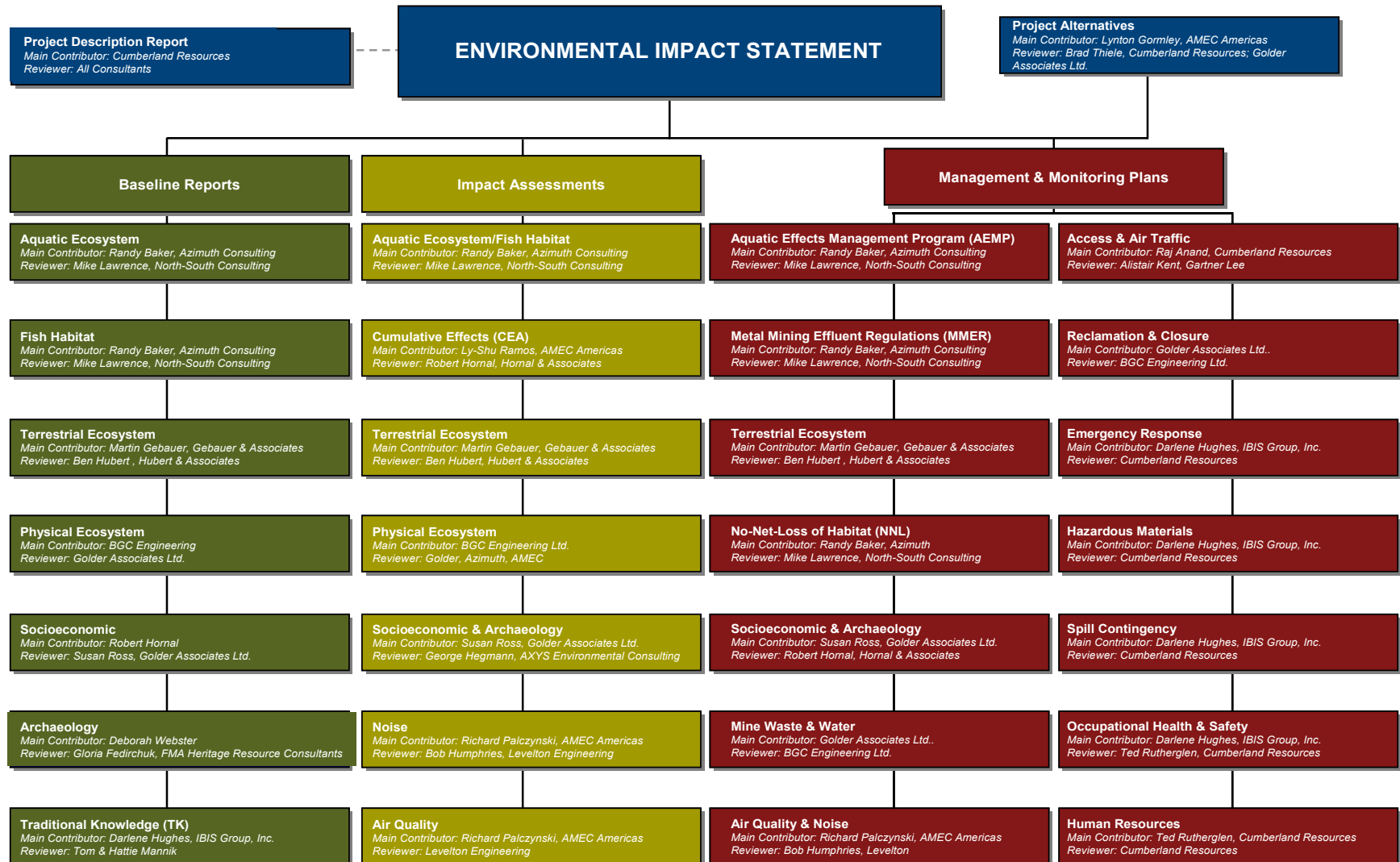
Cumberland Resources Ltd. (Cumberland) is proposing to develop a mine on the Meadowbank property. The property is located in the Kivalliq region approximately 70 km north of the Hamlet of Baker Lake on Inuit-owned surface lands. Cumberland has been actively exploring the Meadowbank area since 1995. Engineering, environmental baseline studies, and community consultations have paralleled these exploration programs and have been integrated to form the basis of current project design.

The Meadowbank project is subject to the environmental review and related licensing and permitting processes established by Part 5 of the Nunavut Land Claims Agreement. To complete an environmental impact assessment (EIA) for the Meadowbank Gold project, Cumberland followed the steps listed below:

1. Determined the VECs (air quality, noise, water quality, surface water quantity and distribution, permafrost, fish populations, fish habitat, ungulates, predatory mammals, small mammals, raptors, waterbirds, and other breeding birds) and VSECs (employment, training and business opportunities; traditional ways of life; individual and community wellness; infrastructure and social services; and sites of heritage significance) based on discussions with stakeholders, public meetings, traditional knowledge, and the experience of other mines in the north.
2. Conducted baseline studies for each VEC and compared / contrasted the results with the information gained through traditional knowledge studies (see Column 1 on the following page for a list of baseline reports).
3. Used the baseline and traditional knowledge studies to determine the key potential project interactions and impacts for each VEC (see Column 2 for a list of EIA reports).
4. Developed preliminary mitigation strategies for key potential interactions and proposed contingency plans to mitigate unforeseen impacts by applying the precautionary principle (see Column 3 for a list of management plans).
5. Developed long-term monitoring programs to identify residual effects and areas in which mitigation measures are non-compliant and require further refinement. These mitigation and monitoring procedures will be integrated into all stages of project development and will assist in identifying how natural changes in the environment can be distinguished from project-related impacts (monitoring plans are also included in Column 3).
6. Produce and submit an EIS report to NIRB.

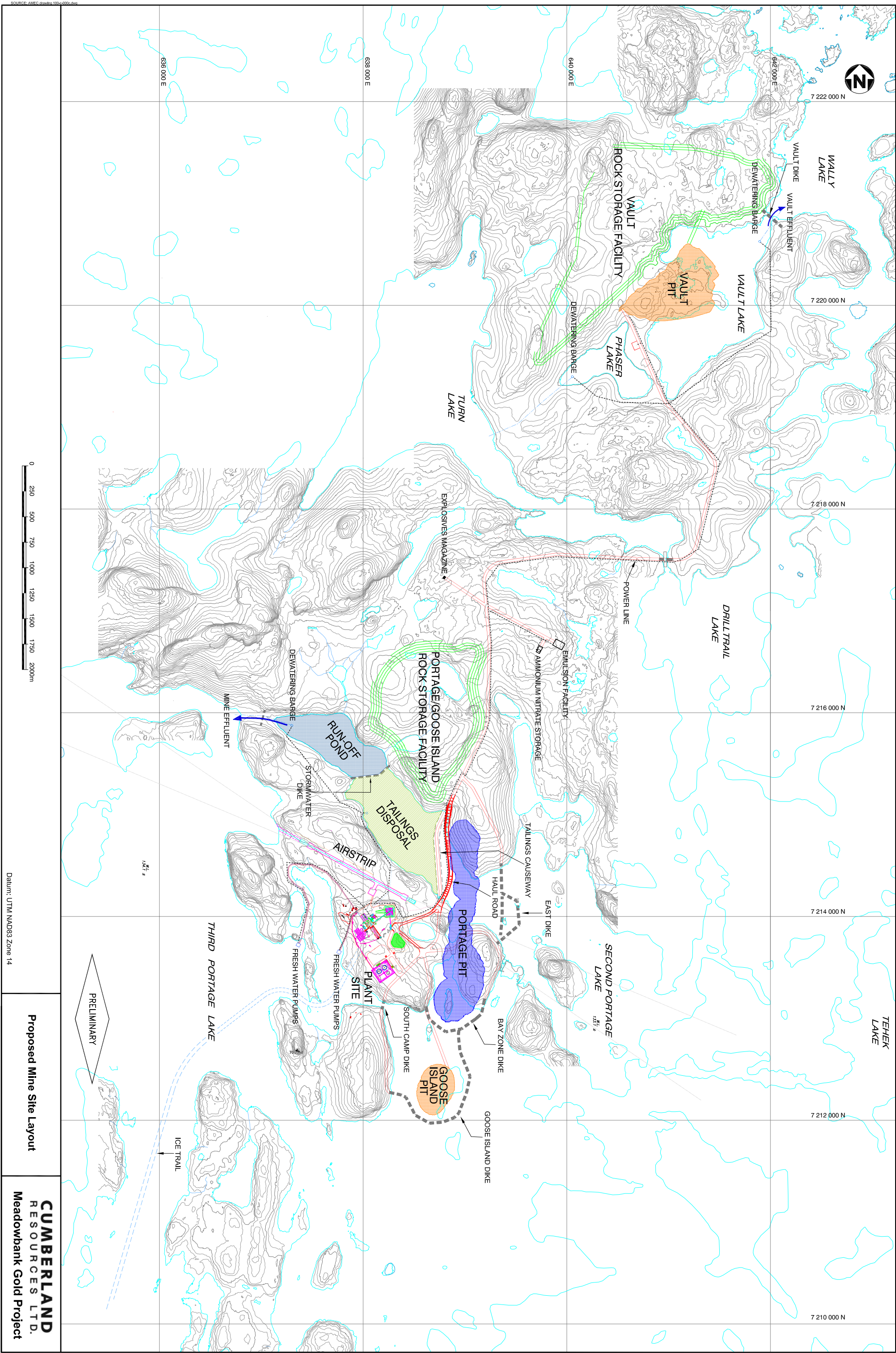
As shown on the following page, this report is part of the documentation series that has been produced during this six-stage EIA process.

EIA DOCUMENTATION ORGANIZATION CHART



PROJECT LOCATION MAP





SECTION 1 • INTRODUCTION

Two seasons of archaeological survey were conducted at the Meadowbank project site. The first survey was carried out from 21 July to 1 August 1999, and the second from 13 to 25 July 2003. The archaeological work focused on areas of proposed project development. This included the mine site and vicinity (Area A), the winter road route (Area B), and selected sites outside the development area (Area C). The project marshalling area east of the Hamlet of Baker Lake, where ammonium nitrate will be stored, was also briefly surveyed.

The purpose of the 1999 work was to carry out an initial inventory of archaeological sites within the project area and to assess the potential impact of the various project components on the archaeological resources. The 2003 work followed up on certain sites identified during the previous program and continued with the inventory. Sites considered threatened were examined to determine their significance. Where an impact is predicted, recommendations are made for mitigation.

Forty-two sites were recorded during the 1999 archaeological survey, consisting of 40 newly recorded and 2 revisited sites. In 2003, 42 previously unrecorded sites and 8 revisited sites were documented, for a total of 50. None of the sites was excavated in either year, and no artifacts were collected.

The sites were visited or observed by helicopter, foot, vehicle, and boat. At each site, features were identified, photographed, recorded on VHS video, and recorded in field notes. Typical information included dimensions, associated artifacts or faunal remains, site condition, impacts, and vulnerability. A hand-held Global Positioning System (GPS) unit was used to record geographic coordinates, which were plotted on maps.

Most of the sites encountered were temporary campsites that had been occupied relatively recently. The types of features identified included tent rings, autumn houses (*qarmait*), hearths, shelters, *inuksuit*, markers, blinds, caches, storage features, kayak stands, fox traps, and unidentified features.

The results of the 2003 work were presented to the Baker Lake Hamlet Council, board members of the Inuit Heritage Centre, and the Qilautimiut (Elders) Society on 6 and 7 November 2003. A summary of the report prepared on the 2003 survey work is provided in Inuktitut overleaf.

Study area maps and complete listings with regard to the sites identified are provided in **Appendices A and B** for the 2003 and 1999 surveys, respectively.

SECTION 2 • STUDY AREA

The archaeological surveys covered three main areas, designated A, B, and C. (1999). Area A includes the mine site and vicinity, Area B is the winter road from Baker Lake to the site, and Area C is outside the direct area of any project facilities. Area A was the primary focus of study in 1999. In 2003, special attention was given to the winter road route where it crossed onto land, as well as sites close to the route observed from the air in 1999. The work completed each year in each area is summarized below.

2.1 AREA A – MAIN FACILITIES

In 1999, the crew surveyed the areas of the camp, plant site, Goose Island and small islands to the north and south, North and Third Portage, airstrip, and all tailings and waste rock storage areas, including surface and subsurface disposal sites. Inuit from Baker Lake have traditionally camped at the Portage lakes system (*Apuqtinnaaqtuq*) to fish, hunt, trap fox, and cache meat. Grave sites and a place of spiritual significance were reported to be located in this area (Nunavut Environmental Ltd., 1999:6).

By 2003, the Meadowbank overall site plan, including infrastructure layout and potential tailings disposal sites, differed from that proposed in 1999. The crew surveyed the proposed Vault waste dump, Vault shell, emulsion plant and AN storage area, Portage/Goose Island waste dump area, Vault haul route from the main deposit to the Vault shell, and the new camp site.

Project marshalling sites located within municipal lands east of the Hamlet of Baker Lake, where ammonium nitrate will be stored, were briefly surveyed at the end of the 2003 fieldwork.

2.2 AREA B – WINTER ROAD

The 1999 survey was conducted on one side of the watershed along the then-proposed winter road route. This area has served as a travel corridor between the communities of Gjoa Haven and Baker Lake. According to Josiah Nuilalik (Nunavut Environmental Ltd., 1999:4) the area between Baker Lake and the Meadowbank property has most commonly been used as a route to the Back River area.

In addition to the general winter road route, sections along the “delta” route used by Peter’s Expediting Ltd. to transport supplies to the project camp were surveyed in 2003. It is important to note that areas along the delta route are also commonly used by area residents. The archaeology crew observed that tracks were sometimes visible along the delta route (in summer).

The main lakes located along the winter road route include Airplane, Qamanaugatuq, Qamanauga’naaq, Whitehills (*Tahiryuaq*), Hanningayukuluk, Amaruliarulhiq, Amaruk, and Third Portage.

2.3 AREA C – OUTSIDE THE MINE AREA

Only three archaeological sites were visited in area C, one in 1999 and two in 2003. The sites were at Inuhugajualik, west of the mine site, where graves had been reported. The name Inuhugajualik means “place where there is a big inuksuk.” No inuksuit were found in the 1999 survey, but two were found during the 2003 investigations.

The Chesterfield Narrows has been identified as a potential shipping route for the project, but no archaeological survey has been required to date because no land-based activities are contemplated in that area. In 1988, Max Friesen conducted a helicopter survey along part of the narrows for Beak Consultants Ltd. There are numerous unrecorded archaeological sites along the narrows.

SECTION 3 • METHODS OF INVESTIGATION

Prior to starting the 1999 fieldwork, discussions about the project were held with Counsellor David Webster on behalf of the Baker Lake Hamlet Council; Mr. Webster is also the manager/curator of the local museum. An archaeological permit was not issued for the work in 1999, but a letter of authorization was received from Leah Oak, the Director of Culture, Language, Elders and Youth of the Government of Nunavut, dated 14 July 1999. The survey program was conducted from 21 July to 1 August 1999.

Before starting the 2003 fieldwork, discussions were held with Joe Niego, Mayor of Baker Lake, and copies of the archaeology permit application were sent to the Government of Nunavut and the Inuit Heritage Trust Inc. Upon receipt of the permit from the Government of Nunavut, the fieldwork program was conducted from 13 to 25 July 2003.

During both 1999 and 2003, archaeological sites were visited or observed by helicopter, foot, vehicle, and boat. At each site, features were identified, photographed, recorded on VHS video, and recorded in field notes. Typical information included dimensions, associated artifacts or faunal remains, site condition, impacts, and vulnerability. A hand-held Global Positioning System (GPS) unit was used to record geographic coordinates, which were plotted on maps.

The results of the 2003 survey were presented to the Baker Lake Hamlet Council, board members of the Inuit Heritage Centre, and the Qilautimiut (Elders) Society on 6 and 7 November 2003.

SECTION 4 • SURVEY RESULTS

Before 1999, only two archaeological sites had been recorded in the entire study area. A total of 42 sites were recorded during the 1999 survey and 50 sites during the 2003 survey. Three sites reported by geologists (two in 1999, one in 2003) are also included in the site records, but no Reporter Number has been assigned to these sites because they were not visited or recorded by the archaeologist.

Whereas most sites were generally small, with one or two features of interest, more than 15 features were observed by helicopter survey at site B-1. The types of features encountered at the various sites included tent rings, semi-subterranean houses, autumn houses, hearths, shelters, inuksuit, markers, blinds, caches, storage features, kayak stands, fox traps, graves, campsites, kill-sites, and unidentified features. Each type of feature is briefly discussed below. Plates are included at the end of this section. Faunal remains associated with the sites are caribou. Detailed compilations of the data collected during the 2003 and 1999 surveys are presented in [Appendices A and B](#), respectively.

Definition of Artifacts – According to the Nunavut Archaeological and Palaeontological Sites Regulations, an archaeological site is a site where an archaeological artifact is found. An “...archaeological artifact means any tangible evidence of human activity that is more than 50 years old and in respect of which an unbroken chain of possession or regular pattern of usage cannot be demonstrated, and includes Denesuline archaeological specimen(s)...” All objects observed during the surveys, whether archaeological or not, were recorded.

Tent Rings (Tupirvik)

Tent rings ([Plate 4.1](#)) were by far the most common feature encountered during both the 1999 and 2003 surveys (e.g., 31 were found during the 2003 survey). The Nunavut Environmental Ltd. report on Preliminary Overview of Archaeological Resources and Traditional Uses (1999:6,7,8) states that camping was done during spring, summer, and winter in the mine site and vicinity, along the winter road route, and outside the mine area. The campsites ranged in size from a single tent ring to 10 tent rings. Circular, oval, and square-shaped tent rings were observed. Square tent rings with recent garbage usually mean that a prospector’s canvas tent had been erected and that the site is less than 50 years old. Five of the tent rings observed in 1999 and one in 2003 had mid-sections, or dividers, that separated areas of the tent for different activities. Vegetation growth on the majority of the rings was minimal.

Subterranean Houses

Houses constructed of heavy quartzite slabs were located at Site B-1 during the 1999 survey. Caribou bone and bullet-making material were also identified at this site.

Autumn Houses (Qarmait)

Qarmait (plural) are autumn houses built of rocks and roofed with skins supported by wooden poles. Two *qarmait* were found at sites B-6 and B-12 along the winter road route in 1999. The *qarmat* (singular) at B-6 was resurveyed during 2003 (Plate 4.2). Brian McGraw has reported another possible *qarmat* at site B-6.

Hearths (Iggarvik or Kikthu)

Hearths or fireplaces were located at sites A-5, A-7, B-1, and B-5 in 1999. In 2003, hearths or fireplaces were found at A-11 (Plate 4.3), B-3, B-6, B-12, B-29, B-36, B-37, B-44, B-46, B-48, B-50, and B-54. All were located outside of tent rings. Some were built next to boulders or inside shelter features for protection from the wind.

Shelters (Ukuutaq)

In 2003, shelters were located at sites B-3, B-28, B-36, B-44, B-45, B-48, B-49, B-57, and C-2.

Inuksuit

In 2003, one inuksuk or more (*inuksuit*) were recorded at sites B-32, B-47, B-55, C-2, and C-3. The height varied, the shortest being 84 cm high and the tallest 2.1 m high.

Markers (Nalunaikkutaq)

Markers are usually constructed of one or more stones placed so that they can easily be seen to identify a particular location. Often a rock is placed on top of a large boulder for this purpose. Markers were observed at sites A-5, C-1, B-3, B-9, B-17, and B-20 in 1999; and at B-3, B-28, B-32, B-42, B-48, and B-52 in 2003. Site B-3 had the most markers, at 11.

Nalunaikkutaq means “deconfuser” and are the most elementary kind of inuksuit (Hallendy 2000: 46) that are used to mark a place. These features are usually constructed of one or more stones placed

on a large boulder so that they can easily be seen. Nalunaikkutaq were observed at sites B-3, B-28, B-32, B-42, B-48 and B-52. Site B-3 had the most markers at 11.

Blind (Talujuat)

A possible blind was located at sites A-15 and at B-4 in 2003.

Caches (Niqiusivvik)

A cache is a place for concealing and preserving provisions or tools. Caribou meat is traditionally stored in caches in the fall. In 2003, caches were observed at sites B-4, B-28, B-29, B-32, B-34, B-40, B-44, B-45 and B-55. The caches had either been opened or were still closed.

Storage Features (Hirluaq)

Storage features were located at sites B-3 and B-52 in 2003.

Fox Traps

The only stone fox trap observed during the two surveys was at site B-4. The trap was a tower type, or *ublihaut*. Fox trapping is reported to take place in the mine site area (Nunavut Environmental Ltd., 1999:10). A leg-hold fox trap was seen at site B-35.

Graves

More than 16 grave sites (Plate 4.4) along the winter road route and at least three in the mine site area were reported previously by others (Crampton and Mannik, 1999). Six graves were recorded during the 1999 survey. Crosses were associated with five of the graves, and Nunavut Environmental Ltd. reported the names of some of the deceased. No white quartzite stones were found at either the north or south end of the graves, which would have indicated the sex of the individual buried there.

Kayak Stands (Qajauhivik)

Two kayak (*qajaq*) stands were recorded at site B-52 in 2003 (Plate 4.5).

Unidentified Features & Other Artifacts

In 1999, eight unidentified features were recorded at sites A-1, A-2, A-5, A-6, B-7, B-12, and B-17. Other historical objects observed at various sites included tin cans, net floats, a sled cross-slat, glass bottles, and a metal scraper blade (Plate 4.6). Lithic scatter (quartzite flakes) were located at site B-30.

In 2003, unidentified features were recorded at A-13, B-4, B-6, B-29, B-35, B-38, B-39, B-44, and B-52. In addition, various objects were observed at sites A-16, B-4, B-6, B-29, B-35, B-36, B-37, B-38, B-40, B-44, B-49, B-51, B-52, B-53, B-54, B-58, B-60, and B-61. Most or all of the objects appeared to be less than 50 years old.

Plate 4.1: Tent Rings at Site A-7



Plate 4.2: Qarmat at Site B-6



Plate 4.3: Hearth at Site A-11



Plate 4.4: Grave at Site A-4



Plate 4.5: Kayak Stand at Site B-52



Plate 4.6: Scraper at Site A-5



SECTION 5 • CONCLUSIONS

Most of the sites encountered in the study area are temporary campsites and were occupied recently, probably within the last 50 years. No Pre-Dorset or Dorset sites were encountered in the study area, and only one Thule or early historic site was visited.

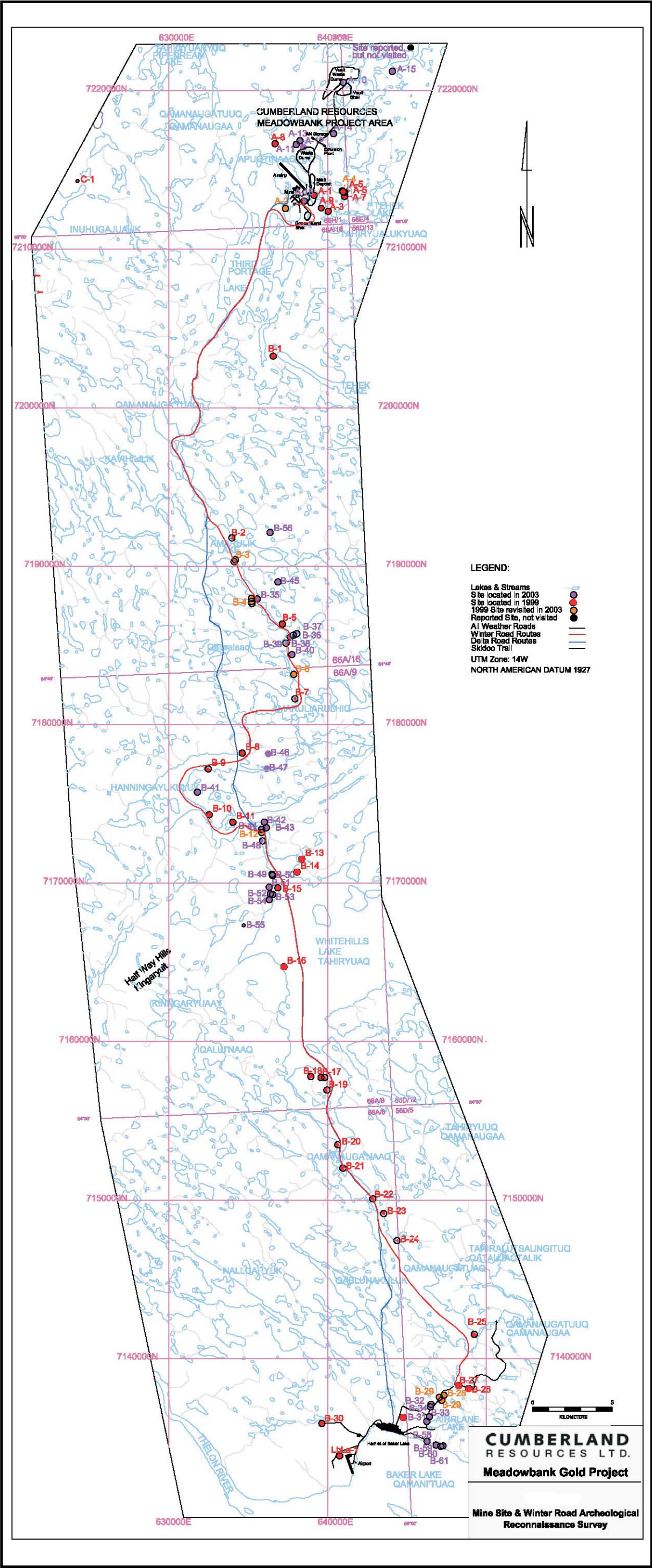
Overall, the project was successful in achieving its objectives. A total of 42 sites were reported in 1999 (40 newly recorded, 2 revisited) and 50 sites in 2003 (42 newly recorded, 8 revisited). The data from the surveys have been compiled and forwarded to the Archaeological Survey of Canada in Ottawa.

SECTION 6 • REFERENCES

- Bennett, John (ed), 1994. Report of the Ittarnisilirijit Conference on Inuit Archaeology, Igloolik, February 7-9, 1994. Unpublished report.
- Canadian Heritage Information Network website at chin.gc.ca.
- Friesen, T.M., 1989. Archaeological Investigations in the Vicinity of the Kiggavik Uranium Mine Project, District of Keewatin, Northwest Territories.
- Gordon, B.C., 1974. 1974 Thule Culture Investigations at Baker Lake, N.W.T. Canadian Archaeological Association Bulletin No. 6.
- Hallendy, Norman, 2000. Inuksuit: Silent Messengers of the Arctic.
- Harp, E., 1959. Ecological Continuity on the Barren Grounds, In: Polar Notes, Occasional Publication of The Stefansson Collection, Dartmouth College Library, Hanover, New Hampshire, Number 1.
- Harp, E., 1960. Archaeological Research in Arctic North America (1958-1960), In: Anthropologica New Series Vol. 2, No. 2.
- Harp, E., 1961. Archaeology of the Lower and Middle Thelon, Northwest Territories. AINA Technical Paper No. 8.
- Harp, E., 1962. The Culture History of the Central Barren Grounds. AINA Technical Paper No. 11.
- Indian and Northern Affairs Canada, 1993. Agreement between the Inuit of the Nunavut Settlement Area and Her Majesty the Queen in Right of Canada.
- Nunavut Environmental Ltd., 1999. Preliminary Overview of Archaeological Resources and Traditional Uses, Meadowbank Property, NT.
- Territorial Land Use Regulations.
- Webster, Deborah Kigjugalik, 1999. Meadowbank Archaeological Survey.

APPENDIX A

Study Area Maps & Site Records for 2003 Archaeological Survey



The Archaeological Survey of Canada Sites Office requires that the permit holder complete site entry forms for all newly discovered sites and all revisits to known sites. For more information on the fields used, please check the Canadian Heritage Information Network website at; chin.gc.ca and go to Artefacts Canada and click Archaeological Sites. Below is the required information.

AREA A: MINE SITE AND VICINITY

Reporter Number = A-2

Permit Number = 03-012A

Project Name = 2003 Meadowbank Archaeological Survey

Location = at the north end on top of a hill on the west side of a peninsula approximately $\frac{3}{4}$ kilometre southwest of the former Cumberland Resources exploration camp. This site is located in the mine site area. The site is 59 metres north of geodetic marker 709164.

Territory = Nunavut

District = Kivalliq

Map Reference = 66 H/1

UTM = 14N 637339E 7212570N

Condition = very good

Site Type Class = historic

Site Type = natural and ?

Features = n/a

Culture = non-Inuit

Researcher's Name = Webster, D.

Observer Date = July 16, 2003

Collections = none

Remarks = After revisiting this possible archaeological site, the archaeologist questions that the unidentified feature recorded in 1999 is archaeological. It appears to be natural. It should be noted that in the same site area there are stones, placed in the shape of a cross, that surround the geodetic marker 709164. An inuksuk also stands at this site and the camp manager had informed the archaeologist that this was built recently. Site previously recorded in 1999.

Recommendation = this site is in the proposed mine site area. Test excavation.

Photo = none taken in 2003

Reporter Number = A-4

Permit Number = 03-012A

Project Name = 2003 Meadowbank Archaeological Survey

Location = on the south side of a hill on a peninsula on north shore of Second Portage Lake. Three kilometres northeast of new Cumberland Resources exploration camp. It site is 87 metres west of site A-5. Outside of proposed project area.

Territory = Nunavut

District = Kivalliq

Map Reference = 66 H/1

UTM = 14N 640929E 7213678N

Condition = excellent

Site Type Class = indigenous historic

Site Type = burial

Features = grave

Culture = Inuit

Researcher's Name = Webster, D.

Observer Date = July 22, 2003

Collections = none

Remarks = not visited in 2003, but photographed from air.

Recommendation = Although this site is outside the proposed project area, it is only approximately three kilometres northeast of the new Cumberland Resources exploration camp. Given that this is a burial site, it is very highly recommended that this site be avoided. It is also recommended that Cumberland Resources Ltd. discuss the size of buffer zones with the Baker Lake Hamlet Council and a decision must be agreed upon about how to protect this grave and other graves in the mine site area and along the winter road route. Some options to consider include increasing the buffer size, erect a chain link fence around graves in the mine site area as it has been done at the DIAVIK Diamond mine, adopt a policy where employees are not allowed to leave the camp area, and lastly, have an employee education program on arctic archaeology.

Photo = 35 mm (air photo)

Reporter Number = A-10

Permit Number = 03-012A

Project Name = 2003 Meadowbank Archaeological Survey

Location = located within the proposed Vault Waste Dump.

Territory = Nunavut

District = Kivalliq

Map Reference = 66 H/1

UTM = 14N 640991E 7220536N

Condition = undisturbed

Site Type Class = indigenous historic or older?

Site Type = campsite

Features = tent ring

Culture = Inuit?

Researcher's Name = Webster, D.

Observer Date = July 15, 2003

Collections = none

Remarks = A single tent ring measures 3.1 metres north-south by 4.3 metres east-west. Lichenated rocks. Caribou bones, including a jaw bone and fragments, appear to be associated with this site. No artifacts were observed at the site. There is a light layer of topsoil. Previously unrecorded site.

Recommendation = This site is vulnerable because of its location. Test excavation. Check under tent ring rocks.

Photo = digital and video

Reporter Number = A-11

Permit Number = 03-012A

Project Name = 2003 Meadowbank Archaeological Survey

Location = 3.08 kilometres north of new Cumberland Resources exploration camp; north of Portage/Goose Island Waste Dump; north of Second Portage Lake; 49.4 metres south of a pond/lake.

Territory = Nunavut

District = Kivalliq

Map Reference = 66 H/1

UTM = 14N 638624E 7216607N

Condition = undisturbed

Site Type Class = undetermined

Site Type = undetermined

Features = hearth

Culture = undetermined

Researcher's Name = Webster, D.

Observer Date = July 16, 2003

Collections = none

Remarks = a small hearth measuring .5 metres by .5 metres. Blackberry bush growing inside. Lichen growth on bottom of the rocks. No associated bones or artifacts. Undisturbed. Previously unrecorded site.

Recommendation = Vulnerable because of its location. Avoidance.

Photo = digital, 35 mm and video

Reporter Number = A-12

Permit Number = 03-012A

Project Name = 2003 Meadowbank Archaeological Survey

Location = southeast of site A-11 on the north side of Portage/Goose Island Waste Dump; north of Second Portage Lake; 2.5 kilometres north-north-east of new Cumberland Resources exploration camp.

Territory = Nunavut

District = Kivalliq

Map Reference = 66 H/1

UTM = 14N 638461E 7216442N

Condition = undisturbed

Site Type Class = undetermined

Site Type = campsite

Features = tent ring

Culture = undetermined

Researcher's Name = Webster, D.

Observer Date = July 16, 2003

Collections = none

Remarks = tent ring with divider. Lichen growth inside and on tent ring rocks. No associated bones or artifacts. Previously unrecorded site.

Recommendation = Vulnerable because of its location. Test excavation. Check under tent ring rocks.

Photo = digital, 35 mm and video

Reporter Number = A-13

Permit Number = 03-012A

Project Name = 2003 Meadowbank Archaeological Survey

Location = north of Portage/Goose Island Waste Dump on Vault Haul Route; approximately three kilometres north of the new Cumberland Resources exploration camp.

Territory = Nunavut

District = Kivalliq

Map Reference = 66H/1

UTM = 14N 638265E 7216844N

Condition = undisturbed

Site Type Class = historic or indigenous historic??

Site Type = campsite

Features = unidentified feature, tent ring

Culture = Inuit?

Researcher's Name = Webster, D.

Observer Date = July 17, 2003

Collections = none

Remarks = Observed on July 16 from air and visited on July 17. The unidentified feature is 2.6 metres by 2.6 metres. It lies on top of bedrock. There were no associated bones or artifacts observed. 23.8 metres west is a tent ring. It measures 2.8 metres east-west by 3.1 metres north-south. Previously unrecorded site.

Recommendation = Vulnerable because of its location. Test excavation. Check under tent ring rocks.

Photo = digital, 35 mm and video

Reporter Number = A-14

Permit Number = 03-012A

Project Name = 2003 Meadowbank Archaeological Survey

Location = on the south side of Tern Lake and the east side of the Vault Haul Route.

Territory = Nunavut

District = Kivalliq

Map Reference = 66H/1

UTM = 14N 640378E 7217291N

Condition = good

Site Type Class = archaeological?

Site Type = campsite

Features = tent rings

Culture = undetermined

Researcher's Name = Webster, D.

Observer Date = July 17, 2003

Collections = none

Remarks = tent ring situated on bedrock. It is on a slope. No divider. Lichen growth between tent ring rocks. No associated bones or artifacts observed. 8.4 metres west is another tent ring measuring 3.64 metres north-south by 3.54 metres east-west. Previously unrecorded site.

Recommendation = Vulnerable because of its location. Check under tent ring rocks.

Photo = digital, 35 mm and video

Reporter Number = A-15

Permit Number = 03-012A

Project Name = 2003 Meadowbank Archaeological Survey

Location = approximately 3.2 kilometres east-north-east of site A-10 at the proposed Vault Waste Dump and 9.6 kilometres northeast of the new Cumberland Resources exploration camp.

Territory = Nunavut

District = Kivalliq

Map Reference = 56E/4

UTM = 15N 362121E 7220932N

Condition = undetermined

Site Type Class = undetermined

Site Type = undetermined

Features = undetermined

Culture = undetermined

Researcher's Name = Webster, D.

Observer Date = July 22, 2003

Collections = none

Remarks = Tom Mannik informed the archaeologist about this site. Tin cans at site. Site observed from air. Previously unrecorded site.

Recommendation = An accurate GPS reading of site location is required. Visit site and record.

Photo = 35 mm

Reporter Number = A-16

Permit Number = 03-012A

Project Name = 2003 Meadowbank Archaeological Survey

Location = Third Portage Lake southeast of new Cumberland Resources exploration camp.

Territory = Nunavut

District = Kivalliq

Map Reference = 66H/1

UTM = 14N 638525E 7213049N

Condition =

Site Type Class = historic?

Site Type = undetermined

Features = tent ring?

Culture = undetermined

Researcher's Name = Webster, D.

Observer Date = July 22, 2003

Collections = none

Remarks = A questionable tent ring. No lichen growth. Recent. Previously unrecorded site.

Recommendation = Vulnerable because of its location. A GPS reading for site location is required.

Photo = video

AREA B: WINTER ROAD ROUTES

Reporter Number = B-3

Permit Number = 03-012A

Project Name = 2003 Meadowbank Archaeological Survey

Location = on top of the middle hill on the east side of Amarulik Lake. This site extends approximately 800 metres.

Territory = Nunavut

District = Kivalliq

Map Reference = 66A/16

UTM = 14N 634573E 7190635N

Condition = good, not endangered

Site Type Class = undetermined

Site Type = campsite

Features = storage feature, markers, shelter?, hearth, caches

Culture = Inuit

Researcher's Name = Webster, D.

Observer Date = July 18, 2003

Collections = none

Remarks = Site observed and mapped from helicopter in 1999. There is an opened storage feature? with moss growing inside. There is a marker (single upright white stone) on the northeast side of the hill. It lies 39.3 metres northeast of the storage feature on a slope. A hearth is at the northeast end of a slope. These sites are not endangered because they are on top of a relatively high hill. Closer to the narrows, on the first hill, there are at least 11 markers (rock on top of another rock) plus some single upright rocks. There is a possible shelter with a hearth inside. No visible bones or artifacts.

Recommendation = Avoidance.

Photo = digital, 35mm and video

Reporter Number = B-4

Permit Number = 03-012A

Project Name = 2003 Meadowbank Archaeological Survey

Location = on the south side of a small lake on the southeast end of Amarulik Lake.

Territory = Nunavut

District = Kivalliq

Map Reference = 66A/16

UTM = 14N 635188E 7187962N

Condition = good

Site Type Class = indigenous historic or older

Site Type = killsite

Features = inuksuk, cache, blind?, tower fox trap, two unidentified features

Culture = Inuit

Researcher's Name = Webster, D.

Observer Date = July 16, 2003

Collections = none

Remarks = Site observed and mapped from helicopter in 1999. Inuksuk measuring 2 metres tall, 1.3 metres north-south by 1.3 metres east-west and 4.25 circumference. 7.1 metres north is a cache. 10.9 metres south is a rusted lid (tobacco?). The cache is 3.3 metres north-south, 3.2 metres east-west. Opened. No associated bones. 27 metres northeast of the cache is a blind. There is a tower trap fox trap and at least two more features to the southeast.

Recommendation = Avoidance.

Photo = digital and video. Mistakenly reported as C-4 in the photos (it is B-4)

Reporter Number = B-6

Permit Number = 03-012A

Project Name = 2003 Meadowbank Archaeological Survey

Location = on portage between Amarulik and Amaruliaruhiq Lakes. North of Amaruliarulik hill. 240 metres west of the winter road route.

Territory = Nunavut

District = Kivalliq

Map Reference = 66A/9

UTM = 14N 637872E 7183174N

Condition = very good, undisturbed

Site Type Class = indigenous historic

Site Type = campsite

Features = unidentified feature, hearths, tent rings, autumn house or *qarmat*

Culture = Inuit

Researcher's Name = Webster, D.

Observer Date = July 19, 2003

Collections = none

Remarks = Site observed and mapped from helicopter in 1999. The site extends 69 metres east-west. Starting on the west side, feature B-6a is an unidentified feature measuring 3.33 metres north-south by 1.02 metres east-west. There is a set of two hearths, three tent rings, a *qarmat* and a tent ring. The *qarmat* was measured and is 2.5 metres north-south by 3.25 metres east-west. The artifacts found at the site include; metal Anacin box, a "From Coast to Coast" lid, scissors, eight .250 bullet shells and one 25-35 shell, some caribou bones, wood fragment and worked wood.

Recommendation = Check under tent ring rocks. Avoidance.

Photo = digital, 35 mm and video

Reporter Number = B-12

Permit Number = 03-012A

Project Name = 2003 Meadowbank Archaeological Survey

Location = Whitehills Lake. South of B-44 on the south side of the ravine. A pond lies to the northwest.

Territory = Nunavut

District = Kivalliq

Map Reference = 66A/9

UTM = 14N 635846E 7173202N

Condition = good, undisturbed

Site Type Class = indigenous historic

Site Type = campsite

Features = tent rings, possible shelter, hearth

Culture = Inuit

Researcher's Name = Webster, D.

Observer Date = July 20 and 21, 2003

Collections = none

Remarks = Observed and mapped from helicopter in 1999. Two tent rings side by side, hearth, possible shelter with wood pieces and rusted metal file, tent ring. The shelter is 86.5 metres from the shore. The site was revisited on July 21 and the following items were observed at the site; rusted lard tin? with no lid associated, worked wood fragments and pieces, caribou bone, rubber boot, metal pieces, material, and a white plastic sled runner.

Recommendation = Vulnerable because it is located approximately 30 metres south of the winter road route and the Delta route. Check under tent ring rocks. Avoidance.

Photo = 35 mm and video

Reporter Number = B-28

Permit Number = 03-012A

Project Name = 2003 Meadowbank Archaeological Survey

Location = on top of hill north of Airplane Lake. 29 metres east of the all-weather road.

Territory = Nunavut

District = Kivalliq

Map Reference = 56 D/5

UTM = 14N 647335E 7137684N (15WUB 357452E 7137458N)

Condition =

Site Type Class = indigenous historic

Site Type = campsite

Features = tent ring, markers, caches, shelter, hearths, storage features

Culture = Inuit

Researcher's Name = Webster, D.

Observer Date = July 13 and 14, 2003

Collections = none

Remarks = Site observed and mapped from helicopter in 1999. A square-shaped tent ring (prospector's tent) lying on lichenated rocky area. Probably recent. No associated bones or artifacts. There are small markers nearby. More than four caches are located east of this site over 100 metres east of all-weather road. Minimal scattered bones. These caches appear to be older than the tent ring. Further east toward the long pond are more features including a shelter with two hearths and a few possible storage areas.

Recommendation = Vulnerable. Check under tent ring rocks. Avoidance.

Photo = digital, 35 mm and video

Reporter Number = B-29

Permit Number = 03-012A

Project Name = 2003 Meadowbank Archaeological Survey

Location = on both sides of the all-weather road on top of a hill north of Airplane Lake. East of a large pond. There are two cabins in the vicinity.

Territory = Nunavut

District = Kivalliq

Map Reference = 56 D/5

UTM = 14N 647047E 7137481N (15WUB 357146E 7137283N)

Condition = undetermined

Site Type Class = historic or indigenous historic?

Site Type = campsite

Features = tent rings, cache, hearth, unidentified feature

Culture =

Researcher's Name = Webster, D.

Observer Date = July 13 and 14, 2003

Collections = none

Remarks = Site observed and mapped from helicopter in 1999. There are two tent rings and a cache on the west side of the road. The tent ring is 15 metres from the all-weather road, not the side road. These two rings are lying on uneven ground. Wood pieces and a caribou jaw are associated with the rings. These tent rings are recent. A cache lies 93 metres from the road. It is small, opened and no bones are associated with it. There is vegetation growth inside. The distance from the road to the tent rings on the east side of the all-weather road is 67 metres. There are four rings and a hearth here. The crew dropped into John Killulark's cabin and we asked him about the site nearby. He said that white men used to camp around this area and Maniktuq (an area north of Baker Lake).

Recommendation = Check under tent ring rocks. Avoidance.

Photo = digital and video

Reporter Number = B-31

Permit Number = 03-012A

Project Name = 2003 Meadowbank Archaeological Survey

Location = 5.9 metres east of the all-weather road on the west side of Airplane Lake.

Territory = Nunavut

District = Kivalliq

Map Reference = 56 D/5

UTM = 14N 646267E 7136039N (15WUB 356234E 7135921N)

Condition =

Site Type Class = historic or indigenous historic?

Site Type = campsite

Features = tent ring

Culture = Inuit?

Researcher's Name = Webster, D.

Observer Date = July 13 and 14, 2003

Collections = none

Remarks = single square-shaped tent ring measuring 2.9 metres north-south by 2.5 metres east-west. No lichen growth. Recent- non-archaeological.

Previously unrecorded site.

Recommendation = Vulnerable. Check under tent ring rocks. Avoidance.

Photo = digital, 35 mm and video

Reporter Number = B-32

Permit Number = 03-012A

Project Name = 2003 Meadowbank Archaeological Survey

Location = north of Airplane Lake, 13 metres west of all-weather road.

Territory = Nunavut

District = Kivalliq

Map Reference = 56 D/5

UTM = 14N 646527E 7137114N (15WUB 356594E 7136967N)

Condition = disturbed

Site Type Class = indigenous historic? or archaeological

Site Type = campsite

Features = cache, tent rings, inuksuk, markers

Culture = Inuit

Researcher's Name = Webster, D.

Observer Date = July 13 and 14, 2003

Collections = none

Remarks = an opened cache measuring 2.4 m north-south by 1.92 m east west lies 13 m west of the all-weather road. There are no visible bones. The cache is lichenated and there are blackberry bush growing inside it. The cache is marked by a small inuksuk. 100 metres northeast of the cache are 2 tent rings. The tent rings are side-by-side and share the north-south wall. The tent ring to the south measures 3.6 metres north-south by 3.7 metres east-west and the tent ring to the north measures 3.1 metres north-south by 3.3 metres east-west. ATV tracks run through the southern ring. Nearby recently erected markers show the ATV trail. Previously unrecorded site.

Recommendation = Vulnerable. Check under tent ring rocks. Avoidance.

Photo = digital and video

Reporter Number = B-33

Permit Number = 03-012A

Project Name = 2003 Meadowbank Archaeological Survey

Location = on top of hill south of the all-weather road. A cabin is nearby.

Territory = Nunavut

District = Kivalliq

Map Reference = 56 D/5

UTM = 14N 646420E 7136330N (15WUB 356413E 7136197N)

Condition =

Site Type Class = historic or indigenous historic?

Site Type = campsite

Features = tent ring

Culture = Inuit

Researcher's Name = Webster, D.

Observer Date = July 13 and 14, 2003

Collections = none

Remarks = single square tent ring. Cigarette butts in and around feature. Previously unrecorded site.

Recommendation = No mitigation recommended.

Photo = video

Reporter Number = B-34

Permit Number = 03-012A

Project Name = 2003 Meadowbank Archaeological Survey

Location = 2.3 metres east of turn-off on all-weather road and 18.9 metres east of the road.

Territory = Nunavut

District = Kivalliq

Map Reference = 56 D/5

UTM = 14N 646491E 7136954N (15WUB 356543E 7136811N)

Condition =

Site Type Class = indigenous historic

Site Type = killsite

Features = cache

Culture = Inuit

Researcher's Name = Webster, D.

Observer Date = July 14, 2003

Collections = none

Remarks = small opened cache. Orange lichen growth on yearling caribou vertebrae with antler.
Previously unrecorded site.

Recommendation = Vulnerable. Avoidance.

Photo = digital and video

Reporter Number = B-35

Permit Number = 03-012A

Project Name = 2003 Meadowbank Archaeological Survey

Location = on the east side of Amarulik Lake near the shore across from site B-4.

Territory = Nunavut

District = Kivalliq

Map Reference = 66A/16

UTM = 14N 635559E 7187929N

Condition =

Site Type Class = indigenous historic

Site Type = undetermined

Features = unidentified feature

Culture = Inuit

Researcher's Name = Webster, D.

Observer Date = July 18, 2003

Collections = none

Remarks = mistakenly photographed as B-31. Unidentified feature. 3.7 metres southwest is a leg hold fox trap. Objects observed at the site include; white basin, buttons and material (possible canvas), brown glass bottle, 2 more metal leg hold fox trap, a pair of broken sunglasses, wooden handle (possibly a snow beater or *tiluktuut*), wooden sled cross slat with drilled holes, .22 long rifle bullets. Vulnerable because of proximity to winter road route. Previously unrecorded site. Any other features?

Recommendation = archaeologist work with the traditional knowledge specialist to try to determine who occupied the site and when. Avoidance.

Photo = video recorded

Reporter Number = B-36

Permit Number = 03-012A

Project Name = 2003 Meadowbank Archaeological Survey

Location = on the east side of Amarulik Lake. East of site B-38.

Territory = Nunavut

District = Kivalliq

Map Reference = 66A/16

UTM = 14N 638062E 7185740N

Condition =

Site Type Class = indigenous historic?

Site Type = campsite

Features = shelter, tent rings, hearths

Culture = Inuit?

Researcher's Name = Webster, D.

Observer Date = July 19, 2003

Collections = none

Remarks = 1.83 metres north-south by 2.4 metres east-west is a shelter-like feature with a hearth inside built of slabs of stone. There is arctic willow growing on the south side. There are some wood and bone fragments next to the shelter on the north side. There is a cut metal tin fragment on the east side of shelter. 6.7 metres north of the shelter-like feature is a tent ring measuring 3.72 metres north-south by 3.12 metres east-west. There are some wood fragments and bone inside. A worked wood fragment lies to the west. There is black moss growing inside the tent ring. The tent ring is 50 metres east of river. A second tent ring is 32.5 metres southeast of the shelter. It measures 2.38 metres north-south by 2.33 metres east-west. It is light. A rusted tobacco can (yellow Vogue?) and metal scrap lie to the west of the tent ring. A small hearth is 10.7 metres southwest of the tent ring. There is blackberry bush growth inside. Previously unrecorded site.

Recommendation = Check under tent ring rocks. Avoidance.

Photo = digital, 35mm and video

Reporter Number = B-37

Permit Number = 03-012A

Project Name = 2003 Meadowbank Archaeological Survey

Location = east side of rapids, west of first site we recorded today, 30 metres north of the tent ring is Amarulik Lake.

Territory = Nunavut

District = Kivalliq

Map Reference = 66A/16

UTM = 14N 637800E 7185702N

Condition =

Site Type Class = undetermined

Site Type = campsite?

Features = tent ring, hearth

Culture = undetermined

Researcher's Name = Webster, D.

Observer Date = July 19, 2003

Collections = none

Remarks = single round tent ring with rocks in centre. There are wood fragments with a nail and bone fragments. This site is probably not as old as the first site we saw today. The ring is 3.62 metres north-south by 3.95 metres east-west. 2.9 metres northwest is a hearth. Previously unrecorded site.

Recommendation = Check under tent ring rocks. Avoidance.

Photo = digital, 35mm and video

Reporter Number = B-38

Permit Number = 03-012A

Project Name = 2003 Meadowbank Archaeological Survey

Location = on the east side of Amarulik Lake 8.2 metres west of the shore.

Territory = Nunavut

District = Kivalliq

Map Reference = 66A/16

UTM = 14N 637652E 7185541N

Condition =

Site Type Class = undetermined

Site Type = undetermined

Features = unidentified feature

Culture = undetermined

Researcher's Name = Webster, D.

Observer Date = July 19, 2003

Collections = none

Remarks = 1.38 metres north-south by 0.82 metres east-west. Collapsed? Wood and wire fragments. Labrador tea growing on south side. Lichenated. Previously unrecorded site.

Recommendation = Avoidance.

Photo = digital, 35mm and video

Reporter Number = B-39

Permit Number = 03-012A

Project Name = 2003 Meadowbank Archaeological Survey

Location = east side of rapids on a lake between Amarulik and Amaruliarhiq Lake. On a rocky outcrop approximately 200+ metres west of the winter road route.

Territory = Nunavut

District = Kivalliq

Map Reference = 66A/16

UTM = 14N 637374E 7185150N

Condition =

Site Type Class = undetermined

Site Type = undetermined

Features = unidentified features

Culture = undetermined

Researcher's Name = Webster, D.

Observer Date = July 19, 2003

Collections = none

Remarks = 2.65 metres north-south by 3.2 metres east-west. 43.7 metres away is another feature. 8.8 metres east is yet another unidentified feature. Previously unrecorded site.

Recommendation = Avoidance.

Photo = digital, 35 mm and video

Reporter Number = B-40

Permit Number = 03-012A

Project Name = 2003 Meadowbank Archaeological Survey

Location = 18 miles south of base camp on the east side of the lake between Amarulik and Amaruliarhiq. On a rocky outcrop approximately 100 metres east of the winter road route.

Territory = Nunavut

District = Kivalliq

Map Reference = 66A/16

UTM = 14N 637752E 7184423N

Condition =

Site Type Class = indigenous historic?

Site Type = campsite/ killsite

Features = tent ring, caches

Culture = Inuit?

Researcher's Name = Webster, D.

Observer Date = July 19, 2003

Collections = none

Remarks = tent ring (probably recent) and three caches. Caribou bones and skull visible. Two .303 savage bullet shells. Note a wooden handle was seen approximately 450 metres east of this site in the meadow close to shore. Previously unrecorded site.

Recommendation = Not vulnerable. Avoidance.

Photo = digital, 35mm and video

Reporter Number = B-41

Permit Number = 03-012A

Project Name = 2003 Meadowbank Archaeological Survey

Location = near the centre of Hanningayukuluk Lake near the top of a hill. Andy Andy's cabin is located approximately one or more kilometres south of the site. It is approximately 900 metres east of the winter road route.

Territory = Nunavut

District = Kivalliq

Map Reference = 66A/9

UTM = 14N 631790E 7175750N

Condition = undetermined

Site Type Class = undetermined

Site Type = campsite

Features = tent ring

Culture = undetermined

Researcher's Name = Webster, D.

Observer Date = July 20, 2003

Collections = none

Remarks = single tent ring observed from the air. Appears to be recent. Not photographed. Previously unrecorded site.

Recommendation = Record.

Photo = not photographed

Reporter Number = B-42

Permit Number = 03-012A

Project Name = 2003 Meadowbank Archaeological Survey

Location = northeast of rapids at Quliqthinuaq Lake. It is approximately 600 metres northeast of the winter road route.

Territory = Nunavut

District = Kivalliq

Map Reference = 66A/9

UTM = 14N 636005E 7173855N

Condition = very good

Site Type Class = indigenous historic?

Site Type =

Features = marker

Culture = Inuit?

Researcher's Name = Webster, D.

Observer Date = July 20, 2003

Collections = none

Remarks = 2 upright rocks on a larger rock. There are some more rocks at the base of the larger rock on the west side. No artifacts observed. Orange lichen growth. Previously unrecorded site.

Recommendation = Not vulnerable because of distance from the winter road route. Avoidance.

Photo = digital, 35 mm and video

Reporter Number = B-43

Permit Number = 03-012A

Project Name = 2003 Meadowbank Archaeological Survey

Location = At the northernmost part of Whitehills Lake at the east side of the rapids. 12.7 metres north? of northern end of rapids at Quliqtinuaq Lake between sites B-42 and B-12. It is approximately 300 metres east of the winter road route.

District = Kivalliq

Map Reference = 66A/9

UTM = 14N 636135E 7173502N

Condition =

Site Type Class = undetermined

Site Type = campsite

Features = tent ring

Culture = undetermined

Researcher's Name = Webster, D.

Observer Date = July 20, 2003

Collections = none

Remarks = single, light, tent ring. Moss covering tent ring rocks. Previously unrecorded site.

Recommendation = Vulnerable because of its location. If this site is visited, an accurate GPS reading is required.

Photo = digital, 35 mm and video

Reporter Number = B-44

Permit Number = 03-012A

Project Name = 2003 Meadowbank Archaeological Survey

Location = at the northernmost part of Whitehills Lake at the west side of the rapids. North of site B-12.

Territory = Nunavut

District = Kivalliq

Map Reference = 66A/9

UTM = 14N 14635894E 7173399N

Condition = good condition

Site Type Class = indigenous historic?

Site Type = campsite

Features = tent rings, unidentified feature, hearths, caches

Culture = Inuit?

Researcher's Name = Webster, D.

Observer Date = July 20, 2003

Collections = none

Remarks = A tent ring well covered in vegetation growth. A hearth. A tent ring with caribou skull in it located near the rapids. Five unidentified features. Small worked wood with a nail (this may be too small to be the wooden picket observed in 1999). Rusted cans. A possible unopened cache. Two tent rings. A hearth on the winter road route. A tent ring. A prospector's tent ring. Pieces of rubber boot. A hearth. Another tent ring. It appears that this site may have been used at least two different times. Mistakenly reported on photoboard as site B-12. Previously unrecorded site.

Recommendation = Very vulnerable because it is located directly on both the winter road route and the Delta route. This is perhaps the most vulnerable site on the winter road route. Confirm that the feature is a cache and not a grave.

Photo = digital, 35 mm and video

Reporter Number = B-45

Permit Number = 03-012A

Project Name = 2003 Meadowbank Archaeological Survey

Location = south side of Amarulik Lake. Northeast of site B-4. Approximately 1.5 kilometres east of the winter road route.

Territory = Nunavut

District = Kivalliq

Map Reference = 66A/16

UTM = 14N 636868E 7189003N

Condition = undetermined

Site Type Class = indigenous historic?

Site Type = killsite

Features = shelter, cache

Culture = Inuit?

Researcher's Name = Webster, D.

Observer Date = July 21, 2003

Collections = none

Remarks = shelter built of about 9 rocks. Possible cache on south side of shelter. Observed from air. Previously unrecorded site.

Recommendation = Not vulnerable because of distance from winter road route. No mitigation required.

Photo = not photographed.

Reporter Number = B-46

Permit Number = 03-012A

Project Name = 2003 Meadowbank Archaeological Survey

Location = on the northeast side of Hanningayukuluk Lake. Approximately one kilometre north of site B-47 and one kilometre or more east of the winter road route.

Territory = Nunavut

District = Kivalliq

Map Reference = 66A/9

UTM = 14N 636255E 7178173N

Condition = undetermined

Site Type Class = undetermined

Site Type = campsite

Features = tent ring, hearth

Culture = undetermined

Researcher's Name = Webster, D.

Observer Date = July 21, 2003

Collections = none

Remarks = tent ring? and a hearth. Observed from air. Previously unrecorded site.

Recommendation = Record site.

Photo = 35 mm

Reporter Number = B-47

Permit Number = 03-012A

Project Name = 2003 Meadowbank Archaeological Survey

Location = east side of Hanningayukuluk Lake, north side of narrows. Approximately 1.5 kilometres east of the winter road route.

Territory = Nunavut

District = Kivalliq

Map Reference = 66A/9

UTM = 14N 636153E 7177222N

Condition = undetermined

Site Type Class = undetermined

Site Type = undetermined

Features = inuksuit

Culture = undetermined

Researcher's Name = Webster, D.

Observer Date = July 21, 2003

Collections = none

Remarks = Approximately six inuksuit collapsed. Approximately four inuksuit can be described as inuksualuk, a large inuksuk made of thin flat stones stacked upon one another. The tallest of this type is most likely a directional marker. There is also one usukjuaq. According to Hallendy (2000: 117), this is an ancient and universal symbol of fertility that indicates a rich spawning area and the direction in which to find it. Note that the usukjuaq and the large inuksualik appear to be aligned in the same direction. Because this site is located in a narrow area, the inuksuit might indicate a good fishing area. Observed from air only. Previously unrecorded site.

Recommendation = Not vulnerable. Record site.

Photo = digital and 35mm

Reporter Number = B-48

Permit Number = 03-012A

Project Name = 2003 Meadowbank Archaeological Survey

Location = northern end of Whitehills Lake. Approximately 200 metres west of winter road and Delta routes.

Territory = Nunavut

District = Kivalliq

Map Reference = 66A/9

UTM = 14N 635901E 7172662N

Condition = approximately 6 arctic ground squirrels live around this site

Site Type Class = indigenous historic?

Site Type = campsite

Features = shelter, tent rings, markers

Culture = Inuit?

Researcher's Name = Webster, D.

Observer Date = July 21, 2003

Collections = none

Remarks = shelter built of large rocks. A hearth is on the east side of the shelter. No associated artifacts observed. 5 or 6 metres north of the shelter is a tent ring. There is vegetation growth on rocks. The tent ring is 1.7 metres north-south by 1.46 metres east-west. There is no divider. A smaller tent ring lies 1.3 metres west of the first tent ring. There is one caribou bone fragment. There are two upright markers on the east side of rings. Previously unrecorded site.

Recommendation = An accurate GPS reading of site location is required. Photograph site.

Photo = not photographed

Reporter Number = B-49

Permit Number = 03-012A

Project Name = 2003 Meadowbank Archaeological Survey

Location = north side of Whitehills Lake. Ten metres west of shore.

Territory = Nunavut

District = Kivalliq

Map Reference = 66A/9

UTM = 14N 636497E 7170574N

Condition =

Site Type Class = undetermined

Site Type =

Features = hearth

Culture = undetermined

Researcher's Name = Webster, D.

Observer Date = July 21, 2003

Collections = none

Remarks = 3 rocks. C-shaped hearth measuring .48 metres north-south by .61 metres east-west. No visible bones. There is plant growth covering the hearth. Close to winter road route. Previously unrecorded site.

Recommendation = An accurate GPS reading of site location is required. Photograph site.

Photo = not photographed

Reporter Number = B-50

Permit Number = 03-012A

Project Name = 2003 Meadowbank Archaeological Survey

Location = northwest side of Whitehills Lake. Approximately 200 metres west of winter road and Delta routes.

Territory = Nunavut

District = Kivalliq

Map Reference = 66A/9

UTM = 14N 636527E 7170483N

Condition = disturbed. Three rocks on the south end of the tent ring have been moved out of place.

Site Type Class = indigenous historic?

Site Type = campsite

Features = tent ring, shelter

Culture = Inuit?

Researcher's Name = Webster, D.

Observer Date = July 21, 2003

Collections = none

Remarks = a tent ring lies 50-75 metres west of B-48. There are wood and bone fragments, a wooden handle. A C-shaped shelter approximately 8 metres south of the ring. It is made of 6 large rocks and faces west. No rocks on the east side. There is some material inside the shelter (knitted wool?). Previously unrecorded site.

Recommendation = An accurate GPS reading of site location is required. Photograph site. Avoidance.

Photo = not photographed

Reporter Number = B-51

Permit Number = 03-012A

Project Name = 2003 Meadowbank Archaeological Survey

Location = north side of Whitehills Lake, approximately 930 metres west of the winter road and Delta routes.

Territory = Nunavut

District = Kivalliq

Map Reference = 66A/9

UTM = 14N 636319E 7169747N

Condition = good- not disturbed.

Site Type Class = undetermined

Site Type = campsite

Features = tent ring

Culture = undetermined

Researcher's Name = Webster, D.

Observer Date = July 21, 2003

Collections = none

Remarks = tent ring measuring 3.47 metres north-south by 3.21 metres east-west. No divider.
Material located southeast of ring. Previously unrecorded site.

Recommendation = Not vulnerable.

Photo = digital, 35mm and video

Reporter Number = B-52

Permit Number = 03-012A

Project Name = 2003 Meadowbank Archaeological Survey

Location = on the northern end of Whitehills Lake. North side of a hill where a white vein or band of quartzite rock (confirm) is located. Near B-15. It is approximately one kilometre west of the winter road and Delta routes.

Territory = Nunavut

District = Kivalliq

Map Reference = 66A/9

UTM = 14N 636391E 7169322N

Condition = good

Site Type Class = indigenous historic or older

Site Type = campsite

Features = markers, kayak stands, tent ring, storage feature, unidentified feature

Culture = Inuit

Researcher's Name = Webster, D.

Observer Date = July 21, 2003

Collections = none

Remarks = starting on the north end of the site, a marker stands 63 centimetres high. The next feature is a kayak stand 3.93 metres long north-south. It is 2 sets of 2 upright V-shaped rocks. The kayak was possible stored here because there are rocks surrounding it. Another kayak stand measures 4.3 metres long. The next feature is a tent ring that is 3 metres north-south by 3.1 metres east-west. An unidentified feature is 1.84 metres north-south by 1.6 metres east-west. There is a tent ring 3.9 metres north-south by 4.48 metres east-west. A storage feature on the south end of the ring next to it is 1.1 metres north-south by 1.8 metres east-west. An unidentified feature is 2.2 metres north-south by 2.84 metres east-west. The objects observed at this site include white ceramic pieces, bone and wood fragments. Previously unrecorded site.

Recommendation = Not vulnerable. Avoidance.

Photo = digital, 35mm and video

Reporter Number = B-53

Permit Number = 03-012A

Project Name = 2003 Meadowbank Archaeological Survey

Location = at the northern end of Whitehills Lake at base of hill where site B-52 is located. It is approximately 900 metres west of the winter road and Delta routes.

Territory = Nunavut

District = Kivalliq

Map Reference = 66A/9

UTM = 14N 636536E 7169281N

Condition = disturbed since 1999

Site Type Class = indigenous historic

Site Type = campsite

Features = tent rings

Culture = Inuit

Researcher's Name = Webster, D.

Observer Date = July 23, 2003

Collections = none

Remarks = drop off site A tent ring is 4.54 metres north-south by 3.54 metres east-west. Recent. Rope piece inside. 5.75 metres southwest is another tent ring which is oval-shaped. Objects at the site include rusted tin cans to south of the second ring, and elsewhere are a small fishing lure without the hook, some wood and glass fragments, a thimble, zipper, plastic, canvas pieces, bone, fishing rod tip, foil, paint can, oil jugs and a store-bought *ulu* (knife) handle. Tent ring number three is located at the base of the hill to the south. There are approximately seven more rings between the base of the hill and the point which may be site B-15 observed from air in 1999. However, barrels seem to be missing so it probably has been disturbed in the last four years.

Recommendation = Not vulnerable. Avoidance.

Photo = 35mm and video

Reporter Number = B-54

Permit Number = 03-012A

Project Name = 2003 Meadowbank Archaeological Survey

Location = at the northern end of Whitehills Lake at the base of a hill. It is approximately 1.1 kilometres west of the winter road and Delta routes.

Territory = Nunavut

District = Kivalliq

Map Reference = 66A/9

UTM = 14N 636325E 7168957N

Condition = good

Site Type Class = indigenous historic

Site Type = campsite

Features = tent rings, hearth

Culture = Inuit

Researcher's Name = Webster, D.

Observer Date = July 23, 2003

Collections = none

Remarks = three fairly recent tent rings. Broken cast iron frying pan in the west tent ring. Hearth is located west of the western tent ring. Quick kill fox trap on the north of the tent rings at the base of the hill. Previously unrecorded site.

Recommendation = Not vulnerable. Avoidance.

Photo = video

Reporter Number = B-55

Permit Number = 03-012A

Project Name = 2003 Meadowbank Archaeological Survey

Location = in the middle of a small hill in the northern Whitehills Lake area, west of a small island and west of Edwin Evo's northern cabin. (Evo's cabin is located at 14WPG 636352E 7168565N). It is approximately 3.1 kilometres west of the winter road and Delta routes.

Territory = Nunavut

District = Kivalliq

Map Reference = 66A/9

UTM = 14N 634705E 7167338N

Condition = disturbed

Site Type Class = indigenous historic

Site Type =

Features = inuksuk

Culture = Inuit

Researcher's Name = Webster, D.

Observer Date = July 23, 2003

Collections = none

Remarks = an inuksuk 84 centimetres high built of 6 rocks and sitting on a larger rock. This inuksuk does not appear to be that old. Another possible toppled inuksuk lies 8.5 metres northwest of the first inuksuk. It was probably built of 5 or 6 rocks. No associated bones or artifacts. Another site with 6 open caches and caribou bones lies east of the inuksuk site. It is located on a pebbled surface. Previously unrecorded site.

Recommendation = Not vulnerable. No mitigation required.

Photo = 35 mm and video

Reporter Number = B-56

Permit Number = 03-012A

Project Name = 2003 Meadowbank Archaeological Survey

Location = north Amarulik Lake. It is approximately 2.7 kilometres east of the winter road route.

Territory = Nunavut

District = Kivalliq

Map Reference = 66A/16

UTM = 14N 636373E 7192130N

Condition = undetermined

Site Type Class = undetermined

Site Type = campsite?

Features = tent ring

Culture = undetermined

Researcher's Name = Webster, D.

Observer Date = July 2003

Collections = none

Remarks = observed from air. Previously unrecorded site.

Recommendation = Not vulnerable. Photograph site.

Photo = not photographed

NB: There is no site B-57.

Reporter Number = B-58

Permit Number = 03-012A

Project Name = 2003 Meadowbank Archaeological Survey

Location = in the proposed marshalling area approximately 2.5 kilometres east of the centre of the Hamlet of Baker Lake. The ATV trail is 9 metres south and the shore is 21 metres south.

Territory = Nunavut

District = Kivalliq

Map Reference = 56 D/5

UTM = 14N 646267E 7134804N (15WUB 356117E 7134692N)

Condition = good

Site Type Class = indigenous historic?

Site Type = campsite

Features = tent ring

Culture = Inuit?

Researcher's Name = Webster, D.

Observer Date = July 25, 2003

Collections = none

Remarks = recent tent ring with 2 sheets of plywood inside. Previously unrecorded site.

Recommendation = archaeologist work with the traditional knowledge specialist to try to determine who occupied the site and when.

Photo = video

Reporter Number = B-59

Permit Number = 03-012A

Project Name = 2003 Meadowbank Archaeological Survey

Location = in the proposed marshalling area approximately 3 kilometres east of the centre of the Hamlet of Baker Lake. 10.7 metres south is the northern ATV trail. David Toolooktuk's cabin is approximately 70 metres north of it.

Territory = Nunavut

District = Kivalliq

Map Reference = 56 D/5

UTM = 14N 646843E 7134544N (15WUB 356666E 7134379N)

Condition = good

Site Type Class = indigenous historic

Site Type = campsite

Features = tent ring

Culture = Inuit

Researcher's Name = Webster, D.

Observer Date = July 25, 2003

Collections = none

Remarks = there are caribou bone fragments associated with this ring. Previously unrecorded site.

Recommendation = archaeologist work with the traditional knowledge specialist to try to determine who occupied the site and when.

Photo = not photographed

Reporter Number = B-60

Permit Number = 03-012A

Project Name = 2003 Meadowbank Archaeological Survey

Location = in the proposed marshalling area approximately 3.3 kilometres east of the centre of the Hamlet of Baker Lake. The northern trail lies nine metres to the north.

Territory = Nunavut

District = Kivalliq

Map Reference = 56 D/5

UTM = 14N 647133E 7134465N (15WUB 356947E 7134273N)

Condition = good

Site Type Class = indigenous historic

Site Type = campsite

Features = tent ring

Culture = Inuit

Researcher's Name = Webster, D.

Observer Date = July 25, 2003

Collections = none

Remarks = a recent tent ring with plywood piece. Previously unrecorded site.

Recommendation = archaeologist work with the traditional knowledge specialist to try to determine who occupied the site and when.

Photo = not photographed

Reporter Number = B-61

Permit Number = 03-012A

Project Name = 2003 Meadowbank Archaeological Survey

Location = in the proposed marshalling area approximately 3.5 kilometres east of the centre of the Hamlet of Baker Lake.

Territory = Nunavut

District = Kivalliq

Map Reference = 56 D/5

UTM = 14N 647277E 7134488N (15WUB 357093E 7134282N)

Condition = good

Site Type Class = indigenous historic?

Site Type = campsite

Features = tent rings

Culture = Inuit

Researcher's Name = Webster, D.

Observer Date = July 25, 2003

Collections = none

Remarks = a tent ring with some flat red rocks with vegetation growth covering it. A rusted file is next to one of the ring rocks. There are cement bricks, plywood pieces and a metal cup. A second tent ring is beside it to the south. Vegetation is growing over the ring. A rubber piece with a nail inside it. There are about two recent rings to the east with wood fragments associated. Previously unrecorded site.

Recommendation = archaeologist work with the traditional knowledge specialist to try to determine who occupied the site and when.

Photo = not photographed

AREA C: OUTSIDE THE MINE SITE AND WINTER ROAD ROUTES

Reporter Number = C-2

Permit Number = 03-012A

Project Name = 2003 Meadowbank Archaeological Survey

Location = Inuhugajualik Lake. West of a pond. Southeast of a hill. 27.1 kilometres west of proposed mine site.

Territory = Nunavut

District = Kivalliq

Map Reference = 66A/16

UTM = 14N 611501E 7207191N

Condition = good

Site Type Class = undetermined

Site Type = undetermined

Features = inuksuk, shelter

Culture = Inuit

Researcher's Name = Webster, D.

Observer Date = July 22, 2003

Collections = none

Remarks = Not shown on attached map. Erect rock approximately 2.10 metres high. Five rocks on the northern end at base. Lichen mostly growing on the north side. A .250 bullet shell and minimal caribou bone fragments are at the site. The purpose of the inuksuk is not known. Nine metres south is a shelter. It is built of about a dozen rocks. This shelter is heavily lichenated. There is a bone fragment nearby. Previously unrecorded site.

Recommendation = Not vulnerable. If this site is visited and recorded by an archaeologist a GPS reading of the middle of the site (from the ground) is required.

Photo = digital, 35 mm and video

Reporter Number = C-3

Permit Number = 03-012A

Project Name = 2003 Meadowbank Archaeological Survey

Location = Inuhugajualik Lake. Northeast of site C-2 on the mouth of the river. 22.3 kilometres southwest of proposed mine site.

Territory = Nunavut

District = Kivalliq

Map Reference = 66A/16

UTM = 14N 616027E 7208303N

Condition = undetermined

Site Type Class = undetermined

Site Type = undetermined

Features = inuksuk

Culture = Inuit?

Researcher's Name = Webster, D.

Observer Date = July 22, 2003

Collections = none

Remarks = Not shown on attached map. Previously unrecorded site. Observed from air.

Recommendation = Not vulnerable. If this site is visited and recorded by an archaeologist a GPS reading of the middle of the site (from the ground) is required.

Photo = 35 mm

Reporter Number = N/A

Permit Number = 03-012A

Project Name = 2003 Meadowbank Archaeological Survey

Location = It is located approximately 11.5 kilometres northeast of the Meadowbank camp.

Territory = Nunavut

District = Kivalliq

Map Reference = 56 E/4

UTM = 14N 645247E, 7222721N (15N 363414E 7222310N)

Condition = undetermined

Site Type Class = undetermined

Site Type = campsite?

Features = possibly a *qarmat*

Culture = undetermined

Researcher's Name = Webster, D.

Observer Date = N/A

Collections = N/A

Remarks = On July 17, 2003 this site was reported to the archaeologist by a contract geologist Brian McGraw. A photo of one feature appears to be that of a *qarmat* or cache- it is difficult to estimate the scale. It is built of heavy rocks, opened with vegetation growth inside. The archaeology crew was flown to this site, but we could not locate it. No site number assigned. Previously unrecorded site.

Recommendation = It is recommended that this site be located and recorded.

APPENDIX B

Study Area Maps & Site Records for 1999 Archaeological Survey

Reporter Number = A-1

Project Name = Meadowbank Archaeological Survey

Location = on top of a hill at the east side of a peninsula at the Third Portage Area between Third and Second Portage Lakes.

Territory = Nunavut

District = Kivalliq

Map Reference = 66H/1

Jurisdiction = Inuit surface and subsurface withdrawal lot BL-14

UTM = 14WPH 639152E 7213405N

Condition = poor

Site Type Class = historic

Features = unidentified feature

Culture = undetermined

Researcher's Name = Webster, D.

Observer Date = July 22, 1999

Collections = no

Remarks = Previously unrecorded site. Circular feature, probably not a tent ring, measures 5.76m north-south by 5.64m east-west. White burlap and plastic tarp pieces, rusted metal fragments inside feature. One cardboard piece under rock. 14 metres southwest of circular feature is a 1 3 metre long (north-south) burnt tarp, numerous nails and burnt wood fragments. No associated bones were observed. No lichen growth on rocks. Vegetation growth inside feature is dead. This feature is located on uneven ground and is not located in an ideal camping spot. This feature was probably used by Cumberland field crew. This site was photographed and recorded on video tape. This is not an archaeological site. Recommendation: no mitigation required.

Reporter Number = A-2

Project Name = Meadowbank Archaeological Survey

Location = at the north end on top of a hill on the west side of a peninsula approximately $\frac{3}{4}$ kilometre southwest of Cumberland Resources exploration camp. The site is 59 metres north of geodetic marker 709164. This site lies within Cumberland's Site A (potential submerged PAG country rock and surface non-PAG disposal).

Territory = Nunavut

District = Kivalliq

Map Reference = 66H/1

Jurisdiction = Inuit surface and subsurface withdrawal lot BL-14

UTM = 14WPH 637339E 7212570N

Condition = excellent

Site Type Class = undetermined

Features = unidentified feature

Culture = undetermined

Researcher's Name = Webster, D.

Observer Date = July 22, 1999

Collections = no

Remarks = Previously unrecorded site. Small, oval, unidentified feature with a long, lichenated, rectangular flat rock in centre. Composed of about a dozen rocks. The dimensions are 2.3 metres north-south by 2.3 metres east-west. Covered with moss. No other associated features or artifacts were observed. Probably an archaeological site. The cultural deposits, if any, within this small feature are probably not deep. It is somewhat vulnerable because it is near camp, but people will have a hard time even recognizing this feature. This site was photographed and recorded on video tape.

Recommendation: If plans for mine development go ahead this site would be impacted so it should be excavated.

Reporter Number = A-3

Project Name = Meadowbank Archaeological Survey

Location = On the north side of a narrow peninsula on Second Portage Lake, approximately 20 metres from the bank. The Cumberland Resources exploration camp is visible from this site and is approximately 2 kilometres west of Site A-3. Outside of proposed project area.

Territory = Nunavut

District = Kivalliq

Map Reference = 66H/1

Jurisdiction = Inuit surface and subsurface withdrawal lot BL-14

UTM = 14WPH 640047E 7212394N

Condition = excellent

Site Type Class = indigenous historic

Features = graves

Culture = Inuit

Researcher's Name = Webster, D.

Observer Date = July 23, 1999

Collections = no

Remarks = There are two features at this site. The first feature was thought to be an adult grave measuring 1.9 metres north-south by 3.3 metres east-west. However, according to Elder Silas Kalluk, it is a child's grave. The grave is oriented in east-west direction. There is no white quartzite marker on the north or south end except in front of the cross on the east side. The grave is composed of heavy rocks. There is no visible coffin or bones. On the east end is a white cross with the following inscription in Inuktitut syllabics,

1941

gfK

gbo

which translates to "Tutali died in 1941." There is lichen growth on the rocks. 11.7 metres north-north-west of this grave is a child's grave. The dimensions are 1.9 metres north-south by 1.2 metres east-west. This grave is oriented north-south. There is no cross. It is made of a wooden box (broken) with rusted nails. There is no quartzite rock on either end. The grave lies on the north side of a boulder. No funerary objects with either grave. Visible bone. Lichenated rocks. This site was recorded on video tape. According to Elder Silas Kalluk, the graves across from Makilaju's grave are both children. One child, Nanauq and Ainaaluk's son, died before he started walking. Although this site is outside the proposed project area, it is close and because it is a grave site, it is highly recommended that a buffer zone be discussed with the Baker Lake Hamlet Council. Previously unrecorded site.

Reporter Number = A-4

Project Name = Meadowbank Archaeological Survey

Location = on the south side of a hill on a peninsula on north shore of Second Portage Lake.
3 kilometres northeast of Cumberland Resources exploration camp. It is 87 metres west of site A-5.
Outside of proposed project area.

Territory = Nunavut

District = Kivalliq

Map Reference = 66H/1

Jurisdiction = Inuit surface and subsurface withdrawal lot BL-14

UTM = 14WPH 640929E 7213678N

Condition = excellent

Site Type Class = indigenous historic

Features = grave

Culture = Inuit

Researcher's Name = Webster, D.

Observer Date = July 23, 1999

Collections = no

Remarks = An adult grave measuring 3.5 metres long by 1.8 metres wide. The length is oriented almost north-south, but a bit off. Visible bones including skull. Lichenated rocks. No white quartzite headstone. An old wooden, dismantled cross lies to the west. No other funerary objects were seen. The inscription on the white cross in syllabics is:

gfK

1953u

52

David MmrMJ

which translates to "Died 1953. 52 years. David Makilaju." This site was photographed and recorded on video tape. Makilaju was Anirnaaryuk's (Martha Ikinilik-sp) father. This site is associated with site A-5. According to Silas Kalluk, in early summer Makilaju died of a sickness. All the families made the grave. In 1998 Hattie Mannik, Craig Goodings, Jacob Ikinilik, Josiah Nuilalik and Patrick Tremblay (pilot for Helimax Helicopters) erected a new cross at the grave. Although this site is outside the proposed project area, it is close and because it is a grave site, it is highly recommended that a buffer zone be discussed with the Baker Lake Hamlet Council. Previously unrecorded site.

Reporter Number = A-5

Project Name = Meadowbank Archaeological Survey

Location = on the south side of a hill on a peninsula on north shore of Second Portage Lake.
3 kilometres northeast of Cumberland Resources exploration camp. 87 metres east of Site A-4.
Outside of proposed project area.

Territory = Nunavut

District = Kivalliq

Map Reference = 66H/1

Jurisdiction = Inuit surface and subsurface withdrawal lot BL-14

UTM = 14WPH 640978E 7213632N

Condition = good

Site Type Class = indigenous historic

Features = tent rings, hearths

Culture = Inuit

Researcher's Name = Webster, D.

Observer Date = July 23 and 24, 1999

Collections = no

Remarks = According to Silas Kalluk, in 1953, the year that David Makilaju died, the following families camped in the area; Nagugalik, Taliqpahik, Tirriganiak, Ikinilik and Kalluk. The families camped at site A-5 and/or A-6 and/or A-7 one or two months before Makilaju died. There are 7 features at this site. The first feature is a circular tent ring constructed of about 27 lichenated rocks. The dimensions are 4.3 metres north-south by 4.5 metres east-west. It has a small circular feature on the south side with 4 wooden net floats inside it. There are canvas fragments, a rusted corned beef tin on the east side. There are numerous small willow fragments in the centre. A rusted tin lies outside the ring to the east. Broken glass jar fragments east of tent ring. 15.8 metres east are more willow fragments. No associated bones were observed. The second feature is a tent ring that lies 15.8 metres east of the first tent ring. The size is 5.1 metres north-south by 4.7 metres east-west. The ring was built with about a dozen rocks. It is light. No discernible entrance. There is a small circular feature on the south side. Lichenated rocks. Recent site. There is garbage associated with it. South of the tent ring is a rusted, dismantled stove and tin can. A cut 10 gallon barrel lies to the southwest. 10.2 metres east of A-5b is A-5c. It is a tent ring that measures 4.5 metres east-west by 5.4 metres north-south. Tin cans lie to the south. A lichenated caribou bone is on the southwest side. A .300 savage bullet shell is to the south. Inside the ring there is a white lichenated button with 2 holes. Canvas fragments are on the east side of the ring. Wood fragments are outside the ring on the northwest side. 12.9 metres east of feature A-5c is A-5d. It is another tent ring that measures 3.6 metres east-west by 5.2 metres north-south. A-5e is 12.7 metres east of A-5d. It is an oval to circular-shaped tent ring measuring 4.6 metres north-south by 4.1 metres east-west. This ring is small and made of approximately 22

rocks. Near the centre of the tent ring is a metal scraping blade with 20 drilled holes on the proximal end. Canvas fragments and caribou bone are inside. One wooden net float is on the east side inside the ring. Small, arctic willow fragments are also in the ring. One clear hour-glass shaped bottle, with no lid. The numbers on the bottom of the bottle read 351216. More clear glass fragments. 1 wash basin on west side. There is a clear broken bottle with a screw-top lid intact. There is a yellow metal possibly match box bottom and metal tubular container. There is a drilled metal fragment on the west side. There are more objects in the surrounding area. 12 metres south of A-5e is A-5f, a hearth. It is u-shaped. 17.2 metres west of A-5e is A-5g, another hearth. This hearth is also u-shaped. It is next to a boulder with a single stone marker on top. This site was recorded on video tape. It is recommended that Silas Kalluk and another elder return to this site to confirm whether or not he camped at this site. Previously unrecorded site.

Reporter Number = C-1

Project Name = Meadowbank Archaeological Survey

Location = On top of a bedrock hill at Inuggugayualik north of small east arm of Tahirjuaraaqjuk Lake. Approximately 13.5 kilometres west of Cumberland Resources exploration camp. Outside the proposed project area. There is a commanding view of the area from this site.

Territory = Nunavut

District = Kivalliq

Map Reference = 66H/1

Jurisdiction = Inuit surface and subsurface withdrawal lot BL-14

UTM = 14WPH 624225E 7214297N

Condition = excellent

Site Type Class = undetermined

Features = unidentified feature, marker

Culture = undetermined

Researcher's Name = Webster, D.

Observer Date = July 23, 1999

Collections = no

Remarks = feature a is a shelter-like feature or blind built of approximately 15 rocks. There is a lot of lichen growth. The feature runs in an east-west direction. Feature b is 13.2 metres west of an upright rock on top of a larger boulder. The marker measures 1.15 metres high. No associated bones or artifacts observed. This site was recorded on video tape. From the air Jose said that he spotted an opened cache less than a kilometre south-west of this site. There were no visible bones. There is a marker, one rock on a boulder, to the south-east of the cache. This cache was not visited by the archaeologist. Previously unrecorded site.

Reporter Number = A-6

Project Name = Meadowbank Archaeological Survey

Location = on the south side of a hill on a peninsula at the north shore of Second Portage Lake. 3 kilometres north-east of Cumberland Resources exploration camp. Outside of proposed project area.

Territory = Nunavut

District = Kivalliq

Map Reference = 66H/1

Jurisdiction = Inuit surface and subsurface withdrawal lot BL-14

UTM = 14WPH 641077E 7213597N

Condition = good

Site Type Class = indigenous historic

Features = tent rings, cache

Culture = Inuit

Researcher's Name = Webster, D.

Observer Date = July 24, 1999

Collections = no

Remarks = There are 5 features at this site. The first feature is a tent ring made of 30+ rocks. It is 4.4 metres north-south by 3.44 metres east-west. There are caribou bone fragments and worked wood fragments inside the tent ring. No noticeable entrance. Possible divider on north end. A-6b is approximately 25 metres north of A-6a. This tent ring is composed of about 16 rocks. There is a divider made of 2 long, thin rocks. It measures 4.1 metres north-south by 2.1 metres east-west. No associated bones were seen. One unidentified metal object about 7 metres southeast of ring. The third feature is an unidentified c-shaped feature and is located 6.6 metres south of A-6a. It looks like an opened cache. There are associated bones that have been broken for the marrow. The fourth feature, probably an unopened cache, is 8.1 metres west of A-6c. It measures 2.7 metres north-south by 2.1 metres east-west. There are some bones scattered around the area. There is also a wood sled cross slat to the west of A-6c or northeast of A-6d. Lastly, 30 metres south of A-6d is A-6e, a light tent ring made of approximately 31 rocks. The ring is 4.1 metres north-south by 2.8 metres east-west. No visible entrance. There is a divider on the north end. A jumble of about 5 rocks are on the south end. There are some bone fragments inside the tent ring. This site was photographed and recorded on video tape. It is recommended that Silas Kalluk and another elder return to this site to confirm whether or not he camped at this site. Previously unrecorded site.

Reporter Number = A-7

Project Name = Meadowbank Archaeological Survey

Location = on the south side of a hill on a peninsula on north shore of Second Portage Lake.
162 metres south of A-6. 3 kilometres northeast of Cumberland Resources exploration camp. Outside of proposed project area.

Territory = Nunavut

District = Kivalliq

Map Reference = 66H/1

Jurisdiction = Inuit surface and subsurface withdrawal lot BL-14

UTM = 14WPH 641077E 7213341N

Condition = good

Site Type Class = indigenous historic

Features = tent rings, hearth

Culture = Inuit

Researcher's Name = Webster, D.

Observer Date = July 24, 1999

Collections = no

Remarks = There are 5 features at this site. The first feature is a tent ring measuring 2.9 metres north-south by 2.5 metres east-west. It is a small, circular tent ring with a rock in the centre. It is built of 21 rocks. There is a lot of vegetation growth and 1 caribou bone fragment inside. A tin lid lies outside it to the west. 9.6 metres southeast of A-7a is A-7b, another tent ring. This ring is 3.7 metres north-south by 4.1 metres east-west. The tent ring was built with approximately 22 rocks. Covered with vegetation. Caribou bone and canvas fragments inside the ring. The third feature, A-7c, located 7 metres south of A-7b, is also a tent ring. It is 3.65 metres north-south by 3 metres east-west. This ring is well covered with vegetation and it is deep, almost subterranean. There is a piece of canvas in it. No associated bones observed. 55 metres southwest of A-7c is A-7d. It is an oval-shaped tent ring with a divider. The dimensions are 4.6 metres north-south by 3.4 metres east-west. There is a coast to coast lid inside A-7d. 7.3 metres southeast is a U-shaped hearth (A-7e). There are wood and bone fragments inside. One nail was also found. Features a, b and c were photographed, but d and e were not photographed because of the bad weather. It is recommended that Silas Kalluk and another elder return to this site to confirm whether or not he camped at this site. Previously unrecorded site.

Reporter Number = A-8

Project Name = Meadowbank Archaeological Survey

Location = on top of a ridge approximately 700 metres off the north shore of Third Portage Lake.
Approximately 500 metres west of Cumberland's Site C1 Area.

Territory = Nunavut

District = Kivalliq

Map Reference = 66H/1

Jurisdiction = Inuit surface and subsurface withdrawal lot BL-14

UTM = 14WPH 636688E 7216660N

Condition = good

Site Type Class = undetermined

Features = tent rings

Culture = undetermined

Researcher's Name = Webster, D.

Observer Date = July 25, 1999

Collections = no

Remarks = There are 2 tent rings at this site. The first is round, with no divider. The size is 4.8 metres north-south by 3.8 metres east-west. No associated bones or artifacts observed. Lichenated rocks. The second tent ring is located 36.30 metres southeast of the first one. It is 4.4 metres north-south by 4.30 metres east-west. This is a circular ring with some vegetation coverage. No divider. No visible entrance. Caribou bone fragments on north end. There is some flagging tape and one staking picket in the area. This site was recorded on video tape. Because of its proximity to the tailings site, it is recommended that an archaeologist excavate a test pit at this site. Previously unrecorded site.

Reporter Number = A-9

Protect Name = Meadowbank Archaeological Survey

Location = Near southwest side of a narrow peninsula between Second and Third Portage Lakes.
Approximately 250 metres northwest of Site A-3. Outside of proposed project area.

Territory = Nunavut

District = Kivalliq

Map Reference = 66H/1

Jurisdiction = Inuit surface and subsurface withdrawal lot BL-14

UTM = 14WPH 639601E 7212601N

Condition = excellent

Site Type Class = undetermined

Features = unidentified feature

Culture = undetermined

Researcher's Name = Webster, D.

Observer Date = July 25, 1999

Collections = no

Remarks = An oval-shaped feature constructed of 10 rocks. 1.5 metres north-south by 0.90 metre east-west. No associated bones or artifacts at site. No vegetation growth in centre. Mistakenly recorded on video tape as Site A-10. It is recommended that Silas Kalluk and/or another elder look at this site to help identify it. Previously unrecorded site.

Reporter Number = B-1

Project Name = Meadowbank Archaeological Survey

Location = on and near a ridge near the end of the west arm of Tehek Lake. 3.5 kilometres east of the winter road route.

Territory = Nunavut

District = Kivalliq

Map Reference = 66A/16

Jurisdiction = Inuit surface and subsurface withdrawal lot BL-14

UTM = 14WPH 636669E 7203182N

Condition = excellent

Site Type Class = possibly Thule and/or indigenous historic?

Features = tent rings, caches, hearth, semi-subterranean houses

Culture = Inuit

Researcher's Name = Webster, D.

Observer Date = July 29, 1999

Collections = no

Remarks = This site was recorded quickly. It contains at least 2 tent rings, 2 caches, a hearth, heavy semi-subterranean houses made of quartzite slabs and 4 lead weights for making bullets. There are some wood fragments and caribou bone. There is a lot of vegetation growth including arctic willow and moss. This site was recorded on video tape. The pilot informed us about this site. According to the report on Archaeological Resources and Traditional Uses, this area was used. Previously unrecorded site.

Reporter Number = B-2

Project Name = Meadowbank Archaeological Survey

Location = on a small point at northeast shore of Amarulik Lake. Approximately 500 metres east of winter road route.

Territory = Nunavut

District = Kivalliq

Map Reference = 66A/16

Jurisdiction = Federal Crown Land

UTM = 14WPG 633994E 7191792N

Condition = undetermined

Site Type Class = undetermined (historic or indigenous historic?)

Features = tent rings

Culture = undetermined

Researcher's Name = Webster, D.

Observer Date = July 29, 1999

Collections = no

Remarks = Site observed and mapped from helicopter. One square and one round tent ring.
Previously unrecorded site.

Reporter Number = B-3

Project Name = Meadowbank Archaeological Survey

Location = on both sides of narrows at entrance to southeast arm of Amarulik Lake. Immediate vicinity of winter road route.

Territory = Nunavut

District = Kivalliq

Map Reference = 66A/16

Jurisdiction = Federal Crown Land

UTM = 14WPG 634179E 7190407N

Condition = undetermined

Site Type Class = undetermined (indigenous historic?)

Features = markers, tent rings, possible shelter

Culture = Inuit?

Researcher's Name = Webster, D.

Observer Date = July 29, 1999

Collections = no

Remarks = Site observed and mapped from helicopter. The site consists of what appear to be two recent tent rings and one old tent ring, many markers and one possible shelter. Caribou antler and wood visible. Recorded on videotape from air. Previously unrecorded site.

Reporter Number = B-4

Project Name = Meadowbank Archaeological Survey

Location = west side of narrows/rapids of southeast arm of Amarulik Lake, approximately 3 kilometres south of Site B-3. Immediate vicinity of winter road route.

Territory = Nunavut

District = Kivalliq

Map Reference = 66A/16

Jurisdiction = Federal Crown Land

UTM = 14WPG 635188E 7187962N

Condition = undetermined

Site Type Class = undetermined (indigenous historic?)

Features = *inuksuk*, fox trap, tent ring

Culture = Inuit

Researcher's Name = Webster D.

Observer Date = July 29, 1999

Collections = no

Remarks = Site observed and mapped from helicopter. At this site there is an *inuksuk*, a tower-trap or *ublihaut* fox trap with bone inside and 1 heavy tent ring Recorded on videotape from air. Previously unrecorded site.

Reporter Number = B-5

Project Name = Meadowbank Archaeological Survey

Location = on bank near north shore of southeast arm of Amarulik Lake. Approximately 100 metres north of winter road route.

Territory = Nunavut

District = Kivalliq

Map Reference = 66A/16

Jurisdiction = Federal Crown Land

UTM = 14WPG 637147E 7186351N

Condition = excellent

Site Type Class = undetermined (indigenous historic?)

Features = tent rings, hearths, shelter

Culture = Inuit

Researcher's Name = Webster, D.

Observer Date = July 29, 1 999

Collections = no

Remarks = This site contains 3 tent rings, at least 2 hearths, 1 shelter and a barrel. Objects left behind at this site include wood fragments, antennae, *kamutik*, "From Coast to Coast" lid, handmade fish hook, canvas fragments. Recorded on videotape. This site was recently occupied. Previously unrecorded site.

Reporter Number = B-6

Project Name = Meadowbank Archaeological Survey

Location = on portage between Amarulik and Amaruliaruhiq Lakes. Immediate vicinity of winter road route.

Territory = Nunavut

District = Kivalliq

Map Reference = 66A/9

Jurisdiction = Federal Crown Land

UTM = 14WPG 637900E 7183225N

Condition = undetermined

Site Type Class = undetermined (indigenous historic?)

Features = *qarmat*

Culture = Inuit

Researcher's Name = Webster, D.

Observer Date = July 29, 1999

Collections = no

Remarks = Site observed and mapped from helicopter. Single *qarmat*. Recorded on video tape from air. Previously unrecorded site.

Reporter Number = B-7

Project Name = Meadowbank Archaeological Survey

Location = centre of small island in Amaruliaruhiq Lake. Approximately 150 metres west of the winter road route.

Territory = Nunavut

District = Kivalliq

Map Reference = 66A/9

Jurisdiction = Federal Crown Land

UTM = 14WPG 637946E 7181587N

Condition = undetermined

Site Type Class = undetermined

Features = unidentified feature

Culture = undetermined

Researcher's Name = Webster, D.

Observer Date = July 29, 1999

Collections = no

Remarks = Site observed and mapped from helicopter. Unidentified feature. Previously unrecorded site.

Reporter Number = B-8

Project Name = Meadowbank Archaeological Survey

Location = west of portage on north end of Hanningayukuluk Lake. Immediate vicinity of winter road route.

Territory = Nunavut

District = Kivalliq

Map Reference = 66A/9

Jurisdiction = Federal Crown Land

UTM = 14WPG 634618E 7178204N

Condition = undetermined

Site Type Class = undetermined (historic or indigenous historic?)

Features = tent ring

Culture = undetermined

Researcher's Name = Webster, D.

Observer Date = July 29, 1999

Collections = no

Remarks = Site observed and mapped from helicopter. Square-shaped tent ring. Previously unrecorded site.

Reporter Number = B-9

Project Name = Meadowbank Archaeological Survey

Location = South side of east arm of Hanningayukuluk Lake. Approximately 2 kilometres southwest of Site B-8. Approximately 250 metres south of winter road route.

Territory = Nunavut

District = Kivalliq

Map Reference = 66A/9

Jurisdiction = Federal Crown Land

UTM = 14WPG 632469N 7177209N

Condition = undetermined

Site Type Class = undetermined

Features = marker

Culture = Inuit

Researcher's Name = Webster, D.

Observer Date = July 29, 1999

Collect ions = no

Remarks = Site observed and mapped from helicopter. Single marker. Previously unrecorded site.

Reporter Number = B-10

Project Name = Meadowbank Archaeological Survey

Location = on the east side of narrows at the south end of Hanningayukuluk Lake. Approximately 150 metres east of winter road route.

Territory = Nunavut

District = Kivalliq

Map Reference = 66A/9

Jurisdiction = Federal Crown Land

UTM = 14WPG 632538E 7174318N

Condition = undetermined

Site Type Class = undetermined (indigenous historic?)

Features = cache

Culture = Inuit

Researcher's Name = Webster, D.

Observer Date = July 29, 1999

Collections = no

Remarks = Site observed and mapped from helicopter. Recent cache? Previously unrecorded site.

Reporter Number = B-11

Project Name = Meadowbank Archaeological Survey

Location = on an island in river between Hanningayukuluk Lake and Whitehills Lake. Approximately 300 metres west of winter road route.

Territory = Nunavut

District = Kivalliq

Map Reference = 66A/9

Jurisdiction = Federal Crown Land

UTM = 14WPG 634025E 7173841N

Condition = undetermined

Site Type Class = undetermined (historic?)

Features = tent ring

Culture = non-Inuit?

Researcher's Name = Webster, D.

Observer Date = July 29, 1999

Collections = no

Remarks = A tent ring was observed and mapped from helicopter. According to the pilot a Geological Survey of Canada crew camped on this island in 1998. Previously unrecorded site.

Reporter Number = B-12

Project Name = Meadowbank Archaeological Survey

Location = on the west side of narrows/rapids at the north end of Whitehills Lake. Immediate vicinity of winter road route.

Territory = Nunavut

District = Kivalliq

Map Reference = 66A/9

Jurisdiction = Federal Crown Land

UTM = 14WPG 635847E 7173403N

Condition = undetermined

Site Type Class = undetermined (indigenous historic?)

Features = tent rings, *qarmat?*, unidentified feature

Culture = Inuit

Researcher's Name = Webster, D.

Observer Date = July 29, 1999

Collections = no

Remarks = Site observed and mapped from helicopter. Large oval-shaped tent ring, caribou skin, wooden picket, *qarmat?* and 1 unidentified feature. Previously unrecorded site.

Reporter Number = B-13

Project Name = Meadowbank Archaeological Survey

Location = north shore of Whitehills Lake on top of hill. 1.5 kilometre east of winter road route.

Territory = Nunavut

District = Kivalliq

Map Reference = 66A/9

Jurisdiction = Federal Crown Land

UTM = 14WPG 638302E 7171439N

Condition = undetermined

Site Type Class = undetermined (historic or indigenous historic?)

Features = tent rings

Culture = Inuit?

Researcher's Name = Webster, D.

Observer Date = July 29, 1999

Collections = no

Remarks = Site observed and mapped from helicopter. One square tent ring and 1 double oval-shaped tent ring. Previously unrecorded site.

Reporter Number = B-14

Project Name = Meadowbank Archaeological Survey

Location = On a prominent hill on north end of Whitehills Lake, 300 metres from shore. Approximately 1 kilometre east of winter road route. Commanding view of lake and area.

Territory = Nunavut

District = Kivalliq

Map Reference = 66A/9

Jurisdiction = Federal Crown Land

UTM = 14WPG 6379784E 7170634N

Condition = excellent

Site Type Class = indigenous historic

Features = graves

Culture = Inuit

Researcher's Name = Webster, D.

Observer Date = July 29, 1999

Collections = no

Remarks = This site contains two graves oriented north-south. The graves are made of quartzite rocks. Bones are visible in one grave. The crosses lie 30 metres north-east of grave. The Inuktitut syllabic inscription on one cross is:

wkJ
mp
xeg34 1945

4
Xo
gfJ

which roughly translates to "Born May Aqituq 1945 ? Died." The second inscription on the cross is:

1944 t4E^SZix 1945
gfx
xi

which translates to "1944 (born)? Died 1945." Recorded on videotape. It is recommended that a buffer zone be discussed with the Baker Lake Hamlet Council. Previously unrecorded site.

Reporter Number = B-15

Project Name = Meadowbank Archaeological Survey

Location = north end of Whitehills Lake on point on west shore. Approximately 300 metres west of winter road route.

Territory = Nunavut

District = Kivalliq

Map Reference = 66A/9

Jurisdiction = Federal Crown Land

UTM = 14WPG 636863E 7169701N

Condition = undetermined

Site Type Class = undetermined (historic or indigenous historic?)

Features = tent rings

Culture = Inuit?

Researcher's Name = Webster, D.

Observer Date = July 29, 1999

Collections = no

Remarks = Site observed and mapped from helicopter. Approximately 8+ tent rings and barrels. Appears to be recent. Previously unrecorded site.

Reporter Number = B-16

Project Name = Meadowbank Archaeological Survey

Locations = on point on the west shore at middle of Whitehills Lake. Approximately 1 kilometre west of winter road route.

Territory = Nunavut

District = Kivalliq

Map Reference = 66A/9

Jurisdiction = Federal Crown Land

UTM = 14WPG 637243E 7164721N

Condition = undetermined

Site Type Class = undetermined (historic or indigenous historic?)

Features = tent ring

Culture = Inuit?

Researcher's Name = Webster, D.

Observer Date = July 29, 1999

Collections = no

Remarks = Site observed and mapped from helicopter. Tent ring with square in the middle. Appears to be a recent site. Previously unrecorded site,

Reporter Number = B-17

Project Name = Meadowbank Archaeological Survey

Location = west shore of Whitehills Lake near the south end. Approximately 500 metres west of winter road route.

Territory = Nunavut

District = Kivalliq

Map Reference = 66A/9

Jurisdiction = Inuit surface withdrawal lot BL-18-66A

UTM = 14WPG 639625E 7157743N

Condition = good

Site Type Class = indigenous historic

Features = markers, grave, tent ring, unidentified feature

Culture = Inuit

Researcher's Name = Webster, D.

Observer Date = July 29, 1999

Collections = no

Remarks = This site has 2 markers, 1 grave, 1 c-shaped feature, 1 tent ring and 1 can. The grave measures 2.55 metres north-south by 1.95 metres east-west. It has an opened top. Skull and bones visible. There is no white quartzite stone on either end. There is a white wooden cross on east side and an old wooden cross on the west side. Arctic willow growth. Recorded on videotape. It is recommended that a buffer zone be discussed with the Baker Lake Hamlet Council. Previously unrecorded site.

Reporter Number = B-18

Project Name = Meadowbank Archaeological Survey

Location = west shore near the south end of Whitehills Lake. Approximately 800 metres west of winter road route.

Territory = Nunavut

District = Kivalliq

Map Reference = 66A/9

Jurisdiction = Inuit surface withdrawal lot BL-18-66A

UTM = 14WPG 638942E 7157793N

Condition = undetermined

Site Type Class = undetermined (indigenous historic?)

Features = tent ring, cache

Culture = Inuit

Researcher's Name = Webster, D.

Observer Date = July 29, 1999

Collections = no

Remarks = Site observed and mapped from helicopter. There is a square tent ring and a cache with associated antlers at this site. Previously unrecorded site.

Reporter Number = B-19

Project Name = Meadowbank Archaeological Survey

Location = west shore near the south end of Whitehills Lake. Approximately 300 metres west of winter road route.

Territory = Nunavut

District = Kivalliq

Map Reference = 66A/9

Jurisdiction = Inuit surface withdrawal lot BL-18-66A

UTM = 14WPG 639963E 7156946N

Condition = undetermined

Site Type Class = undetermined

Features = tent ring

Culture = undetermined

Researcher's Name = Webster, D.

Observer Date = July 29, 1999

Collections = no

Remarks = Site observed and mapped from helicopter. Previously unrecorded site.

Reporter Number = B-20

Project Name = Meadowbank Archaeological Survey

Location = on the west shore on point of Qamanauga'naaq Lake. Immediate vicinity of winter road route.

Territory = Nunavut

District = Kivalliq

Map Reference = 66A/8

Jurisdiction = Inuit surface withdrawal lot BL-18-66A

UTM = 14WPG 640644E 7153497N

Condition = undetermined

Site Type Class = undetermined

Features = marker, tent ring

Culture = Inuit?

Researcher's Name = Webster, D.

Observer Date = July 29, 1999

Collections = no

Remarks = Site observed and mapped from helicopter. Marker and 2 possible tent rings. Previously unrecorded site.

Reporter Number = B-21

Project Name = Meadowbank Archaeological Survey

Location = on the east shore, 300 metres east of rapids at Qamanauga'naaq Lake. Immediate vicinity of winter road route.

Territory = Nunavut

District = Kivalliq

Map Reference = 66A/8

Jurisdiction = Federal Crown Land

UTM = 14WPG 640967E 7152016N

Condition = undetermined

Site Type Class = undetermined (historic or indigenous historic?)

Features = tent ring

Culture = Inuit?

Researcher's Name = Webster, D.

Observer Date = July 29, 1999

Collections = no

Remarks = Site observed and mapped from helicopter. One square tent ring. Previously unrecorded site.

Reporter Number = B-22

Project Name = Meadowbank Archaeological Survey

Location = on portage, east side of rapids at narrows between Qamanauga'naaq Lake and Qamanaugatuaq Lake

Lake. Immediate vicinity of winter road route.

Territory = Nunavut

District = Kivalliq

Map Reference = 66A/8

Jurisdiction Federal Crown Land

UTM = 14WPG 642855E 7150079N

Condition = undetermined

Site Type Class = undetermined (historic or indigenous historic?)

Features = tent ring

Culture = Inuit?

Researcher's Name = Webster, D.

Observer Date = July 29, 1999

Collections = no

Remarks = Site observed and mapped from helicopter. Square tent ring. Previously unrecorded site.

Reporter Number = B-23

Project Name = Meadowbank Archaeological Survey

Location = on the east shore near north end of Qamanaugatuaq Lake. Approximately 300 metres east of winter road route.

Territory = Nunavut

District = Kivalliq

Map Reference- = 66A/8

Jurisdiction = Federal Crown Land

UTM = 14WPG 644916E 7148493N

Condition = undetermined

Site Type Class = undetermined (historic or indigenous historic?)

Features = tent ring

Culture = Inuit?

Researcher's Name = Webster, D.

Observer Date = July 29, 1999

Collections = no

Remarks = Site observed and mapped from helicopter. One tent ring. Possibly recent. Previously unrecorded site.

Reporter Number = B-24

Project Name = Meadowbank Archaeological Survey

Location = on the east shore of Qamanaugatuaq Lake. Approximately 500 metres east of winter road route.

Territory = Nunavut

District = Kivalliq

Map Reference = 66A/8

Jurisdiction = Federal Crown Land

UTM = 14WPG 644386E 7147447N

Condition = undetermined

Site Type Class = undetermined

Features = tent ring

Culture = Inuit?

Researcher's Name = Webster, D.

Observer Date = July 29, 1999

Collections = no

Remarks = Site observed and mapped from helicopter. One tent ring with associated wood.
Previously unrecorded site.

Reporter Number = B-25

Project Name = Meadowbank Archaeological Survey

Location = on the east side near the head of Prince River. Approximately 700 metres east of winter road route.

Territory = Nunavut

District = Kivalliq

Map Reference = 56D/5

Jurisdiction = Federal Crown Land

UTM = 15WUB 649255E 7141530N

Condition = undetermined

Site Type Class = undetermined (historic or indigenous historic?)

Features = tent rings

Culture = Inuit?

Researcher's Name = Webster, D.

Observer Date = July 29, 1999

Collections = no

Remarks = Site observed and mapped from helicopter. Two tent rings including 1 square-shaped ring. Previously unrecorded site.

Reporter Number = B-26

Project Name = Meadowbank Archaeological Survey

Location = south of small lake along all-weather road to Prince River. Approximately 1 kilometre east of winter road route.

Territory = Nunavut

District = Kivalliq

Map Reference = 56D/5

Jurisdiction = Municipal lands, Hamlet of Baker Lake

UTM = 15WUB 648903E 7138090N

Condition = undetermined

Site Type Class = undetermined (historic or indigenous historic?)

Features = tent rings

Culture = Inuit?

Researcher's Name = Webster, D.

Observer Date = July 29, 1999

Collections = no

Remarks = Site observed and mapped from helicopter. Four tent rings including 1 square tent ring near road. Previously unrecorded site.

Reporter Number = B-27

Project Name = Meadowbank Archaeological Survey

Location = near junction of all-weather road to Prince River and winter road route. Approximately 300 metres east of winter road route.

Territory = Nunavut

District = Kivalliq

Map Reference = 56D/5

Jurisdiction = Municipal lands, Hamlet of Baker Lake

UTM = 15WUB 648273E 7138299N

Condition = undetermined

Site Type Class = undetermined (historic or indigenous historic?)

Features = tent rings

Culture = Inuit?

Researcher's Name = Webster, D.

Observer Date = July 29, 1999

Collections = no

Remarks = Site observed and mapped from helicopter. Two circular and 2 square-shaped tent rings. Previously unrecorded site.

Reporter Number = B-28

Project Name = Meadowbank Archaeological Survey

Location = approximately 400 metres south of the junction of the all-weather road to Prince River and the winter road route.

Territory = Nunavut

District = Kivalliq

Map Reference = 56D/5

Jurisdiction = Municipal lands, Hamlet of Baker Lake

UTM = 15WUB 647957E 7138157N

Condition = undetermined

Site Type Class = undetermined (historic or indigenous historic?)

Features = tent ring

Culture = Inuit?

Researcher's Name = Webster, D.

Observer Date = July 29, 1999

Collections = no

Remarks = Site observed and mapped from helicopter. One square tent ring. Previously unrecorded site.

Reporter Number = B-29

Project Name = Meadowbank Archaeological Survey

Location = on both sides of the all-weather road approximately 1 kilometre north of Airplane Lake.

Territory = Nunavut

District = Kivalliq

Map Reference = 56D/5

Jurisdiction = Municipal lands, Hamlet of Baker Lake

UTM = 15WUB 647153E 7137432N

Condition = undetermined

Site Type Class = undetermined

Features = tent rings

Culture = Inuit?

Researcher's Name = Webster, D.

Observer Date = July 29, 1999

Collections = no

Remarks = Site observed and mapped from helicopter. Three tent rings including 3 round rings across the road. Previously unrecorded site.

Reporter Number = B-30

Location = Site located on the VOR hill approximately half a kilometre northeast of a cabin 23 metres south of a honda/truck trail.

Territory = Nunavut

District = Kivalliq

Map Reference = 66A/8

Jurisdiction = Municipal lands, Hamlet of Baker Lake

UTM = 14WPG 639640E 7135902N

Condition = threatened

Site Type Class = prehistoric

Features = lithic scatter

Culture = Thule?

Researcher's Name = Webster, D.

Observer Date = August 1, 1999

Collections = no

Remarks = Light grey quartzite flake scatter of less than three dozen flakes in an area covering 0.90 metres by 1.20 metres. No associated artifacts. Someone built a small *inuksuk* near it in 1998 or 1999. Previously unrecorded site.

Reporter Number = N/A

Project Name = Meadowbank Archaeological Survey

Location = Approximately 2 kilometres northwest of Amarulik Lake. 3.5 kilometres west of winter road route.

Territory = Nunavut

District = Kivalliq

Map Reference = 66A/16

Jurisdiction = Federal Crown Land

UTM = 14WPG 629800E 7191880N

Condition = undetermined

Site Type Class = undetermined

Features = possibly tent rings, hearth

Culture = Inuit

Researcher's Name = Webster, D.

Observer Date = N/A

Collections = N/A

Remarks = In 1998 this site was recorded by Dr. Eva Zaleski of the Geological Survey of Canada. Dr. Zaleski completed an archaeological site record and described the site as "several stone constructions using flat naturally occurring flagstones (typically 0.3-0.5 metres in diameter). The largest approximately 5 metre diameter base of flat stones, supported on each other and leaning inward making a ring of about 1 metre height, igloo-like. One end has a porch? Or hearth with supporting upright stones placed like columns (approximately 1 metre high) and partially roofed by stones placed shingle-fashion. Interior is 'paved' with flat stones. There are also several smaller (1-2 metre) outlying constructions with interiors paved by flat stones and rimmed by stones leaning in. Possibly caches or storage?? No implement or tools seen- at least not obviously lying around on surface. On rib bone-caribou??" Dr. Zaleski took a photo of a feature at the site. It is hard to tell without a scale, but the feature in this photo could be a *qarmat* or a tower-type fox trap. Not visited by archaeologist. It is recommended that this site be visited and recorded by an archaeologist. No site number assigned. Previously unrecorded site.

Reporter Number = N/A

Project Name = Meadowbank Archaeological Survey

Location = on top of hill on a quartzite island approximately 5 kilometres northwest of Tehek Lake.
This site is approximately 25 kilometres northeast of the Cumberland Resources exploration camp.
Outside of proposed project area.

Territory = Nunavut

District = Kivalliq

Map Reference = 66H/1

Jurisdiction = ?

UTM = 14WPH 639000E 7238000N

Condition = undetermined

Site Type Class = undetermined

Features = grave, tent rings, fox trap

Culture = Inuit

Researcher's Name = Webster, D.

Observer Date = N/A

Collections = N/A

Remarks = This site was reported by Sally Pehrsson and Erika Greiner. A grave is located on the south side of the island on outcrop. There is 1 tent ring in the middle of the island. There is also a fox trap. Wood fragments or staking pickets. Not visited by archaeologist. No site number assigned. Previously unrecorded site.

Borden Number = LbLa-7

Reporter Number =

Project Name = Meadowbank Archaeological Survey

Location = on frost boil southwest end of pond approximately 1 kilometre north of the Hamlet of Baker Lake.

Territory = Nunavut

District = Kivalliq

Map Reference = 66A/8

Jurisdiction = Municipal lands, Hamlet of Baker Lake

UTM = 14WPG 644771E 7136292N

Condition = good

Site Type Class = prehistoric

Features = lithic scatter

Researcher's Name = Harp, E; Gordon, B.C.; Webster, D.

Observer Date = July 27, 1999

Collections = no

Published Reference = 1961 Harp, E. "Archaeology of the Lower and Middle Thelon, Northwest Territories" AINA Technical Paper No. 8; 1959 Harp, E. "Ecological Continuity on the Barren Grounds" POLAR NOTES, Occasional Publication of The Stefansson Collection, Dartmouth College Library, Hanover, New Hampshire, Number 1; 1962 Harp, E. "The Culture History of the Central Barren Grounds" AINA Technical Paper No. 11; 1974 Gordon, B.C. "1974 Thule Culture Investigations at Baker Lake, N.W.T." Canadian Archaeological Association Bulletin No. 6

Unpublished reference = ASC ARCHIVES Ms. 276; ASC ARCHIVES Ms. 1141

Remarks = Approximately 11 white quartz flakes. Lichen growth on core. No artifacts observed, only flakes. Site is within a 40 centimetre area. Rifle shell nearby.

Borden Number = LbLa-1

Reporter Number =

Location = 16.60 metres south and east of a road to Blueberry Hill and south of a gravel pit.

Territory = Nunavut

District = Kivalliq

Map Reference =

Jurisdiction = Municipal lands, Hamlet of Baker Lake

UTM = 14WPG 640764E 7133861N

Condition = disturbed, threatened

Site Type Class = prehistoric

Features = tent rings; lithic scatter

Culture = Thule

Researcher's Name = Mary-Rousseliere, G; Harp, E; Gordon, B.C.; Webster, D.

Observer Date = July 31, 1999

Collections = no

Published Reference = 1960 Harp, E. "Archaeological Research in Arctic North America: (1958-1960)" ANTHROPOLOGICA New Series Vol. 2, No. 2; 1959 Harp, E. "Ecological Continuity on the Barren Grounds" POLAR NOTES, Occasional Publication of The Stefansson Collection, Dartmouth College Library, Hanover, New Hampshire, Number 1; 1962 Harp, E. "The Culture History of the Central Barren Grounds" AINA Technical Paper No. 11

Unpublished Reference = ASC ARCHIVES Ms. 265; ASC ARCHIVES Ms. 1141

Remarks = Tent rings are located 16.60 metres south and east of a road and south of a gravel pit. The rocks of one of the tent rings have been displaced. Bulldozer tracks run through the site and directly over one of the tent rings. There is a metal fragment at the site. There are five quartzite flakes.