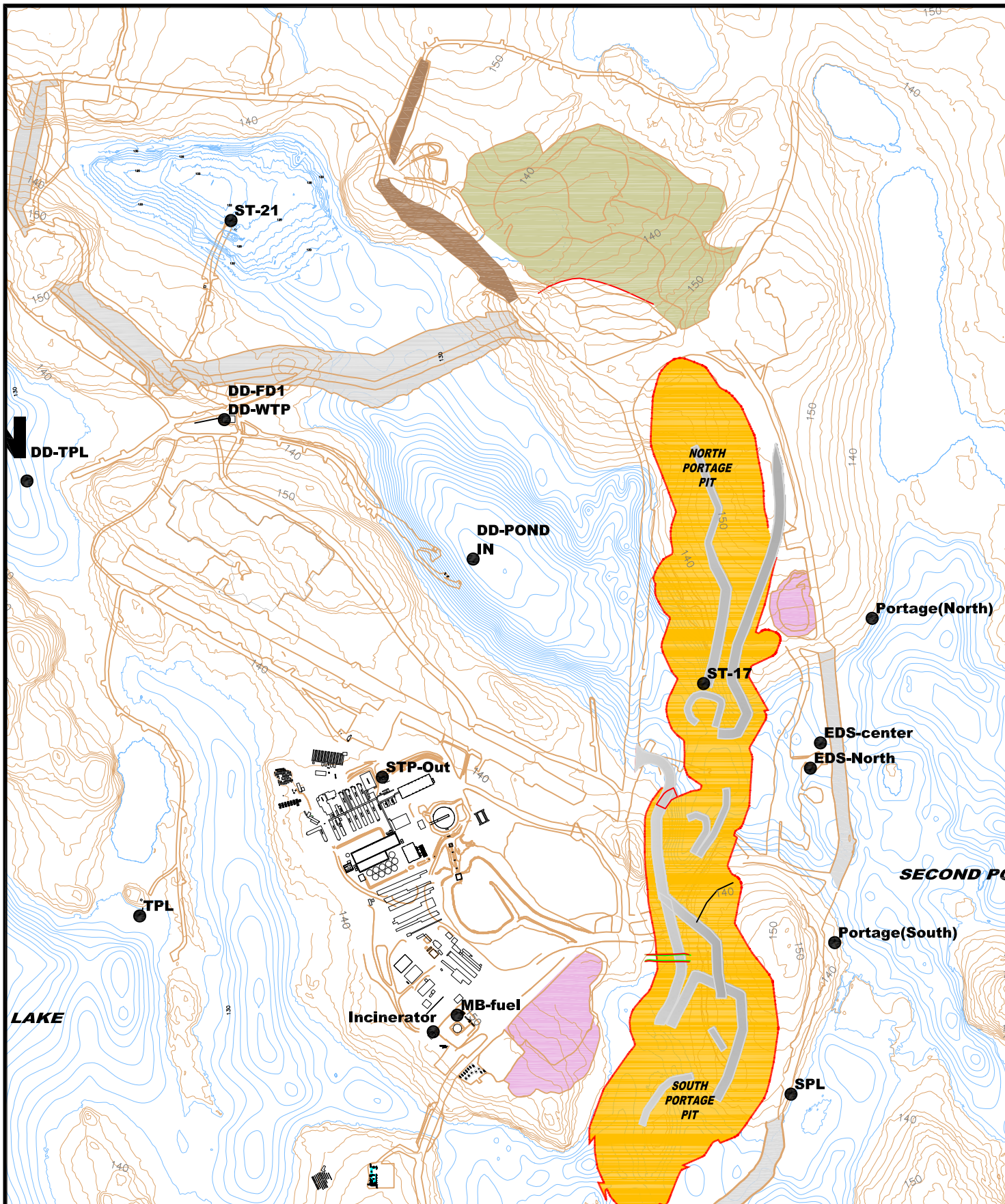


RECEIVED

By Licensing Administrator at 11:18 am, May 06, 2011

Figures



REV	DATE	DESCRIPTION	BY
REVISIONS			
<small>THE INFORMATION HERE ON IS THE PROPERTY OF AGNICO-EAGLE LTD. AND MUST BE RETURNED UPON REQUEST. WITHOUT WRITTEN PERMISSION, ANY COPYING TRANSMITTAL TO OTHERS AND ANY USE, EXCEPT THAT FOR WHICH IT IS LOANED ARE PROHIBITED. © AGNICO-EAGLE LTD.</small>			



TITLE AGNICO-EAGLE - MEADOWBANK DIVISION Meadowbank Mine Site Sampling Location			
SCALE NTS		DATE 25/03/2011	
DRAWN BY P. DAUDELIN		SHEET 1 / 1	
APPROVED BY			
DRAWING NO.			REVISION

REVISIONS

THE INFORMATION HERE ON IS THE PROPERTY OF AGNICO-EAGLE LTD. AND MUST BE RETURNED UPON REQUEST.
 WITHOUT WRITTEN PERMISSION, ANY COPYING TRANSMITTAL, TO OTHERS AND ANY USE EXCEPT THAT FOR WHICH IT IS LOANED ARE PROHIBITED.
 © AGNICO-EAGLE LTD.



TITLE			
AGNICO-EAGLE - MEADOWBANK DIVISION			
EEM Receiving Environment Sampling Location			
SCALE		DATE	
NTS		25/03/2011	
DRAWN BY			SHEET
P. DAUDELIN			1 / 1
APPROVED BY			
DRAWING NO.		REVISION	

