

## **Appendix A2**

---

### **2015 Annual Report Amaruq Exploration Access Road**

---



**AMARUQ AND MEADOWBANK  
EXPLORATION PROJECTS**

**Addendum 2015 Annual Report**

**Prepared for:**  
Nunavut Impact Review Board

**Prepared by:**  
Agnico Eagle Mines Limited

## DOCUMENT CONTROL

Version	Date (YMD)	Section	Page	Comment
1	2016/03/10	All	All	

Prepared By: Meadowbank Environment Department

Approved By: *David Frenette*  
*Environmental Coordinator*

## SECTION 1. ADDENDUM ANNUAL REPORT

---

*As part of this addendum, you will find below information relating to the 2015 exploration activities as requested by NIRB file #11EN010.*

*Agnico Eagle Mines Limited's Amaruq Exploration Sub-Project is located 50 kilometres (km) NNW of its Meadowbank Gold Mine in Nunavut. The intent of the Amaruq Exploration Project is to explore its mineral lease and claims for potential ore deposits. An exploration camp was established to undertake geological, geochemical, and/or geophysical exploration. Diamond drilling is also being used in exploring promising areas on the mineral lease and claim block.*

*Agnico Eagle Mines Limited's Meadowbank Exploration Sub-Project camp is located near Third Portage Lake adjacent to km 100 on the all-weather access road (AWAR) between the hamlet of Baker Lake and the Meadowbank mine site. In 2014, trailers located at the Meadowbank exploration camp were prepared for transportation over the winter road to the Amaruq site. These were moved early in 2015. The remaining infrastructure at the Meadowbank Exploration Project camp remains in place.*

*Based on November 4<sup>th</sup>, 2015 decision, the NIRB recommended that modifications be made regarding monitoring and reporting requirements. The report will now include the following information:*

1. The Proponent shall include within its annual report for the Meadowbank Gold Project (NIRB File No. 03MN107), a comprehensive annual report of the activities undertaken as authorized by the Board for File No. 11EN010 to date. The annual report must contain at least the following information:

a. A summary of activities undertaken for the year, including:

i. a map showing the approximate location of drill sites;

- *In 2015, 425 holes were drilled by Agnico Eagle Mines at the Amaruq project and 116 holes were drilled in the Meadowbank area (see Figure 1-1). All drilling areas were managed in such a manner as to reduce at minimum our environmental footprint. Drill*

hole reclamation was completed during the 2015 drilling program. Some drillings on ice were conducted during this campaign, but most of the drillings were carried out on land.

- A winter access between the Meadowbank mine and the Amaruq project was used in 2015 to transport material and equipment. The winter access used was mostly the one located on the west side of figure 1-1 and the majority of this access was located on lakes. Part of the material, equipment and workers were transported by helicopter and Twin Otter airplane.

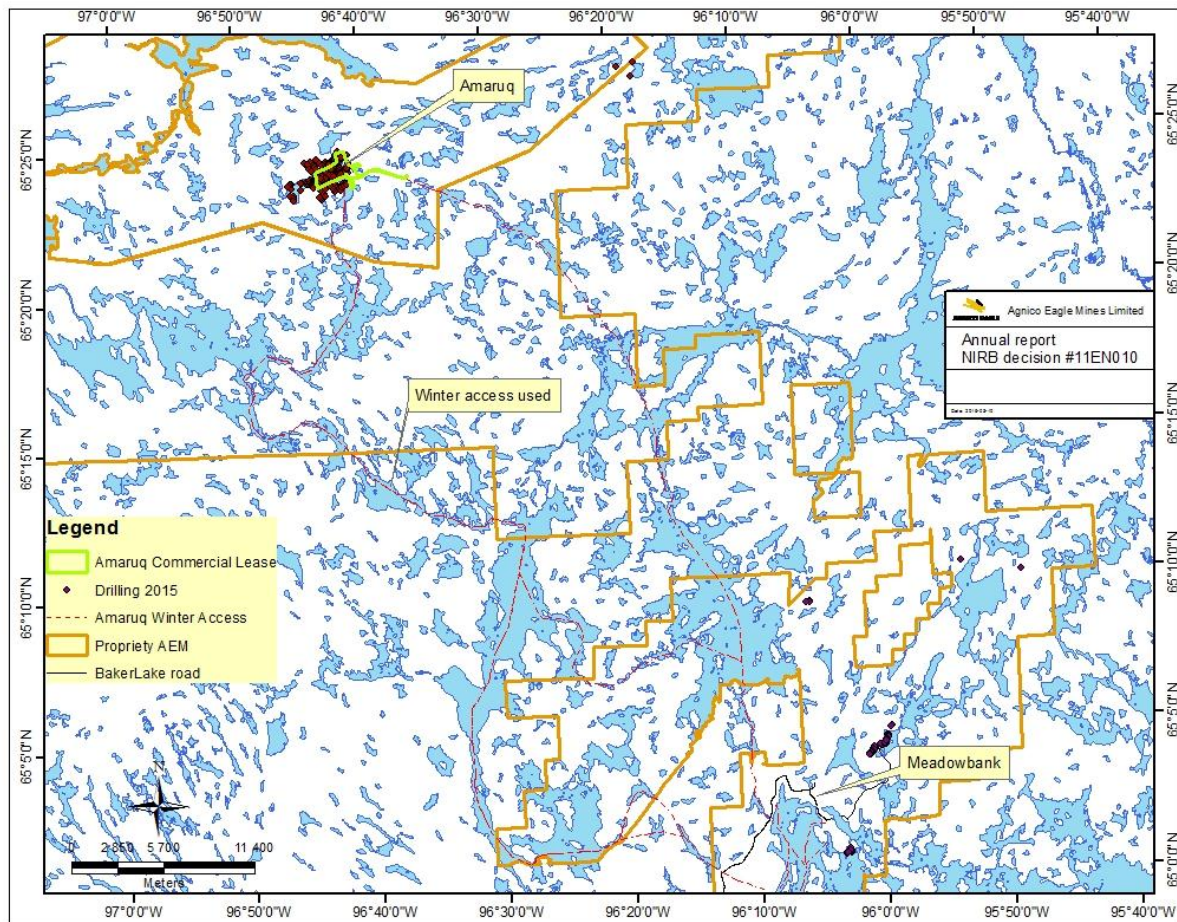


Figure 1-1: AEM 2015 Drilling Program Locations and winter access

ii. a map showing the location of the fuel cache;

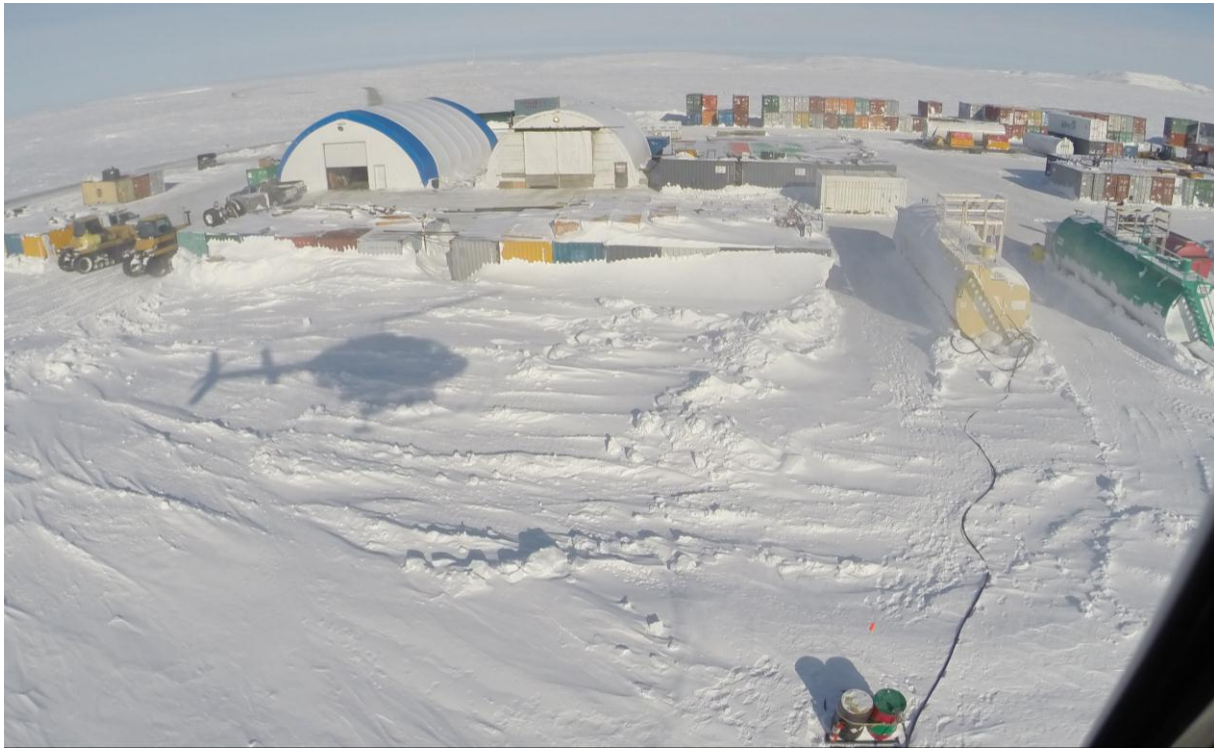
*Agnico Eagle Mines Limited's Exploration division has 2 fuel storage locations related to the NIRB decision #11EN010. One is located at the Meadowbank exploration camp and contains two 75 000 liters double walled tanks that are used to store diesel and jet fuel. The main fuel storage is located at the Amaruq exploration camp and will have a capacity of 1 750 000 liters of diesel and jet fuel.*

iii. site photos;



Amaruq camp, October 2015





Exploration Camp, March 2016

b. A work plan for the following year, including any progressive reclamation work undertaken;

- *Work plans submitted to the Kivalliq Inuit Association regarding the Amaruq and Meadowbank areas can be found in Appendix A.*

c. A summary of community consultations undertaken throughout the year, providing copy of materials presented to community members, a description of issues and concerns raised, discussions with community members and advice offered to the company as well as any follow-up actions that were required or taken to resolve any concerns expressed about the project proposal;

- *This information was included in the application submitted to the NIRB related to the construction of the road and since the new NIRB decision was received by the end of the year, on November 4<sup>th</sup>, 2015, no new information regarding this subject is added in the 2015 report.*

d. Summary of the consultation conducted with Government of Nunavut biologists if any and any relevant outcomes including revisions or alterations to the timing of project activities;

- *This information was included in the application submitted to the NIRB related to the construction of the road and since the new NIRB decision was received by the end of the year, on November 4<sup>th</sup>, 2015, no new information regarding this subject is added in the 2015 report.*

e. Summary of follow-up consultation with Fisheries and Oceans Canada (DFO) regarding the final construction designs and documents requested by DFO and any recommendations issued by DFO. The summary should include a summary of all available best management practices.

- *The final documents were submitted to DFO in December 2015, so no summary is available for 2015.*

f. A discussion of issues related to wildlife and environmental monitoring, including the number of cease-work orders required as a result of proximity to caribou;

- *The road construction authorizations were received by the end of 2015 and the construction will start only in 2016.*

g. An analysis of the effectiveness of mitigation measures for wildlife;

- *The road construction authorizations were received by the end of 2015 and the construction will start only in 2016.*

h. A brief summary of Wildlife Monitoring and Mitigation Plan (WMMP) results including the wildlife log and record of observations as well as any mitigation actions that were undertaken;

- *The road construction authorizations were received by the end of 2015 and the construction will start only in 2016.*
- *Wildlife monitoring logs related to the mineral exploration works can be found in Appendix B.*

i. Summary of any heritage sites encountered during the project activities and any follow-up action or reporting required as a result. The summary should include a map noting the sites encountered; and,



- *The road construction authorizations were received by the end of 2015 and the construction will start only in 2016.*

j. A summary of how the Proponent has complied with conditions contained within this Screening Decision, and all conditions as required by other authorizations associated with the project proposal.

- *Since the road construction authorizations were received by the end of 2015 and the construction will start only in 2016, the compliance to the associated conditions will be discussed in the 2016 annual report.*
- *Conditions included in the authorizations received from the different organizations were compiled in compliance tables, and people responsible for the environment on site will conduct frequent compliance inspections to ensure the respect of these conditions. Meetings and postings are also methods used to share the information related to our obligations and to ensure they are respected by every worker.*

## **APPENDIX A**

### **2016 Work Plans**

---

*Amaruq Exploration Project (Lease KVL312C03, Lease KVCL314C01)*

*Meadowbank Exploration Project (Lease KVCL303H305)*



**AGNICO EAGLE**

AMARUQ GOLD PROJECT

**2016 Work Plan**

Land Use Permit  
KVL312C03

Prepared by:

**Agnico Eagle Mines Limited, Exploration Division**

January 2016

Submitted to:

**Kivalliq Inuit Association**

## Table of content

<b>1. Location</b>	3
<b>2. Proponent</b>	3
<b>3. Land Use Authorization</b>	3
<b>4. Permitting Summary</b>	4
<b>5. Equipment and Contractors</b>	5
<b>6. Proposed Activities under land use permit KVL312C03</b>	5
<b>7. Areas of Activity</b>	5
<b>8. Period of Land Use Operations, 2016</b>	6
<b>9. Environmental Management</b>	6
Figure 1: Drilling area	8

## **1. Location**

Agnico Eagle Mines Limited (AEM) signed an exploration agreement with the Nunavut Tunngavik Inc. in January 2013 for the Amaruq property. This property is located approximately 50 km northwest of the Meadowbank mine and 125 km north of the Baker Lake community. The mineral exploration seeks gold mineral deposits. Drilling on this property began during the summer 2013 with helicopter support.

Agnico Eagle started the installation of an exploration camp during the summer 2014 and continued the construction of the camp during 2015. The Land Use Permit KVL312C03 authorizes exploration works such as geophysical surveys, prospection and diamond drilling on the propriety located on Inuit Own Land (IOL).

## **2. Proponent**

**Agnico Eagle Mines Ltd.**

Contact :

**David Frenette**

Environmental Coordinator

C.P. 87

765 Chemin de la mine Goldex

Val-d'Or, Quebec, J9P4N9

[david.frenette@agnicoeagle.com](mailto:david.frenette@agnicoeagle.com)

## **3. Land Use Authorization**

This 2016 work plan covers the proposed activities for the Amaruq Gold Project under the land use permit KVL312C03. Activities described in this work plan are authorized by various authorizing agencies. The Amaruq Gold Project is located on Inuit Owned Land administered by the Kivalliq Inuit Association.

#### 4. Permitting Summary

The following table summarizes licences and permits issued for the Amaruq Gold Project.

Table 1: Authorization summary

Licence number	Details	Work authorised	Issued by	Status
KVCL303H305	Exploration lease	Meadowbank exploration and camp	KIA	Active
KVL312C03	Land use permit, staking, prospection, drilling	Amaruq exploration on IOL	KIA	Active
KVRW11F01	Land use permit, winter road	Amaruq winter road on IOL, including alternative winter road	KIA	Active
KVCL314C01	Commercial lease	Amaruq camp and infrastructures related	KIA	Active
KVCA15Q01	Quarry permit	Amaruq eskers 7, 7B, 7C on IOL	KIA	Active
KVCA15Q02	Quarry permit	Amaruq exploration road, eskers on IOL	KIA	Active
KVRW15F01	Right of way, exploration road	Amaruq road on IOL	KIA	Active
11EN010	Screening decision	Exploration works and Amaruq exploration road	NIRB	Active
N2013F0030	Land use permit, winter road	Amaruq winter road on crown land including alternative winter road	AANDC	Active
066H/8-02-1	Lease for exploration road	Amaruq exploration road on crown land	AANDC	Pending
066H/8-01-1	Lease for exploration road quarries	Amaruq exploration road, eskers on crown land	AANDC	Pending
2BE-MEA1318	Water license for exploration projects Meadowbank and Amaruq	Meadowbank and Amaruq exploration projects	NWB	Active
8BE-AEA1325	Water licence, Amaruq exploration road	Amaruq exploration road	NWB	Active



## **5. Equipment and Contractors**

Agnico Eagle has contracted Orbit Garant for drilling services. Up to ten (10) diamond drills are planned to be in operation in 2016. For helicopter support, Agnico Eagle has contracted Helicopter Transport Services; three (3) helicopters are planned to be on site between January and November. Material, fuel and equipment transport between Meadowbank and Amaruq will be done using tracked tractors by Peter Expediting Ltd. based at Baker Lake and by M&T which is based at Rankin Inlet.

### **Major Contractors**

Diamond Drilling	Orbit Garant Drilling	Val-d'Or, QC
Helicopter	HTS	Carp, On
Expediting	Peter Expediting	Baker Lake, Nu
Expediting	M&T	Rankin Inlet, Nu

## **6. Proposed Activities under land use permit KVL312C03**

1. Material, equipment and fuel will be transported with tracked tractors between January and May.
2. Drilling is planned to start in February 2016 and up to 10 drills will be in operation in 2016. The drilling is planned to finish by October.
3. Prospecting, mapping and geophysical surveying could be conducted on the entire property.

## **7. Areas of Activity**

Most of the diamond drilling will target the "Whale Tail", "Mammoth", "I", "V", and "R" areas. Prospecting and mapping could be conducted on the entire property. Exploration drilling will be conducted inside the area shown on the figure 1.

## **8. Period of Land Use Operations, 2016**

### **January - May:**

- Material, equipment and fuel transportation with the tracked tractors.

### **February - October:**

- Diamond drilling, up to 10 drills in operation.

### **June - September**

- Prospection and geophysical surveys.

## **9. Environmental Management**

### **Waste management**

Details are presented in the “Amaruq waste management plan” and this is a summary:

- Putrescible waste such as paper, food packaging, and food waste will be incinerated.
- Untreated wood could be incinerated.
- Scrap metal and used tires will be stocked in containers and transported to southern facilities to be recycled.
- Non-hazardous, solid “inert” waste (wood, plastics, glass) will be disposed of in an approved landfill or segregated and disposed of in facilities in the south.
- All hazardous wastes and waste items that cannot be incinerated or landfilled will be securely packaged and sent to a proper treatment facility.
- Prior to disposal, the hazardous waste will be properly packaged, labeled, stored and manifested in a Transportation of Dangerous Goods (TDG) approved shipping container; the container will have the appropriate hazardous waste labels.
- Sewage: Pacto toilets will not be used since the water toilets and the Waste Water Treatment System (Bionest) are in operation. If the Pacto toilets must be used, the waste coming from them will be incinerated. The waste coming from the water toilets will be directed in the Bionest systems and treated before being released into the environment. The grey water will also be treated in the Bionest system and then returned in the environment.

### **Fuel Storage**

Fuel at Amaruq will be mostly stored in double-walled fuel tanks. 32 x 50 000 liter tanks and 2 x 100 000 liter tanks will be used at the Amaruq site. Part of the fuel, mainly jet fuel, could also be stored in 205 liter drums located in a secondary containment. Agnico Eagle will also retain some gasoline in barrels for the operation of snowmobiles and small pumps (approximately 50 barrels, as needed).

### **Spill contingency**

A Spill Contingency Plan has been developed for the exploration projects, and designates lines of authority and responsibility, and establishes proper reporting and detailed action plans in the event of a spill. This plan is applicable to all AEM employees and any contractors associated with the AEM exploration projects

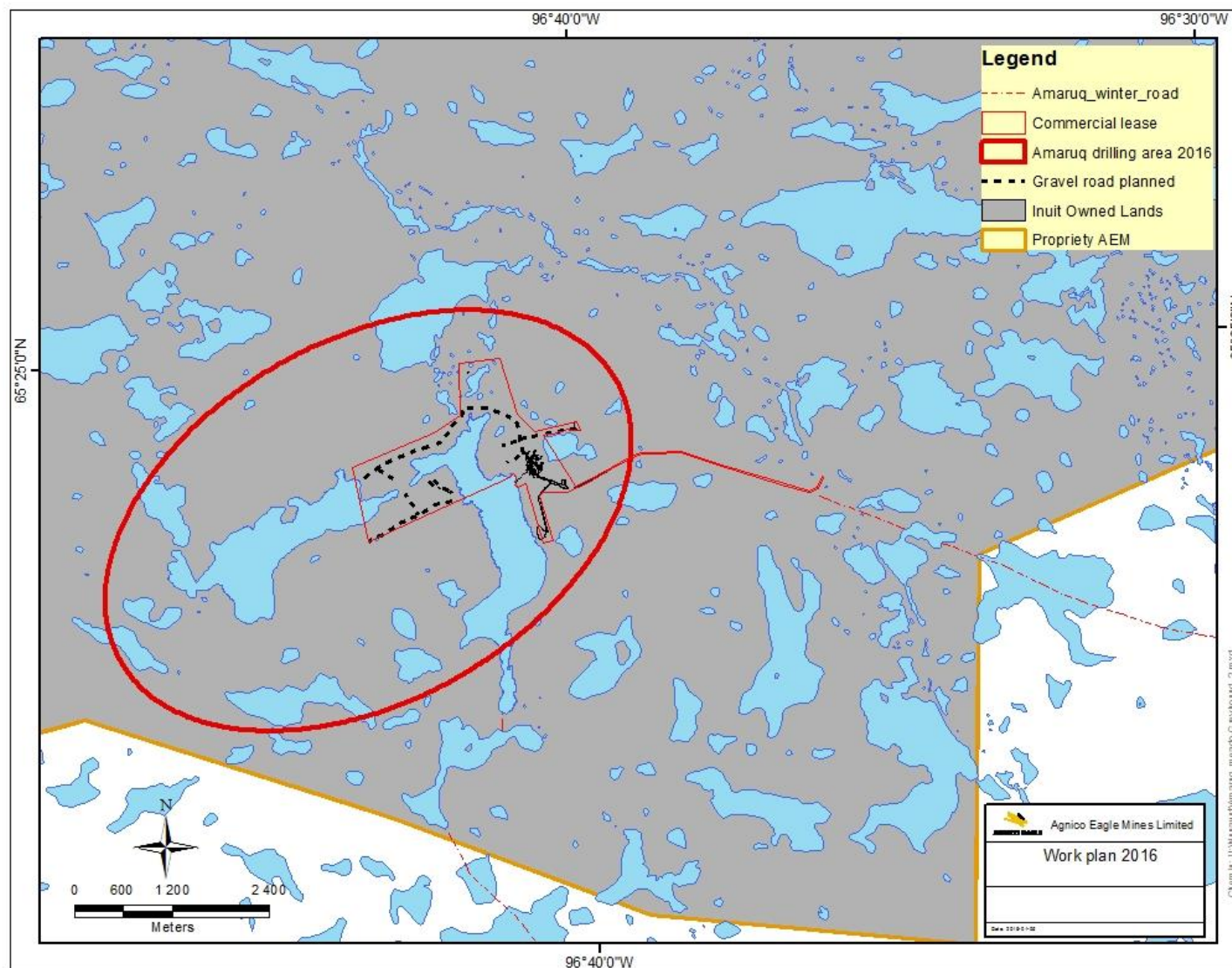
### **Caribou protection**

To limit the impact on the caribou, AEM will apply the protection measures that are described in the Keewatin Regional Land Use Plan and also in the Wildlife Protection and Response Plan. The protection measures include avoidance of some areas during certain defined periods and the Wildlife Protection and Response Plan describes procedures to apply when caribous are approaching an exploration area.

### **Inuit Heritage**

To ensure Inuit heritage protection AEM conducts annual archaeological works on various exploration sites and these works are permitted by the Government of Nunavut. These works include office and field investigations conducted by archaeologists to find, identify and report archaeological sites. Annual reports are submitted to the Government of Nunavut and include details of the completed investigations. These investigations help AEM to reduce the risk of damaging an archeological site during its exploration works. During a first stage exploration project, archaeological sites are protected with protection buffers that are established with the archaeologist and in compliance with the regulations.

Figure 1: Drilling area





# **AGNICO EAGLE**

## **AMARUQ GOLD PROJECT**

### **2016 Work Plan**

Commercial lease  
KVCL314C01

Prepared by:

**Agnico Eagle Mines Limited, Exploration Division**

January 2016

Submitted to:

**Kivalliq Inuit Association**

## Table of content

<b>1. Location</b>	3
<b>2. Proponent</b>	3
<b>3. Land Use Authorization</b>	3
<b>4. Permitting Summary</b>	4
<b>5. Equipment and Contractors</b>	5
<b>6. Proposed Activities</b>	5
<b>7. Areas of Activity</b>	6
<b>8. Period of Land Use Operations, 2016</b>	6
<b>9. Environmental Management</b>	6
Figure 1: Drilling area	9
Figure 2: Commercial lease	10
Figure 3: Camp plan	11



### **1. Location**

Agnico Eagle Mines Limited (AEM) signed an exploration agreement with the Nunavut Tunngavik Inc. in January 2013 for the Amaruq property. This property is located approximately 50 km northwest of the Meadowbank mine and 125 km north of the Baker Lake community. The mineral exploration seeks gold mineral deposits. Drilling on this property began during the summer 2013 with helicopter support.

Agnico Eagle started the installation of an exploration camp during the summer 2014 and continued the construction of the camp during 2015. The Commercial Lease KVCL314C01 authorizes exploration works, exploration camp operations and associated activities.

### **2. Proponent**

**Agnico Eagle Mines Ltd.**

Contact :

**David Frenette**

Environmental Coordinator

C.P. 87

765 Chemin de la mine Goldex

Val-d'Or, Quebec, J9P4N9

[david.frenette@agnicoeagle.com](mailto:david.frenette@agnicoeagle.com)

### **3. Land Use Authorization**

This 2016 work plan covers the proposed activities for the Amaruq Gold Project under the lease KVCL314C01. Activities described in this work plan are authorized by various authorizing agencies. The Amaruq Gold Project is located on Inuit Owned Land administered by the Kivalliq Inuit Association.

#### 4. **Permitting Summary**

The following table summarizes Licences and Permits related to the Amaruq Gold Project.

Table 1: Authorization summary

##### Licences and Permits Amaruq project

Licence number	Details	Work authorised	Issued by	Status
KVCL303H305	Exploration lease	Meadowbank exploration and camp	KIA	Active
KVL312C03	Land use permit, staking, prospection, drilling	Amaruq exploration on IOL	KIA	Active
KVRW11F01	Land use permit, winter road	Amaruq winter road on IOL, including alternative winter road	KIA	Active
KVCL314C01	Commercial lease	Amaruq camp and infrastructures related	KIA	Active
KVCA15Q01	Quarry permit	Amaruq eskers 7, 7B, 7C on IOL	KIA	Active
KVCA15Q02	Quarry permit	Amaruq exploration road, eskers on IOL	KIA	Active
KVRW15F01	Right of way, exploration road	Amaruq road on IOL	KIA	Active
11EN010	Screening decision	Exploration works and Amaruq exploration road	NIRB	Active
N2013F0030	Land use permit, winter road	Amaruq winter road on federal land including alternative winter road	AANDC	Active
066H/8-02-1	Lease for exploration road	Amaruq exploration road on crown land	AANDC	Pending
066H/8-01-1	Lease for exploration road quarries	Amaruq exploration road, eskers on crown land	AANDC	Pending
2BE-MEA1318	Water license for exploration projects Meadowbank and Amaruq	Meadowbank and Amaruq exploration projects	NWB	Active
8BE-AEA1325	Water licence, Amaruq exploration road	Amaruq exploration road	NWB	Active

## **5. Equipment and Contractors**

Agnico Eagle has contracted Orbit Garant for drilling services. Up to ten (10) diamond drills are planned to be in operation in 2016. For helicopter support, Agnico Eagle has contracted Helicopter Transport Services; three (3) helicopters will be on site between January and November. Material, fuel and equipment transport between Meadowbank and Amaruq will be done using tracked tractors by Peter Expediting Ltd. based at Baker Lake and by M&T which is based at Rankin Inlet.

### **Major Contractors**

Diamond Drilling	Orbit Garant Drilling	Val-d'Or, QC
Helicopter	HTS	Carp, On
Expediting	Peter Expediting	Baker Lake, Nu
Expediting	M&T	Rankin Inlet, Nu

## **6. Proposed Activities**

1. The Amaruq camp will be open all year long in 2016, but will be in care and maintenance from November 2016 to January 2017.
2. Installation of an additional Waste Water Treatment System Bionest.
3. Installation of 17 additional 50 000 litre double-wall fuel tanks.
4. Construction of camp site gravel pads, construction of small exploration access roads (as shown on figure 2).
5. The majority of the Meadowbank exploration camp was transported to Amaruq in 2015. The gravel pad of the camp continues to be used as a material transfer site for the Amaruq project.
6. Material, equipment and fuel will be transported with tracked tractors between January and May.
7. Drilling is planned to start in February 2016 and up to 10 drills will be in operation. The drilling is planned to finish by October.

8. Prospecting, mapping and geophysical surveying could be conducted on the entire property.

## **7. Areas of Activity**

Most of the diamond drilling will target the “Whale Tail”, “Mammoth”, “I”, “V”, and “R” areas. Prospecting and mapping could be conducted on the entire property. Exploration drilling will be conducted inside the area shown on the figure 1.

## **8. Period of Land Use Operations, 2016**

### **February to November:**

- Camp maintenance, installation of an additional Waste Water Treatment System Bionest, installation of 17 additional 50 000 litre double-wall fuel tanks, gravel pad construction on the camp site, construction of small exploration access roads (as shown on figure 2).

### **January- May:**

- Material, equipment and fuel transportation with the tracked tractors.

### **February - October:**

- Diamond drilling, up to 10 drills in operation.

### **June - September**

- Prospection and geophysical surveys.

## **9. Environmental Management**

### **Waste management**

Details are presented in the “Amaruq waste management plan” and this is a summary:

- Putrescible waste such as paper, food packaging, and food waste will be incinerated.
- Untreated wood could be incinerated.

- Scrap metal and used tires will be stocked in containers and transported to southern facilities to be recycled.
- Non-hazardous, solid “inert” waste (wood, plastics, glass) will be disposed of in an approved landfill or segregated and disposed of in facilities in the south.
- All hazardous wastes and waste items that cannot be incinerated or landfilled will be securely packaged and sent to a proper treatment facility.
- Prior to disposal, the hazardous waste will be properly packaged, labeled, stored and manifested in a Transportation of Dangerous Goods (TDG) approved shipping container; the container will have the appropriate hazardous waste labels.
- Sewage: Pacto toilets will not be used since the water toilets and the Waste Water Treatment System (Bionest) are in operation. If the Pacto toilets must be used, the waste coming from them will be incinerated. The waste coming from the water toilets will be directed in the Bionest systems and treated before being released into the environment. The grey water will also be treated in the Bionest system and then returned in the environment.

### **Fuel Storage**

Fuel at Amaruq will be mostly stored in double-walled fuel tanks. 32 x 50 000 liter tanks and 2 x 100 000 liter tanks will be used at the Amaruq site. Part of the fuel, mainly jet fuel, could also be stored in 205 liter drums located in a secondary containment. Agnico Eagle will also retain some gasoline in barrels for the operation of snowmobiles and small pumps (approximately 50 barrels, as needed).

### **Spill contingency**

A Spill Contingency and Response Plan has been developed for the exploration projects, and designates lines of authority and responsibility, and establishes proper reporting and detailed action plans in the event of a spill. This plan is applicable to all AEM employees and any contractors associated with the AEM exploration projects

### **Caribou protection**

To limit the impact on the caribou, AEM will apply the protection measures that are described in the Keewatin Regional Land Use Plan and also in the Wildlife Protection and Response Plan developed by AEM. The protection measures include avoidance of some areas during certain

defined periods and the Wildlife Protection and Response Plan describes procedures to apply when caribous are approaching an exploration area.

### **Inuit Heritage**

To ensure Inuit heritage protection AEM conducts annual archaeological works on various exploration sites and these works are permitted by the Government of Nunavut. These works include office and field investigations conducted by archaeologists to find, identify and report archaeological sites. Annual reports are submitted to the Government of Nunavut and include details of the completed investigations. These investigations help AEM to reduce the risk of damaging an archeological site during its exploration works. During a first stage exploration project, as for this permit application, archaeological sites are protected with protection buffers that are established with the archaeologist and in compliance with the regulations.



Figure 1: Drilling area

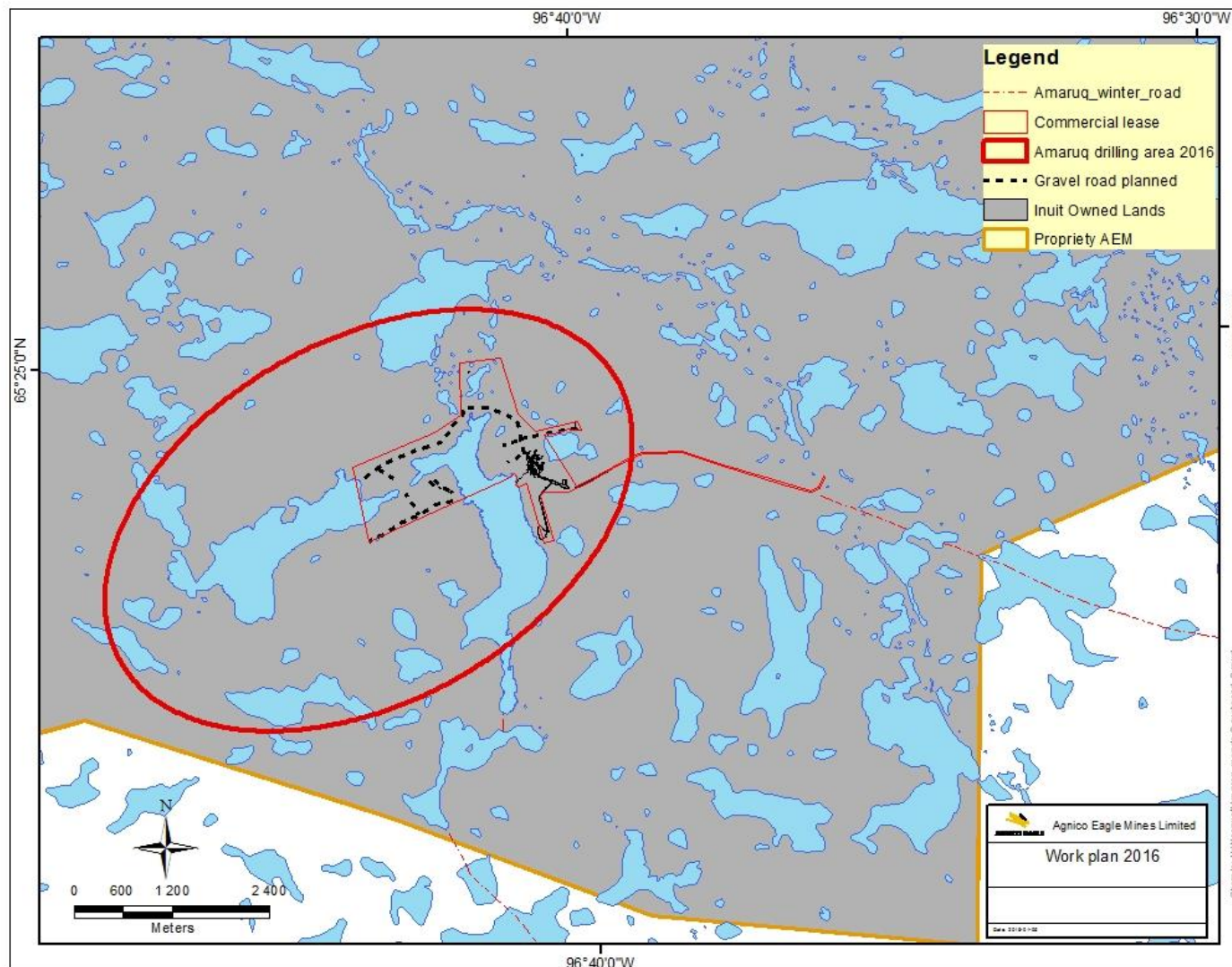




Figure 2: Commercial lease

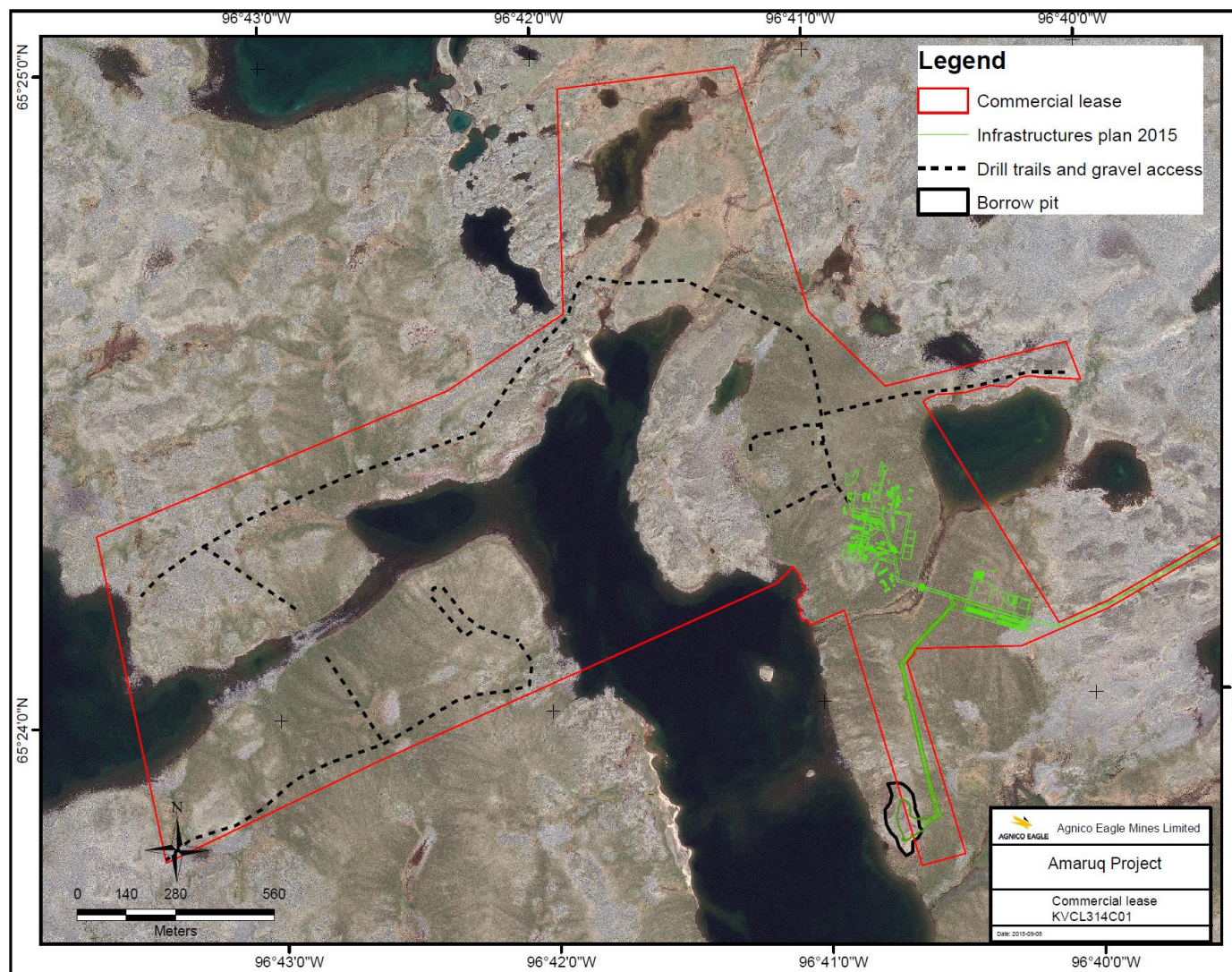
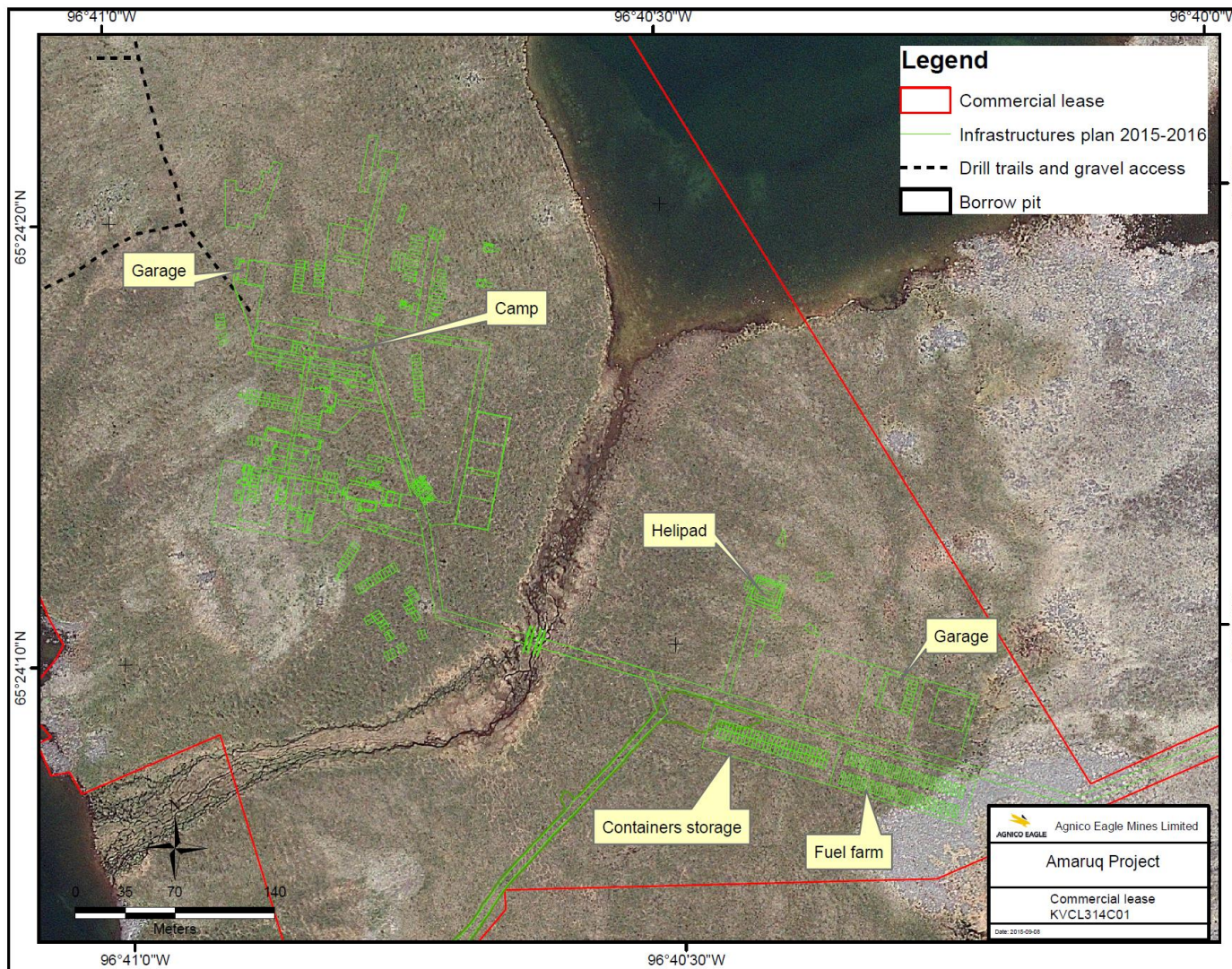




Figure 3: Camp plan





# **AGNICO EAGLE**

Meadowbank Exploration Camp Site

## **2016 Work Plan**

Exploration lease  
KVCL303H305

Prepared by:

**Agnico Eagle Mines Limited, Exploration Division**

January 2016

Submitted to:

**Kivalliq Inuit Association**

**Table of content**

<b>1. Location</b>	3
<b>2. Proponent</b>	3
<b>3. Land Use Authorization</b>	3
<b>4. Permitting Summary</b>	4
<b>5. Equipment and Contractors</b>	5
<b>6. Proposed Activities</b>	5
<b>7. Environmental Management</b>	5

## **1. Location**

The Meadowbank property is located 70 km north of the hamlet of Baker Lake and the exploration camp site is located on the west side of the Third Portage Lake near the Meadowbank mine.

The majority of the Meadowbank exploration camp was transported to Amaruq in 2015 where most of the exploration activities will be conducted in 2016. Some buildings remain at the Meadowbank Exploration camp site and the site continues to be used as a material transfer site for the Amaruq project.

## **2. Proponent**

**Agnico Eagle Mines Ltd.**

Contact :

**David Frenette**

Environmental Coordinator

C.P. 87

765 Chemin de la mine Goldex

Val-d'Or, Quebec, J9P4N9

[david.frenette@agnicoeagle.com](mailto:david.frenette@agnicoeagle.com)

## **3. Land Use Authorization**

This 2016 work plan covers the proposed activities under the lease KVCL303H305. Activities described in this work plan are authorized by various authorizing agencies. The Meadowbank exploration camp site is located on Inuit Owned Land administered by the Kivalliq Inuit Association.



#### 4. **Permitting Summary**

The following table summarizes Licences and Permits related to the Amaruq and Meadowbank Gold Project.

Table 1: Authorization summary

Licence number	Details	Work authorised	Issued by	Status
KVCL303H305	Exploration lease	Meadowbank exploration and camp	KIA	Active
KVL312C03	Land use permit, staking, prospection, drilling	Amaruq exploration on IOL	KIA	Active
KVRW11F01	Land use permit, winter road	Amaruq winter road on IOL, including alternative winter road	KIA	Active
KVCL314C01	Commercial lease	Amaruq camp and infrastructures related	KIA	Active
KVCA15Q01	Quarry permit	Amaruq eskers 7, 7B, 7C on IOL	KIA	Active
KVCA15Q02	Quarry permit	Amaruq exploration road, eskers on IOL	KIA	Active
KVRW15F01	Right of way, exploration road	Amaruq road on IOL	KIA	Active
11EN010	Screening decision	Exploration works and Amaruq exploration road	NIRB	Active
N2013F0030	Land use permit, winter road	Amaruq winter road on crown land including alternative winter road	AANDC	Active
066H/8-02-1	Lease for exploration road	Amaruq exploration road on crown land	AANDC	Pending
066H/8-01-1	Lease for exploration road quarries	Amaruq exploration road, eskers on crown land	AANDC	Pending
2BE-MEA1318	Water license for exploration projects Meadowbank and Amaruq	Meadowbank and Amaruq exploration projects	NWB	Active
8BE-AEA1325	Water licence, Amaruq exploration road	Amaruq exploration road	NWB	Active

## **5. Equipment and Contractors**

Material, fuel and equipment transport between Meadowbank and Amaruq will be done using tracked tractors by Peter Expediting Ltd. based at Baker Lake and by M&T which is based at Rankin Inlet.

### **Major Contractors**

Expediting	Peter Expediting	Baker Lake, Nu
Expediting	M&T	Rankin Inlet, Nu

## **6. Proposed Activities**

1. The majority of the Meadowbank exploration camp was transported to Amaruq in 2015. The gravel pad of the camp continues to be used as a material transfer site for the Amaruq project.
2. Material, equipment and fuel will be transported with tracked tractors between January and May from the Meadowbank exploration camp site to the Amaruq camp. Close to 400 loads are planned to be transported.
3. No drilling is planned under this lease in 2016.

## **7. Environmental Management**

### **Waste management**

Details are presented in the “Waste management plan” and this is a summary:

- Putrescible waste such as paper, food packaging, and food waste will be incinerated.
- Untreated wood could be incinerated.
- Scrap metal and used tires will be stocked in containers and transported to southern facilities to be recycled.
- Non-hazardous, solid “inert” waste (wood, plastics, glass) will be disposed of in an approved landfill or segregated and disposed of in facilities in the south.
- All hazardous wastes and waste items that cannot be incinerated or landfilled will be securely packaged and sent to a proper treatment facility.

- Prior to disposal, the hazardous waste will be properly packaged, labeled, stored and manifested in a Transportation of Dangerous Goods (TDG) approved shipping container; the container will have the appropriate hazardous waste labels.
- Sewage: The people working in the Meadowbank area will use the toilets and facilities at the Meadowbank mine.

### **Fuel Storage**

Fuel at the Meadowbank exploration camp site is stored in double-walled fuel tanks. 2 x 75 000 liter tanks are present and used. An electrical pump is used to transfer the fuel from the tanks to the vehicles and transport tanks. This fuel is mainly used by tracked tractors and to fill the transport tanks used to bring the fuel to the Amaruq camp site.

### **Spill contingency**

A Spill Contingency and Response Plan has been developed for the exploration projects, and designates lines of authority and responsibility, and establishes proper reporting and detailed action plans in the event of a spill. This plan is applicable to all AEM employees and any contractors associated with the AEM exploration projects

### **Caribou protection**

To limit the impact on the caribou, AEM will apply the protection measures that are described in the Keewatin Regional Land Use Plan and also in the Wildlife Protection and Response Plan developed by AEM. The protection measures include avoidance of some areas during certain defined periods and the Wildlife Protection and Response Plan describes procedures to apply when caribous are approaching an exploration area.

### **Inuit Heritage**

To ensure Inuit heritage protection AEM conducts annual archaeological works on various exploration sites and these works are permitted by the Government of Nunavut. These works include office and field investigations conducted by archaeologists to find, identify and report archaeological sites. Annual reports are submitted to the Government of Nunavut and include details of the completed investigations. These investigations help AEM to reduce the risk of damaging an archeological site during its exploration works. During a first stage exploration project, archaeological sites are protected with protection buffers that are established with the archaeologist and in compliance with the regulations.

## **APPENDIX B**

### **AEM 2015 Wildlife Monitoring, Amaruq Exploration**

---



## 2015 AMARUQ Exploration Camp Wildlife observation



Date	Time	Wildlife species	Number	Location	Behavior	Action taken
6/1/2015	4:50	Fox	1	Beside Bionest	Looking for food	Assure no food is available
6/2/2015	9:30	Artic Hare	1	Beside Orbit garage	Relax	None
6/21/2015	7:30	Wolf	1	Seacans area	Running towards camp	None
2015-06-31	6:00	Ptarmigan	2	Camp site	Relax	None
7/7/2015	14:00	Wolf	1	3km North camp	Running	Make noise
7/9/2015	9:00	Muskox	12	25 km North-East of the Camp	Nothing	None
7/14/2015	13:30	Caribou	1	IVR area	Walking	None
7/14/2015	15:20	Artic hare	1	IVR area	Running	None
7/15/2015	10:00	Caribou	1	IVR area	Walking	None
7/15/2015	14:00	Sik-sik	1	IVR area	Nothing	None
7/16/2015	20:00	Caribou	1	Near fuel farm	Walking	None
7/16/2015	9:00	Wolf	1	500m north of camp	Walking	None
7/18/2015		Muskox	1	Meadowbank river (20km east)	Walking	None
7/18/2015		Fox	2	Around drill #1	Walking	None
7/25/2015	3:00	Caribou	1	Creek south of camp	Walking	None
7/26/2015		Artic Hare	1	Garage orbit	Nothing	None
7/28/2015	7:00	Caribou	1	Creek south of camp	Walking	None
8/2/2015	6:00	Ptarmigan	5	Camp site	Walking	None
8/27/2015	7:30	Caribou	1	Camp site	Walking	None
8/28/2015	5:00	Artic Hare	1	Camp site	Eating	None
8/28/2015		Artic Hare	2	Camp site	Walking	None
8/29/2015	4:00	Ptarmigan	3	Geo tent	Eating	None
9/2/2015	All time	Caribou	15	Escher Area	Eating	None
9/6/2015	All day	Caribou	20	Around drilling area	Eating	None
9/11/2015	All week	Caribou	10	Camp site	Eating	None
9/11/2015	All week	Ptarmigan	15	Camp site	Eating	None
10/2/2015		Wolf	1	Around drill	Walking	None
2015-12-01	All week	Fox	1	Camp site	Walking	None
2015-12-21	11:00	Wolf	8	Camp site	Running	None