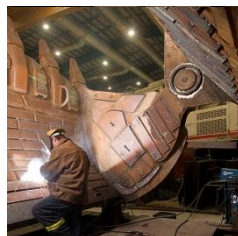
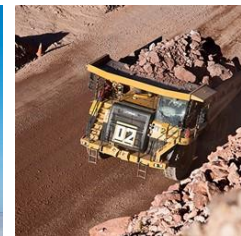


Appendix J3

2015 AWAR Community Meetings and Presentation



AGNICO EAGLE



ENVIRONMENT PRESENTATION

Pujjuut - Erika - Philip

2015

TRANSPORTATION OF DANGEROUS GOODS

SEA AND LAND

- **AEM TRANSPORTS BOTH SUPPLIES AND FUEL TO THE MEADOWBANK OPERATIONS VIA SEA AND LAND**
- **ALL DANGEROUS GOODS ARE HANDLED UNDER STRICT FEDERAL GOVERNMENT REGULATIONS**
- **EXAMPLES**
 - ✓ **DOUBLE HULLS ON SHIPS**
 - ✓ **DANGEROUS GOODS STORED IN WATER PROOF COMPARTMENTS**
 - ✓ **FOLLOW STRICT RULES**
 - ✓ **EMERGENCY RESPONSE PREPAREDNESS**



TRANSPORTATION OF DANGEROUS GOODS

SEA AND LAND

- **BOTH THE SHIPPERS AND AEM FOLLOW CERTAIN CODES TO SHOW THERE DUE DILLIGENCE**

- **THE PORT TERMINAL IN BEACANOUR QUEBEC FOLLOWS INTERANATIONAL MARITIME DANGEROUS GOODS CODE (I.M.D.G.)**
 - This provides proper stuff of sea cans to prevent disruption of product during transport
 - Proper storage of sea cans on the vessel ex water reactive products in dry cargo holds
 - Docking and mooring practices to prevent problems when on and off loading





ALL WEATHER ROAD

PROCEDURES FOR ROAD ACCESS

- Install a buggy whip on the ATV while at the AEM Gatehouse. The buggy whip must remain installed until the ATV returns to Baker Lake Gatehouse.
- ATV operators must also wear a safety vest while travelling on the road.





ALL WEATHER ROAD

PROCEDURES FOR ROAD ACCESS

- **AEM traffic has the right of way – the ATV must pull off the road when a vehicle is oncoming or approaching from behind and wait for that vehicle to pass before entering back onto the road.**





ALL WEATHER ROAD

PROCEDURES FOR ROAD ACCESS

- **Maximum speed is 50 km/hr**
- **All hunting activity must avoid cross shooting over the road, respect a safe zone along the road and no shooting around work area**
- **Return buggy whip and safety vest to Baker Lake Gatehouse**



ALL WEATHER ROAD

MOST IMPORTANT

- Health and safety is serious business. This could be your life we are trying to protect.
- Please report any incidents/accidents that occur on road to security gatehouse.





AGNICO EAGLE



QUESTIONS



AGNICO EAGLE



DUST SUPPRESSION

DUST SUPPRESSION

2014 FACTS

➤ 2014 Dust Suppression used:

- Around Meadowbank Site
- Between Meadowbank Site and Exploration Site
- From Baker Lake Security gate to AEM Marshalling area and Spud Barge
- Airstrip at Meadowbank
- Haul roads have dust suppression

DUST SUPPRESSION

ALL WEATHER ROAD

➔ Dust Study on AWPR:

- Results of the 2012-2014 AWAR dustfall studies have shown that there is more than a 2x reduction in dustfall from 50 m to 100 m on the downwind (most impacted) side of the AWAR
- 2015 AEM will continue dustfall studies
- Other programs under consideration for 2015.



AGNICO EAGLE



QUESTIONS

MIGRATION



MIGRATION

CARIBOU MIGRATION

- Road shut down October 23-27
- Road shut down November 25-26



MIGRATION

CONCERNS AND SOLUTIONS

➤ Concerns:

- AEM is not providing enough environmental presence during the migration

➤ Solution:

- The environment department will commit to providing more of a presence during future migrations



MIGRATION

CONCERNS AND SOLUTIONS

➤ Concerns:

➤ Suggested to have a local person from Baker Assist in monitoring of the roads during migration

➤ Solution:

➤ AEM has a local person that assist in monitoring of the roads during the migration and we also have a local person from Nunavut Environmental that assists with caribou surveys during the migration



MIGRATION

CONCERNS AND SOLUTIONS

➤ Concerns:

➤ Taking to long to close the road during migrations.

➤ Solution:

➤ AEM will commit to closer monitoring of the AWPR and will close the road at the first sign of caribou migration and will not open until it is completed





AGNICO EAGLE



QUESTIONS



AGNICO EAGLE



2015 PREDICTED ROAD CLOSURE

2015 PREDICTED ROAD CLOSURE

- Road will be closed more frequently in 2015 during the transportation of materials from the barge
- Mostly this will happen during the transportation of dangerous goods – this is to ensure the risk to all workers and any public using the road is eliminated.

2015 PREDICTED ROAD CLOSURE

➤ Each transporters has been certified in Transportation of Dangerous Goods as well they have a transportation of dangerous goods form that they must fill out which ensures the driver they know what they are transporting.

➤ Examples of dangerous goods:

- ☐ Lead Nitrate
- ☐ Nitric Acid
- ☐ Cyanide
- ☐ Ammonium Nitrate





AGNICO EAGLE



INTERNATIONAL CYANIDE MANAGEMENT CODE



INTERNATIONAL CYANIDE MANAGEMENT CODE

- **What is the International Cyanide Management Code (ICMC)?**
- **It is a international designation that can be achieved if a company transporting, handling, using cyanide follows all Environmental, health and safety, and proper management of cyanide to a standard that is acceptable throughout the world**



➤ Where all does this certification cover?

- An audit was preformed by members of the International Cyanide Management Institute. They review the entire process of the cyanide from the port of Bécancour in Québec, through Chesterfield Inlet, from the barge at Baker Lake, down the All weather private access road, all the way to Meadowbank. They also audited all the process of cyanide on the Meadowbank site including storage, milling, health and safety, environmental practices, closure planning, and emergency response.



INTERNATIONAL CYANIDE MANAGEMENT CODE

➤ **When does this start?**

➤ The audit was preformed in September 2014

➤ **Why is AEM doing this?**

➤ AEM wants everyone to know that they are doing all the correct practices when it comes to the use of Cyanide for its operation.



AGNICO EAGLE



QUESTIONS