



NCIS-046 (2018-06-26), looking SE from Sta. 2+680/-18 m. Removal of till material mixed with the UM rockfill of the capping (about 1 to 2 m thick along the slope) with an excavator from Sta. 2+760 m to 2+850 m (o.s. -35 to -17 m).



NCIS-047 (2018-06-26), looking N from Sta. 2+580/-35 m. Placement of a 0.5 m thick lift of coarse filter in the upstream slope from El. 150 m to 152 m with an excavator from Sta. 2+560 m to 2+640 m.



NCIS-048 (2018-06-26), looking SW from Sta. 1+120/-92 m. Placement of a 1.5 to 2 m thick (approx.) lift of UM rockfill from El. 148 m to El. 150 m (approx.) with a dozer from Sta. 1+125 m to 1+115 m (-92 m to -47 m).



NCIS-049 (2018-06-26), looking N from Sta. 2+870/-28 m. Removing of UM rockfill material from the capping with a dozer to level the surface to El. 150 m from Sta. 2+760 m to 2+850 m (o.s. -29 to -17 m).



NCIS-050 (2018-06-26), looking S from Sta. 1+230/-55 m. Compaction of the 1.5 to 2 m lift (approx.) of ultramafic (UM) rockfill at El. 150 m with a 10-tonne smooth-drum compactor with vibration (6 passes) between the haul truck traffic lane and the upstream slope from Sta. 1+220 to 1+130 m (o.s. -91 to -44 m).



NCIS-051 (2018-06-27), looking SE from Sta. 2+630/-34 m. Placement of a 0.5 m thick lift of coarse filter in the upstream slope from El. 150 m to 152 m with an excavator from Sta. 2+640 m to 2+815 m.



NCIS-052 (2018-06-27), looking SW from Sta. 1+120/-87 m. Placement of a 1.5 to 2 m thick (approx.) lift of UM rockfill from El. 148 m to El. 150 m (approx.) with a dozer from Sta. 1+115 m to 1+100 m (-107 m to -45 m).



NCIS-053 (2018-06-27), looking S from Sta. 2+840/-37 m. Removing of UM rockfill material from the capping with a dozer to level the surface to El. 152 m from Sta. 2+850 m to 2+980 m (o.s. -38 to -24 m).



NCIS-054 (2018-06-28), looking SE from Sta. 2+580/-31 m. Compaction of the 0.5 m lift (approx.) of coarse filter between El. 150 and 152 m with a 10-tonne smooth-drum compactor with vibration (4 passes) in the upstream slope from Sta. 2+560 m to 2+815 m.



NCIS-055 (2018-06-28), looking NE from Sta. 1+730/-42 m. Placement of a 0.5 m thick lift of fine filter over the coarse filter in the upstream slope from El. 150 m to 152 m with an excavator from Sta. 1+820 m to 1+595 m.



NCIS-056 (2018-06-28), looking S from Sta. 1+290/-39 m. Profiling of the upstream slope (3H:1V) from El. 148 to 150 m with an excavator from Sta. 1+340 m to 1+130 m.



NCIS-057 (2018-06-28), looking SW from Sta. 3+010/-15 m. Removing of UM rockfill material from the capping with a dozer to level the surface to El. 152 m from Sta. 2+980 m to 3+050 m (o.s. -30 to -20 m).



NCIS-058 (2018-06-29), looking S from Sta. 1+340/-34 m. Placement of a 0.5 m thick lift of coarse filter in the upstream slope from El. 148 m to 152 m with an excavator from Sta. 1+340 m to 1+270 m.



NCIS-059 (2018-06-29), looking S from Sta. 1+330/-34 m. Placement of a 1.5 to 2 m thick (approx.) lift of UM rockfill from El. 148 m to El. 150 m (approx.) with a dozer from Sta. 1+120 m to 1+100 m (-96 m to -60 m). The material is of good quality and is well graded.



NCIS-060 (2018-06-29), looking SW from Sta. 1+365/-35 m. Placement of a 2 m thick (approx.) lift of UM rockfill from El. 150 m to El. 152 m (approx.) with a dozer from Sta. 1+340 m to 1+320 m (-19 m to +16 m). The material is of good quality and is well graded.



NCIS-061 (2018-06-29), looking S from Sta. 1+365/-35 m. Compaction of the 0.5 m lift of coarse filter between El. 148 and 152 m with a 10-tonne smooth-drum compactor with vibration (4 passes) in the upstream slope from Sta. 1+340 m to 1+270 m.



NCIS-062 (2018-06-29), looking N from Sta. 1+525/-33 m. Placement of a 0.5 m thick lift of fine filter over the coarse filter in the upstream slope from El. 150 m to 152 m with an excavator from Sta. 1+330 m to 1+260 m and from Sta. 1+595 m to 1+550 m.



NCIS-063 (2018-06-30), looking SW from Sta. 1+200/-65 m. Placement of a 0.5 m thick lift of coarse filter in the upstream slope from El. 148 m to 150 m with an excavator from Sta. 1+270 m to 1+100 m.



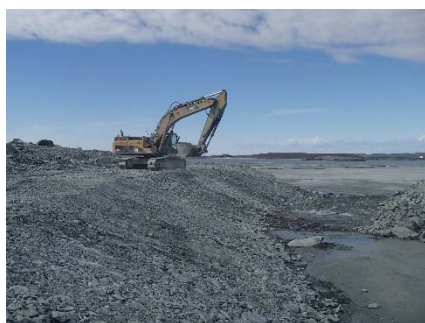
NCIS-064 (2018-06-30), looking W from Sta. 1+200/-65 m. Placement of a 2 m thick (approx.) lift of UM rockfill from El. 150 m to El. 152 m (approx.) with a dozer from Sta. 1+320 m to 1+235 m (-65 m to -45 m). The material is of good quality and is well graded.



NCIS-065 (2018-06-30), looking NE from Sta. 1+140/-96 m. Compaction of the 0.5 m lift of coarse filter between El. 148 and 150 m with a 10-tonne smooth-drum compactor with vibration (4 passes) in the upstream slope from Sta. 1+270 m to 1+100 m.



NCIS-066 (2018-06-30), looking N from Sta. 1+400/-34 m. Placement of a 0.5 m thick lift of fine filter over the coarse filter in the upstream slope from El. 150 m to 152 m with an excavator from Sta. 1+595 m to 1+550 m.



NCIS-067 (2018-07-01), looking N from Sta. 2+880/-26 m. Profiling of the upstream slope (3H:1V) from El. 150 to 152 m with an excavator from Sta. 2+860 m to 2+975 m.



NCIS-068 (2018-07-01), looking S from Sta. 1+150/-62 m. Placement of a 0.5 m thick lift of fine filter over the coarse filter in the upstream slope from El. 148 m to 150 m with an excavator from Sta. 1+180 m to 1+100 m.



NCIS-069 (2018-07-01), looking NW from Sta. 1+180/-56 m. Placement of a 2 m thick (approx.) lift of UM rockfill from El. 150 m to El. 152 m (approx.) with a dozer from Sta. 1+235 m to 1+160 m (-60 m to -44 m). The material is of good quality and is well graded.



NCIS-070 (2018-07-01), looking S from Sta. 1+160/-89 m. Compaction of the 0.5 m lift of fine filter between El. 150 and 152 m with a 10-tonne smooth-drum compactor with vibration (4 passes) in the upstream slope from Sta. 1+335 m to 1+100 m.



NCIS-071 (2018-07-02), looking SE from Sta. 2+670/-28 m. Placement of a 0.5 m thick lift of fine filter over the coarse filter in the upstream slope from El. 150 m to 152 m with an excavator from Sta. 1+550 m to 1+320 m and 1+630 m to 1+610 m.



NCIS-072 (2018-07-02), looking W from Sta. 2+790/-38 m. Profiling of the upstream slope (3H:1V) from El. 150 to 152 m with an excavator from Sta. 2+975 m to 3+070 m.



NCIS-073 (2018-07-03), looking N from Sta. 1+300/-33 m. Placement of a 0.5 m thick lift of fine filter over the coarse filter in the upstream slope from El. 150 m to 152 m with an excavator from Sta. 1+320 m to 1+300 m.



NCIS-074 (2018-07-03), looking SE from Sta. 2+750/-37 m. Compaction of the 0.5 m lift (approx.) of fine filter between El. 150 and 152 m with a 10-tonne smooth-drum compactor (4 passes) in the upstream slope from Sta. 2+810 m to 2+095 m.



NCIS-075 (2018-07-03), looking S from Sta. 2+860/-36 m. Placement of a 0.5 m thick lift of coarse filter in the upstream slope from El. 150 m to 152 m with an excavator from Sta. 2+815 m to 2+980 m.



NCIS-076 (2018-07-04), looking SW from Sta. 2+940/-15 m. Placement of a 0.5 m thick lift of coarse filter in the upstream slope from El. 150 m to 152 m with an excavator from Sta. 2+980 m to 3+160 m.



NCIS-077 (2018-07-04), looking S from Sta. 1+310/-32 m. Profiling of the upstream slope (3H:1V) from El. 150 m to 152 m with an excavator from Sta. 1+300 m to 1+175 m and from 3+070 m to 3+160 m.



NCIS-078 (2018-07-05), looking S from Sta. 2+760/-39 m. Placement of a 0.5 m thick lift of fine filter over the coarse filter in the upstream slope from El. 150 m to 152 m with an excavator from Sta. 2+800 m to 2+980 m.



NCIS-079 (2018-07-05), looking SW from Sta. 1+280/-39 m. Placement of a 0.5 m thick lift of coarse filter in the upstream slope from El. 150 m to 152 m with an excavator from Sta. 1+300 m to 1+200 m.



NCIS-080 (2018-07-05), looking S from Sta. 2+800/-38 m. Compaction of the 0.5 m lift (approx.) of coarse filter between El. 150 and 152 m with a 10-tonne smooth-drum compactor (4 passes) in the upstream slope from Sta. 2+925 m to 3+160 m and from Sta. 1+300 m to 1+200 m.



NCIS-081 (2018-07-06), looking SE from Sta. 2+975/-37 m (approx.). Placement of a 0.5 m thick lift of fine filter over the coarse filter in the upstream slope from El. 150 m to 152 m with an excavator from Sta. 1+300 m to 1+210 m and from Sta. 2+940 m to 3+120 m.



NCIS-082 (2018-07-07), looking S from Sta. 3+060/-33 m. Placement of a 0.5 m thick lift of fine filter over the coarse filter in the upstream slope from El. 150 m to 152 m with an excavator from Sta. 3+120 m to 3+160 m.



NCIS-083 (2018-07-07), looking SW from Sta. 1+140/52 m. Placement of a 2 m thick (approx.) lift of IV rockfill from El. 150 m to El. 152 m (approx.) with a dozer from Sta. 1+160 m to 1+170 m (-64 m to -111 m).



NCIS-084 (2018-07-08), looking E from Sta. 1+080/+47 m (approx.). Placement of a 2 m thick (approx.) lift of UM rockfill from El. 150 m to El. 152 m (approx.) with a dozer from Sta. 1+160 m to 1+130 m (-55 m to -102 m).



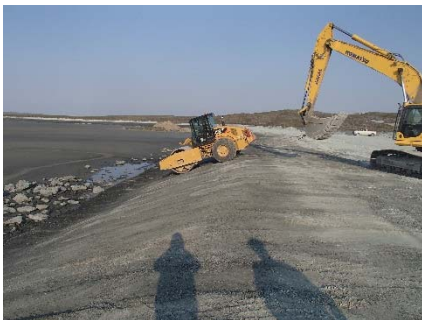
NCIS-085 (2018-07-09), looking SW from Sta. 1+150/-67 m (approx.). Placement of a 2 m thick (approx.) lift of UM rockfill from El. 150 m to El. 152 m (approx.) with a dozer from Sta. 1+130 m to 1+100 m (-55 m to -78 m).



NCIS-086 (2018-07-10), looking E from Sta. 2+750/+14 m (approx.). Placement of a 2 m thick (approx.) lift of UM rockfill from El. 152 m to El. 154 m (approx.) with a dozer from Sta. 2+780 m to 2+760 m (-60 m to -44 m).



NCIS-087 (2018-07-11), looking W from Sta. 1+950/-34 m (approx.). Compaction of the 0.5 m lift (approx.) of fine filter between El. 150 and 152 m with a 10-tonne smooth-drum compactor (4 passes) in the upstream slope from Sta. 2+000 m to 1+930 m.



NCIS-088 (2018-07-12), looking W from Sta. 2+000/-35 m (approx.). Compaction of the 0.5 m lift (approx.) of fine filter between El. 150 m and 152 m with a 10-tonne smooth-drum compactor (4 passes) in the upstream slope from Sta. 2+028 m to 1+650 m.



NCIS-089 (2018-07-12), looking S from Sta. 2+525/+4 m (approx.). Placement of a 2 m thick (approx.) lift of UM rockfill from El. 152 m to El. 154 m (approx.) with a dozer from Sta. 2+605 m to 2+455 m (+3 m to -23 m).



NCIS-090 (2018-07-13), looking SE from Sta. 2+440/-1 m (approx.). Placement of a 2 m thick (approx.) lift of UM rockfill from El. 152 m to El. 154 m (approx.) with a dozer from Sta. 2+455 m to 2+370 m (+4 m to -24 m).



NCIS-091 (2018-07-14), looking S from Sta. 2+330/+13 m (approx.). Placement of a 2 m thick (approx.) lift of UM rockfill from El. 152 m to El. 154 m (approx.) with a dozer from Sta. 2+370 m to 2+290 m (+9 m to -22 m).



NCIS-092 (2018-07-14), looking S from Sta. 1+160/-77 m (approx.). Profiling of the upstream slope (3H:1V) from El. 150 to 152 m with an excavator from Sta. 1+185 m to 1+135 m.



NCIS-093 (2018-07-15), looking S from Sta. 2+260/+12 m (approx.). Placement of a 2 m thick (approx.) lift of UM rockfill from El. 152 m to El. 154 m (approx.) with a dozer from Sta. 2+290 m to 2+280 m (+9 m to -22 m).



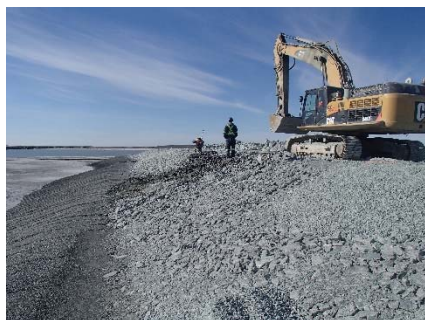
NCIS-094 (2018-07-15), looking SW from Sta. 1+125/-109 m (approx.). Profiling of the upstream slope (3H:1V) from El. 150 to 152 m with an excavator from Sta. 1+135 m to 1+115 m.



NCIS-095 (2018-07-16), looking S from Sta. 2+375/-18 m (approx.). Profiling of the upstream slope (3H:1V) from El. 152 to 154 m with an excavator from Sta. 2+545 m to 2+410 m.



NCIS-096 (2018-07-18), looking N from Sta. 2+355/+9 m (approx.). Placement of a 2 m thick (approx.) lift of UM rockfill from El. 152 m to El. 154 m (approx.) with a dozer from Sta. 2+190 m to 2+103 m (+7 m to -22 m).



NCIS-097 (2018-07-19), looking SW from Sta. 1+180/-75 m (approx.). Placement of a 0.5 m thick lift of coarse filter in the upstream slope from El. 150 m to 152 m with an excavator from Sta. 1+200 m to 1+113 m.



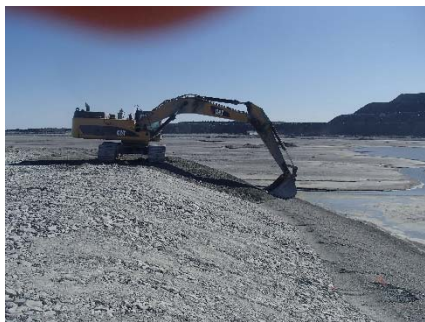
NCIS-098 (2018-07-19), looking E from Sta. 2+040/-9 m (approx.). Placement of a 2 m thick (approx.) lift of UM rockfill from El. 152 m to El. 154 m (approx.) with a dozer from Sta. 2+103 m to 1+984 m (+7 m to -22 m). The material is of good quality and is well graded.



NCIS-099 (2018-07-19), looking SE from Sta. 1+180/-76 m (approx.). Compaction of the 0.5 m lift (approx.) of coarse filter between El. 150 m and 152 m with a 10-tonne smooth-drum compactor with vibration (4 passes) in the upstream slope from Sta. 1+200 m to 1+170 m.



NCIS-100 (2018-07-20), looking E from Sta. 1+960/+10 m (approx.). Placement of a 2 m thick (approx.) lift of UM rockfill from El. 152 m to El. 154 m (approx.) with a dozer from Sta. 1+984 m to 1+947 m (+14 m to -26 m). The material is of good quality and is well graded.



NCIS-101 (2018-07-20), looking N from Sta. 1+120/-89 m (approx.). Placement of a 0.5 m thick lift of fine filter in the upstream slope from El. 150 m to 152 m with an excavator from Sta. 1+113 m to 1+205 m.



NCIS-102 (2018-07-20), looking W from Sta. 2+680/-21 m (approx.). Placement of a 0.5 m thick lift of coarse filter in the upstream slope from El. 152 m to 154 m with an excavator from Sta. 2+575 m to 2+710 m and from Sta. 2+411 m to 2+460 m.



NCIS-103 (2018-07-20), looking NE from Sta. 2+420/-27 m (approx.). Profiling of the upstream slope (3H:1V) from El. 152 to 154 m with an excavator from Sta. 2+400 m to 2+410 m. Oversize boulders were removed.



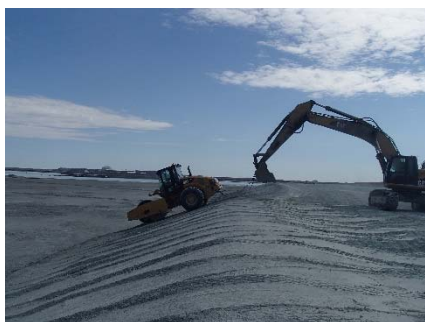
NCIS-104 (2018-07-21), looking SE from Sta. 2+650/-23 m (approx.). Placement of a 0.5 m thick lift of fine filter in the upstream slope from El. 152 m to 154 m with an excavator from Sta. 2+710 m to 2+445 m.



NCIS-105 (2018-07-21), looking NW from Sta. 2+630/-34 m (approx.). Compaction of the 0.5 m lift (approx.) of coarse filter between El. 152 m and 154 m with a 10-tonne smooth-drum compactor with vibration (4 passes) in the upstream slope from Sta. 2+710 m to 2+411 m.



NCIS-106 (2018-07-21), looking NW from Sta. 2+620/-35 m (approx.). Placement of a 2 m thick (approx.) lift of UM rockfill from El. 152 m to El. 154 m (approx.) with a dozer from Sta. 1+947 m to 1+863 m (+14 m to -26 m).



NCIS-107 (2018-07-21), looking S from Sta. 1+380/-38 m (approx.). Compaction of the 0.5 m lift (approx.) of fine filter between El. 150 m and 152 m with a 10-tonne smooth-drum compactor with vibration (4 passes) in the upstream slope from Sta. 1+251 m to 1+660 m.



NCIS-108 (2018-07-22), looking N from Sta. 2+490/-32 m (approx.). Profiling of the upstream slope (3H:1V) from El. 152 to 154 m with an excavator from Sta. 2+159 m to 2+409 m.



NCIS-109 (2018-07-22), looking N from Sta. 2+450/-21 m (approx.). Placement of a 0.5 m thick lift of coarse filter in the upstream slope from El. 152 m to 154 m with an excavator from Sta. 2+293 m to 2+411 m.



NCIS-110 (2018-07-23), looking N from Sta. 2+320/-22 m (approx.). Compaction of the 0.5 m lift (approx.) of coarse filter between El. 152 m and 154 m with a 10-tonne smooth-drum compactor with vibration (4 passes) in the upstream slope from Sta. 2+293 m to 2+080 m.



NCIS-111 (2018-07-23), looking NW from Sta. 2+320/-22 m (approx.). Profiling of the upstream slope (3H:1V) from El. 152 to 154 m with an excavator from Sta. 2+159 m to 2+000 m and placement of a 0.5 m thick lift of coarse filter in the upstream slope from El. 152 m to 154 m with an excavator from Sta. 2+293 m to 2+080 m.



NCIS-112 (2018-07-24), looking N from Sta. 2+610/-29 m (approx.). Compaction of the 0.5 m lift (approx.) of coarse filter between El. 152 m and 154 m with a 10-tonne smooth-drum compactor with vibration (4 passes) in the upstream slope from Sta. 2+080 m to 2+000 m.



NCIS-113 (2018-07-24), looking SW from Sta. 2+220/-26 m (approx.). Profiling of the upstream slope (3H:1V) from El. 152 to 154 m with an excavator from Sta. 2+000 m to 1+185 m and placement of a 0.5 m thick lift of fine filter in the upstream slope from El. 152 m to 154 m with an excavator from Sta. 2+300 m to 2+090 m.



NCIS-114 (2018-07-24), looking N from Sta. 1+700/-34 m (approx.). Excavation of a 0.8 m (approx.) deep, 1 m wide shallow ditch in the rockfill capping with an excavator from Sta. 1+500 m to 1+650 m.



NCIS-115 (2018-07-24), looking NE from Sta. 3+040/-33 m (approx.). Excavation of a 1 m (approx.) sump in the tailings with an excavator from Sta. 3+010 m to 3+030 m (o.s. +27 to +30 m).



NCIS-116 (2018-07-25), looking SE from Sta. 1+700/+37 m (approx.). Excavation of a 0.8 m (approx.) deep, 1 m wide shallow ditch in the rockfill capping with an excavator from Sta. 1+500 m to 1+455 m.



NCIS-117 (2018-07-25), looking SW from Sta. 2+050/-25 m (approx.). Placement of a 0.5 m thick lift of fine filter in the upstream slope from El. 152 m to 154 m with an excavator from Sta. 2+090 m to 1+890 m.



NCIS-118 (2018-07-25), looking S from Sta. 1+500/-37 m (approx.). View of a deposition point.



NCIS-119 (2018-07-26), looking N from Sta. 1+430/-22 m (approx.). Excavation of a 0.8 m (approx.) deep, 1 m wide shallow ditch in the rockfill capping with an excavator from Sta. 1+455 m to 1+400 m.



NCIS-120 (2018-07-26), looking NE from Sta. 1+830/-27 m (approx.). View of an accumulation of boulders on the upstream slope of the NCIS.



NCIS-121 (2018-07-26), looking NE from Sta. 3+050/+26 m (approx.). Placement of a 0.3 m thick (approx.) layer of till sieving reject material on the bottom and on the slopes of the sump.



NCIS-122 (2018-07-27), looking W from Sta. 1+960/-6 m (approx.). Placement of a 2 m thick (approx.) lift of UM rockfill from El. 152 m to El. 154 m (approx.) with a dozer from Sta. 1+830 m to 1+860 m (+8 m to -23 m).



NCIS-123 (2018-07-27), looking S from Sta. 3+340/+33 m (approx.). Excavation of a 1 m (approx.) deep sump (south sump) in the tailings with an excavator from Sta. 3+345 m to 3+365 m (o.s. +24 to +32 m).



NCIS-124 (2018-07-27), looking S from Sta. 3+340/+33 m (approx.). Placement of a 0.3 m thick (approx.) layer of till sieving reject material on the bottom and on the slopes of the south sump.



NCIS-125 (2018-07-27), looking NE from Sta. 3+050/+26 m (approx.). Corrections to the north sump: removal of approx. 0.5 m of tailing and till sieving reject material on the bottom of the excavation. The erosion protection material was replaced.



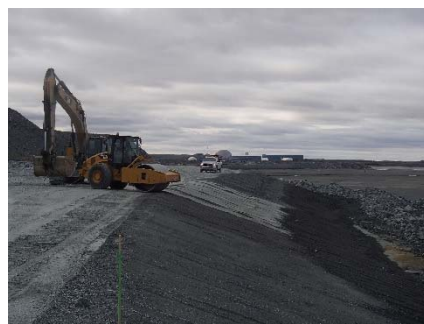
NCIS-126 (2018-07-27), looking W from Sta. 1+140/-98 m (approx.). Compaction of the 0.5 m lift (approx.) of fine filter between El. 150 m and 152 m with a 10-tonne smooth-drum compactor with vibration (4 passes) in the upstream slope from Sta. 1+240 m to 1+100 m.



NCIS-127 (2018-07-28), looking SW from Sta. 1+470/+20 m (approx.). View of the culvert installed in the ditch at Sta. 1+460 m.



NCIS-128 (2018-07-28), looking NE from Sta. 1+680/-42 m (approx.). Placement of a 2 m thick (approx.) lift of UM rockfill from El. 152 m to El. 154 m (approx.) with a dozer from Sta. 1+830 m to 1+660 m (+8 m to -31 m) and profiling of the upstream slope (3H:1V) from El. 152 to 154 m with an excavator from Sta. 1+880 m to 1+780 m.



NCIS-129 (2018-07-28), looking S from Sta. 2+450/-21 m (approx.). Compaction of the 0.5 m lift (approx.) of fine filter between El. 152 m and 154 m with a 10-tonne smooth-drum compactor with vibration (4 passes) in the upstream slope from Sta. 2+220 m to 1+940 m.



NCIS-130 (2018-07-28), looking S from Sta. 1+445/+16 m (approx.). Excavation of a 0.8 m (approx.) deep, 1 m wide shallow ditch in the rockfill capping with an excavator from Sta. 1+380 m to 1+300 m.



NCIS-131 (2018-07-29), looking W from Sta. 1+940/-20 m (approx.). Compaction of the 0.5 m lift (approx.) of coarse filter between El. 152 m and 154 m with a 10-tonne smooth-drum compactor with vibration (4 passes) in the upstream slope from Sta. 1+890 m to 1+826 m.



NCIS-132 (2018-07-29), looking W from Sta. 1+940/-20 m (approx.). Profiling of the upstream slope (3H:1V) from El. 152 to 154 m with an excavator from Sta. 1+780 m to 1+660 m.



NCIS-133 (2018-07-29), looking W from Sta. 1+820/-28 m (approx.). Placement of a 0.5 m thick lift of coarse filter in the upstream slope from El. 152 m to 154 m with an excavator from Sta. 1+890 m to 1+826 m.



NCIS-134 (2018-07-30), looking NE from Sta. 1+630/-32 m (approx.). Completion of the profiling of the upstream slope (3H:1V) from El. 152 to 154 m with an excavator from Sta. 1+700 m to 1+660 m.



NCIS-135 (2018-07-30), looking SW from Sta. 1+860/-12 m (approx.). Placement of a 0.5 m thick lift of fine filter in the upstream slope from El. 152 m to 154 m with an excavator from Sta. 1+830 m to 1+700 m.



NCIS-136 (2018-07-31), looking SW from Sta. 1+800/-33 m (approx.). Placement of a 0.5 m thick lift of fine filter in the upstream slope from El. 152 m to 154 m with an excavator from Sta. 1+700 m to 1+660 m.



NCIS-137 (2018-07-31), looking SW from Sta. 1+380/+14 m (approx.). Excavation of a 0.8 m (approx.) deep, 1 m wide shallow ditch in the tailings with an excavator from Sta. 1+300 m to 1+200 m.



NCIS-138 (2018-08-01), looking SW from Sta. 1+365/+15 m (approx.). Excavation of a 0.8 m (approx.) deep, 1 m wide shallow ditch in the tailings and placement of a 0.3 m thick (approx.) layer of till sieving reject material on the bottom and on the slopes of the ditch from Sta. 1+200 m to 1+100 m.

North Cell Internal Structure Construction Photographs



CD-1796 (2018-04-23), looking N from Sta. 0+650/-28 m. Damaged geomembrane near a deposition finger on Central Dike.



CD-1797 (2018-04-23), looking N from Sta. 0+380/-20 m. Placement a 2 m thick (approx.) lift of intermediate volcanic rockfill from El. 143 m to El. 145 m from 0+250 to 0+400 m (o.s. -28 to -18 m).



CD-1798 (2018-04-24), looking N from Sta. 0+500/-15 m. Placement a 2 m thick (approx.) lift of intermediate volcanic rockfill from El. 143 m to El. 145 m from 0+340 to 0+435 m (o.s. -28 to -18 m).



CD-1799 (2018-04-24), looking S from Sta. 0+080/-25 m. Placement a 2 m thick (approx.) lift of intermediate volcanic rockfill from El. 143 m to El. 145 m from 0+340 to 0+435 m (o.s. -28 to -18 m).



CD-1800 (2018-04-25), looking N from Sta. 0+500/-14 m. Placement a 2 m thick (approx.) lift of intermediate volcanic (IV) rockfill from El. 143 m to El. 145 m from 0+435 to 0+535m (o.s. -28 to -18 m).



CD-1801 (2018-04-26), looking N from Sta. 0+650/-10 m. Placement a 2 m thick (approx.) lift of intermediate volcanic (IV) rockfill from El. 143 m to El. 145 m from 0+535 to 0+625m (o.s. -28 to -18 m).



CD-1802 (2018-04-27), looking N from Sta. 0+770/-16 m. Placement a 2 m thick (approx.) lift of intermediate volcanic (IV) rockfill from El. 143 m to El. 145 m from approx. Sta. 0+625 to 0+710 m (o.s. -28 to -18 m).



CD-1803 (2018-04-27), looking NE from Sta. 40+750/+27 m. Removal of snow to expose the foundation bedrock with an excavator between approx. Sta. 40+780 and 40+800 m (o.s. 7 to 10 m).



CD-1804 (2018-04-28), looking S from Sta. 40+790/-2 m. Presence of oversize boulders on the existing slope at the junction between SD5 and Central Dike.



CD-1805 (2018-04-28), looking NE from Sta. 40+780/+2 m. Placement a 1.5 m thick (approx.) lift of intermediate volcanic (IV) rockfill from approx. Sta. 40+780 to 40+805 m (o.s. -6 to 9 m).



CD-1806 (2018-04-28), looking N from Sta. 0+800/-27 m. Placement a 2 m thick (approx.) lift of intermediate volcanic (IV) rockfill from El. 143 m to El. 145 m from approx. Sta. 0+710 to 0+760m (o.s. -28 to 3 m).



CD-1807 (2018-04-28), looking S from Sta. 0+200/-15 m. Compaction of the 2 m lift (approx.) of IV rockfill with a 10-tonne smooth-drum compactor with vibration (6 passes) from Sta. 0+150 to 0+280 m (o.s. -21 to 11 m).



CD-1808 (2018-04-28), looking E from Sta. 40+790/-14 m. Placement a 2 m thick (approx.) lift of intermediate volcanic (IV) rockfill from approx. Sta. 40+780 to 40+805 m (o.s. -6 to 9 m).



CD-1809 (2018-04-29), looking N from Sta. 0+870/-16 m. Placement a 2 m thick (approx.) lift of intermediate volcanic (IV) rockfill from El. 143 m to El. 145 m from approx. Sta. 0+760 to 0+835 m (o.s. -28 to 3 m).



CD-1810 (2018-04-30), looking S from Sta. 0+335/-15 m. Compaction of the 2 m lift (approx.) of IV rockfill at El. 145 m with a 10-tonne smooth-drum compactor with vibration (6 passes) from Sta. 0+350 to 0+540 m (o.s. -19 to -7 m).



CD-1811 (2018-04-30), looking SE from Sta. 0+985/-11 m. Placement the second, third, fourth and fifth 1 m thick (approx.) lifts of intermediate volcanic (IV) rockfill from approx. Sta. 0+985 to 40+780 m (o.s. -8 to 8 m) with the excavator.



CD-1812 (2018-04-30), looking SE from Sta. 0+985/-11 m. Placement of intermediate volcanic (IV) rockfill on the existing downstream slope up to approx. El. 140 m, from approx. Sta. 0+985 to 40+780 m.



CD-1813 (2018-05-01), looking S from Sta. 0+980/-2 m. Placement of intermediate volcanic (IV) rockfill on the existing downstream slope up to approx. El. 143 m, from approx. Sta. 0+980 to 40+780 m.



CD-1814 (2018-05-01), looking NE from Sta. 0+970/-10 m. Placement of intermediate volcanic (IV) rockfill around the instruments at approx. Sta. 0+830 m with the excavator.



CD-1815 (2018-05-02), looking S from Sta. 0+920/-25 m. Placement of a 2 m thick (approx.) lift of intermediate volcanic (IV) rockfill from El. 143 m to El. 145 m from approx. Sta. 40+740 to 0+980 m (o.s. -28 to -11 m).



CD-1816 (2018-05-02), looking S from Sta. 0+175/-27 m. Profiling of the upstream slope (2H:1V) from El. 143 to 145 m with an excavator between Sta. 0+175 and 0+560 m.



CD-1817 (2018-05-02), looking NE from Sta. 40+700/-10 m. View of the rockfill lift thickness at the junction of Saddle Dam 5 and Central Dike, approx. 2.5 m thick..



CD-1818 (2018-05-03), looking NE from Sta. 40+770/-25 m. Placement of a 2 m thick (approx.) lift of intermediate volcanic (IV) rockfill from El. 143 m to El. 145 m from approx. Sta. 0+980 m to 0+880 m (o.s. -28 to -11 m).



CD-1819 (2018-05-03), looking S from Sta. 0+560/-21 m. Profiling of the upstream slope (2H:1V) from El. 143 to 145 m with an excavator between Sta. 0+560 m and 0+830 m.



CD-1820 (2018-05-04), looking S from Sta. 0+790/-7 m. Placement of a 2 m thick (approx.) lift of intermediate volcanic (IV) rockfill from El. 143 m to El. 145 m from approx. Sta. 0+880 m to 0+830 m (o.s. -28 to -11 m).



CD-1821 (2018-05-04), looking S from Sta. 0+175/+3 m. Profiling of the downstream slope (1.5H:1V) from El. 143 to 145 m with an excavator between Sta. 0+250 m and 0+330 m.



CD-1822 (2018-05-04), looking N from Sta. 40+725/+7 m. Placement of two 2 m thick lifts of IV rockfill from El. 141 m to El. 145 m from approx. Sta. 40+720 m to 40+750 m (o.s. -10 to +10 m) and profiling of the upstream slope (2H:1V) from El. 143 to 145 m with an excavator between Sta. 0+830 m and 0+980 m.



CD-1823 (2018-05-04), looking NE from Sta. 40+725/+8 m. Compaction of the two 2 m lifts (approx.) of intermediate volcanic (IV) rockfill at El. 143 and at El. 145 m with a 10-tonne smooth-drum compactor with vibration (6 passes) from Sta. 40+720 m to 40+750 m (o.s. -10 to +10 m).



CD-1824 (2018-05-05), looking NE from Sta. 40+760/-25 m. Profiling of the upstream slope (2H:1V) from El. 143 to 145 m with an excavator between Sta. 0+830 m and 40+730 m.



CD-1825 (2018-05-05), looking S from Sta. 0+430/+9 m. Profiling of the downstream slope (1.5H:1V) from El. 143 to 145 m with an excavator between Sta. 0+330 m and 0+440 m and between Sta. 0+530 m and 0+745 m.



CD-1826 (2018-05-06), looking NE from Sta. 40+770/-27 m. Placement of a 0.5 m thick lift of coarse filter from El. 143 m to 143.5 m with an excavator from Sta. 40+730 m to 0+775 m.



CD-1827 (2018-05-06), looking SW from Sta. 0+940/-16 m. Placement of a 0.5 m thick lift of fine filter from El. 143 m to 143.5 m with an excavator from Sta. 40+730 m to 0+835 m.



CD-1828 (2018-05-06), looking N from Sta. 0+410/-22 m. Defrosting of the deposition point finger materials with two Frost Fighters at Sta. 0+390 m.



CD-1829 (2018-05-06), looking N from Sta. 0+340/-24 m. Placement of a 0.5 m thick lift of coarse filter from El. 143 m to 143.5 m with an excavator from Sta. 0+170 m to 0+460 m and placement of a 0.5 m thick lift of fine filter from Sta. 0+170 m to 0+380 m.



CD-1830 (2018-05-07), looking N from Sta. 0+420/-26 m. Removal of the deposition finger materials with an excavator at Sta. 0+390 m.



CD-1831 (2018-05-07), looking NE from Sta. 40+730/-24 m. Compaction of the 0.5 m lift (approx.) of fine and coarse filters material at El. 143.5 m with a 10-tonne smooth-drum compactor with vibration (6 passes) from Sta. 40+730 to 0+830 m.



CD-1832 (2018-05-07), looking N from Sta. 0+280/-25 m. Placement of a second 0.5 m thick lift of coarse filter from El. 143.5 m to 144 m with an excavator from Sta. 0+175 m to 0+280 m.



CD-1833 (2018-05-07), looking S from Sta. 0+390/-25 m. Damaged geomembrane near a deposition finger on Central Dike at Sta. 0+390 m.



CD-1834 (2018-05-08), looking NE from Sta. 40+760/-23 m. Placement of a first 0.5 m thick lift of coarse filter from El. 143 m to 143.5 m on length of approx. 5 m with an excavator at the location of the deposition finger at Sta 0+520 m and 0+660 m.



CD-1835 (2018-05-08), looking N from Sta. 0+830/-20 m. Compaction of the first 0.5 m lift (approx.) of fine and coarse filters material at El. 143.5 m with a 10-tonne smooth-drum compactor with vibration (6 passes) from Sta 0+490 m to 0+835 m.



CD-1836 (2018-05-08), looking N from Sta. 0+580/-18 m. Placement of a first 0.5 m thick lift of fine filter from El. 143 m to 143.5 m upstream of the coarse filter with an excavator from Sta. 0+490 m to 0+835 m.



CD-1837 (2018-05-08), looking N from Sta. 0+940/-25 m. Placement of a second 0.5 m thick lift of coarse filter from El. 143.5 m to 144 m with an excavator from Sta. 0+290 m to 0+500 and from Sta. 0+835 m to 0+930 m.



CD-1838 (2018-05-09), looking NE from Sta. 40+750/-31 m. Placement of a second 0.5 m thick lift of fine filter from El. 143.5 m to 144 m upstream of the coarse filter with an excavator from Sta. 0+500 m to 0+835 m and from 0+930 to 40+730 m.



CD-1839 (2018-05-09), looking N from Sta. 0+835/-20 m. Placement of a second 0.5 m thick lift of coarse filter from El. 143.5 m to 144 m with an excavator from Sta. 0+500 m to 0+835 m and from 0+930 to 40+730 m.



CD-1840 (2018-05-09), looking NW from Sta. 0+575/-15 m. Compaction of the second 0.5 m lift (approx.) of fine and coarse filters material at El. 144 m with a 10-tonne smooth-drum compactor with vibration (4 passes) from Sta 0+500 m to 40+730 m.



CD-1841 (2018-05-10), looking N from Sta. 0+475/-14 m. Placement of a third 0.5 m thick lift of coarse filter from El. 144 m to 144.5 m with an excavator from Sta. 0+335 m to 40+730 m.



CD-1842 (2018-05-10), looking S from Sta. 0+380/-16 m. Placement of a third 0.5 m thick lift of fine filter from El. 143.5 m to 144 m upstream of the coarse filter with an excavator from Sta. 0+335 m to 0+940 m.



CD-1843 (2018-05-10), looking S from Sta. 0+460/-23 m. Compaction of the third 0.5 m lift (approx.) of fine and coarse filters material at El. 144.5 m with a 10-tonne smooth-drum compactor with vibration (4 passes) from Sta 0+335m to 0+900 m.



CD-1844 (2018-05-11), looking SE from Sta. 0+080/-49 m. Placement of a fourth 0.5 m thick lift of coarse filter from El. 144.5 m to 145 m with an excavator from Sta. 0+170 m to 40+730 m.



CD-1845 (2018-05-11), looking N from Sta. 0+660/-20 m. Profiling of the upstream slope (2H:1V) from El. 143 to 145 m with an excavator between Sta. 0+175 and 0+330 m and between Sta. 0+600 m and 0+715 m.



CD-1846 (2018-05-12), looking N from Sta. 0+835/-25 m. Profiling of the upstream slope (2H:1V) from El. 143 to 145 m with an excavator between Sta. 0+330 and 0+600 m and between Sta. 0+715 m and 40+730 m.



CD-1847 (2018-05-12), looking SE from Sta. 0+085/-48 m. Compaction of the fourth 0.5 m lift (approx.) of fine and coarse filters material at El. 145 m with a 10-tonne smooth-drum compactor with vibration (4 passes) from Sta 0+170 m to 0+930 m.



CD-1848 (2018-05-13), looking N from Sta. 40+780/-15 m. Compaction of the fourth 0.5 m lift (approx.) of fine and coarse filters material at El. 145 m with a 10-tonne smooth-drum compactor with vibration (4 passes) from Sta 0+930 m to 40+730 m.



CD-1849 (2018-05-13), looking NE from Sta. 40+750/-17 m. Final rolling of the upstream slope in view of the LLDPE geomembrane installation from Sta. 0+170 m to 40+730 m.