



**CD-1850 (2018-05-13), looking SW from Sta. 0+160/+20 m. Profiling of the downstream slope (1.5H:1V) from El. 143 to 145 m with an excavator between Sta. 0+440 m and 0+530 m and between Sta. 0+745 m and 0+835 m.**



**CD-1851 (2018-05-13), looking S from Sta. 0+910/-18 m. Excavation of the LLDPE geomembrane crest anchoring trench from Sta. 40+730 m to 0+830 m.**



**CD-1852 (2018-05-14), looking N from Sta. 0+500/-25 m. Excavation of the LLDPE geomembrane crest anchoring trench from Sta. 0+830 m to 0+170 m.**



**CD-1853 (2018-05-14), looking S from Sta. 0+850/+3 m. Profiling of the downstream slope (1.5H:1V) from El. 143 to 145 m with an excavator between Sta. 0+835 m and 0+940.**



**CD-1854 (2018-05-15), looking N from Sta. 0+860/-13 m. Profiling of the downstream slope (1.5H:1V) from El. 143 to 145 m with an excavator between Sta. 0+940 m and 0+990 m.**



**CD-1855 (2018-05-16), looking S from Sta. 0+230/-22 m. Clean-up of the existing LLDPE with pressurized air stream in preparation for liner installation between Sta. 0+170 m and 40+780 m3.**



**CD-1856 (2018-05-18), looking N from Sta. 0+670/-24 m. Clean-up of the fine filter placed against the slope at the deposition finger at approx. Sta. 0+670 m with pressurized air stream to expose 1 m of LLDPE liner, in preparation for the new liner installation.**



**CD-1857 (2018-05-21), looking N from Sta. 0+700/-20 m. Snow removal in the anchoring trench with an excavator between Sta. 0+170 m and 40+780 m.**



**CD-1858 (2018-05-21), looking S from Sta. 0+970/-45 m. View of the bottom of the fine filter upstream slope. Some material is missing to achieve a smooth slope.**



**CD-1859 (2018-05-22), looking SW from Sta. 40+780/-38 m. Installation of the geotextile on the upstream slope 3H:1V (SD5 side) to 2H:1V (Central Dike side) between El. 143 m and 145 m from Sta. 40+640 m to 0+830 m.**



**CD-1860 (2018-05-23), looking N from Sta. 0+790/-26 m. Installation of the geotextile on the upstream slope 2H:1V between El. 143 m and 145 m from Sta. 0+830 m to 0+750 m.**



**CD-1861 (2018-05-24), looking NE from Sta. 40+680/-8 m. Installation of the LLDPE liner on the upstream slope 3H:1V (SD5 side) to 2H:1V (Central Dike side) between El. 143 m and 145 m from Sta. 40+680 m to 0+950 m (panel numbers 802 to 817).**



**CD-1862 (2018-05-24), looking from Sta. 40+960/-24 m. View of an air channel test.**



**CD-1863 (2018-05-24), looking SW from Sta. 40+750/-18 m. Backfilling of the geosynthetic tie-in from Sta. 40+680 m to 0+950 m.**



**CD-1864 (2018-05-25), looking from Sta. 40+700/-38 m. View of bubbles formed in the extrusion weld because of humidity.**



**CD-1865 (2018-05-25), looking NW from Sta. 40+740/-35 m. Repairs on the extrusion fillet seam at the bottom of the LLDPE liner panels between Sta. 40+680 m and 0+950 m, on panels 802 to 807, and 811 to 813.**



**CD-1866 (2018-05-25), looking NW from Sta. 0+940/-25 m. Installation of the LLDPE liner on the upstream slope 2H:1V between El. 143 m and 145 m from Sta. 0+950 m to 0+935 m (panel numbers 818 and 819).**



**CD-1867 (2018-05-25), looking E from Sta. 40+680/-37 m. View of repair patches on the extrusion weld at the bottom of the panels.**





**CD-1868 (2018-05-27), looking S from Sta. 0+915/-24 m. Removal of the wet geotextile in place from Sta. 0+935 m to 0+900 m.**



**CD-1869 (2018-05-27), looking W from Sta. 0+915/-30 m. Installation of the geotextile on the upstream slope 2H:1V between El. 143 m and 145 m from Sta. 0+935 m to 0+900 m.**



**CD-1870 (2018-05-27), looking S from Sta. 0+900/-26 m. Installation of the LLDPE liner on the upstream slope 2H:1V between El. 143 m and 145 m from Sta. 0+935 m to 0+900 m (panel numbers 820 to 823).**



**CD-1871 (2018-05-28), looking N from Sta. 0+910/-25 m. Installation of the geotextile on the upstream slope 2H:1V between El. 143 m and 145 m from Sta. 0+900 m to 0+870 m.**



**CD-1872 (2018-05-28), looking N from Sta. 0+900/-24 m. Installation of the LLDPE liner on the upstream slope 2H:1V between El. 143 m and 145 m from Sta. 0+900 m to 0+760 m (panel numbers 824 to 844).**



**CD-1873 (2018-05-29), looking N from Sta. 0+760/-26 m. Installation of the geotextile on the upstream slope 2H:1V between El. 143 m and 145 m from Sta. 0+760 m to 0+740 m.**



**CD-1874 (2018-05-29), looking N from Sta. 0+760/-26 m. Installation of the LLDPE liner on the upstream slope 2H:1V between El. 143 m and 145 m from Sta. 0+760 m to 0+740 m (panel numbers 845 to 848).**



**CD-1875 (2018-05-30), looking N from Sta. 0+835/-26 m. View of a vacuum box testing.**



**CD-1876 (2018-05-30), looking N from Sta. 0+820/-26 m. View of repair patches on the extrusion weld at the bottom of the panel 838.**



CD-1877 (2018-06-01), looking N from Sta. 0+745/-22 m. Installation of the geotextile on the upstream slope 2H:1V between El. 143 m and 145 m from Sta. 0+740 m to 0+610 m.



CD-1878 (2018-06-01), looking N from Sta. 0+720/-22 m. Installation of the LLDPE liner on the upstream slope 2H:1V between El. 143 m and 145 m from Sta. 0+740 m to 0+610 m (panel numbers 849 to 867).



CD-1879 (2018-06-01), looking N from Sta. 0+735/-28 m. View of the repaired holes on panel 850.



CD-1880 (2018-06-02), looking N from Sta. 0+600/-25 m. Installation of the geotextile on the upstream slope 2H:1V between El. 143 m and 145 m from Sta. 0+610 m to 0+480 m.



CD-1881 (2018-06-02), looking N from Sta. 0+530/-27 m. View of a geotextile panel with a horizontal weld in the slope at Sta. 0+520 m before its removal.



CD-1882 (2018-06-02), looking S from Sta. 0+510/-25 m. View of the emplacement of the geotextile panel with a horizontal weld in the slope at Sta. 0+520 following its removal.



CD-1883 (2018-06-02), looking N from Sta. 0+525/-26 m. Installation of the LLDPE liner on the upstream slope 2H:1V between El. 143 m and 145 m from Sta. 0+610 m to 0+480 m (panel numbers 868 to 886).



CD-1884 (2018-06-02), looking S from Sta. 0+530/-25 m. Backfilling of the geosynthetic tie-in from Sta. 0+610 m to 0+480 m and compaction of the tie-in material with a 10-tonne smooth-drum compactor with vibration (4 passes) from Sta. 0+610 to 0+480 m.



CD-1885 (2018-06-03), looking N from Sta. 0+460/-26 m. Installation of the geotextile on the upstream slope 2H:1V between El. 143 m and 145 m from Sta. 0+480 m to 0+320 m. compactor with vibration (4 passes) from Sta. 0+610 to 0+480 m.





**CD-1886 (2018-06-03), looking N from Sta. 0+485/-26 m. Installation of the LLDPE liner on the upstream slope 2H:1V between El. 143 m and 145 m from Sta. 0+480 m to 0+320 m (panel numbers 887 to 910).**



**CD-1887 (2018-06-04), looking N from Sta. 0+310/-26 m. Installation of the geotextile on the upstream slope 2H:1V between El. 143 m and 145 m from Sta. 0+320m to 0+160 m.**



**CD-1888 (2018-06-04), looking N from Sta. 0+325/-26 m. Installation of the LLDPE liner on the upstream slope 2H:1V between El. 143 m and 145 m from Sta. 0+320 m to 0+160 m (panel numbers 911 to 910).**



**CD-1889 (2018-06-04), looking N from Sta. 0+150/-28 m. View of the underlying liner that has been cut at around Sta. 0+160 m to drain the water.**



**CD-1890 (2018-06-05), looking N from Sta. 0+310/-26 m. View of the extrusion welding.**



**CD-1891 (2018-06-05), looking NE from Sta. 0+960/-28 m. View of leaking extrusion fillet seams before their repair on panel 816 and 818.**



**CD-1892 (2018-06-06), looking S from Sta. 0+155/-32 m. View of the liner panel 933 overlapping the underlying liner that has been cut at around Sta. 0+160 m to drain the water.**



**CD-1893 (2018-06-06), looking SW from Sta. 0+950/-27 m. View of repair patches on the extrusion weld at the bottom of the panels 803, 807, 808, 810, 814, 815, 816 and 818.**



**CD-1894 (2018-06-10), looking W from Sta. 0+800/-28 m. View of a block in direct contact with the LLDPE liner following the construction of the deposition fingers on Central Dike.**



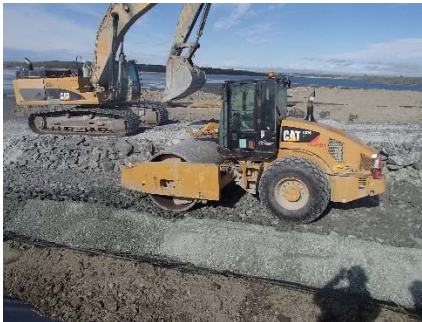
**CD-1895 (2018-06-11), looking E from Sta. 40+670/-15 m. Compaction of the geosynthetics tie-in material at El. 145 m with a 10-tonne smooth-drum compactor with vibration (4 passes) from Sta. 40+670 m to 0+950 m.**



**CD-1896 (2018-07-22), looking S from Sta. 0+140/-30 m. Placement of 0.5 m thick layers of compacted sieved till and fine filter on the upstream slope of Central Dike with an excavator from Sta. 0+147 m to 0+177 m.**



**CD-1897 (2018-07-22), looking NW from Sta. 0+145/-30 m. Placement of a 0.5 m thick lift of coarse filter on the top of the fine filter on the top of the upstream toe liner tie-in and on the upstream slope with an excavator from Sta. 0+147 m to 0+177 m.**



**CD-1898 (2018-07-22), looking W from Sta. 0+145/-30 m. Compaction of the 0.5 m thick lift of coarse filter on the top of the fine filter on the top of the upstream toe liner tie-in and on the upstream slope with a 10 tonne smooth-drum compactor with vibration (4 passes) from Sta. 0+147 m to 0+177 m.**



**CD-1899 (2018-07-22), looking S from Sta. 0+140/-33 m. View of Central Dike at the end of the 2018 construction phase.**

**APPENDIX D**

# Construction Meeting Minutes

DAILY CONSTRUCTION MEETING

CENTRAL DIKE



**AGNICO EAGLE**  
MEADOWBANK

**Date:** 4/23/2018

**Time:** 8:00

Presents:

**AEM:** Pier-Éric McDonal, Olivier Jacques

**SANA:** Luc Blanchette, Sabin Larouche, Jeannot Gagnon, Dany Pageau

**QA:**

**QC:**

Health & Safety:

A Switch Channel Sign from PORT OP to MBDYKES on one side and MBDYKES to PORT OP on the other side was installed at the entrance of central dike south access.

AEM advise Sana that the heavy equipments need to have their windows and doors close at all time. Dust Prevention

Daily Advance:

**SANA:**

Sana started the rockfill yesterday from the North. One Haul Truck 777 (HTR6) at the start of the shift and we put another Haul Truck 777 (HTR14) at 14h00 PM.

Loading Unit SANA WA-600. Placement Unit = Sana D8T

No survey this morning, he went on Amaruq Road. Wenco Quantities = 67 Loads for 5 829 T.

AEM ask Sana if it's possible to have chainage progression at the morning meeting with the Dozer GPS.

**QA:**

**OWNER:**

General Planning/Comments:

**SANA:**

**QA:**

QA will arrive on-site today.

**OWNER:**

**Report By:** Olivier Jacques, Dike Supervisor



DAILY CONSTRUCTION MEETING

CENTRAL DIKE



**AGNICO EAGLE**  
MEADOWBANK

**Date:** 4/24/2018

**Time:** 8:00

Presents:

**AEM:** Pier-Éric McDona, Olivier Jacques

**SANA:** Pierre Gauthier, Sabin Larouche, Dany Pageau

**QA:** Marion Habersetzer

**QC:** Cédric Fillion-Tremblay

Health & Safety:

Reminder to all personnel working on central dike to give blast clearance to the Drill & Blast Supervisor

AEM ask Sana to lower the snowbank at the central dike north entrance to increase light vehicule visibility for Haul truck

Reminder it is strickly forbidden to pass on the LLDPE liner with pick-up trucks

Daily Advance:

**SANA:**

Rockfill : 2 Haul truck HTR6 and HTR14, Wenco - 73 Loads = 6351 T. = +/- 3 300 m3

Rockfill Progression : Station - 0+255 @ 0+342 = 87m

**QA:**

**OWNER:**

General Planning/Comments:

**SANA:**

**QA:**

Granulometry test on Fine and Coarse Filter

Coarse Filter : Stockpile = 1 / 5000 m3, Placement 1 / 5000 m3 = 2 tests for central dike construction

Fine Filter : Stockpile = 1 / 5000 m3, Placement 1 / 2000 m3 = 3 tests for central dike construction

**OWNER:**

**Report By:** Olivier Jacques, Dike Supervisor

DAILY CONSTRUCTION MEETING

CENTRAL DIKE



**AGNICO EAGLE**  
MEADOWBANK

**Date:** 4/25/2018

**Time:** 8:00

Presents:

**AEM:** Pier-Éric McDonal, Olivier Jacques

**SANA:** Pierre Gauthier, Sabin Larouche, Dany Pageau, Christopher Gilbert

**QA:** Marion Habersetzer

**QC:** Cédric Fillion-Tremblay

Health & Safety:

AEM do a reminder that when working on central dike to use MB DYKES channel and when working on foot around heavy equipment to have a portable radio at all time.

Make sure this information is transmitted to new workers arriving on-site

Daily Advance:

**SANA:**

Rockfill : 2 Haul truck HTR8 and HTR14, Wenco - 79 Loads = 6873 T. = +/- 3 700 m3

Rockfill Progression : Station - 0+342 @ 0+436 = 94m

**QA:**

**OWNER:**

General Planning/Comments:

**SANA:**

**QA:**

Granulometry Sample on Fine and Coarse Filter stockpile scheduled at 9h00 AM this morning.

**OWNER:**

Site Service compactor scheduled to be used for rockfill compaction next Friday

AEM confirms Sana to planned the footprint correction on downstream between station 0+965 @ 1+060. A specific backfill method to be planned by AEM and QA/QC.

**Report By:** Olivier Jacques, Dike Supervisor



DAILY CONSTRUCTION MEETING

CENTRAL DIKE



**AGNICO EAGLE**  
MEADOWBANK

**Date:** 4/26/2018

**Time:** 8:00

Presents:

**AEM:** Pier-Éric McDonal, Olivier Jacques

**SANA:** Pierre Gauthier, Sabin Larouche, Christopher Gilbert

**QA:** Marion Habersetzer

**QC:** Cédric Fillion-Tremblay

Health & Safety:

A lot of dust coming up from the north cell tailing yesterday was noticed and affected the visibility on the dike. To be monitored by the supervisors and the haul truck drivers.

Daily Advance:

**SANA:**

Rockfill : 2 Haul truck HTR8 and HTR14, Wenco - 82 Loads = 7134 T. = +/- 3 850 m3

Rockfill Progression : Station - 0+436 @ 0+534 = 98m

**QA:**

Samples on the coarse and fine filter stockpile done yesterday with the Sana loader.

**OWNER:**

General Planning/Comments:

**SANA:**

**QA:**

Stockpile granulometry results will be finished today.

**OWNER:**

Compaction planned for tomorrow.

An excavator is planned tomorrow to remove snow to expose the foundation between 0+965 @ 1+060. The dike footprint was done for elevation 143 instead of 145m.

**Report By:** Olivier Jacques, Dike Supervisor

DAILY CONSTRUCTION MEETING

CENTRAL DIKE



Date: 4/27/2018

Time: 8:00

Presents:

**AEM:** Pier-Éric McDonal, Olivier Jacques

**SANA:** Pierre Gauthier, Sabin Larouche, Serge Lalancette, Christopher Gilbert

**QA:** Marion Habersetzer

**QC:** Cédric Fillion-Tremblay

Health & Safety:

AEM do a reminder **AGAIN** that when working on central dike to use MBDYKES channel and when working on foot around heavy equipment to have a portable radio at all time.

Make sure this information is transmitted to new workers arriving on-site

A wolf was observed yesterday at the west road and vault intersection. Make sure to advise Environment department of any wildlife observed on the mining site.

Daily Advance:

**SANA:**

Rockfill : 2 Haul truck HTR8 and HTR14, Wenco - 82 Loads = 7134 T. = +/- 3 850 m3

Rockfill Progression : Station - 0+534 @ 0+624 = 90m

**QA:**

QA/QC will send the results of the granulometries on coarse and fine filter stockpiles tomorrow or after tomorrow.

**OWNER:**

General Planning/Comments:

**SANA:**

Sana is planning to start the downstream and upstream sloping next Monday. A backhoe operator is scheduled to arrived on-site Monday for this activity.

**QA:**

**OWNER:**

CPT01 is ready to use and it is parked at the north central dike end. The compaction is postponed to Sunday. We will continue backfilling from the north until we arrived at the first instrumental posts. The width between the upper slope and the instrumental post is around 8 meters. This will not impact significantly the production and it is safer to proceed like this.

The snow removal and foundation cleaning for the footprint correction on downstream between station 0+965 @ 1+060 will be done today.

**Report By:** Olivier Jacques, Dike Supervisor



DAILY CONSTRUCTION MEETING

CENTRAL DIKE



**AGNICO EAGLE**  
MEADOWBANK

**Date:** 4/28/2018

**Time:** 8:00

Presents:

**AEM:** Pier-Éric McDonal, Olivier Jacques, Alexandre Lavallée

**SANA:** Pierre Gautier, Sabin Larouche

**QA:** Marion Habersetzer

**QC:** Cédric Fillion-Tremblay

Health & Safety:

Radio call when entering by the north entrance for haul truck drivers.

Wildlife activity (wolf, caribous and wolverine) was reported yesterday on Vault Road. Advise Mine Dispatch or Environment Dept.

Daily Advance:

**SANA:**

Rockfill : 2 Haul truck HTR8 and HTR14, Wenco - 70 Loads = 6061 T. = +/- 3 150 m3

Rockfill Progression : Station - 0+624 @ 0+710 = 86m

**QA:**

QA/QC will send the results of the granulometries on coarse and fine filter stockpiles today.

Foundation approval footprint elv. 145 between 0+965 @ 1+060 downstream to be done today.

**OWNER:**

General Planning/Comments:

**SANA:**

Rockfill footprint elv. 145 between 0+965 @ 1+060 is planned for tomorrow. Only one haul truck will be required.

**QA:**

**OWNER:**

**Report By:** Olivier Jacques, Dike Supervisor

DAILY CONSTRUCTION MEETING

CENTRAL DIKE



**Date:** 4/29/2018

**Time:** 8:00

Presents:

**AEM:** Pier-Éric McDonal, Olivier Jacques, Alexandre Lavallée

**SANA:** Pierre Gautier, Sabin Larouche, Serge Lalancette

**QA:** Marion Habersetzer

**QC:** Cédric Fillion-Tremblay

Health & Safety:

Nothing to report

Wildlife activity (wolverine) around Vault Road and West Road.

Daily Advance:

**SANA:**

Rockfill : 2 Haul truck HTR6 and HTR14, Wenco - 61 Loads = 5307 T. = +/- 2745 m3

Rockfill Progression : Station - 0+710 @ 0+761 = 51m

14 loads for the footprint 143-145m between 0+965@1+060 and the access ramp. - 47 loads rockfill between 0+710 @ 0+761

**QA:**

Granulometries on coarse and fine filter stockpiles by QC are compliant. Analysis reports were sent yesterday.

Foundation approval footprint elv. 145 between 0+965 @ 1+060 downstream done yesterday. QA asked to revised the survey drawing from Sana, to be done shortly.

**OWNER:**

General Planning/Comments:

**SANA:**

The rockfill crest should reach the first instrumental post by the end of the day. Tomorrow, the rockfill will be done by the south entrance. Another backhoe operator is scheduled to arrive on-site tomorrow to start the downstream sloping. Once Sana have two backhoe operator, they will start the rockfill in the slope between 0+965 @ 1+060.

**QA:**

**OWNER:**

Due to snow falls yesterday morning, it was decided to backfill the foundation right after the approval. Only one layer was done and we switched on the crest rockfill after.

While doing the footprint rockfill, we started compacting the crest from the north.

**Report By:** Olivier Jacques, Dike Supervisor



DAILY CONSTRUCTION MEETING

CENTRAL DIKE



**AGNICO EAGLE**  
MEADOWBANK

**Date:** 4/30/2018

**Time:** 8:00

Presents:

**AEM:** Pier-Éric McDonal, Olivier Jacques

**SANA:** Pierre Gautier, Sabin Larouche

**QA:** Marion Habersetzer

**QC:** Cédric Fillion-Tremblay

Health & Safety:

Nothing to report

Daily Advance:

**SANA:**

Rockfill : 2 Haul truck HTR6 and HTR14, Wenco - 59 Loads = 5133 T. = +/- 2655 m3, 1.5 hrs (lost time for 0-3/4" Site service, 17h30 WA-600 at the crusher)

Rockfill Progression : Station - 0+761 @ 0+834 = 73m

Rockfill passed first instrumental post from the north. Backfill underneath the pumping pipe is done.

**QA:**

**OWNER:**

General Planning/Comments:

**SANA:**

Start the rockfill in the slope between 0+965 @ 1+060 today. Sana says it will take around 2 days to do it.

Currently doing the compaction on crest should be completed today or tomorrow morning.

**QA:**

QC/QA is concern about the till preparation. The stockpile at Sana crusher is frozen and don't have the required quantities

QA/QC will look for an alternative solution.

**OWNER:**

**Report By:** Olivier Jacques, Dike Supervisor

DAILY CONSTRUCTION MEETING

CENTRAL DIKE



**AGNICO EAGLE**  
MEADOWBANK

**Date:** 5/2/2018

**Time:** 8:00

Presents:

**AEM:** Patrice Gagnon, Olivier Jacques, Alexandre Lavallée, Roch Chabot

**SANA:** Pierre Gautier, Christopher Gilbert

**QA:** Marion Habersetzer, Samuel Barbeau

**QC:** Cédric Fillion-Tremblay

Health & Safety:

Nothing to report

Daily Advance:

**SANA:**

Rockfill : 2 Haul truck HTR6 and HTR14, Wenco - 67 Loads = T. = +/- 3015 m3

Rockfill Progression : Station - 0+996 @ 1+011 = 15m

Footprint Correction completed, Raising South Access Ramp 1m to fit with crest at elv.145 completed

**QA:**

**OWNER:**

General Planning/Comments:

**SANA:**

Sana will start the sloping on downstream today with one backhoe.

**QA:**

Foundation approval will be sent shortly. Sana sent the drawing yesterday.

Alternative solution for till will be to use 0-3/4" with bentonite since the till stockpile doesn't have the required quantities. Good till will be kept for the "plug" at Saddle Dam 3

**OWNER:**

AEM have dozer availability for the rockfill. DOZ06 will do the rockfill instead of the Sana D8T with GPS. Close survey follow-up for crest elevation by surveyor.

**Report By:** Olivier Jacques, Dike Supervisor



**DAILY CONSTRUCTION MEETING**

**Central Dike**

Date: 05/03/2018

Time: 8h00am



**AGNICO EAGLE**  
MEADOWBANK

**Presents:**

AEM: RC, PG, AL

SANA: CG, PG, PO,

QA: MH

QC: CFT

**Health & Safety:**

Slips, trips and falls; use 3 points contact and watch your footing.

**Daily Advance:**

SANA: Central Dike rockfill to 145.0: From 0+966 to 0+850 and from 1+011to 1+031 towards SD5

Sloping: Upstream from 0+170 to 0+650

QA:

OWNER:

**General Planning/Comments:**

SANA: Continue rockfill and sloping.

QA:

OWNER:

Report By: Roch Chabot

**DAILY CONSTRUCTION MEETING**

**Central Dike**



**AGNICO EAGLE**  
MEADOWBANK

Date: 05/04/2018

Time: 8h00am

**Presents:**

AEM: RC, PG, AL

SANA: PG, PO,

QA: MH

QC: CFT

**Health & Safety:**

Reviewed 992 loader and Sana pick-up near miss.

Reviewed radio procedure when approaching heavy equipment.

**Daily Advance:**

**SANA:** Central Dike rockfill to 145.0: From 0+950 to 0+871

Sloping: Upstream from 0+650 to 0+839

Downstream from 0+170 to 0+250

**QA:**

**OWNER:**

**General Planning/Comments:**

**SANA:** Finish 145.0 elevation rockfill, compaction, instrumentation.

Sloping: Continue downstream sloping

**QA:**

**OWNER:**

Report By: Roch Chabot

DAILY CONSTRUCTION MEETING

Central Dike



**AGNICO EAGLE**  
MEADOWBANK

Date: 05/05/2018

Time: 8h00am

Presents:

AEM: RC, PG,

SANA: PG, PO,

QA:

QC:

Health & Safety:

Nothing to report, radio communication is much better.

Daily Advance:

SANA: Central Dike rockfill to 145.0: From 0+871 to 0+835, from 1+018 to 1+034 and all the instrumentation

Sloping: Upstream from 0+839 to 0+950

Downstream from 0+250 to 0+350

Compaction from 0+825 to 1+034 and around the instrumentation

QA:

OWNER:

General Planning/Comments:

SANA: Complete upstream sloping from 0+950 to 1+034

Continue downstream sloping from 0+350 moving south.

QA:

OWNER:

Report By: Roch Chabot





DAILY CONSTRUCTION MEETING

Central Dike



**AGNICO EAGLE**  
MEADOWBANK

Date: 05/06/2018

Time: 8h00am

Presents:

AEM: PG

SANA: PO, CG, PG

QA: MH, SB

QC: CF

Health & Safety:

Nothing to report

Foggy in the morning, make sure to be well seen by the operators, communication

Daily Advance:

SANA: Sloping: Upstream from 0+940 to 1+038

Sloping: Downstream from 0+350 to 0+440 & 0+530 to 0+745

Transition CD to SD5 slopes completed.

QA:

OWNER:

General Planning/Comments:

SANA: Start coarse filters on both abutments (AMQ road closed)

Prepare setup to thaw the deposition fingers with frost fighters

QA:

OWNER: Weekly meeting at 2pm, 2nd floor coffee room

Report By: Patrice Gagnon



**DAILY CONSTRUCTION MEETING**

**SADDLE DAMS 3-4-5**

Date: May 8th 2015  
Time: 9:00



**AGNICO EAGLE**  
MEADOWBANK

**Presents:**

AEM: DG - RC

SANA: PD -

QA: MH - SB

QC: CF

**Health & Safety:**

- No concern

- Coactivity lots of traffic on dike

**Daily Advance:**

SANA: Coarse & fine filter 0+170 - 460 1+170 + 775  
0+170 - 350 1+138 + 835 + Compaction

~~function~~ slope

Start finger training with front fighter

QA:

OWNER:

**General Planning/Comments:**

SANA: - Continue coarse & fine filter + compaction

- move front fighters to next finger

QA: - Check compaction of filter

OWNER:

Report By: AG

**DAILY CONSTRUCTION MEETING**

**SADDLE DAMS 3 - CENTRAL DIKE 2018**



**AGNICO EAGLE**  
MEADOWBANK

Date: May 8th 2018

Time: 8:00

**Presents:**

AEM: PG-RC

SANA: LB-PO

QA: SB

QC: SB

**Health & Safety:**

- No concerns
- Check snowblows and access works

**Daily Advance:**

SANA: Remove 4 fingers

Continue 0-3/4" 0+380 @ 0+490 0-600 @ 0+550  
0-6" 0+644 @ 0+460 0+170 @ 0+390 2nd lift  
Compaction 1st lift

QA:

OWNER:

Compaction of fine on an angle

**General Planning/Comments:**

SANA: - Continue fine & coarse filter

- Compaction 1st lift

QA:

OWNER:

All good!

Report By:

AG



**DAILY CONSTRUCTION MEETING**

**SADDLE DAMS 3 - CENTRAL DIKE 2018**



**AGNICO EAGLE**  
MEADOWBANK

Date: May 9th 2018  
Time: Phco

**Presents:**

AEM: DC-AL-MA

SANA: LB-PO

QA: SB

QC: SB

**Health & Safety:**

- Nothing to report

- Fox spotted on the dike

**Daily Advance:**

SANA: Fine filter → 0+490 @ 0+550    0+600 @ 0+715    0+830 @ 0+715    0+935 - 0+9  
Coarse filter → 0+550 - 0+775 1st and/ 0+875 0+930    0+990 - 0+500

Compaction 1st lift completed

QA:

OWNER:

**General Planning/Comments:**

SANA: Continue fine filter

Continue coarse filters

Continue compaction

QA:

OWNER:

Need Plans daily by mail

Report By:

A. Ryan

**DAILY CONSTRUCTION MEETING**

**SADDLE DAMS 3 - CENTRAL DIKE 2018**



**AGNICO EAGLE**  
MEADOWBANK

Date: May 10<sup>th</sup> 2018  
Time: 8:00

**Presents:**

AEM: PG - MA  
SANA: LB - PO  
QA: SB  
QC: SB

**Health & Safety:**

- Nothing to report
- Access to Saddle Road tricky, to be reviewed by rline ops

**Daily Advance:**

SANA: Coarse filter: 0+500 @ 0+660 0+660 - 1+038 0+170 @ 0+335

- Fine filter: 0+500 @ 0+660 0+660 - 1+038 0+170 @ 0+335

QA: - Compaction to be done ideally on the same day

**OWNER:**

**General Planning/Comments:**

SANA: - Fine & coarse filter 3<sup>rd</sup> lift and start 4<sup>th</sup> lift

- Compaction

QA: - Sampling of materials ongoing

OWNER: - Nucleonsonometer shipment

Report By: AG

**DAILY CONSTRUCTION MEETING**

**SADDLE DAMS 3 - CENTRAL DIKE 2018**



**AGNICO EAGLE**  
MEADOWBANK

Date: May 11<sup>th</sup> 2018

Time: 0900

**Presents:**

AEM: DG-MA-FB - intern NB

SANA: DD-LB-RO

QA: SB

QC: SB

**Health & Safety:**

- Nothing to report
- Wheel shock on compactor

**Daily Advance:**

- SANA: - Fine filters: 3<sup>rd</sup> lift 0+660 @ 1+038 ↗  
- Coarse filters: 0+660 @ 0+940 ↘ Compactor 0+900

- QA: - Corrected compaction number of passes

**OWNER:**

**General Planning/Comments:**

- SANA: - Continue & complete 3<sup>rd</sup> filters lift  
- Start final 0+3/4 lift

- QA: - Continue Gravel

- OWNER: Will evaluate 0-3/4 in plug at 503

Report By: ADG

**DAILY CONSTRUCTION MEETING**

**SADDLE DAMS 3 - CENTRAL DIKE 2018**

Date: May 12<sup>th</sup> 2018  
Time: 8:00

**AGNICO EAGLE**  
MEADOWBANK

**Presents:**

AEM:

PG-MA-FB-MB

SANA:

LB-PG-OP

QA:

SB

QC:

- (Sep Mine)

**Health & Safety:**

- No Canavans

- Snow bank to be removed this morning at SD load entrance

**Daily Advance:**

SANA:

Fire: complete 3<sup>rd</sup> lift  
Coarse

0+940 @ 1+035

4<sup>th</sup> lift

0+170 @ 0+130

0+600 @ 0+715

0+170 @ 1+035

Confection 0+900 @ 0+135

QA:

Till plug required for SD3 → wait for August \*

Yes B & Maion

**OWNER:**

**General Planning/Comments:**

SANA:

Confection of fire & coarse filter

Fire filter & shaping 4<sup>th</sup> lift

QA:

**OWNER:**

Report By: AG



**DAILY CONSTRUCTION MEETING**

**SADDLE DAMS 3 - CENTRAL DIKE 2018**



**AGNICO EAGLE**  
MEADOWBANK

Date: May 13 2018  
Time: 8:00

**Presents:**

AEM: PG-FB -NB

SANA: LB-PO

QA: SB

QC: SB

**Health & Safety:**

- Spill 700 AT 806 at SANA crusher
- No other concerns

**Daily Advance:**

SANA: Fine filter : 0+330 @ 1+038

Coarse filter : finished

Compaction finished

QA:

OWNER:

Welder to fix the wheel shock stands on compactor 01

**General Planning/Comments:**

SANA: Spilling D/S

Compaction

Show removal on saddle road to widen it

QA:

OWNER:

Check for 304 availability

Report By: [Signature]

**DAILY CONSTRUCTION MEETING**

**SADDLE DAMS 3 - CENTRAL DIKE 2018**



**AGNICO EAGLE**  
MEADOWBANK

Date: May 14<sup>th</sup> 2018

Time: 8:00

**Presents:**

AEM: PG-MA-

SANA: DP-LB-PO

QA: SB

QC: SB

**Health & Safety:**

- No concerns

**Daily Advance:**

SANA: - Completed 0-3/4 sloping 1/5 @ +670 @ 1+038

- Started sloping 0/5 @ +430 @ +530 & @ +745 @ +835

- Started anchor trench 1+038 @ +825

**QA:**

- Completed remaining inspection

**OWNER:**

- Snow removal at Saddle Road

**General Planning/Comments:**

SANA: - Complete 0/5 2bpe

- Finish ditch anchor

- Crew change

**QA:**

- Crew change

**OWNER:**

Report By: 

**DAILY CONSTRUCTION MEETING**

**SADDLE DAMS 3 - CENTRAL DIKE 2018**



**AGNICO EAGLE**  
MEADOWBANK

Date: May 15<sup>th</sup> 2019

Time: 9:00

**Presents:**

AEM: DG-O -MA

SANA: DP-LB-SL

QA: MA

QC: SB

**Health & Safety:**

- Spill 10 L hydraulic oil at CD
- Blast at Pit E5

**Daily Advance:**

- SANA:
- Finish anchor for liner
  - Sloping d/s
  - S/D3 snow removal

QA:

OWNER:

**General Planning/Comments:**

- SANA:
- Finish sloping d/s
  - Remove muck run CD
  - Finish preparation snow removal

QA:

OWNER:

Report By: A. Gey

DAILY CONSTRUCTION MEETING

Central Dike



**AGNICO EAGLE**  
MEADOWBANK

Date: 5/16/2018

Time: 8h00am

Presents:

AEM: Olivier Jacques

SANA: Sabin Larouche, Luc Blanchette

QA: Marion Habersetzer

QC: Sébastien Blackburn

Health & Safety:

Nothing to report

A lot of dust coming from the tailing make sure to be well seen by the operators, communication, Wear protection masks if working outside (labor)

Daily Advance:

SANA: Sloping Downstream on Central Dike Completed

Snow Removal at Saddle Dam 3 to expose the LLDPE (40 % completed)

QA:

OWNER:

General Planning/Comments:

SANA: A dozer is required to rip the rockfill for the LLDPE Key trench at Saddle Dam 3. Dozer DO-1 is available and will be move at SD3 after the meeting.

No activity planned on dike tomorrow. Access road for dewatering between SD3 and SD4 to be built if the Culvert crew of Amaruq Road are still on-standby

because of the caribous on the road.

QA:

OWNER:

Report By: Olivier Jacques

DAILY CONSTRUCTION MEETING

Central Dike



**AGNICO EAGLE**  
MEADOWBANK

**Date:** 5/17/2018

**Time:** 8h00am

Presents:

**AEM:** Olivier Jacques, Frédéric Bolduc

**SANA:** Sabin Larouche, Luc Blanchette, Jeannot Gagnon

**QA:** Marion Habersetzer

**QC:** Sébastien Blackburn

Health & Safety:

Nothing to report

A lot of dust coming from the tailing make sure to be well seen by the operators, communication, Wear protection masks if working outside (labor)

Daily Advance:

**SANA:** Snow Removal at Saddle Dam 3 to expose the LLDPE completed

Used a dozer DOZ01 to rip the LLDPE anchor trench at Saddle Dam 3 (frozen materials)

Excavation of the LLDPE anchor trench at Saddle Dam 3

Clean-up of the LLDPE with blow pipes at Central Dike

**QA:**

**OWNER:**

General Planning/Comments:

**SANA:** No activity planned on dike tomorrow. Access road for dewatering Deposition S9 access road to be built.

because of the caribous on the road.

**QA:**

**OWNER:** AEM gives to SANA the go-ahead to start sloping the upstream and downstream at North Cell capping

AEM to provide all information required (drawings, DWG files, etc)

AEM confirms to Sana the 0-3/4" mixed with bentonite is cancelled and we will wait later in the summer to proceed with till.

Report By: Olivier Jacques



DAILY CONSTRUCTION MEETING

Central Dike



**AGNICO EAGLE**  
MEADOWBANK

**Date:** 5/18/2018

**Time:** 8h00am

Presents:

**AEM:** Olivier Jacques, Frédéric Bolduc, Pier-Eric McDonald, Justine Petrucci

**SANA:** Sabin Larouche, Luc Blanchette, Jeannot Gagnon, Dany Pageau, Mikael Levesque

**QA:** Marion Habersetzer

**QC:** Sébastien Blackburn

Health & Safety:

Nothing to report

Schedule a fit test for the ZTG (LLDPE subcontractor) personnel Monday afternoon.

Daily Advance:

**SANA:** Excavation of the LLDPE anchor trench at Saddle Dam 3 (3hrs Backhoe Cat 345DL)

**QA:**

**OWNER:**

General Planning/Comments:

**SANA:** Construction of the Deposition S9 access road today.

Complete the excavation of the LLDPE anchor trench at Saddle dam 3 tomorrow.

Finalize the LLDPE clean-up on central dike if necessary by QA.

Prepare all the materials (geotextile, LLDPE rolls) for the LLDPE subcontractor for Monday. Sana asks for a hyster to move a geotextil seacan from East Dike.

Sloping at North Cell caping plan to start tomorrow. Sana to check if they will start with a day and night shift. To be confirmed

Sana presented a modified central line axel for the north caping with the survey done yesterday to optizime the sloping efficiency. To be approved.

**QA:** Golder asks SANA for a surveyor for the upstream slope approval on Central Dike this afternoon.

**OWNER:** AEM asks SANA to do a follow-up for the rockfill elevation at north cell caping (Elv. 152.0) with their surveyor. (Assist the dozer operator)

The rockfill is 800mm to high at the moment where the dozer is. (Elv. 152.8m)

AEM asks SANA to provide with the modified central line stations for the daily follow-up.

Report By: Olivier Jacques

DAILY CONSTRUCTION MEETING

Central Dike



**AGNICO EAGLE**  
MEADOWBANK

**Date:** 5/20/2018

**Time:** 8h00am

Presents:

**AEM:** Olivier Jacques, Frédéric Bolduc, Pier-Eric McDonald, Justine Petrucci

**SANA:** Sabin Larouche, Luc Blanchette

**QA:** Marion Habersetzer

**QC:** Sébastien Blackburn

Health & Safety:

Nothing to report

A fit test for the ZTG (LLDPE subcontractor) personnel is scheduled Monday afternoon at 13h30 followed by SOP mine from 16h00 to 18h00.

Daily Advance:

**SANA:** Excavation of the LLDPE anchor trench at Saddle Dam 3 completed

Instrumental cable (thermistance) at Saddle Dam 3 downstream side was buried with reject before the water raise.

Snow removal at the upstream toe with excavators and a dozer at North Cell Internal Structure. Upstream Berms were pushed in the slope with a dozer.

Preparation of sand bags for the geotextile and LLDPE installation Central Dike

**QA:** QA/QC representatives noticed oversize boulders in the rockfill at the North Cell Internal Structure.

Rockfill was placed on an important layer of snow earlier at the beginning of the construction over a distance of 70m. To be removed.

Central Dike fine filter slope approval to be signed by AEM representative and SANA surveyor today.

**OWNER:** AEM sent an email to all the mine operation supervision to remind them about the oversize boulders and how to manage them (downstream slope).

AEM moved two geotextile seacans at the wide with the site service Hyster.

General Planning/Comments:

**SANA:** Sloping at North Cell capping plan on-going

Snow removal in the LLDPE anchor trench at Central dike tomorrow and snow removal on the actual LLDPE with labors.

Prepare all the materials (geotextile, LLDPE rolls) for the LLDPE subcontractor tomorrow.

**QA:** Golder asks SANA to do one or two pass of compactor roll on the Saddle Dam 3 fine filter slope and clean a 0-3/4" spill on the LLDPE.

**OWNER:**

Report By: Olivier Jacques

DAILY CONSTRUCTION MEETING

Central Dike



**AGNICO EAGLE**  
MEADOWBANK

Date: 5/21/2018

Time: 8h00am

Presents:

AEM: Olivier Jacques, Pier-Eric McDonald

SANA: Sabin Larouche, Luc Blanchette, Jeannot Gagnon

QA: Marion Habersetzer

QC: Sébastien Blackburn

Health & Safety:

Nothing to report

A fit test for the ZTG (LLDPE subcontractor) personnel is scheduled Monday afternoon at 13h30 followed by SOP mine from 16h00 to 18h00.

AEM asks to Sana to include in the Geotextile & LLDPE installation JHA a part for the handling of rolls from the site to the dike.

Daily Advance:

SANA: Preparation of sand bags for the geotextile and LLDPE installation Central Dike completed (250 bags)

LLDPE clean-up with an air compressor and snow removal on the liner at Central Dike

3:1 Sloping at North Cell - Internal Structures ( 2 backhoe) approximately 200m completed.

QA:

OWNER:

General Planning/Comments:

SANA: No work at North Cell - Internal Structure. Tomorrow to be confirmed with the manpower of the road.

Snow removal in the LLDPE anchor trench at Central dike and snow removal on the actual LLDPE with labors on-going.

Prepare all the materials (geotextile, LLDPE rolls) for the LLDPE subcontractor on-going. Sana is moving geotextile rolls on central dike crest.

ZTG personnels are arriving on-site today. SOP and Fit test all afternoon. Geotextile installation to start tomorrow.

QA: QA/QC representatives noticed Haul truck driver dumping their loads into the slope at the north cell capping not on top of the crest.

OWNER: AEM spoke with the dozer operator to advise him the proper way to do the rockfill. The message was also pass to all the supervisor on-site so they can advise haul truck drivers.

Report By: Olivier Jacques

DAILY CONSTRUCTION MEETING

Central Dike



**AGNICO EAGLE**  
MEADOWBANK

Date: 5/22/2018

Time: 8h00am

Presents:

AEM: Olivier Jacques, Pier-Eric McDonald, Frédéric Bolduc

SANA: Sabin Larouche, Luc Blanchette, Dany Pageau

QA: Marion Habersetzer

QC: Cédric Tremblay

Health & Safety:

Hydraulic Oil Spill Sana Shop 20 liters - Towerlight truck hydraulic pump failure. SANA reported it to ENV Depart.

The LLDPE & Geotextile Installation JHA was presented to the workers this morning. A copy with the signed page to be sent to AEM,

A ZTG worker is going back home today because he is not compliant to mine regulations. (E-Learning not completed and doesn't speak in English)

AEM notice this morning a surveyor in the downstream slope at central dike doing survey. AEM advise Sana it is not permitted and if survey needs to be done we will do it with the SANA GPS backhoe.

Daily Advance:

SANA: Move LLDPE and Geotextile rolls on top of Central Dike with a Zoom Boom.

LLDPE clean-up on the liner at Central Dike

3:1 Sloping at North Cell - Internal Structures ( 1 backhoe) started at 16h00.

Snow removal in the LLDPE anchor trench at Central Dike and Saddle dam 3

QA:

OWNER:

General Planning/Comments:

SANA: North Cell - Internal Structure 3:1 sloping on-going this morning with one backhoe. AEM dozer when it have down-time to push upstream berms into the slope.

Installation of the Geotextile at Central Dike by Sana subcontractor - ZTG today and tomorrow

Prepare all the materials (geotextile, LLDPE rolls) for the LLDPE subcontractor on-going.

QA:

OWNER: AEM to make sure subcontractor tools crate to arrive on-site tomorrow. Contact Denis Caron CTMN Val d'Or

Report By: Olivier Jacques

DAILY CONSTRUCTION MEETING

Central Dike



**AGNICO EAGLE**  
MEADOWBANK

Date: 5/22/2018

Time: 8h00am

Presents:

AEM: Olivier Jacques, Pier-Eric McDonald, Frédéric Bolduc

SANA: Sabin Larouche, Pierre Gauthier, Dany Pageau

QA: Marion Habersetzer

QC: Cédric Tremblay

Health & Safety:

Nothing to report

Daily Advance:

SANA: Central Dike - Move LLDPE and Geotextile rolls on crest with a Zoom Boom.

Central Dike - LLDPE clean-up on the liner

North Cell - Rockfill 1+767 this morning, 3:1 Sloping at approx. 2+200

Central Dike - Geotextile Installation 0+810 @ 1+060 (Stop at 14h30 due to snow forecast in the night)

QA:

OWNER:

General Planning/Comments:

SANA: North Cell -3:1 sloping. 3 Loads of NAG and 2 Loads of Ore-To-Waste were dumped in the rockfill. Removal is on-going with 1x100T and Sana 345

Installation of the Geotextile at Central Dike by Sana subcontractor

QA:

OWNER: AEM asks what is the slop % of the ramp between elv. 152 to 154 at North Cell. It is decided to go with a 8 to 10% transition ramp.

Report By: Olivier Jacques

DAILY CONSTRUCTION MEETING

Central Dike



**AGNICO EAGLE**  
MEADOWBANK

Date: 5/22/2018

Time: 8h00am

Presents:

**AEM:** Olivier Jacques, Pier-Eric McDonald, Frédéric Bolduc

**SANA:** Pierre Gauthier

**QA:** Marion Habersetzer

**QC:** Cédric Tremblay

Health & Safety:

**Blast at Vault 18h30**

Daily Advance:

**SANA:** Central Dike - Geotextile installation 0+810 @ 0+765

Central Dike - LLDPE clean-up on the liner

North Cell - Rockfill 1+715 this morning, 3:1 Sloping at 2+138

Central Dike - LLDPE installation starting around 1+040, ZTG received their tools crate yesterday afternoon. LLDPE fusion test completed.

**QA:** Central Dike - LLDPE fusing test approved

OWNER:

General Planning/Comments:

**SANA:** North Cell - 3:1 sloping all day

Central Dike - LLDPE installation

**QA:** QA/QC representatives ask to have the calibration certificat of the instrument used for LLDPE fusion test. AEM will ask SANA.

**OWNER:** AEM to send the as-built for the correction of the footprint elv. 145 at Central Dike to QA/QC representatives. There is a 0.6m width of rockfill missing at the beginning of the correction at the north. No corrective measure anticipated but it needs to be documented.

**Report By:** Olivier Jacques



DAILY CONSTRUCTION MEETING

Central Dike



**AGNICO EAGLE**  
MEADOWBANK

Date: 5/25/2018

Time: 8h00am

Presents:

AEM: Olivier Jacques, Pier-Eric McDonald, Alexandre Lavallée

SANA: Pierre Gauthier

QA: Marion Habersetzer

QC: Cédric Tremblay

Health & Safety:

Blast at BB phaser 12h45PM

AEM ask to SANA to block the access road at Saddle dam 3 on the upstream at the bottom. Water is raising and the road is no more used.

QC representative asks what is the good channel when at North Cell. PortOp is the channel to use.

Daily Advance:

SANA: Central Dike - LLDPE installation from 1+060 to 0+947 (113meters)

North Cell - Rockfill 1+640 this morning, 3:1 Sloping at 1+989

QA:

OWNER:

General Planning/Comments:

SANA: North Cell - 3:1 sloping all day

Central Dike - LLDPE installation, LLDPE horizontal welds 9 reworks to do this morning. A little layer of ice is on the geotextile this morning.

QA: QA confirmed yesterday that it is not necessary to correct the missing quantities at Central Dike between 0+950 @ 0+975. The 1.5H : 1V is respected (no stability issue). It will be corrected during the next raise. To be documented in the as-built drawing.

QA representative asks to compact the LLDPE anchor trench once it is backfill over the LLDPE. (4 passes)

OWNER:

Report By: Olivier Jacques

DAILY CONSTRUCTION MEETING

Central Dike



**AGNICO EAGLE**  
MEADOWBANK

Date: 5/26/2018

Time: 8h00am

Presents:

**AEM:** Olivier Jacques, Pier-Eric McDonald, Justine Petrucci

**SANA:** Pierre Gauthier, Sabin Larouche

**QA:** Marion Habersetzer

**QC:** Cédric Tremblay

Health & Safety:

**Blast at Vault phaser 12h45PM**

**Nothing to Report**

Daily Advance:

**SANA:** Central Dike - LLDPE installation from 0+947 to 0+936 (11meters, started at 15h00), 9 horizontal welds repaired and approved.

**North Cell - Rockfill 1+605 this morning, 3:1 Sloping 1+989 to 1+860**

QA:

OWNER:

General Planning/Comments:

**SANA:** North Cell - 3:1 sloping all day, Sloping at North Cell will stop shortly because of the rockfill advance. SANA go faster sloping than the rockfill.

**to be re-evaluated when to restart the sloping.**

**Central Dike - No work anticipated today due to weather, ZTG and SANA on stand-by.**

QA:

OWNER:

**Report By:** Olivier Jacques

DAILY CONSTRUCTION MEETING

Central Dike



**AGNICO EAGLE**  
MEADOWBANK

**Date:** 5/27/2018

**Time:** 8h00am

Presents:

**AEM:** Olivier Jacques, Pier-Eric McDonald, Alexandre Lavallee

**SANA:** Pierre Gauthier, Sabin Larouche

**QA:** Marion Habersetzer

**QC:** Cédrick Tremblay

Health & Safety:

**No Blast**

**Nothing to Report**

Daily Advance:

**SANA:** Central Dike - No activity due to the weather (strong wind, icy rain)

North Cell - Rockfill 1+564 this morning, 3:1 Sloping 1+860 to 1+678 ( we skipped the tundra island area, 96m). Sloping stopped at 15h30 yesterday.

Sloping was too close to the rockfill advance. (>100m)

**QA:**

**OWNER:**

General Planning/Comments:

**SANA:** North Cell - No activity, Sloping is stopped for minimum 1 week until the rockfill advance.

Central Dike - Ice layer on the geotextile this morning. In order to progress, remove the problematic geotextile and put new layer so we can install the LLDPE.

**QA:**

**OWNER:** AEM ask to SANA to stake out all the north cell rockfill alignment limit on the tailing before it starts to melt.

AEM to confirm to SANA if we proceed with the compaction of the rockfill platform at North Cell while sloping activity are stopped. At least the section,

where the rockfill will be raise from 152m to 154. (+/- 1000m).

Report By: Olivier Jacques

DAILY CONSTRUCTION MEETING

Central Dike



**AGNICO EAGLE**  
MEADOWBANK

**Date:** 5/28/2018

**Time:** 8h00am

Presents:

**AEM:** Olivier Jacques, Pier-Eric McDonald, Alexandre Lavallee, Justine Petrucci

**SANA:** Pierre Gauthier, Sabin Larouche

**QA:** Marion Habersetzer

**QC:** Cédric Tremblay

Health & Safety:

**Blast at BB Phaser 18:30**

**Incident :** Yesterday we had an incident on central dike. A labor was sweeping the snow on the geotextile. He slipped and slightly twisted his ankle. Light Duty work

**Report is in the Intelx. No investigation needed. Remind workers about the risks when going in the slope.**

Daily Advance:

**SANA:** Central Dike - geotextile and LLDPE installation AM, No activity in PM due to strong wind. LLDPE at 0+909

North Cell - Rockfill 1+535 this morning, 3:1 Sloping in PM 1+678 to 1+638

**QA:**

**OWNER:**

General Planning/Comments:

**SANA:** North Cell - No activity, Sloping is stopped for minimum 1 week until the rockfill advance.

Central Dike - Geotextile and LLDPE installation

**QA:**

**OWNER:** AEM needs to check with QA representatives what action to take for the tundra island rockfill portion before next rockfill lift.

AEM ask SANA to evaluate the coarse and fine filter quantities with the current as-built and modified alignment.

AEM ask SANA to paint mark the top slope on the DS where the rockfill will be raise from 152 to 154 to see if the berm needs to be remove for compaction

AEM ask SANA to mark the top slope on the US at the East entrance of the north cell to evaluate the corrective measure for the snow underneath the rockfill.

Report By: Olivier Jacques

DAILY CONSTRUCTION MEETING

Central Dike



**AGNICO EAGLE**  
MEADOWBANK

**Date:** 5/28/2018

**Time:** 8h00am

Presents:

**AEM:** Olivier Jacques, Pier-Eric McDonald

**SANA:** Pierre Gauthier, Patrice Ouellet

**QA:** Marion Habersetzer

**QC:** Cédric Tremblay

Health & Safety:

**No blast**

**Nothing to report**

Daily Advance:

**SANA:** Central Dike - LLDPE installation 0+909 @ 0+760, Geotextile installation 0+790 @ 0+760

North Cell - Rockfill 1+500

**QA:**

**OWNER:**

General Planning/Comments:

**SANA:** North Cell - No activity

Central Dike - Geotextile and LLDPE installation, Compaction of the LLDPE anchor trench

Snow started to fall at the moment. The work may be stopped depending on the weather.

**QA:**

**OWNER:** AEM gives to SANA the go-ahead to proceed with the compaction of the 152.0m platform. QA representatives agreed to not compact the haul truck traffic lane since it is already compacted by the loaded haul truck and the dozer.

AEM talked with the Env Department this morning for the cyanide burn area. It is decided to do an extension with the rockfill to relocate the burn area onto the rockfill. SANA will redo the drawing to include that aspect and will send it to AEM. QA representatives don't see any issue to proceed like this.

Report By: Olivier Jacques

DAILY CONSTRUCTION MEETING

Central Dike



**AGNICO EAGLE**  
MEADOWBANK

**Date:** 5/30/2018

**Time:** 8h00am

Presents:

**AEM:** Olivier Jacques, Alexandre Lavallee, Patrice Gagnon, Nicholas Blackburn, Roch Chabot

**SANA:** Pierre Gauthier, Patrice Ouellet

**QA:** Samuel Barbeau

**QC:** Cédric Tremblay

Health & Safety:

**Blast Pit E5 12h45PM.** Make sure to give your blast clearance to the Drill&Blast supervisor

**Nothing to report**

Daily Advance:

**SANA:** North Cell - No rockfill, 3:1 Sloping 1+625 @ 1+580, Platform correction for compaction between 2+700 @ 2+290

Central Dike - Geotextile and LLDPE installation 0+769 @ 0+741, 0+825 @ 0+741 Horizontal welding and test

**QA:**

**OWNER:**

General Planning/Comments:

**SANA:** Central Dike - No activity this morning due to the strong wind. No LLDPE or Geotextile installation.

North Cell - Compaction starting at 2+700. On-going. No rockfill

**QA:**

**OWNER:** AEM reiterate to SANA to send them the calibration certificate of the tensiometer used by ZTG for their tests.

Report By: Olivier Jacques



**DAILY CONSTRUCTION MEETING**

**Central Dike**



**AGNICO EAGLE**  
MEADOWBANK

Date: 2018-05-31

Time: 8h00am

**Presents:**

AEM: Olivier Jacques, Alexandre Lavallee, Patrice Gagnon, Nicholas Blackburn, Roch Chabot

SANA: Pierre Gauthier, Patrice Ouellet, Christopher Gilbert

QA: Samuel Barbeau

QC: Cédric Tremblay

**Health & Safety:**

Blast in BB Phaser, Make sure to give your blast clearance to the Drill&Blast supervisor

Nothing to report

**Daily Advance:**

SANA: North Cell - No rockfill, Compaction from 1+625 to 2+625

Central Dike - No activity due to strong wind

QA:

OWNER:

**General Planning/Comments:**

SANA: Central Dike - Start trenching on the upstream side and snow clean-up by cyanide burn

North Cell - Compaction starting at 2+700. On-going. No rockfill

QA:

OWNER: AEM reiterate to SANA to send them the calibration certificate of the tensiometer used by ZTG for their tests.

Report By: Roch Chabot

DAILY CONSTRUCTION MEETING

Central Dike



**AGNICO EAGLE**  
MEADOWBANK

**Date:** 6/18/2018

**Time:** 8h00am

Presents:

**AEM:** Olivier Jacques, Pier-Eric McDonald, Justine Petrucci

**SANA:** Sabin Larouche

**QA:**

**QC:**

Health & Safety:

**No Blast**

**Nothing to report**

Daily Advance:

**SANA:** North Cell - Start of the Coarse Filter Bacfill 2+542 @ 2+437, 105m, 22 loads for a production of 79m3/hr

North Cell - 3:1 Sloping and snow removal

North Cell - Reworks on the access over the dewatering pipe at the entrance of the north cell to smooth it.

**QA:**

**OWNER:**

General Planning/Comments:

**SANA:** Continue the coarse filter backfill and the 3:1 Sloping

Foundation Preparation at the tundra Island to expose the rock

SANA will look to optimize the coarse filter backfill team and see if it is benefict to add a 2nd truck today.

**QA:**

**OWNER:** The tailing near the cyanide burn area is at the evelation 148.0 @ 148.5m. For the compaction efficiency, it is decide to go with two lift there. Elv. 148 @ 150 and 150 @ 152. Surveyor need to do a follow-up to ramp down at elv. 150.

AEM needs to move the pipe coming from the china sump because the deposition point is 50m in front of the actual rockfill front. This needs to be done as soon as possible.

Report By: Olivier Jacques

DAILY CONSTRUCTION MEETING

Central Dike



**AGNICO EAGLE**  
MEADOWBANK

**Date:** 6/19/2018

**Time:** 8h00am

Presents:

**AEM:** Olivier Jacques, Pier-Eric McDonald

**SANA:** Sabin Larouche, Luc Blanchette

**QA:**

**QC:**

Health & Safety:

**Blast :** 12h45 PM Vault

**Nothing to report**

Daily Advance:

**SANA:** North Cell - Coarse Filter Backfill 2+437 @ 2+280, 157m, 34 loads for a production of 81m3/hr

North Cell - 3:1 Sloping

Central Dike - Till Preparation

**QA:**

**OWNER:** AEM is moving the discharge point of the china sump near saddle dam 1. Sana to provide a zoom boom and an excavator operator all day.

3 sections of 200ft of 8" pipes were brought to the north cell by Operation during the night.

General Planning/Comments:

**SANA:** North Cell - Continue the coarse filter backfill

North Cell - Foundation Preparation at the toundra Island to expose the rock tomorrow

**QA:**

**OWNER:**

Report By: Olivier Jacques

DAILY CONSTRUCTION MEETING  
NORTH CELL - INTERNAL STRUCTURE



**AGNICO EAGLE**  
MEADOWBANK

**Date:** 6/22/2018

**Time:** 8h00am

Presents:

**AEM:** Olivier Jacques, Pier-Eric McDonald

**SANA:** Sabin Larouche, Pierre Gautier

**QA:** Marion Habersetzer

**QC:** Hugues Potvin

Health & Safety:

**Blast :** No blast

Near Miss was reported yesterday by the Dewatering Crew. A pick-up passed near the excavator working on Central Dike without advise the operator.

Daily Advance:

**SANA:** North Cell - Coarse Filter Backfill 1+930 @ 1+715, 215m, 46 loads for a production of 110m<sup>3</sup>/hr with 2 trucks

North Cell - Coarse Filter Compaction between 2+524 @ 2+450, 92m

North -Cell - 3:1 Slope 1+860 @ 1+750

Rockfill from Pit E5 during night shift, 44 loads for 5935 tonnes

QA:

**OWNER:** AEM asked Sana this morning to do 100m of fine filter and compact it to see the results.

General Planning/Comments:

**SANA:** North Cell - Continue the coarse filter compaction

North Cell - Fine Filter backfill and compaction

QA:

OWNER:

Report By: Olivier Jacques

DAILY CONSTRUCTION MEETING

NORTH CELL - INTERNAL STRUCTURE



**AGNICO EAGLE**  
MEADOWBANK

**Date:** 6/23/2018

**Time:** 8h00am

Presents:

**AEM:** Olivier Jacques, Pier-Eric McDonald, Alexandre Lavallee

**SANA:** Sabin Larouche, Pierre Gautier

**QA:** Marion Habersetzer

**QC:**

Health & Safety:

**Blast :** Pit E5, 12h45 PM, 5046680

**Nothing to Report**

Daily Advance:

**SANA:** Coarse Filter Backfill - 1+715 @ 1+570 and 1+425 @ 1+480, 200m, 32 loads of 6" NPAG 800m3, Prod = 167 m3/hr (two shovel, 3 HTR)

Compaction of the coarse filter slope between 2+450 @ 1+805, 645m

Fine Filter Backfill - 2+542 @ 2+475, 67m, 17 loads of 0-3/4" 425m3, Prod = 94m3/hr

Compaction of the fine filter slope between 2+542 @ 2+475, 67m

**QA:** Samples test (granulometry) on-going on the coarse and fine filter

**OWNER:** Rockfill from PIT E5, Day Shift Only, 15 Loads 2040 Tonnes

AEM changed before yesterday the alignment of the North Cell capping to avoid the cyanide burn area due to the presence of scrap

General Planning/Comments:

**SANA:** North Cell - Coarse Filter backfill with 2 excavators

North Cell - Fine Filter backfill

North Cell - Continue the coarse filter compaction

Survey on-going on the 0-6" stockpile to do an update on the remaining quantities vs remaining backfill to do

**QA:** QA/QC to do granulometry test on a old 0-6" stockpile at the Sana crusher

**OWNER:** Compaction to be done on the rockfill at Elv. 150m under the berm downstream and upstream and on each side of the traffic lane of the Haul truck.

Berms will be pushed in the slope and boulders will be placed on each side of the traffic lane for the Haul truck driver.

AEM checked with there Geology department to call a part of the 5046670 pit E5 as NPAG even they haven't received the result yet.

The rockfill start to be critical since no rockfill from Pit E5 is going to North Cell Capping.

Report By: Olivier Jacques

DAILY CONSTRUCTION MEETING  
NORTH CELL - INTERNAL STRUCTURE



**AGNICO EAGLE**  
MEADOWBANK

**Date:** 6/24/2018

**Time:** 8h00am

Presents:

**AEM:** Olivier Jacques, Pier-Eric McDonald

**SANA:** Sabin Larouche, Pierre Gautier

**QA:** Marion Habersetzer

**QC:** Hugues Potvin

Health & Safety:

**Blast :** Pit E5, 12h45 PM,

A lot of dust at the north cell this morning, stay out of the dust when going out of equipment/pic-up truck

Daily Advance:

**SANA:** Coarse Filter Backfill - 1+480 @ 1+570 & 1+420 @ 1+425, 95 m, 21 loads of 6" NPAG 525m3, Prod = 141 m3/hr (2 exc.) = 50m3/hr (1 exc.)

Compaction in coarse filter slope between 1+805 @ 1+420, 385m

Fine Filter Backfill - 1+980 @ 2+065 & 2+460 @ 2+475, 100 m, 32 loads of 0-3/4" NPAG 800m3, Prod = 133 m3/hr (2 exc.) = 88m3/hr (1 exc.)

Rockfill from PIT E5, Night Shift Only, 40 Loads 5440 Tonnes

Note : 2 hours lost with excavator 13-0301 on coarse compaction for fixing the A/C

QA:

**OWNER:** Rockfill from PIT E5, Night Shift Only, 40 Loads 5440 Tonnes

General Planning/Comments:

**SANA:** North Cell - Fine Filter backfill with 2 excavators

Sana surveyor to check the rockfill platform width if everything is good at the front.

Sana-AEM to check the best work method for the area after 2+777 where the road access is.

North Cell - Compaction of the rockfill at Elv. 150 planned tomorrow.

**QA/QC:** QC to perform a gradation test everyday on fine filter when doing fine filter backfill instead of 1 per 1000m3.

QC ask to have the cumulative quantites of coarse filter done since the beginning of the activity. A drawing will be sent by Sana shortly.

**OWNER:** AEM to confirm the east and west limit where to stop the rockfill.

Report By: Olivier Jacques



DAILY CONSTRUCTION MEETING  
NORTH CELL - INTERNAL STRUCTURE



**AGNICO EAGLE**  
MEADOWBANK

**Date:** 6/25/2018

**Time:** 8h00am

Presents:

**AEM:** Olivier Jacques, Pier-Eric McDonald

**SANA:** Sabin Larouche, Pierre Gautier, Christopher Gilbert, Marie-Ève Giguère

**QA:** Marion Habersetzer

**QC:** Hugues Potvin

Health & Safety:

**Blast :** No Blast

Really slippery and muddy this morning due to the last night rain. Pay attention when driving.

Daily Advance:

**SANA:** Fine Filter Backfill - 1+980 @ 1+835 & 2+460 @ 2+305, 300 m, 71 loads of 0-3/4" NPAG 1775m3, Prod = 169 m3/hr (2 exc.)

**Note :** LOAD12 down, at 8h30, Parking break issue, We took Sana loader #278 from Sana shop.

QA:

**OWNER:** Rockfill from PIT E5, Day/Night, 92 Loads 12512 Tonnes

3W meeting after the daily meeting. Yesterday meeting was postponed.

General Planning/Comments:

**SANA:** North Cell - Fine Filter backfill with 1 excavators

North Cell - Compaction of the rockfill at Elv. 150 on-going

Sana crew-change today

Move the geotextile seacan on central dike to Saddle Dam 3

**QA/QC:** QC to perform a gradation test everyday on fine filter when doing fine filter backfill instead of 1 per 1000m3. **Two test to be done if 2 excavators backfilling**

**OWNER:** Geotechnical Engineer to provide south east and south west limit for the rockfill today

Report By: Olivier Jacques

DAILY CONSTRUCTION MEETING

NORTH CELL - INTERNAL STRUCTURE



**AGNICO EAGLE**  
MEADOWBANK

**Date:** 6/26/2018

**Time:** 8h00am

Presents:

**AEM:** Olivier Jacques, Pier-Eric McDonald

**SANA:** Pierre Gautier, Patrice Ouellet

**QA:** Marion Habersetzer

**QC:** Hugues Potvin

Health & Safety:

**Blast :** No Blast

**Use of radio channel :** MB Dykes when working inside the bumper near the slope and PortOp when circulating in the mine haul truck traffic lane

Daily Advance:

**SANA:** Fine Filter Backfill - 2+305 @ 2+040, 265 m, 47 loads of 0-3/4" NPAG 1175 m3

Rockfill Compaction 1+320 @ 1+220

Built 2 pick-up truck access for E&I dewatering crew at 2+245 downstream

6 loads of 0-2" at AEM Dispatch

QA:

**OWNER:** Rockfill from PIT E5, Day/Night, 101 Loads 13589 Tonnes, 1+150 this morning the rockfill started to turn the edge near the cyanide burn area

General Planning/Comments:

**SANA:** North Cell - Coarse Filter backfill around 2+600

North Cell - Compaction of the rockfill at Elv. 150

North Cell - 3:1 rockfill sloping around 2+800

QA/QC:

**OWNER:** AEM presents the new deposition plan sent yesterday according to the Water and Tailing Engineer

New Rockfill boundaries : Elv. 152.0 - 1+100 @ 3+260, Elv. 154.0 - 1+660 @ 2+750

A coordination needs to be in-place with the E&I Dewatering crew for the pipe at 2+750 during the rockfill and coars/fine filter backfill.

Report By: Olivier Jacques

**DAILY CONSTRUCTION MEETING**  
**NORTH CELL - INTERNAL STRUCTURE**



**AGNICO EAGLE**  
MEADOWBANK

Date: 2018-06-28

Time: 8h00am

**Presents:**

AEM: Roch Chabot, Alexandre Lavallee

SANA: Patrice Ouellet

QA: Marion Habersetzer

QC: Hugues Potvin

**Health & Safety:**

Blast : No Blast

Dusty conditions, call for water truck if needed

**Daily Advance:**

SANA: Fine Filter Backfill - 6 loads

Coarse filter - 34 loads

Slope : 2+815 to 2+860

Shaved 154 elevation to 152 elevation from 2+840 to 2+980

Rockfill Compaction 1+320 @ 1+220

QA:

OWNER: No rockfill activities because of lack of material

**General Planning/Comments:**

SANA: North Cell - Coarse Filter backfill compaction

North Cell - 3:1 rockfill sloping

North Cell - Fine filter

QA/QC:

OWNER:

Report By: Roch Chabot

**DAILY CONSTRUCTION MEETING**  
**NORTH CELL - INTERNAL STRUCTURE**



**AGNICO EAGLE**  
MEADOWBANK

Date: 2018-06-29

Time: 8h00am

**Presents:**

AEM: Roch Chabot, Alexandre Lavallee, Nicolas

SANA: Patrice Ouellet

QA: Marion Habersetzer

QC: Hugues Potvin

**Health & Safety:**

Blast : No Blast

Dusty conditions, call for water truck if needed

**Daily Advance:**

SANA: Fine Filter Backfill - 43 loads

Slope compaction

Slope : 2+815 to 2+860

QA:

OWNER: Rockfill from Pit E5: 16 loads

**General Planning/Comments:**

SANA: North Cell - Coarse Filter backfill compaction

North Cell - 3:1 rockfill sloping

North Cell - Fine filter

QA/QC:

OWNER: Rockfill from Pit E5: Finish 150 elevation and move to 152 elevation

Report By: Roch Chabot

**DAILY CONSTRUCTION MEETING**  
**NORTH CELL - INTERNAL STRUCTURE**



**AGNICO EAGLE**  
MEADOWBANK

Date: 2018-06-30

Time: 8h00am

**Presents:**

AEM: Roch Chabot, Alexandre Lavallee, Nicolas Blackburn

SANA: Patrice Ouellet, Pierre Gauthier

QA: Marion Habersetzer

QC: Hugues Potvin

**Health & Safety:**

Blast : No Blast

Co-activity, use good communication

**Daily Advance:**

SANA: Fine Filter Backfill - 23 loads from 1+330 to 1+260 and from 1+595 to 1+550

Slope rockfill from 1+140 to 1+340 at elevation 150

Compaction downstream 1+240 to 1+270 at elevation 150

Compaction coarse filter from 1+340 to 1+270 at elevation 150

Coarse filter 38 loads from 1+340 to 1+270 at elevation 152

Fine filter from 1+330 to 1+260 and from 1+595 to 1+550 at elevation 152

QA:

OWNER: Rockfill from Pit E5: 120 loads to 1+340 at elevation 152

**General Planning/Comments:**

SANA: Downstream compaction

Coarse and fine filter at elevation 150

QA/QC:

OWNER: Rockfill from Pit E5 ongoing on elevation 152

Report By: Roch Chabot

**DAILY CONSTRUCTION MEETING**  
**NORTH CELL - INTERNAL STRUCTURE**



**AGNICO EAGLE**  
MEADOWBANK

Date: 2018-07-01

Time: 8h00am

**Presents:**

AEM: Roch Chabot, Alexandre Lavallee, Nicolas Blackburn

SANA: Patrice Ouellet, Pierre Gauthier

QA: Marion Habersetzer

QC: Hugues Potvin

**Health & Safety:**

Blast : No Blast

Don't leave the work area you are assigned to without your supervisor knowing.

**Daily Advance:**

**SANA:** Fine Filter Backfill - 18 loads from 1+260 to 1+100 at elevation 150

Slope rockfill from 1+100 to 1+340 at elevation 150

Compaction downstream 1+240 to 1+270 at elevation 150

Compaction coarse filter from 1+270 to 1+100 at elevation 150

Coarse filter- 38 loads from 1+270 to 1+100 at elevation 150

Fine filter from 1+330 to 1+260 and from 1+595 to 1+550 at elevation 152

**QA:**

**OWNER:** Rockfill from Pit E5: 120 loads to 1+200 at elevation 152

**General Planning/Comments:**

**SANA:** Complete fine filter compaction at 150 elevation

Complete touch up for rockfill at elevation 152

**QA/QC:**

**OWNER:** Rockfill from Pit E5 ongoing on elevation 152

Report By: Roch Chabot

**DAILY CONSTRUCTION MEETING**

**SADDLE DAMS 3 - CENTRAL DIKE 2018** North Cell



**AGNICO EAGLE**  
MEADOWBANK

Date: 2018-07-02

Time: 8h00

**Presents:**

AEM: AL, NB

SANA: PO, P

QA: MH

QC: HP

**Health & Safety:**

- Sampling of Asbestos / Silica / noise for QC
- Tomorrow also sampling on NC - SANA employee

→ Spill ± 10 L loader - hydraulic hose leak  
↳ Mine

**Daily Advance:**

SANA: → Rockfill slope 2+860 → 2+975

→ FF (15d) 1+080 → 1+100

→ FF comp. 1+335 → 1+100

→ FF (15d) 2+660 → 2+630

QA: → RF (15d) → 1+160

**OWNER:**

**General Planning/Comments:**

- SANA:
- complete FF up to 2+820
  - ~ FF in 2+620 zone
  - compaction 2+820 → 2+...

**QA:**

4000m<sup>3</sup> CF left in 2018 stockpile

**OWNER:**

Pipe EI → Meet with Nelson  
Evaluate EDB rockfill needed

Report By: 



**DAILY CONSTRUCTION MEETING**

**SADDLE DAMS 3 - CENTRAL DIKE 2018**

North cell ink struct



**AGNICO EAGLE**  
MEADOWBANK

Date: July 3<sup>rd</sup>, 2018

Time: 8h00

**Presents:**

AEM: AL, JG

SANA: LB, M-AB

QA: MH, SB

QC: HP, DR

**Health & Safety:**

&

→ keep distance from Shovel - compactor setup. In case sign break.

**Daily Advance:**

SANA: Sloping 2+975 3+070

FF (152) 1+550 1+320 1+630 1+610

61 loads

→

& RF

QA:

OWNER:

**General Planning/Comments:**

SANA: → compact. FF

→ CF south east. + compact.

→ Sloping FF west completed.

QA:

OWNER:

Report By:

**DAILY CONSTRUCTION MEETING**

**SADDLE DAMS 345** MC int. struc.



**AGNICO EAGLE**  
MEADOWBANK

Date: 2018-07-04

Time: 8h00

**Presents:**

AEM: AL-SL

SANA: LB

QA: SB

QC: DR

**Health & Safety:**

→ Loss time accident AEM.

**Daily Advance:**

SANA: FF (152) 1+320 → 1+300 2 loads  
FF compact. 2+810 → 2+095  
CF placem. 2+815 → 2+980 46 loads  
Ø RF

QA:

OWNER:

**General Planning/Comments:**

SANA: → Ø RF planned  
→ Continue CF 2+815 → 3+160  
→ RF Sloping 1+300

QA: → Pipe from NP2 need a crossing.

OWNER:

Report By: \_\_\_\_\_

**DAILY CONSTRUCTION MEETING**

**SADDLE DAMS 345**

LC m/s Sh



**AGNICO EAGLE**  
MEADOWBANK

Date: 2017-07-05

Time: 8h00

**Presents:**

AEM: AL, SL

SANA: LB, PO

QA: SB

QC: DR

**Health & Safety:**

→ Overt.

**Daily Advance:**

SANA: FF 2+810 → 2+800      placem.  
CF 2+980 → 3+160      ~

2+15 → 2+925      compact.  
RF Slope 1+300 → 1+175      3+070 → 3+160  
QA: 35 CF ladders  
1 FF ~

**OWNER:**

**General Planning/Comments:**

SANA: complete FF zone 1

compact. CF

continue FF

**QA:**

OWNER: → Fred coming on site today. Alex leaving.  
→

Report By: 

**DAILY CONSTRUCTION MEETING**

**SADDLE DAMS 3-4-5 + NC**



**AGNICO EAGLE**  
MEADOWBANK

Date: 2018-07-06

Time: 8 h00

**Presents:**

AEM: FLB, JL

SANA: PO

QA: SB

QC: DR

**Health & Safety:**

NA

**Daily Advance:** Cont 24

SANA: R/F slope 1+175 to 1+200 El. 152

CF 1+300 to 1+200 Load 20

FF 2+900 to 2+940 Load 23

Compaction CF: 2+925 to 3+160 and 1+300 to 1+200

FF: 2+095 to 2+000

QA:

NA

OWNER:

NA

**General Planning/Comments:** Next 24

SANA: Complete FF 2+940 to 3+160 and 1+300 to 1+200

QA:

OWNER:

Report By: Frédéric C. Bolduc

**DAILY CONSTRUCTION MEETING**

**SADDLE DAMS 3-4-5**



**AGNICO EAGLE**  
MEADOWBANK

Date: 7/7/2018

Time: 8:00 - 8:20

**Presents:**

AEM: Frederick Bolduc, Nicholas Blackburn, Jason Laforce, Alain Minie

SANA: Patrice Ouellette, Luc Blanchette

QA: Samuel Barbeau

QC: Daniel Roy

**Health & Safety:**

- A worker from Sana dropped a tool on ~~it~~ his foot. Broken bones. change of duty
- Sana's worker burned his hand with mechanical equipment. He was brought to the medical clinic.

**Daily Advance:**

SANA: 0-3/4" from 1-300 to 1+210 and 2+940 to 3-120

QA: —

OWNER: —

**General Planning/Comments:**

- SANA:
- Complete 3/4" before Lunch
  - SD access to SD3
  - No rock fill material for now. Maybe tomorrow

QA: —

OWNER: —

Report By: Nicholas Blackburn

**DAILY CONSTRUCTION MEETING**

**SADDLE DAMS 3-4-5**



**AGNICO EAGLE**  
MEADOWBANK

Date: 2018/07/08

Time: 8:00 - 8:15

**Presents:**

AEM: Nicholas Blackburn, Jason Laforce, Alain Hincé, Frederick Bolduc

SANA: Patrice Ouellette, Luc Blanchette

QA: Samuel Barbeau

QC: Daniel Roy

**Health & Safety:**

- No event for last 24 hours
- Wolverine spotted at the burning pad.

**Daily Advance:**

SANA: • 3/4" at North cell: 3+120 at 3-160

• rock fill at SD3: 20+730 - 20+785 (for access)

• rock fill (NC) at 1+170

QA: -

OWNER: -

**General Planning/Comments:**

SANA: • Complete rock fill extension + geotextile (2 layers) for next 24 hours (at SD3).

owner

• Discuss and plan downstream ditches at North Cell with designer and contractor.

QA

OWNER: -

Report By: Nicholas Blackburn

DAILY CONSTRUCTION MEETING

SADDLE DAMS 3-4-5

Date: 2018-07-08  
Time: 8:00 09



Presents:

AEM: Nicholas Blackburn, Jason Laforce, Frederick Bolduc  
SANA: Patrice Ouellette  
QA: Samuel Barbeau  
QC: Daniel Roy

Health & Safety:

- Pick up passed beside a 6x6 without calling on the radio on the West Road.

Daily Advance:

- SANA:
- Complete access road 20+730 - 20+610 (SD3)
  - put the muck protection 20+630 - 20+610 (SD3)
  - Rock fill at NorthCell 1+140

QA:

OWNER:

General Planning/Comments:

- SANA:
- start the till protection after completing the geotextile.
  - Geotextile to start this morning.

QA:

- OWNER:
- AEM to meet with ditches designer today.

Report By: Nicholas Blackburn



**DAILY CONSTRUCTION MEETING**

**SADDLE DAMS 3-4-5**



**AGNICO EAGLE**  
MEADOWBANK

Date: 2018/07/10

Time: 8:00

**Presents:**

AEM: Nicholas Blackburn, Frederic Bolduc, Jason Laforce, Alain Hino

SANA: Sabin Lanouche, Pierre Gauthier

QA: Samuel Barbeau

QC: Daniel Roy

**Health & Safety:**

• Nothing to report

**Daily Advance:**

SANA: ☐ Started the geotextile installation

- ☐ Fill at 20 + 610 → 20 - 715
- ☐ 24 load of fill
- ☐ 15th lift completed and

QA:

OWNER:

**General Planning/Comments:**

- SANA:
- ☐ Complete placement of fill at SD3
  - ☐ Put the second layer of geotextile at SD3
  - ☐ Finish first lift of fill

QA:

OWNER:

Report By: Nicholas Blackburn

**DAILY CONSTRUCTION MEETING**

**SADDLE DAMS 3-4-5**



**AGNICO EAGLE**  
MEADOWBANK

Date: 11/07/2018

Time: 8h00

**Presents:**

AEM: Justine Petrucci, Frederick Bolduc, Denis Gosselin

SANA: Sabin Larouche, François Gravel - Grenier

QA: Samuel Barbeau

QC: Daniel Roy

**Health & Safety:**

- Stay hydrated
- Dust control

**Daily Advance:**

SANA: • till : +20 + 715 @ 20 + 760  
• 4 roads  
• 80 m<sup>3</sup>.

• 2 load class 1 abutment (40 m<sup>3</sup>)

- No Paving protection : → 20 + 616 @ 20 + 760
- Pumped water hole at SD3

QA:

OWNER:

**General Planning/Comments:**

SANA: • Compactor down at SD3

• Slope + 6" placement at North cell

• Muck stock pile

QA:

OWNER:

Report By:

*Justine Petrucci*

DAILY CONSTRUCTION MEETING

SADDLE DAMS 3-4-5

Date: 12/07/2018

Time: 8h00

**AGNICO EAGLE**  
MEADOWBANK

Presents:

AEM: Justine Petrucci, Frederick Bolduc, Denis Gosselin  
SANA: Sabin Larouche, François Gravel, Glenier, Pierre Gautier  
QA: Samuel Barbeau  
OC: Daniel Roy

Health & Safety:

Plane landing on dike operation  
Dust control  
Weather (hot)

Daily Advance:

SANA: abutment muck compaction + till compaction  
3 loads of NP → 60 m<sup>3</sup>  
1 loads 6" → 20 m<sup>3</sup>  
20 + 775 @ 20 + 800  
finish second lift + till 20 + 610 @ 20 + 760 23 loads  
460 m<sup>3</sup>  
QA: compaction north cell (≈ 20 m)  
till

OWNER:

General Planning/Comments:

SANA:	• Muck Protection	• fill hole SD3 (Tailing side)
	• Compaction north cell	• { 2200 m <sup>3</sup> 143.5
	• lift compaction	{ 2900 m <sup>3</sup> 144
	• South abutment	needed volume
	• change of alignment	• Make sure pipe at 154
QA:		is not covered

OWNER: Ditch meeting

Report By:

Justine Petrucci

**DAILY CONSTRUCTION MEETING**

**SADDLE DAMS 3-4-5**



**AGNICO EAGLE**  
MEADOWBANK

Date: 13/07/2018

Time: 8h00

**Presents:**

AEM: Justine Petrucci, Denis Gosselin, Frederick Bolduc

SANA: Sabin Larouche, François Gravel Grenier

QA: Samuel Barbeau

QC: Daniel Roy

**Health & Safety:**

Airport controller call the plane arrival

**Daily Advance:**

SANA: • compaction north cell (fine filter) 1+650 @ 2+028

• Lift 143 No Pag 20+610 @ 20+760  
→ 35 loads

+ compaction (till @ muck)

South abutment → 4 loads class 1 till (SD3)

QA: → 2 loads 3/4

→ 1 load 6"

→ 20+775 @ 20+800

OWNER: Follow-up landmark (Picket) North cell

**General Planning/Comments:**

SANA: • South abutment

• next lift 143.5 (class 2 Till)

QA: Remove boulders before sloping

**OWNER:**

Report By:

Justine Petrucci

**DAILY CONSTRUCTION MEETING**

**SADDLE DAMS 3-4-5**



**AGNICO EAGLE**  
MEADOWBANK

Date: 14/07/2018

Time: 8h00

**Presents:**

AEM: Justine Petrucci, Frédéric Balduc, Denis Gosselin

SANA: Sabin Larouche, François Gravel Grenier

QA: Samuel Barbeau

QC: Daniel Roy

**Health & Safety:**

Dust control → water

**Daily Advance:**

SANA: South abutment 20+770 @ 20+800      • 2+455 @ 2+870  
6 loads on NP → 120 cum      • Rock Fill to  
5 loads 6" → 100 cum      high  
2 loads 0 → 3/4 → 80 cu.m  
14 loads till → 180 cu.m

• Compaction is complete

**OWNER:**

**General Planning/Comments:**

SANA: finish south abutment  
start north abutment + compaction  
last lift → 143.5



**QA:**

OWNER: check up to respect the volume (limited quantity)  
of rock fill

Report By:

Justine Petrucci

**DAILY CONSTRUCTION MEETING**

**SADDLE DAMS 3-4-5**



**AGNICO EAGLE**  
MEADOWBANK

Date: 15/07/2018

Time: 8h00

**Presents:**

AEM: Justine Petrucci, Frederick Bolduc, Denis Gosselin

SANA: Sabin Larouche, François Gravel Grenier

QA: Samuel Barbeau

QC: Daniel Roy

**Health & Safety:**

N/A

**Daily Advance:**

SANA: Dozer: North cell 2+289 @ 2+370

• Lift  $\Rightarrow$  OK (154)

• Finish South abutment 20+770 @ 20+800

• North abutment 1 lift till + compaction

• 11 loads till class 1 220 cum

QA:

• 5 loads 6" 100 cum

• Start Geotextile

• 5 loads 3/4 100 cum

• Slope North cell 1+134 @  
1+183

OWNER: QA: Big rocks upstream.

**General Planning/Comments:**

SANA: • Complete North abutment

• lift 143  $\rightarrow$  143.5

• Slope North cell

QA:

OWNER: Control lift elevation

Report By:

Justine Petrucci

**DAILY CONSTRUCTION MEETING**

**SADDLE DAMS 3-4-5**

Date: 16/07/2018

Time: 8h00

**AGNICO EAGLE**  
MEADOWBANK

**Presents:**

AEM: Fr  d  rick Bolduc, Justine Petrucci, ~~Denis Gosselin~~

SANA: S  bn Larouche, Fran  ois Gravel Grenier, Pierre Gauthier

QA: Samuel Barbeau

QC: Daniel Roy

**Health & Safety:**

Nothing to report

**Daily Advance:**

SANA: Bull north cell 2+278 @ 2+289

Slope north cell 2+547 @ 2+720

Finish 152 part (slope muck) 1+115 @ 1+134

SP3 north abutment

4 load class 1 till 80 cum

of 9 load class 2 till 180 cum

4 load b" 80 cum

4 load 0-3/4 80 cum

OWNER: 7 loads muck 140 cum

**General Planning/Comments:**

SANA: finish fill hole SP3

• lift 143.5 (1 1/2 to 2 DAYS)

• Slope north cell

• Pipe SP3 to move?

QA:

OWNER:

Report By:

Justine Petrucci

**DAILY CONSTRUCTION MEETING**

**SADDLE DAMS 3-4-5**



**AGNICO EAGLE**  
MEADOWBANK

Date: 17/07/2018

Time: 8:00

**Presents:**

AEM: Fr  d  rick Balauc, Justine Petrucci

SANA: Sabin Larouche, Fran  ois Gravel Grenier,

QA: Marion H

QC: Mathieu

**Health & Safety:**

The airport controller to call the plane

**Daily Advance:**

SANA: North abutment 20+528 @ 20+599 Muck backfill  
Hole north 20+569 @ 20+591 29 loads class 2 till  
Sloping NC 2+409 @ 2+547  
600 m to go for 154

QA:

OWNER:

**General Planning/Comments:**

SANA: Finish protection layer class 2 till  
Compactor still down  
Ditch + capping + follow the plan

QA:

OWNER: 8000 T of muck  
The pipe needs to be moved

Report By: \_\_\_\_\_



**DAILY CONSTRUCTION MEETING**

**SADDLE DAMS 3-4-5 NORTH CELL AND CENTRAL DIKE**



**AGNICO EAGLE**  
MEADOWBANK

Date: 18/07/2018

Time: 8h00

**Presents:**

AEM: Frédéric Bolduc, Justine Petrucci, Denis Gosselin

SANA: Sabin Lanouche, François Gravel Grenier

QA: Marion Habersetzer

QC: Mathieu Côté

**Health & Safety:**

Blast Vault 12:45

Surveyor twist ankle on north cell, went at the clinic  
=> OK!

Airport controller need to call on dike channel

**Daily Advance:**

SANA: NC: 2+190 @ 2+278 (night shift)

SD3: Rock filled protection layer 13 bds 260 cum 20+668 @ 20+777

NPog 20+668 @ 20+777

Till 20+619 @ 20+777

QC: Compaction north abutment 20+569 @ 20+599

QA: Re do the compaction on the same chainage

**OWNER:**

**General Planning/Comments:**

SANA: Finish NPog protection

Finish SD3

Switch to North cell (152 for august 1st)

**QA:**

**OWNER:**

Report By:

Justine Petrucci

**DAILY CONSTRUCTION MEETING**

**SADDLE DAMS 3 - CENTRAL DIKE 2018**



**AGNICO EAGLE**  
MEADOWBANK

Date: 19/07/2018

Time: 8:00

**Presents:**

AEM: Fr            , Justine Petrucci, Denis Gosselin

SANA: Sabin Larouche

QA: Marion Habersetzer

QC: Mathieu C    

**Health & Safety:**

Nothing to report

**Daily Advance:**

SANA: NC: 2+103

443 m to go

SD3: protection backfill 20+708 @ 20+777

finish backfill south abutment 20+777 @ 20+807 + 2 loads class 1 till

8 loads 0-3/4 (160 cu.m)

of 8 loads 6" (160 cu.m)

2 Non Pay loads (40 cu.m)

North abutment 20+599 @ 20+613

OWNER: 2 loads 0-3/4 (40 cu.m)

**General Planning/Comments:**

SANA: finish north and south abutment  
move to North cell (August 1st)

QA:

OWNER:

Report By:

Justine Petrucci

**DAILY CONSTRUCTION MEETING**

**SADDLE DAMS 3 - CENTRAL DIKE 2018**



**AGNICO EAGLE**  
MEADOWBANK

Date: 2018/07/20

Time: 0900

**Presents:**

AEM: DG, AL

SANA: MG, SL, LB, FGG

QA: MH

QC: MC

**Health & Safety:**

- > Near miss 2 haul truck AEM waiting - SANA truck passing
- > Specific Risk: communicate before passing

**Daily Advance:** NC

- SANA: -> 1+984 rock fill 154 (324m left)
- > Coarse F 1+113 -> 1+200 26 loads 650m<sup>3</sup>
  - > Compae 1+200 -> 1+170
  - > FF 1+205 -> 1+215 4 loads 100 m<sup>3</sup>

QA: SD3 20+594 -> 20+613 plug

CF 20m<sup>3</sup>

AF 60m<sup>3</sup>

OWNER: completion

**General Planning/Comments:**

SANA: -> complete FF 152

QA:

OWNER:

Report By: 

**DAILY CONSTRUCTION MEETING**

**SADDLE DAMS 3 - CENTRAL DIKE 2018**



**AGNICO EAGLE**  
MEADOWBANK

Date: 2018/07/21

Time: 8h00

**Presents:**

AEM: AL,

SANA: SL, MG, FOS

QA: MH

QC: MC

**Health & Safety:**

→ Near miss AMW with backhoe

→ Beth

→ Blast Vault

**Daily Advance:**

SANA: FF	1+113 → 1+205	(152)	29 loads	725 m <sup>3</sup>
CF	2+575 → 2+710	(154)	28 loads	700 m <sup>3</sup>
	2+411 → 2+460			

compact

CF 1+513 → 1+143

QA: RF → 1+947

**OWNER:**

**General Planning/Comments:**

SANA: CF placement 154  
compact EF  
Placement FF

**QA:**

**OWNER:**

Report By: 

**DAILY CONSTRUCTION MEETING**

**SADDLE DAMS 3 - CENTRAL DIKE 2018**, NORTH CELL



**AGNICO EAGLE**  
MEADOWBANK

Date: 22/07/2018

Time: 8h00

**Presents:**

AEM: Justine Petrucci

SANA: Sabin Larouche, François Gravel Grenier, Luc Blanchette

QA: Marion Haber setzer

Mickael Gagnon

QC: Mathieu Côté

**Health & Safety:**

SLOW DOWN WHEN PASSING CLOSE TO THE PERSON THAT ARE  
WALKING, LOT OF DUST

**Daily Advance:**

SANA: ROCKFILL NC 1+863

FINE FILTER 2+770 @ 2+445 39 loads 975 cu.m

CF 0-6" 2+575 @ 2+460 6 loads 150 cu.m

COMPACTION 6" 2+770 @ 2+445

COMPACTION 0-3/4 1+251 @ 1+660

QA:

**OWNER:**

**General Planning/Comments:**

SANA: CD: TILL, 3/4, 6", MUCK COMPACTION NORTH CELL

1 SLOPE NC

FINISH CENTRAL DIKE

QA:

**OWNER:** ROCKFILL volume needed NC:  $\approx 15000$  cu.m

Report By:

*Justine Petrucci*

**DAILY CONSTRUCTION MEETING**

**SADDLE DAMS 3 - CENTRAL DIKE 2018**, North Cell



**AGNICO EAGLE**  
MEADOWBANK

Date: 23/07/2018

Time: 8h00

**Presents:**

AEM: Justine Petrucci, Alex Lavalée, Denis Gosselin

SANA: Sabin Larouche, François Gravel Grenier, Mickael Gagnon

QA: Manion Habersetzer

QC: Mathieu Côté

**Health & Safety:**

wildlife

Airport controller do not call on dike channel since the work at SD3 are complete.

**Daily Advance:**

SANA: complete CD 0+147 @ 0+177 Slope 2+454 @ 2+409  
till, 0-3/4, 0-6  
Slopes till 100 cu.m  
4 loads 6" 80  
3 loads 0-3/4 60 cu.m  
QA: 9 loads muck  
North cell:  
Coarse filter  
Rockfill (no advance)

**OWNER:**

**General Planning/Comments:**

SANA: NC: • rock fill • crew change  
• coarse filter  
• compaction

QA: INKCS: 0,5 for the ditch

OWNER: Priority for muck is for the dike (NC)  
QA need to define deposition point with AEM

Report By:

Justine Petrucci

**DAILY CONSTRUCTION MEETING**

**SADDLE DAMS 3 - CENTRAL DIKE 2018** NORTH CELL



**AGNICO EAGLE**  
MEADOWBANK

Date: 24/07/2018

Time: 8h00

**Presents:**

AEM: Justine Petrucci, Alex Lavallée,

SANA: ~~Patricia~~ Ouelletto, Luc Blanchette

QA: Marion Habersetzer

QC: Mathieu Côté

**Health & Safety:**

Nothing to report

**Daily Advance:**

SANA: Slope rockfill 2+159 + 2+600

0-6" 27 loads

CF 2+293 @ 2+080

0-3/4 22 loads

FF 2+460 @ 2+300

CD - complete

Compaction CF 2+093 @ 2+080

Compaction FF 2+700 @ 2+650

QA:

**OWNER:**

**General Planning/Comments:**

SANA: Rockfill slope

Ditch: 

Sump NC QA on the field

QA: Sump localisation

OWNER: Ditch & Sump need to be complete on 08/01

& Deposition point

Report By:



**DAILY CONSTRUCTION MEETING**

**SADDLE DAMS 3 - CENTRAL DIKE 2018**

**NORTH CELL**



**AGNICO EAGLE**  
MEADOWBANK

Date: July 25<sup>th</sup>, 2018

Time: 8h00

**Presents:**

AEM: Nicholas Blackburn, Alexandre Lavallois

SANA: Luc Blanchette, Patrice Ouellette

QA: Naïven Habusset

QC: Nathaniel O'Brien

**Health & Safety:**

- Dust Control. Keep a proper distance between vehicles when driving on the North Cell.
- DS slope for sump. Loose material

**Daily Advance:** (July 24<sup>th</sup>)

- SANA:
- Slope rockfill 2+159 @ 1+185
  - CF 2+080 @ 1+910
  - FF 2+300 @ 2+090
  - Compaction CF 2+080 @ 2+000
  - Compaction FF 2+650 @ 2+520
  - Ditch: 1+700 @ 1+650
  - Sump: 0+010 @ 0+030

**OWNER:**

**General Planning/Comments:**

- SANA:
- Complete 0-6" compaction (rockfill completion)
  - Continue work @ ditch on East side
  - Fingers for deposition points

**QA:**

**OWNER:**

- Coordinates for deposition points required.

Report By: Nicholas Blackburn



**DAILY CONSTRUCTION MEETING**

**SADDLE DAMS 3 - CENTRAL DIKE 2018**



**AGNICO EAGLE**  
MEADOWBANK

Date: 2018-07-26

Time: 8h00

**Presents:**

AEM: AL

SANA: LB, PO

QA: MH

QC: MC

**Health & Safety:**

Φ

**Daily Advance:**

SANA: RF @ 1+830 ~~1+840~~ (1+947)

CF 1+910 → 1+850 (3 locs) 2+000 1+890 comp 3 loc

PF 2+090 → 1+850 (24 locs)

Depos. 1+455 } 23 from NPAS 135

QA: 1+985

Trench 1+455 → 1+985

**OWNER:**

**General Planning/Comments:**

SANA: → Finger  
→ Trench (culvert)  
→ Pipe  
→ CF, PF, RF

**QA:**

**OWNER:**

Report By: 

**DAILY CONSTRUCTION MEETING**

**SADDLE DAMS 3 - CENTRAL DIKE 2018**



**AGNICO EAGLE**  
MEADOWBANK

Date: July 27<sup>th</sup>, 2018

Time: 8:00

**Presents:**

AEM: NIB, AL, AH,

SANA: LB, MG

QA: MH

QC: MC

**Health & Safety:**

- Focus on dust control

**Daily Advance:** (July 26<sup>th</sup>)

SANA: Slope rockfill: 1+930

0-6"

CF: -

0-3 1/4"

FF: -

Compaction CF: -

Compaction FF: 1+251 1+240

Ditch: 1+470 @ 1+4100 → excavation ~ 8m deep

Sump: Excavation ~ 0.5m @ sump @ 3+010 to 3+030

Deposition point at: st 2+220, 2+440, 2+610,

OWNER 2+790 and 1+725

**General Planning/Comments:**

- SANA:
- Other sump excavation
  - Continue ditch excavation if sump work is completed

QA: Sump need reject material at bottom and slope

**OWNER:**

Report By: Nicholas Blackburn

**DAILY CONSTRUCTION MEETING**

**SADDLE DAMS 3 - CENTRAL DIKE 2018**



**AGNICO EAGLE**  
MEADOWBANK

Date: July 28<sup>th</sup>, 2018  
Time: 8:00 am

**Presents:**

AEM: NB, JC, AH  
SANA: MG  
QA: PH  
QC: MC

**Health & Safety:**

The heavy rain from yesterday reduced the dust @ NC.

**Daily Advance:** (July 27<sup>th</sup>)

SANA: . Rock fill (154 m) Sta. 1+830 to 1+860 + Remove excess RF  
• CF compaction @ 1+240 to 1+100 and +5 3+141 to 2+220  
• EF Excavation of ditch from 1+400 to 1+380  
+ culvert installed @ 1+460  
• North sump correction (erosion protection)  
QA: . Excavation of the other sump (south) + reject no.

**OWNER:**

**General Planning/Comments:**

SANA: . Rock fill slope progress  
• Fine filter progress  
• Turn nap on disposition point  
• Coarse filter  
QA: .

**OWNER:**

Lenore Colaneri to go with MG for instrument at SD3

Report By:

N Blackburn

**DAILY CONSTRUCTION MEETING**

**SADDLE DAMS 3 - CENTRAL DIKE 2018**



**AGNICO EAGLE**  
MEADOWBANK

Date: July 29<sup>th</sup> 2018  
Time: 8:00 am

**Presents:**

AEM:

SANA:

QA:

QC:

**Health & Safety:**

**Daily Advance:**

SANA: No meeting occurred on July 29<sup>th</sup>. No SANA Foreman could attend the meeting

QA:

OWNER:

**General Planning/Comments:**

SANA:

QA:

OWNER:

Report By: \_\_\_\_\_

**DAILY CONSTRUCTION MEETING**

**SADDLE DAMS 3 - CENTRAL DIKE 2018**



**AGNICO EAGLE**  
MEADOWBANK

Date: July 30<sup>th</sup>

Time: 8:00 am

**Presents:**

AEM: NB, AL

SANA: MB, LB

QA: MH

QC: MC

**Health & Safety:**

- Horse truck and pick up incident will be investigated  
The event occurred on July 28<sup>th</sup> ~ 11:40 am

**Daily Advance:**

- SANA:
- CF placement and compaction 1+940 - 1+926 (12 loads)
  - Rock fill slope 1+780 - 1+700
  - FF placement + compaction 1+920 - 1+830 (11 loads)
  - Built access to work on trench

QA:

OWNER:

**General Planning/Comments:**

- SANA:
- ~~Built an access to work on the trench~~
  - Coarse filter
  - Tuna nap
  - Excavation of the trench to be done this afternoon.

QA:

OWNER:

Report By:

Nicholas Blockburn

**DAILY CONSTRUCTION MEETING**

**SADDLE DAMS 3 - CENTRAL DIKE 2018**



**AGNICO EAGLE**  
MEADOWBANK

Date: 2018/07/31

Time: 8:00

**Presents:**

AEM: AL, NB

SANA: MG

QA: MH

QC:

**Health & Safety:**

• Nothing to be reported

**Daily Advance:**

SANA: • Finger done with teranap  
• 21 loads of 6" (625m<sup>2</sup>) → 1+826 1+660  
• 13 loads of 8 1/4" (325m<sup>2</sup>) → 1+800 1+700  
• Stopping → 1+740 1+640  
• No work done on the trench

QA:

OWNER:

**General Planning/Comments:**

SANA: • Reject material to be placed in the trench  
• Continue excavation of the trench

QA:

OWNER:

Report By: Nicholas Blackburn

**DAILY CONSTRUCTION MEETING**

**SADDLE DAMS 3 - CENTRAL DIKE 2018**



**AGNICO EAGLE**  
MEADOWBANK

Date: 2018/08/01

Time: 8:00

**Presents:**

AEM: AL, NB

SANA: MG, LB

QA: PH

QC: HP

**Health & Safety:**

Loader scrapped the road for better access

**Daily Advance:**

- SANA:
- Ditch excavation ~ 1+200
  - Till reject is placed in the ditch
  - Filter (Fine) 1+700 to 1+660
  - Trench installed on all deposition point

- QA:
- Compaction completed below last deposition point

**OWNER:**

**General Planning/Comments:**

- SANA:
- Ditch (excavation + till reject)

**QA:**

**OWNER:**

Report By: Nicholas Blackburn

**DAILY CONSTRUCTION MEETING**  
**SADDLE DAMS 3 - CENTRAL DIKE 2018**



Date: 8/03/2018

Time: 8:00

**Presents:**

AEM: FLB .AP  
 SANA: René Colled

QA: -

QC:

**Health & Safety:**

-NA

**Daily Advance:**

SANA: ditch NC. some corrective work to be done to ensure granite drainage

QA:

OWNER:

**General Planning/Comments:**

SANA: Ditch and run

QA:

OWNER:

Report By: Frédéric L. Bolduc





**APPENDIX E**

# QA Reporting

**APPENDIX E-1**

## QA Weekly Reports

## QA WEEKLY REPORT

**DATE** May 21st 2018

1897439-1577-TM-Rev0

**TO** Patrice Gagnon, Pier-Éric McDonald  
Agnico Eagle Mines Ltd, Meadowbank Division

**CC** Frédéric Bolduc, Alexandre Lavallée

**FROM** Marion Habersetzer

**EMAIL** mhabersetzer@golder.com

### QA WEEKLY REPORT FROM MAY 19<sup>TH</sup> TO MAY 20<sup>TH</sup> – TSF NORTH CELL CONSTRUCTION MEADOWBANK (1897439)

This document summarizes QA activities performed by Golder from May 19<sup>th</sup> to 20<sup>th</sup>, 2018 inclusively, related to the construction activities of the North Cell Internal Structure at the Meadowbank mine site.

Unless otherwise specified, the construction activities use the centreline of the structures for a dike crest elevation of 152 m for reference (refer to the Drawings). The description of activities refers to the stations and offsets from the centreline (e.g., Sta. 0+500/-50 m). The “+” and “-” symbols indicate the location of the work downstream and upstream of the centreline, respectively.

## 1.0 GOLDER PERSONNEL ON SITE

Golder personnel on site during this reporting period is summarized in Table 1.

**Table 1: Golder Personnel on Site**

Name	Comments
Marion Habersetzer	QA Manager (on site since May 14 <sup>th</sup> )

## 2.0 HEALTH AND SAFETY

H&S meetings were held with AEM and FGL/SANA during the daily construction meetings. Minutes from these meetings are recorded and stored in Golder's on-site office. The key H&S elements for the reporting period were as follows:

- Cold weather and ice: apply caution when driving or walking on icy surfaces, wear appropriate clothing.

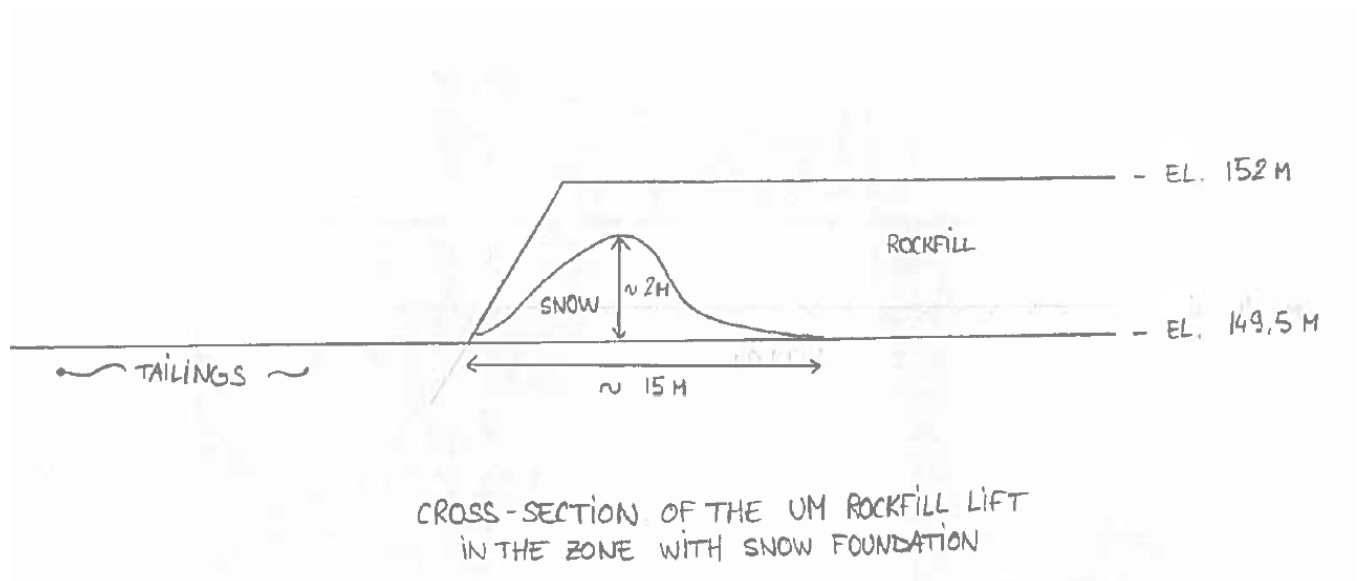
- Dust is still an issue on the construction field; be vigilant by staying out of the dust cloud near construction activities and road circulation. The personnel working on foot has to wear a mask due to the toxicity of the dust (fine tailings dust).
- Coactivity on the dike: be aware of blind spots and safe spots, keep good communication and visual contact with the operators.
- The test pits excavated in the UM rockfill have steep slopes and some rockfill is falling as the walls dry. Do not enter an unsupported excavation that is more than 1.2 m deep.

### 3.0 SUMMARY OF MAIN DISCUSSIONS IN CONSTRUCTION MEETINGS

Construction meetings were held daily during the reporting period and were attended by the QA Manager. The following items were discussed:

#### General

- Works of the North Cell Internal Structure have begun on May 19<sup>th</sup>.
- The rockfill used for the North Cell Internal Structure is well-graded non-AG material. AEM indicated that both intermediate volcanic (IV) and ultramafic volcanic (UM) rockfill have been used, although the majority of the material is UM rockfill.
- The upstream toe of the rockfill capping has been mapped to perform a field fitting of the design, as the Internal Structure will be offset towards the center of the North Cell compared to the initial plans. This has been agreed with the Designer. A new centerline will be provided by SANA's surveyor. In the meantime, the locations of works and photographs in this report are indicated on the enclosed plans.
- It was pointed out that an elevation guide was required for the dozer operator for rockfill placement, as the D9 dozer is not equipped with a GPS to control the elevation of the rockfill lift. The current elevation of the lift is variable (approx. 152 m) and will be surveyed by SANA.
- It was noticed that the 2-m thick UM rockfill at El. 152 m (approx.) was placed on an important layer of hard snow (up to 2 m thick) without QA/QC supervision earlier in the season (see photographs and sketch below), over a distance of approx. 100 m along the dike. It is required to remove this rockfill and clear the snow before placing rockfill again, as the presence of an underlying snow layer will cause excessive settlement in the structure. It was reiterated that per the design, the foundation of the structure must be snow-free, compacted rockfill material constituting the capping of the North Cell.



- Test pits were excavated to identify the extent of the snow layer. Since snow was not observed in the northern part of the UM rockfill lift, which appears to be built directly on the North Cell capping, it was decided to move the operations there and progress towards the north. The excavator removes the snow-rich toe of the UM rockfill lift until snow is no longer observed (a 2-3 m wide zone in average), and a dozer pushes the excavated material (UM rockfill mixed with snow) toward the center of the North Cell to clear the upstream toe.
- The QA Manager noticed several oversize boulders on the UM rockfill lift at El. 152 m and reiterated that the maximum allowable size on the dikes is 1.3 m. AEM forwarded the information to the operators in the pit and on the dikes. If an oversize boulder is delivered on the dikes, it will be pushed aside in the downstream slope by the dozer during placement. The QA Manager reiterated that oversize boulders already in place in the upstream slope of the structure must be removed during sloping operations. The boulders will be moved into the tailings of the North Cell.
- In order to guide the dozer operator during UM rockfill placement, a surveyor checks the elevation of the lift throughout the day. The surveyor also provides guidance to the excavators profiling the upstream slope of the UM rockfill lift from El. 150 m to 152 m.

## Follow up

- Oversize boulders removal and quality of the UM rockfill.
- Review the new alignment of the Internal Structure.

## 4.0 SUMMARY OF CONSTRUCTION ACTIVITIES AND TEST RESULTS

Periodic QA inspections to monitor the construction activities and progress were performed by the QA Manager; these are summarized in the tables below. For the location and extent of the construction works, refer to the enclosed plans.

**Table 2: QA Observations for the North Cell Internal Structure**

Activity or Area	Comments
Upstream	<ul style="list-style-type: none"> <li>■ Excavation of 2 test pits in the UM rockfill lift placed at El. 152 m to estimate the extent and thickness of the underlying snow layer.</li> <li>■ Excavation of the snow-rich upstream toe material on an average width of 2 to 3 m with an excavator.</li> <li>■ Removal of the excavated material, pushed with a dozer toward the center of the North Cell to clear the upstream toe.</li> <li>■ Placement of UM rockfill material from safety berms on the crest in the upstream slope with a dozer.</li> <li>■ Profiling of the upstream slope (3H:1V) from El. 150 to 152 m with an excavator.</li> <li>■ Placement a 2 m thick (approx.) lift of UM rockfill from El. 150 m to El. 152 m (approx.) with a dozer. The material is of good quality and is well graded.</li> </ul>

## 5.0 SAMPLING, LABORATORY AND FIELD TESTING

**Table 3 and**

Table 4 present the samples collected or tested by the QA and QC as well as PNG field results.

**Table 3: Samples Taken by the QC**

Sample ID	Date Sampled	Date Tested	Fill Material Type	Location (Station/Offset Elevation)	Test	Testing Result

**Table 4: Samples Taken by the QA**

Sample ID	Date Sampled	Date Tested	Fill Material Type	Location (Station/Offset Elevation)	Test	Testing Result

## 6.0 PHOTOGRAPHS



**Photograph NCIS-001: View of a test pit in the UM rockfill lift at El. 152 m: a thick layer (2 m) of snow underlies the rockfill.**





**Photograph NCIS-002: View of the scraped upstream side of the UM rockfill lift at El. 152 m: a thick layer of snow (1.5 m) underlies the rockfill.**



**Photograph NCIS-003: Excavation of the snow-rich upstream toe material on an average width of 2 to 3 m with an excavator.**



**Photograph NCIS-004: View of the scraped upstream side of the UM rockfill lift at El. 152 m further to the north: the snow layer is only observed at the toe and is approximately 0.5 m thick.**





**Photograph NCIS-005: Removal of the excavated material, pushed with a dozer towards the center of the North Cell to clear the upstream toe.**



**Photograph NCIS-006: View of oversize boulders on the UM rockfill lift at El. 152 m.**



**Photograph NCIS-007: Profiling of the upstream slope (3H:1V) from El. 150 to 152 m with an excavator.**