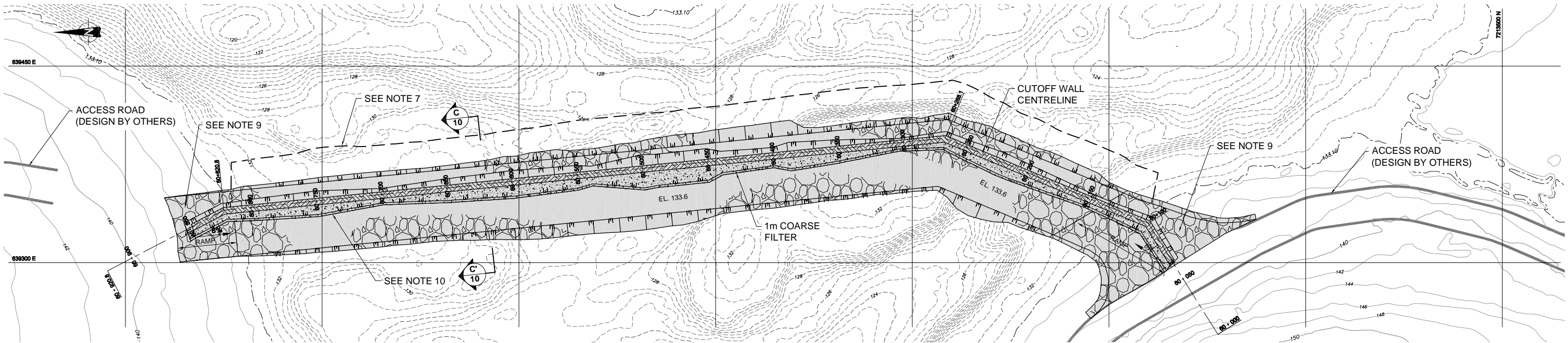
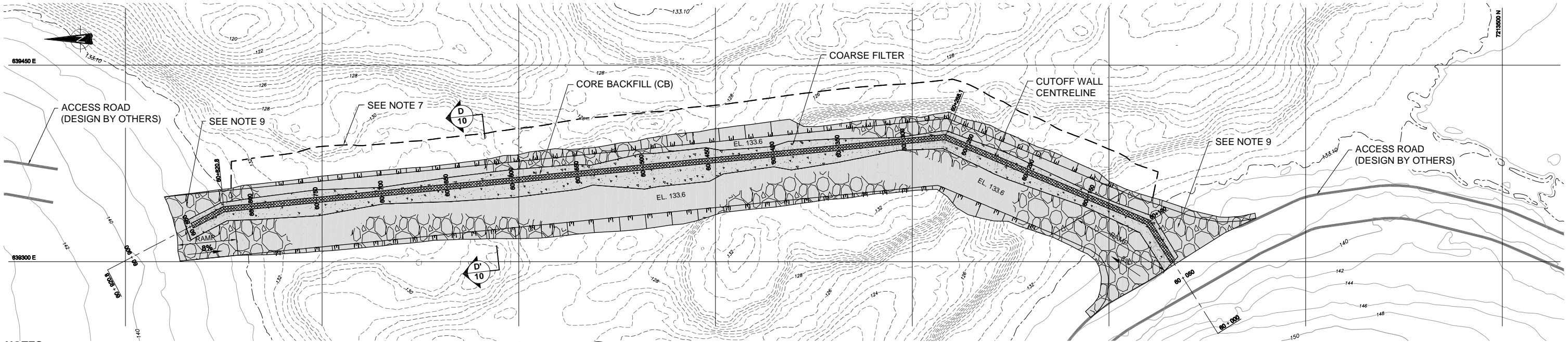


CADD FILE: N:\Bur-Graphics\Projects\2007\1413\07-1413-0074\Drafting\2500c\Task-1000\0714130074-2000.A.05.dwg  
REVISION DATE: 08/07/21 04:48PM By: ASalvador



**A COARSE FILTER PLACEMENT PLAN**



**B CORE BACKFILL PLACEMENT PLAN**

**NOTES:**

- 1) ALL DIMENSIONS ARE IN METRES UNLESS OTHERWISE NOTED.
- 2) ALL ELEVATIONS ARE IN METRES ABOVE SEA LEVEL (MASL), UNLESS OTHERWISE NOTED.
- 3) GRID REFERENCE: NAD 83, UTM ZONE 14.
- 4) CONTOUR INFORMATION ON LAND SUPPLIED BY AGNICO-EAGLE MINES LIMITED (AEM), MEADOWBANK DIVISION.
- 5) LAKEBED SURFACE BASED ON BATHYMETRIC AND SEISMIC SURVEYS BY GOLDER ASSOCIATES LTD., 2006. DETAILED BATHYMETRY (0.5m CONTOUR INTERVAL) BASED ON 2008 SURVEY.
- 6) LAKE CONTOURS ARE BASED ON SURVEYED LAKE SURFACE ELEVATIONS: SECOND PORTAGE LAKE = 133.1m
- 7) EXCAVATED ROCKFILL CAST UPSTREAM NOT SHOWN. MAXIMUM CREST ELEVATION OF EXCAVATED ROCKFILL CAST UPSTREAM IS 132.1. UPSTREAM TOE TO BE DETERMINED IN FIELD.
- 8) TRAFFIC BERMS NOT SHOWN FOR CLARITY - 1.9m HEIGHT REQUIRED FOR HAUL TRUCK TRAFFIC.
- 9) TIE-IN TO ACCESS ROAD TO BE FIELD FIT.
- 10) USE OF COARSE FILTER AGAINST WEST FACE OF EXCAVATION IS REQUIRED, UNLESS APPROVED IN WRITING BY THE ENGINEER.

**LEGEND:**

|  |  |
|--|--|
|  | LAND-BASED TOPOGRAPHIC MAJOR CONTOURS INTERVAL 10m |
|  | LAND-BASED TOPOGRAPHIC MINOR CONTOURS INTERVAL 2m  |
|  | BATHYMETRIC MAJOR CONTOURS INTERVAL 2m             |
|  | BATHYMETRIC MINOR CONTOURS INTERVAL 0.5m           |
|  | SHORE LINE   |
|  | CORE BACKFILL                                      |
|  | COARSE FILTER                                      |
|  | ROCKFILL   |
|  | BEDROCK  |

THIS DRAWING IS THE PROPERTY OF GOLDER ASSOCIATES LTD. AND IS NOT TO BE LOANED OR REPRODUCED IN ANY WAY WITHOUT THE PERMISSION OF GOLDER ASSOCIATES LTD.

|                   |     |  |                               |
|-------------------|-----|--|-------------------------------|
| PROJECT           |     | AGNICO-EAGLE MINES LIMITED<br>MEADOWBANK GOLD PROJECT<br>NUNAVUT |                               |
| TITLE             |     | EAST DIKE<br>ROCKFILL LAYOUT PLAN (2 OF 3)                       |                               |
| PROJECT No.       |     | 07-1413-0074/2500  | FILE No. 0714130074-2000.A.05 |
| DESIGN            | BW  | 04JUL08  | SCALE AS SHOWN                |
| CADD              | MJH | 04JUL08  | REV. 0                        |
| CHECK             | -   | -  |                               |
| REVIEW            | -   | -  |                               |
| Golder Associates |     | 2100-05  |                               |

|             |         |                              |                         |
|-------------|---------|------------------------------|-------------------------|
| 2100-10     |         | TYPICAL SECTIONS AND DETAILS |                         |
| DRAWING NO. |         | REFERENCES                   |                         |
| REV         | DATE    | DES                          | REVISION DESCRIPTION    |
| 1           | 01AUG08 | BW                           | ISSUED FOR CONSTRUCTION |
| 2           | 18JUL08 | BW                           | ISSUED FOR REVIEW       |
| 3           |         |                              |                         |
| 4           |         |                              |                         |
| 5           |         |                              |                         |
| 6           |         |                              |                         |
| 7           |         |                              |                         |
| 8           |         |                              |                         |
| 9           |         |                              |                         |
| 10          |         |                              |                         |