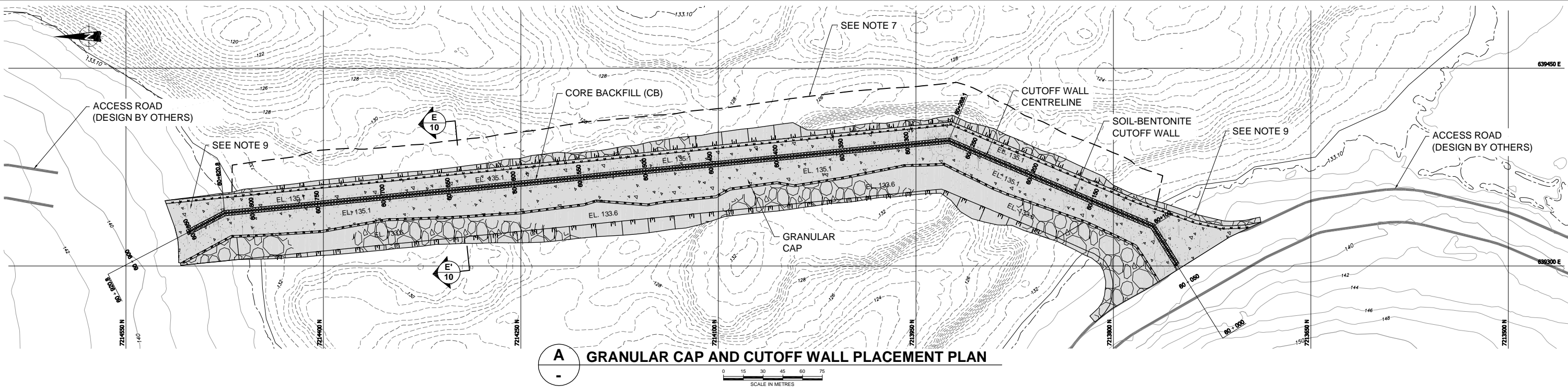
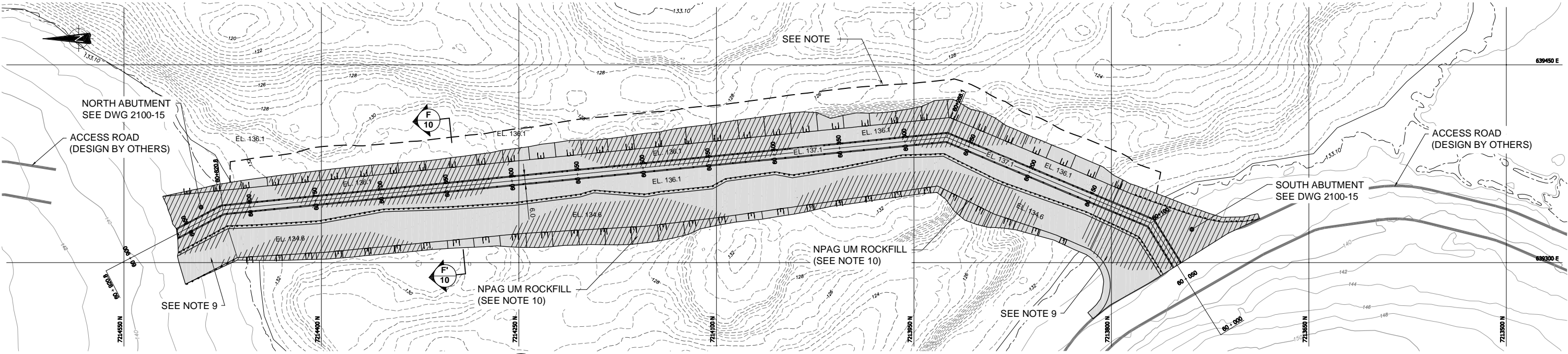


REVISION DATE: 08/07/21 04:30PM By: ASalvador CADD FILE: N:\Bur-Graphics\Projects\2007\1413\07-1413-007A\Drafting\2500c\Task-1000\0714130074-2000.A.06.dwg



A GRANULAR CAP AND CUTOFF WALL PLACEMENT PLAN



B ROCKFILL SURFACING AND THERMAL CAP PLACEMENT PLAN

NOTES:

- 1) ALL DIMENSIONS ARE IN METRES UNLESS OTHERWISE NOTED.
- 2) ALL ELEVATIONS ARE IN METRES ABOVE SEA LEVEL (MASL), UNLESS OTHERWISE NOTED.
- 3) GRID REFERENCE: NAD 83, UTM ZONE 14.
- 4) CONTOUR INFORMATION ON LAND SUPPLIED BY AGNICO-EAGLE MINES LIMITED (AEM), MEADOWBANK DIVISION.
- 5) LAKEBED SURFACE BASED ON BATHYMETRIC AND SEISMIC SURVEYS BY GOLDER ASSOCIATES LTD., 2006. DETAILED BATHYMETRY (0.5m CONTOUR INTERVAL) BASED ON 2008 SURVEY.
- 6) LAKE CONTOURS ARE BASED ON SURVEYED LAKE SURFACE ELEVATIONS: SECOND PORTAGE LAKE = 133.1m
- 7) EXCAVATED ROCKFILL CAST UPSTREAM NOT SHOWN. MAXIMUM CREST ELEVATION OF EXCAVATED ROCKFILL CAST UPSTREAM IS 132.1. UPSTREAM TOE TO BE DETERMINED IN FIELD.
- 8) TRAFFIC BERMS NOT SHOWN FOR CLARITY - 1.9m HEIGHT REQUIRED FOR HAUL TRUCK TRAFFIC.
- 9) TIE-IN TO ACCESS ROAD TO BE FIELD FIT.
- 10) NPAG ROCK PLACED AS 1m SURFACING TO BE UM ROCKFILL.

LEGEND:

- | | | | |
|--|--|--|-------------|
| | LAND-BASED TOPOGRAPHIC MAJOR CONTOURS INTERVAL 10m | | ROCKFILL |
| | LAND-BASED TOPOGRAPHIC MINOR CONTOURS INTERVAL 2m | | UM ROCKFILL |
| | BATHYMETRIC MAJOR CONTOURS INTERVAL 10m | | |
| | BATHYMETRIC MINOR CONTOURS INTERVAL 2m | | |
| | SHORE LINE | | |
| | CORE BACKFILL | | |
| | GRANULAR CAP | | |

THIS DRAWING IS THE PROPERTY OF GOLDER ASSOCIATES LTD. AND IS NOT TO BE LOANED OR REPRODUCED IN ANY WAY WITHOUT THE PERMISSION OF GOLDER ASSOCIATES LTD.

PROJECT	AGNICO-EAGLE MINES LIMITED MEADOWBANK GOLD PROJECT NUNAVUT					
TITLE	EAST DIKE ROCKFILL LAYOUT PLAN (3 OF 3)					
	PROJECT No. 07-1413-0074/2500			FILE No. 0714130074-2000.A.06		
	DESIGN	BW	04JUL08	SCALE	AS SHOWN	REV. 0
	CADD	MJH	04JUL08	2100-06		
	CHECK	-	-			
	REVIEW	-	-			

2100-10	TYPICAL SECTIONS AND DETAILS
DRAWING NO.	REFERENCES

REV	DATE	DES	REVISION DESCRIPTION	CADD	CHK	RVV
0	01AUG08	BW	ISSUED FOR CONSTRUCTION	EA	-	-
1	18JUL08	BW	ISSUED FOR REVIEW	EA	-	-