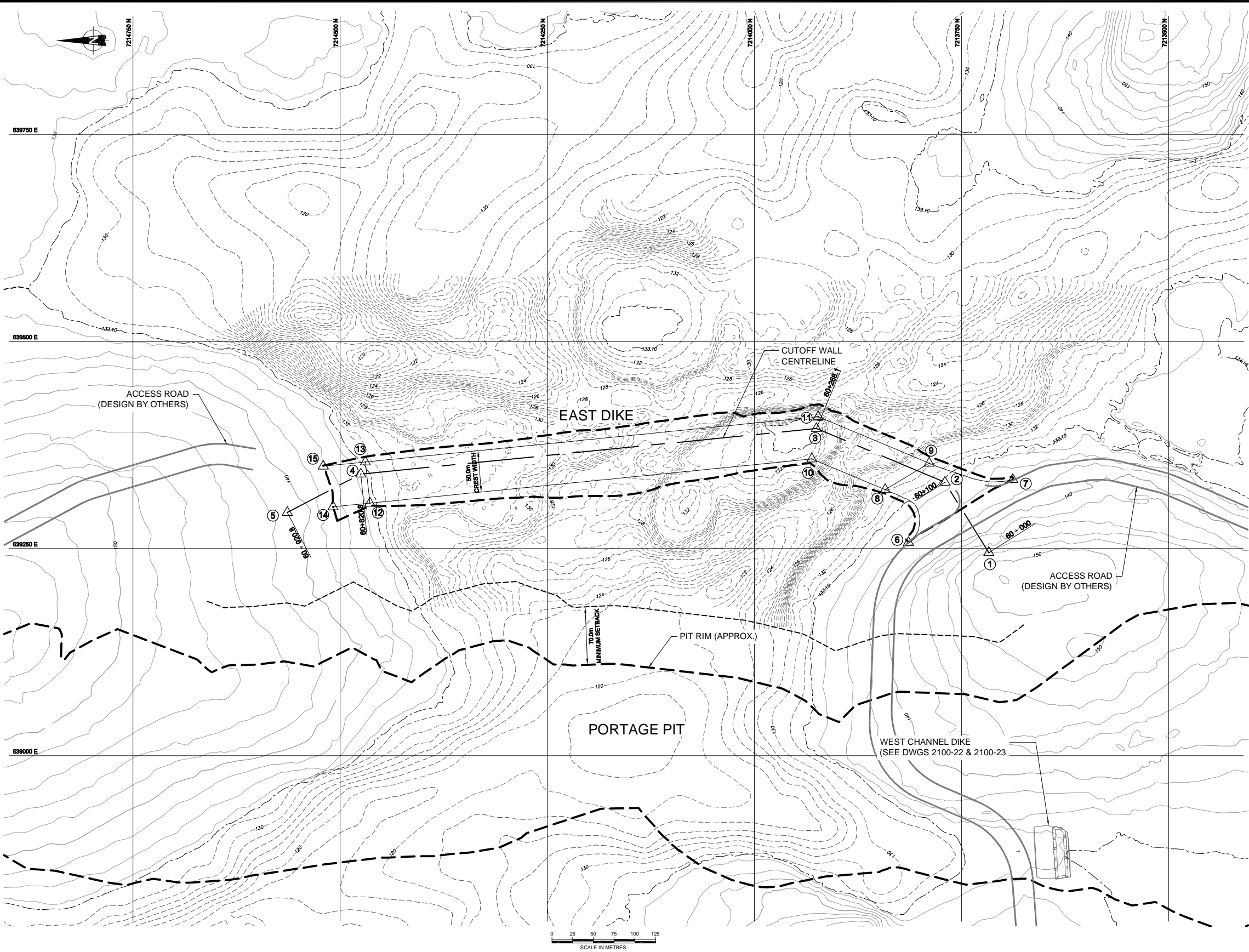


REVISION DATE: 08/08/01 08:04AM By: ASalvador CADD FILE: N:\Bur-Graphics\Projects\2007\1413\07-1413-0074\Drafting\2500c\Task-1000\0714130074-2000.A.03.dwg



LEGEND:

- LAND-BASED TOPOGRAPHIC MAJOR CONTOURS INTERVAL 10m
- LAND-BASED TOPOGRAPHIC MINOR CONTOURS INTERVAL 2m
- BATHYMETRIC MAJOR CONTOURS INTERVAL 10m
- BATHYMETRIC MINOR CONTOURS INTERVAL 2m.
- DETAILED BATHYMETRIC CONTOUR AT MAJOR INTERVAL 2m.
- DETAILED BATHYMETRIC CONTOUR AT MINOR INTERVAL 0.5m.
- SHORE LINE
- PIT FOOTPRINT
- SETOUT POINT
- SETBACK LIMIT

NOTES:

- ALL DIMENSIONS ARE IN METRES UNLESS OTHERWISE NOTED.
- ALL ELEVATIONS ARE IN METRES ABOVE SEA LEVEL (MASL), UNLESS OTHERWISE NOTED.
- GRID REFERENCE: NAD 83, UTM ZONE 14.
- CONTOUR INFORMATION ON LAND SUPPLIED BY AGNICO-EAGLE MINES LIMITED (AEM), MEADOWBANK DIVISION.
- LAKEBED SURFACE BASED ON BATHYMETRIC AND SEISMIC SURVEYS BY GOLDER ASSOCIATES LTD., 2006. DETAILED BATHYMETRY (0.5m CONTOUR INTERVAL) BASED ON 2008 SURVEY.
- LAKE CONTOURS ARE BASED ON SURVEYED LAKE SURFACE ELEVATIONS: SECOND PORTAGE LAKE = 133.1m
- TRAFFIC BERMS NOT SHOWN FOR CLARITY - 1.9m HEIGHT REQUIRED FOR HAUL TRUCK TRAFFIC.

REFERENCE:

- PIT DESIGN BY AEM, JUNE 17,2008.

EAST DIKE CUTOFF WALL CENTRELINE SETOUT TABLE


POINT ID	CHAINAGE	EASTING	NORTHING
1	60+000.0	639245.2	7213716.9
2	60+100.0	639330.0	7213770.0
3	60+268.1	639395.0	7213925.0
4	60+820.8	639340.0	7214475.0
5	60+920.8	639293.7	7214563.6

EAST DIKE ROCKFILL SETOUT TABLE

POINT ID	EASTING	NORTHING	ELEV
6	639257.5	7213814.0	139.0
7	639333.3	7213687.9	139.0
8	639321.2	7213842.2	133.6
9	639353.1	7213788.9	133.6
10	639358.3	7213930.5	133.6
11	639409.3	7213922.9	133.6
12	639304.9	7214484.0	133.6
13	639354.6	7214469.6	133.6
14	639300.5	7214508.4	136.8
15	639349.5	7214520.3	136.3

THIS DRAWING IS THE PROPERTY OF GOLDER ASSOCIATES LTD. AND IS NOT TO BE LOANED OR REPRODUCED IN ANY WAY WITHOUT THE PERMISSION OF GOLDER ASSOCIATES LTD.


PROJECT



AGNICO-EAGLE MINES LIMITED
MEADOWBANK GOLD PROJECT
NUNAVUT

TITLE

**EAST DIKE
ROCKFILL SETOUT PLAN**



PROJECT No.	07-1413-0074/2500	FILE No.	0714130074-2000.A.03
DESIGN	BW	04JUL08	SCALE AS SHOWN
CADD	MJH	04JUL08	REV. 0
CHECK	-	-	
REVIEW	-	-	

2100-03

REV	DATE	DES	REVISION DESCRIPTION	CADD	CHK	RVW	STAMP
0	01AUG08	BW	ISSUED FOR CONSTRUCTION	EA	-	-	
1	25JUL08	BW	ISSUED FOR REVIEW	EA	-	-	
2							
3							
4							
5							
6							
7							
8							
9							
10							
11							
12							
13							
14							
15							
16							
17							
18							
19							
20							
21							
22							
23							
24							
25							
26							
27							
28							
29							
30							
31							
32							
33							
34							
35							
36							
37							
38							
39							
40							
41							
42							
43							
44							
45							
46							
47							
48							
49							
50							
51							
52							
53							
54							
55							
56							
57							
58							
59							
60							
61							
62							
63							
64							
65							
66							
67							
68							
69							
70							
71							
72							
73							
74							
75							
76							
77							
78							
79							
80							
81							
82							
83							
84							
85							
86							
87							
88							
89							
90							
91							
92							
93							
94							
95							
96							
97							
98							
99							
100							
101							
102							
103							
104							
105							
106							
107							
108							
109							
110							
111							
112							
113							
114							
115							
116							
117							
118							
119							
120							
121							
122							
123							
124							
125							
126							
127							
128							
129							
130							
131							
132							
133							
134							
135							
136							
137							
138							
139							
140							
141							
142							
143							
144							
145							
146							
147							
148							
149							
150							
151							
152							
153							
154							
155							
156							
157							
158							
159							
160							
161							
162							
163							
164							
165							
166							
167							
168							
169							
170							
171							
172							
173							
174							
175							
176							
177							
178							
179							
180							
181							
182							
183							
184							
185							
186							
187							
188							
189							
190							
191							
192							
193							
194							
195							
196							
197							
198							
199							
200							
201							
202							
203							
204							
205							
206							
207							
208							
209							
210							
211							
212							
213							
214							
215							
216							
217							
218							
219							
220							
221							
222							
223							
224							
225							
226							
227							
228							
229							
230							
231							
232							
233							
234							
235							
236							
237							
238							
239							
240							
241							
242							
243							
244							
245							
246							
247							
248							
249							
250							
251							
252							