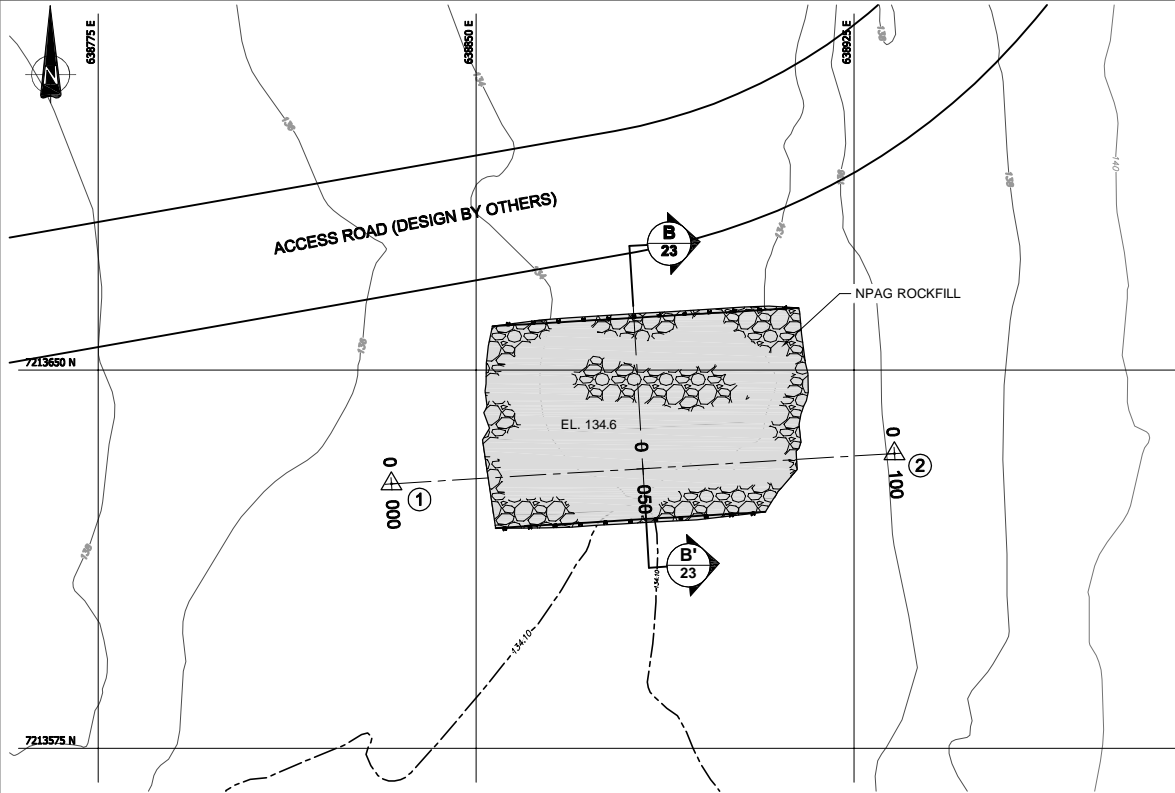
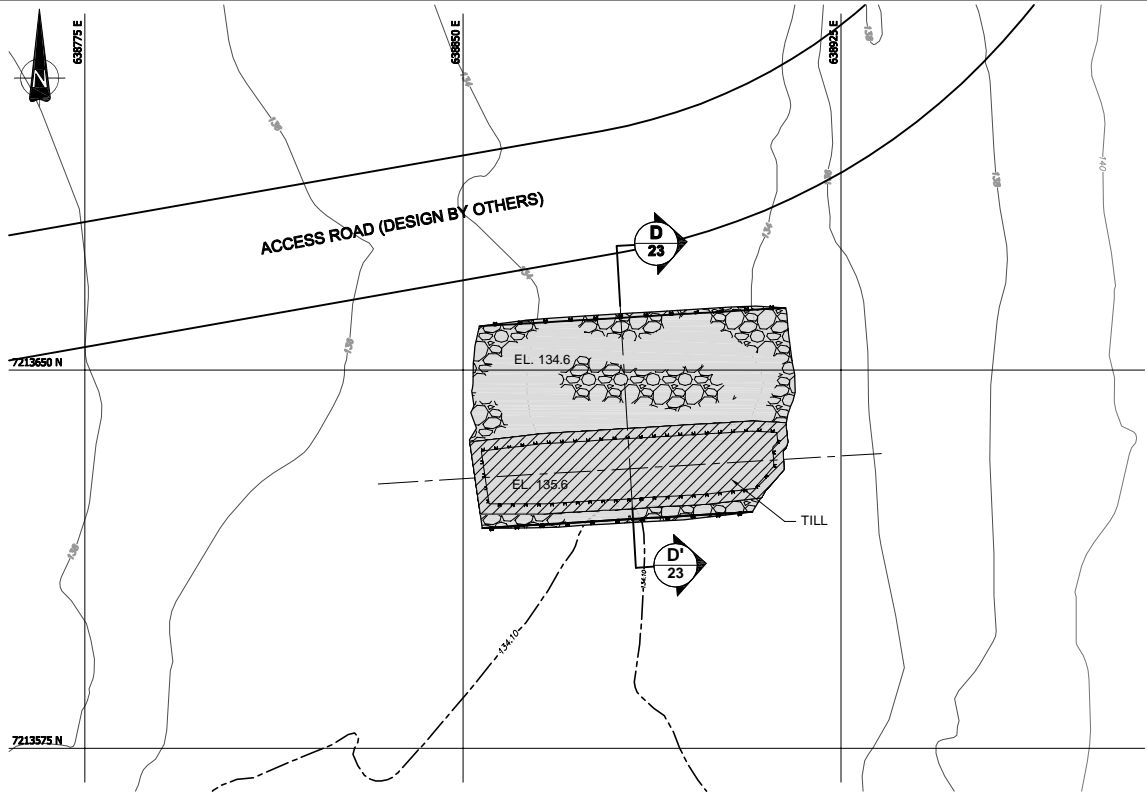


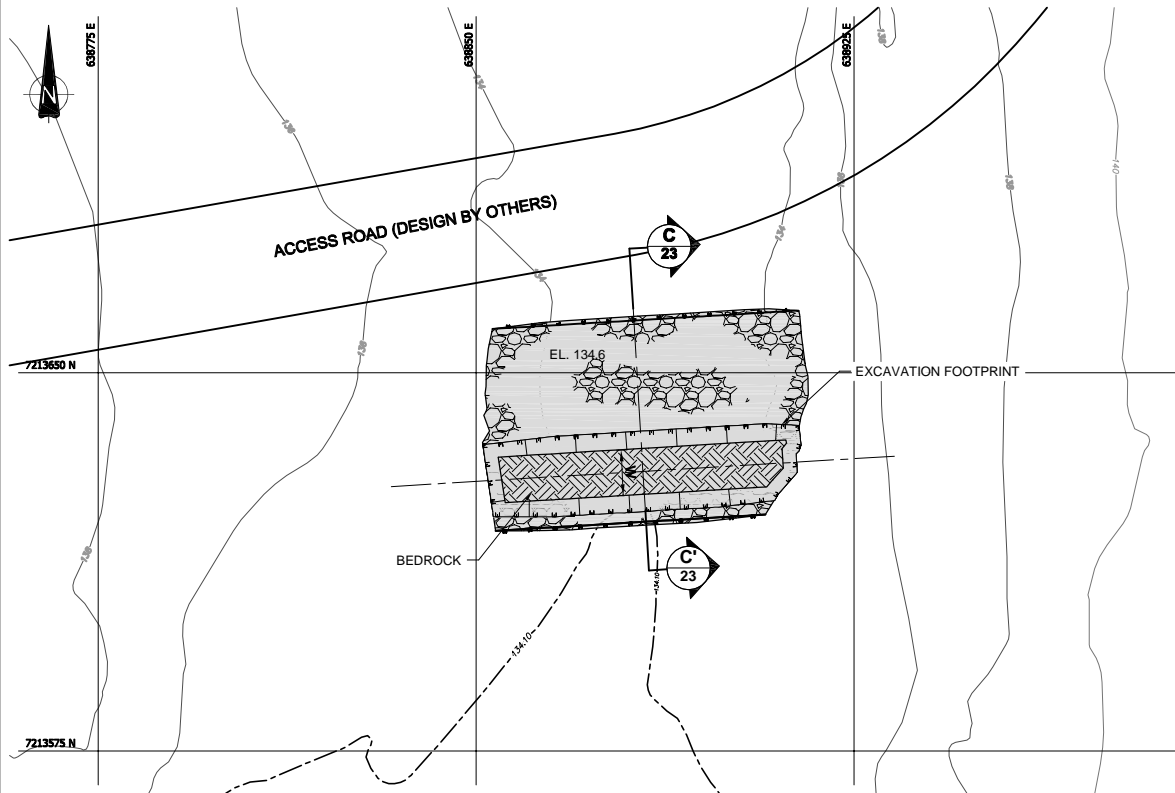
CADD FILE: N:\Bur-Graphics\Projects\2007\1413\07-1413-0074-0074\Drafting\2500c\Task-1000\0714130074-2000.A.22.dwg
REVISION DATE: 08/08/01 03:04PM By: Etbella



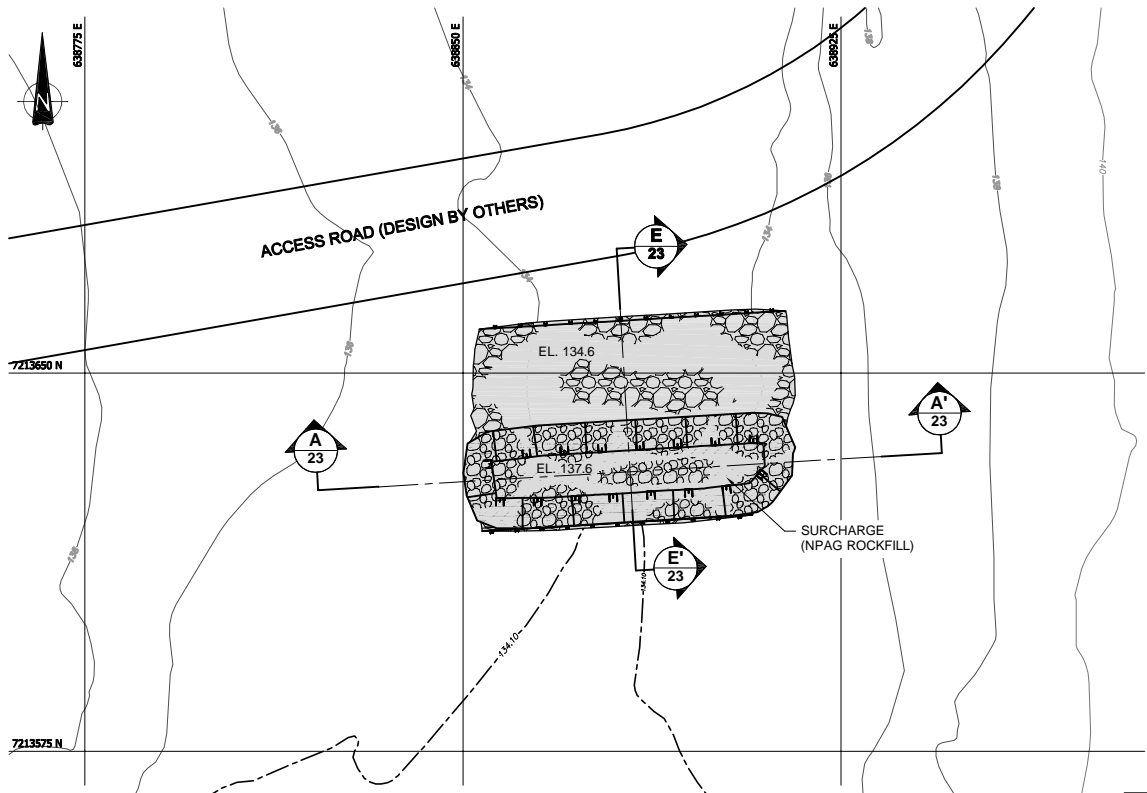
ROCKFILL PLACEMENT PLAN



TILL PLACEMENT PLAN



EXCAVATION PLAN



SURCHARGE PLACEMENT PLAN

- NOTES:**
- 1) ALL DIMENSIONS ARE IN METRES UNLESS OTHERWISE NOTED.
 - 2) ALL ELEVATIONS ARE IN METRES ABOVE SEA LEVEL (MASL), UNLESS OTHERWISE NOTED.
 - 3) CONTOUR INFORMATION ON LAND SUPPLIED BY AGNICO-EAGLE MINES LIMITED (AEM), MEADOWBANK DIVISION.
 - 4) LAKEBED SURFACE BASED ON BATHYMETRIC AND SEISMIC SURVEYS BY GOLDER ASSOCIATES LTD., 2006. DETAILED BATHYMETRY (0.5M CONTOUR INTERVAL) BASED ON 2008 SURVEY.
 - 5) WIDTH OF EXCAVATION AND TILL PLACEMENT TO BE CONFIRMED BASED ON FIELD CONDITIONS.
 - 6) RATIO OF H/W IS LESS THAN 1/3, WHERE H IS HYDRAULIC HEAD AS DEPTH FROM LAKE LEVEL TO BASE OF EXCAVATION, AND W IS WIDTH OF TILL CORE AT BASE OF EXCAVATION.
 - 7) TILL TO BE COMPACTED WITH 4 PASSES OF A 10 TONNE SHEEPSFOOT ROLLER. MAXIMUM LIFT THICKNESS OF TILL IS 0.5M.
 - 8) TILL TO HAVE MINIMUM FINES CONTENT (PASSING #200 SIEVE) OF 30% BY MASS AND BOULDERS REMOVED.
 - 9) BEDROCK SURFACE SHALL BE CLEARED OF LOOSE MATERIAL, SMOOTHED OF OVERHANGS, IRREGULARITIES TO PROVIDE A REGULAR SURFACE.
 - 10) LAKE CONTOURS ARE BASED ON SURVEYED LAKE SURFACE ELEVATIONS: SECOND PORTAGE LAKE = 133.1m
 - 11) WIDTH OF ROCKFILL DOWNSTREAM OF EXCAVATION MAY BE VARIED TO ALLOW ACCESS.

EXCAVATION CENTRELINE SETOUT TABLE		
POINT ID	EASTING	NORTHING
1	638833.2	7213627.4
2	638833.0	7213633.5

LEGEND:	
	LAND-BASED TOPOGRAPHIC MAJOR CONTOURS INTERVAL 10m
	LAND-BASED TOPOGRAPHIC MINOR CONTOURS INTERVAL 2m
	BATHYMETRIC MAJOR CONTOURS INTERVAL 10m
	BATHYMETRIC MINOR CONTOURS INTERVAL 2m
	SHORE LINE
	BEDROCK
	TILL
	NPAG ROCKFILL

PROJECT		AGNICO-EAGLE MINES LIMITED MEADOWBANK GOLD PROJECT NUNAVUT	
AEM		TITLE	
		WEST CHANNEL DIKE PLAN	
PROJECT No. 07-1413-0074/2500		FILE No. 0714130074-2000.A.22	
DESIGN	BW	16JUN08	SCALE AS SHOWN
CADD	EA	16JUN08	REV. 0
CHECK	-	-	
REVIEW	-	-	



2100-23	WEST CHANNEL DIKE PROFILE AND SECTION
DRAWING NO.	REFERENCES

REV	DATE	DES	REVISION DESCRIPTION	CADD	CHK	RVW
01	AUG08	BW	ISSUED FOR CONSTRUCTION	EA	-	-
02	JUN08	BW	ISSUED FOR REVIEW	EA	-	-

STAMP
