

**Progress: 0% done as of today**  
**(0T done/~5,000 T total)**

**Limits**

- Identified on the field by survey: dump only between the two stakes

**Traffic Control**

- Refer to legend for details, proper signs will be put on the field.
- Candles will be placed to delineate the truck path on the dike.

**Fleet**

- Haul trucks: 100t, 150t
- Regular advances will be provided to monitor activities

**PRIORITY Sequence & Method**

**Build the finger dikes in the purple area by covering the toe of the dike with dumped material.**

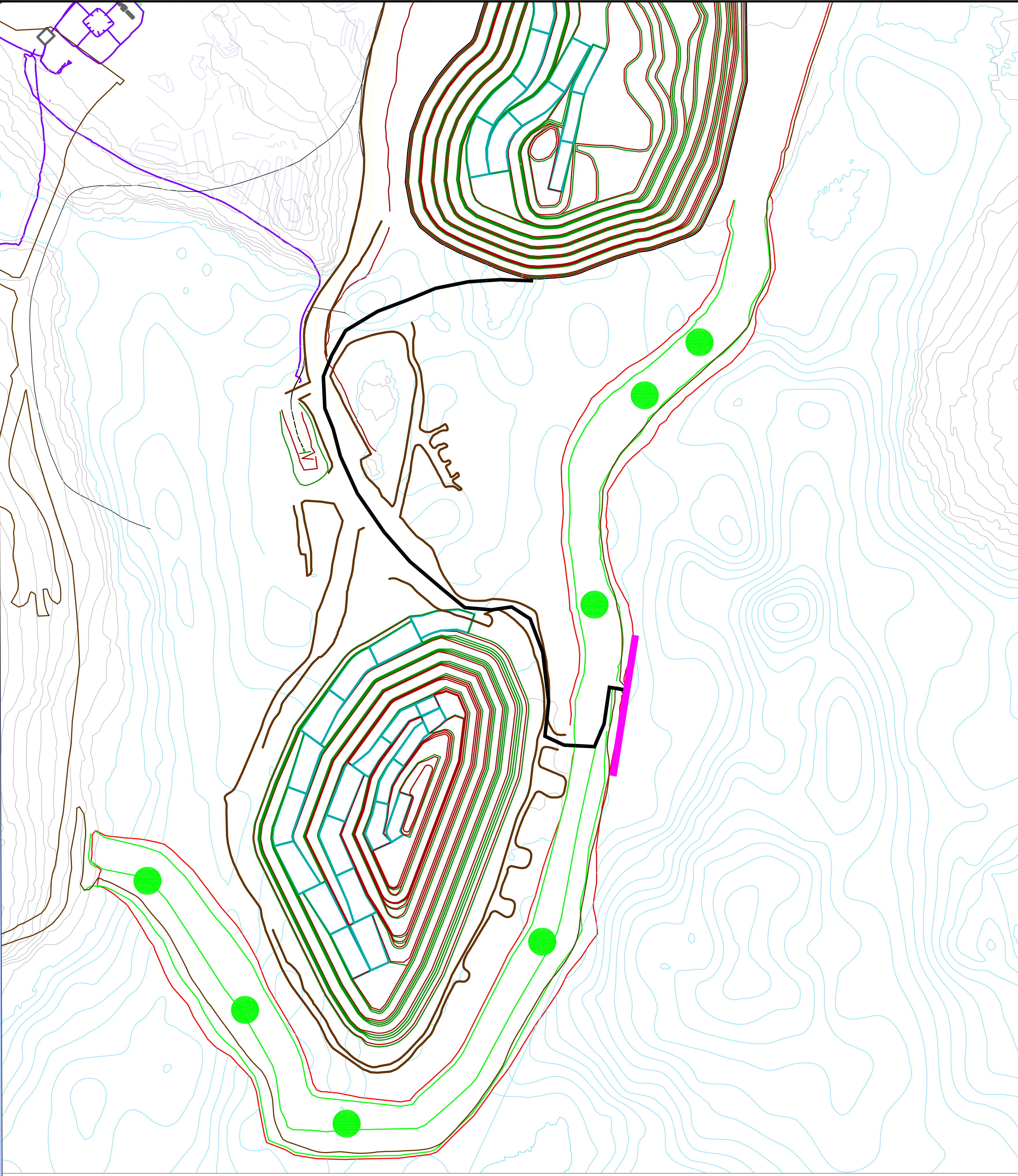
**Haul trucks back up and dump short of the berm using the dozer operator as a spotter. Dozer then gently nudges the material over the berm. Following this method no equipment will go near the ice on the lake.**

**Material Properties**

- Only NPAG (soapstone) is permitted.
- No size limits, boulders acceptable
- Loads containing powdered soapstone shall be dumped on NPAG Goose dump.

**General Guidelines**

- JHA required
- No snow removal is required
- Beware of marked instruments on the field while hauling; haul trucks must stay within the candle delineated truck path.
- Dispatcher and haul truck drivers shall be aware of their dumping location and Wenco towers shall be placed appropriately.



KEY PLAN

GENERAL NOTES

Trucks traffic

Instruments

THE INFORMATION HEREIN IS THE PROPERTY OF AGNICO-EAGLE LTD. AND MUST BE RETURNED UPON REQUEST. UNLESS WRITTEN OTHERWISE, ANY COPYING, REPRODUCTION, TO OTHERS AND ANY USE EXCEPT THAT FOR WHICH IT IS LOANED ARE PROHIBITED. © AGNICO-EAGLE LTD.

TITLE	# DWG.

REFERENCE DRAWINGS

REV.	DATE	DESCRIPTION	BY	APP.	CLIENT

AGNICO EAGLE  
MEADOWBANK

TITLE  
AGNICO-EAGLE - MEADOWBANK DIVISION  
BAY GOOSE DIKE  
FINGER DIKES

DESIGN FOR CONSTRUCTION

DRAWN BY	R.Cousineau	DATE	03/04/2015
CHECKED BY			
APPROVED BY			
SCALE	N.T.S.	DATE	
DRAWING NO.			
PROJECT NO.	REVISION	SHEET	1 / 1