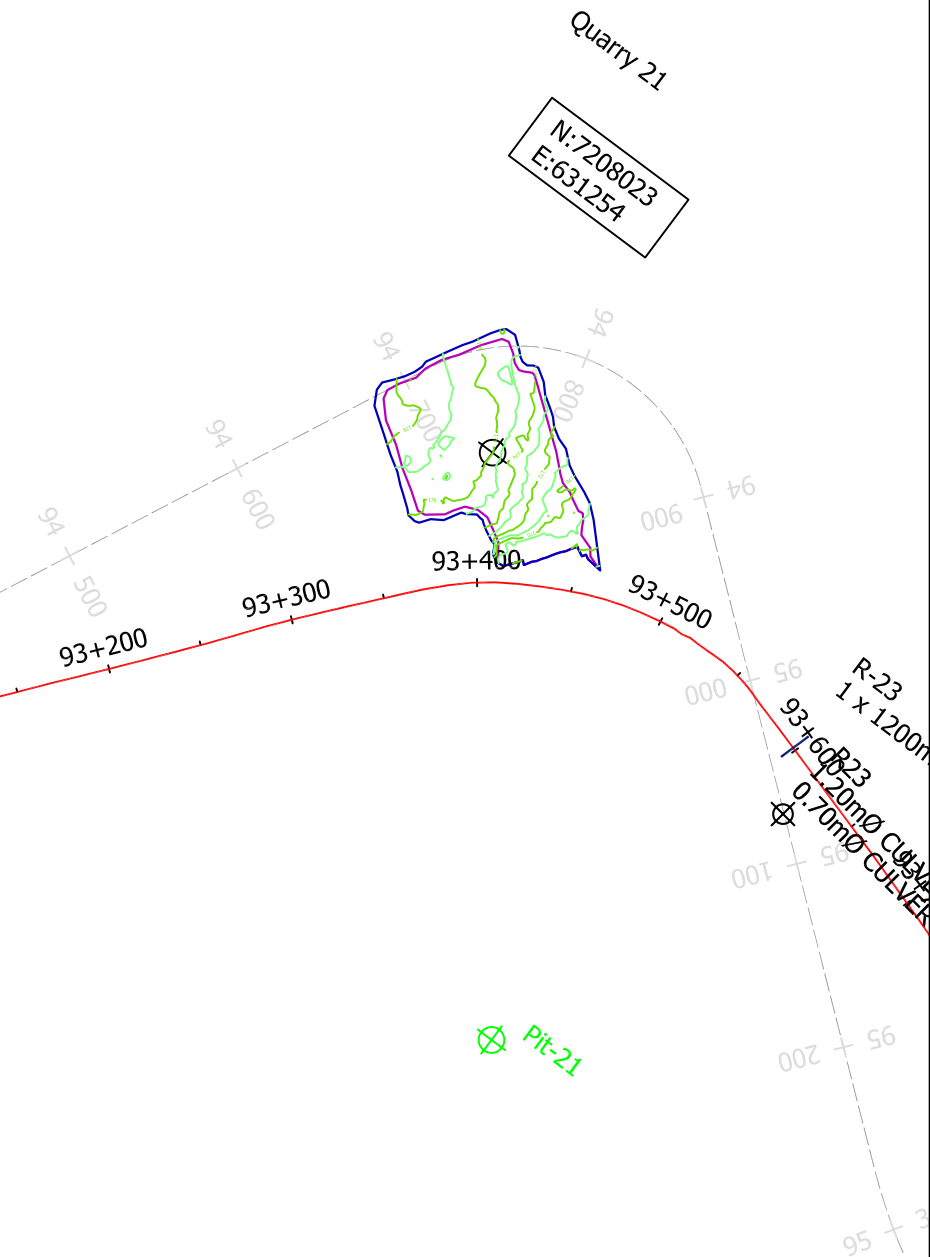
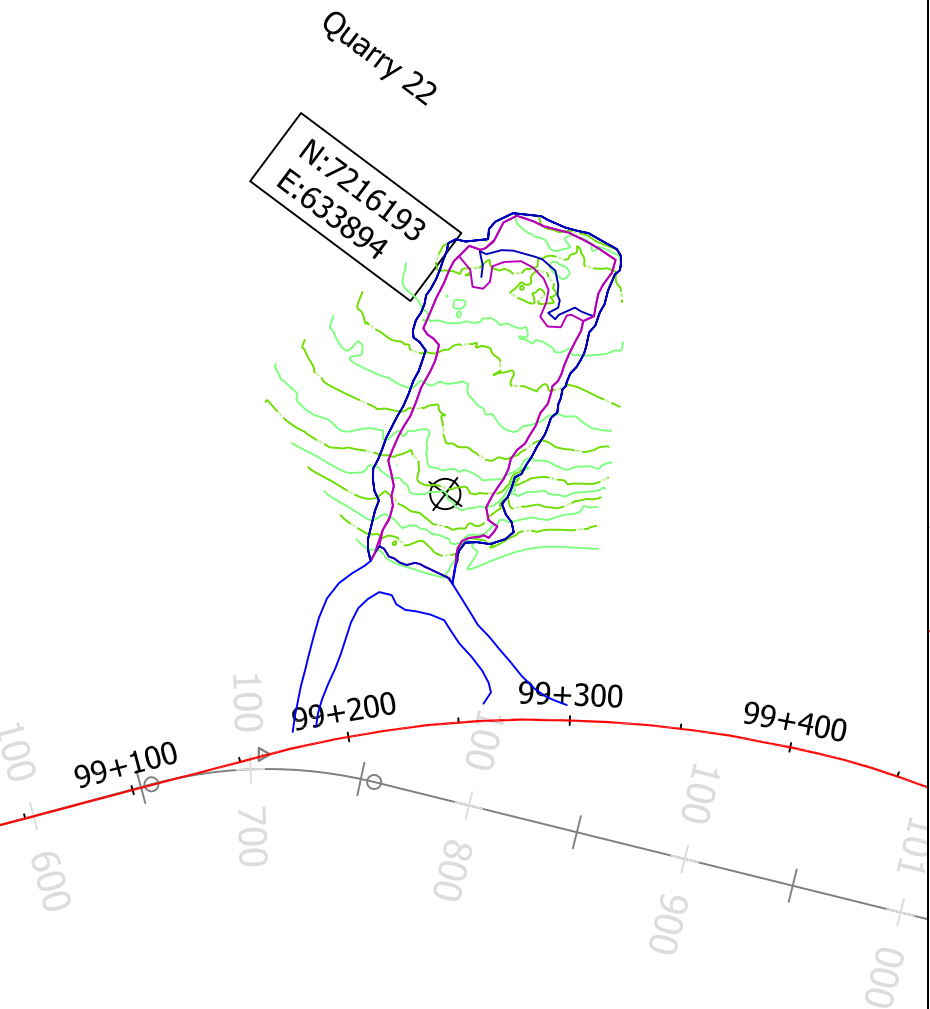






Quarry 20 - 1m contour intervals				
Bench Elevation	BCM Excavated m3	Crest surface Area m2	Toe surface area m2	Survey Date
167	55,360	9,996	7,732	Feb. 5, 2008



Quarry Z2 Active Pit - 1m contour intervals			
Bench Elevation	BCM Excavated m3	Crest surface Area m2	Toe surface area m2
1+7	65,049	10,440	8,634
			May 4, 2008



GOLDER DATA					
	Lf1a-3	Existing Archaeological site		R02	River crossing (crossing structure and dimension)
	Pf1c-13	Proposed Quarry Site	— 120 —		Existing major contour (10m Topo)
	Existing Lake/Stream		—		Existing minor contour (Interpreted)
			— 1+000 —		Proposed centreline of road

<p>NOTES:</p> <p>Query Data Summarised in Table 1</p> <p>100m stations are referenced to D+000 N 7135821.224 E 646026.157</p>	<p>Agnico-Eagle Mines Ltd</p>	
	<p>NINJAULT</p>	
<p>As constructed Quarry Drawing Figure 6</p>	<p>Meadowbank Gold Project</p>	
	<p>Tehnek Access Road Construction</p>	
<p>Query 21 to Query 22</p>	<p>Query 21 to Query 22</p>	
<p>MAT SERVICES LTD</p>	<p>NTS</p>	<p>May 4, 2008</p>
<p>Project: NTS</p>	<p>Client: NTS</p>	<p>Drawn: GCH/B</p>
<p>Scale: 1:500</p>	<p>Date: May 4, 2008</p>	<p>By: [Signature]</p>