



MEADOWBANK COMPLEX

# **Monitoring Program Summary Report**

**March 2025**

Type A Water License 2AM-MEA1530

# Table of Contents

**SECTION 1 • BACKGROUND ..... 3**

**SECTION 2 • WATER MANAGEMENT ..... 4**

2.1 WATER USAGE .....4

2.2 WASTE ROCK STORAGE FACILITY SEEPAGE .....4

2.3 CENTRAL DIKE SEEPAGE.....4

2.4 ASSAY ROAD SEEPAGE.....4

2.5 SEEPAGE AND RUNOFF FROM THE LANDFILL .....4

2.6 SEWAGE TREATMENT PLANT .....5

2.7 VAULT ATTENUATION POND EFFLUENT.....5

2.8 PHASER ATTENUATION POND .....5

2.9 EAST DIKE SEEPAGE EFFLUENT .....6

2.10 NON-CONTACT WATER.....8

2.11 IN-PIT DISPOSAL .....8

**SECTION 3 • SPILL MANAGEMENT ..... 9**

3.1 KM 87 SPILL FOLLOW UP .....11

## **SECTION 1 • BACKGROUND**

---

On June 13, 2020, Agnico Eagle received the minister's approval for the Water License 2AM-MEA1530 Amendment No.4. This amendment was required to authorize changes to the previously approved uses of water and deposit of wastes needed to reflect the expansion of the Whale Tail Mine.

As required under Part I, Item 21 of Type A Water License 2AM-MEA1530 (Amendment No.4), this report documents the water management and monitoring activities at the mine site for the month. This includes water usage, Vault Attenuation Pond and Phaser Attenuation Pond discharge, East Dike Seepage discharge water quality, RSF Seepage, Central Dike Seepage, Assay Road Seepage, sewage treatment plant discharge water quality (which is directed to the onsite storm water management pond), an update to the In-Pit disposal and follow up to the AWAR spill at KM 87.

In addition, a summary of spills/actions for the month is reported.

## SECTION 2 • WATER MANAGEMENT

### 2.1 WATER USAGE

Freshwater usage for the month is summarized in Table 2.1 below.

**Table 2.1: Freshwater Usage (m<sup>3</sup>)**

Water Location	Source Lake	Jan	Feb	March	Total
Camp	Third Portage Lake	2,768	2,515	2,695	<b>7,978</b>
Mill (freshwater tank)	Third Portage Lake	79,888	52,540	50,018	<b>182,446</b>
Emulsion plant	Unnamed Lake	0	0	0	<b>0</b>
<b>Total Freshwater Usage (m<sup>3</sup>)</b>		<b>82,656</b>	<b>55,055</b>	<b>52,713</b>	<b>190,424</b>
<b>Ore Water (m<sup>3</sup>)</b>	Ore	4,405	3,415	3,091	<b>10,911</b>
<b>Reclaim Water Usage (m<sup>3</sup>)</b>	Tailings Pond	326,315	278,145	331,041	<b>935,501</b>

### 2.2 WASTE ROCK STORAGE FACILITY SEEPAGE

In March, no water was pumped back to Portage Pit from the ST-16 sump. No sampling was completed at WEP1 (Station ST-30) or WEP2 (station ST-31) during the month as they were frozen.

Agnico Eagle completed inspections at the Portage and Vault RSFs, no non-conformities were found during the month.

### 2.3 CENTRAL DIKE SEEPAGE

In March, 6,188 m<sup>3</sup> of water was pumped from ST-S-5 sump to Portage Pits.

Sampling was conducted minimally on a monthly basis at ST-S-5 as per the requirements of the NWB Water License.

Visual inspections are completed monthly, by the Environment Department, as well as daily monitoring of piezometric values.

### 2.4 ASSAY ROAD SEEPAGE

In March, no water was pumped from the mill trench back to the mill due to frozen conditions. Routine inspections occurred during the month.

### 2.5 SEEPAGE AND RUNOFF FROM THE LANDFILL

The landfill was inspected weekly, and no seepage or runoff was observed.

## 2.6 SEWAGE TREATMENT PLANT

One (1) effluent wastewater sample was collected at the onsite sewage treatment plant (STP) in March. The Seprotech STP results are shown in Table 2.6.1 below; the LJ-Mix STP results are shown in Table 2.6.2. The effluent from the STP is discharged to the Stormwater Management Pond.

In March, no water was pumped from the Stormwater Management Pond to Portage Pits.

**Table 2.6.1: Seprotech Effluent Results**

Parameters	Units	3/3/2025
Unionized Ammonia (NH <sub>3</sub> )	mg N/L	0.10
Ammonia-Nitrogen (NH <sub>3</sub> -NH <sub>4</sub> )	mg N/L	36
Total Kjeldahl Nitrogen	mg N/L	39
BOD-5	mg/L	7
COD	mg/L	35
Total Suspended Solids	mg/L	7
Nitrate	mg N/L	4.72
Nitrite	mg N/L	1.38
pH*	Units	6.90
Fecal Coliform	UFC/100 mL	10
Total Coliform	UFC/100 mL	100

\*Parameter measured by STP operators

**Table 2.6.2: LJ-Mix Effluent Results**

Parameters	Units	3/3/2025
Unionized Ammonia (NH <sub>3</sub> )	mg N/L	0.016
Ammonia-Nitrogen (NH <sub>3</sub> -NH <sub>4</sub> )	mg N/L	23
Total Kjeldahl Nitrogen	mg N/L	27
BOD-5	mg/L	11
COD	mg/L	34
Total Suspended Solids	mg/L	6
Nitrate	mg N/L	11.7
Nitrite	mg N/L	0.548
pH*	Units	6.20
Fecal Coliform	UFC/100 mL	2,100
Total Coliform	UFC/100 mL	3,000

\*Parameter measured by STP operators

## 2.7 VAULT ATTENUATION POND EFFLUENT

No discharge has occurred from the Vault Attenuation Pond since October 9, 2017.

## 2.8 PHASER ATTENUATION POND

No water was pumped from the Phaser Attenuation Pond during the month.

No water was transferred from BB Phaser Pit sumps to the Phaser Attenuation Pond during the month.

## 2.9 EAST DIKE SEEPAGE EFFLUENT

Discharge to Second Portage Lake occurred March 1<sup>st</sup> to 4<sup>th</sup> and March 23<sup>rd</sup> to 31<sup>st</sup>. A total of 3,446 m<sup>3</sup> was discharged during the month.

Eleven (11) effluent samples, and one (1) reanalyzed sample, were collected at ST-8 during the month. The TSS results did not exceed the maximum monthly average concentration (15 mg/L), however the maximum allowable grab sample concentration (30 mg/L), permitted by the Water License, Part F, Item 7 was exceeded in one instance at 32 mg/L on March 4<sup>th</sup>. Results from the sample collected on March 4<sup>th</sup>, was re-analyzed for confirmation due to the discrepancy between the onsite internal TSS (22.5 mg/L) and the external result (32 mg/L). The re-analyzed result shows a level of TSS at 30 mg/L. The TSS monitoring results for March are provided in Table 2.9.1 below.

**Table 2.9.1 East Dike Seepage (ST-8 / ST-MMER-3) Results for TSS**

Parameter	Unit	Sample Date						
		3/3/2025	3/4/2025	3/4/2025*	3/23/2025	3/24/2025	3/25/2025	3/26/2025
Total Suspended Solids (TSS)	mg/L	2	32	30	5	6	4	5

Parameter	Unit	Sample Date					Monthly Average
		3/27/2025	3/28/2025	3/29/2025	3/30/2025	3/31/2025	
Total Suspended Solids (TSS)	mg/L	6	3	3	3	2	8.4

\*Sample result is a re-analysis completed of the original sample collected on March 4<sup>th</sup>, 2025, by the accredited laboratory and included in the monthly average calculation.

During the routine internal sampling of the East Dike Discharge (ST-8 / ST-MMER-3) final discharge point on March 4<sup>th</sup> a sample was collected and brought back to the on-site Environment Lab for analysis, during the analysis an elevated turbidity result was recorded. As a result, additional confirmatory samples were collected. The confirmatory samples also indicated turbidity was elevated.

Due to the elevated turbidity readings, the discharge to the environment was stopped as a precaution and water was redirected into site water management infrastructure.

Total Suspended Solids (TSS) samples were collected prior to and following the suspension of the discharge to Second Portage Lake and sent to an external lab for analysis (Table 2.9.2). Additional samples were collected on March 4<sup>th</sup> following the suspension of the discharge and sent to external labs for analysis and comparison to MDMER and Water License Parameters.

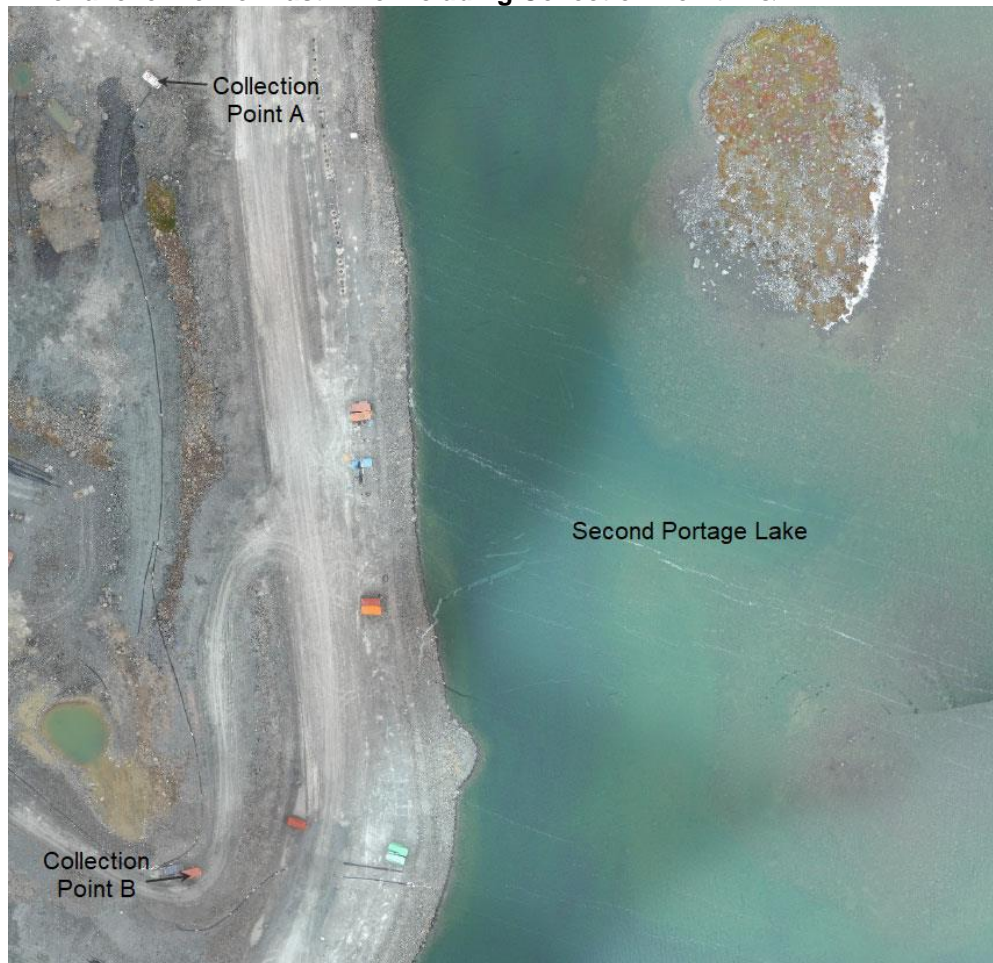
**Table 2.9.2: TSS Results for East Dike Seepage Samples**

Date	Sample Station Name	External TSS (mg/L)	Internal TSS (mg/L)	Internal Turbidity (NTU)
2025-03-03	ST-8/ST-MMER-3	2	4.5	2.24
2025-03-04	ST-8/ST-MMER-3	32	22.5	11.7
2025-03-04*	ST-8/ST-MMER-3	30*	22.5	11.7
Discharge to Second Portage Lake Suspended				
2025-03-04	ST-S-1	20	-	17
2025-03-05	ST-S-1	10	31.2	5.33
2025-03-06	ST-S-1	6	15	4.25
2025-03-07	ST-S-1	5	4.8	4.41

\*Sample result is a re-analysis completed of the original sample collected on March 4<sup>th</sup>, 2025, by the accredited laboratory.

The cause of the spike in turbidity coincides with the resumption of water movement from seepage collection point A to seepage collection point B for discharge to the environment (Figure 2.1). Seepage collection point A had not been pumped in ~14 days, as the line was frozen due to a faulty heat trace cable.

**Figure 2.1 Aerial overview of East Dike including Collection Point A & B**



Monthly sampling pursuant to the Water License was also conducted at ST-8 in March. The results are shown in Table 2.9.3 below.

**Table 2.9.3: March Monthly Monitoring Results**

Parameters	Unit	Sample Date	
		3/3/2025	3/24/2025
pH*	pH units	8.17	8.02
Aluminum	mg/L	0.0386	0.0854
Sulphate	mg/L	11	8.4
Arsenic	mg/L	0.00094	0.00099
Copper	mg/L	0.00142	0.00110
Nickel	mg/L	< 0.0010	< 0.0010
Lead	mg/L	< 0.00020	< 0.00020
Zinc	mg/L	< 0.0050	< 0.0050
Radium 226	mg/L	< 0.0050	< 0.0050
Total Cyanide	mg/L	< 0.00050	< 0.00050
Turbidity*	NTU	2.24	0.81
Un-Ionized Ammonia	mg/L	< 0.00059	< 0.00044

\* Parameter measured by technician

## 2.10 NON-CONTACT WATER

Portage Area East diversion ditch (ST-5) and West diversion ditch (ST-6) were not sampled in March due to the diversion ditches being frozen. Sampling is conducted during open water conditions.

## 2.11 IN-PIT DISPOSAL

Tailings were disposed of in Portage Pits and reclaim water was taken from Portage Pits for the month.

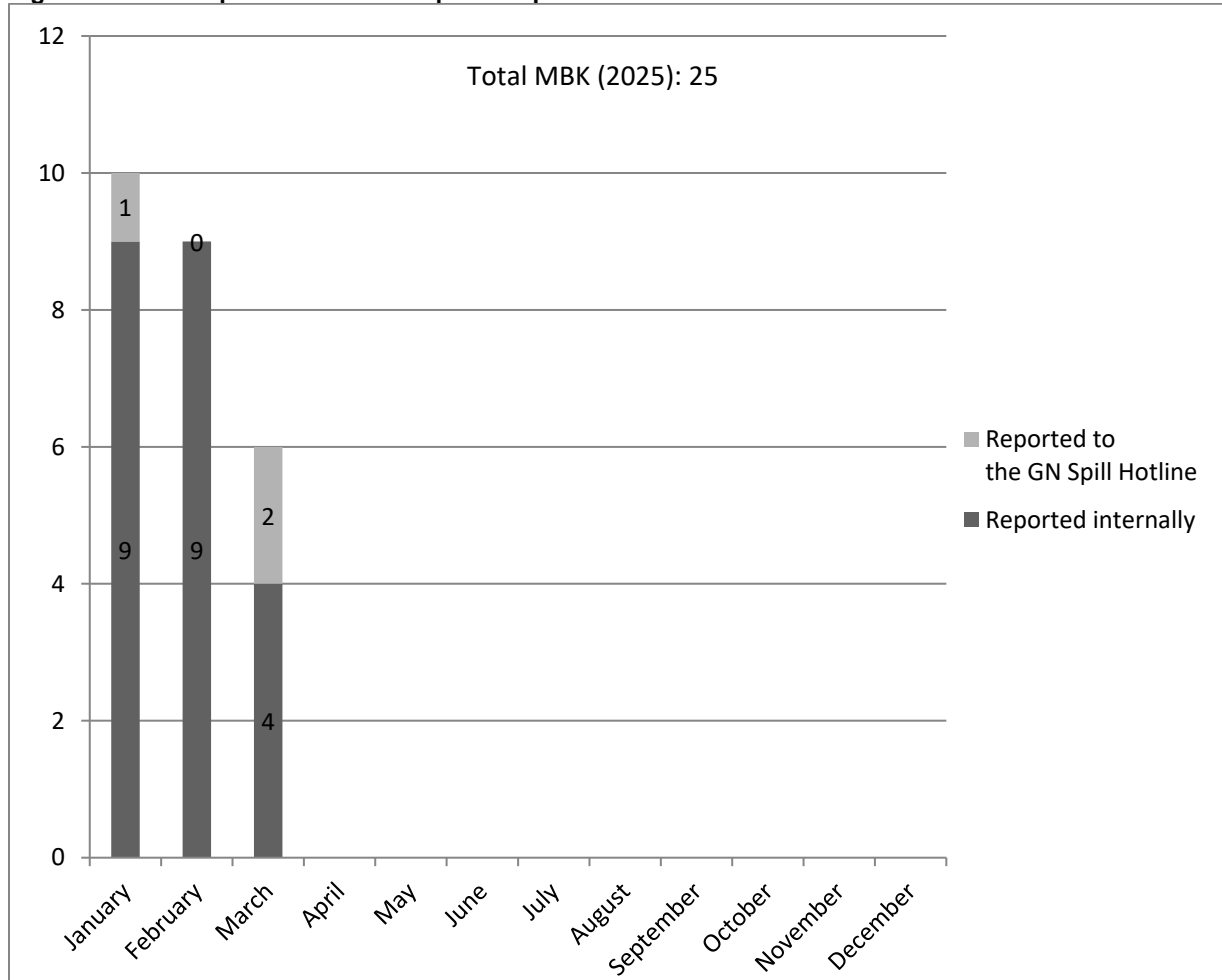


### SECTION 3 • SPILL MANAGEMENT

Figure 3.1 shows reported and non-reported spills for 2025 broken down per month and Table 3.1 summarizes Agnico Eagle spill reports for March.

Six (6) spills occurred on site during the month with two (2) being reported to regulators. Spills were contained and cleaned, contaminated material was disposed of in the appropriate area, and the clean-up actions were monitored closely by the Environment Department.

**Figure 3.1 2025 Reported and Non-Reported Spills**



**Table 3.1: Summary of Agnico Eagle Internal and Reported Spill Reports, March 2025**

Date of Spill	Hazardous Material	Quantity	Units (L / Kg / m <sup>3</sup> )	Location	Cause of spill	Clean-up action taken
3/3/2025	Diesel Fuel	15	L	Fuel Farm	Equipment malfunction	Contaminated soil was picked up and disposed in the yellow bin.
3/4/2025	TSS	27	Kg	East Dike Discharge (ST-8/ST-MMER-3)	Operational issue	Due to the elevated turbidity readings, the discharge to the environment was stopped as a precaution and water was redirected into site water management infrastructure.
3/6/2025	Hydraulic Oil	300	L	EMR Yard	Mechanical Failure	The contaminated materials were segregated then collected and brought to the appropriate Hazmat Disposal Facilities.
3/6/2025	Waste Oil	2	L	Beside Blue Coverall	Improper storage	Contaminated soil was picked up and disposed in the yellow bin.
3/7/2025	Coolant	20	L	Winter Parking	Equipment failure	The contaminated material was collected and brought to the roll-off bin to be disposed off at the Meadowbank Tailings Storage Facility.
3/31/2025	Hydraulic Oil	10	L	West Road Near Y	Equipment failure	Contaminated soil was picked up and disposed in the yellow bin.

### **3.1 KM 87 SPILL FOLLOW UP**

In March, Agnico Eagle completed inspections at KM 87 spill areas. No samples were collected during the month due to frozen conditions.