



# AGNICO EAGLE

## Acceptable and Unacceptable Types of Waste for the Meadowbank Complex Landfill Including electronic (e-waste), tires and vehicles/machinery Version 1

**From:** Erika Voyer – Closure and Reclamation Lead, Agnico Eagle Meadowbank

**Date:** 2024-10-29

---

### 1. Introduction

The Meadowbank mine of Agnico Eagle is currently working on its Closure plan, including the waste management strategies. Waste management procedures need to be clearly defined for closure as large quantities of waste material will be produced, especially during the first years following the end of operation. During progressive closure, waste material will also be ready for disposal.

This memo aims to clarify the acceptable and unacceptable types of solid waste to be placed in the Meadowbank and Whale Tail landfills located within the waste rock storage facilities, as well as alternative disposal options for waste generated during the remaining period of operation and in closure.

This memo should be consulted in parallel with the following active management plans. Those plans will be updated in 2025 to reflect the content of this memo:

- Meadowbank Mine, Landfill Design and Management Plan, Version 6; March 2024
- Whale Tail Mine, Landfill Design and Management Plan, Version 5; March 2024
- Hazardous Materials Management Plan, Version 7, March 2022

### 2. List of Approved and Unapproved Waste to Landfill

The Meadowbank and Whale tail Landfill Design and Management Plans present lists of approved and unapproved waste for the landfill, as presented in Figure 1 and 2. In the scope of this memo, the lists from the management plans have been revised to categorize waste by type encompassing specific elements found on site. Table 1 available at the end of this memo presents waste type category acceptable and unacceptable for landfilling with alternative waste disposal options.

Table 1 should be used on site to ensure proper management of waste during progressive closure and after the end of operations.

Figure 1 – List of acceptable waste in Landfill as per Meadowbank Mine, Landfill Design and Management Plan (Version 6; March 2024) (same list as for Whale Tail Mine, Landfill Design and Management Plan, Version 5; March 2024)

### **3.2.1 Acceptable waste**

The following materials are acceptable for disposal at the landfills:

- Plastic (except expanded polystyrene);
- Steel, copper, aluminum, iron (most of this metal is recycled);
- Wood;
- Fiberglass insulation;
- Fiberglass;
- Roofing;
- Cardboard
- Concrete;
- Carpet;
- Bricks;
- Ceramics;
- Rubber;
- Empty caulking tubes;
- Hardened caulk;
- Clothing;
- Glass;
- Wire;
- Small appliances (with batteries removed);
- Gyproc;
- Ash (provided it has cooled to 60°C or less and follows procedures laid out in the Incinerator Management Plan);
- Composter output; and
- Vehicles and machinery (provided all liquids, grease, batteries, and electronics have been removed, see Section 3.3.2 for more details on ozone depleting substances).

**Figure 2 – List of unacceptable waste in landfill, Meadowbank Mine, Landfill Design and Management Plan** (Version 6; March 2024) (same list as for Whale Tail Mine, Landfill Design and Management Plan, Version 5; March 2024)

**3.3 UNACCEPTABLE WASTE FOR LANDFILLING**

Materials that are not listed above are unacceptable for placement at the landfills, unless approved in writing by the Meadowbank Environment and Critical Infrastructures Superintendent or General Supervisor Environment. These materials include:

- Organic matter including food, septic tank pumping or sludge from wastewater treatment, dead animals, paper;
- Food containers and wrappings, unless cleaned;
- Whole tires;
- Hazardous waste including mercury, medical waste, batteries, solvents, glues, ethylene glycol antifreeze, adhesives (except empty caulking tubes);
- Electronics;
- Light bulbs or Fluorescent Lamp Tube;
- Petroleum products, including materials contaminated with petroleum products; and
- Expanded polystyrene.

The following sections present more specific details on waste type and disposal options for electronic (e-waste), tires and vehicles/machinery.

**2.1. Electronic waste (e-waste)**

Electronic waste (e-waste) includes unwanted electronic equipment, such as smart devices and used cables, as well as batteries and fluorescent lights (including compact fluorescent lights). Electronic equipment contains toxins such as mercury, lead, cadmium, beryllium and arsenic. E-waste, if not managed properly, can be harmful to human health and to the environment. Fluorescent lights, for example, contain mercury and cannot be disposed of in regular garbage (*Government of Canada, <https://ised-isde.canada.ca/site/office-consumer-affairs/en/be-green-consumer/e-waste>*).

End of life electronic products stewardship programs are not regulated in Nunavut (<https://epra.ca/provincial-programs>). Northwest Territories end-of-life electronics recycling program is operated by The Government of the Northwest Territories (GNWT). The GNWT Electronics Recycling Program website presents the list of what type of electronic equipment can be recycled, as presented on Figure 3. In order to provide a specific list of e-waste to be recycled on site, Table 1 aligns with the list presented by the GNWT and with the current practices on site during operations, as reported annually in the Meadowbank Complex Annual Report. Telecom devices and solar panels have been added to the list.

**Figure 3 – List of recyclable electronics, Government of the Northwest Territories Electronics Recycling Program**



Source: <https://www.gov.nt.ca/ecc/en/services/waste-reduction-and-recycling/electronics-recycling-program>

## **2.2. Tires**

Tires can be landfilled or placed underground as presented in Table 1. Small tires can also be sent south for recycling as per our current practices on site during operations. These are common practices presented in closure plans of similar projects, as presented in Appendix A. The sections below present the landfilling and disposal underground options for waste tires, as a large amount of tires will need to be managed during the remaining period of operation and in closure.

Based on space availability of underground sectors ready for backfill and

### **2.2.1. Landfilling**

As per the active Meadowbank and Whale Tail Landfill Design and Management Plan, disposal of whole tires is not possible in the landfill. This is due to the risk of air and ice entrapment that could trigger settlements and stability issues for the landfill and its rockfill cover. The landfilling of whole tires can also be problematic due to the buoyancy issue caused mainly by trapping of gasses from landfill material decomposition. In terms of capacity, whole tires landfilling would also take up a lot of volume.

As rubber is acceptable to be landfilled, it is considered that cut or shredded tires could be landfilled. If tires are cut into large pieces, the pieces would need to be placed on the side to avoid as much as possible

large void that could promote water and ice accumulation, which could trigger settlement. During landfilling of tires pieces, limited amount of tires (cut or shredded) should be transported and placed in the landfill to avoid having large number of exposed tires stockpiles uncovered close to moving equipment, which would pose a fire hazard. Covering of tires pieces with NAG waste rock should be done promptly after placement in the landfill.

Landfilling tires pieces is a possible option, but will require extensive health and safety procedures, logistical planning, as well as strict waste placement procedures. Careful planning of capacity and volume estimate for placement of cut tires will also be required to ensure that landfill capacity remains available for other types of waste.

### **2.2.2. Underground disposal**

Tires are composed of relatively inert material. Tires could be placed in the underground mine for permanent storage, in the backfill of permafrost areas. Waste tires could be co-disposed with rockfill required for backfill. Encapsulation and freeze-back would occur, eliminating any movement of contaminants and any chance of settlement or buoyancy problem. In the interest of optimizing capacity and facilitating transportation, large tires should be cut or shredded before transportation to underground. Tires could be brought gradually to underground when mined sectors within permafrost are ready to be closed and backfilled. As per landfilling, placing tires underground will require extensive health and safety procedures, logistical planning, as well as strict waste placement procedures. It will also be important to plan availability of underground areas ready for backfill, in order to avoid large stockpiles of waste tires close to the portal.

This option will be incorporated into the Closure and Reclamation Plan and will be included in the next version of the Hazmat management plan.

### **2.3. Vehicle and machinery**

Unused or damaged vehicles and machinery are approved to be placed in the landfill as per the Meadowbank and Whale Tail Landfill Design and Management Plan. All hazardous material, electronics and other unapproved waste for the landfill must be removed from the vehicles or machinery before placement in the landfill, as per the list presented in Table 1. The decontamination procedure before landfilling will be planned and documented with Procedure A (Appendix B) by the mechanics and the planners.

Vehicles and machinery with salvageable value could also be sent south by sealift for resale or recycling. Procedure B (Appendix B) presents the steps to follow and document by the mechanics and planners to send equipment on the sealift.

### 3. References

Agnico Eagle Mines, Meadowbank Mine, Landfill Design and Management Plan, Version 6; March 2024

Agnico Eagle Mines, Whale Tail Mine, Landfill Design and Management Plan, Version 5; March 2024

Agnico Eagle Mines, Hazardous Materials Management Plan, Version 7, March 2022

Agnico Eagle Mines, Cyanide Management: Decommissioning Overview Version 2; September 2021

(Government of Canada, <https://ised-isde.canada.ca/site/office-consumer-affairs/en/be-green-consumer/e-waste>).

(<https://epra.ca/provincial-programs>)

<https://www.gov.nt.ca/ecc/en/services/waste-reduction-and-recycling/electronics-recycling-program>

Table 1 - Waste Type Acceptable and Unacceptable for Landfill with Alternative Waste Disposal Options

Waste Type	Acceptable in Landfill	Unacceptable in Landfill	Alternative Waste Disposal Options
1. General Dry Waste and Demolition Waste			
Plastic Including HDPE liner, HDPE pipes and insulation, PVC pipes	x		
Steel, copper, aluminum, iron	x		Recycling (sent south)
Wood	x		
Fiberglass and fiberglass insulation	x		
Roofing	x		
Cardboard and paper	x		
Concrete	x		
Carpet	x		
Bricks	x		
Ceramics	x		
Rubber	x		
Empty caulking tubes	x		
Hardened caulk	x		
Clothing	x		
Glass	x		
Wire	x		
Small appliances and tools (with batteries removed)	x		
Gyproc	x		
Ash (provided it has cooled to 60°C or less and follows procedures laid out in the Incinerator Management Plan)	x		
Expanded polystyrene		x	Waste press (disposal south)
2. Wet or Food Waste			
Organic matter Including food, septic tank pumping or sludge from wastewater treatment, dead animals, paper		x	Composter
Food containers and wrappings, unless cleaned		x	Waste press (disposal south)
Composter output	x		
3. Hazardous Material			
Hazardous waste: Mercury Mercury switches (found in ABS brakes) Medical waste Solvents Glues Ethylene glycol antifreeze Adhesives (except empty caulking tubes) Lead components (battery cable ends and connectors, wheel weights)		x	Disposal as per HAZMAT management procedures
Petroleum products and lubricants, other hazardous fluids: Diesel fuel, gasoline, Jet-A Oils, greases Anti-freeze Solvents used for equipment operation and maintenance Materials contaminated with petroleum products Windshield washer fluid DEF Hydraulic Fluid Brake Fluid Transmission Fluid Power Steering Fluid Differential Fluid		x	Disposal as per HAZMAT management procedures
Ozone depleting substances (ODS), including chlorofluorocarbons (CFCs) or halons: Refrigeration equipment (refrigerant) Air conditioning equipment and motor vehicle air conditioners (refrigerant) Fire extinguishing equipment		x	Disposal as per HAZMAT management procedures  As per Environmental Guideline for Ozone Depleting Substances (Government of Nunavut, 2011), CANADIAN ENVIRONMENTAL PROTECTION ACT, 1999 S.C. 1999, c. 33 (Ozone-Depleting Substances Regulations, 1998 SOR/99-7)
Process plant consumables: Sodium cyanide Caustic soda (sodium hydroxide) Sulphur prills Carbon sodium metabisulphite Nitric acid Calcine lime Flocculants Calcium chloride Borax Silica Lead nitrate Anti-scalants used in mineral extraction		x	Disposal as per HAZMAT management procedures
Water treatment chemicals Silica sand Flocculants polymers		x	Disposal as per HAZMAT management procedures
Explosives Emulsion, caps, and high explosives used for blasting in the mine		x	Disposal as per HAZMAT management procedures
Meadowbank Laboratory chemicals and wastes including various by-products classified as hazardous waste and chemicals such as nitric acid used in the assay laboratory		x	Generally very limited in quantity and will be handled only by specialist laboratory technicians
4. E-Waste			
Electronics: Batteries Computers (incl. keyboard, mouse, cables, speakers) Computer modules control in vehicle/equipment Laptops, Tablets Cell phones Printers, copiers, scanners Monitors Televisions Telecom devices Solar panels		x	Recycling (sent south)
Light bulbs and Fluorescent Lamp Tube		x	Recycling (sent south)
5. Vehicles and Machinery			
Vehicles and machinery Provided that all applicable elements from listed in 3. Hazardous Material and 4. E-Waste have been removed  Provided that Procedure A have been completed	x		Recycling or resale (sent south, provided that Procedure B have been completed)
6. Tires (Mobile and Heavy Equipment)			
Tires - cut in pieces or shredded	x		Disposal in underground Recycling (sent south)
Whole tires		x	Cut or shredded for disposal in landfill or underground

Notes:

- For material in contact with cyanide, decommissioning must follow ICMC procedures (Cyanide Management: Decommissioning Overview Version 2; September 2021).
- Disposal as per HAZMAT management procedures must refer to the Hazardous Materials Management Plan, Version 7, March 2022.
- Procedures A and B for vehicles and machinery are provided in Appendix C.
- Waste containing asbestos will be disposed of according to the MBK-HSS-IH-PRO Asbestos Waste Management procedure

## **Appendix A – Tires disposal plan for similar projects**



Mines	Review Board	Water Board	License Number	Waste Management Plan	FCRP	ICRP	Other Sources	Note
Arctic Canadian Diamond Co. Ekati Mine (fmr. Burgundy)		MVLWB – Wek'eezhii	W2022L2-0001	"Reuse equipment tires as barriers and blast mats." Disposed on site: "inert non-reactive landfill waste" (includes "rubber and rubber-coated products" that are not recycled).	None posted; Version 4 pending approval (V.3.1 rejected)	Landfill for disposal of all inert non-hazardous wastes. "Mobile Equipment" including tire-mounted equipment will be "cleaned and disposed of in a landfill, or possibly removed from site" if it has salvage value.	<a href="https://new.onlinereviewssystem.ca/review/F70FB2D1-0657-EE11-9937-002248AEC241">new.onlinereviewssystem.ca/review/F70FB2D1-0657-EE11-9937-002248AEC241</a>	Referenced "EKA PLA 2118 Solid Waste Landfill Management Plan" not found
Diavik Diamond Mines		MVLWB – Wek'eezhii	W2015L2-0001	Reuse tires as barricades; otherwise "disposed of in the inert landfill" (includes rubber from conveyor belts, tires, etc.)	Will dispose of inter material from machinery and equipment in the on-site landfill (WLWB 2013)."		Solid Waste and Landfill Management Plan: tires are defined as inert waste and are "disposed of in the landfill and eventually covered with large quantities of waste rock."	
De Beers Gahcho Kue Diamond Mine		MVLWB	MV2005L2-0015	Will "endeavor to recycle tires...where opportunities exist." Otherwise will "deposit in the landfill" (Waste Management Area, unlined) "or transport off-site for recycling ." Waste will be "crushed with a dozer" (lists tires among landfill waste to be crushed).	"Equipment with no salvageable value will be dismantled and buried in the inert materials landfill within the Mine Rick Piles."			
Goose Gold Mine, Sabina	NIRB	Nunavut Water Board				Used tires and machinery - Remove hazardous waste from equipment not being salvaged, clean and dispose of in active landfill or mine workings.	<a href="ftp://ftp.nwb-oen.ca/">ftp://ftp.nwb-oen.ca/</a>	
Nechalacho at Thor Lake, Avalon Advanced Materials Inc.		MVLWB	MV2010L2-0005 (Associated with MV2010D0017)	Used tires "will be consolidated and shipped off-site" for recycling. Tires listed under "recyclables."	Inert material "will be placed underground"; no landfill site is planned.			
De Beers Canada Inc., Snap Lake		MVLWB	MV2019L2-0004	Tires to be "Recycled" or "Reused" "where opportunities exist." Inert wastes, generally, will be deposited in the landfill. "Most of the inert waste will be processed and consolidated where the demolition is occurring to reduce the trucking volume."	"Non-hazardous materials will be disposed in the Mine's [demolition landfill in East Cell of the North Pile]" including "mobile equipment." Inert materials will be cut up into sections and smaller strips or otherwise demolished.			

Note: Completed by Stantec, August 2024.

## **Appendix B – Equipment Disposal Preparation Procedures**

PROCEDURE A

Unit Number:

Decommissioning to Landfill

Description: **MECHANIC PREPERATION**

Date:

“Safety First, Safety Last ... Safety Always!”

Performed by:

“No Repeats” – Our Stepping Stone to ZERO HARM

*This check list "is NOT a procedure". Each and every one has to comply with Mine Act and the rules & regulations of the Nunavut Government in terms of health and safety at work.*

Safety and PPEs

LEGEND

Compliant ✓

Non-Compliant X

Corrected O

Not Applicable / Use -

- ☐ Use the Work Card to assess and mitigate the risks
- ☐ Mandatory PPEs

AEM equipment removal

- ☐ Remove steel wheels and replace with original mags if wheels are required
- ☐ Remove sepura radios and antennas, wenco systems. and give back to the supervisor to give back to IT telecom
- ☐ Remove Plates and give to the supervisor
- ☐ Take the registrations out of the glove box and give to the supervisor
- ☐ Remove Fuel tag / key FOB and fuel puck and give to supervisor
- ☐ Remove strobes and any equipement hanging outside the main body of the machine ( shipping calculated on net dimensions )
- ☐ Remove fire extinguishers
- ☐ Remove any other equipments not factory from the vehicle and ask the supervisor where to put them

Fluid management and Contaminents

- ☐ Completely empty fuel system to ;

☐ Fuel cell ☐ Fuel Filters

☐ Fuel lines and distribution
- ☐ Remove Oil fluids From engine, Transmissions, components, lines and any other

☐ Drain as much as possible by following manufacturer recommended procedure

☐ After that, Use the fluid recovery vaccum to remove everything left behind in the draining process

☐ Cap EVERY open orifices, fill cap, dip tube, hose, cylinder etc with a leak proof plug to mitigate any possible remaining seepage

☐ All Oils ☐ Antifreeze ☐ Hydraulic Fluid ☐ DEF ☐ Windshield Washer ☐ Grease ☐ All other Fluids
- ☐ Remove contaminents following our HAZMAT compliance, see bellow options to be completed

☐ If the asset is to be dispatched on site, remove all bellow items according to the landfill management plan

☐ ECM, TCM, BCM computers

☐ Remove tires from wheels

☐ Remove lead components, Mercury switches

☐ Ozone depleting substances (empty A/C refrigerent)

☐ Petroleum products including materials contaminated by these products

☐ Remove battery and dispose as per hazmat compliance

☐ If the asset is to be dispatched on site, complete steps bellow

☐ Remove all waste material and dispose in accordance to landfill managemement plan

☐ Organic matter including food, paper, septic tank pumping or sludge from wastewater treatment

☐ Expanded polystyrene

☐ Food containers or wrappings

Vehicle deep cleaning before landfill

- ☐ Clean vehicle thoroughly removing grease, contaminents and anything left from the mechanical prep

Date:

Performed by:

"Safety First, Safety Last ... Safety Always!"

"No Repeats" – Our Stepping Stone to ZERO HARM

This check list "is NOT a procedure". Each and every one has to comply with Mine Act and the rules & regulations of the Nunavut Government in terms of health and safety at work.

### Safety and PPEs

LEGEND

Compliant ✓

Non-Compliant X

Corrected O

Not Applicable / Use -

☐ Use the Work Card to assess and mitigate the risks

☐ Mandatory PPEs

### To Complete

☐ Complete Mechanical preparation for landfill, above procedure is the MINIMAL requirement do not hesitate to go above the guidelines if you believe it is needed

☐ After pep and cleaning, take the photos and upload them to the WO, See "Equipment photos" section for detail and complete it

☐ Move the vehicle to the designated staging area

☐ Retrieve Key, Spare Keys, Disconnect Key if applicable and GIVE TO PLANNER/GS/SUPERVISOR ??

☐ Close WO to status 80

☐ Give the completed inspection sheet and this checklist to the planner on site

☐ Along side that inspection sheet please give attached planner tasks checksheet to planner on site

### Equipment photos

☐ Take photos of the equipment and upload them to the WO's Attachment, Photo ID, equipment number than a letter

Photo ID ex : 61PCK01A // 61PCK01B // 61LOA01A // 61LOA01B and so on.

☐ Front

☐ Driver side

☐ Engine

☐ wheels / Tracks

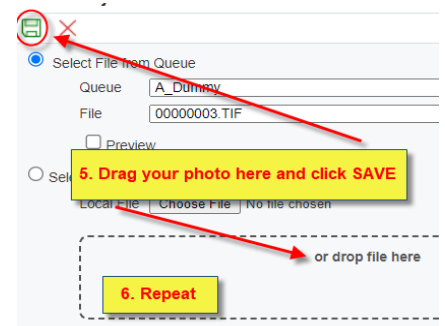
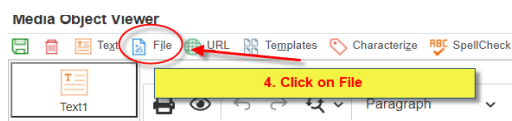
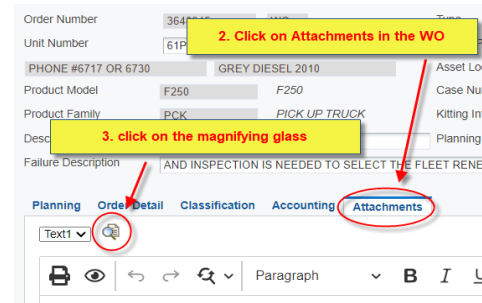
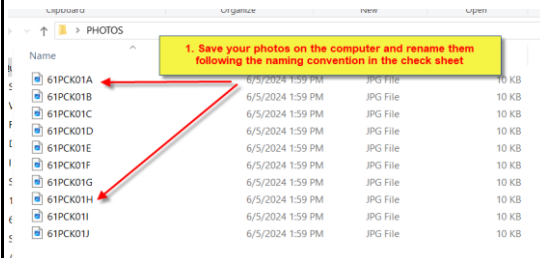
☐ Passenger side

☐ Tailgate

☐ Cab interior

☐ Operator console

☐ See below to upload photos



Unit Number:

## Decommissioning to Landfill

Description: **PLANNER TASKS**

Date:

*"Safety First, Safety Last ... Safety Always!"*

Performed by:

*"No Repeats" – Our Stepping Stone to ZERO HARM*

*This check list "is NOT a procedure". Each and every one has to comply with Mine Act and the rules & regulations of the Nunavut Government in terms of health and safety at work.*

### Safety and PPEs

LEGEND	Compliant	✓
	Non-Compliant	X
	Corrected	O
	Not Applicable / Use	-

☐

Use the Work Card to assess and mitigate the risks

☐

Mandatory PPEs

### To Complete

☐

Confirm all inspection documents are fully completed and signed, this is mandatory for legal agreements

☐

Verify that all requested photos are uploaded and properly named if not contact supervisor for that task to be completed

☐

Scan all copies of the inspections and rename them as followd, UNIT NUMBER DATE LANDFILL

ex : 61PCK01 2024-06-05 LANDFILL

☐

Upload the documents to the WO's attachement

☐

Notify Asset Management & Environment & Site service via email with the WO number that the inspection as been completed

Asset : <nunavut.asm.technicians@agnicoeagle.com>

Environment : meadowbank.environment@agnicoeagle.com

E&I : meadowbank.e&isupervisors@agnicoeagle.com

☐

Close the WO to status 95

☐

Complete the DDP requirements for equipment end of life cycle

PROCEDURE B

Unit Number:		Decommissioning for Sealift
Description:	MECHANIC PREPERATION	

Date:		“Safety First, Safety Last ... Safety Always!” “No Repeats” – Our Stepping Stone to ZERO HARM
Performed by:		

<i>This check list "is NOT a procedure". Each and every one has to comply with Mine Act and the rules &amp; regulations of the Nunavut Government in terms of health and safety at work.</i>		LEGEND Compliant ✓ Non-Compliant X Corrected O Not Applicable / Use -
Safety and PPEs		
<div><input type="checkbox"/> Use the Work Card to assess and mitigate the risks</div> <div><input type="checkbox"/> Mandatory PPEs</div>		

Vehicle cleaning and inspection
<div><input type="checkbox"/> Clean vehicle then complete the asset health inspection document (even if truck is to be scrapped)</div>

AEM equipment removal
<div><div><input type="checkbox"/> Remove steel wheels and replace with original mags if wheels are required (if applicable)</div><div><input type="checkbox"/> Remove sepura radios and antennas, wenco systems. and give back to the supervisor to give back to IT telecom</div><div><div><input type="checkbox"/> Remove Plates and give to the supervisor</div><div><input type="checkbox"/> Take the registrations out of the glove box and give to the supervisor</div></div><div><div><input type="checkbox"/> Remove Fuel tag / key FOB and fuel puck and give to supervisor</div><div><input type="checkbox"/> Remove all AEM branding from the vehicle</div></div><div><input type="checkbox"/> Use jde item 152986 and write the unit number on the driver side window and the windshield top right corner for easy identification</div><div><input type="checkbox"/> Remove strobes and any equipment hanging outside the main body of the machine ( shipping calculated on net dimensions )</div><div><input type="checkbox"/> Remove fire extinguishers</div><div><input type="checkbox"/> Remove any other equipements not factory from the vehicle and ask the supervisor where to put them</div></div>

Fluid management and Contaminents
<div><div><input type="checkbox"/> Fuel level 1/4 tank, any amount over needs to be drained from the tank and reused in other vehicles or waste oil furnaces</div><div><div><input type="checkbox"/> If the asset is going to be sent south on the barge, Zero leak policy applies, correct any leaks if needed</div><div><div><input type="checkbox"/> Remove all waste material and dispose in accordance to landfill managemement plan<div><div><input type="checkbox"/> Organic matter including food, paper, septic tank pumping or sludge from wastewater treatment</div><div><input type="checkbox"/> Expanded polystyrene</div><div><input type="checkbox"/> Food containers or wrappings</div></div></div></div></div></div>

<b>Date:</b>		<b>"Safety First, Safety Last ... Safety Always!"</b> <b>"No Repeats" – Our Stepping Stone to ZERO HARM</b>
<b>Performed by:</b>		

This check list "is NOT a procedure". Each and every one has to comply with Mine Act and the rules & regulations of the Nunavut Government in terms of health and safety at work.

### Safety and PPEs

- ☐ Use the Work Card to assess and mitigate the risks
- ☐ Mandatory PPEs

LEGEND	Compliant	✓
	Non-Compliant	X
	Corrected	O
	Not Applicable / Use	-

### To Complete

- ☐ Complete Decommissioning above procedure is the MINIMAL requirement do not hesitate to go above the guidelines if you believe it is needed
- ☐ After pep and cleaning, take the photos and upload them to the WO, See "Equipment photos" section for detail and complete it
- ☐ Move the vehicle to the designated staging area
- ☐ Retrieve Key, Spare Keys, Disconnect Key if applicable and give to supervisor
- ☐ Close WO to status 80
- ☐ Give the completed inspection sheet and this checklist to the planner on site
- ☐ Along side that inspection sheet please give attached planner tasks checksheet to planner on site

### Equipment photos

- ☐ Take photos of the equipment and upload them to the WO's Attachment, Photo ID, equipment number than a letter

Photo ID ex : 61PCK01A // 61PCK01B // 61LOA01A // 61LOA01B and so on.

- ☐ Front
- ☐ Driver side
- ☐ Engine
- ☐ wheels / Tracks
- ☐ Passenger side
- ☐ Tailgate
- ☐ Cab interior
- ☐ Operator console

- ☐ See below to upload photos

Unit Number:

Description:

## Decommissioning for Sealift

Date:

Performed by:

*"Safety First, Safety Last ... Safety Always!"*

*"No Repeats" – Our Stepping Stone to ZERO HARM*

*This check list "is NOT a procedure". Each and every one has to comply with Mine Act and the rules & regulations of the Nunavut Government in terms of health and safety at work.*

### Safety and PPEs

LEGEND

Compliant ✓

Non-Compliant X

Corrected O

Not Applicable / Use -

☐

Use the Work Card to assess and mitigate the risks

☐

Mandatory PPEs

### To Complete

☐

Confirm all inspection documents are fully completed and signed, this is mandatory for legal agreements

☐

Verify that all requested photos are uploaded and properly named if not contact supervisor for that task to be completed

☐

Scan all copies of the inspections and rename them as followd, UNIT NUMBER DATE DECOMMISSIONING

ex : 61PCK01 2024-06-05 DECOMMISSIONING

☐

Upload the documents to the WO's attachement

☐

Create a shipping request for the equipment and attach it to the WO

☐

Notify Asset Management & Warehouse coordinators via email with the WO number for decommissioning and the shipping request

Asset : <nunavut.asm.technicians@agnicoeagle.com>

Warehouse coordinators : mbk.warehousecoordinator@agnicoeagle.com

☐

Close the WO to status 95

☐

Complete the DDP requirements for equipment end of life cycle