



# **AGNICO EAGLE**

**Meliadine Gold Mine**

## **ARD-ML Sampling and Testing Plan**

---

**JUNE 2026  
VERSION 2**



---

## EXECUTIVE SUMMARY

---

As part of ongoing mining permitted at the Meliadine Gold Mine, it is estimated that approximately 2.4 million tonnes (Mt) of ore will be produced at the Discovery deposit, anticipated to start in 2031. It is expected that the associated overburden and waste rock generated will be 2.5 Mt and 35.4 Mt, respectively.

Consistent with the 2014 FEIS, the results of the Geochemical Characterization (Lorax 2022) indicate that approximately 62% of Discovery waste rock is classified as PAG or Uncertain and only 5% of the total waste rock outside of Discovery is expected to be classified as PAG or Uncertain.

This Acid Rock Drainage and Metal Leaching (ARD-ML) Management Plan has been prepared to address Term and Condition 23 of the Project Certificate No.006:

*“Prior to the commencement of excavation at the Discovery deposit, the Proponent, in consultation with Natural Resources Canada, shall update its Mine Waste Management Plan to assess the potential for acid rock drainage and to identify any monitoring and mitigation measures that may be required in this development area”.*

The objectives of the ARD-ML Management Plan are to define the sampling frequency, testing procedures, and analysis that are to be implemented to define the ARD and ML potential of waste rock for the Discovery deposit. This characterization is to be used by mine staff during the operations phase to ensure that waste rock generated at the Discovery deposit is managed in an appropriate manner.

## DOCUMENT CONTROL

Version	Date	Section	Page	Revision	Author
1_NWB	January 2024			First version of the Plan, prepared in support of the Meliadine Mine Water Licence Amendment	Agnico Eagle Mines Permitting Department
2	June 2026	Executive summaries	i-ii	Minor revisions to support 2026 Operational Update – Water Licence Amendment, which includes updates to reflect mine waste quantities and mining years throughout plan	Agnico Eagle Mines Permitting Department
		Section 1	1		
		Section 2.1	3		
		Table 2.1	3		
		Table 2.2	4		
Section 3.2.2	11	Provided clarity on sampling frequency and counts			



4.1	Plan Review .....	12
4.2	Performance Monitoring .....	12
4.2.1	Water Quality Monitoring .....	12
4.2.2	Permafrost Development .....	12
<b>Section 5 • REFERENCES.....</b>		<b>13</b>

## LIST OF TABLES

Table 2.1:	Summary of Meliadine Mine Waste Production (Agnico Eagle 2026) .....	3
Table 2.2:	Summary of Mine Waste Tonnage and Destination .....	4
Table 2.3:	Proportions of Waste Rock by Lithology at Discovery (Lorax 2022) .....	4
Table 2.4:	Anticipated ARD/ML Potential of Waste Rock Types at Discovery (Lorax 2022) .....	5
Table 3.1:	Recommended Sampling Frequency by Rock Type.....	9
Table 3.2:	Summary of ARD Guidelines used to classify Discovery Waste Rock.....	10

## LIST OF FIGURES

Figure 1-1:	Discovery Deposit .....	2
-------------	-------------------------	---

---

**ACRONYMS**


---

ABA	Acid-Base Accounting
Agnico Eagle	Agnico Eagle Mines Limited
ARD	Acid Rock Drainage
HCT	Humidity Cell Test
LOM	Life of Mine
MDMER	Metal and Diamond Mining Effluent Regulations
MEND	Mine Environment Neutral Drainage
MPA	Maximum Potential Acidity
ML	Metal (and arsenic) Leaching
NML	Not Metal Leaching and Low Arsenic Leaching
NIRB	Nunavut Impact Review Board
NWB	Nunavut Water Board
NP	Neutralization Potential
NPR	Net Potential Ratio
Non-PAG	Non-Potentially Acid Generating
PAG	Potentially Acid Generating
QA/QC	Quality Assurance / Quality Control
SFE	Shake Flask Extraction
TDS	Total Dissolved Solids
TIC	Total Inorganic Carbon
WRSF	Waste Rock Storage Facility

---

**UNITS**


---

%	Percent
kg	kilogram(s)
km	kilometer(s)
km <sup>2</sup>	square kilometer(s)
mg/kg	milligram per kilogram
Mt	million tonne(s)
ppm	parts per million
t	tonne(s)
µg/g	micrograms per gram
wt%	weight percent

---

**SECTION 1 • INTRODUCTION**

---

Agnico Eagle Mines Limited (Agnico Eagle) is operating the Meliadine Gold Mine (Meliadine Mine), located approximately 25 km north of Rankin Inlet, and 80 km southwest of Chesterfield Inlet in the Kivalliq Region of Nunavut.

As part of ongoing mining permitted at Meliadine Mine, it is estimated that approximately 2.4 million tonnes (Mt) of ore will be produced at the Discovery deposit, anticipated to start in 2031. It is expected that approximately 2.5 Mt of overburden and 35.4 Mt of waste rock will be generated by open pit mining activities for the deposit. The location of the deposit is presented in Figure 1.1.

Consistent with the 2014 FEIS, the results of the Geochemical Characterization (Lorax 2022) completed for Meliadine Mine indicate that the Discovery deposit is the only deposit where most ore is classified as Potentially Acid Generating (PAG) or Uncertain. More specifically, results indicate that approximately 62% of Discovery waste rock is classified as PAG or Uncertain whereas only 5% of the total waste rock outside of Discovery is expected to be classified as PAG or Uncertain. The distinct Acid Rock Drainage (ARD) potential at Discovery is due to lower carbonate content in all three major waste rock lithologies found at Discovery, compared to other deposits. The lower carbonate content reduces the amount of Neutralizing Potential (NP) available to neutralize the Acid Potential (AP) associated with the sulphide minerals found in these lithologies.

This Acid Rock Drainage and Metal Leaching (ARD-ML) Management Plan has been prepared to address Term and Condition 23 of the Project Certificate No.006:

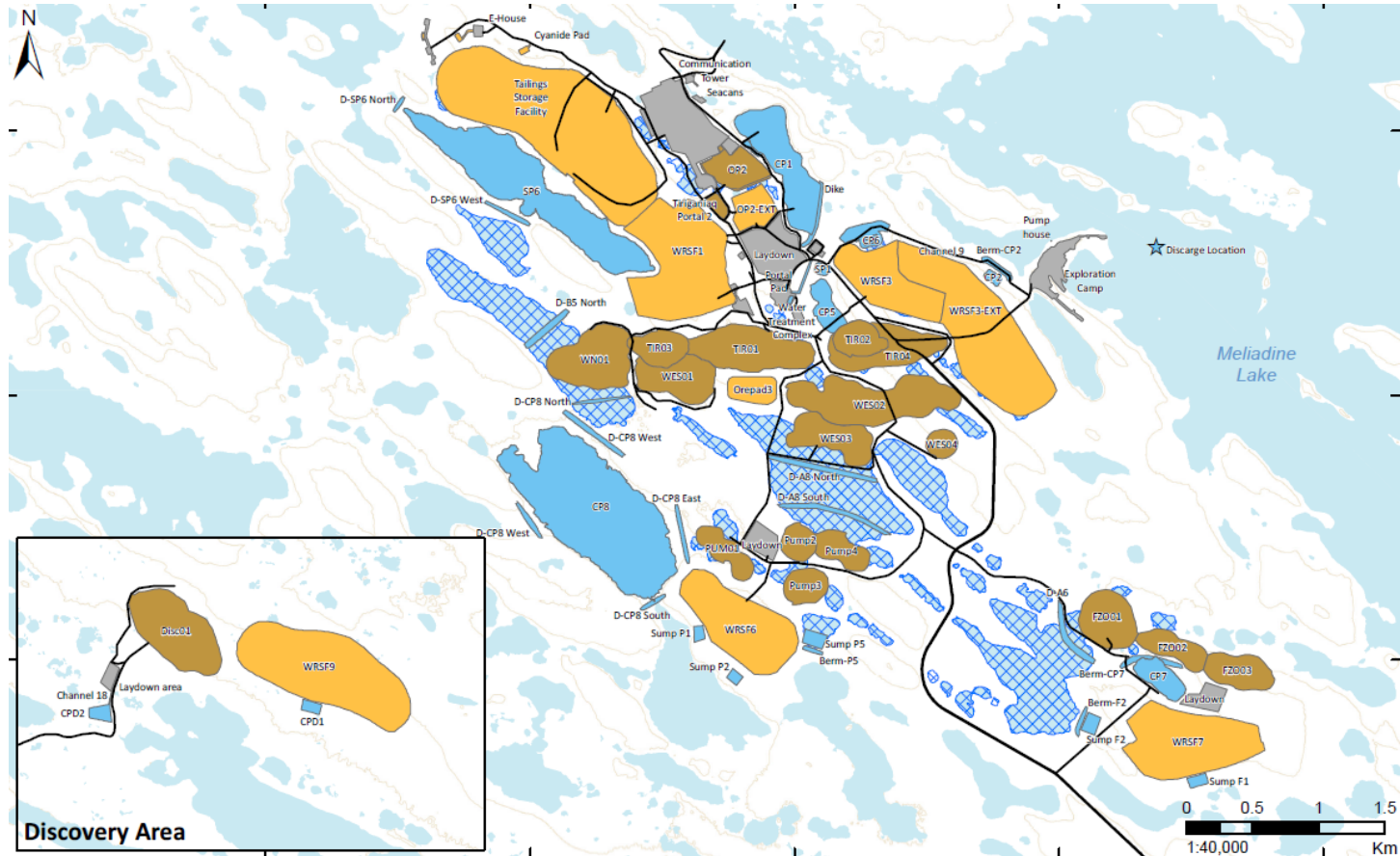
*“Prior to the commencement of excavation at the Discovery deposit, the Proponent, in consultation with Natural Resources Canada, shall update its Mine Waste Management Plan to assess the potential for acid rock drainage and to identify any monitoring and mitigation measures that may be required in this development area”.*

The objectives of the ARD-ML Management Plan are to define the sampling frequency, testing procedures and analysis that are to be implemented to define the ARD and ML potential of waste rock for the Discovery deposit. This characterization is to be used by mine staff during the operations phase to ensure that waste rock generated at the Discovery deposit is managed in an appropriate manner.

The ARD potential associated with Discovery waste rock will be mitigated through the progressive construction of a thermal cover over the Discovery Waste Rock Storage Facility (WRSF 9) using non-PAG mine rock.

Geochemical characterization of overburden for the 2014 FEIS, showed the material to be non-acid generating and to contain low metal concentrations relative to other mine rock. Furthermore, Shake Flask Extraction (SFE) leachate concentrations for all overburden samples met the mine effluent criteria (Metal and Diamond Mining Effluent Regulations [MDMER]). As such, waste rock and overburden have compatible geochemical characteristics such that they could be managed together in the same facility.

Figure 1-1: Discovery Deposit



Meliadine Mine Water Licence Amendment  
General Site Plan



Date: 2024-01-19  
Map Number: MEL-112  
Coordinate System: NAD 1983 UTM Zone 15N  
Projection: Transverse Mercator  
Datum: North American 1983

- Facilities
- Mining
- Storage
- Water Management
- Dewatered Lake
- Roads



## SECTION 2 • WASTE ROCK MANAGEMENT

### 2.1 Discovery Open Pit Mine Waste Quantities

The Discovery deposit will be developed using traditional open-pit mining methods. The initial construction phase for the Discovery deposit is planned to commence in 2031 upon reception of permits and approvals. End of operations is planned for 2036 however, Agnico Eagle will continue exploration activities with the objective to extend mine life beyond 2036. The overall waste production by deposit for the Meliadine Mine Water License Amendment is presented in Table 2.1.

**Table 2.1: Summary of Meliadine Mine Waste Production (Agnico Eagle 2026)**

Deposit (Year 2019-2036)	Overburden (Mt)	Waste Rock from Open Pit (Mt)	Waste Rock from Underground (Mt)
Tiriganiaq	11.7	47.4	11.7
Wesmeg <sup>1</sup>	12.0	58.2	
Pump	3.6	6.9	2.8
F Zone	5.0	18.5	
Discovery	2.5	35.4	
<b>Total</b>	<b>34.8</b>	<b>166.4</b>	<b>14.5</b>

<sup>1</sup> Includes Wesmeg North

#### 2.1.1 Discovery Mine Waste Designation and Destination

As part of ongoing mining permitted at the Meliadine Mine, it is estimated that approximately 2.4 Mt of ore will be produced at Discovery, anticipated to start in 2031. It is expected that approximately 2.5 Mt of overburden and 35.4 Mt of waste rock will be generated by the Discovery open pit mining activities. Overall, approximately 62% of Discovery waste rock is classified as PAG or Uncertain. Conversely, only 5% of the total waste rock outside of Discovery is expected to be classified as PAG or Uncertain.

The ARD potential associated with Discovery open pit waste rock will be mitigated through the progressive construction of a thermal cover using non-PAG mine rock, as defined by OKC (2022) to cover the WRSF of this deposit.

The overall usage or destination of the waste materials for the Meliadine Mine Water License Amendment is presented in Table 2.2 for reference. It is anticipated that approximately 7.6 Mt of non-PAG waste rock will be required for the construction of the Discovery WRSF thermal cover.

**Table 2.2: Summary of Mine Waste Tonnage and Destination**

Mine Waste Stream	Estimated Quantities		Waste Destination
Overburden	35 Mt		Temporary stockpile of Overburden or other suitable material ~0.1 Mt for reclamation of TSF
			Closure and site reclamation for the TSF
Waste Rock	183 Mt		Co-disposed with waste rock within WRSFs
			Infrastructure construction (surface and underground)
			WRSFs
			Closure and site reclamation for the TSF
Tailings	45 Mt	37 Mt	As dry stack tailings placed in the TSF
		7 Mt	Used in underground mine as cemented paste backfill

## 2.2 Lithologies at Discovery

There are three major lithologies are found at Discovery: Gabbro, Iron Formation, and Sedimentary (SE). Table 2.3 presents the tonnage of waste rock by lithology to be produced at Discovery open pit and stored in the Discovery WRSF as per the Meliadine Mine Water License Amendment Mine Plan. The Discovery open pit is anticipated to be mined between 2031 and 2036.

**Table 2.3: Proportions of Waste Rock by Lithology at Discovery (Lorax 2022)**

Lithology	Waste Rock Tonnages
Gabbro	3,926,198
Iron Formation	5,399,090
Sedimentary	27,218,436
<b>Total</b>	<b>36,543,725</b>

### 2.2.1 Anticipated ARD/ML Potential by Material Types at Discovery

Most waste rock that will be excavated at Meliadine Mine is classified as non-PAG outside of the Discovery deposit. The distinct ARD potential at Discovery is due to lower carbonate mineralization compared to other deposits, reducing the amount of NP available to neutralize AP associated with sulphide minerals.

Due to the relatively low carbonate content, material classified as PAG or Uncertain are found in all three major waste rock lithologies at Discovery. The Iron Formation lithology is the primary host of gold mineralization and comprises only a minor percentage of waste rock in the other deposits.

The ARD potential of each lithology at Discovery was evaluated through a supplemental static and kinetic testing program conducted in support of the Meliadine Mine Water Licence Amendment, additionally to the geochemical characterization data from the 2014 FEIS (Lorax 2022). The anticipated

ARD/ML potentials for each lithology at Discovery are shown in Table 2.4. Details on the test methods used and results are provided in the Geochemical Characterization Report (Lorax 2022).

**Table 2.4: Anticipated ARD/ML Potential of Waste Rock Types at Discovery (Lorax 2022)**

Discovery Lithology	Material Type	ARD Designation	ARD Classification
			%
Gabbro	Waste Rock	Non-PAG	57%
		Uncertain	43%
		PAG	0%
Iron Formation	Waste Rock	Non-PAG	39%
		Uncertain	23%
		PAG	38%
	Ore	Non-PAG	0%
		Uncertain	5%
		PAG	95%
Sedimentary	Waste Rock	Non-PAG	28%
		Uncertain	59%
		PAG	13%
	Ore	Non-PAG	0%
		Uncertain	100%
		PAG	0%

## 2.2.2 Discovery Ore and Waste Rock Metal Leaching Potential

### ***Ore***

The metal leaching potential of ore was assessed through laboratory SFE tests and a field seepage survey. Ore samples generally showed higher SFE concentrations compared to waste rock, particularly for Arsenic and Selenium. Overall, the result indicates that ore will have greater metal leaching potential compared to waste rock, and underground ore stockpiles will have elevated metal leaching potential compared to the equivalent lithologies excavated from other open pits.

All ore will be processed through the mill before the end of mine life, eliminating the long-term metal leaching and ARD potential associated with this material type. Characterization of ARD potential for ore materials corresponds with the findings of the 2014 FEIS regarding the designation of Discovery ore primarily as PAG. Results from laboratory tests and the seep survey completed in 2020 demonstrates that ore presents greater metal leaching potential than waste rock materials.

### ***Waste Rock***

The waste rock metal leaching potential was assessed through a variety of laboratory tests and through a seep survey completed in support of Meliadine Mine Water License Amendment (Lorax 2022). Both laboratory kinetic tests and the seep survey confirmed that Arsenic was the only

parameter to exceed MDMER guidelines in waste rock seepages. Kinetic tests and SFEs results showed that Siltstone and Sedimentary lithologies generally produced the highest Arsenic concentrations, while lower concentrations were generally observed in Iron Formation waste rock.

The survey results also indicated distinct metal leaching potential of underground versus open pit mine rock; that is, underground mine rock tended to show greater concentrations of metal cations (Cobalt, Copper, Nickel, and Zinc), while open pit mine rock tended to have higher Arsenic and Antimony concentrations. Overall, the result indicate that underground waste rock will have elevated metal leaching potential compared to the equivalent lithologies excavated from other open pits.

The waste rock tonnages shown in Table 2.1 and the ARD classification of various lithologies at Discovery is combined to estimate the relative tonnage of non-PAG versus PAG and Uncertain waste rock. The results show that approximately 62% of Discovery waste rock is expected to be classified as PAG or Uncertain. The ARD potential associated with Discovery open pit waste rock will be mitigated through the progressive construction of a 6 m Non-PAG/Non-ML thermal waste rock cover system to limit interaction of precipitation with PAG/ML (Okane 2022).

The Non-PAG waste rock tonnage required for the construction of a 6 m thermal cover of the Discovery WRSF is approximately 7.6 Mt (Agnico Eagle 2020).

### 2.3 Waste Material Segregation

Waste material segregation will be conducted at Discovery, under the following guiding principles:

- **Overburden and PAG Waste Rock Disposal** – Waste rock and overburden generated from open pits activities at Discovery will be placed within the Discovery WRSF for permanent storage.
- **General Construction and/or Closure** – Only waste rock that is Non-PAG and Non-ML will be used for the construction of the Discovery WRSF thermal cover. All waste rock being used for construction or reserved for future use during closure needs to be characterized and verified as being Non-PAG and Non-ML.

Further details on waste rock management can be found in the Meliadine Gold Mine – Mine Waste Management Plan.

#### 2.3.2 Discovery Rock Storage Facility Design

The Discovery WRSF will be designed to minimize the potential for ARD and ML. The Discovery WRSF will be constructed to encapsulate the PAG ML waste rock inside a of non-PAG waste rock thermal cover. The non-PAG waste rock thermal cover will be placed on the top and sides of the Discovery WRSF to host the thawed layer and prevent liquids from contacting the centre of the pile that contains PAG and ML waste rock. Presently, thermal and seepage analysis of Discovery WRSF anticipate that 6 metres of thermal cover would maintain freezing conditions in WRSF in the long-term.

Permafrost under the Discovery WRSF will prevent contaminants from being transported away from the core of the WRSF in the long-term. Monitoring will be conducted to measure temperatures throughout the Discovery WRSF, and to measure the depth of the annual surface thaw. This information will be used to confirm the thickness of rock cover required to progressively reclaim the Discovery WRSF. Further details on the Discovery WRSF design can be found in the Meliadine Gold Mine - Mine Waste Management Plan.

---

**SECTION 3 • ASSESSMENT OF ARD/ML POTENTIAL OF WASTE ROCK AT MELIADINE MINE**

---

Sampling and testing of Discovery waste rock for ARD characterization will be conducted during mine operation to segregate suitable waste for use in construction and for closure. This section discusses field sampling methods, analytical testing, ARD/ML evaluation criteria, and the delineation of waste rock from Discovery.

In accordance with Type A Water Licence 2AM-MEL1631 Schedule B, Item 9 of the Meliadine Mine, Geochemical monitoring include:

- a. Operational acid/base accounting and paste pH test work used for waste rock designation (PAG and NPAG rock);
- b. As-built volumes of waste rock used in construction and sent to the Waste Rock Storage Facilities with estimated balance of acid generation to acid neutralization capacity in each sample as well as metal toxicity;
- c. All monitoring data with respect to geochemical analyses on site and related to roads, quarries, and the All-Weather Access Road;
- d. Leaching observations and tests on pit slope and dike exposure;
- e. Any geochemical outcomes or observations that could imply or lead to environmental impact;
- f. Geochemical data associated with tailings solids, tailings supernatant, cyanide leach residue, and bleed from the cyanide destruction process including an interpretation of the data;

According to Item 11 of the Water Licence 2AM-MEL1631, the monitoring should also include summary of quantities and analysis of seepage and runoff monitoring from the WRSF.

### **3.1 Field Sampling**

Drill holes will be sampled for testing as part of the ARD/ML evaluation (Section 3.2). Sampling will proceed according to the following guidelines that are authorized for the Meliadine Mine:

- To be sampled in accordance with the frequency set out in writing by the Geology Superintendent. The default sampling frequency is every fourth drill hole in each drill hole pattern, however the Geology Superintendent may vary this frequency.
- Drill holes will be spaced to aim for even distribution of samples throughout the planned blast area.
- Drill cuttings are collected and fully mixed in a stainless-steel sampling tray placed beside the drill.
- The contents of the stainless-steel sampling tray are poured into a polyethylene plastic bag.
- Material is transferred from the bags to a pan which goes into the dryers at the assay lab.
- Dried cuttings are crushed to 85% passing 10 mesh (2mm).
- Crushed cuttings are then split through a rotating sample splitter (that is where the homogenization of the raw sample occurs) down to 500-800g.

- Each sample will be collected from drill cuttings and should weigh no less than 1 kilogram (kg).
- The samples will be labeled using a convention that is readily traceable back to the production drill hole numbers.

The Geology Superintendent may vary the default frequency based on his knowledge from previous drilling, from database information and/or from visual inspections depending on where the drill pattern is situated, and which rock type is encountered.

The sampling frequency will be reviewed periodically as deemed necessary by Agnico Eagle, and a reduced sampling frequency may be implemented. The recommended sampling frequency by rock type at Discovery are presented in Table 3.1.

**Table 3.1: Recommended Sampling Frequency by Rock Type**

Meliadine Mine Water License Amendment Lithology Name	Meliadine Mine Water License Amendment Lithology Codes	Other Lithology Codes	Sampling Frequency
Gabbro	GB	MG	Every 4 <sup>th</sup> hole
Iron Formation	IF	KSC-LJ, LL, LLM, NLJ	Every 4 <sup>th</sup> hole
Sedimentary	SE	K, KWA-S	Every 4 <sup>th</sup> hole

### 3.2 Assessment of ARD/ML Potential

The ARD and ML potential of all samples collected (Section 3.1) will be evaluated through laboratory testing, as described below.

#### 3.2.1 ARD Testing and Classification of ARD Potential (PAG / Non-PAG)

The ARD potential of waste rock is traditionally characterized through acid-base accounting (ABA) analyses. ABA analysis involves a suite of analytical tests that include paste pH, total sulphur, sulfate sulphur, neutralization potential, and carbonate neutralization potential based on total inorganic carbon. The potential for ARD from waste rock is estimated based on the Neutralizing Potential (NP) provided by carbonate (NP-Ca) and the Acid Potential (AP) based on total sulphur. Then the NP/AP ratio, or net potential ratio (NPR) is calculated used to define the acid generating potential of the waste rock.

#### **Neutralization Potential (NP)**

NP is expected to be primarily provided by calcite and dolomite, with some ankerite (Lorax 2022). As a result, carbonate analysis alone would likely be appropriate for determining NP, although both methods were used (i.e., titration and direct carbonate analysis). Carbonate mineralogy at Discovery showed that calcite dominated the carbonate mineral assemblage in all waste rock lithologies encountered (gabbro, iron formation and sedimentary). Waste rock samples from Discovery show lower sulphide and carbonate mineral content for the Iron Formation and Sedimentary lithologies relative to the other deposits.

**Acid Potential (AP)**

In Discovery, gold mineralization is predominantly hosted in the northernmost ‘upper oxide’ iron formation, located parallel to the trend of the Pyke fault, within southeast-northwest trending stratigraphy. Gold mineralization is structurally controlled within folds and shear zones and is associated with quartz veining, silica flooding and sulphidization of magnetite by pyrrhotite and/or arsenopyrite (Lorax 2022).

The 2021 geochemical characterization results indicate that the sulphide minerals pyrrhotite, pyrite and arsenopyrite were identified by XRD in Meliadine waste rock. Each mineral phase will generate different amounts of acidity when oxidized. Pyrrhotite was found to be dominant in samples from the IF and SE units. As a result, the main consideration for AP is the presence of sulphide minerals at Discovery.

**ARD Assessment**

The potential for ARD was assessed using NP-Ca/AP ratios (or NPR). AP was calculated from total sulphur. Ratios below 2 were used to indicate potential for ARD (PAG or potentially ARD generating), whereas ratios above 2 indicate low potential for ARD (NPAG). The ARD Guidelines used to classify Discovery Waste Rock are presented in Table 3.2.

**Table 3.2: Summary of ARD Guidelines used to classify Discovery Waste Rock**

Initial Screening Criteria	ARD Potential
NPR < 1	Likely Acid Generating (PAG)
1 < NPR < 2	Uncertain
2 < NPR	Acid Consuming Non-Potentially Acid Generating (Non-PAG)

Source: Meliadine Mine 2022 Annual Report and Lorax 2022

**3.2.2 Assessment of Metal Leaching Potential**

Waste rock materials can also potentially leach metals and other elements when they come into contact with water and air, which is referred to as ML potential and can occur even if the materials are non-PAG. Arsenic is identified as a parameter of environmental interest based on laboratory leaching tests completed to date (Lorax 2022).

Standard laboratory techniques for analysis of ML potential at Discovery will include SFE and humidity cell tests (HCT). Both tests involve exposing the samples to water and measuring the metal content of the water after a prescribed period of contact time. The turn-around time for analytical results is too long for either of these tests to be used as a decision-making tool on a day-to-day basis as required during mine operations. Consequently, it is not feasible to segregate waste materials based on measured ML potentials derived from leaching tests.

As a result, ML potential would be determined through development of a predictive relationship between humidity cell leachate results, SFE leachate results and total metals concentrations in rock samples. Analyses for total metals would then occur onsite, and ML potential would be classified using the previously established relationship. However, a reliable model could not be developed. The ML potential will be confirmed through quarterly analyses of SFE leachate on a minimum of 75 samples sent to an external accredited laboratory. This includes 25 samples each of rock type at Discovery. Sampling frequency and sample counts may be reviewed periodically and adjusted as appropriate based on results and/or operational experience.

v2

A surface runoff water monitoring program will allow for detection of ML in the Discovery WRSF and sumps (refer to the proposed monitoring stations for Meliadine Gold Mine Water License Amendment in the Water Quality and Flow Monitoring Plan).

### 3.2.3 Quality Assurance / Quality Control (QA/QC)

Mined rock samples from Discovery will be subjected to the Meliadine Gold Mine Quality Assurance / Quality Control Plan which includes:

- Use of certified reference materials to verify precision of analytical methods used
- Quarterly analysis of duplicate samples by an accredited external lab for full ABA to verify the onsite lab's accuracy with these determinations and confirm correlations.
- The frequency of the analyses will be evaluated and altered as necessary as the database increases. A geostatistical approach will be considered to establish the number of QA/QC samples required by rock type at Discovery and to achieve statistical confidence.

The QA/QC analysis will be conducted by the Geology Department, and results will be reported to the Geology and Environment Superintendents. Data will be made available for the annual report.

### 3.3 Waste Rock Characterization

Following laboratory analysis, geology staff will classify waste rock as non-PAG if the NPR value is equal or greater than 2 and PAG if the NPR value is less than 2 (Table 3.2). These criteria can be re-evaluated when judged relevant by the Geology Superintendent in consultation with the mine engineer, as additional test data become available. ARD classifications of all samples will be logged in a database and will be available as required for annual reports or upon request.

Both waste types 1) NPAG/NML and 2) PAG/NML-ML and NPAG/ML will be assigned a unique identification number and tracked in WENCO to their final location.

---

**SECTION 4 • PLAN REVIEW, PERFORMANCE MONITORING & REPORTING**

---

**4.1 Plan Review**

The Mine Geology Superintendent will be responsible for implementing the Meliadine Gold Mine ARD-ML Sampling and Testing Plan. The Plan will be reviewed as required by the Geology Superintendent and updated if necessary to reflect any adaptive changes made in the operational and testing procedures. The changes should be made in consultation with the mine engineer, environmental superintendent, and chief assayer. Revised versions should be sent according to the Distribution List.

**4.2 Performance Monitoring**

The ARD-ML Sampling and Testing Plan will be the primary tool to ensure that all waste rock generated at Discovery is appropriately characterized and managed to prevent the future release of contaminants into the receiving environment.

In addition to the analytical QA/QC procedures outlined in Section 3.0, performance monitoring activities will include those activities outlined below.

**4.2.1 Water Quality Monitoring**

The Discovery WRSF and infrastructure contact water quality will be sampled and monitored by the Agnico Eagle in accordance with the Type A Water Licence. The details of this monitoring program are described in the Meliadine Gold Mine Water Quality and Flow Management Plan. The data from this monitoring is to be provided to the NWB through annual reporting, as per the Type A Water Licence.

**4.2.2 Permafrost Development**

Thermistors will be installed within the WRSF9 to determine if permafrost formation is observed. Thermal monitoring results are provided in Agnico Eagle's annual report submitted to the NWB. More information regarding the thermal monitoring plan is provided in the Meliadine Gold Mine Waste Management Plan. Thermal monitoring results are provided in Agnico Eagle's annual report submitted to the NWB.

---

**SECTION 5 • REFERENCES**

---

Agnico Eagle (Agnico Eagle Mines Limited). 2014. Geochemical Characterization of Mine Wastes at Meliadine Gold Project – 2014 FEIS SD6-3. Prepared by Golder Associates for Agnico Eagle Mines Ltd.

Agnico Eagle. 2020. 2020 Annual Report, Meliadine Gold Submitted to Nunavut Water Board. April 2021.

Agnico Eagle. 2026. Meliadine Gold Mine – Mine Waste Management Plan. June 2026.

Lorax (Lorax Environmental Services). 2022. Meliadine Extension: Geochemical Characterization Report. Prepared for Agnico Eagle Mines Ltd., by Lorax Environmental Services, February 2022.

MEND (Mine Environment Neutral Drainage), 2009. Prediction Manual for Drainage Chemistry from Sulphidic Geologic Materials. MEND Report 1.20.1. Mining Environment Neutral Drainage Program, Natural Resources Canada. December 2009.

NIRB (Nunavut Impact Review Board). 2015. NIRB Project Certificate [No. 006]. February 26, 2015.

NWB (Nunavut Water Board). 2021. Water Licence No: 2AM-MEL1631, Meliadine Gold Mine, May 13, 2021.

OKC (Okane Consultants Inc). 2022. Thermal Modelling of Discovery WRSF, version 3. Prepared for Agnico Eagle Mines Ltd. By Okane Consultants Inc., February 2022.