

MELIADINE PROJECT

WATER LICENCE AMENDMENT

NOVEMBER 30, 2020



AGNICO EAGLE

AGENDA



- Introduction
- Review Project Description:
 - CP1 water management and Meliadine Lake discharge criteria;
 - Increase annual freshwater consumption;
 - Updated waste management strategy;
 - Additional laydown area;
 - Construction of site access road;
 - Updated Interim Closure and Reclamation Plan; and,
 - Consultation.
- Overview of the Information Requests
- Overview of the Technical Comments

INTRODUCTION



PROJECT COMPONENTS

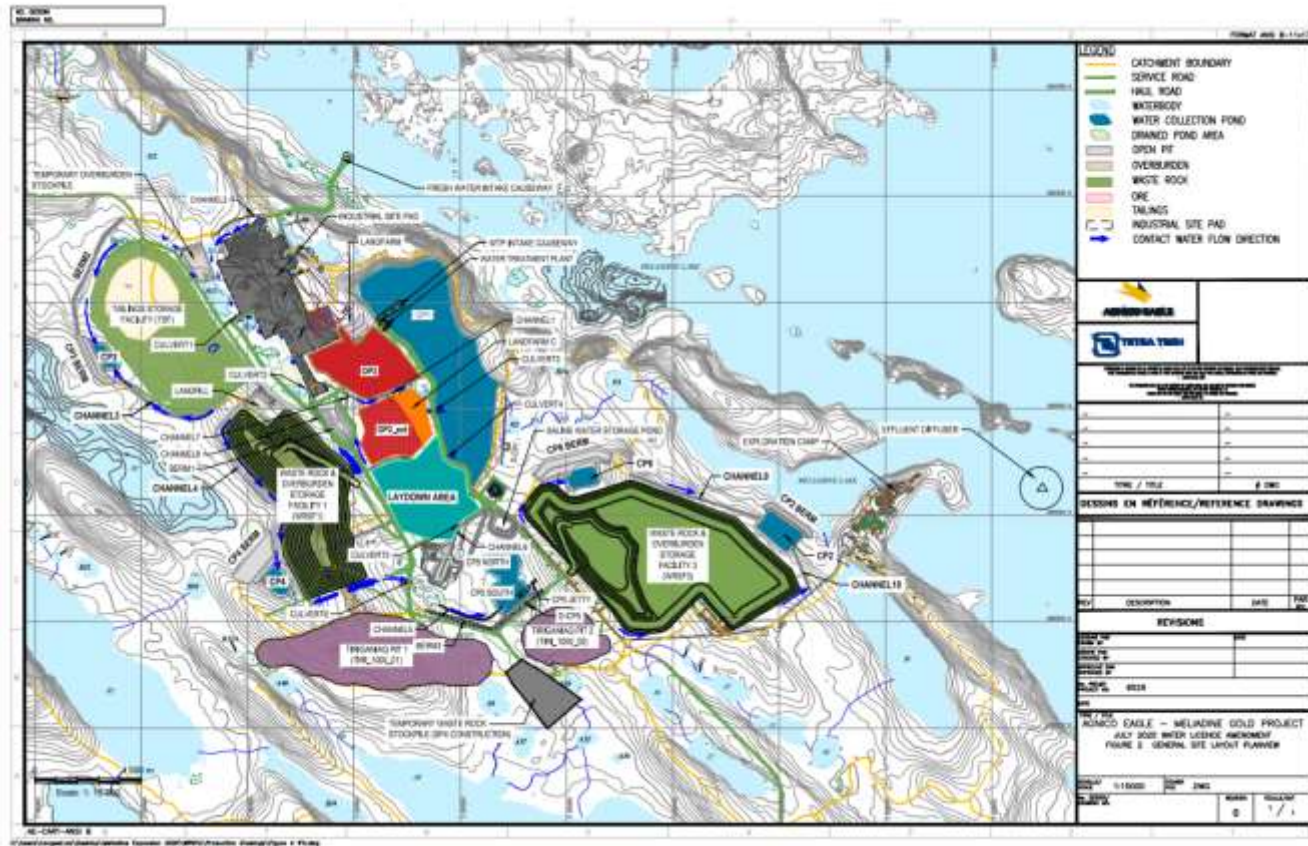


Agnico Eagle is proposing changes to the approved project activities under Type A Water Licence 2AM-MEL1631. Specifically, Agnico Eagle is seeking approval to include the following amendments:

- Updated total dissolved solids thresholds to Meliadine Lake;
- Increase annual freshwater consumption;
- Updated waste management strategy;
- Additional laydown area;
- Construction of site access roads;
- Updated Interim Closure and Reclamation Plan; and
- CP1 adaptive management strategy.

MELIADINE PROJECT OVERVIEW

2020 WATER LICENCE AMENDMENT



PROJECT TIMELINE



- Water Licence Amendment application needs to be approved by May 2021 or earlier to be operational by freshet 2021.

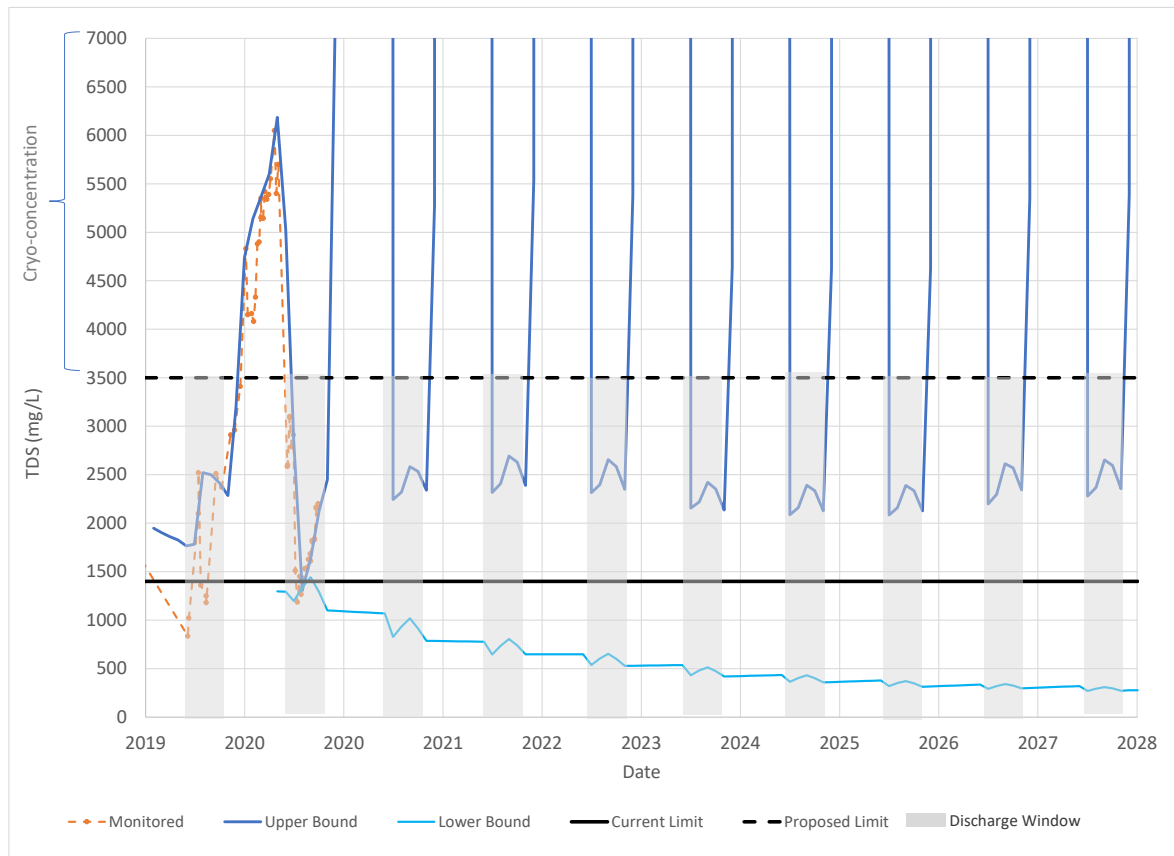
PROJECT DESCRIPTION



CP1 WATER MANAGEMENT



UPDATED WATER BALANCE AND WATER QUALITY FORECAST



UPDATED TDS THRESHOLDS TO MELIADINE LAKE



Updated Water Quality Management and Optimization Plan

- 2020 discharge season monitoring is completed and included:
 - Water quality analysis and toxicity testing of discharge and receiving environment, and plume delineation
- Key results:
 - The monitoring data confirm that the diffuser is working as planned and that water being released to Meliadine Lake is safe to the environment, fish, and other aquatic life
 - Toxicity testing of the discharge water has confirmed that it was not acutely toxic
 - MAC TDS concentration of 3,500 mg/L and MG TDS of 5,000 mg/L will remain protective of the receiving environment
 - Chronic toxicity has not been observed at the edge of the mixing zone
 - An in-lake benchmark of 1,000 mg/L TDS is protective of the environment
 - There is no build-up (accumulation) of TDS in Meliadine Lake
- Water balance and water quality forecast was updated for surface contact water management to support this part of the application

UPDATED TDS THRESHOLDS TO MELIADINE LAKE



Supplemental Study

- A supplemental investigation of toxicity was undertaken on a sensitive test species
- Results provide support for the proposed MAC TDS concentration of 3,500 mg/L and MG TDS of 5,000 mg/L, and the in-lake benchmark of 1,000 mg/L TDS

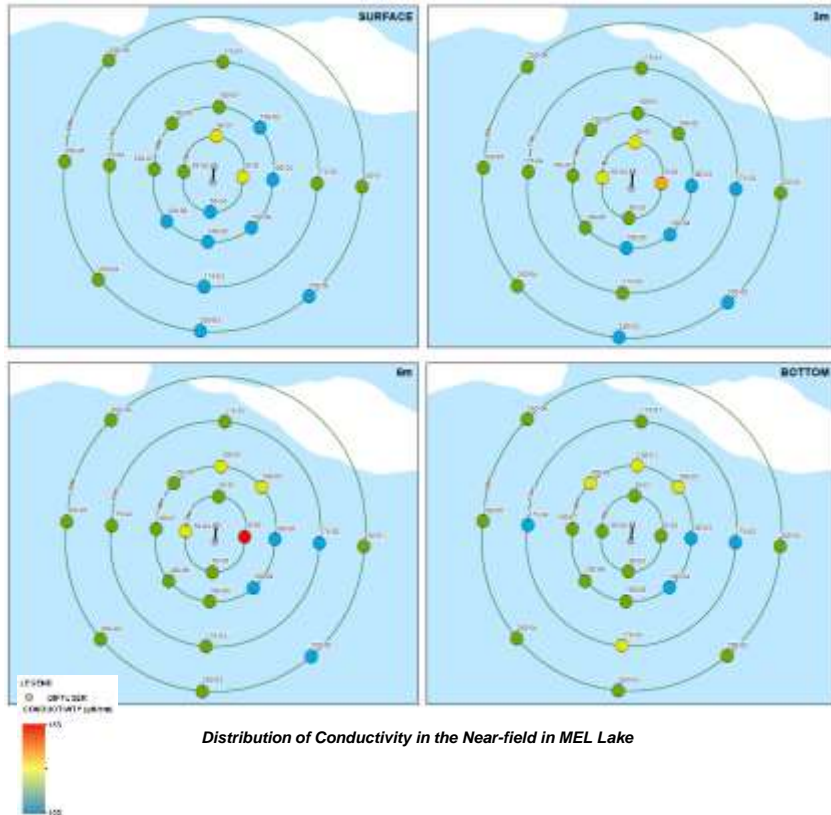
Endpoint	Chloride (mg/L)	TDS (mg/L)
Survival LC50	1,881	3,785
Reproduction IC25	1,010	2,053

UPDATED TDS THRESHOLDS TO MELIADINE LAKE

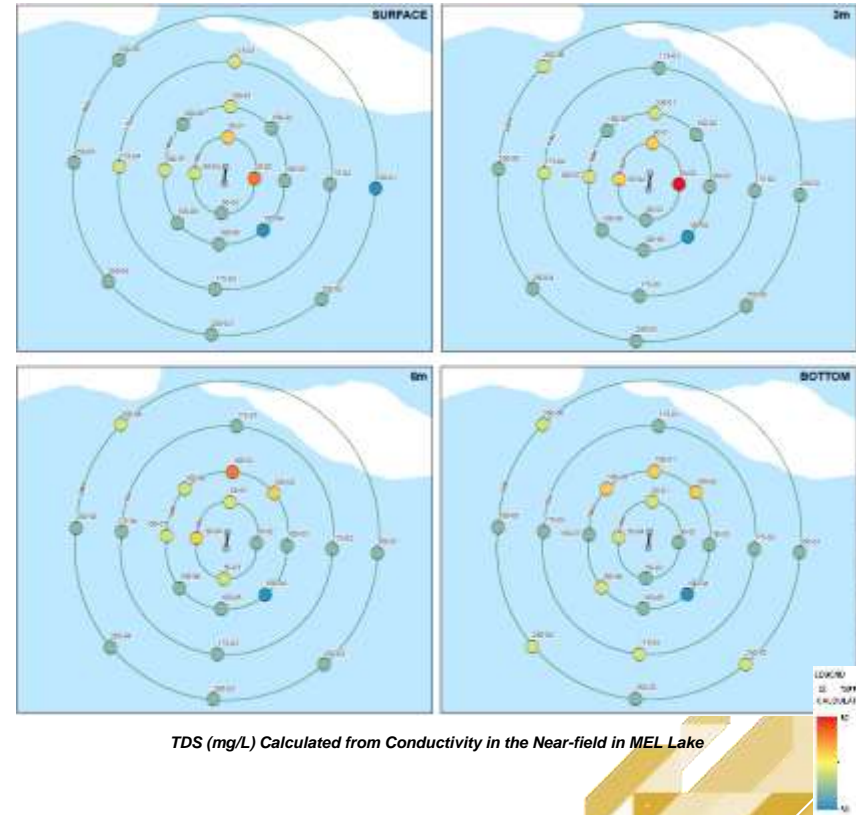
Plume Delineation Study



AGNICO EAGLE



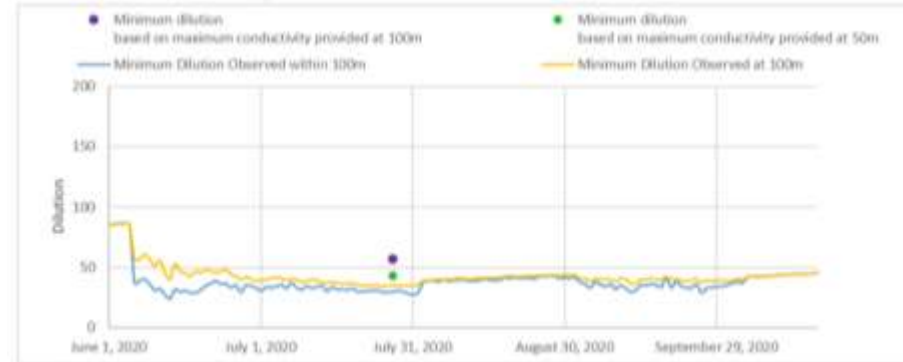
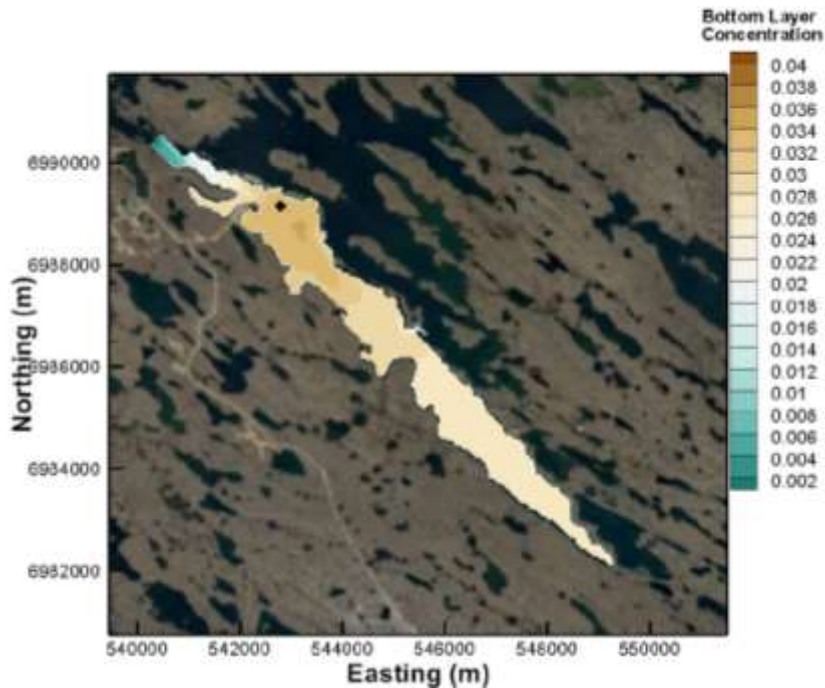
Distribution of Conductivity in the Near-field in MEL Lake



TDS (mg/L) Calculated from Conductivity in the Near-field in MEL Lake

UPDATED TDS THRESHOLDS TO MELIADINE LAKE

Hydrodynamic Three-Dimensional Model



CP1 ADAPTIVE MANAGEMENT



- CP1 diversion to the waterline is built into the alternative section of the Water Licence Amendment.
- This is a first pass of the adaptive management strategy and thresholds are based on water quality monitoring results at the end of pipe and the edge of the mixing zone.
 - Level 0: Normal operation
 - Level 1: Increase sampling frequency
 - Level 2: Decrease discharge rate or temporary stop the discharge
 - Level 3: CP1 water divert into the Waterline
- Additional thresholds will be based on water volume for diversion of CP1 water in the Waterline which is part of the alternative for this application.
- Agnico Eagle needs to keep the discharge to Meliadine Lake.

FRESHWATER MANAGEMENT



INCREASE ANNUAL FRESHWATER CONSUMPTION



- Due to increased tonnage, the process plant requires an increase of freshwater consumption;
- Water Licence annual freshwater consumption is 318,000 m³/year;
- Agnico Eagle is requesting an increase to a total of 741,706 m³/year;
- In the FEIS, the total freshwater requirements were assessed at 2,168,100 m³/year.

WASTE MANAGEMENT



UPDATED WASTE MANAGEMENT STRATEGY



- Waste rock from the open pits and underground mining that will not be used for site development purposes will be transported to the waste rock storage facilities (WRSFs) until the end of mining;
- Two (2) WRSFs are planned for the Project: WRSF1 and WRSF3.
- The previous WRSF2 has been removed and the WRSF3 has been extended;
- Ore stockpile 2 was also extended into the previous WRSF2 footprint;
- Laydown area to support open pit operation was added on the previous WRSF2 and P-Area Footprint.

SITE LAYOUT



LAYDOWN AREA

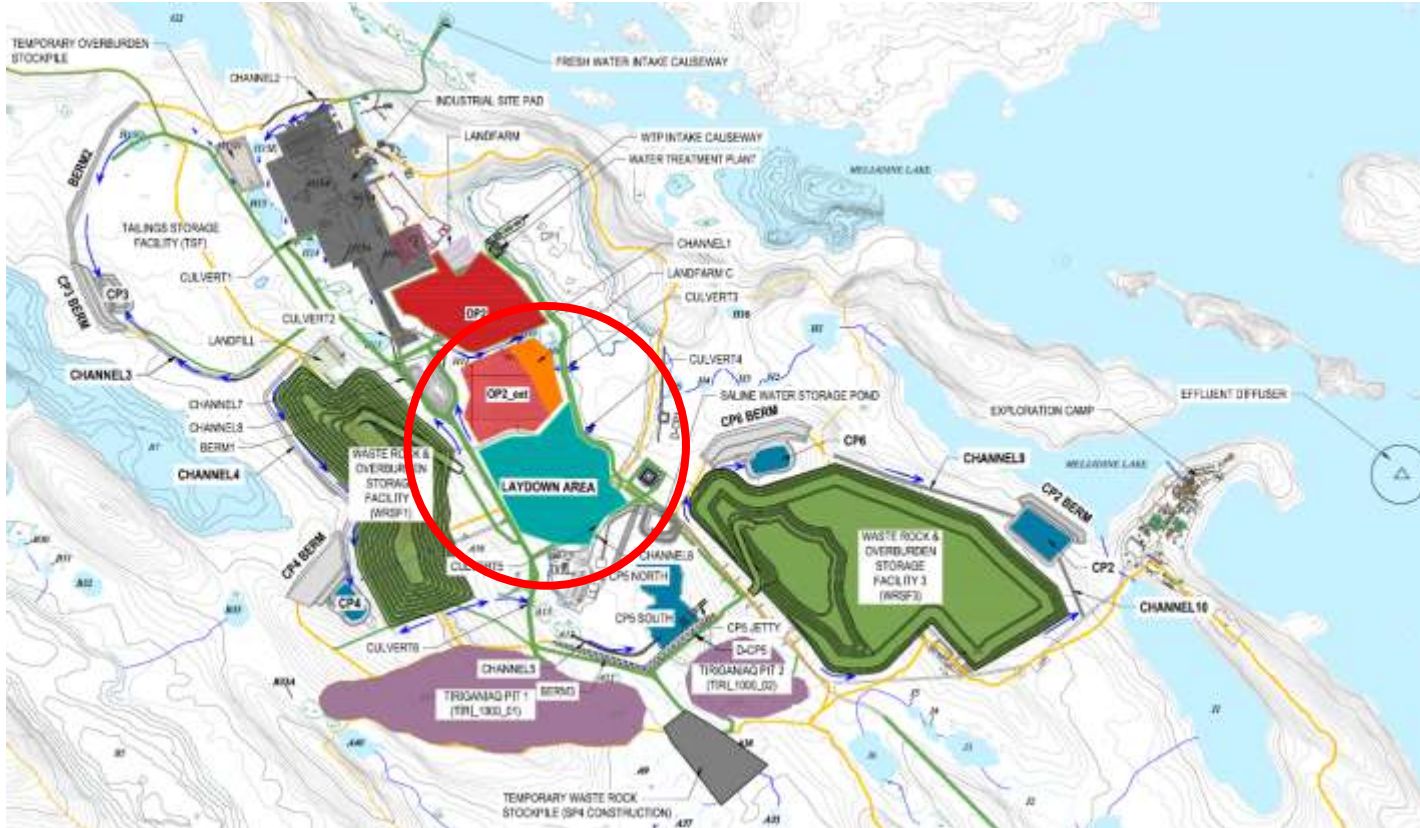


ADDITIONAL LAYDOWN AREA

With the start of operations, the mine recognized the requirement for additional surface laydown and storage space in a centralized location to the portals and open pits.

Infrastructure	Description
Garage Area	Small repair bay, earthworks repair bay, open pit garage, equipment parking area, parts storage containers
Warehouse Pad	Container area laydown, oversize material, steel racks, piping
Container Area 1	material storage, and equipment related to mining
Container Area 2	material storage, and equipment related to earth works
Ore Staging Area	Ore to be brought to surface and re-handled to OP2 Waste to be brought to surface and re-handled to WRSF's Seasonal Aggregate Staging and Crushing for general consumption Ore Stockpiling for consumption by Mill
Waste Staging Area	Waste to be brought to surface and re-handled to WRSF's
Mobile Crusher Area	Seasonal Aggregate Staging and Crushing for general consumption
Ore Pad 2 Extension	Ore Stockpiling for consumption by Mill
Landfarm C	Increase capacity for handling hydrocarbon

SITE LAYOUT



SITE ACCESS ROADS

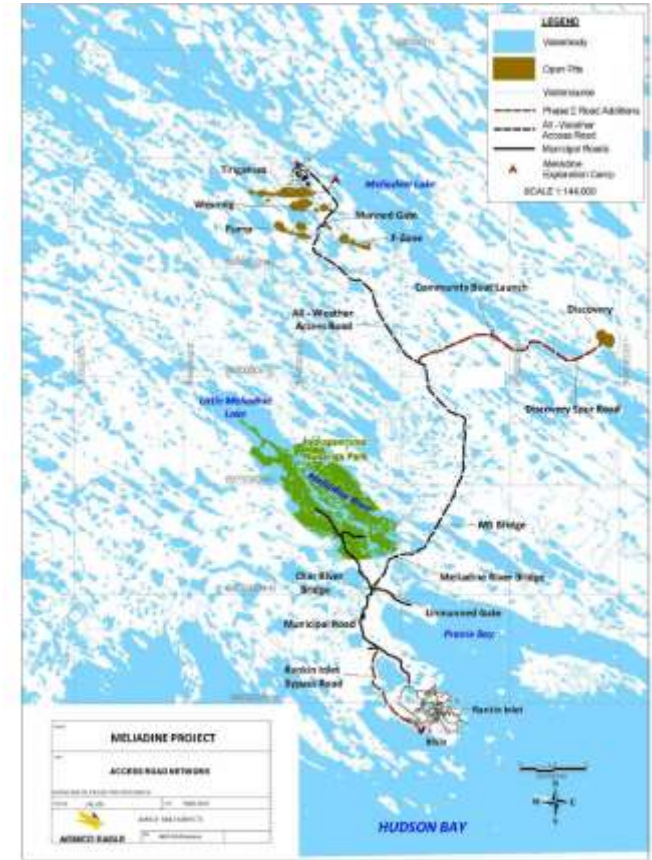


SITE ACCESS ROADS



AGNICO EAGLE

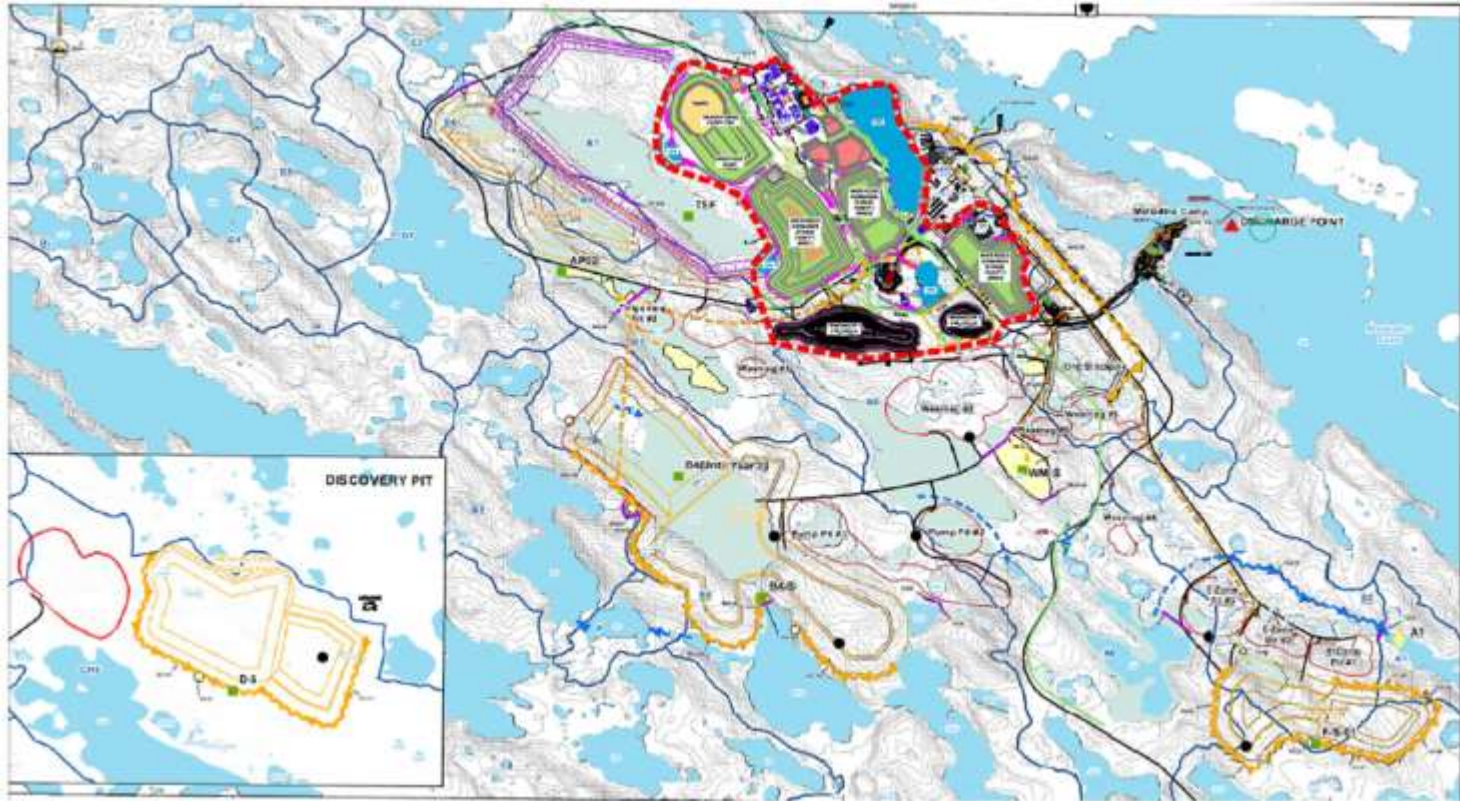
- To support future mining, Agnico Eagle is amending the Water Licence to include the construction of site access roads to future deposits, including Discovery, Pump, Fzone, WES-NORMEG.
- The assessment of these deposits was included in the FEIS (Agnico Eagle 2014) and included in Project Certificate No. 006.
- In the FEIS, the access road to Discovery was named “Discovery Spur Road”
- Agnico is planning the construction of the Meliadine Lake Community Boat launch as part of the work related to the Discovery road.



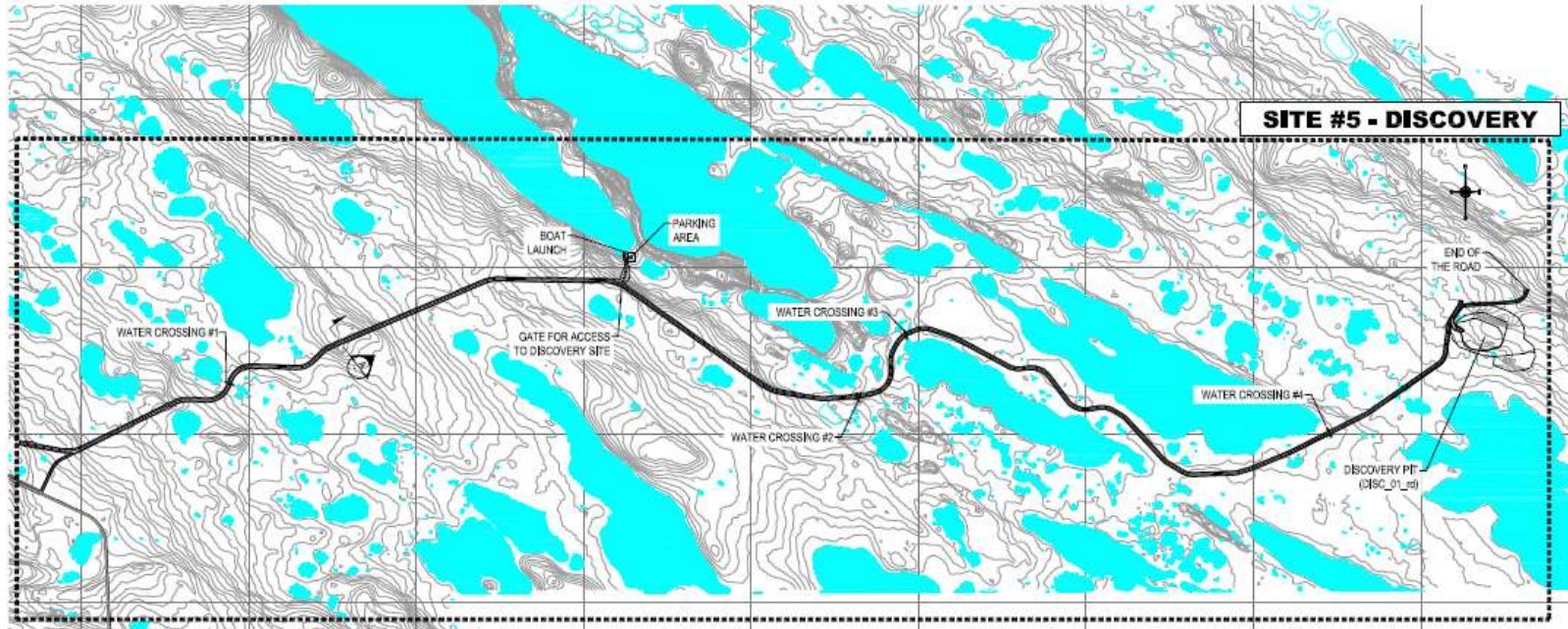
SITE ACCESS ROADS



AGNICO EAGLE



ACCESS ROAD TO DISCOVERY



CLOSURE AND RECLAMATION



CLOSURE AND RECLAMATION



Summary of the main changes in the Interim closure and reclamation plan are:

- WRSF3 extended footprint and removal of WRSF2;
- CP2, CP2-Berm, Channel 9 and 10;
- Ore pad and landfarm extension and laydown area including the laydown facilities;
- Transportation routes on site including internal access and haul roads;
- Roads to deposits (Discovery, Pump, Fzone, Wesmeg and Normeg areas); and,
- Waterline.

ICRP VERSIONS	Cost Estimate (\$)				
	ICRP 2015	ICRP 2019	ICRP 2020	2015 and 2019 difference	2019 and 2020 difference
GRAND TOTAL	\$47,449,338	\$59,514,717	\$66,879,798	\$12,065,380	\$7,365,081

CONSULTATION PLAN



WATER MANAGEMENT WORKING GROUP MEETINGS



Summary of Working Group Meetings

Date	Parties	Summary	Status
3-Jun	NWB, KIA, AEM, CIRNAC, ECCC	Discuss the terms of reference for the Water Management Working Group (WMWG)The purpose of the WMWG is to share ongoing data collection related to conditions in the Emergency Amendment Water Licence	Completed
25-Jun	NWB, KIA, AEM, ECCC	Update on studies initiated, data collected, and sharing of data	Completed
2-Jul	NWB, KIA, AEM, CIRNAC, ECCC	Presentation of first monthly of sampling; review and discussion of initial results (water chemistry and toxicity)	Completed
26-Aug	NWB, KIA, AEM, CIRNAC, ECCC	Update to the July presentation; review and discussion of results collected to date (water chemistry, toxicity, and plume delineation)	Completed
16-Sep	NWB, KIA, AEM, CIRNAC, ECCC	Update to the August presentation; review and discussion of results collected to date (water chemistry and toxicity)	Completed
2-Oct	NWB, KIA, AEM, CIRNAC, ECCC	Update to the September presentation; review and discussion of results collected to date (water chemistry and toxicity)	Completed
6-Nov	NWB, KIA, AEM, CIRNAC, ECCC	Update to the October presentation; review and discussion of results collected to date (water chemistry and toxicity) Meeting participants requested to provide feedback and lessons learned from the WMWG meetings	Completed-Meeting In Progress-Feedback

- The purpose of these meetings was to share and present data collected specifically under the WQ-MOP
- The meetings provided opportunity to discuss the results, ask questions about the program, and provide comments for refinement or adjustment to the program
- All data collected under this program has been shared with the working group
- The monitoring data confirm that the diffuser is working as planned and that water being released to Meliadine Lake is safe to the environment, fish, and other aquatic life

CONSULTATION PLAN



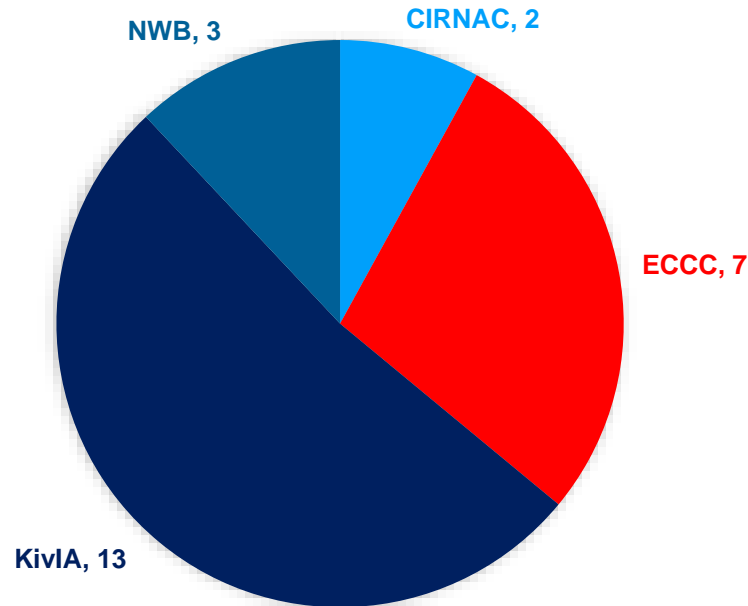
Date	Stakeholder	Method	Status	LE
7-Jul	Rankin Inlet - Elders	In person with local staff	Completed	
20-Jul	KIA Executive	Teleconference	Completed	
22-Jul	Rankin Inlet - Elders	In person with local staff	Completed	
27-Jul	Rankin Inlet HTO	In person with local staff & teleconference	Completed	
31-Jul	Rankin Inlet CLARC and KIA Lands	In person with local staff & teleconference	Completed	
21-Aug	KIA Executive and Lands	Teleconference	Completed	
9-November	Rankin Inlet Public	Call-in Radio Show	Completed	
10-November	Rankin Inlet Public	In person with local staff & teleconference	Completed	
November	Rankin Inlet CLARC and KIA Lands	In person with local staff and senior management & teleconference	Postponed	
November	KIA Executive	In person with local staff and senior management & teleconference	Postponed	
November	Rankin Inlet HTO	In person with local staff and senior management & teleconference	Postponed	
November	Rankin Inlet Hamlet	In person with local staff and senior management & teleconference	Postponed	
November	Kivalliq Wildlife Board	In person with local staff and senior management & teleconference	Postponed	
November	Chesterfield Inlet CLARC	In person with local staff and senior management & teleconference	Postponed	
November	Rankin Inlet Public	In person with local staff and senior management & teleconference	Postponed	
November	Rankin Inlet - Women	In person with local staff & teleconference	Postponed	
November	Rankin Inlet - Youth	In person with local staff & teleconference	Postponed	
November	Rankin Inlet - Elders	In person with local staff & teleconference	Postponed	
November	Rankin Inlet - Cabin Owners	On the land with local staff	Postponed	

INFORMATION REQUESTS

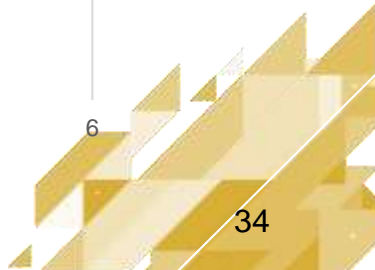
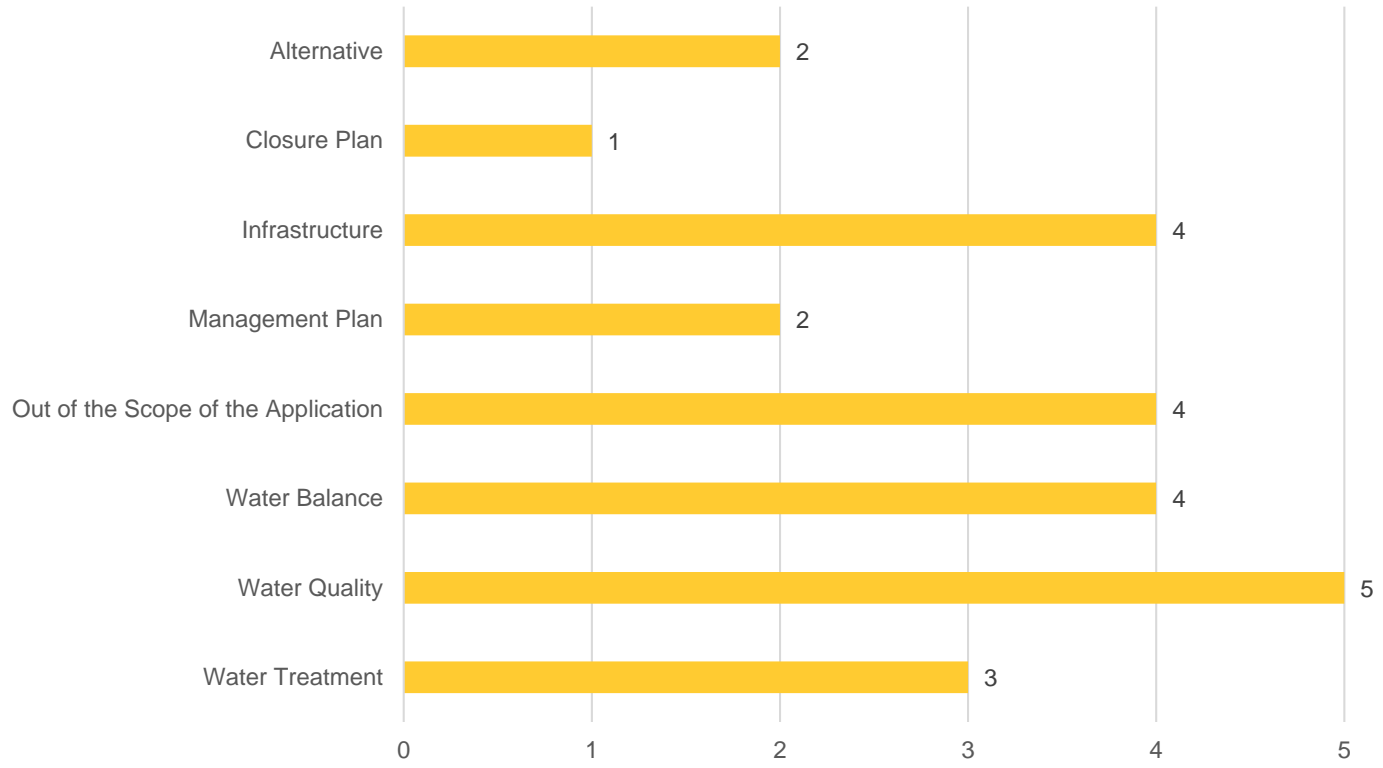


INFORMATION REQUESTS BY INTERVENER

- A total of 25 Information Requests were received



INFORMATION REQUESTS BY THEME

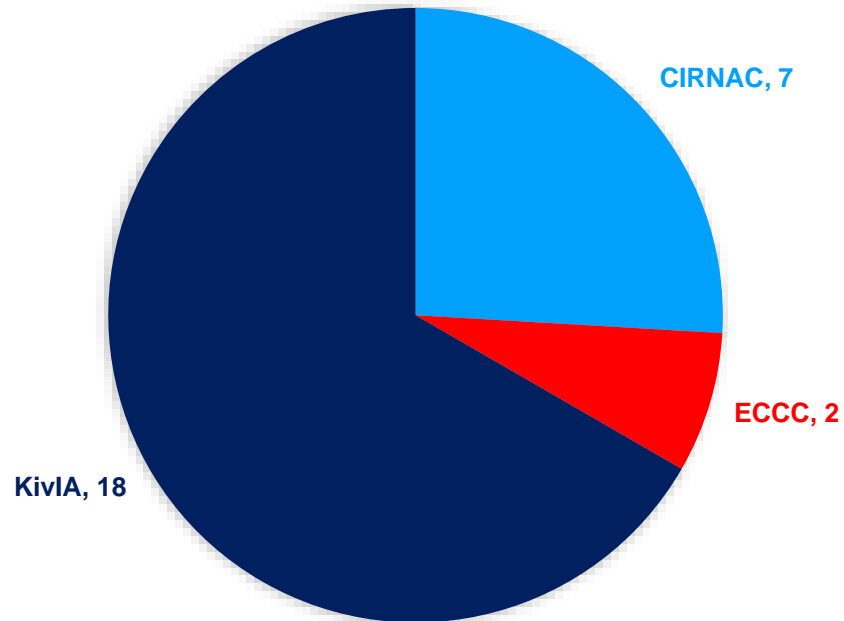


TECHNICAL COMMENTS

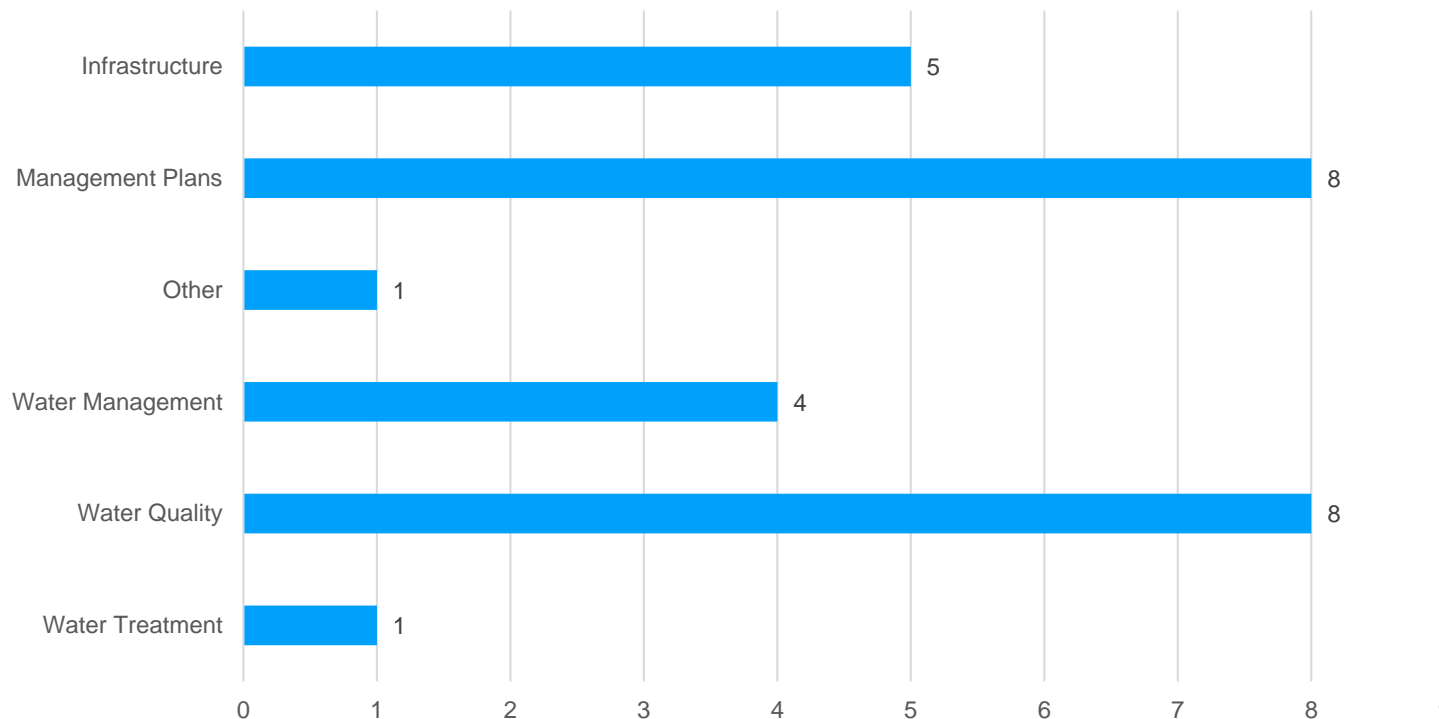


TECHNICAL COMMENTS BY INTERVENER

A total of 27 technical comments were received



TECHNICAL COMMENTS BY THEME



THANKS

