



AGNICO EAGLE

MELIADINE GOLD PROJECT

FINAL PUBLIC HEARING
TYPE A WATER LICENCE APPLICATION

- Project Overview
- Project Application
- Mitigation, Management, and Monitoring Plans
- Closure and Reclamation/Security



8BC-MEL-1516

- Pre-development Licence
- Received October 6, 2015
- October 2015 to Approval of Type A Water Licence Application
- All requirements will be incorporated into the Type A

2BW-MEL-1525

- Meliadine All-weather Access Road
- All requirements will be incorporated into the Type A

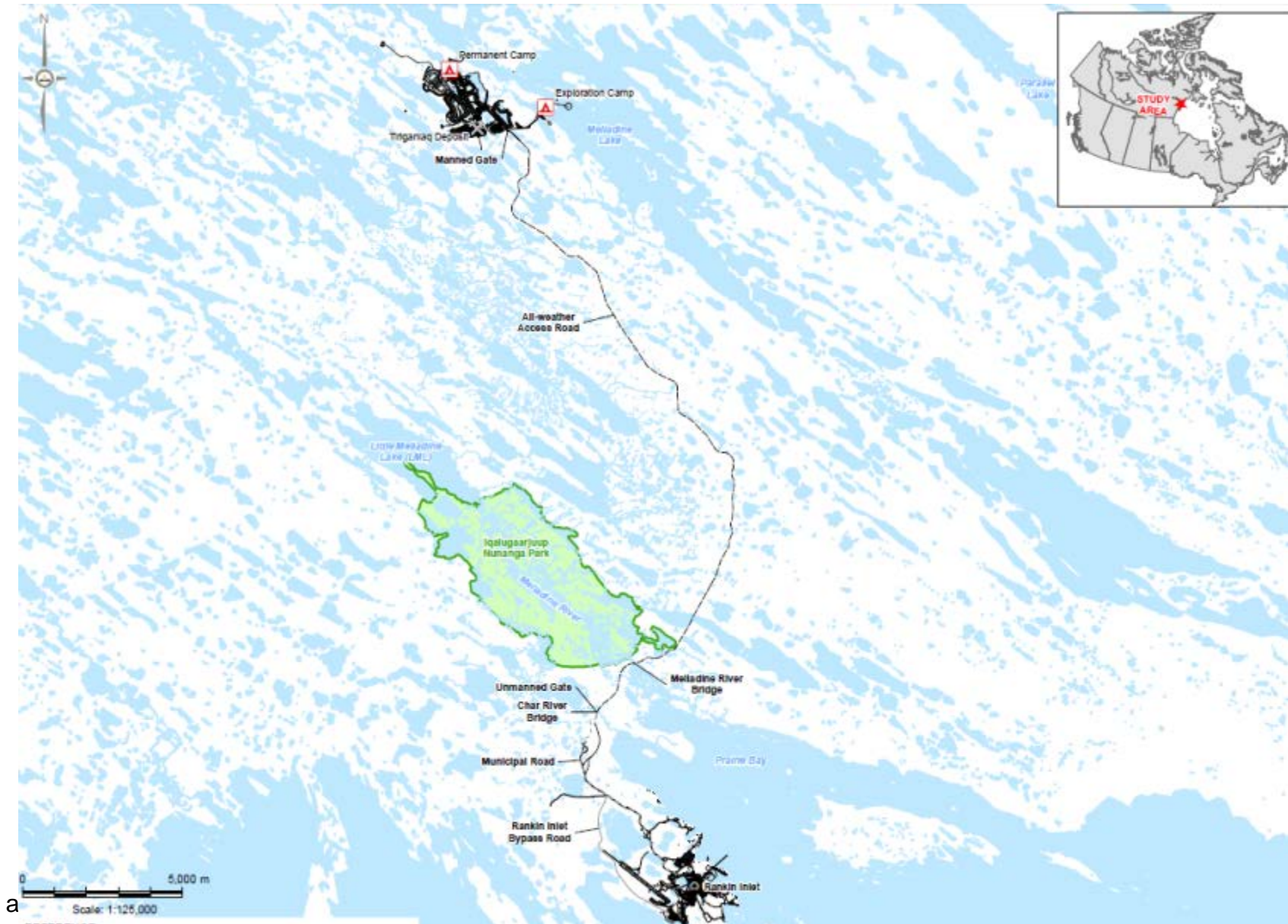
2BB-MEL-1424

- Meliadine West Exploration Licence
- Licence to be maintained as standalone
- Except all conditions related to the landfill to be incorporated to the Type A

2BE-MEP-1318

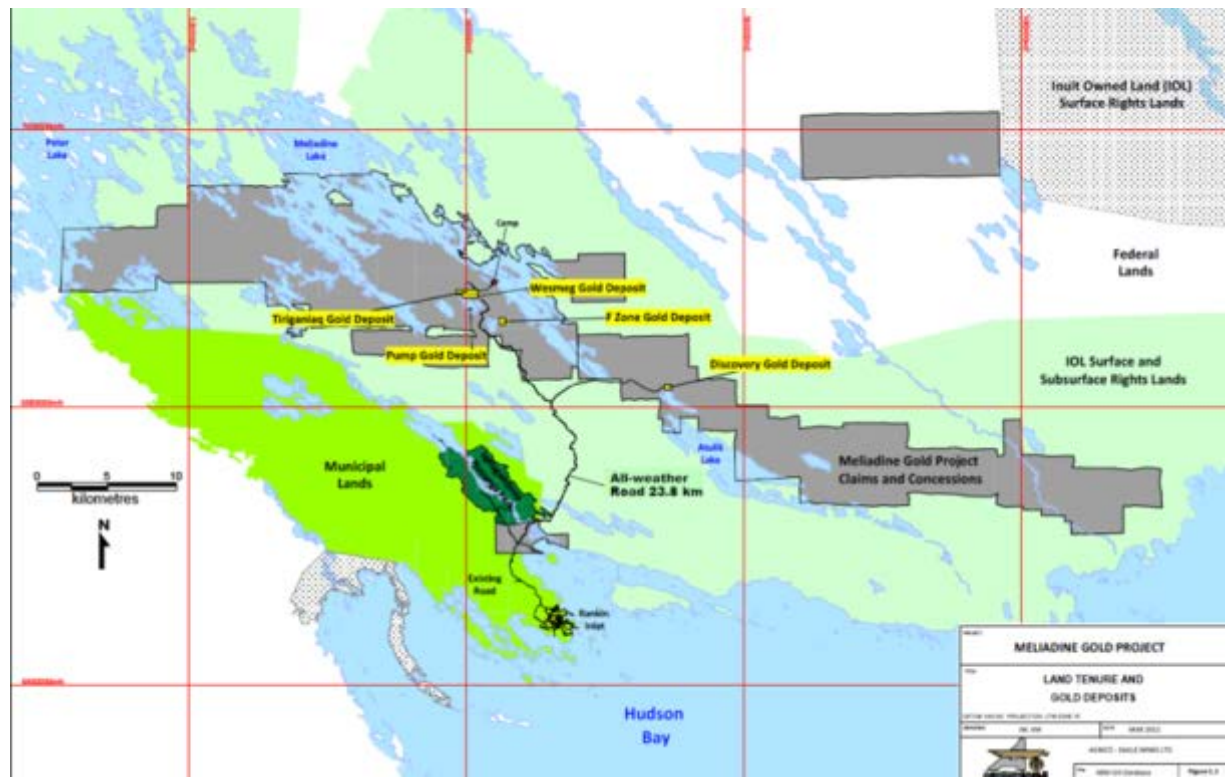
- Meliadine East Exploration Licence
- Licence to remain standalone

PROJECT OVERVIEW



MELIADINE GOLD MINE PROJECT

- The Project is composed of five known gold deposits:
 - *Tiriganiaq, F Zone, Pump, Wesmeg, and Discovery*
- Agnico Eagle proposes to develop these deposits in a phased approach to better manage the initial capital investment required and to allow production to commence while ongoing exploration continues to increase the known ore reserve



MELIADINE GOLD MINE PROJECT – PHASED APPROACH

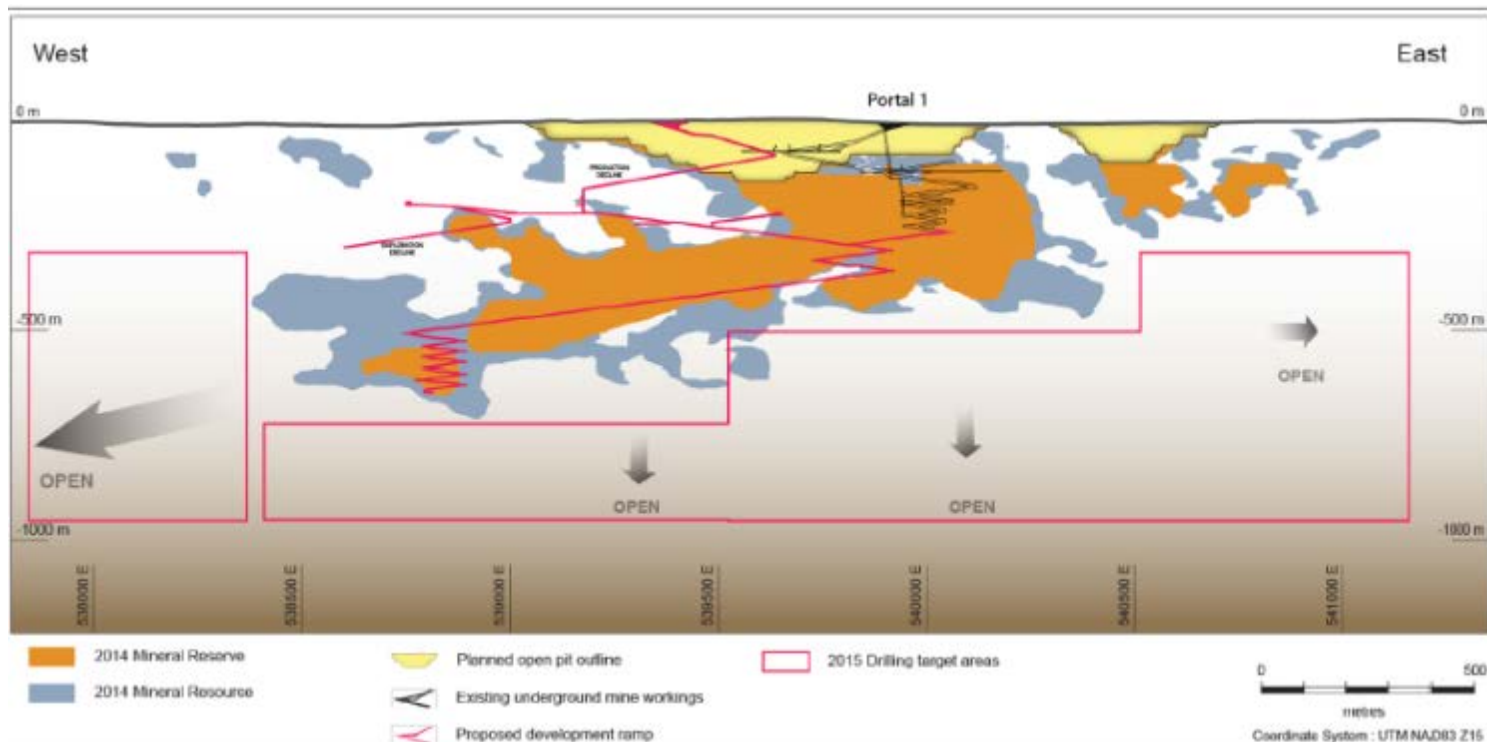


- The initial phase of development (Phase 1) focuses on the development of the Tiriganiaq gold deposit using a traditional open-pit mining method and underground mining.
- Two open pits (Tiriganiaq Pit 1 and Tiriganiaq Pit 2) and one underground mine (Tiriganiaq Underground) will be developed.
- Phase 2 will be defined and permitted during this 8 year Phase 1 period once the other deposits are better defined through ongoing exploration drilling.

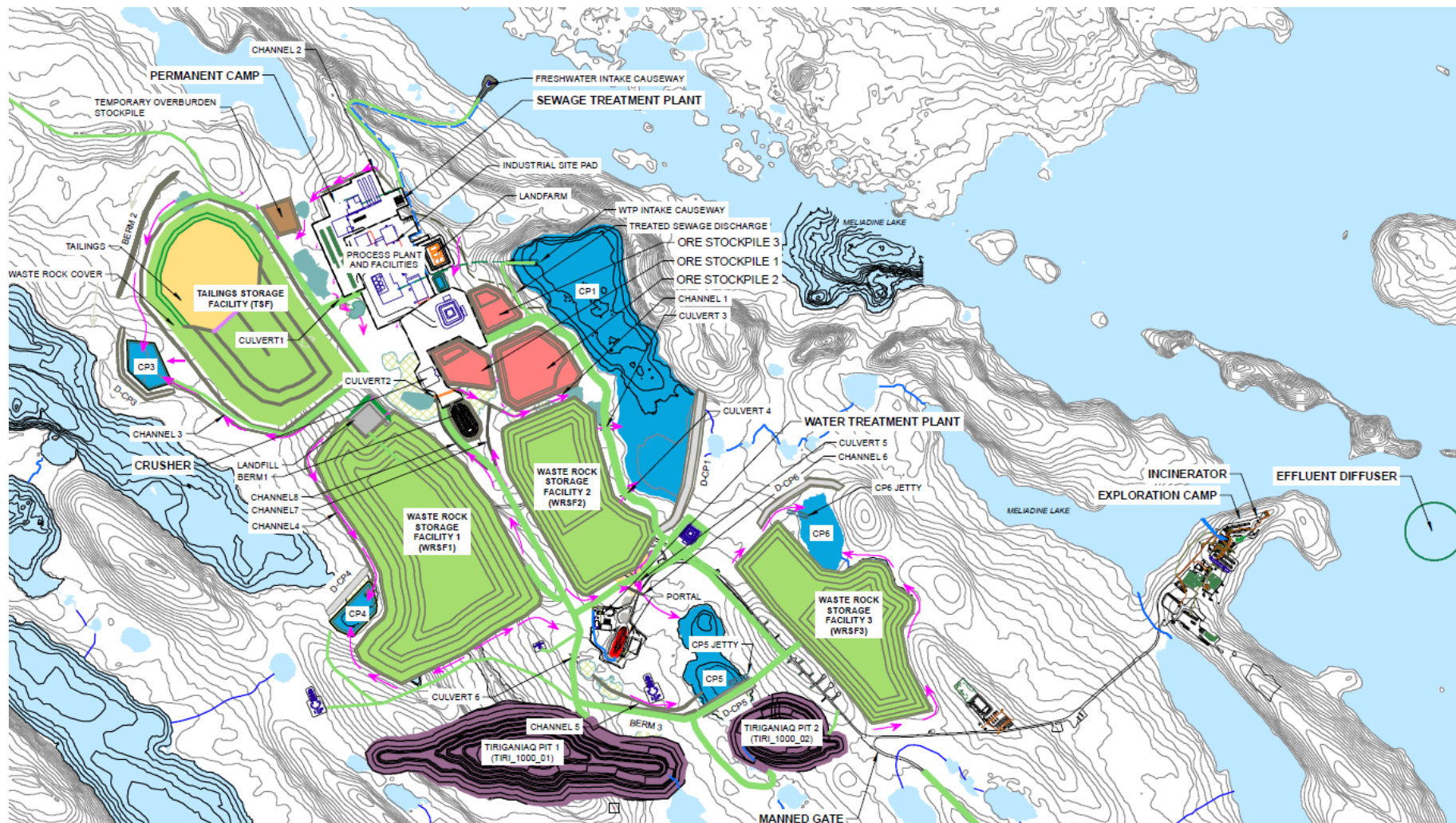
PROJECT OVERVIEW - PHASE 1

Meliadine Gold Project Facts

- 8 year active mine life
 - *Construction 4 years; Active Mining 8 years*
- Open Pit and Underground Mining of Tiriganiaq deposit
 - *3000 tpd first 3 years; 5000 tpd remaining 5 years*
- Total of 12.1 MT of ore



MELIADINE GOLD MINE PROJECT – PHASE 1



PROJECT APPLICATION

- Construction, operation, and maintenance of on site infrastructure
- Mining two open pits and underground Tiriganiaq deposit
- Milling using conventional gold milling circuit
- Water use from Meliadine Lake (north of industrial pad)
- Use of 62,000 c.m/y for construction phase and 318,000 c.m/y during operation
- Waste rock storage of 31.8Mt and overburden storage of 7.4Mt
- Wastewater treatment and final discharge via diffuser to Meliadine Lake
- Itivia Port: laydown area, fuel storage facility, barge structure, and by pass road

MELIADINE PROJECT SCHEDULE







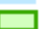


- Pre-construction (Year -5; 2015)
- Construction (Year -4 to Year -1; 2016 to 2019)
- Operation (Year 1 to Year 7; 2019 to 2026)
- Closure (Year 8 to Year 11; 2027 to 2030)
- Post-closure (Year 12 to Year 17; 2031 to 2036)

Agnico Eagle's objective is to continue mining as long as possible, as long as resources are available

PROJECT APPLICATION – PROJECT SITE PLAN



LEGEND

-  PROPOSED MINE SITE
-  QUARRY/BORROW PIT LOCATION
-  WATERCOURSE CROSSING
-  ALL-WEATHER ACCESS ROAD (AWAR)
-  ROAD - NEW
-  ROAD - EXISTING
-  WATERCOURSE
-  WATERBODY
-  TERRITORIAL PARK

PROJECT APPLICATION – INFRASTRUCTURE

Mining and Milling Infrastructure

- Tiriganiaq Pit(s)
- Overburden Storage Facilities
- Ore Storage Facilities
- Process Plant

Water Use and Management Infrastructure

- Water Collection Ponds
- Water Retention Dikes and Berms
- Water Collection Ditches
- Water Treatment Plant
- Diffuser

Waste Disposal and Management Infrastructure

- Landfill
- Incinerator
- Landfarm
- Sewage Treatment
- Waste Rock Storage Facilities
- Tailing Storage Facility
- Minewater Disposal

Satellite Infrastructure

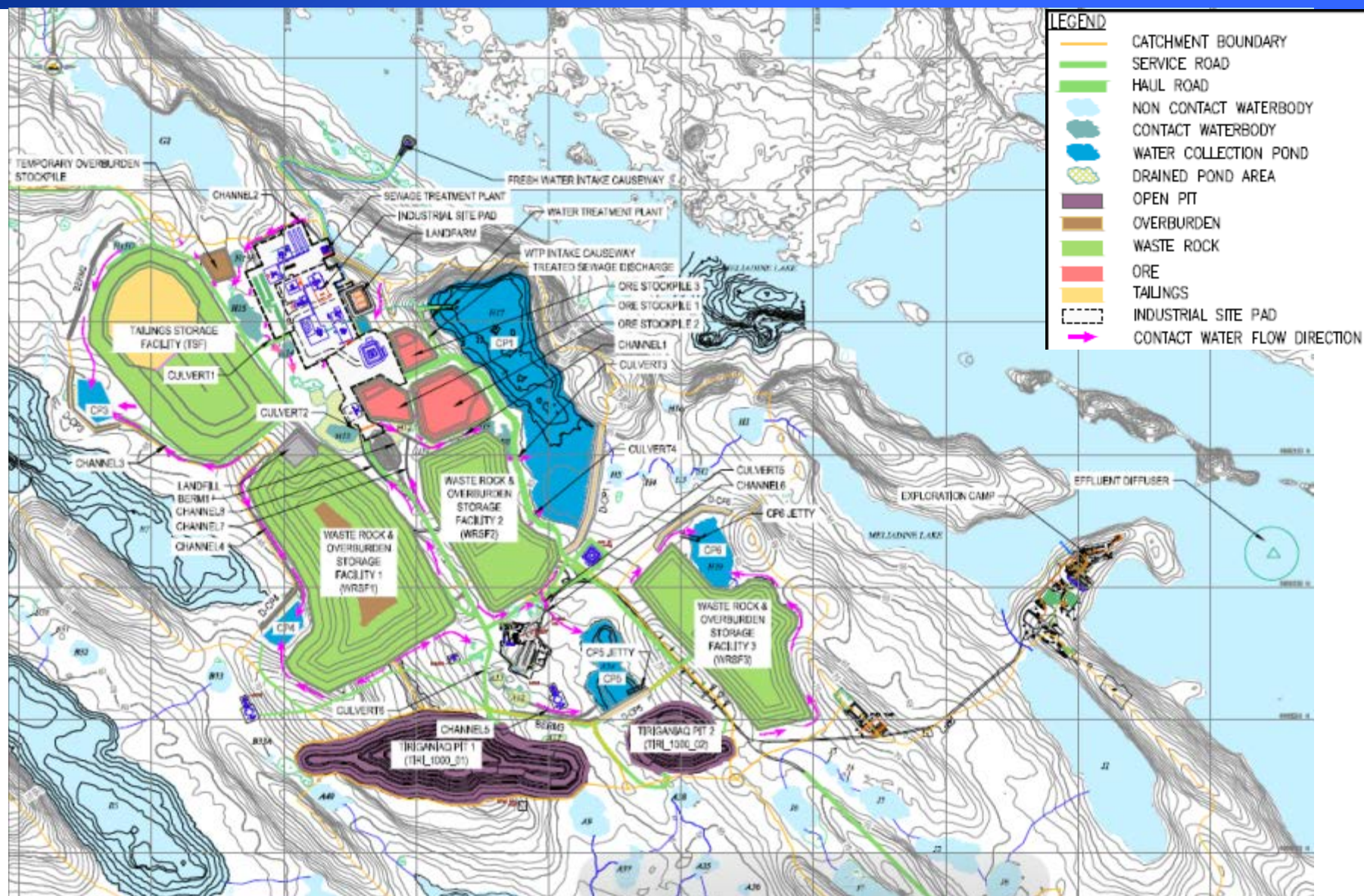
- Itivia

Accommodation and Associated Infrastructure

PROJECT APPLICATION – GENERAL SITE LAYOUT YEAR 7 - OPERATIONS



AGNICO EAGLE



Satellite Infrastructure

- Fuel storage facility
- Laydown and material storage area
- Barge structure
- Bypass Road

PROJECT APPLICATION – SATELLITE INFRASTRUCTURE

Satellite Infrastructure

- Fuel storage facility
- Laydown and material storage area
- Barge structure
- Bypass Road



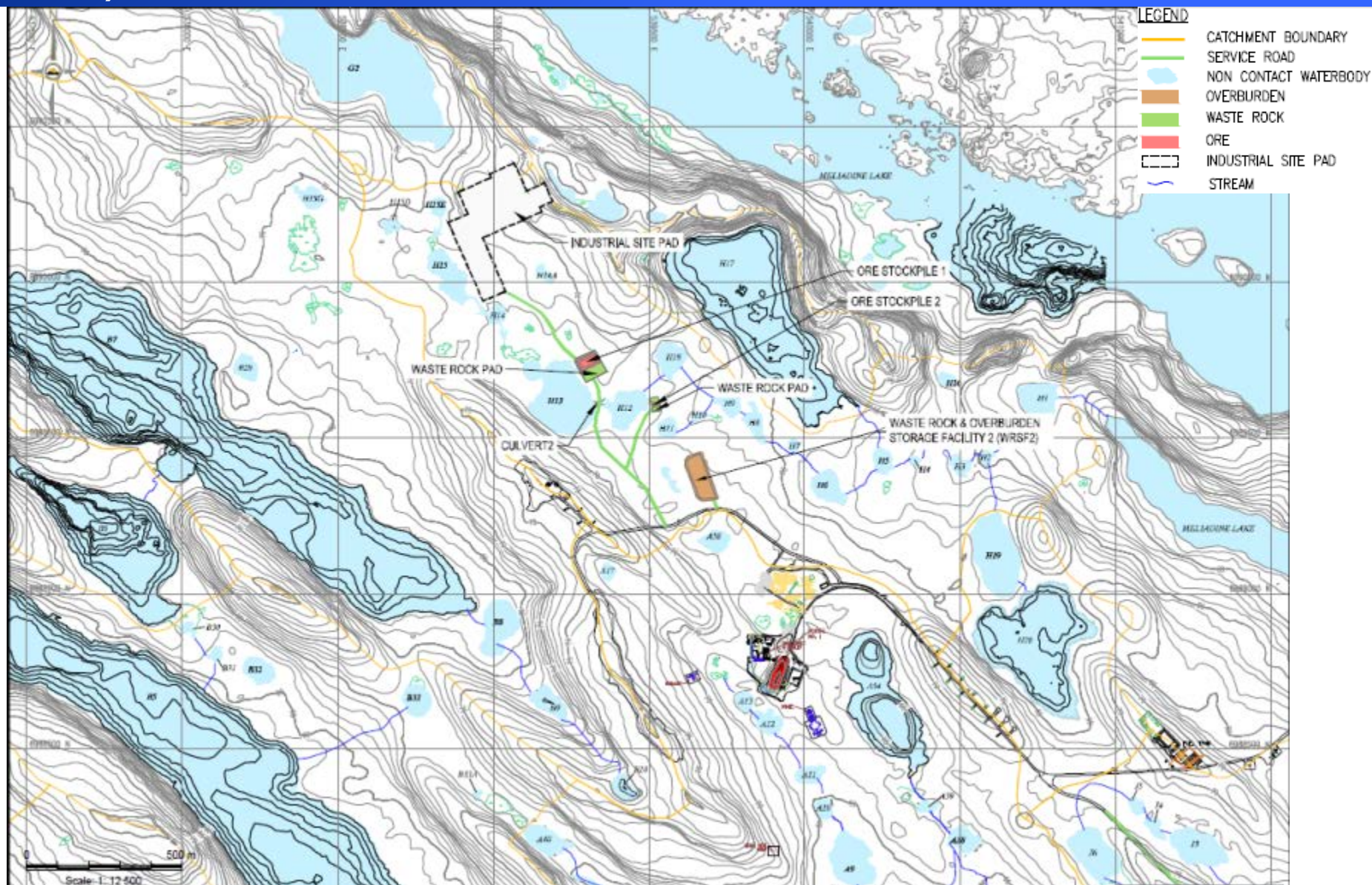
Accommodation and Associated Infrastructure

- Accommodations
- Explosive Production and Storage
- Laboratory/Core Shack
- Quarries and Borrow Pits
- Maintenance, Warehouse, and Laydown
- Fuel Storage
- Roads

PROJECT APPLICATION – SITE LAYOUT (YEAR -5; 2015)



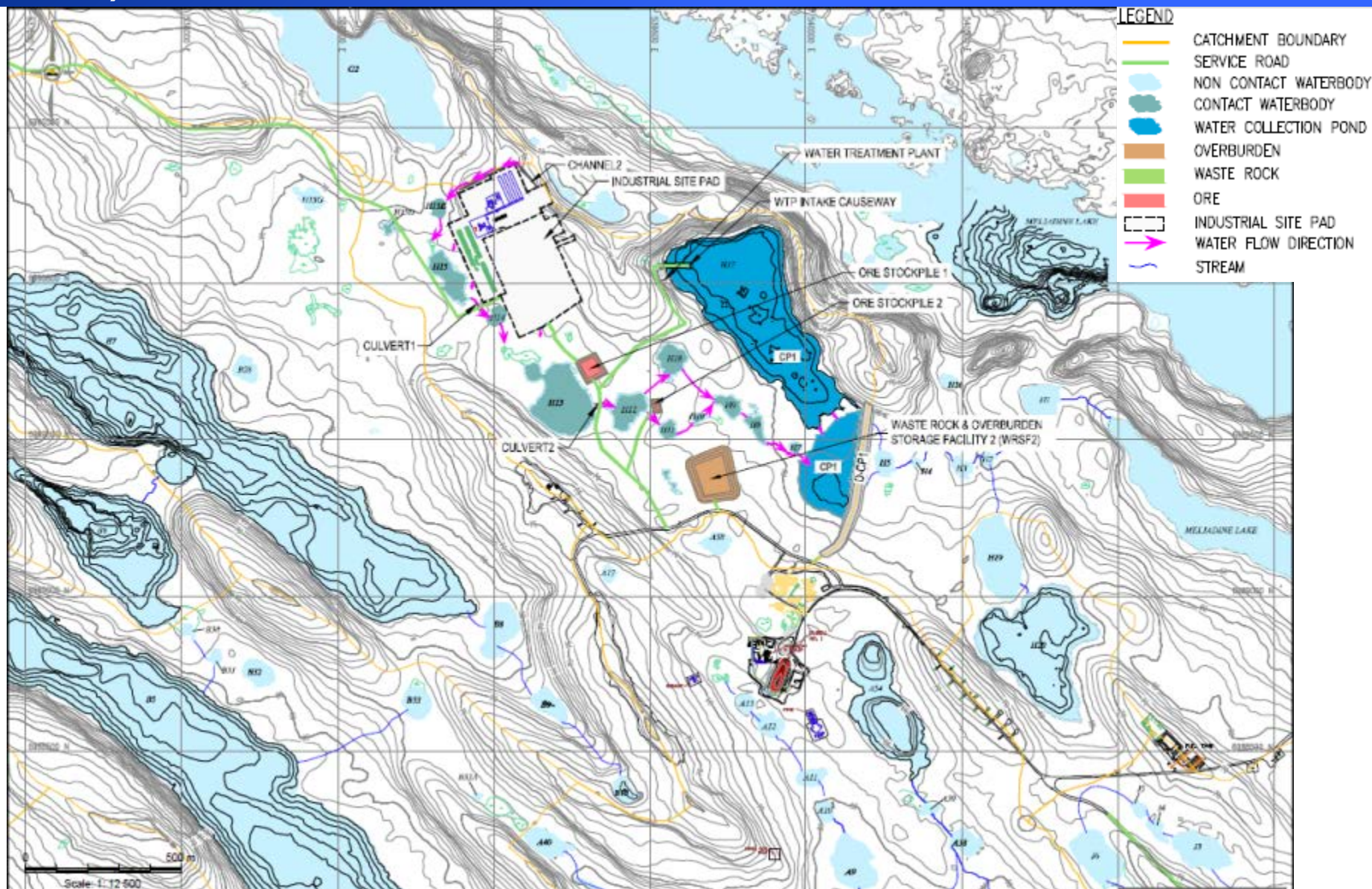
AGNICO EAGLE



PROJECT APPLICATION – SITE LAYOUT (YEAR -4; 2016)



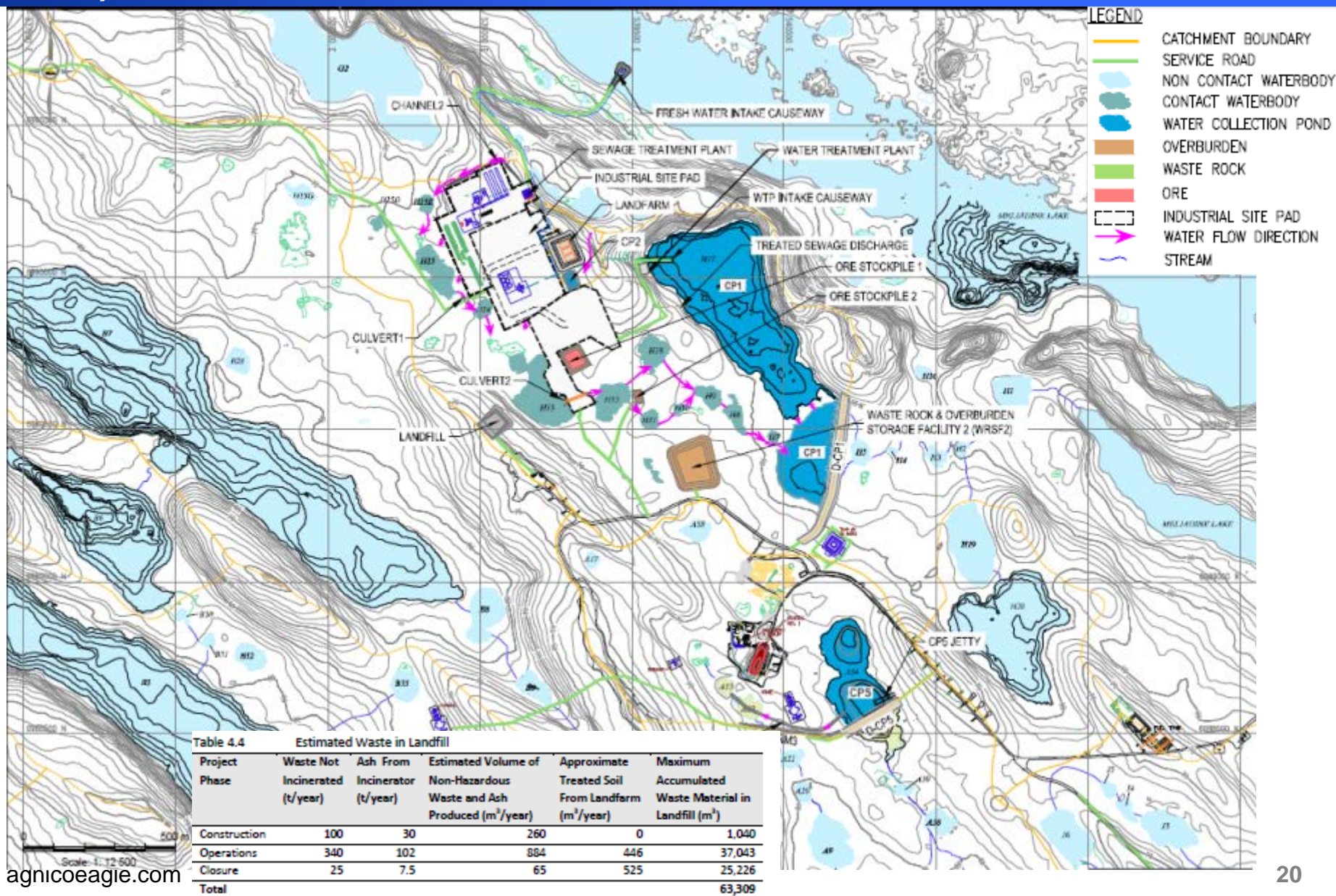
AGNICO EAGLE



PROJECT APPLICATION – SITE LAYOUT (YEAR -3; 2017)



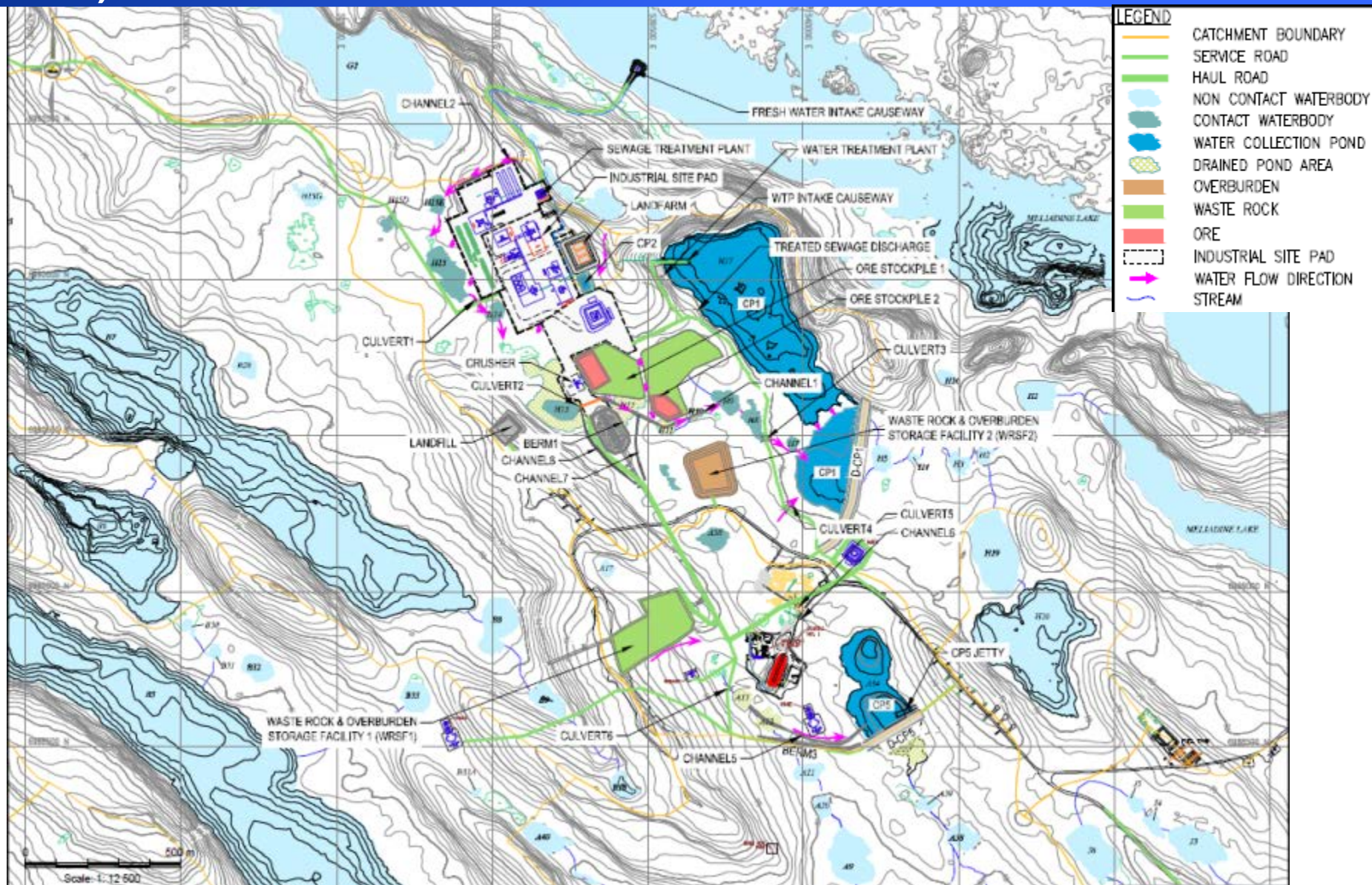
AGNICO EAGLE



PROJECT APPLICATION – SITE LAYOUT (YEAR -2; 2018)



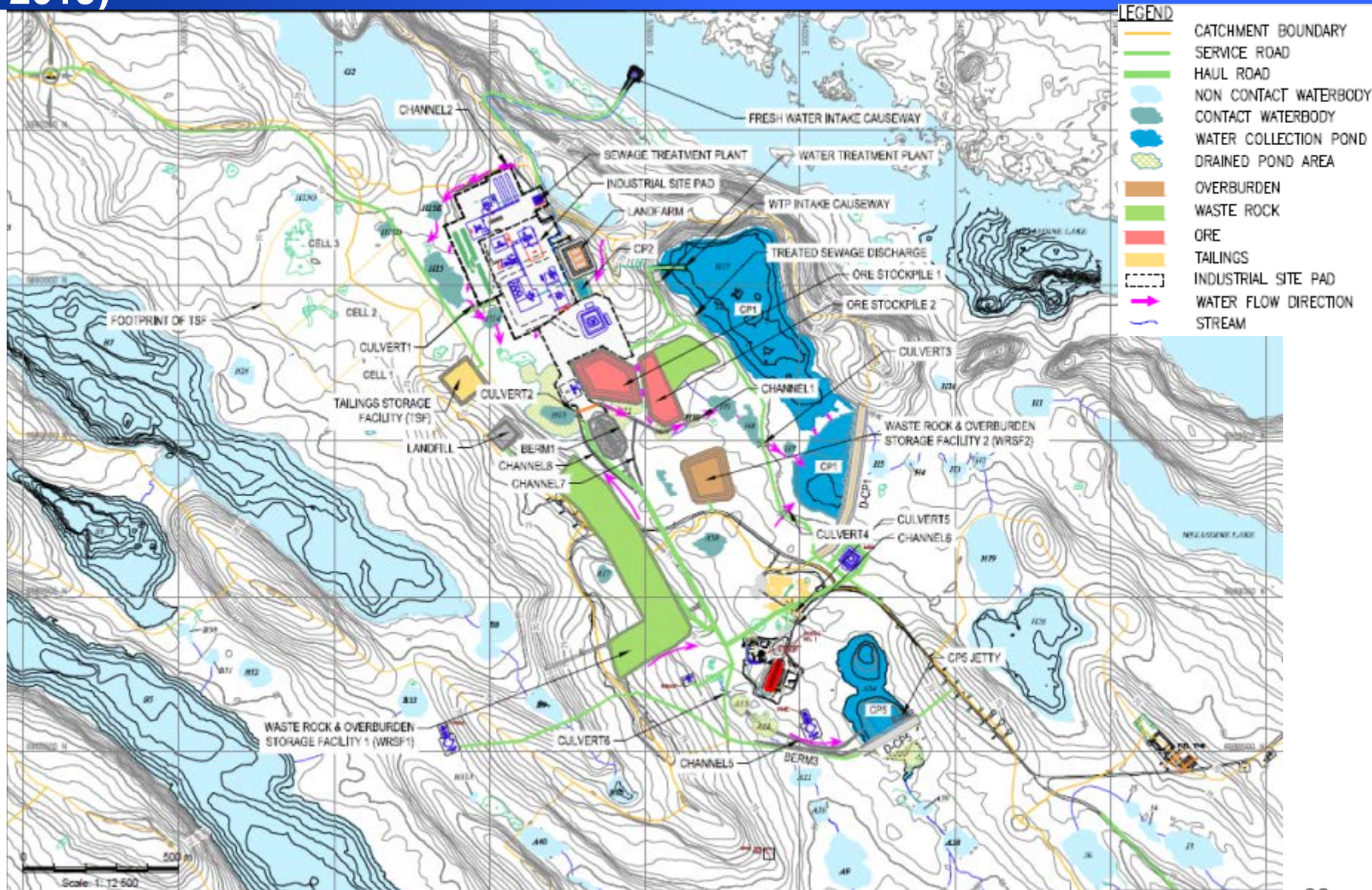
AGNICO EAGLE



PROJECT APPLICATION – SITE LAYOUT (YEAR -1; 2019)



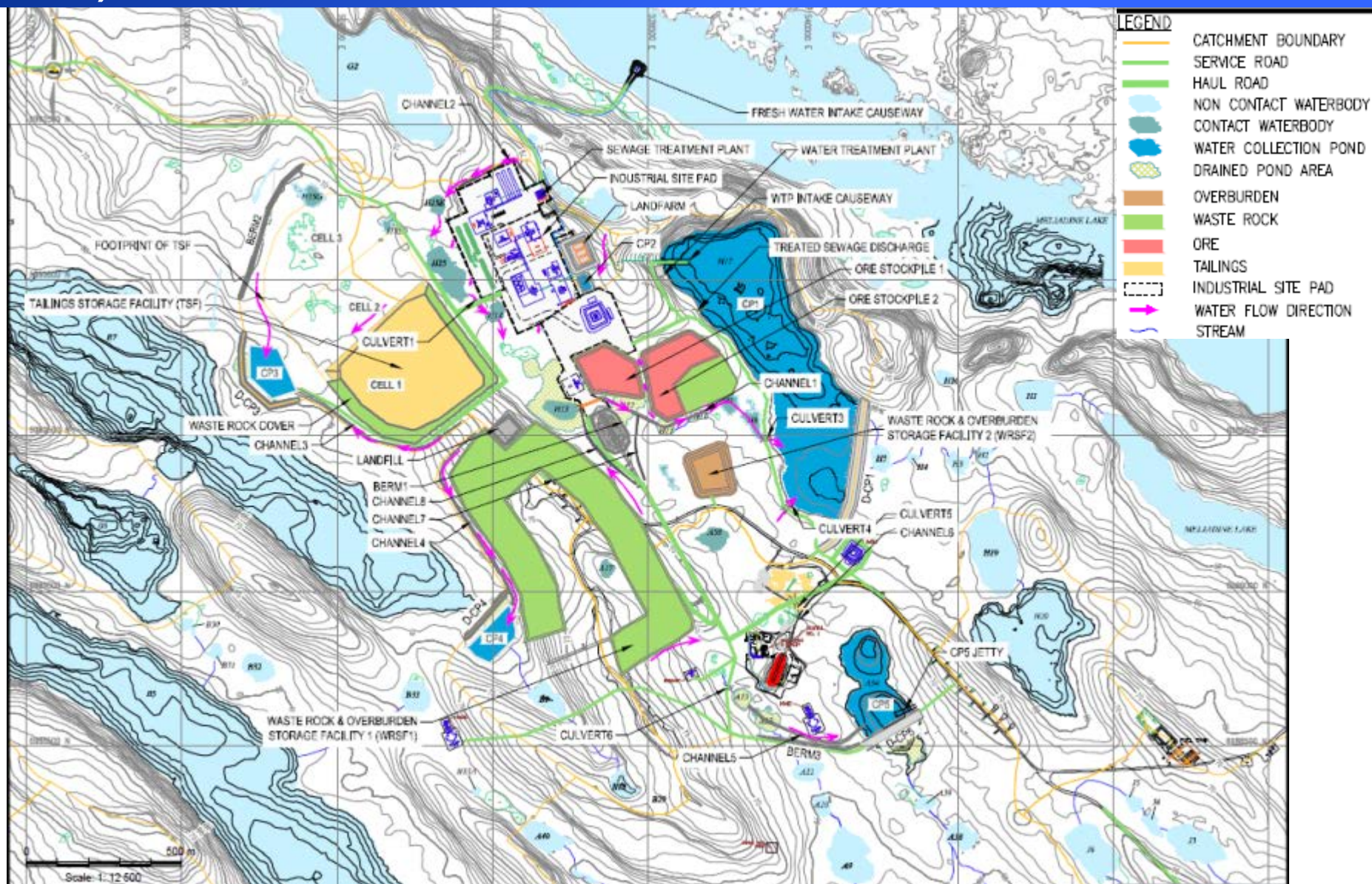
AGNICO EAGLE



PROJECT APPLICATION – SITE LAYOUT (YEAR 1; 2020)



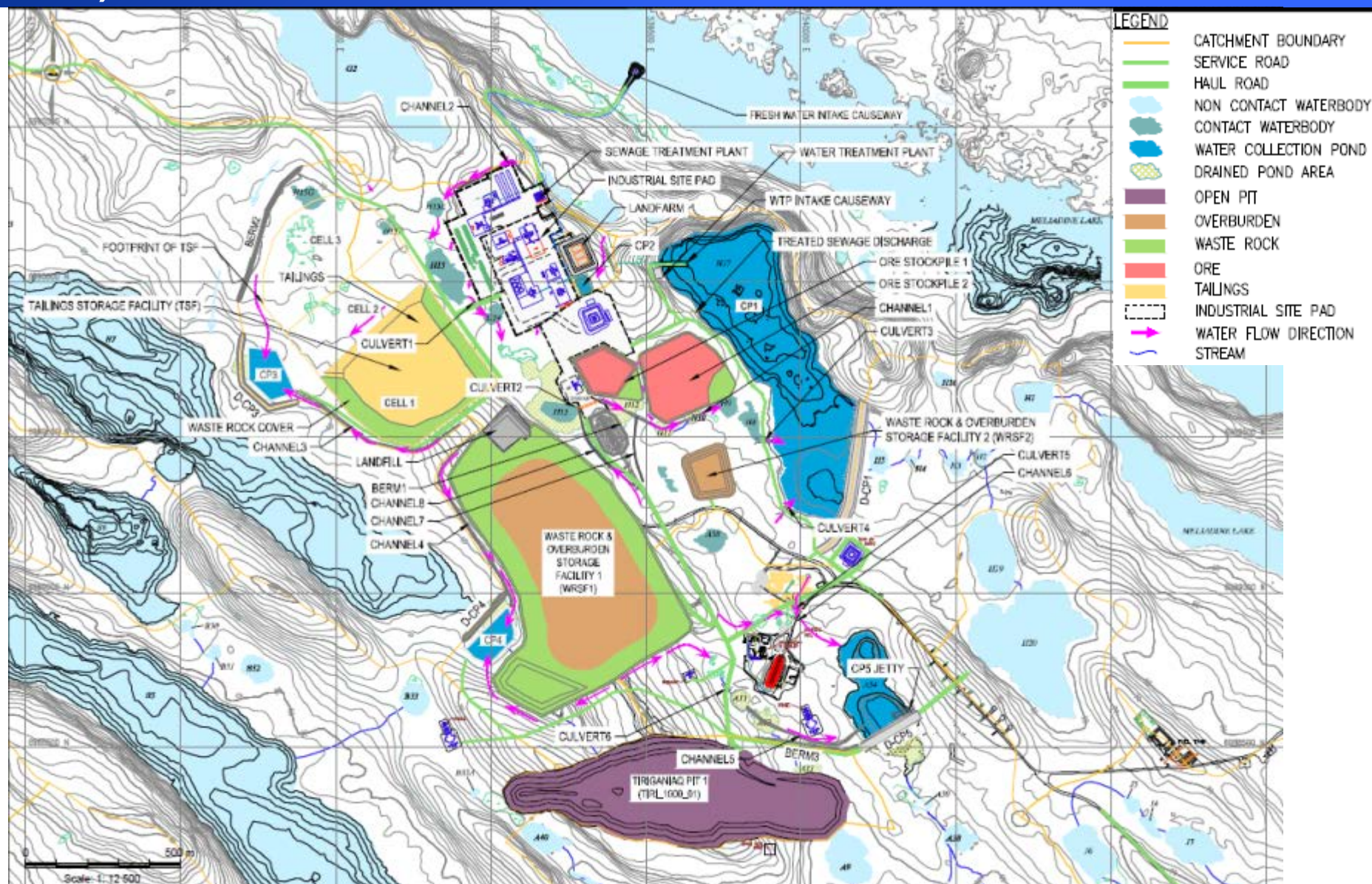
AGNICO EAGLE



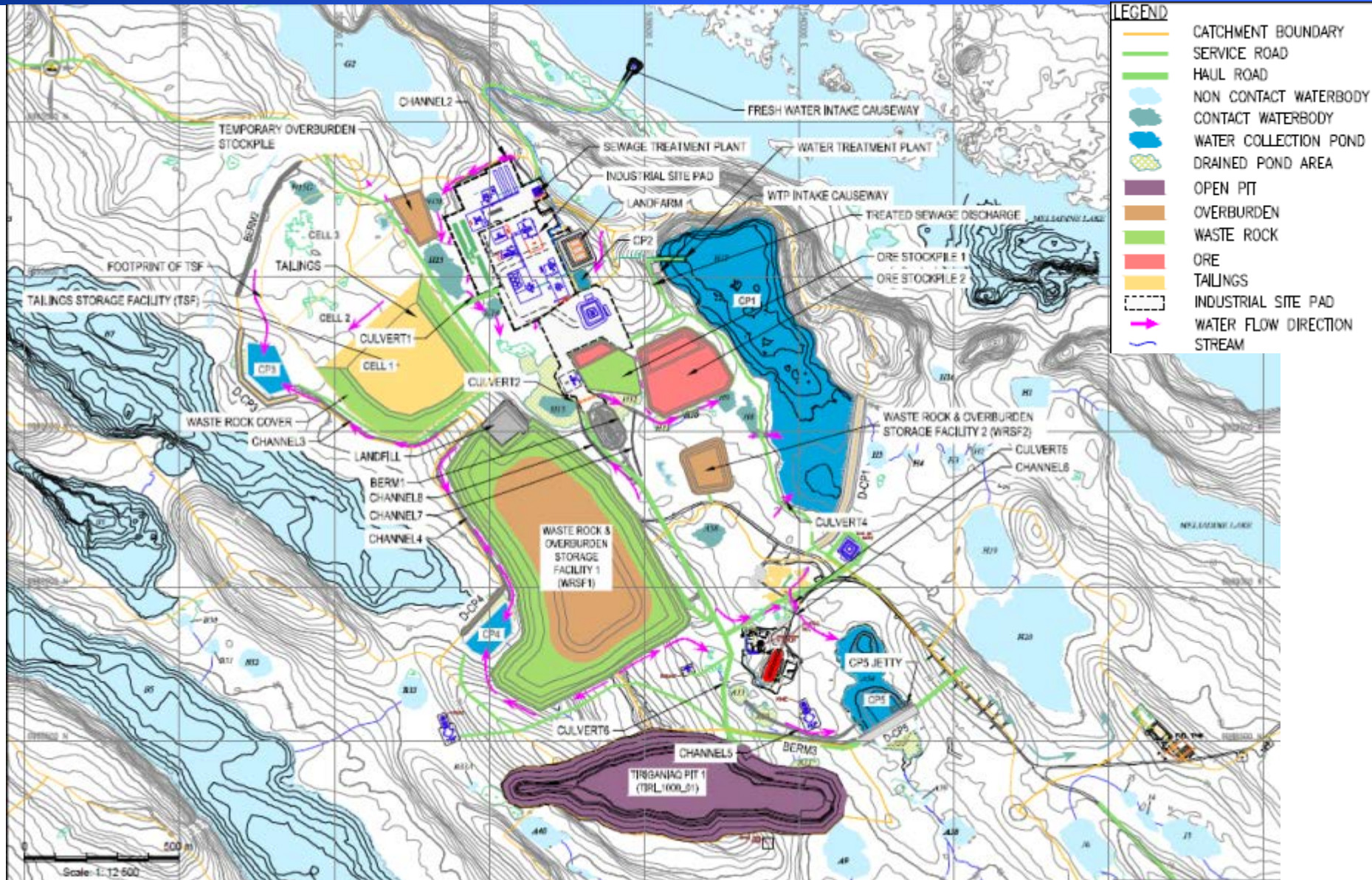
PROJECT APPLICATION – SITE LAYOUT (YEAR 2; 2021)



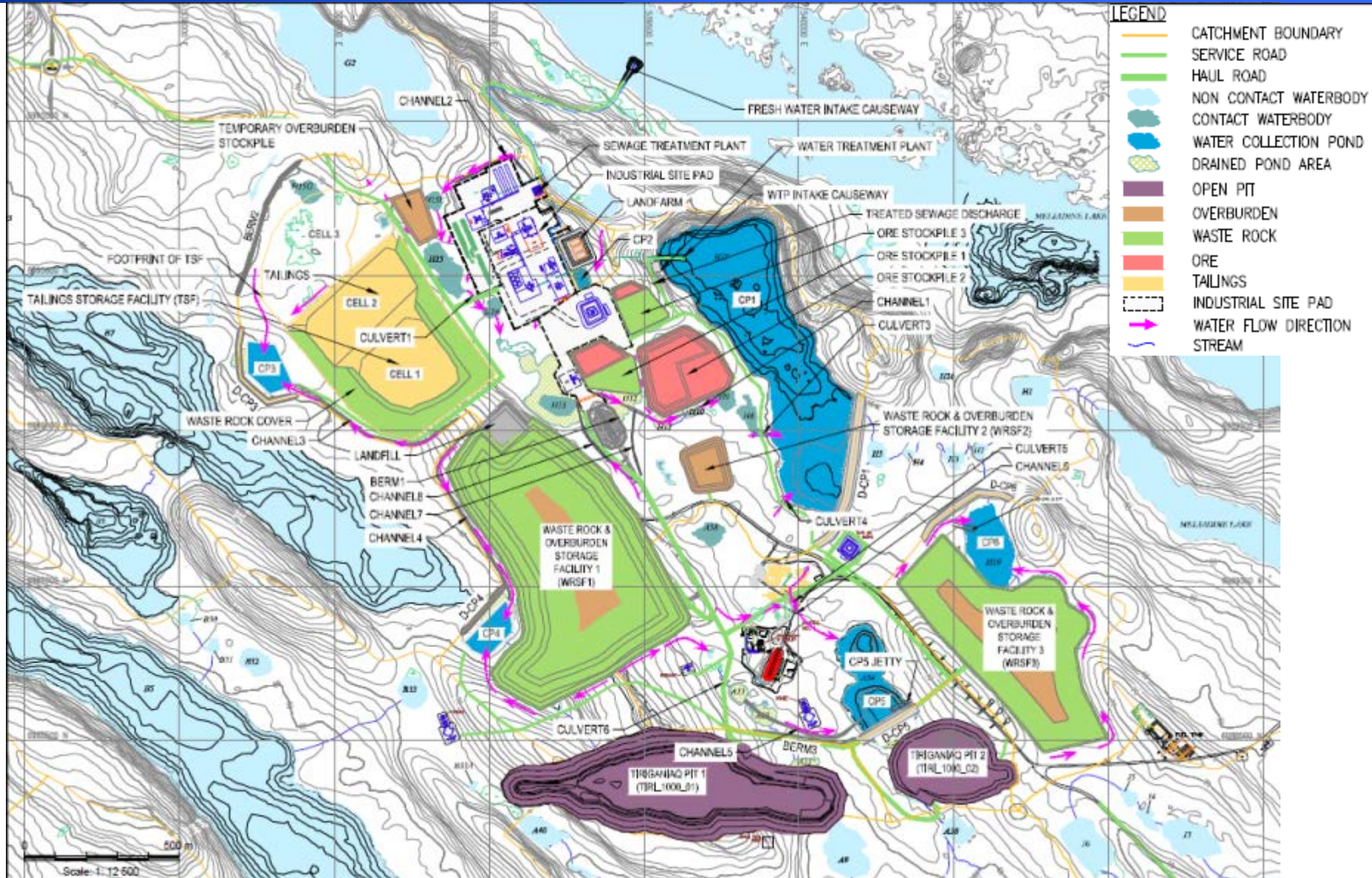
AGNICO EAGLE



PROJECT APPLICATION – SITE LAYOUT (YEAR 3; 2022)



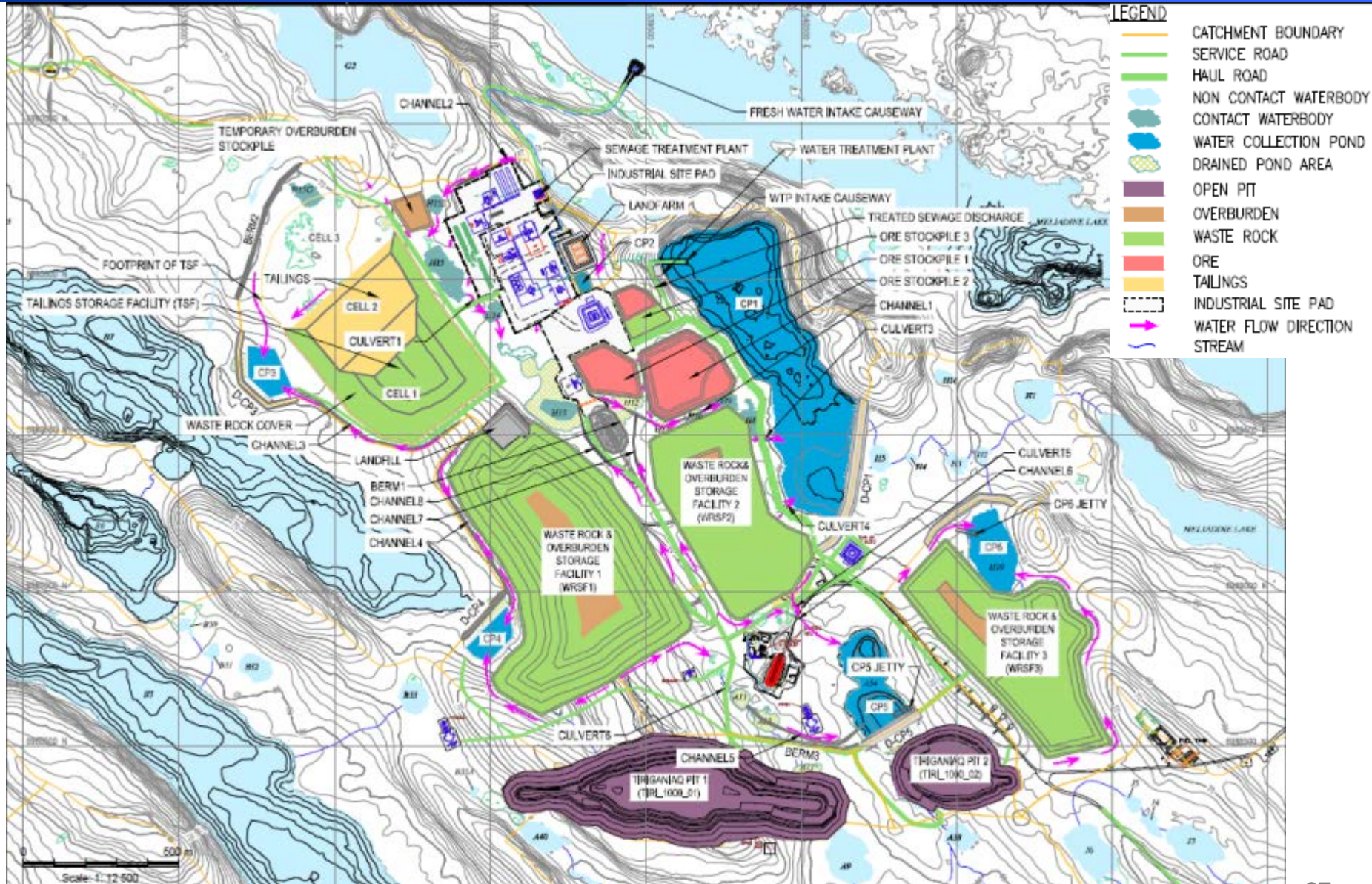
PROJECT APPLICATION – SITE LAYOUT (YEAR 4; 2023)



PROJECT APPLICATION – SITE LAYOUT (YEAR 5; 2024)



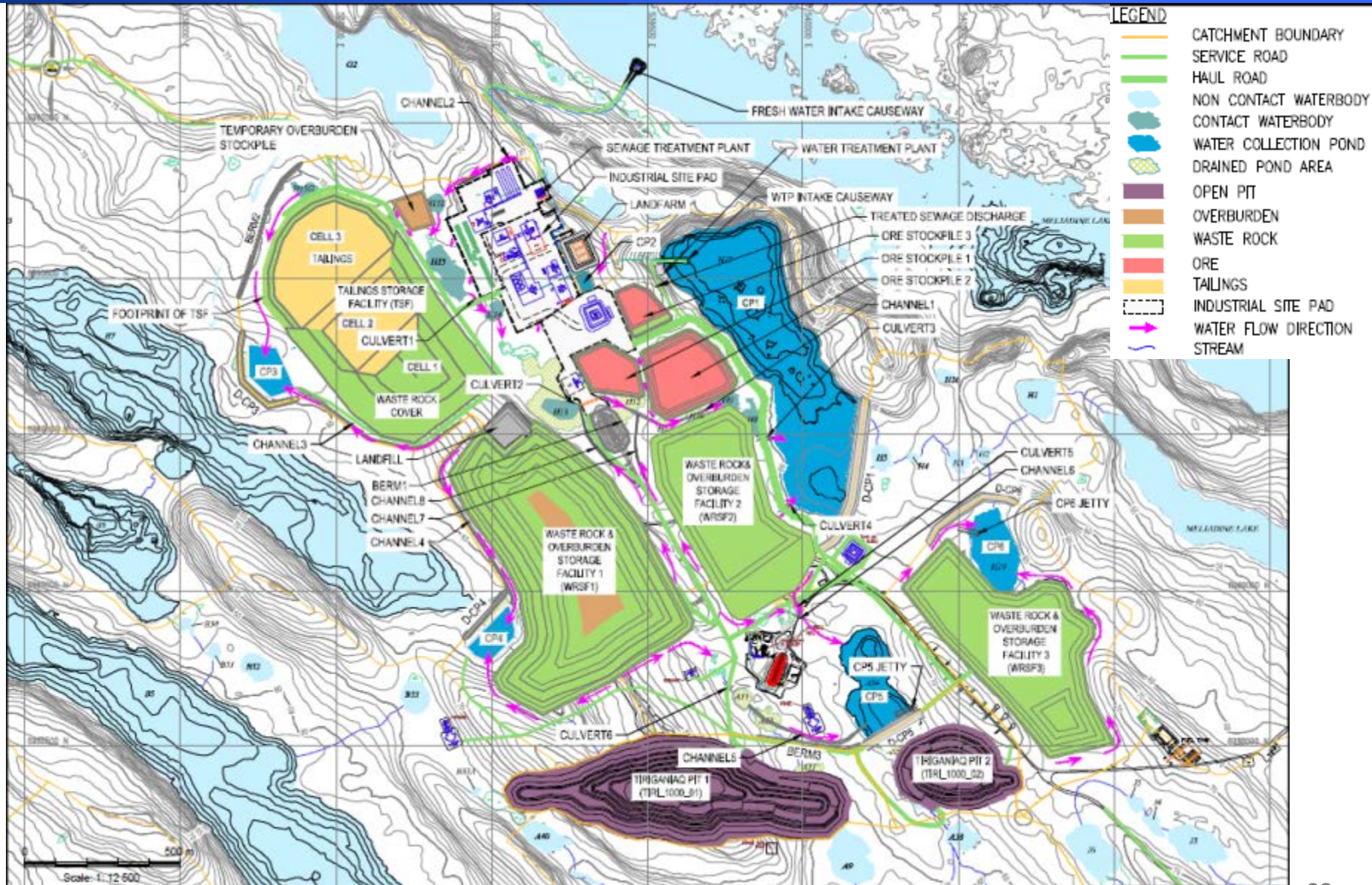
AGNICO EAGLE



PROJECT APPLICATION – SITE LAYOUT (YEAR 6; 2025)



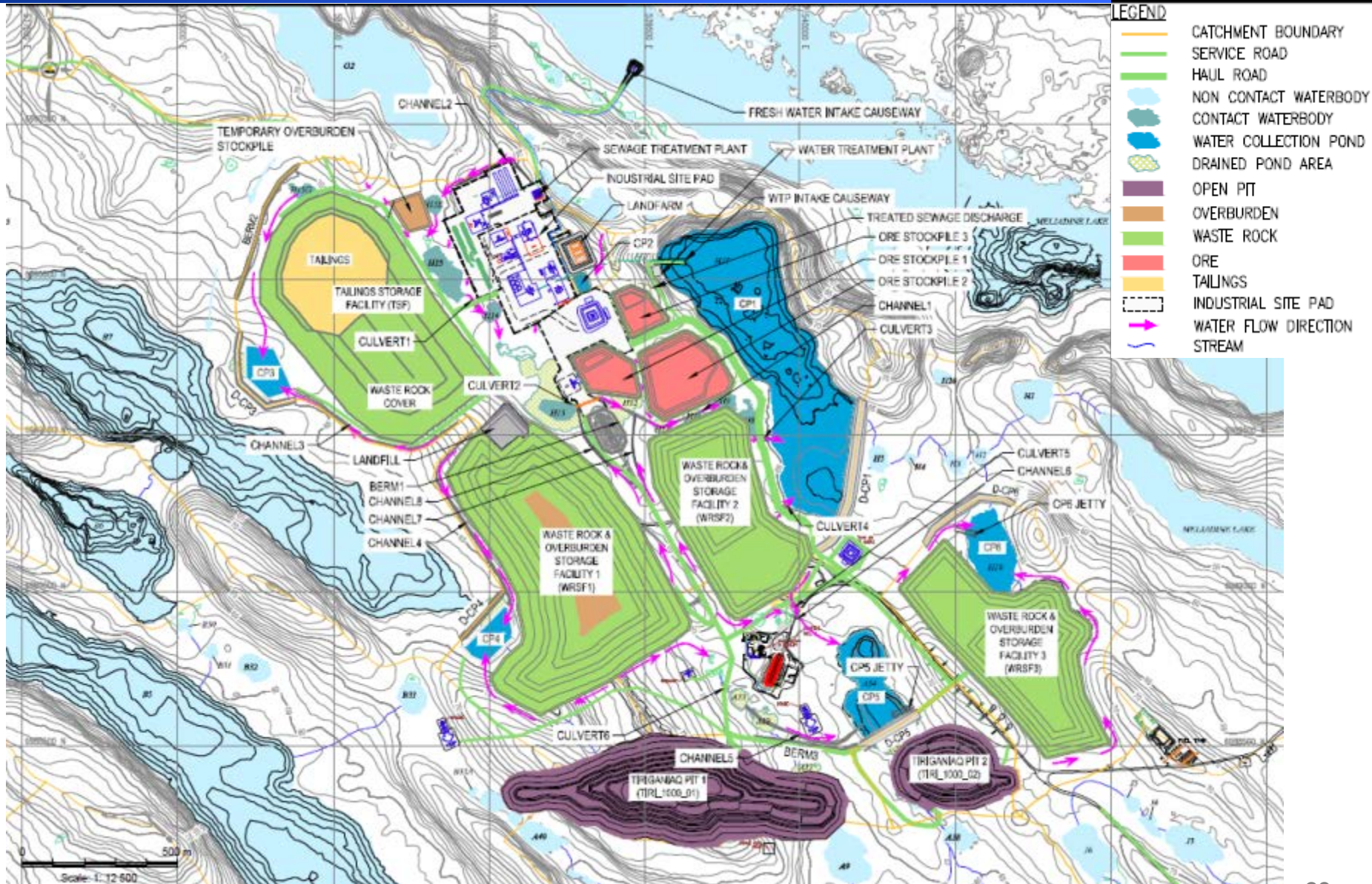
AGNICO EAGLE



PROJECT APPLICATION – SITE LAYOUT (YEAR 7; 2026)



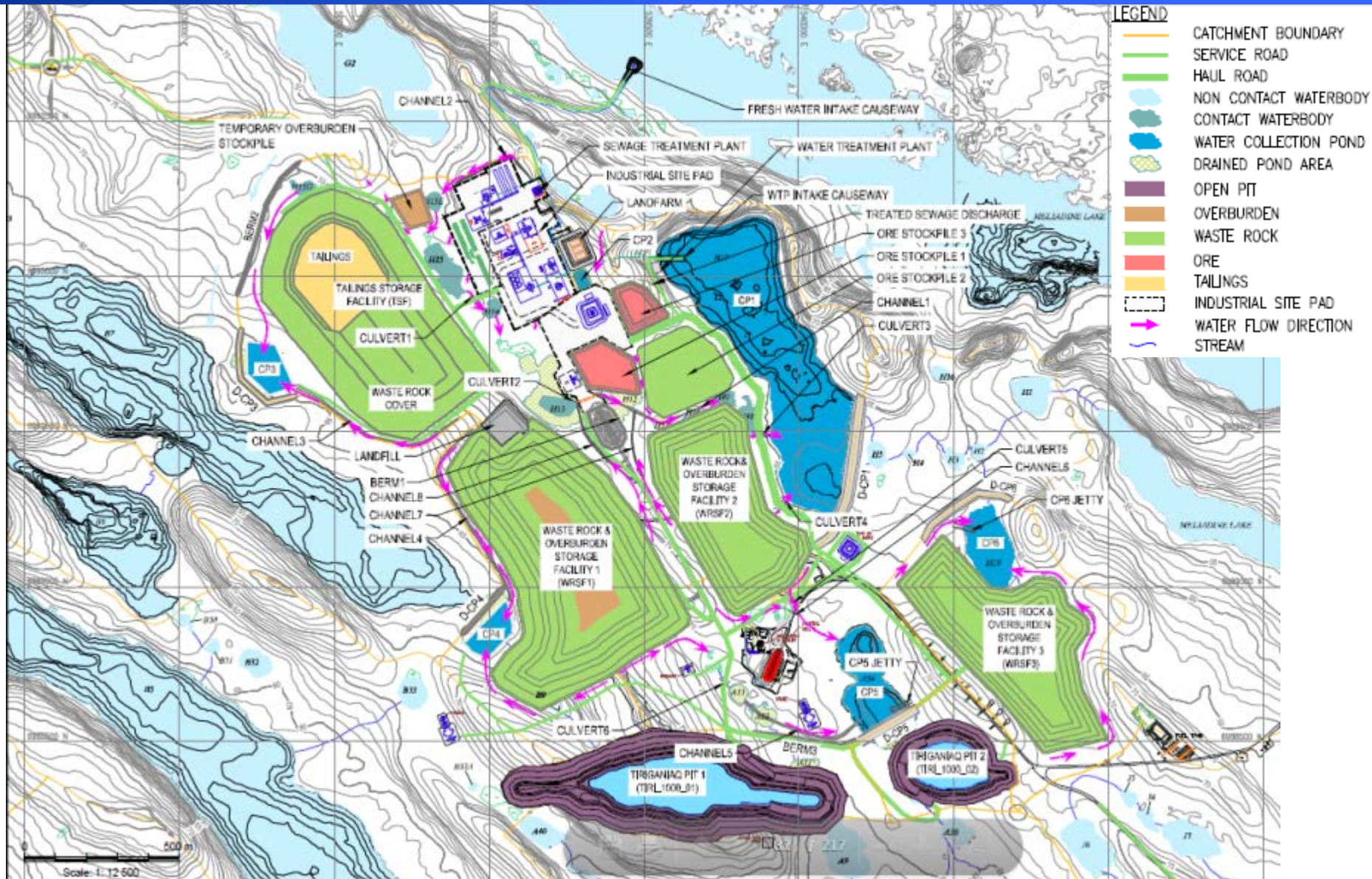
AGNICO EAGLE



PROJECT APPLICATION – SITE LAYOUT (YEAR 8; 2027)



AGNICO EAGLE



MITIGATION, MANAGEMENT, AND MONITORING PLANS

Management

- Pre-Development/Pre-Construction
- Construction and Operations
 - *Water Management*
 - *Waste Management*
 - *Operational Management*
- Monitoring
- Reclamation and Closure



Management Plans Included in Type A Water Licence Application

• Mine Plan	• Incineration Management Plan
• Environmental Management and Protection Plan	• Hazardous Materials Management Plan
• Water Management Plan	• Explosives Management Plan
• Ore Storage Management Plan	• Risk Management and Emergency Response Plan
• Mine Waste Management Plan	• Spill Contingency Plan
• Roads Management Plan	• Preliminary Closure and Reclamation Plan
• Borrow Pits and Quarries Management Plan	• Aquatic Effects Monitoring Program (AEMP) Design Plan
• Landfill and Waste Management Plan	• Landfarm Management Plan
• Quality Assurance/Quality Control Plan	• Public Engagement and Consultation Baseline Report

Agnico Eagle is committed to operating in a safe, socially, and environmentally responsible manner in accordance with terms and conditions of the Type A Water Licence for:

- The collection, use, management, and reuse of water
- The collection, use, and management of waste
- Any discharges to the receiving environment

Agnico Eagle has in place a systematic adaptive management approach to decision making whereby operational practices can be adapted and adjusted as required to reduce or eliminate any unforeseen negative impacts throughout the life of the Project

Water Management

- Minimize potential impacts to the quantity and quality of surface water at the mine site.
- Contact water originating from affected areas on surface will be intercepted, diverted and collected within the various collection ponds.
- Construction to Operations (Year -5 to Year 8)
- Key Documents
 - *Water Management Plan*
 - *Mine Plan*
 - *Ore Storage Management Plan*
 - *Mine Waste Management Plan*

Waste Management Plan(s)

- The waste rock storage facilities (WRSF) and the tailings storage facility (TSF) were designed and to be operated to minimize the impact on the environment and to consider geotechnical and geochemical stability
- Waste will be managed through WRSF, TSF, landfarm, landfill, incineration and off-site facilities
- Construction to Operations (Year -5 to Year 8)
- Key Documents
 - *Mine Waste Management Plan*
 - *Ore Storage Management Plan*
 - *Water Management Plan*
 - *Landfill and Waste Management Plan*
 - *Hazardous Materials Management Plan*
 - *Landfarm Management Plan*

Operational Management

- Considers design, operations, production, and environmental management of the mining and milling facilities
- Considers design, operations, and overall management of associated facilities, such as waste rock, overburden, ore and tailings storage and management
- Year 1 to Year 8
- Key Documents
 - *Mine Plan*
 - *Risk Management and Emergency Response Plan*
 - *Spill Contingency Plan*
 - *Roads Management Plan*
 - *Hazardous Materials Management Plan*
 - *Explosives Management Plan*

Environmental Protection and Monitoring Plan (EMPP)

- Regulated Monitoring
- Verification Monitoring
- General Monitoring
- Aquatic Effects Monitoring Program

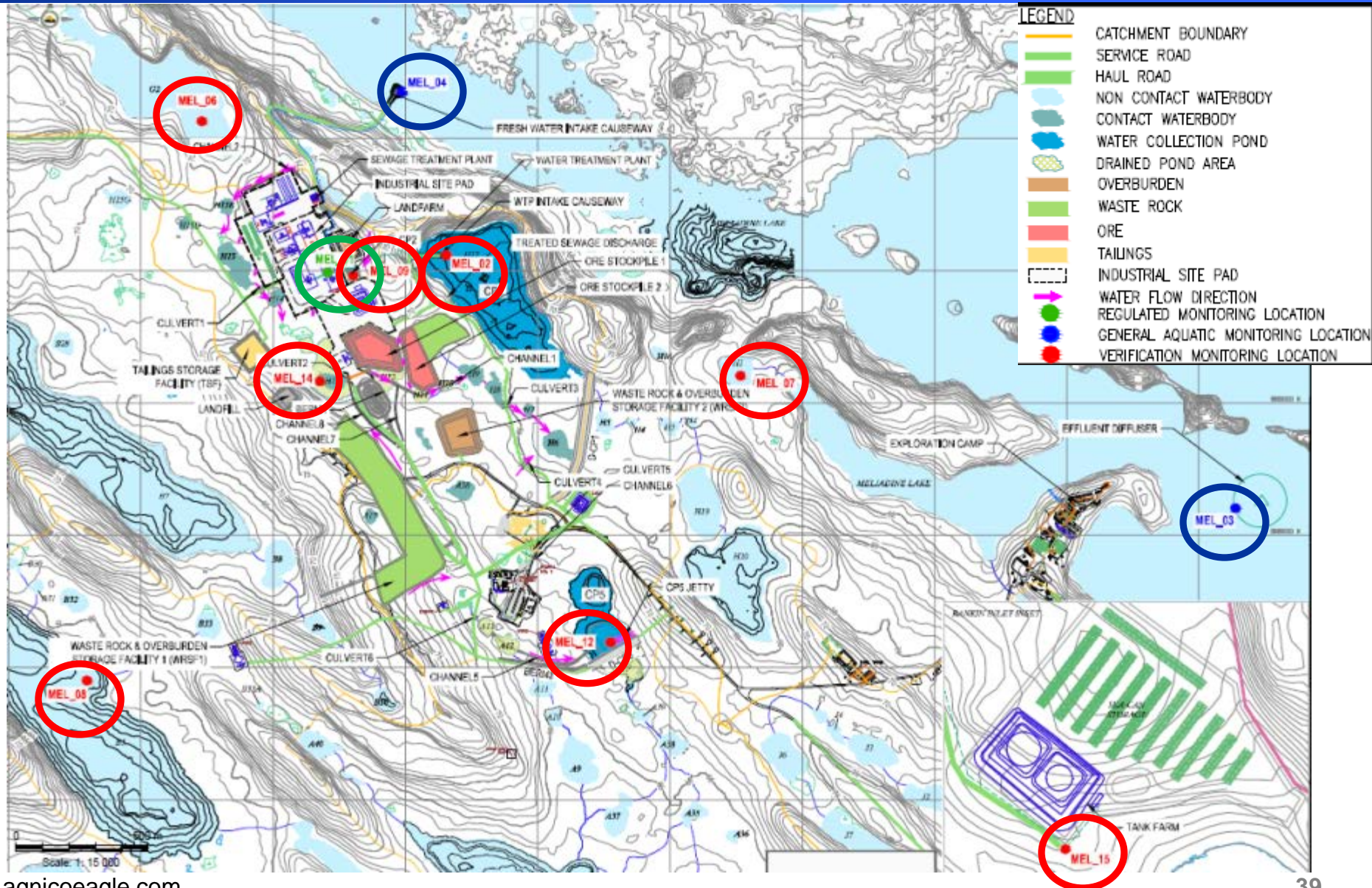
Quality Assurance/Quality Control Plan

- Field sampling equipment, methods, laboratory, and data requirements

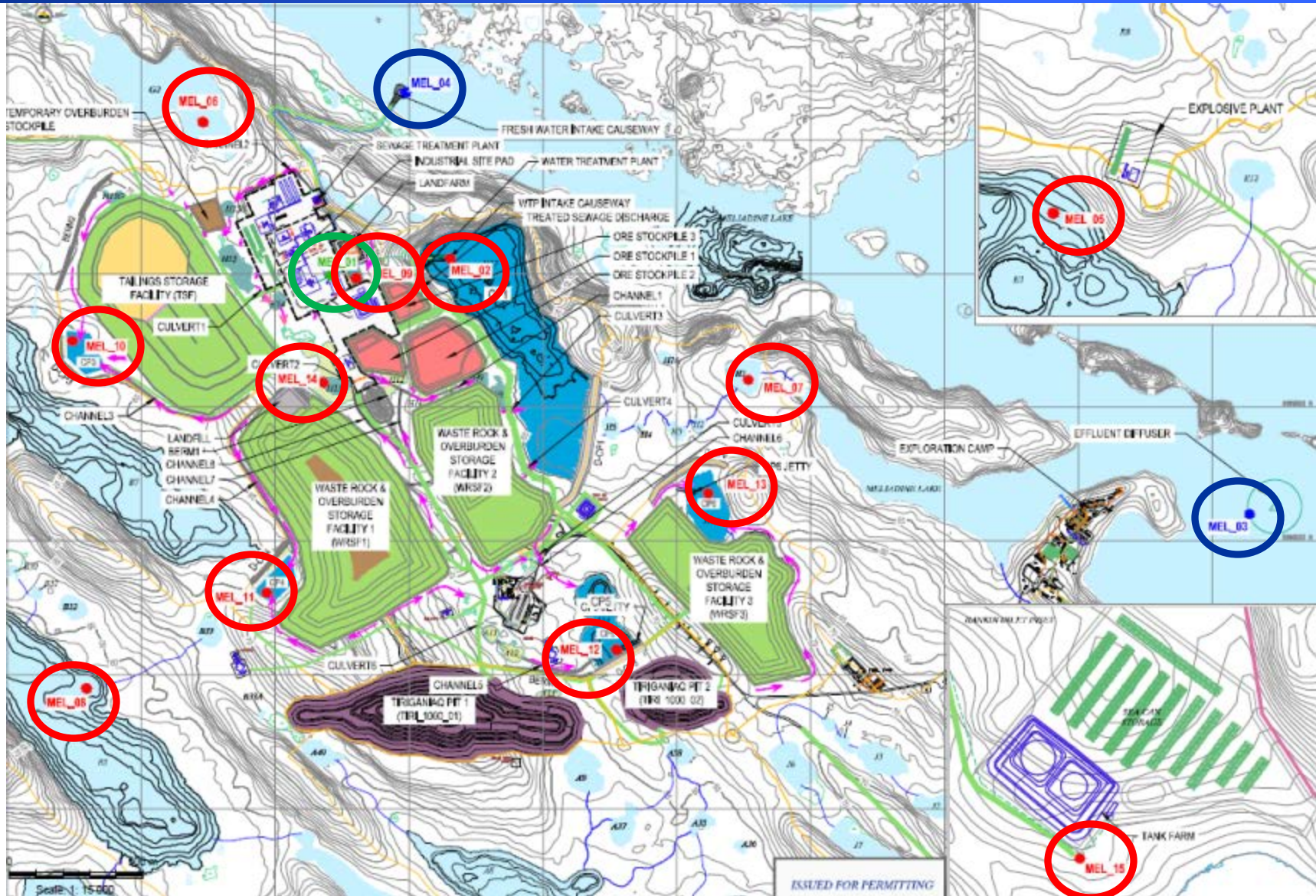
PROPOSED MONITORING DURING CONSTRUCTION



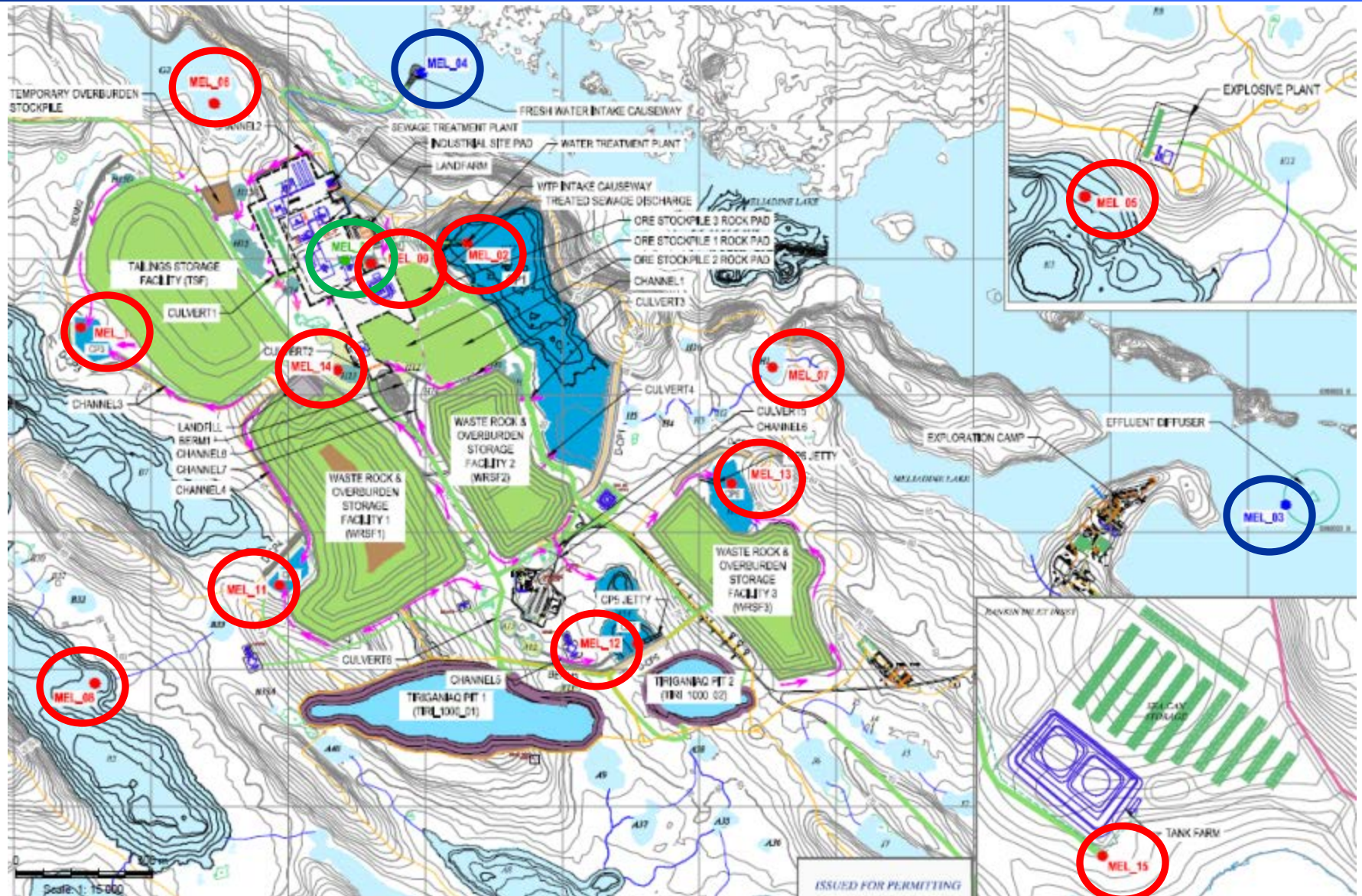
AGNICO EAGLE



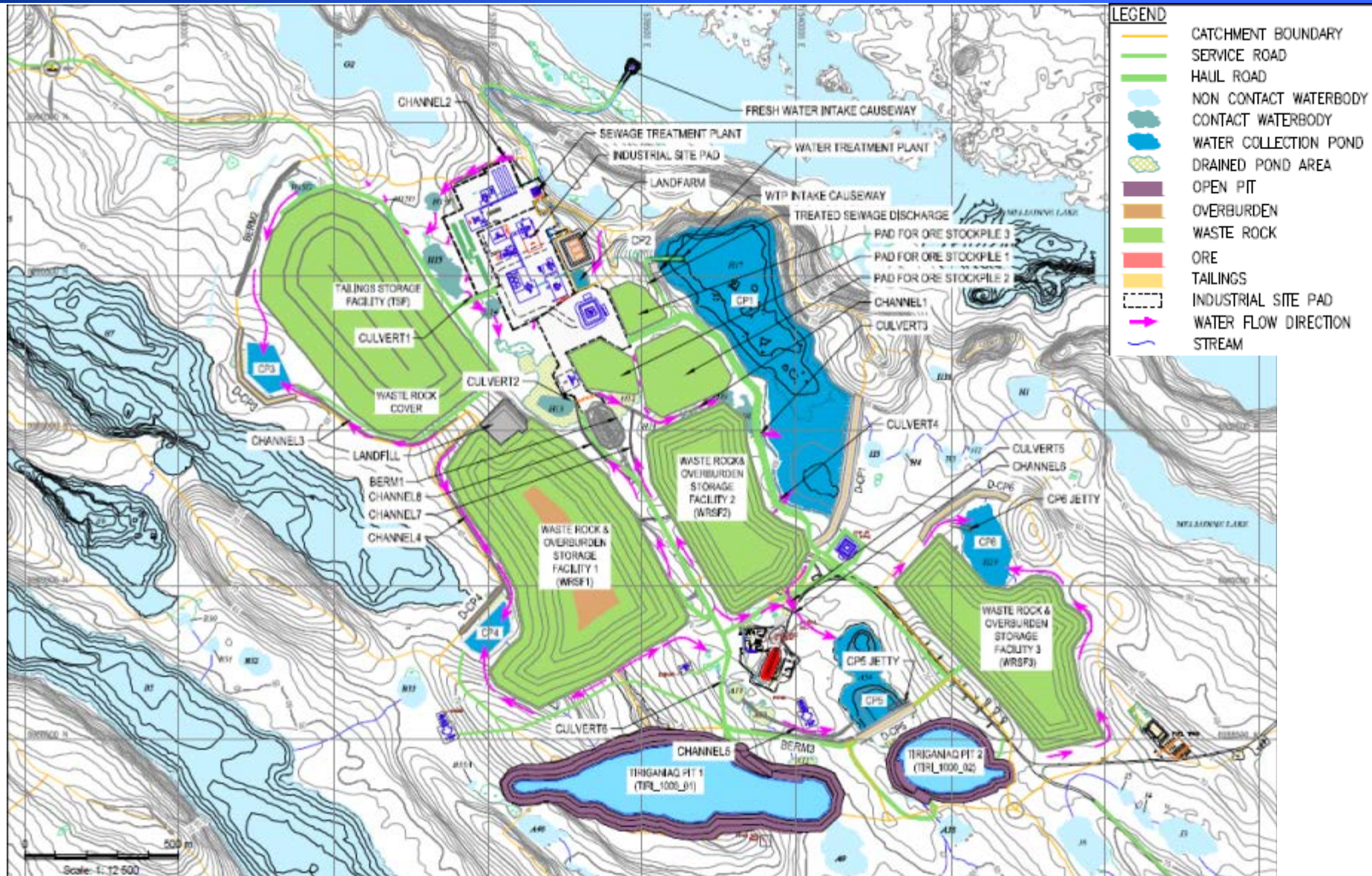
PROPOSED MONITORING DURING OPERATION



PROPOSED MONITORING DURING CLOSURE & POST CLOSURE



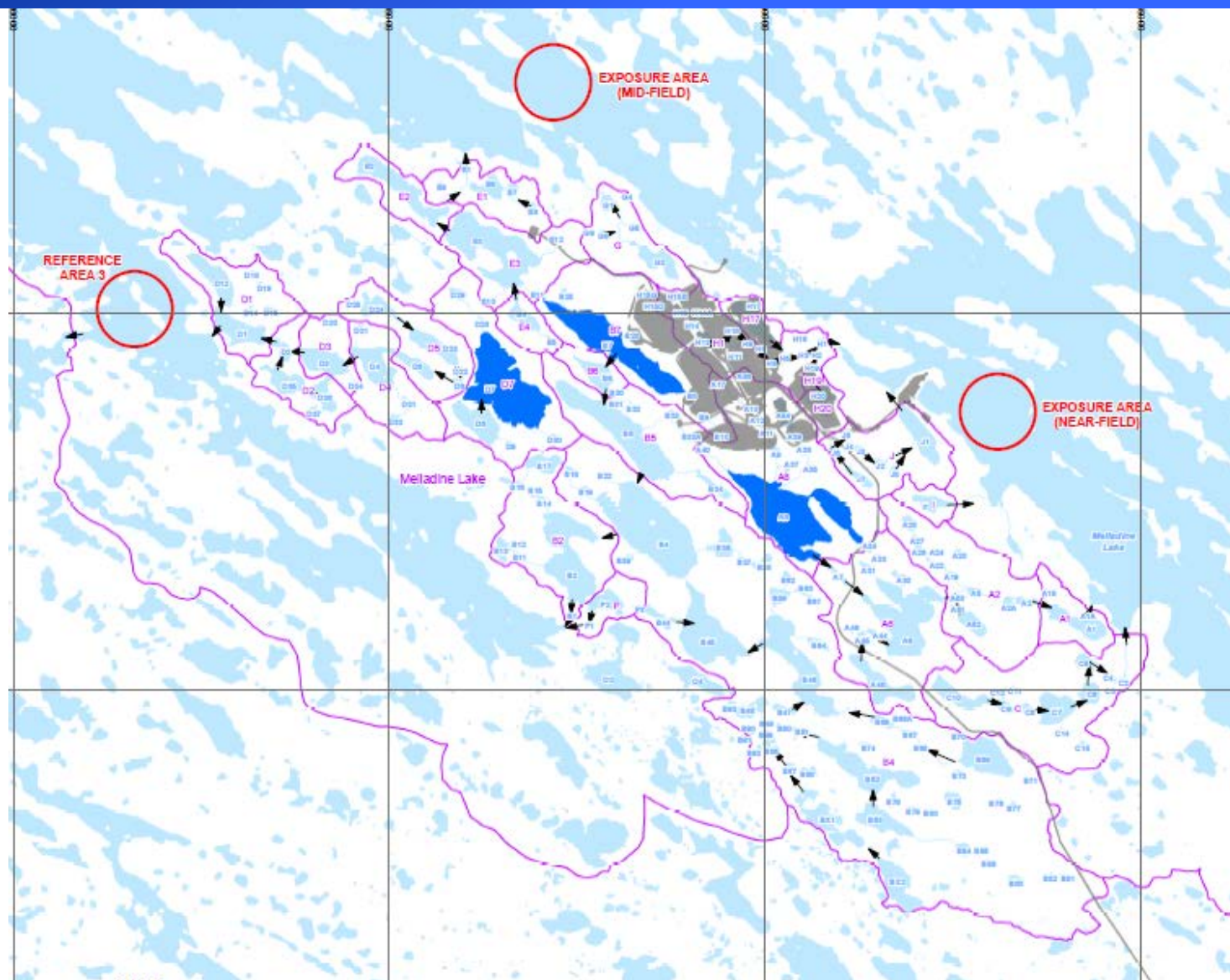
DETAILED SCOPE – SITE LAYOUT (YEAR 9)



AQUATIC EFFECTS MONITORING PROGRAM



AGNICO EAGLE

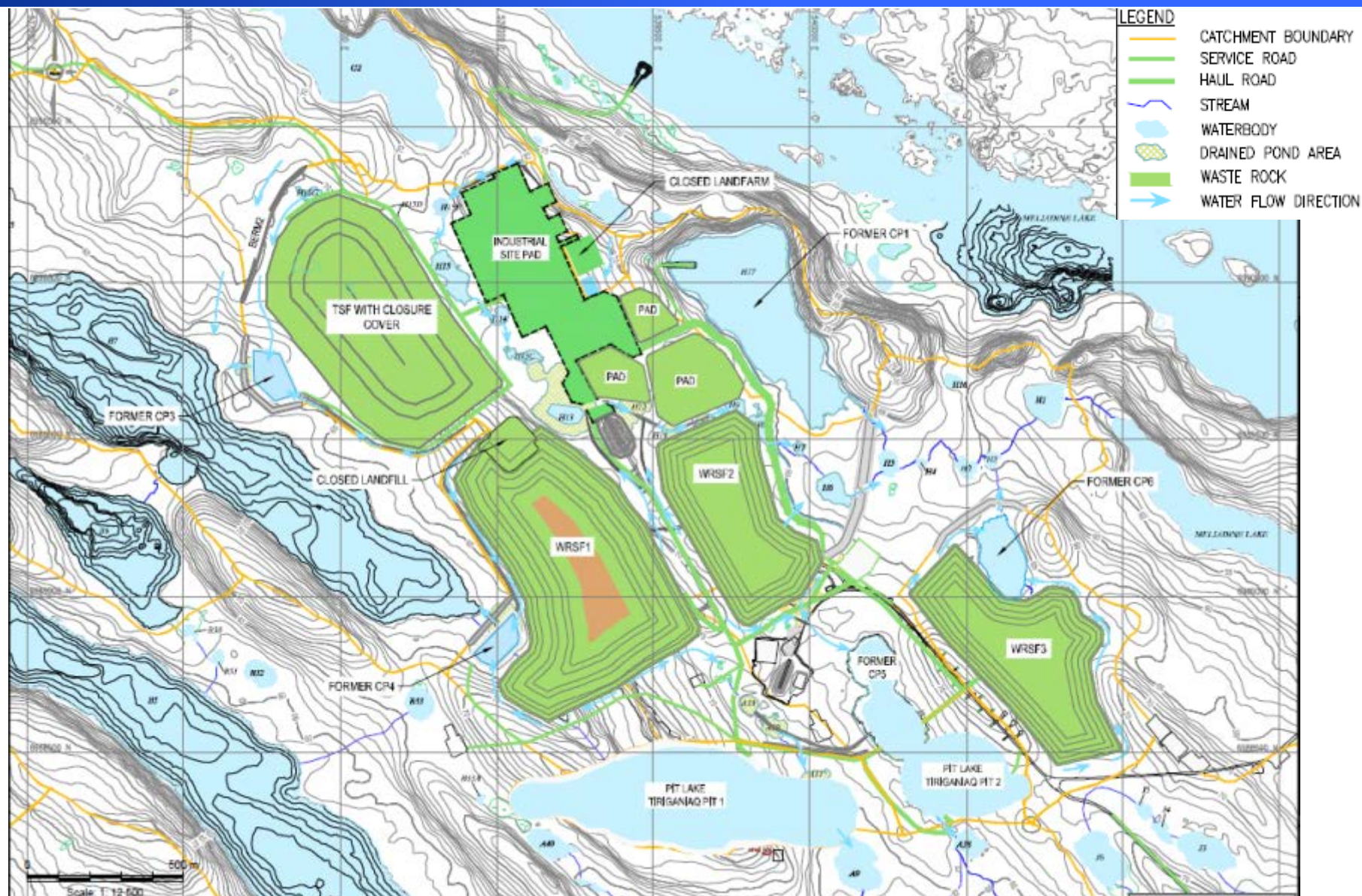


CLOSURE AND RECLAMATION

SITE LAYOUT AFTER CLOSURE



AGNICO EAGLE



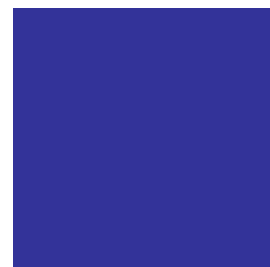
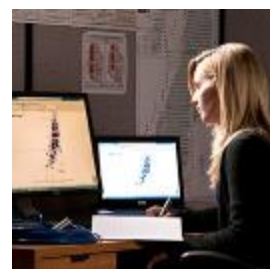
Reclamation and Closure Plan

- Preliminary Closure and Reclamation Plan
- Temporary, Progressive, and Final Closure
- Final Closure
 - *3 Year Period*
 - *Year 14 to 16*
- Security
 - *Covers all Project facilities*
 - *Prepared using RECLAIM Version 7.0, March 2014*

Summary

- **Progressive Reclamation Stage (Years 1 through 8)**
 - *initial placement of the cover material over the tailings surface of the TSF. Reclamation of the open pits and underground mining will start in Year 8*
- **Closure Stage (Closure years 1 through 3)**
 - *active decommissioning of major facilities and active flooding of the open pits. Active care, maintenance, and monitoring for the decommissioned and remaining facilities throughout this stage*
- **Post-Closure Stage (Closure Year 4 and onwards)**
 - *continued monitoring and maintenance*

- It was agreed by INAC, KIA and AEM that an amount of \$49,554,667 Million dollars would represent a sufficient quantum of security that could be recommended to the board.
- In addition to this, INAC and KIA are working on a Security Management Agreement (SMA) to eliminate over bonding, whereby both parties would hold a 50-50 split of the total amount of security.



Trading Symbol:
AEM on TSX & NYSE

Investor Relations:
416-847-8665
info@agnicoeagle.com

agnicoeagle.com