



## APPENDIX A1

P-Area DP1-A, DP1-B, DP2-A and DP3-A



*Photograph 23: DP1-B, Upstream Slope of Access Road along West Side of P1, Looking North towards Snow Melt Pond (20 September 2017)*



*Photograph 24: DP1-B Cracking Observed in Crest of Jetty for Evaporator #2*



## APPENDIX A1

P-Area DP1-A, DP1-B, DP2-A and DP3-A



*Photograph 25: DP1-B, Cracking Observed (3 to 10 cm wide) in Jetty for Evaporator #1*



*Photograph 26: P1 Till Dividing Berm, Looking East (20 September 2017)*



## APPENDIX A1

### P-Area DP1-A, DP1-B, DP2-A and DP3-A



*Photograph 27: P1 Till Dividing Berm, Erosion and Cracking Observed, Looking East near Intersection with DP1-B (Station 0+420)*



*Photograph 28: P1 Till Dividing Berm, Looking West (20 September 2017)*

\\golder.gds\gal\burnaby\final\2016\3 proj\1660296 agnico\_provide engineering s\_nunavu\1660296-024-r-rev0-3000\appendix a\1 - pareal\pond 1 appendix.docx



## APPENDIX A1

### P-Area, DP2-A



*Photograph 29: DP2-A, Upstream Slope of West End of Dike, Looking East (20 September 2017)*



*Photograph 30: DP2-A, Upstream Slope near Station 0+025, Looking East. Finer Grained Material on Slope Where Historic Slump was Remediated (20 September 2017)*



## APPENDIX A1

### P-Area, DP2-A



*Photograph 31: DP2-A, Upstream Slope near Station 0+065, Looking West. Finer Grained Material on Slope Where Historic Slump was Remediated (20 September 2017)*



*Photograph 32: DP2-A, Cracking on Upstream Slope near Station 0+075 (20 September 2017)*



## APPENDIX A1

### P-Area, DP2-A



*Photograph 33: DP2-A, Cracking on Crest of Dike near Station 0+090, Looking East (20 September 2017)*



*Photograph 34: DP2-A, Crest of Dike near Station 0+070, Looking West (20 September 2017)*



## APPENDIX A1

### P-Area, DP2-A



*Photograph 35: DP2-A, Upstream Face of East End of Dike, Looking South, some Cracking Visible (20 September 2017)*



*Photograph 36: DP2-A, Upstream Face of West End of Dike, Looking South. Repair of Previous Sloughing of the Slope Visible, near Station 0+065 (20 September 2017)*



## APPENDIX A1

### P-Area, DP2-A



*Photograph 37: DP2-A, Downstream Slope Adjacent to Access Road, Looking West (20 September 2017)*



*Photograph 38: DP2-A, Downstream Slope Adjacent to Access Road, Looking East (20 September 2017)*

\\golder.gds\gal\burnaby\final\2016\3 proj\1660296 agnico\_provide engineering s\_nunavu\1660296-024-r-rev0-3000\appendix a\1 - para\pond 2 appendix.docx



## APPENDIX A1

### P-Area, DP3-A



*Photograph 39: DP3-A, Downstream Slope and Run-off and Seepage Collection Channel, Looking West from Saline Pond (19 September 2017)*



*Photograph 40: DP3-A, Downstream Slope near Station 0+300, Looking Southwest. Saline Pond Berm to Left (19 September 2017)*

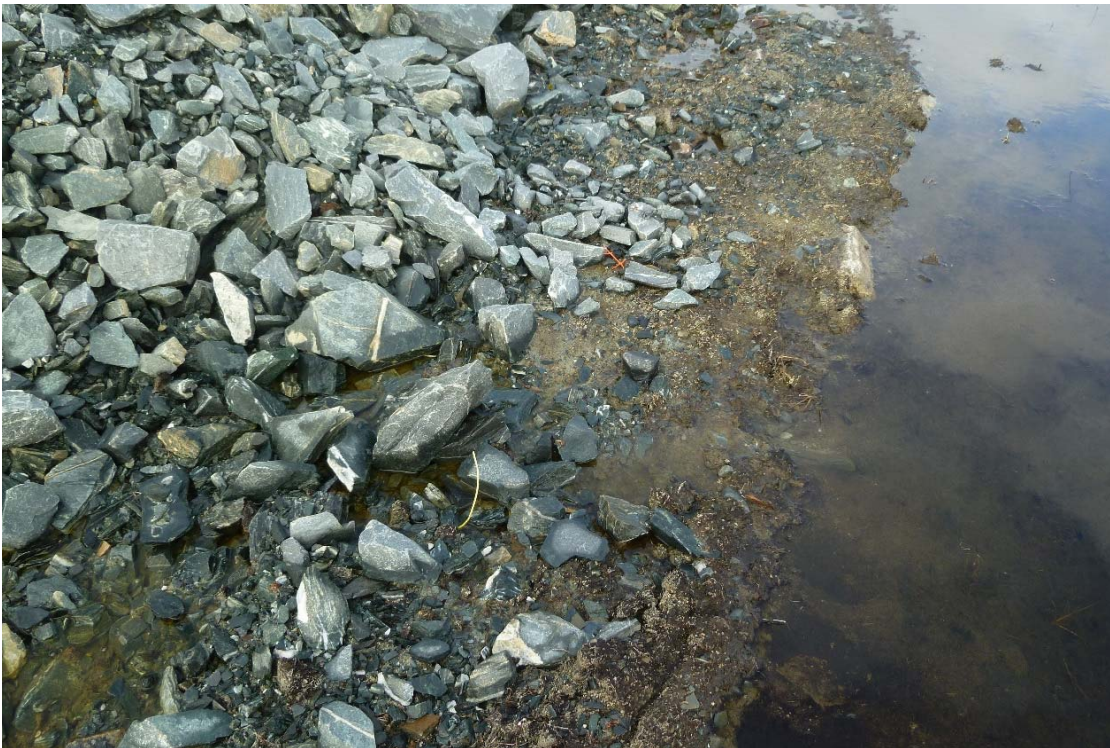


## APPENDIX A1

### P-Area, DP3-A



*Photograph 41: DP3-A, Downstream Face of Dike near Station 0+050, Looking North (19 September 2017)*



*Photograph 42: DP3-A, Visible Seepage from Toe of Dike near Station 0+050 (19 September 2017)*



## APPENDIX A1

### P-Area, DP3-A



*Photograph 43: DP3-A, Downstream Face near Station 0+220, Looking Northeast (19 September 2017)*



*Photograph 44: DP3-A Crest near Station 0+260, Looking West (19 September 2017)*



## APPENDIX A1

### P-Area, DP3-A



*Photograph 45: DP3-A, Upstream Slope near 0+170, Looking West (19 September 2017)*



*Photograph 46: DP3-A, Cracking Observed on Crest near Station 0+150, Looking Southwest (19 September 2017)*



## APPENDIX A1

### P-Area, DP3-A



*Photograph 47: DP3-A, Cracking Observed on Crest near Station 0+140 (19 September 2017)*



*Photograph 48: DP3-A, Upstream Slope, Looking Northeast near Station 0+050 (19 September 2017)*



## APPENDIX A1

### P-Area, DP3-A



*Photograph 49: DP3-A, Upstream Slope near Station 0+040, Looking West. (19 September 2017)*



*Photograph 50: DP3-A, Cracking Observed on Crest from Station 0+000 to 0+050, Looking West (19 September 2017)*

\\golder.gds\gal\burnaby\final\2016\3 proj\1660296 agnico\_provide engineering s\_nunavu\1660296-024-r-rev0-3000\appendix a\1 - pareal\pond 3 appendix.docx



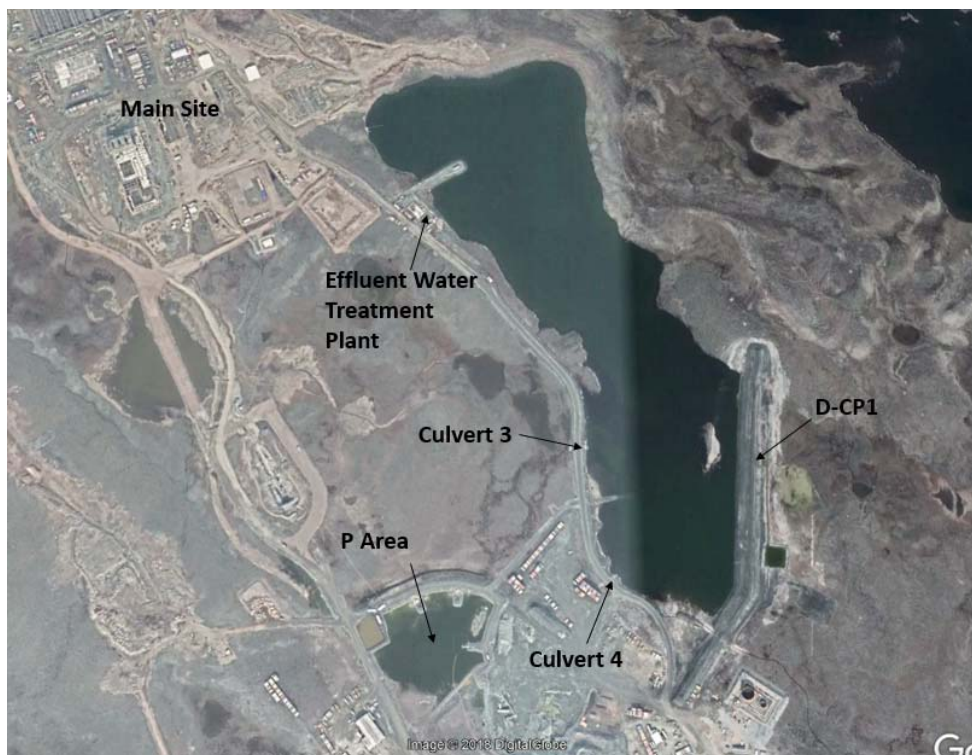
# **APPENDIX A 2**

**Permanent Water Management Facilities: D-CP1, D-CP5, Channel 5, Berm 3, Saline Pond, and Channel 2**



## APPENDIX A2

### D-CP1



*Photograph 1: Overview of D-CP1, Google Earth Image (20 August 2017)*



*Photograph 2: D-CP1, Water Pipeline Ramp Upstream of the Dike near Station 1+140, Looking West. Sand is Susceptible to Erosion (19 September 2017)*



## APPENDIX A2

### D-CP1



*Photograph 3: D-CP1 - Upstream Slope near Station 1+140, Looking Northeast (19 September 2017)*



*Photograph 4: D-CP1, Cracking on Upstream Bench Crest near Station 1+150, Looking Northeast (19 September 2017)*



## APPENDIX A2

### D-CP1



*Photograph 5: D-CP1, Cracking along Upstream Bench Crest near Station 1+225, Looking North (19 September 2017)*



*Photograph 6: D-CP1, Cracking on Upstream Slope near Station 1+270, Looking North (19 September 2017)*



## APPENDIX A2

### D-CP1



*Photograph 7: D-CP1, Upstream Bench Crest and Upstream Slope near Station 1+285, Looking South (19 September 2017)*



*Photograph 8: D-CP1, Cracking along Upstream Bench Crest near Station 1+450, Looking South (19 September 2017)*



## APPENDIX A2

### D-CP1



*Photograph 9: D-CP1, Crack (approximately 2 to 3 cm wide) on Upstream Bench near Station 1+435 (19 September 2017)*



## APPENDIX A2

### D-CP1



*Photograph 10: D-CP1, Small Settlement/depression near Upstream Toe near Station 1+500, Looking South (19 September 2017)*



*Photograph 11: D-CP1, Upstream Slope Near Station 1+525, Looking South (19 September 2017)*



## APPENDIX A2

### D-CP1



*Photograph 12: D-CP1, Crest Looking South near Station 1+450 (19 September 2017)*

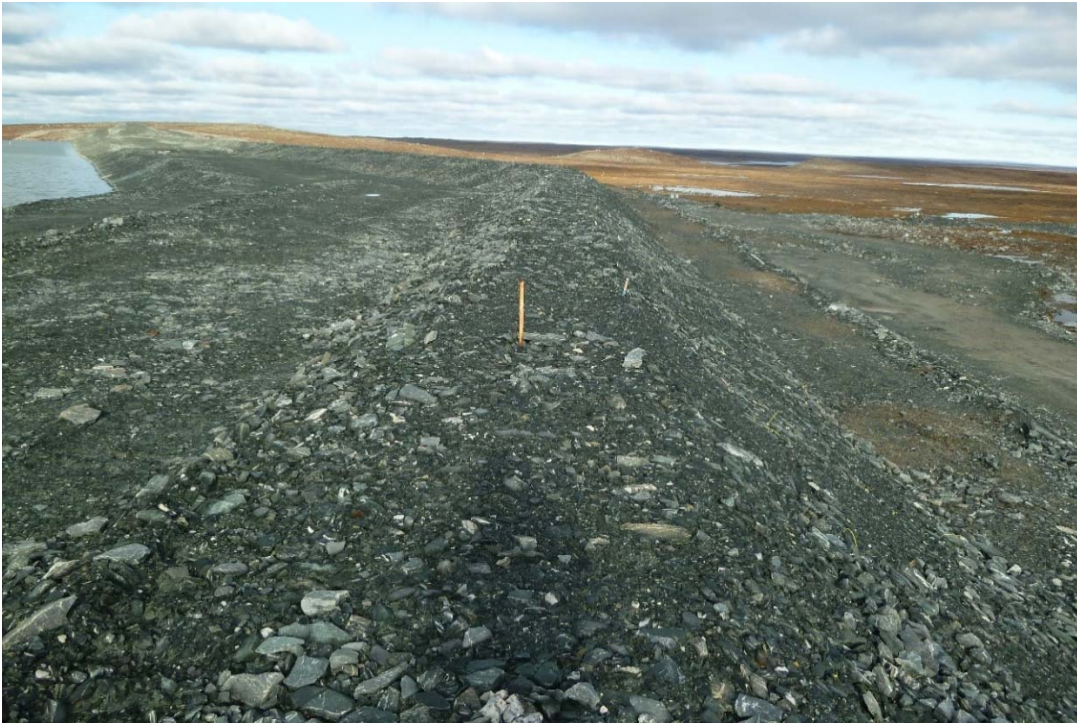


*Photograph 13: D-CP1, Crest and View of Downstream Sump Looking Northeast near Station 1+230 (19 September 2017)*



## APPENDIX A2

### D-CP1



*Photograph 14: D-CP1, Overview of Crest near Station 1+150, and Looking Northeast (19 September 2017)*



*Photograph 15: D-CP1, Overview of Crest near Station 1+000, and Looking Northeast (19 September 2017)*



## APPENDIX A2

### D-CP1



*Photograph 16: D-CP1, Downstream Slope and North Abutment near Station 1+525, Looking North (19 September 2017)*



*Photograph 17: D-CP1, Downstream Slope near Station 1+450, and Looking South (19 September 2017)*