



APPENDIX A4

Waste Rock and Ore Storage



Photograph 9: Waste Rock Storage pile, Top of Pile, Safety Berms in Place (21 September 2017)

\\golder.gds\gal\burnaby\final\2016\3 proj\1660296 agnico_provide engineering s_nunavu\1660296-024-r-rev0-3000\appendix a\4 - ore and wr piles\4- wr and ore storage piles appendix.docx



APPENDIX A 5

Industrial Pad and Other Site Facilities: Landfarm, Effluent Water Treatment Plant Pad and Intake, Underground Portal No. 1 and Underground Portal No. 2, Fuel Storage, Ventilation Intake Pad, Exploration Landfill, and Operation Landfill



APPENDIX A5

Industrial Pad



Photograph 1: Google Earth Image



Photograph 2: Industrial Pad, North End of West Slope, Looking North (20 September 2017)



APPENDIX A5

Industrial Pad



Photograph 3: Industrial Pad, North End of West Slope with Access Ramp in back Right of Photograph, Looking South (20 September 2017)

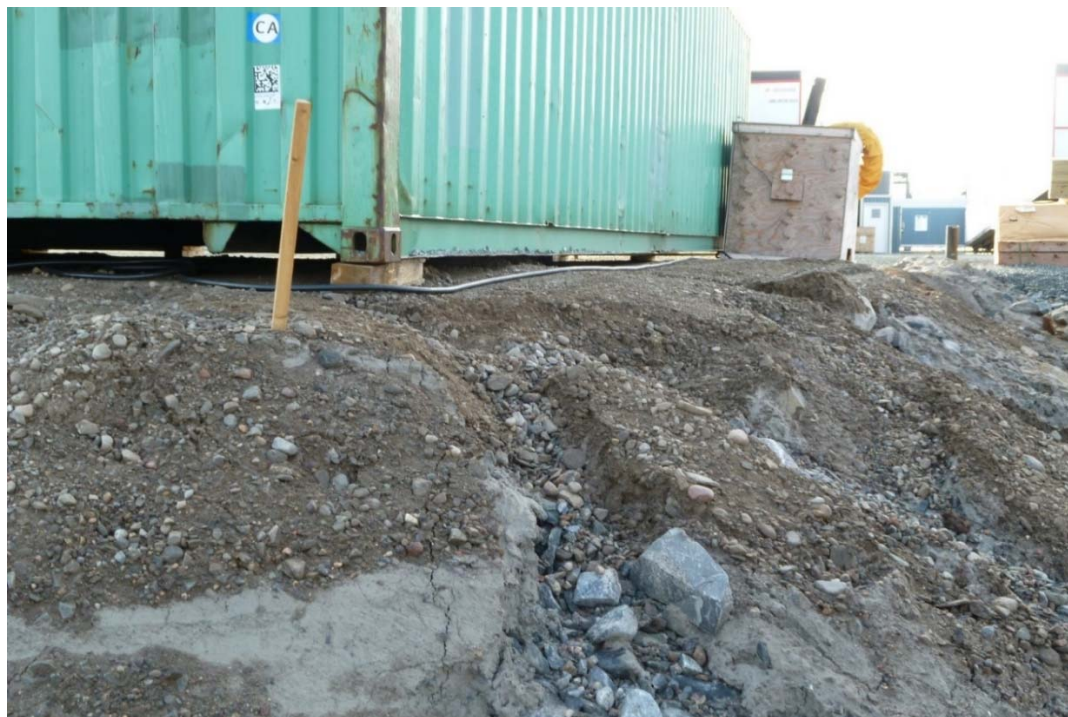


Photograph 4: Industrial Pad, Erosion of North Slope, Looking East (20 September 2017)



APPENDIX A5

Industrial Pad



Photograph 5: Industrial Pad, Erosion of North Slope (20 September 2017)



Photograph 6: Industrial Pad, East End of North Slope, Coarser Material, Less Erosion (20 September 2017)



APPENDIX A5

Industrial Pad



Photograph 7: Industrial Pad, North End of East Slope, Looking South (20 September 2017)



Photograph 8: Industrial Pad, Area at Northeast Corner of Site near Start of Water Intake Access Road, Looking South. (21 September 2017)



APPENDIX A5

Industrial Pad



Photograph 9: Industrial Pad, Quarry Area East of the Industrial Pad, Looking South (21 September 2017)



Photograph 10: Industrial Pad, Quarry Area East of Industrial Pad, Water Ponding and Ditching for Water Management, Looking South (21 September 2017)



APPENDIX A5

Industrial Pad



Photograph 11: Industrial Pad, Slopes of Pad Located West of Future Fuel Storage Area, Looking North (21 September 2017)



Photograph 12: Industrial Pad, Access Road at South End of Site, Culvert through Access is Exposed (21 September 2017)



APPENDIX A5

Industrial Pad



Photograph 13: Industrial Pad, Interior Slope north of Multi-services Building, Looking West (21 September 2017)



Photograph 14: Incinerator Pad, West Slope, Looking South. Variable Material Used for Pad Construction (21 September 2017)



APPENDIX A5

Industrial Pad



Photograph 15: Incinerator Pad, East Slope Looking South. Variable Material Used for Pad Construction. No Culvert Installed Through Access Road to Incinerator (21 September 2017)



Photograph 16: Future Fuel Storage for Powerhouse, Downstream Face of East Slope, Looking Northwest (21 September 2017)



APPENDIX A5

Industrial Pad



Photograph 17: Future Fuel Storage for Powerhouse, South and West Slopes, Looking Northeast (21 September 2017)

\\golder.gds\gal\burnaby\final\2016\3 proj\1660296 agnico_provide engineering s_nunavu\1660296-024-r-rev0-3000\appendix a\A5\1. industrial pad appendix.docx



APPENDIX A5

Landfarm



Photograph 18: Landfarm, East Slope, Looking South (20 September 2017)



Photograph 19: Landfarm, South Slope Facing West (20 September 2017)



APPENDIX A5

Landfarm



Photograph 20: Landfarm, South Corner Slope Facing North (20 September 2017)



Photograph 21: Landfarm, West Slope Facing North (20 September 2017)



APPENDIX A5

Landfarm



Photograph 22: Landfarm, North Slope Facing East from West Corner (20 September 2017)



Photograph 23: Landfarm, Overview of Interior from West Corner (20 September 2017)

\\golder.gds\gal\burnaby\final\2016\3 proj\1660296 agnico_provide engineering s_nunavu\1660296-024-r-rev0-3000\appendix a\A5\2. landfarm appendix.docx



APPENDIX A5

Effluent Water Treatment Plant Pad and Intake Causeway



Photograph 24: Overview of Effluent Water Treatment Plant Location. Google Earth Image (August 2017)



Photograph 25: Effluent Water Treatment Plant, South Slope of Pad, Looking North. Pipe Ramp Constructed with Sand that is Susceptible to Erosion (21 September 2017)



APPENDIX A5

Effluent Water Treatment Plant Pad and Intake Causeway



Photograph 26: Effluent Water Treatment Plant, East Slope of Pad, and Looking Southwest from Intake Causeway (21 September 2017)



Photograph 27: Effluent Water Treatment Plant, East Slope of Pad, Looking Southeast (21 September 2017)



APPENDIX A5

Effluent Water Treatment Plant Pad and Intake Causeway



Photograph 28: Effluent Water Treatment Plant, Crest of Pad above East Slope, Looking South (21 September 2017)



Photograph 29: Effluent Water Treatment Plant, Overview of Effluent Water Treatment Plant Intake Causeway, Looking North (21 September 2017)



APPENDIX A5

Effluent Water Treatment Plant Pad and Intake Causeway



Photograph 30: Effluent Water Treatment Plant, Crest and South Slope of Intake Causeway, Looking East (21 September 2017)



Photograph 31: Effluent Water Treatment Plant, North Slope of Intake Causeway, Looking West (21 September 2017)



APPENDIX A5

Effluent Water Treatment Plant Pad and Intake Causeway



Photograph 32: Effluent Water Treatment Plant, End of Intake Causeway, Looking Northeast (21 September 2017)

\\golder.gds\gal\burnaby\final\2016\3 proj\1660296 agnico_provide engineering s_nunavu\1660296-024-r-rev0-3000\appendix a\5\3. effluent water treatment plant appendix.docx



APPENDIX A5

Underground Portal No. 1



Photograph 34: Overview of Portal No. 1 and Portal No. 2 Locations. Google Earth Image (August 2017)



Photograph 35: Portal No. 1, Looking Northeast (21 September 2017)



APPENDIX A5

Underground Portal No. 1



Photograph 36: Portal No. 1, Looking North at Perimeter Berm (21 September 2017)



Photograph 37: Portal No. 1, looking Southwest at South Perimeter Berm and Rock Cut from Adjacent to Portal Entrance (21 September 2017)



APPENDIX A5

Underground Portal No. 1



Photograph 38: Portal No. 1, Looking Southwest at North Perimeter Berm and Rock Cut from Adjacent to Portal Entrance (21 September 2017)



Photograph 39: Portal No. 1, Looking Southwest at Rock Slopes (21 September 2017)

\\golder.gds\gal\burnaby\final\2016\3 proj\1660296 agnico_provide engineering s_nunavu\1660296-024-r-rev0-3000\appendix a\A5\4. portal #1 appendix.docx



APPENDIX A5

Underground Portal No. 2



Photograph 40: Portal No. 2, Looking South (21 September 2017)



Photograph 41: Portal No. 2, Closeup of Portal Entrance, Looking South (21 September 2017)



APPENDIX A5

Underground Portal No. 2



Photograph 42: Portal No. 2, East Perimeter Berm, Looking South (21 September 2017)



Photograph 43: Portal No. 2, East Perimeter Berm, Looking North (21 September 2017)



APPENDIX A5

Underground Portal No. 2



Photograph 44: Portal No. 2, East Rock Cut Face, Looking Southeast, and Some Evidence of Ravelling of Loose Rock onto the Rockfill Bench (21 September 2017)



Photograph 45: Portal No. 2, West Perimeter Rock Cut Face and Perimeter Berm, Looking West (21 September 2017)



APPENDIX A5

Underground Portal No. 2



Photograph 46: Portal No. 2, Opening in Perimeter Berm above South End of Portal Cut, Looking Northwest. No Water Management (21 September 2017)



Photograph 47: Portal No. 2, Water Poned Adjacent to the West Side of the Portal Cut, Looking North. No Water Management (21 September 2017)

\\golder.gds\gal\burnaby\final\2016\3 proj\1660296 agnico_provide engineering s_nunavu\1660296-024-r-rev0-3000\appendix a\A5\5. portal #2 appendix.docx



APPENDIX A5

New Fuel Storage Area



Photograph 48: Overview of New Fuel Storage Area Location. Google Earth Image (August 2017)



Photograph 49: New Fuel Tank Storage Area, Outer Slope of Northwest Berm, Looking Southwest (19 September 2017)



APPENDIX A5

New Fuel Storage Area



Photograph 50: New Fuel Tank Storage Area, Outer Slope of Northeast Berm, Looking Southeast (19 September 2017)



Photograph 51: New Fuel Tank Storage Area, Outer Slope of Southeast Berm, Looking Northeast (19 September 2017)



APPENDIX A5

New Fuel Storage Area



Photograph 52: New Fuel Tank Storage Area, Crest and Inside Slope of Northwest Berm, Looking Southwest (19 September 2017)



Photograph 53: New Fuel Tank Storage Area, Crest and Inside Slope of Northeast Berm, Looking Northwest (19 September 2017)



APPENDIX A5

New Fuel Storage Area



Photograph 54: New Fuel Tank Storage Area, Southwest Berm, Looking Southeast (19 September 2017)

\\golder.gds\gal\burnaby\final\2016\3 proj\1660296 agnico_provide engineering s_nunavu\1660296-024-r-rev0-3000\appendix a\A5\6. new fuel storage appendix.docx



APPENDIX A5

Ventilation Intake Pad



Photograph 55: Overview of Ventilation Intake Pad location. Google Earth Image (August 2017)



Photograph 56: Ventilation Intake Pad, West Slope, Looking East. Some Fine Grained Material used for Pad which may be Susceptible to Erosion (21 September 2017)



APPENDIX A5

Ventilation Intake Pad



Photograph 57: Ventilation Intake Pad, East Slope, Facing Southwest (21 September 2017)



Photograph 58: Ventilation Intake Pad, Southwest Crest and Slope, Looking Southeast. Sea-containers are Located Very Close to Crest (21 September 2017)

\\golder.gds\gal\burnaby\final\2016\3 proj\1660296 agnico_provide engineering s_nunavu\1660296-024-r-rev0-3000\appendix a\A5\7. ventilation intake pad appendix.docx



APPENDIX A5

Exploration Landfill



Photograph 59: Overview of the Location of the Exploration and Operation Landfills. Google Earth Image (August 2017)



Photograph 60: Overview of the Exploration Landfill Looking Northeast (19 September 2017)



APPENDIX A5

Exploration Landfill



Photograph 61: Exploration Landfill, Downstream Slope of West Berm, Looking North, Cracking Visible (19 September 2017)



Photograph 62: Exploration Landfill, Downstream Slope of North End of West Berm, Cracking Visible (19 September 2017)



APPENDIX A5

Exploration Landfill



Photograph 63: Exploration Landfill, Downstream Slope of North Berm, and Looking East from West Corner (19 September 2017)



Photograph 64: Exploration Landfill, Cracking on Downstream Slope of North Berm, Looking West (19 September 2017)



APPENDIX A5

Exploration Landfill



Photograph 65: Exploration Landfill, Cracking Mid Slope of East Berm, Looking North (19 September 2017)



Photograph 66: Exploration Landfill, Downstream Slope of East Berm, Looking North (19 September 2017)



APPENDIX A5

Exploration Landfill



Photograph 67: Exploration Landfill, Crest of East Berm, Looking North. Cracking and some Erosion Visible (19 September 2017)



Photograph 68: Exploration Landfill, Interior and Upstream Slopes of North Berm, Looking North (19 September 2017)

\\golder.gds\gal\burnaby\final\2016\3 proj\1660296 agnico_provide engineering s_nunavu\1660296-024-r-rev0-3000\appendix a\A5\8. exploration landfill appendix.docx