

APPENDIX A-3

Site Roads, Culverts, and
Tiriganiaq and Wesmeg Areas



Photograph 1: Overview of Location of Culvert #1 (AEM Drone Photo 1 September 2018)



Photograph 2: Culvert #1, Upstream Ends of Culverts, Looking Northeast (11 September 2018)



Photograph 3: Culvert #1, Downstream Ends of Culverts, Looking Northeast (11 September 2018)



Photograph 4: Overview Showing Locations of Culverts #2, 3 and 4, Google Earth Image (August 2017)



Photograph 5: Areal Photo of Main Site, Service Road and Culvert #2 Shown in Foreground (AEM Drone Photo 1 September 2018)



Photograph 6: Culvert #2, Upstream Ends of Culverts, Looking Northeast (12 September 2018)



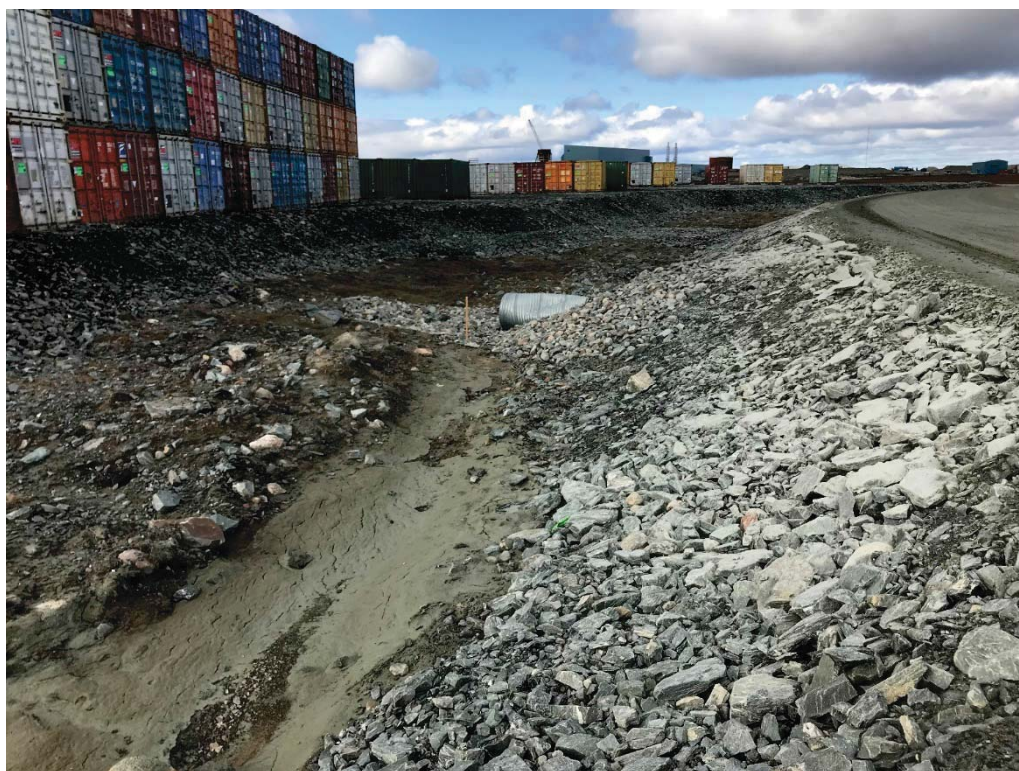
Photograph 7: Culvert #2, Downstream Ends of Culverts, Looking Southeast. Temporary Culvert in background. Culvert #2 to be Extended and Will Connect with Channel #1 (12 September 2018)



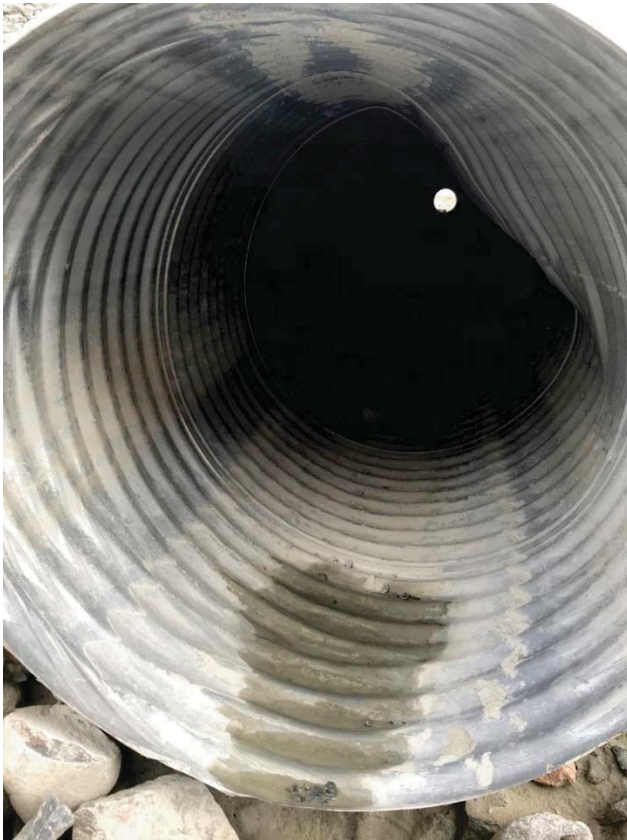
Photograph 8: Culvert #3, Upstream Ends of Culverts, Looking North. Service Road on Right (12 September 2018)



Photograph 9: Culvert #3, Downstream Ends of Culverts into CP1, Looking Northeast (12 September 2018)



Photograph 10: Culvert #4, Upstream End of Culvert, Looking North (12 September 2018)



Photograph 11: Culvert #4, Damage to Upstream End of Culvert. Similar to 2017 (12 September 2018)



Photograph 12: Culvert #4, Downstream End of Culvert into CP1, Looking Northwest (12 September 2018)



Photograph 13: Site Road, South of Culvert #4, Looking South (12 September 2018)



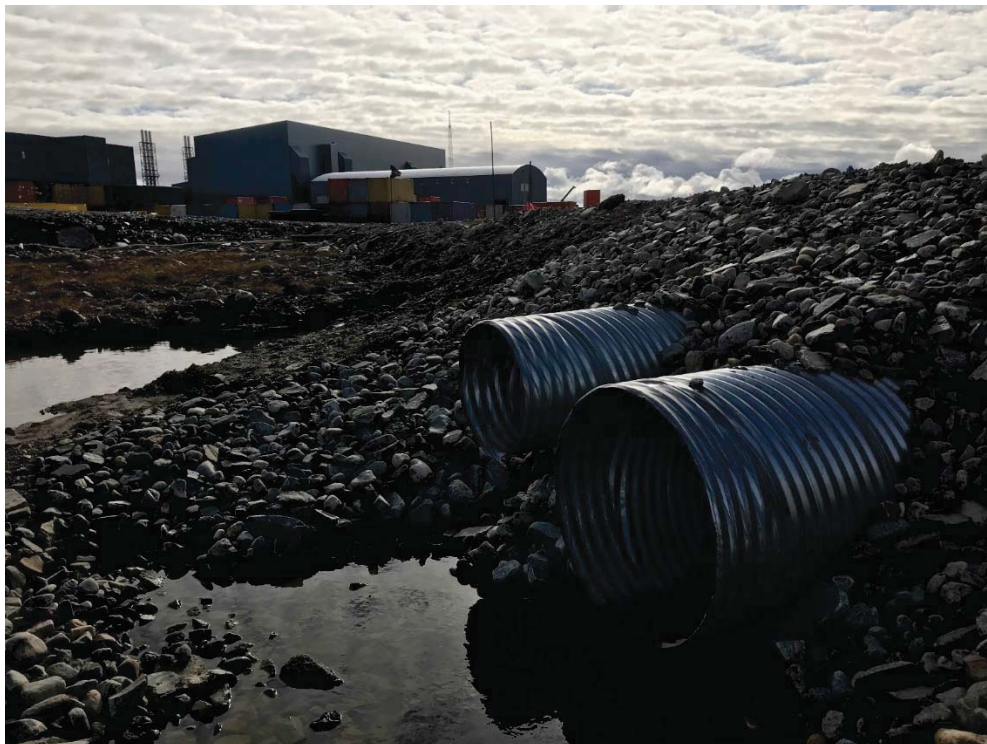
Photograph 14: Main Camp Water Intake, Access Road, Looking Southeast (11 September 2018)



Photograph 15: Main Camp Water Intake, Access Road, Looking Southwest (11 September 2018)



Photograph 16: Main Camp Water Intake, Pump Shack, Looking Northwest (11 September 2018)



Photograph 17: Emulsion Plant Access Road, Culvert #13, Upstream Ends Near H15E (14 September 2018)



Photograph 18: Emulsion Plant Access Road, Downstream Ends of Culvert #13 Near H15E (14 September 2018)



Photograph 19: Emulsion Plant Access Road, Looking Northwest from South End of Road Near Culvert #13 (14 September 2018)



Photograph 20: Emulsion Plant Access Road, Looking Southeast from Mid-Point of Road Near Emulsion Esker. Disturbed Tundra on East Side of Road that Could Pond Water and Cause Thermal Degradation of the Permafrost. (14 September 2018)



Photograph 21: Emulsion Plant Access Road, Looking Southeast from Near Dino Access Gate, Some Minor Cracking in Road Crest (14 September 2018)



Photograph 22: Emulsion Plant Access Road, Looking Southeast Approximately Half Way Between Access Gate and Emulsion Plant Pad. Water is Ponding Adjacent to the Road Which Could Lead to Permafrost Degradation if Left (14 September 2018)



Photograph 23: Tiriganiaq Access Road, Looking West. Steel Pipes Through Road Fills in Foreground. These Pipes may be for Cable Conduits (11 September 2018)



Photograph 24: Tiriganiaq Access Road, Looking East (11 September 2018)



Photograph 25: Overview of Magazine Storage Area, Wesmeg Access Road, Vent Raise, and Borrow Area (AEM Drone Photo 1 September 2018)



Photograph 26: Wesmeg Access Road, Looking West from Near Tiriganiaq Esker (11 September 2018)



Photograph 27: Wesmeg Access Road Near Magazine Storage Area. Ponding Water and Disturbed Tundra (11 September 2018)



Photograph 28: Wesmeg Access Road, Water Ponded on South Side of Road (Lake B33A), Looking East (11 September 2018)



Photograph 29: Wesmeg Borrow, Erosion Along Western Toe, Looking North (11 September 2018)



Photograph 30: Wesmeg Vent Raise Area (11 September 2018)



Photograph 31: Wesmeg Vent Raise, Steel Pipe Culverts Through Entrance to Vent Raise (11 September 2018)



Photograph 32: Overview of Access Road to CP4 (AEM Drone Photo 1 September 2018)



Photograph 33: Access Road to CP4 (11 September 2018)

APPENDIX A-4

Temporary Ore and Waste Rock Storage Area



Photograph 1: Overview of Ore and Waste Rock Storage Area (AEM Drone Photo 1 September 2018)



Photograph 2: South Slope of Low Grade Ore Stockpile, Looking North (14 September 2018)



Photograph 3: View of Low and High Grade Ore Stockpiles, Looking North (14 September 2018)



Photograph 4: Cracking in the High Grade Stockpile, Similar to 2017 (14 September 2018)



Photograph 5: View of Top Bench of Waste Rock Pile, Safety Berms in Place, Small Pond of Water (14 September 2018)



Photograph 6: View Down Ramp from Top of Waste Rock Pile (14 September 2018)



Photograph 7: View of Low and High Grade Ore Stockpiles, Looking Southeast (14 September 2018)



Photograph 8: View of Waste Rock Stockpile, Looking South (14 September 2018)



Photograph 9: View of Crushed Ore Stockpiles, Looking Southwest (14 September 2018)

APPENDIX A-5

Other Mine Facilities



Photograph 1: Overview of Mine Facilities (Google Earth Image 2017)



Photograph 2: Landfarm, West Slope, Looking South (11 September 2018)



Photograph 3: Landfarm, Crest of West Side, Looking Southeast (11 September 2018)



Photograph 4: Landfarm, Liner Exposed on East Side, Looking Southeast (11 September 2018)



Photograph 5: Landfarm, View from Southwest corner Looking North. Material is being Excavated Hauled to Screener then Finer Material Returned to Landfarm (11 September 2018)



Photograph 6: Landfarm, South Slope, Looking East (11 September 2018)



Photograph 7: Landfarm, East Slope, Looking South (11 September 2018)



Photograph 8: Landfarm, North Slope, Looking West (11 September 2018)



Photograph 9: Landfarm Screening Area, South Slope Looking East (11 September 2018)



Photograph 10: Landfarm Screening Area, West Side, Looking North (11 September 2018)



Photograph 11: View of Landfarm Screening Area from Northwest Corner (11 September 2018)



Photograph 12: Portal No. 1, View Down East Side, Looking South. Minor Erosion on Surface of Backfill (12 September 2018)



Photograph 13: Portal No. 1, View Down West Side, Looking South (12 September 2018)



Photograph 14: Portal No. 1, Looking North (12 September 2018)



Photograph 15: Portal No. 1, Excavation Around Portal, Looking West (12 September 2018)



Photograph 16: Portal No. 2, East Side, Looking South (11 September 2018)



Photograph 17: Portal No. 2, West Side, Backfill Placement In Progress, Looking South (11 September 2018)



Photograph 18: Portal No. 2, Looking North (11 September 2018)



Photograph 19: Portal No. 2, South Perimeter Berm, Looking West (13 September 2018)



Photograph 20: Portal No. 2, West Cut Slope with Rock Bolts and Mesh, Looking West (13 September 2018)



Photograph 21: Exploration Landfill, View from Southwest Corner, Looking North (13 September 2018)



Photograph 22: Exploration Landfill, Cracking on Downstream Slope at the Northwest Corner (13 September 2018)



Photograph 23: Exploration Landfill, View of North Slope looking East (13 September 2018)



Photograph 24: Exploration Landfill, Cracking on North Slope (13 September 2018)



Photograph 25: Exploration Landfill, View of Slope from Northeast Corner, Looking South (13 September 2018)



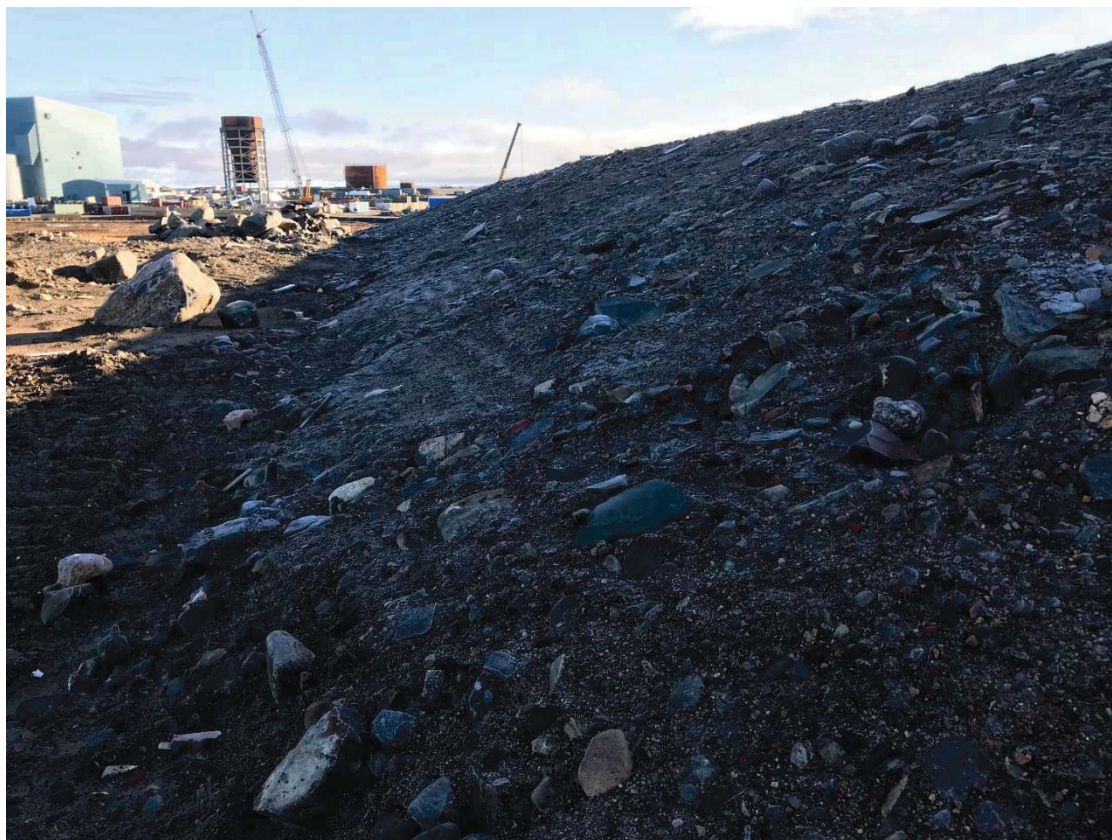
Photograph 26: Exploration Landfill, View of Top of Landfill from Northeast Corner, Looking South (13 September 2018)



Photograph 27: Operations Landfill, Overview of Original Landfill and Expansion, Looking Southwest (AEM Drone Photo 1 September 2018)



Photograph 28: Operations Landfill, View from Northeast Corner, Looking South (13 September 2018)



Photograph 29: Operations Landfill, Downstream Slope of North Berm, Looking Northeast (13 September 2018)



Photograph 30: Operations Landfill, North and East Slopes from Northeast Corner, Looking South. Some Water Pooled at Toe of Slope (13 September 2018)



Photograph 31: Operations Landfill, View of Southwest Berm, Looking Northwest (13 September 2018)



Photograph 32: Operations Landfill Expansion, View of South and East Sides, Looking West (13 September 2018)



Photograph 33: Operations Landfill Expansion, View from Southeast Corner, Looking West (13 September 2018)



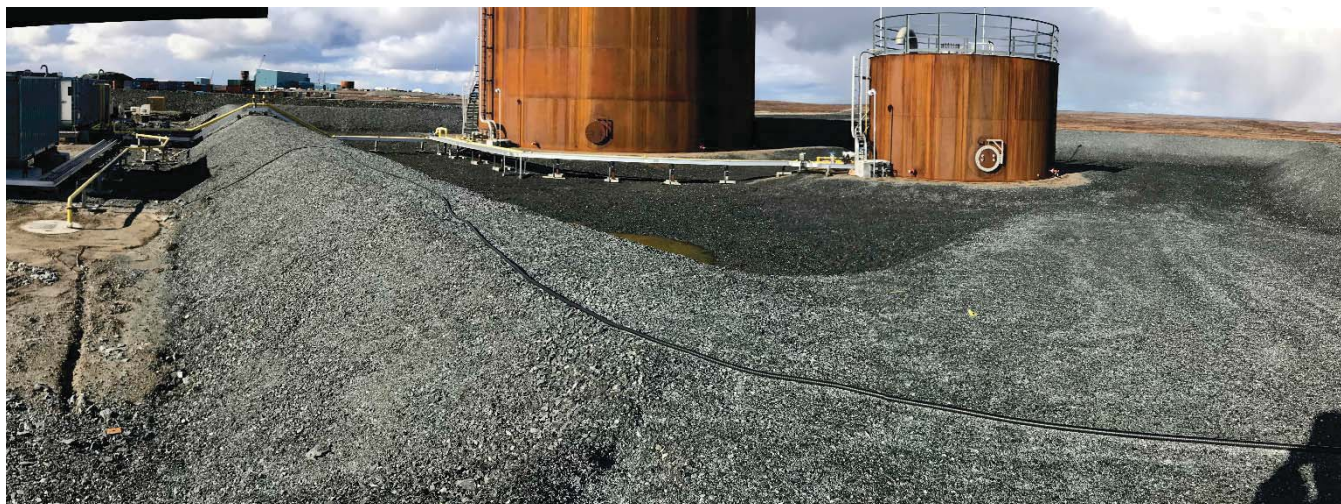
Photograph 34: Operations Landfill Expansion, Northeast Slope from the Southeast Corner of the New Landfill Expansion. Slopes of New Expansion are Steeper than Original Landfill Slopes (13 September 2018)



Photograph 35: Mine Site Fuel Storage, Northeast and Northwest Containment Berm Slopes, Looking South from North Corner (12 September 2018)



Photograph 36: Mine Site Fuel Storage, Slope of Southeast Containment Berm, Looking Northeast (12 September 2018)



Photograph 37: Mine Site Fuel Storage, Overview of Interior of Facility from South Corner. Southwest Containment Berm to left of Photograph (12 September 2018)



Photograph 38: Industrial Fuel Storage, Overview of Interior of Facility, Looking West (11 September 2018)



Photograph 39: Industrial Fuel Storage, Overview of Exterior Slopes of Facility, Looking North (11 September 2018)



Photograph 40: Industrial Fuel Storage, West Berm Crest and Slope, Looking North (11 September 2018)



Photograph 41: Erosion of North Slope of Main Camp/Industrial Pad, Looking East. (11 September 2018)



Photograph 42: Erosion of North Slope of Main Camp/Industrial Pad, Looking Southwest. (11 September 2018)



Photograph 43: Crest of Northwest Slope of Main Camp/Industrial Pad, Looking North. (11 September 2018)



Photograph 44: Slope Along East Side of Main Camp, Looking Southwest. (11 September 2018)



Photograph 45: Slope Between Main Camp and Multi Service Building, Looking West. (11 September 2018)



Photograph 46: Water Poned West of Industrial Fuel Storage and South of Process Plant, Looking North (11 September 2018)



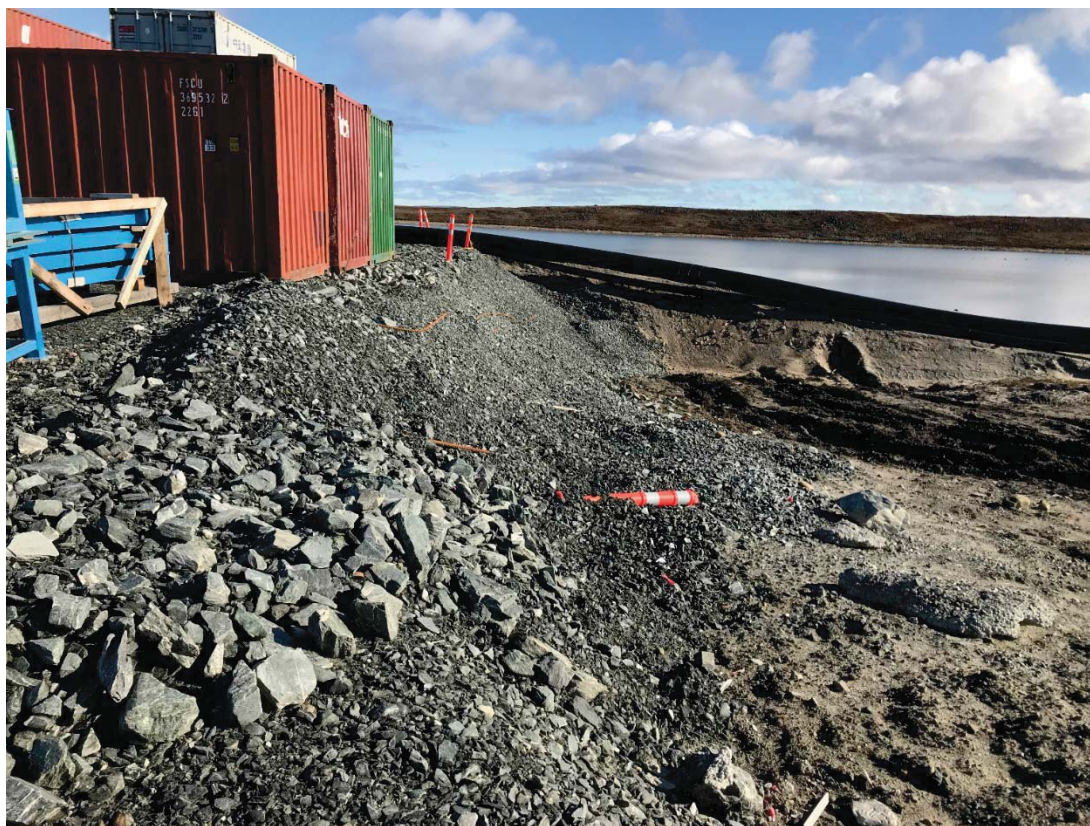
Photograph 47: South Slope of Incinerator Pad, Erosion of Esker Material on Slope, Crushed Material Placed as Pad Surface, Looking East. Placement of Rockfill for Construction of Ore Storage Pad 2 In Progress to South. (11 September 2018)



Photograph 48: South Slope of East Vent Raise Pad, Looking Northeast. (12 September 2018)



Photograph 49: Temporary Cyanide Storage Pad, Looking Northwest. (13 September 2018)



Photograph 50: Effluent Water Treatment Plant South Slope, Looking East. Pipe Berm Constructed With Erodible Esker Sand to Right of Photo. (13 September 2018)



Photograph 51: Effluent Water Treatment Plant East Slope, Looking South. (13 September 2018)



Photograph 52: Emulsion Plant Pad, Overview Looking Northeast from Emulsion Storage Pad (14 September 2018)



Photograph 53: Emulsion Plant Pad, Erosion and Cracking on East Slope, Looking North. (14 September 2018)



Photograph 54: Emulsion Plant Pad, Erosion and Cracking on East Slope, Looking South. (14 September 2018)



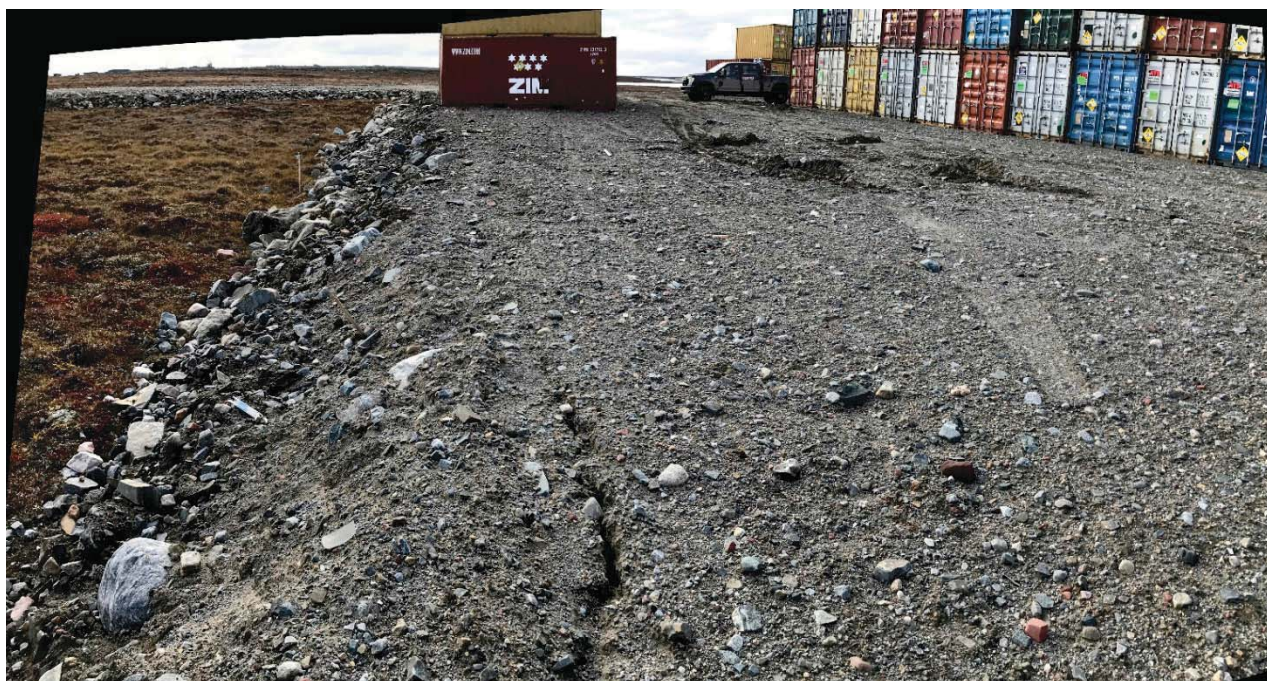
Photograph 55: Emulsion Plant Pad, North end of East Slope, Looking South. Coarser Material and No Erosion (14 September 2018)



Photograph 56: Emulsion Plant Pad, Drainage Ditch Along North Side. (14 September 2018)



Photograph 57: Emulsion Plant Storage Pad, Overview Looking Southwest from Emulsion Plant Pad. (14 September 2018)



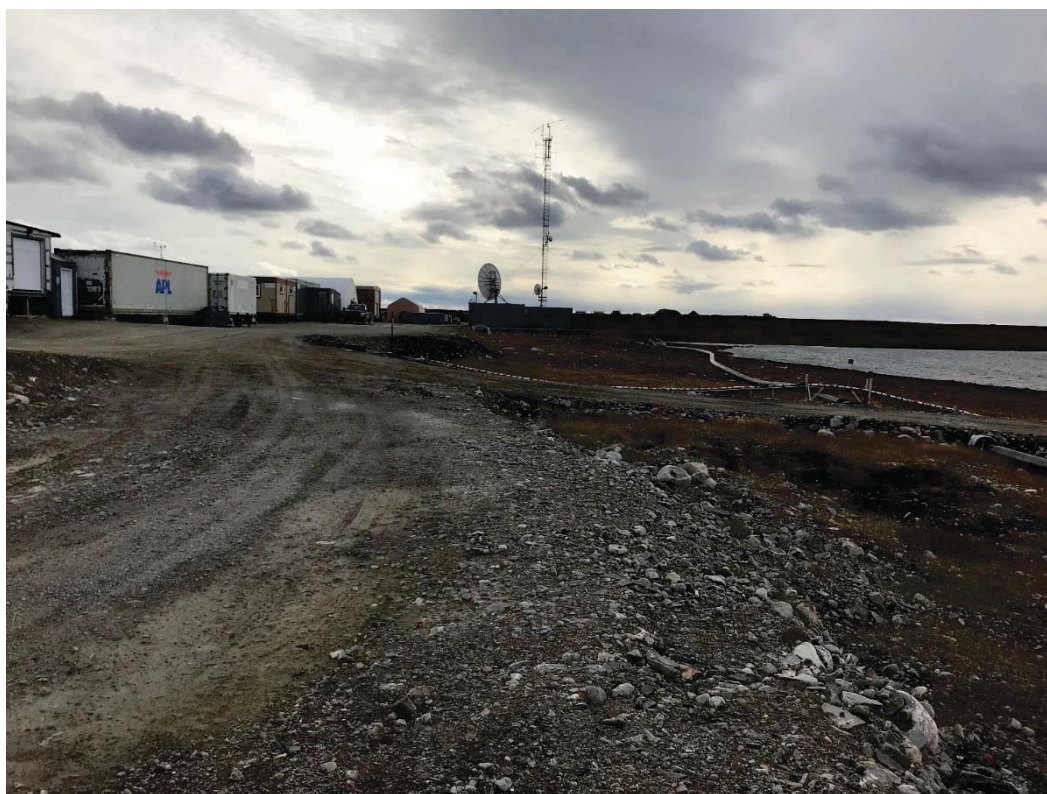
Photograph 58: Emulsion Plant Storage Pad, Cracking in Crest and Rut Marks in Middle of Pad From Loader, Looking Southeast. (14 September 2018)

APPENDIX A-6

Exploration Camp



Photograph 1: Overview of Exploration Camp, access road, landfarm and fuel storage. Google Earth Image (August 2017)



Photograph 2: Exploration Camp Pad, North Slope, looking West, near Fresh Water Intake Access Road (10 September 2018)



Photograph 3: Exploration Camp Pad, Erosion on Southeast Slope in Foreground of Photograph. New Genset Facility in Background (10 September 2018)



Photograph 4: Exploration Camp Pad, Sand Placed Over Cables (10 September 2018)



Photograph 5: Exploration Camp Pad, South Slope Looking Northeast, Excavator Removing Contaminated Soil from Fuel Spill (10 September 2018)



Photograph 6: Exploration Camp Pad, South Slope Looking North. Water Treatment Discharge (10 September 2018)



Photograph 7: Exploration Camp Pad, Looking West at Slope on South Side of Camp Trailers (10 September 2018)



Photograph 8: Exploration Camp Pad, Looking North at Fuel Storage Near Helicopter Pad (10 September 2018)



Photograph 9: Exploration Camp Pad, Looking Southwest, Disturbance of Tundra (10 September 2018)



Photograph 10: Exploration Camp Pad, Genset Relocation, Looking Southwest at Berm Containment (10 September 2018)



Photograph 11: Exploration Camp Pad, Genset Relocation, Interior Containment and Sump (10 September 2018)



Photograph 12: Exploration Camp Fresh Water Intake, Looking North (10 September 2018)



Photograph 13: Exploration Camp Fresh Water Intake, Looking Northeast (10 September 2018)



Photograph 14: Exploration Camp Fresh Water Intake Access Road, Pipeline Crossing, Looking Southwest (10 September 2018)



Photograph 15: Exploration Camp Fresh Water Intake, Looking West (10 September 2018)



Photograph 16: Exploration Camp Diffuser Access Road Adjacent to Camp Trailers, Looking Northeast (10 September 2018)



**Photograph 17: Exploration Camp Diffuser Access Road Adjacent to Camp Trailers, Looking West
(10 September 2018)**



**Photograph 18: Exploration Camp Diffuser Access Road, Cracking on South Side of Road, Looking West
(10 September 2018)**



Photograph 19: Exploration Camp Diffuser Access Road, Minor Cracking on North Side of Road, Looking East (10 September 2018)



Photograph 20: Exploration Camp Diffuser Entering Meliadine Lake, Looking North (10 September 2018)



Photograph 21: Exploration Camp Diffuser Access Adjacent to Meliadine Lake, Looking South (10 September 2018)



Photograph 22: Exploration Camp Access Road, Downstream End of Culvert on North Side of Camp, not exposed on upstream (10 September 2018)



Photograph 23: Exploration Camp Access Road, Downstream End of Culvert on North Side of Camp, not exposed on upstream (10 September 2018)



Photograph 24: Exploration Camp Access Road, Downstream End of Culvert on North Side of Camp (10 September 2018)



Photograph 25: Exploration Camp Access Road, Upstream End of Culvert on North Side of Camp (10 September 2018)



Photograph 26: Exploration Camp Access Road, Downstream Ends of Steel Pipes on Northwest Side of Camp, not exposed on upstream (10 September 2018)



Photograph 27: Exploration Camp Access Road, North Side of Road near Camp, Looking East (10 September 2018)



Photograph 28: Exploration Camp Access Road, approximately 250 m West of Camp, Erosion on Crest and Slope of Road, Looking North (10 September 2018)



Photograph 29: Exploration Camp Access Road, approximately 250 m West of Camp, Erosion on Slope of Road, Looking North (10 September 2018)



Photograph 30: Exploration Camp Access Road, Downstream End of Culvert through Road, Looking East (10 September 2018)



**Photograph 31: Exploration Camp Access Road, Upstream End of Culvert through Road, Looking East
(10 September 2018)**



**Photograph 32: Exploration Camp Access Road, Downstream End of Culvert through Road, Looking North
(10 September 2018)**



Photograph 33: Exploration Camp Access Road, Upstream End of Culvert through Road, Looking South (10 September 2018)



Photograph 34: Exploration Camp Access Road, North Side of Road Approximately 500 m West of Camp, Looking Northeast (10 September 2018)



Photograph 35: Exploration Camp Access Road, South Side of Road Approximately 550 m West of Camp, Looking Southwest (10 September 2018)



Photograph 36: Exploration Camp Access Road, North Side of Road Looking Southwest from the Fuel Storage Area (10 September 2018)



Photograph 37: Exploration Camp Access Road, South Side of Road near Intersection with AWAR Looking Northeast (10 September 2018)



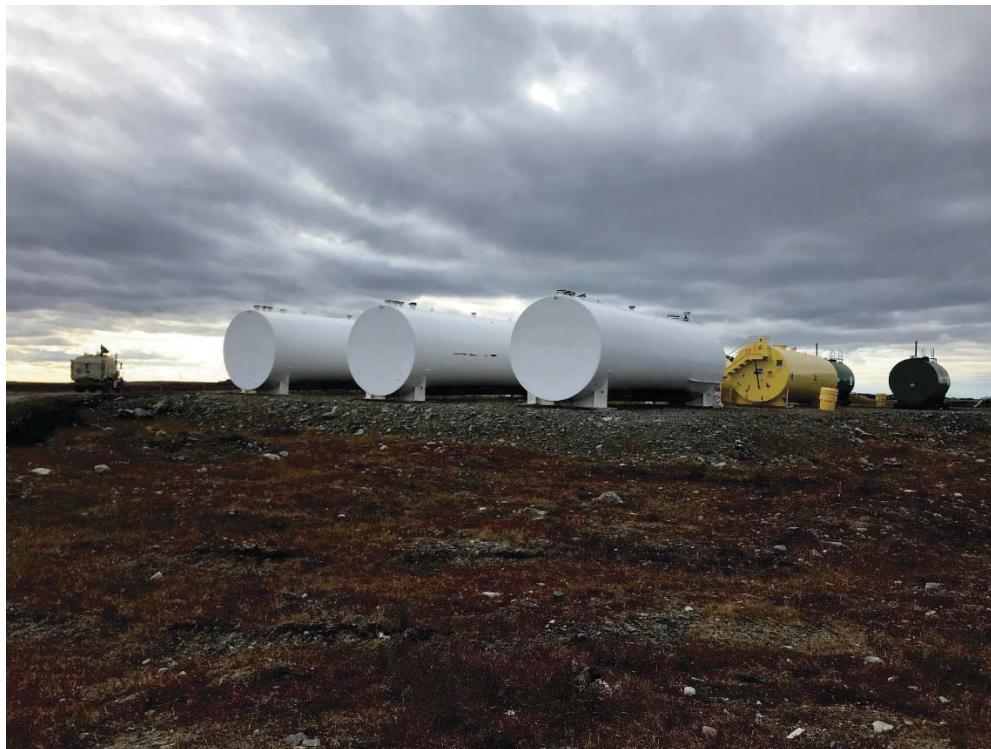
Photograph 38: Exploration Camp Fuel Storage, Looking Northwest along Northeast side of Fuel Storage Area (10 September 2018)



Photograph 39: Exploration Camp Fuel Storage, Minor Cracking in Fuel Storage Area Pad (10 September 2018)



Photograph 40: Exploration Camp Fuel Storage, Looking Southwest along Northwest side of Fuel Storage Area (10 September 2018)



Photograph 41: Exploration Camp Fuel Storage, Looking North at South side of Fuel Storage Area (10 September 2018)



Photograph 42: Exploration Camp Landfarm, Downstream Face of West Slope, Looking Southeast (10 September 2018)



Photograph 43: Exploration Camp Landfarm, Downstream Face at Northwest Corner, Looking Southeast (10 September 2018)



Photograph 44: Exploration Camp Landfarm, North Slope and Crest, Looking Northeast (10 September 2018)



Photograph 45: Exploration Camp Landfarm, West Slope Crest, Looking Southeast (10 September 2018)



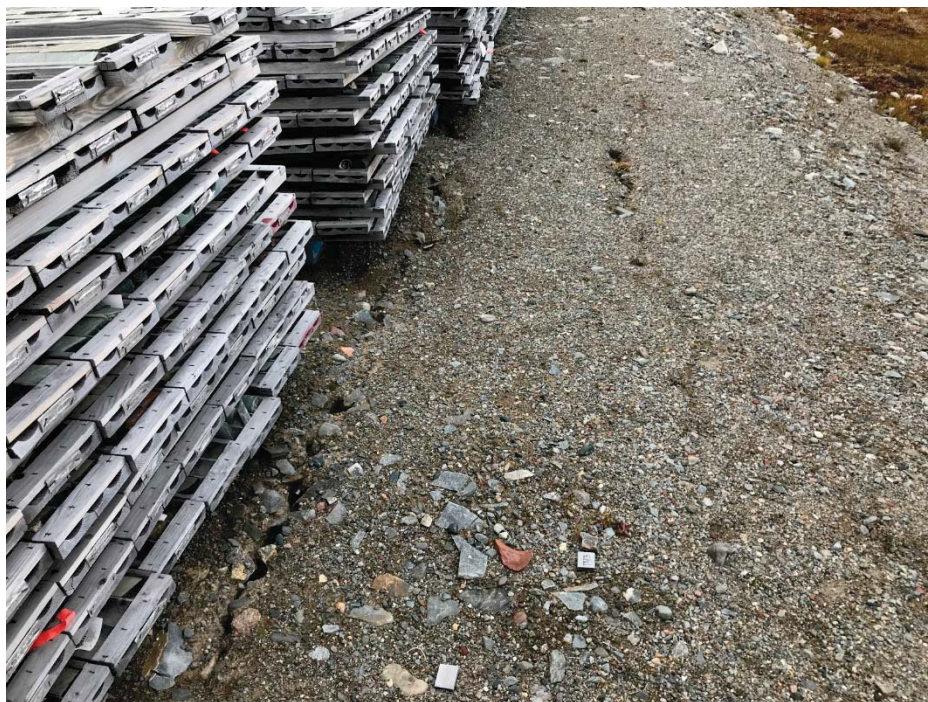
Photograph 46: Exploration Camp Landfarm, East Slope and Crest, Looking Southeast (10 September 2018)



Photograph 47: Exploration Camp Landfarm, South Slope Crest, Looking Southeast. Fuel Storage in Background (10 September 2018)



Photograph 48: Exploration Camp Landfarm, Downstream Face of South Slope, Looking Northeast (10 September 2018)



Photograph 49: Exploration Camp Cracking in Core Storage Pad. (10 September 2018)