

Appendix H-8

Archaeology report



## REPORT

# Meliadine Gold Project, Nunavut

## *2019 Archaeological Site Status Report*

Submitted to:

**Sylvie LeBlanc, Ph.D.**

Territorial Archaeologist

Department of Culture and Heritage

Government of Nunavut

P.O. Box 310

Igloolik, Nunavut X0A 0L0

Submitted by:

**Golder Associates Ltd.**

1721 8th Street East Saskatoon, Saskatchewan, Canada S7H 0T4 Canada

+1 306 665 7989

18101514

March 2019



## Distribution List

1 Copy - Department of Culture and Heritage, Government of Nunavut

1 Copy - Agnico Eagle Mines Limited

1 Copy - Golder Associates Ltd.

# Table of Contents

<b>SITE STATUS .....</b>	<b>1</b>
--------------------------	----------

## **TABLES**

Table 1: Status of Archaeological Sites Located in the Mine Infrastructure Local Study Area .....	3
Table 2: Status of Archaeological Sites Located in the All-Weather Access Road Local Study Area .....	10
Table 3: Status of Archaeological Sites within the Rankin Inlet Local Study Area.....	16

## **FIGURES**

Figure 1: Cultural Resources Local Study Area .....	2
---	---

## SITE STATUS

The Government of Nunavut has requested that Agnico Eagle Mines Limited (Agnico Eagle) submit a series of maps to help facilitate the management of the archaeological resources that occur within the Meliadine Project Local Study Area (Request GN-30 of the Joint Statement on Suggested Terms and Conditions respecting NIRB Final Hearing on Meliadine Gold Project, Nunavut Department of Justice File #7660-204, issued 20 August, 2014).

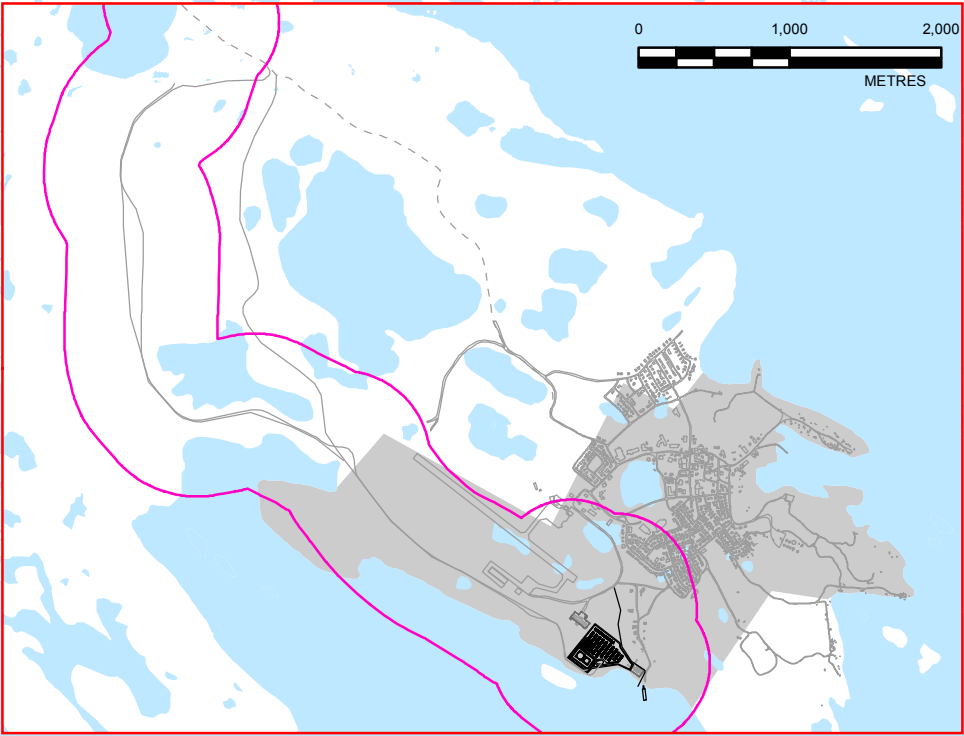
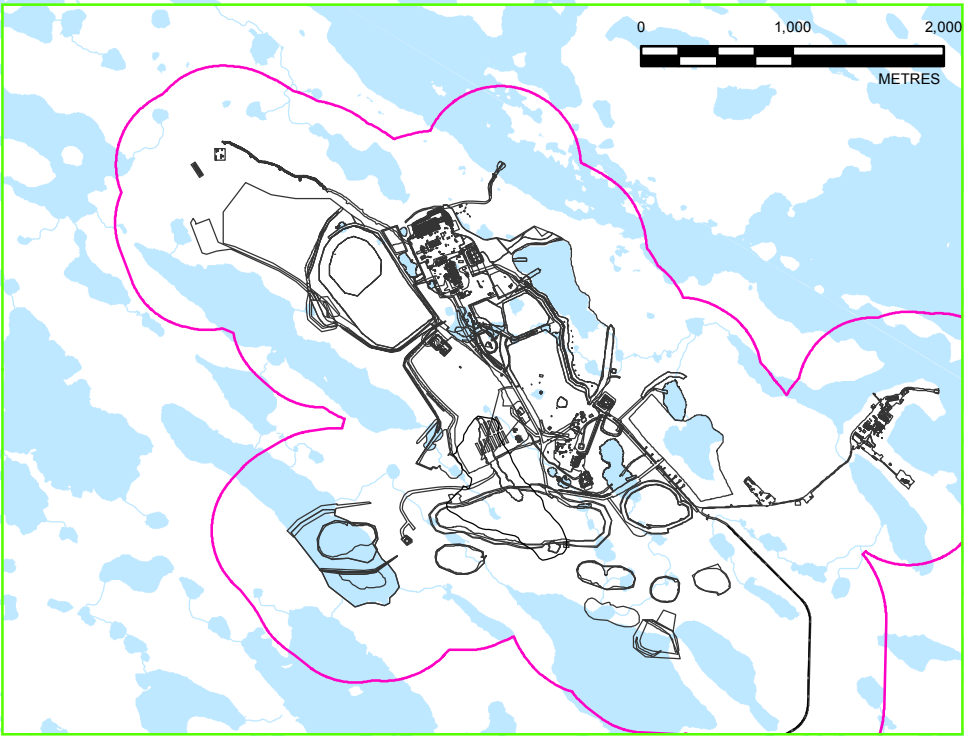
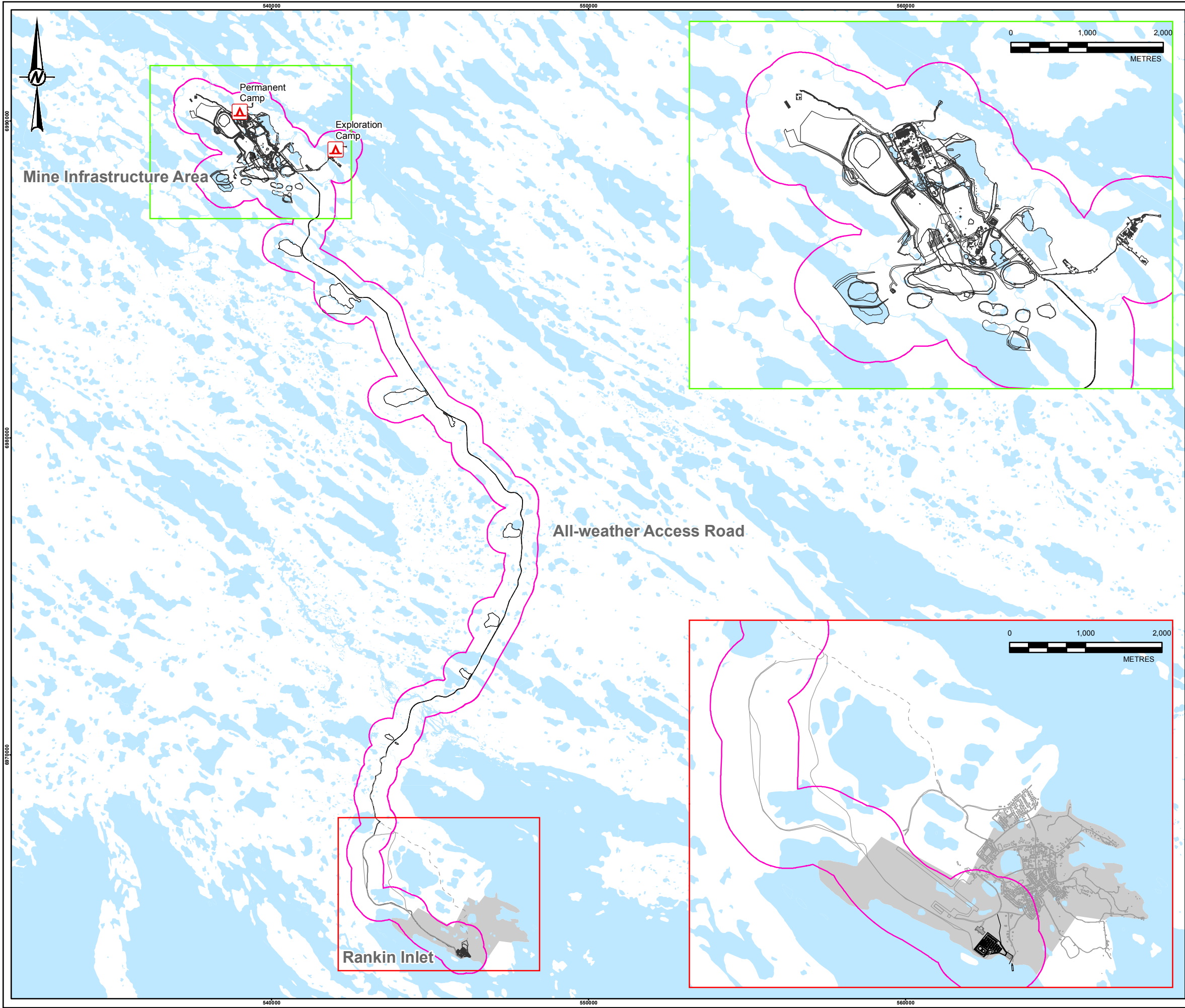
This document has been prepared to provide this updated information in years that changes have occurred to the Meliadine Gold Project (Project) footprint or an Archaeological Permit is taken out for work within the Local Study Area (LSA). The version presented here is redacted for public viewing, as it does not show the maps with plotted archaeological sites for their continued protection. Rather, a series of tables that summarize the current status of archaeological sites identified within the Project area and the mitigative measures that have been undertaken to date are presented.

In 2018, Nunavut Archaeologist Permit 2018-16A was issued to Golder Associates Ltd. The assessment focussed on examining the expansion to the Meliadine East Esker borrow pit located north of Lake H17, as well as baseline studies for potential infrastructure under consideration. Two new archaeological sites (KgJm-76 and 77) were identified during the course of the field program and 11 sites were revisited (KgJm-1, 2, 3, 4, 6, 11, 37, 38, 39, 47, and 62). The KgJm-11 site area was further assessed through shovel testing, and a potential tent ring and hearth feature at KgJm-4 were mitigated through feature mapping and proportional test excavation. Both of these sites were examined in relation to the Meliadine East Esker borrow pit expansion.

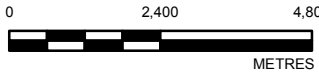
The updated Project footprint and Cultural Resources LSA are shown in Figure 1. The LSA includes a 500 m buffer surrounding proposed project infrastructure/footprint. Table 1 provides an index to the sites associated with the mine infrastructure area, summarizing the site type and mitigative activities conducted to date. Table 2 provides an index to the sites associated with the All-Weather Access Road (AWAR). Table 3 provides an index to sites associated with the community of Rankin Inlet and the airport bypass road.




R:\TH\golder\golder\unbury\CAD\GIS\Client\Agnico\_Eagle\_Mines\_Lt\Mainline\_Gold\_Project\98\_PROJECTS\1810151402\_PRODUCTION\1040MXD\Report\18101514\_1040\_FIG\_01\_2018\_CULTURAL\_RESOURCE\_LOCAL\_STUDY\_AREA.mxd PRINTED ON: 2019-03-07 AT 3:52:42 PM



- LEGEND**
- CAMP
  - PROJECT INFRASTRUCTURE
  - ALL-WEATHER ACCESS ROAD (AWAR)
  - ROAD - NEW
  - ROAD - EXISTING
  - WATERCOURSE
  - WATERBODY
  - BUILT-UP AREA AROUND RANKIN INLET
  - LOCAL STUDY AREA (LSA)



**REFERENCE(S)**  
ARCHAEOLOGICAL SITES OBTAINED FROM THE GOVERNMENT NUNAVUT DEPARTMENT OF CULTURE, LANGUAGE ELDER'S AND YOUTH. THIS DATA IS FOR INTERNAL USE ONLY AND NOT FOR PUBLIC DISTRIBUTION.  
BASE DATA OBTAINED FROM AGNICO EAGLE MINES LIMITED.  
DATUM: NAD 83 PROJECTION: UTM ZONE 15

CLIENT  
 **AGNICO EAGLE MINES LIMITED**

**AGNICO EAGLE**  
PROJECT  
**MELIADINE GOLD PROJECT  
NUNAVUT**

TITLE  
**CULTURAL RESOURCE LOCAL STUDY AREA**

CONSULTANT	YYYY-MM-DD	2019-03-07
	DESIGNED	PY
	PREPARED	MH
	REVIEWED	
	APPROVED	



PROJECT NO.	CONTROL	REV.	FIGURE
18101514	1040	A	1

IF THIS MEASUREMENT DOES NOT MATCH WHAT IS SHOWN, THE SHEET SIZE HAS BEEN MODIFIED FROM: ANSI B 22mm

**Table 1: Status of Archaeological Sites Located in the Mine Infrastructure Local Study Area**

Borden Number	Cultural Affiliation	Site Type	Archaeological Significance	Distance from Development	Status of Site	Details of Status	Permit Reports Detailing Status	Recommendations
KgJm-1	Neoeskimo	Campsite (tent ring Cache)	low	850 m from emulsion road	Not Mitigated	Site location updated	2018-016A	Continued avoidance by 30 m buffer or additional mitigation required
KgJm-2	Neoeskimo	Campsite (pit and hearth)	low	950 m from emulsion road	Not Mitigated	Site location updated	2018-016A	Continued avoidance by 30 m buffer or additional mitigation required
KgJm-3	Palaeoeskimo	Campsite (hearth box mid-passage)	high	Database coordinates 710 m from emulsion road	Not Mitigated	Not located; original UTM coordinates appear in error; ATV trail may have impacted site	2018-016A	Continued avoidance by 30 m buffer; further efforts should be made to locate site
KgJm-4	Palaeoeskimo	Tent ring and hearth	high	0 m from esker borrow boundary	Mitigated	Site location updated; Detailed mapping, testing and photo documentation	2018-016A	No further work
KgJm-6/43	Palaeoeskimo (Reported)	Box hearth (Reported)	low	Reported location 0 m from esker borrow boundary	Mitigated	Site revisited on 3 occasions; no evidence of feature; may have been impacted by ATV trail; appears to be same site as KgJm-43; landform where site reported shovel tested, all negative.	2014-016A 2017-014A 2018-016A	No further work
KgJm-7	Neoeskimo	Campsite (Thule pit house)	high	0 m from Lake H17; 65 m from esker borrow pit	Partially Mitigated	Features F1 to F6, F8 mapped, tested and excavated in relation to Lake H17; Features F7 and F9 above high water and not mitigated	2014-016A; 2016-07A	No further concern in relation to lake H17; if F7 and F9 on esker crest to be impacted further work required.

**Table 1: Status of Archaeological Sites Located in the Mine Infrastructure Local Study Area**

Borden Number	Cultural Affiliation	Site Type	Archaeological Significance	Distance from Development	Status of Site	Details of Status	Permit Reports Detailing Status	Recommendations
KgJm-8	Neoeskimo	Campsite (Thule pit house)	high	410 m from infrastructure	Not Mitigated	Documented	2011-26A Site form update	Continued avoidance by 30 m buffer or additional mitigation required
KgJm-9	Neoeskimo	Campsite (Thule pit house)	high	680 m from infrastructure	Not Mitigated	Documented	2011-26A Site form update	Continued avoidance by 30 m buffer or additional mitigation required
KgJm-10	Neoeskimo	Campsite	low	40 m from Lake H17; 0 m from current esker borrow boundary	Mitigated	Feature completely excavated in 1976	Linnamae 1977; 2014-016A; 2016-07A	No further work
KgJm-11	Palaeoeskimo (Reported)	Semi-circle stone feature	low to moderate	0 m from esker borrow boundary	Mitigated	Located one feature; Photo documentation; feature mapping; proportional excavation (2017); shovel tested site area (2018); no evidence to suggest Palaeoeskimo	2014-016A; 2016-07A; 2017-014A 2018-016A	No further work
KgJm-12	Neoeskimo	Campsite	low to moderate	60 m from Lake H17; 10 to 40 m from current esker borrow boundary	Not Mitigated	Documented, staked 2014; Feature F8 within 10 m of borrow pit mapped and tested 2017; same site as KgJm-41	2014-016A; 2016-07A; 2017-014A	Continued avoidance of remaining features by 30 m buffer or additional mitigation required
KgJm-13	Palaeoeskimo	Campsite (Box hearth)	high	45 m from lake H17 - higher elevation; 55 m from current esker borrow boundary	Not Mitigated	Documented	2014-016A; 2016-07A; 2017-014A	Continued avoidance by 30 m buffer or additional mitigation required
KgJm-14	Neoeskimo	Cache	low	130 m from lake H17; 170 m from current esker borrow boundary	Not Mitigated	Documented	2014-016A; 2016-07A	Continued avoidance by 30 m buffer or additional mitigation required



**Table 1: Status of Archaeological Sites Located in the Mine Infrastructure Local Study Area**

Borden Number	Cultural Affiliation	Site Type	Archaeological Significance	Distance from Development	Status of Site	Details of Status	Permit Reports Detailing Status	Recommendations
KgJm-15/42	Neoeskimo	Campsite	low	0 m from current esker borrow boundary	Mitigated	Detailed mapping and excavation; Duplicate site number	2014-016A	No further work
KgJm-16	Neoeskimo	Campsite	low to moderate	75 m from Lake H17, higher elevation	Not Mitigated	Documented	2011-26A site form update	Continued avoidance by 30 m buffer or additional mitigation required
KgJm-17	Neoeskimo	Hunting	low	20 m from lake H17, higher elevation	Not Mitigated	Documented: High accuracy UTM recording, staked 2012, 2016 for avoidance during Lake H17 works	2012-24A; 2014-016A	Continued avoidance/monitor or additional mitigation required
KgJm-18	Neoeskimo	Campsite	low	80 m from Lake H17; higher elevation	Mitigated	Photo documentation, feature mapping, proportional excavation	2012-024A	No further work
KgJm-19	Neoeskimo	Boat stand	high	60 m from Lake H17; higher elevation	Not Mitigated	Documented, staked 2012	2012-024A	Continued avoidance by 30 m buffer or additional mitigation required
KgJm-20	undetermined	Campsite	low	Reported location 280 m from infrastructure	Not Mitigated; Reported site location in error	Site location revisited and no evidence of features	2011-26A	Site not positively identified; Continued avoidance by 30 m buffer or additional mitigation required
KgJm-21	undetermined	Cache	low	Reported location 260 m from infrastructure	Not Mitigated; Reported site location in error	Site location revisited and no evidence of features	2011-26A	Site not positively identified; Continued avoidance by 30 m buffer or additional mitigation required

**Table 1: Status of Archaeological Sites Located in the Mine Infrastructure Local Study Area**

Borden Number	Cultural Affiliation	Site Type	Archaeological Significance	Distance from Development	Status of Site	Details of Status	Permit Reports Detailing Status	Recommendations
KgJm-22	Palaeoeskimo	Mid passage	high	123 m from infrastructure	Mitigated	Features completely excavated	Linnamae 1977, 2011-26A	No further work
KgJm-23	Neoeskimo	Hunting	low	110 m from infrastructure	Mitigated	Photo documentation, feature mapping proportional excavation	2011-26A; 2012-024A	No further work
KgJm-24	Neoeskimo	Boat stand	high	220 m from infrastructure	Mitigated	Photo documentation, feature mapping proportional excavation	2011-26A; 2012-024A	No further work
KgJm-25	Palaeoeskimo	Mid passage	high	235 m from infrastructure	Mitigated	Photo documentation, feature mapping proportional excavation	2011-26A; 2012-024A	No further work
KgJm-26	Neoeskimo	Campsite	low	300 m from infrastructure; 10 m from ATV trail	Mitigated	Photo documentation, feature mapping proportional excavation	2011-26A; 2012-024A; 2017-14A	No further work
KgJm-27	Neoeskimo	Hunting	low to moderate	355 m from infrastructure	Not Mitigated	Documented and staked	2011-26A; 2012-024A	Continued avoidance by 30 m buffer or additional mitigation required
KgJm-28	Neoeskimo	Campsite	low	420 m from infrastructure	Not Mitigated	Documented	2011-26A	Continued avoidance by 30 m buffer or additional mitigation required
KgJm-29	Neoeskimo	Campsite	low to moderate	440 m from infrastructure	Not Mitigated	Documented	2011-26A	Continued avoidance by 30 m buffer or additional mitigation required
KgJm-30	Neoeskimo	Campsite	Low to moderate	490 m from infrastructure	Mitigated	Photo documentation, feature mapping proportional excavation	2011-26A; 2012-024A	No further work

**Table 1: Status of Archaeological Sites Located in the Mine Infrastructure Local Study Area**

Borden Number	Cultural Affiliation	Site Type	Archaeological Significance	Distance from Development	Status of Site	Details of Status	Permit Reports Detailing Status	Recommendations
KgJm-31	Neoeskimo	Campsite	low to moderate	470 m from infrastructure	Not Mitigated	Documented and staked	2011-26A; 2012-024A	Continued avoidance by 30 m buffer or additional mitigation required
KgJm-32	Neoeskimo	Hunting blind	low	550 m from infrastructure	Not Mitigated	Documented	2011-26A Site form update	Continued avoidance by 30 m buffer or additional mitigation required
KgJm-33	Neoeskimo	Campsite	low to moderate	625 m from infrastructure	Not Mitigated	Documented	2011-26A Site form update	Continued avoidance by 30 m buffer or additional mitigation required
KgJm-34	Neoeskimo	Campsite	low to moderate	620 m from infrastructure	Not Mitigated	Documented	2011-26A Site form update	Continued avoidance by 30 m buffer or additional mitigation required
KgJm-35	Neoeskimo	Hunting	low	410 m from infrastructure	Mitigated	Photo documentation, feature mapping proportional excavation	2011-26A; 2012-024A	No further work
KgJm-36	Neoeskimo	Campsite	low	0 m from sand quarry	Mitigated	4 features mitigated in 1998, 1 in 2011	1998-876; 2011-26A	No further work
KgJm-37	Neoeskimo	Cache	low	200 m from exploration camp infrastructure	Not Mitigated	Site location updated	1998-876; 2018-016A	Continued avoidance by 30 m buffer or additional mitigation required
KgJm-38	Neoeskimo	Marker (stone slab marker)	low	670 m from exploration camp infrastructure	Not Mitigated	Site location updated	1998-876; 2018-016A	Continued avoidance by 30 m buffer or additional mitigation required
KgJm-39	Neoeskimo	Campsite (tent ring and hearth)	low	580 m from exploration camp infrastructure	Not Mitigated	Site location updated	1998-876; 2018-016A	Continued avoidance by 30 m buffer or additional mitigation required

**Table 1: Status of Archaeological Sites Located in the Mine Infrastructure Local Study Area**

Borden Number	Cultural Affiliation	Site Type	Archaeological Significance	Distance from Development	Status of Site	Details of Status	Permit Reports Detailing Status	Recommendations
KgJm-40	Neoeskimo	Cache	low	335 m from infrastructure	Mitigated	Photographed, mapped	2011-026A	No further work
KgJm-41	Neoeskimo	Campsite	low to moderate	60 m from Lake H17	Not Mitigated	Documented, staked 2014; same site as KgJm-12	2014-016A; 2016-07A	Continued avoidance by 30 m buffer or additional mitigation required
KgJm-15/42	Neoeskimo	Campsite	low to moderate	0 m from infrastructure	Mitigated	Features mapped and proportional excavation; Same site as KgJm-15	2014-016A; 2016-07A	No further work
KgJm-43	Palaeoeskimo (Reported)	Stone paving (Reported)	low	Reported location 20 m from freshwater intake	Mitigated	Site revisited on 2 occasions; no evidence of feature; feature may have been impacted by ATV trail; suggested to be same site as KgJm-6; landform where site reported shovel tested, all negative.	1998-876; 2014-016A; 2017-014A	No further work
KgJm-44	Neoeskimo	Hunting	low to moderate	0 m from infrastructure	Mitigated	Photo documentation, feature mapping and surface artifacts sample collected	2014-016A	No further work
KgJm-45	Neoeskimo	Hunting	low to moderate	0 m from infrastructure	Mitigated	Photo documentation, mapping	1998-876; 2010-005A; 2011-026A	No further work
KgJm-46	Neoeskimo	Campsite (recent)	low	0 m from infrastructure	Mitigated	Photo documentation, mapping	1998-876	No further work
KgJm-47	Neoeskimo	Hunting	low	550 m from infrastructure	Mitigated	Photo documentation, mapping (2010)	2008-003A; 2010-005A; 2018-016A	No further work

**Table 1: Status of Archaeological Sites Located in the Mine Infrastructure Local Study Area**

Borden Number	Cultural Affiliation	Site Type	Archaeological Significance	Distance from Development	Status of Site	Details of Status	Permit Reports Detailing Status	Recommendations
KgJm-48	Neoeskimo	Boat stand	low	600 m from infrastructure	Mitigated	Photo documentation, feature mapping proportional excavation	2011-026A; 2012-024A	No further work
KgJm-49	Neoeskimo	Cache	low	600 m from infrastructure	Not Mitigated	Documented	2011-026A	Continued avoidance by 30 m buffer or additional mitigation required
KgJm-50	Neoeskimo	Cache	low	0 m from infrastructure	Mitigated	location, photo documentation, feature mapping proportional excavation	2011-026A; 2012-024A	No further work
KgJm-51	Neoeskimo	Hunting	low	0 m from emulsion road borrow pit	Mitigated	2012 Hunting blind mapped and excavated; 2014 recent land use features documented	2011-026A; 2012-024A; 2014-016A; 2017-014A	No further work
KgJm-52	Neoeskimo	Cache	low	250 m from infrastructure	Mitigated	Photo documentation, feature mapping, proportional excavation	2011-026A; 2012-024A	No further work
KgJm-53	Neoeskimo	Stone marker / inuksuk	low	0 m from infrastructure	Mitigated	Photo documentation, shovel tests	2011-026A	No further work
KgJm-56	Neoeskimo	Isolated find	low	0 m from infrastructure	Mitigated	Photo documentation, shovel tests, collection	2012-024A	No further work
KgJm-61	Neoeskimo	Hunting Blind	low	250 m from infrastructure	Mitigated	Photo documentation, mapped and excavated	2012-024A	No further work
KgJm-62	Neoeskimo	Hunting Blind	Low	45 m from explosives cache	Not Mitigated	Documented, staked (2014)	2014-016A; 2018-016A	Continued avoidance by 30 m buffer or additional mitigation required



**Table 1: Status of Archaeological Sites Located in the Mine Infrastructure Local Study Area**

Borden Number	Cultural Affiliation	Site Type	Archaeological Significance	Distance from Development	Status of Site	Details of Status	Permit Reports Detailing Status	Recommendations
KgJm-76	Neoeskimo	Look out (Two Inuksuit)	Low	1,500 m from explosives plant	Not Mitigated	Documented	2018-016A	Continued avoidance by 30 m buffer or additional mitigation required
KgJm-77	Neoeskimo	Hunting (Cache)	Low	1,125 m from CP7	Not Mitigated	Documented	2018-016A	Continued avoidance by 30 m buffer or additional mitigation required

**Table 2: Status of Archaeological Sites Located in the All-Weather Access Road Local Study Area**

Borden Number	Cultural Affiliation	Site Type	Archaeological Significance	Distance from Development	Status of Site	Details of Status	Permit Report Detailing Status	Recommendations
KfJl-1	Neoeskimo	Cache	low	360 m from Discovery Haul Road	Not Mitigated	Documented	2012-024A	Continued avoidance by 30 m buffer or additional mitigation required
KfJl-3	Neoeskimo	Cache	low	230 m from Infrastructure	Not Mitigated	Documented	2011-26A	Continued avoidance by 30 m buffer or additional mitigation required
KfJl-4	Neoeskimo	Stone marker / inuksuk	low	145 m from Infrastructure	Mitigated	Photo documentation	2011-26A	No further work
KfJl-5	Neoeskimo	Hearth	low	490 m from Infrastructure	Not Mitigated	Documented	2011-26A	Continued avoidance by 30 m buffer or additional mitigation required
KfJl-6	Neoeskimo	Hearth	low	250 m from Discovery Haul Road	Not Mitigated	Documented	2012-024A	Continued avoidance by 30 m buffer or additional mitigation required
KfJl-7	Neoeskimo	Campsite	low	120 m from Discovery Haul Road	Not Mitigated	Documented	2012-024A	Continued avoidance by 30 m buffer or additional mitigation required

**Table 2: Status of Archaeological Sites Located in the All-Weather Access Road Local Study Area**

Borden Number	Cultural Affiliation	Site Type	Archaeological Significance	Distance from Development	Status of Site	Details of Status	Permit Report Detailing Status	Recommendations
KfJm-7	Neoeskimo	Campsite	low	Reported location 150 m from Borrow Pit	Not Mitigated	Site not revisited; location not confirmed	Linnamae and Clark 1974	Continued avoidance by 30 m buffer or additional mitigation required
KfJm-33	Undetermined	Unknown	Unknown	Reported location 405 m from Borrow Pit	Not Mitigated	Site not revisited; location not confirmed	Linnamae and Clark 1974	Continued avoidance by 30 m buffer or additional mitigation required
KfJm-46	Undetermined	Unknown	Unknown	Reported location 100m from AWAR	Not Mitigated	Site not revisited; location not confirmed	Linnamae and Clark 1974	Continued avoidance by 30 m buffer or additional mitigation required
KfJm-63	Palaeoeskimo	Campsite	moderate to high	195 m from AWAR Centreline	Not Mitigated	Documented	2008-03A	Continued avoidance by 30 m buffer or additional mitigation required
KfJm-66	Neoeskimo	Stone marker / inuksuk	low to moderate	40 m from Discovery Haul Road	Not Mitigated	Documented, staked 2012	2008-03A; 2012-024A	Continued avoidance by 30 m buffer or additional mitigation required
KfJm-67	Neoeskimo	Stone feature	low to moderate	130 m from Discovery Haul Road	Not Mitigated	Documented	2008-03A	Continued avoidance by 30 m buffer or additional mitigation required
KfJm-80	Neoeskimo	Campsite	low to moderate	180 m from Discovery Haul Road	Not Mitigated	Documented	2008-03A	Continued avoidance by 30 m buffer or additional mitigation required
KfJm-84	Neoeskimo	Campsite / grave	high	400 m from Discovery Haul Road	Not Mitigated	4 features mitigated, possible grave staked 2011; elder confirmed grave 2012	2011-026A; 2012-024A	Continued avoidance by 30 m buffer or additional mitigation required
KfJm-87	Neoeskimo	Campsite	low	Reported location 355 m from Discovery Haul Road	Not Mitigated	Site not revisited; location not confirmed	Linnamae and Clark 1975	Continued avoidance by 30 m buffer or additional mitigation required
KfJm-88	Neoeskimo	Campsite	low	Reported location 475 m from Discovery Haul Road	Not Mitigated	Site not revisited; location not confirmed	Linnamae and Clark 1975	Continued avoidance by 30 m buffer or additional mitigation required

**Table 2: Status of Archaeological Sites Located in the All-Weather Access Road Local Study Area**

Borden Number	Cultural Affiliation	Site Type	Archaeological Significance	Distance from Development	Status of Site	Details of Status	Permit Report Detailing Status	Recommendations
KfJm-93	Neoeskimo	Campsite	low	370 m from Discovery Haul Road	Mitigated	Photography, feature mapping, test units and shovel tests	2008-03A; 2011-026A	No further work
KfJm-99	Neoeskimo	Stone marker / inuksuk	low	290 m from Discovery Haul Road	Not Mitigated	Documented	2008-03A	Continued avoidance by 30 m buffer or additional mitigation required
KfJm-101	Undetermined	Unknown	Unknown	Reported location 330 m from Discovery Haul Road	Not Mitigated	Site not revisited; location not confirmed	Linnamae and Clark 1975	Continued avoidance by 30 m buffer or additional mitigation required
KfJm-102	Neoeskimo	Campsite	low to moderate	avoidance by 175 m from Discovery Haul Road	Mitigated	Photography, mapping, test excavation and shovel testing	2008-03A; 2011-026A	No further work
KfJm-104	Neoeskimo	Stone marker / inuksuk	low	avoidance by 220 m from Discovery Haul Road	Not Mitigated	Documented	2008-03A	Continued avoidance by 30 m buffer or additional mitigation required
KfJm-109	Undetermined	Unknown	Unknown	Reported location 460 m from AWAR	Not Mitigated	Site not revisited; location not confirmed	Linnamae and Clark 1975	Continued avoidance by 30 m buffer or additional mitigation required
KfJm-110	Neoeskimo	Campsite	low to moderate	215 m from AWAR	Not Mitigated	Documented	2008-03A	Continued avoidance by 30 m buffer or additional mitigation required
KfJm-112	Undetermined	Unknown	Unknown	Reported location 230 m from AWAR	Not Mitigated	Site not revisited; location not confirmed	Linnamae and Clark 1975	Continued avoidance by 30 m buffer or additional mitigation required
KfJm-114	Undetermined	Unknown	Unknown	Reported location 440 m from AWAR	Not Mitigated	Site not revisited; location not confirmed	Linnamae and Clark 1975	Continued avoidance by 30 m buffer or additional mitigation required
KfJm-116	Neoeskimo	Caches	low	75 m from AWAR and quarry	Not Mitigated	Documented, staked 2011	2008-003A, 2011-026A, 2012-024A; 2014-016A	Continued avoidance by 30 m buffer or additional mitigation required

**Table 2: Status of Archaeological Sites Located in the All-Weather Access Road Local Study Area**

Borden Number	Cultural Affiliation	Site Type	Archaeological Significance	Distance from Development	Status of Site	Details of Status	Permit Report Detailing Status	Recommendations
KfJm-118	Neoeskimo	Stone feature	low to moderate	0 m from AWAR	Mitigated	Photo documentation, feature mapping, proportional excavation	2011-026A	No further work
KfJm-128	Neoeskimo	Hunting	low	150 m from AWAR	Not Mitigated	Documented	2011-026A	Continued avoidance by 30 m buffer or additional mitigation required
KfJm-131	undetermined	Unknown	Unknown	Reported location 120 m from AWAR	Not Mitigated; Reported site location in error	Site location revisited but no evidence of features	2011-026A	Site not positively identified; Continued avoidance by 30 m buffer or additional mitigation required
KfJm-133	undetermined	Unknown	Unknown	Reported location 80 m from AWAR	Not Mitigated; Reported site location in error	Site location revisited but no evidence of features	2011-026A	Site not positively identified; Continued avoidance by 30 m buffer or additional mitigation required
KfJm-140	undetermined	Unknown	Unknown	Reported location 255 m from Borrow Pit	Not Mitigated	Site not revisited; location not confirmed	Linnaeae and Clark 1975	Continued avoidance by 30 m buffer or additional mitigation required
KfJm-167	Neoeskimo	Hunting	low to moderate	270 m from Discovery Haul Road	Not Mitigated	Documented	2008-03A	Continued avoidance by 30 m buffer or additional mitigation required
KfJm-168	Neoeskimo	Campsite	moderate	50 m from AWAR	Not Mitigated	Documented	2008-03A	Continued avoidance by 30 m buffer or additional mitigation required
KfJm-169	Neoeskimo	Hunting	low to moderate	0 m from AWAR	Mitigated	Photo documentation, feature mapping, proportional excavation	2008-03A; 2010-005A; 2017-014A	No further work
KfJm-170	Neoeskimo	Campsite	low to moderate	40 - 60 m from AWAR, topographic separation	Not Mitigated	Documented	2008-03A; 2017-014A	Continued avoidance by 30 m buffer or additional mitigation required

**Table 2: Status of Archaeological Sites Located in the All-Weather Access Road Local Study Area**

Borden Number	Cultural Affiliation	Site Type	Archaeological Significance	Distance from Development	Status of Site	Details of Status	Permit Report Detailing Status	Recommendations
KfJm-171	Neoeskimo	Campsite	High	0 to 70 m from AWAR	Partially Mitigated	8/21 features photo documented, mapped and excavated; remaining features >30 m from road	2008-03A; 2010-005A, 2012-024A, 2014-016A; 2017-014A	Continued avoidance of non-mitigated features by 30 m buffer or additional mitigation required
KfJm-172	Neoeskimo	Campsite	low to moderate	0 m from AWAR	Mitigated	Photo documentation, feature mapping, proportional excavation	2008-03A; 2010-005A; 2017-014A	No further work
KfJm-173	Neoeskimo	Stone marker / inuksuk	low	150 m from AWAR	Not Mitigated	Documented	2008-003A	Continued avoidance by 30 m buffer or additional mitigation required
KfJm-174	Neoeskimo	Stone marker / inuksuk	low	0 m from Borrow Pit	Mitigated	Photo documentation, feature mapping, proportional excavation	2008-003A; 2010-005A	No further work
KfJm-175	Neoeskimo	Hunting	low	0 m from Borrow Pit	Mitigated	Photo documentation, feature mapping, shovel testing, proportional excavation	2008-003A; 2011-026A	No further work
KfJm-176	Neoeskimo	Caches	Low	20 m from Borrow Pit	Mitigated	Photo and location documentation,	2008-003A, 2014-016A	No further work
KfJm-177	Neoeskimo	Stone marker / inuksuk	low	0 m from Borrow Pit	Mitigated	Photo documentation, proportional excavation	2008-003A, 2011-026A	No further work
KfJm-178	undetermined	Lithic scatter	low	0 m from Borrow Pit	Mitigated	Photo documentation, feature mapping, proportional excavation (2010)	2008-003A, 2010-005A, 2014-016A	No further work
KfJm-179	Palaeoeskimo	Hunting	low to moderate	75 m from AWAR and quarry	Not Mitigated	Documented	2008-003A	Continued avoidance by 30 m buffer or additional mitigation required
KfJm-180	Neoeskimo	Stone marker / inuksuk	low to moderate	240 m from AWAR	Not Mitigated	Documented	2008-003A	Continued avoidance by 30 m buffer or additional mitigation required



**Table 2: Status of Archaeological Sites Located in the All-Weather Access Road Local Study Area**

Borden Number	Cultural Affiliation	Site Type	Archaeological Significance	Distance from Development	Status of Site	Details of Status	Permit Report Detailing Status	Recommendations
KfJm-181	Neoeskimo	Stone marker / inuksuk	low to moderate	153 m from AWAR	Not Mitigated	Documented	2008-003A	Continued avoidance by 30 m buffer or additional mitigation required
KfJm-182	Neoeskimo	Campsite	low	85 m from AWAR	Not Mitigated	Documented and staked 2011	2008-003A, 2011-026A, 2014-016A	Continued avoidance by 30 m buffer or additional mitigation required
KfJm-183	Neoeskimo	Campsite	low to moderate	270 m from AWAR	Not Mitigated	Documented	2008-003A	Continued avoidance by 30 m buffer or additional mitigation required
KfJm-191	Neoeskimo	Hearth	low to moderate	0 m from AWAR	Mitigated	Photo documentation, feature mapping, proportional excavation	2011-026A	No further work
KfJm-192	Neoeskimo	Cache	low	20 m from Discovery Road	Will be impacted	Documented in conflict	2012-024A	Further work prior to development of Discovery Road
KfJm-193	Neoeskimo	Hunting	low	30 m to 40 m from Discovery Road	Will be impacted	Documented in conflict	2012-024A	Further work prior to development of Discovery Road
KfJm-196	Neoeskimo	Stone marker / inuksuk	low	0 m from Quarry B6 expansion	Mitigated	Photo documentation, feature mapping, testing	2016-07A	No further work
KfJm-197	Neoeskimo	Cache	low	0 m from Quarry B6 expansion	Mitigated	Photo documentation, feature mapping, testing	2016-07A	No further work

**Table 3: Status of Archaeological Sites within the Rankin Inlet Local Study Area**

Borden Number	Cultural Affiliation	Site Type	Archaeological Significance	Distance from Development	Status of Site	Details of Status	Permit Report Detailing Status	Recommendations
KeJm-5	Neoeskimo	Hunting site	low to moderate	17 m from Airport Bypass Road; 330 m from re-route	Not Mitigated	Documented	2012-024A; 2016-07A	Continued avoidance by 30 m buffer or additional mitigation required
KeJm-10	Palaeoeskimo	Lithic scatter	low to moderate	Reported location 280 m from Itivia Quarry	Not Mitigated	Site not revisited; location not confirmed	Linnamae 1977	Continued avoidance by 30 m buffer or additional mitigation required
KeJm-11	Neoeskimo	Cache	low to moderate	160 m from Airport Road Bypass re-route	Not Mitigated	Documented	2016-07A	Continued avoidance by 30 m buffer or additional mitigation required
KfJm-194	Neoeskimo	Campsite	low	80 to 240 m from Airport Bypass Road; 130 m from re-route	Not Mitigated	Documented	2012-024A; 2016-07A	Continued avoidance by 30 m buffer or additional mitigation required

## Signature Page

**Golder Associates Ltd.**

**ORIGINAL SIGNED**

Patrick Young, M.A.  
*Archaeologist*

PY/BN/pls/jlb

**ORIGINAL SIGNED**

Brad Novecosky, M.A.  
*Principal, Senior Archaeologist*

Golder and the G logo are trademarks of Golder Associates Corporation

[https://golderassociates.sharepoint.com/sites/26795g/deliverables/2019 archaeological sites update/2019 archaeology sites status update meliadine\\_annual report.docx](https://golderassociates.sharepoint.com/sites/26795g/deliverables/2019%20archaeological%20sites%20update/2019%20archaeology%20sites%20status%20update%20meliadine_annual%20report.docx)



**[golder.com](http://golder.com)**