


APPENDIX 25 2024 TOOLBOX PRESENTATIONS

2024 Toolbox Presentation Counts

Toolbox Topic	Presentation Total
Caribou Migration	14
Waste Management/Fox Talk	19
Spill Reporting Mitigation	4
Freshet	19

A photograph of a herd of caribou in a snowy, open landscape under a clear blue sky. In the foreground, a group of caribou is walking from left to right. In the background, several more caribou are visible on a snow-covered ridge. The scene is bright and clear.

MELIADINE CARIBOU MIGRATION PROTOCOL



AGNICO EAGLE

CARIBOU MIGRATION BASICS

Qamanirjuaq Caribou herd ~ 288 000 individuals

- Yearly migration occurs at Meliadine between early June to mid-July
- Patterns, duration and numbers can vary over the years
- Caribou can travel in groups exceeding 5000 animals
- Agnico Eagle must take all possible measures to avoid disturbing the caribou.
- During migration, a caribou herd will be defined as ≥ 50 individuals for caribou management purposes.



CARIBOU MIGRATION BASICS

During Caribou Migration, Agnico Eagle will:

- Report any caribou sightings;
- Prevent human activities that could disturb the herd;
- Give caribou the “right-of-way”;
- Not block or deter Caribou from moving through the mine site or across the all-weather access road (AWAR).

Decision trees for work and traffic suspension protocols have been developed to manage:

- Monitoring;
- Mitigation measures; and
- Activities during the migration.

Work and traffic suspension depends on:

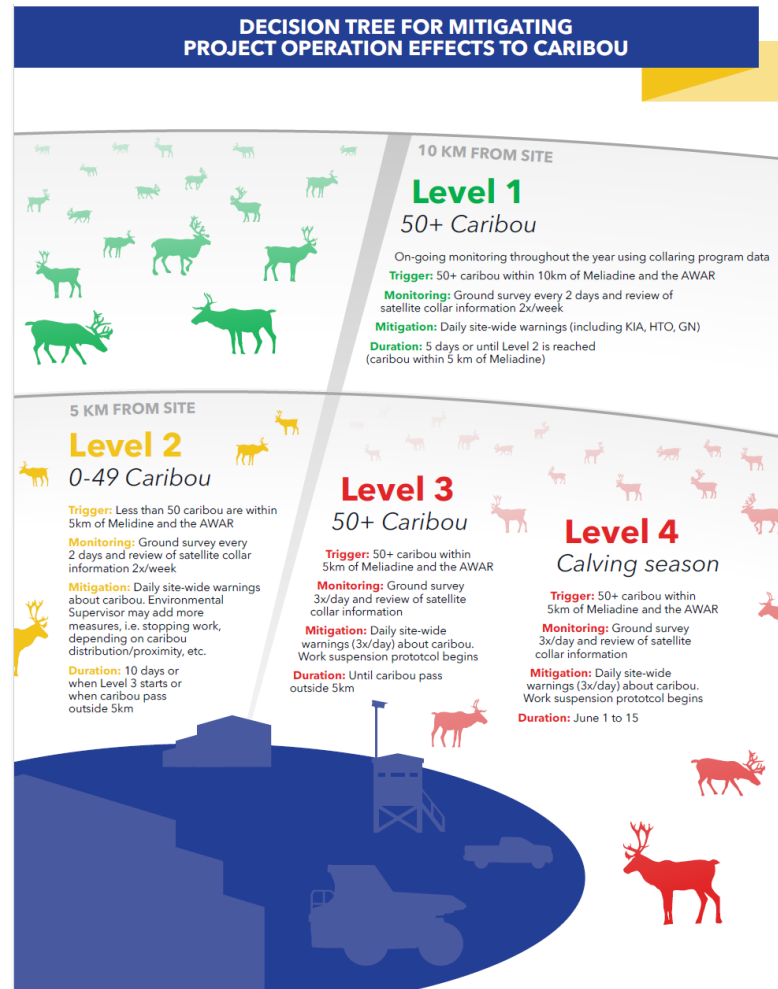
- Number of Caribou; and
- Proximity of Caribou to Meliadine and AWAR.



CARIBOU MIGRATION BASICS

- TEMMP v5 revision is ongoing with TAG parties.
- TEMMP v4 is currently applied.

Light Duty Activities need to be approved on a case to case basis by KivIA.



AGNICO EAGLE

MELIADINE SITE WORK SUSPENSION PROTOCOL



FOR LEVEL 3: In accordance with the IIBA/TEMMP, all off-site and on site-related activities must be stopped once the herd is within a 5 km radius of the Meliadine Site. The related activities include:

- Helicopter flights and drill operations off site* (*when herd is within 5 km of their locations*);
- Surface mining/operations activities such as blasting, transportation to mining areas, hauling of material, and non-essential refueling of equipment. All non-essential light vehicle traffic will be suspended;
- Surface activities related to underground mining such as surface stockpiling of ore or waste with heavy equipment;
- Surface construction activities: outdoor construction development, earthworks, road construction, structural work, non-essential waste deposition, refueling and transportation of equipment;
- Non-essential water management activities;
- Non-essential outdoor camp activities;
- Use of propane wildlife deterrent cannons;
- **Only essential light vehicle traffic (for crew changes and Env. wildlife surveys) will be authorized.**

* - Inform all employees at the drill sites that are in the direction of the caribou during migration, and within 5 km radius of the migration, that they will need to shut down the operations such that the drills and associated helicopter flights can cease as quickly as possible.

- Shutdown will include removal of drill rods from the holes and securing of the drill station.

- Organize transport of the affected personnel to the camp. Personnel that do not require air or road transportation will be requested to walk back.

-During helicopter transport of personnel, the Air Traffic Management Plan (in appendix A) will be applied to protect the caribou herd (avoidance distance of 1,000 m vertical and 1,500 m horizontal).

PERMITTED ACTIVITIES DURING A WORK SUSPENSION



- **Only essential activities to the site function and health and safety will be allowed:**
 - Refueling of essential generators and power supplies;
 - Operation/maintenance of water treatment systems (diesel pumps required to manage CP/SP water levels);
 - Critical inspections required in case of a malfunction;
 - ERT deployment in case of a Code 1;
 - Intervention in case of a reportable spill;
 - Medical treatment or site evacuation of employee;
 - Time-sensitive environmental compliance work;
 - Activity intended to prevent a health and safety or environmental risk.

All activities, not previously approved by the Environment Department, during a Migration Level 3 will require approval by the Mine Manager or acting Manager.

MELIADINE AWAR TRAFFIC SUSPENSION PROTOCOL



FOR LEVEL 3: In accordance with the IIBA/TEMMP, traffic will be suspended or stopped to and from the mine, when 50 caribou or more are within 100 m of the AWAR:

- All vehicle traffic for transport to and from the site will be suspended (road closure) and /or stopped (for wildlife right-of-way) to allow caribou herds to cross the road;
- Wildlife has the right-of-way and vehicles must wait without disturbing their movements;
- The use of the road for operations, mining or construction related activities will cease until caribou herds move outside the 100 m buffer zone along the AWAR.

CREW CHANGE:

- Crew change will be performed when no caribou herds (50 or more) are present within 100 m of the AWAR; delays in flight schedules are planned based off the morning survey;
- Wildlife surveys completed on the AWAR by Environment staff and monitoring data (collaring, observation from gate house, community information) will be used to determine if a crew change will be performed;
- Crew change will be authorized by the Mine Manager or Acting Manager, in consultation with the Environment Department;
- The Environment Department will notify the KIA, GN, and the local HTO to inform them of the road status and if a crew change will be performed;
- Busses will be escorted by the Environment Department personnel to ensure wildlife right-of-way.

“CARIBOU MIGRATION ALERT” NOTIFICATION

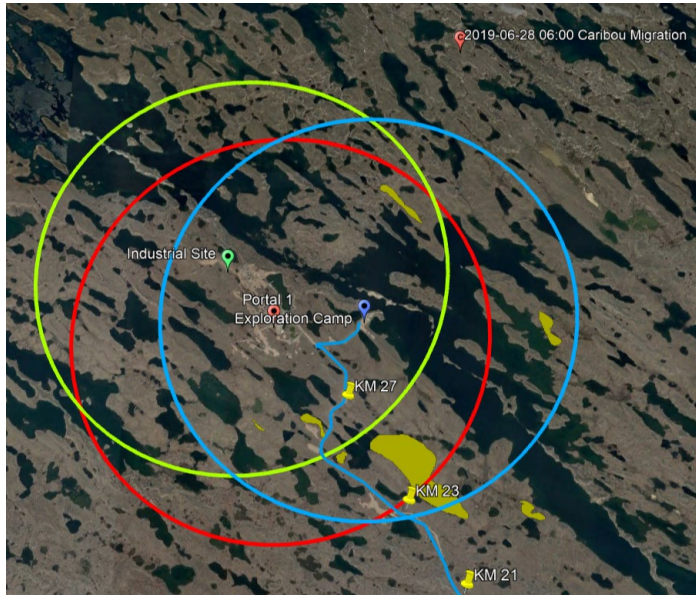


- Following the ground surveys, a “Caribou Migration Alert” will be issued to all Meliadine employees and contractors, as well as the HTO, GN, CIRNAC and KIA.
- The information contained within the notification will include:
 - A map showing where the herd(s) have been observed
 - Where activities are suspended
 - Where activities can resume, if possible
 - Road restrictions (closed/open, speed restrictions)
 - Additional restrictions (light duty in effect?)
- The site restrictions will be based on three distinct protection zones on site: Exploration Camp; Industrial Site; and Portal, as well as the AWAR.
- Itivia is excluded as this area is not part of the typical caribou migration route.
- Site wide radio alert will be made.

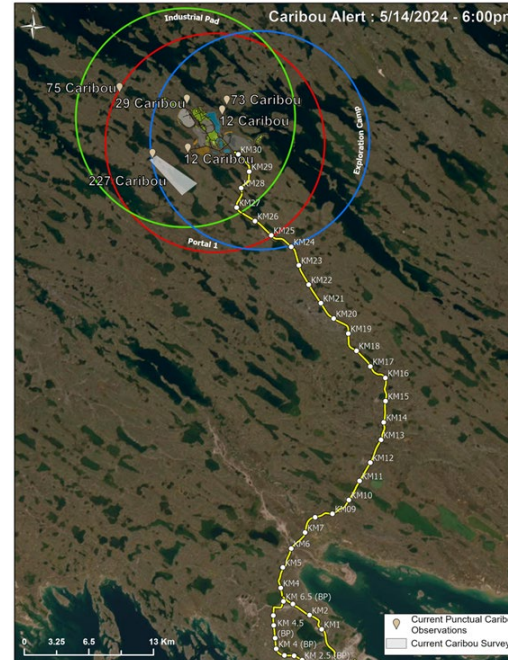
MELIADINE PROJECT PROTECTION ZONES



- Meliadine Site – 5 km protection zones have been identified and include Exploration Camp, Portal 1, and the Industrial Pad.
- AWAR – 100 m within the road



Example of caribou map format for daily maps



EFFECTED STAKEHOLDERS ON THE MELIADINE SITE

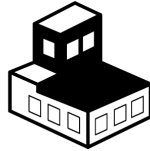
Geology



Logistics



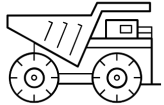
E&I



Mine UG



Process Plant



Mine Open Pit



Regional
Exploration



Communications &
Community Relations



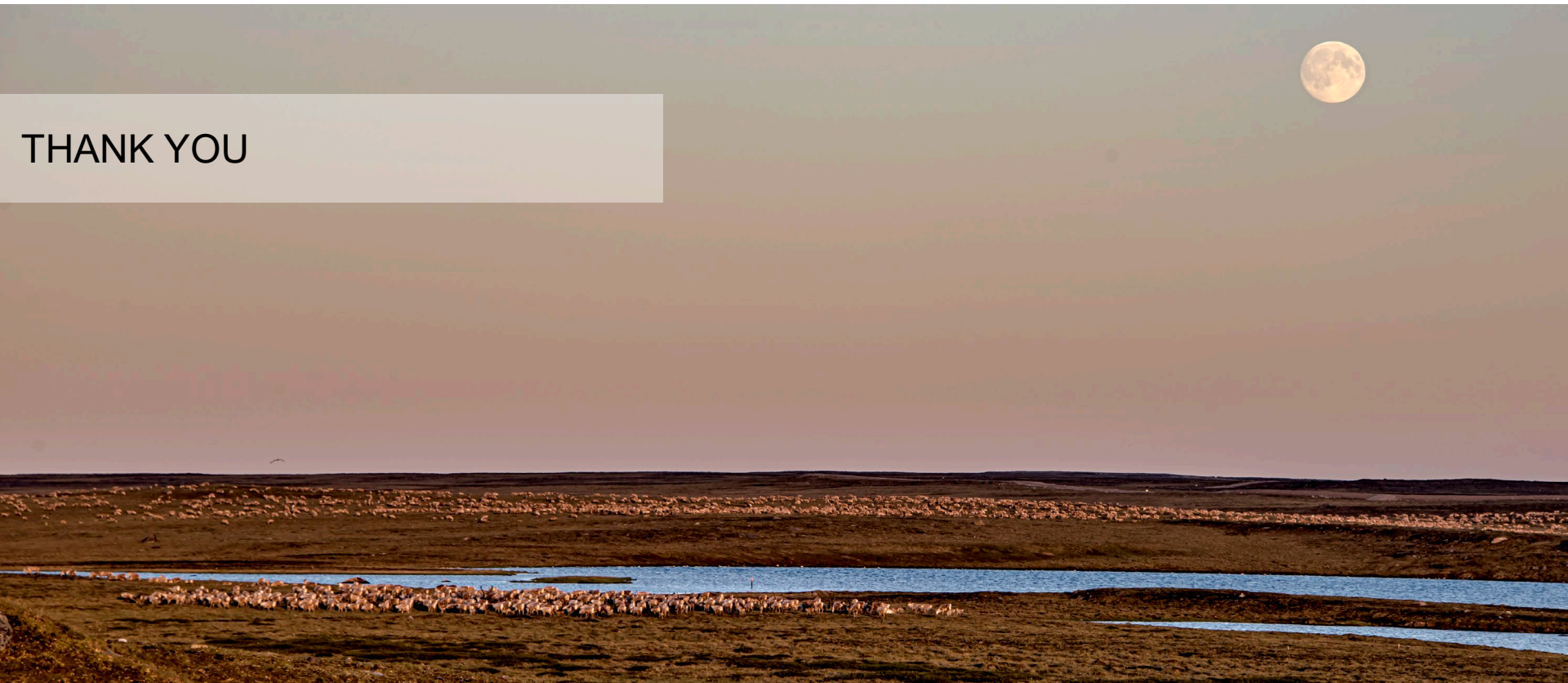
Environment



Construction



THANK YOU





AGNICO EAGLE



MELIADINE WASTE MANAGEMENT STANDARDS

Meliadine



Incorrect Waste Segregation Outcomes

Health hazards

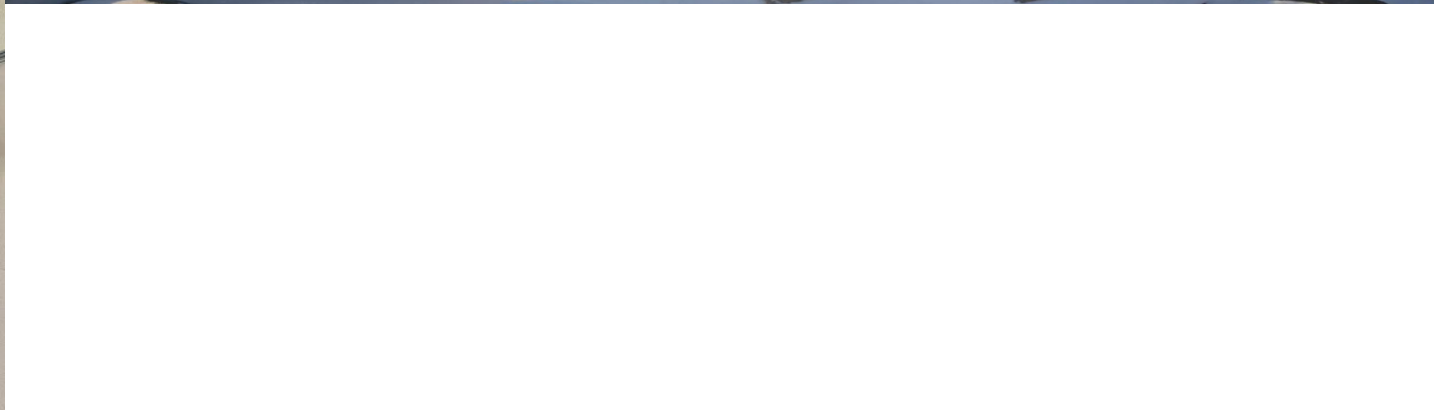
- Compressed cans exploding in the incinerator are a danger for operators;
- Improper waste storage can hurt employees;
- Unlabeled hazardous waste is dangerous for the people who must handle it;
- Increasing wildlife presence on-site and risk of rabies transmission.

Negative impacts on our social license to operate

- Are you managing the waste in your home the same way you are here ?
- It is our responsibility to manage our facility in a way that the community and each of us will be proud to work for.

Wildlife attraction

- A habituated fox is a dead fox



$$\Delta d \triangleleft^c c^b r L \dot{r} r^e \delta^b$$

$\rho \propto d^{\frac{1}{n}} \sigma^{\frac{n-1}{n}}$



ከጋራ ምክር ቤቱ ጋር



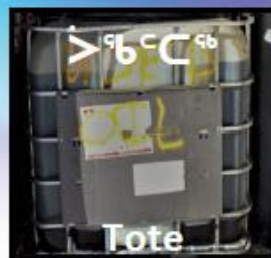
Burn Area

Sorted into a separate container

Hazardous Waste

[illegible]

Oil Filters	Oily Solids
Oily Water	Waste Oil
Grease	Waste Fuel
Glycol Waste	Paint Waste
Aerosols	Compressed Foam
Batteries	Compressed Gas
Electronic Waste	Fluorescent Lights



Hazardous Waste Laydown

$\triangleright \cup \triangleleft \leq^b \supset \triangleleft^b \subset \dot{\cup} \leq^b$



Shipped Offsite

◀▷⁻ℓ^{6b}∩C▷[†]Δσ▷[†]Γ^μΓ^c⊂J^c

When a tote, drum or quatrex bag is full, ensure it is **labelled and closed properly**. Then contact E&I Operations for pick up, the item will be brought to the hazardous waste laydown.

[illegible]

Sorted into a separate container



ΔdΔ^cc^bu^cu^cΔ^bcΔ^c

Food
Food Containers
Food Wrappings
Medical Waste
Plastic
Styrofoam
Paper Products

$\sigma^c \rho^c$
 $\sigma^c \rho^c >^c$
 $\sigma^c \rho^c >^{cb} \rho^c \dot{\rho}^c$
 $\Delta^c \Delta^{cb} \Delta^c \sigma^c \rho^c \Delta^c \Delta^c \Delta^c$
 $\Delta^c \Delta^c \rho^c \rho^c$
 $\rho^c \Delta^c \rho^c \Delta^c$
 $\Delta^c \Delta^c \rho^c \Delta^c$



Incinerator
 $\Delta d \ll \epsilon^b \eta^c \eta^{\prime} \chi \eta \eta^c$

[illegible]

△Γ△^bδ△^cε△^c



$\nabla^b \zeta \nabla \delta^\epsilon$


$$\sigma \triangleright^{cb} b_L \mathfrak{m}^c \Delta \Gamma_L \mathfrak{m}^c \mathfrak{h}^c$$


Shipped Offsite

◀▷^c c^{sb} nC▷^c Δσ▷^c Γ^{ae} Γ^c J^c

Sorted into a separate container

 $\Delta^{\text{C}} \rho^{\text{b}} / \rho^{\text{c}} C_D r^{\text{C}} \Delta T^{\text{C}} \Delta t^{\text{C}} > \epsilon^{\text{J}} J^{\text{C}}$

 $\Delta^b C d \Delta^c$ [illegible]

NO FOOD GARBAGE

σ^cρσ^b Δ^bCd^cΔ▷_ℓΔ^cℓ^{ac}Γ^c▷^c_ℓ



Landfill

 $\Delta^b \subset \Delta^c$

It is important to ensure no food garbage is mixed with landfill waste. Food garbage in the landfill attracts wildlife.

[illegible]



Help us help
you!

- Do you have all the tools to segregate your waste ?
- Are all bins in your work area labeled ?
- Do you have any concerns or questions regarding waste management?
- Do you have any inputs/ideas on how we could improve waste management in your work area/on-site ?