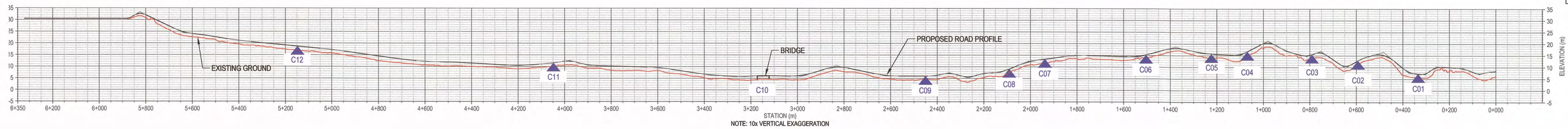


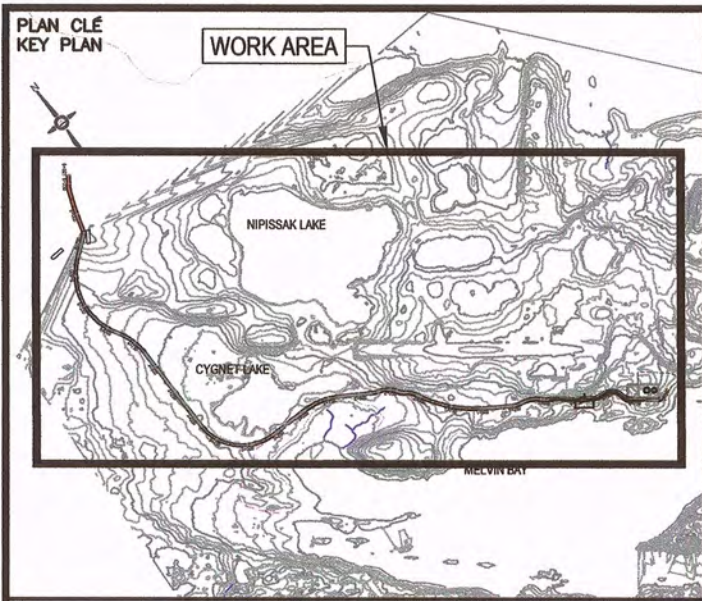
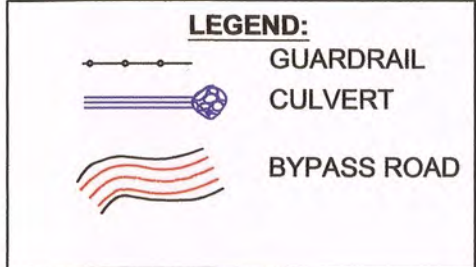
# **APPENDIX B**

## Construction drawings





131-Hamlet Bypass road



NOTES GÉNÉRALES / GENERAL NOTES

- GENERAL NOTES:
- EXISTING GROUND DTM PROVIDED BY AEM.
  - ALL UNITS ARE IN METERS.
  - ELEVATIONS IN DRAWING PROVIDE FINISHED GRADE ELEVATIONS AT THE TOP OF THE SURFACE GRAVEL LAYER.
  - THE CONTRACTOR SHALL BE RESPONSIBLE FOR THE SAFETY, SECURITY AND SLOPES OF ALL EXCAVATIONS/ BACKFILL, AND SHALL ABIDE BY ALL RELEVANT STANDARDS AND REGULATIONS. THE STABILITY, DEWATERING AND MAINTENANCE OF ALL EXCAVATIONS SHALL BE THE CONTRACTOR'S RESPONSIBILITY.
  - GRANULAR MATERIAL SHALL BE PLACED IN LIFTS NOT EXCEEDING 300mm AND COMPACTED TO A MINIMUM OF 95% OF MAXIMUM DRY DENSITY (MODIFIED PROCTOR). BORROW PIT MATERIAL, GRANULAR FILL MATERIAL 0-600 mm OR OVERBURDEN MATERIAL SHALL BE PLACED IN LIFTS NOT EXCEEDING 600mm AND COMPACTED TO A MINIMUM OF 90% OF MAXIMUM DRY DENSITY (MODIFIED PROCTOR). MOISTURE CONDITIONING MAY BE REQUIRED PRIOR TO COMPACTION.
  - OVERBURDEN MATERIAL CAN BE USED FOR FILL IN SPECIFIED AREAS ONLY WHEN APPROVED BY FIELD GEOTECHNICAL ENGINEER.
  - AN AS-BUILT DRAWING SHALL BE PROVIDED AFTER CONSTRUCTION.
  - THE LOCATION, ELEVATION AND LENGTH OF CULVERT GROUP SHALL BE CONFIRMED ON SITE.
  - THE BRIDGE AND ABUTMENTS, WITH THE EXCEPTION OF BACKFILL, SHALL BE PROVIDED BY OTHERS.
  - CONTRACTOR SHALL INSTALL THE BRIDGE AND ABUTMENTS AS THE RECOMMENDATIONS AND SPECIFICATIONS OF THE SUPPLIER.
  - NO EQUIPMENT CAN BE STORED AND NO DEPOSITION OF EXCAVATED AND STOCKPILED MATERIALS CAN BE DONE WITHIN THE LICENCE "A" - LIMIT OF WORK (31M) LINE.
  - FOR SUMMER CONSTRUCTION, GEOTEXTILE SHALL BE INSTALLED BETWEEN THE ORIGINAL GROUND AND THE GRANULAR MATERIAL WHEREVER THE ORIGINAL GROUND IS UNSTABLE TO SUPPORT FILL MATERIAL COMPACTION.

INFORMATION (SI-CONTENU) EST LA PROPRIÉTÉ DE AGNICO EAGLE LTD ET DOIT ÊTRE RETENUE PAR LE CLIENT. Toute réimpression ou utilisation non autorisée sans la permission écrite de la société AGNICO EAGLE LTD est formellement interdite. Toute violation de cette interdiction sera poursuivie. Toute réimpression ou utilisation non autorisée sans la permission écrite de la société AGNICO EAGLE LTD est formellement interdite. Toute violation de cette interdiction sera poursuivie.

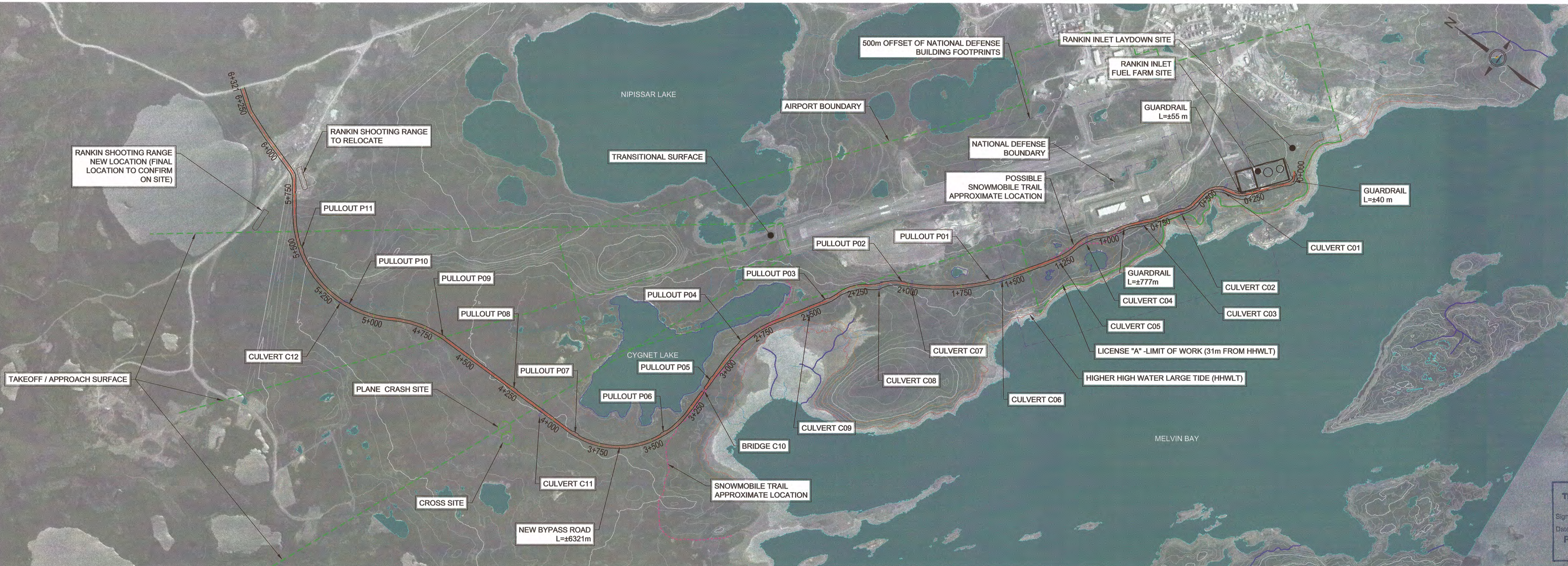
DESSINS EN RÉFÉRENCE / REFERENCE DRAWINGS	TITRE / TITLE	# DWG
---	---	---
---	---	---
---	---	---
---	---	---
---	---	---



REV.	DATE	DESCRIPTION	PAR/APP.	CLIENT
O	2017-03-17	ISSUED FOR CONSTRUCTION	C.M.	J.A.
C	2017-03-14	ISSUED FOR PERMIT	C.M.	J.A.
B	2017-02-24	ISSUED FOR TENDER	M.V.	J.A.
A	2016-12-08	ISSUED FOR PRELIMINARY	P.H.	J.A.

**REVISIONS**

Signature: *[Signature]*  
Date: 2017-03-17  
PERMIT NUMBER: P 1029  
J.M.F. ALARIE  
J.M.F. ALARIE  
2017-03-17



QUANTITY CONSTRUCTION CHART*										
*THEORETICAL MEASURE IN PLACE QUANTITIES										
AGGREGATE MATERIAL	RANKIN INLET BYPASS ROAD		GUARDRAIL SHOULDER		CULVERTS		ABUTMENTS		OVERALL	
	AREA: 102 005 m <sup>2</sup>		AREA: 2 570 m <sup>2</sup>		AREA: N/A		AREA: N/A		AREA: 104 575 m <sup>2</sup>	
	AVE. THICKNESS (mm)	REQUIRED (m <sup>3</sup> )	AVE. THICKNESS (mm)	REQUIRED (m <sup>3</sup> )	AVE. THICKNESS (mm)	REQUIRED (m <sup>3</sup> )	AVE. THICKNESS (mm)	REQUIRED (m <sup>3</sup> )	AVE. THICKNESS (mm)	REQUIRED (m <sup>3</sup> )
CL.A. OR GRANULAR MATERIAL APPROVED (0-600 mm) OR OVERBURDEN MATERIAL	-	-	2,171	5,580	-	-	-	-	-	5,580
CL.A. OR GRANULAR MATERIAL (0-600 mm)	1,210	116,350	-	-	-	-	-	-	-	116,350
GRANULAR MATERIAL (0-30 mm)	-	-	-	-	-	-	-	400	-	400
GRANULAR MATERIAL (0-50 mm)	150	7,010	-	-	-	3,390	-	-	-	10,400
RIP RAP (50-300 mm)	-	-	-	-	-	420	-	-	-	420
RIP RAP FOR TOE OF EMBANKMENT (600 - 1000 mm)	-	760	-	-	-	-	-	-	-	760
TOTAL		124,120		5,580		3,810		400		133,910

**PERMIT TO PRACTICE**  
TETRA TECH INDUSTRIES, INC.  
O/A TETRA TECH

Signature: *[Signature]*  
Date: 2017-03-17  
PERMIT NUMBER: P 1029  
J.M.F. ALARIE  
J.M.F. ALARIE  
2017-03-17

**REVISIONS**

Signature: *[Signature]*  
Date: 2017-03-17  
PERMIT NUMBER: P 1029  
J.M.F. ALARIE  
J.M.F. ALARIE  
2017-03-17

**AGNICO EAGLE - MELJADINE DIVISION**  
117 - ROADS, FENCES, AND YARDS  
230 - GENERAL EARTH WORKS  
RANKIN INLET BYPASS ROAD  
PLAN / PROFILE  
GENERAL OVERVIEW

DESSIN PAR: PATRICK HAMEL  
VÉRIFIÉ PAR: SOLENE MOREAU  
APPROUVÉ PAR: JOSÉE ALARIE

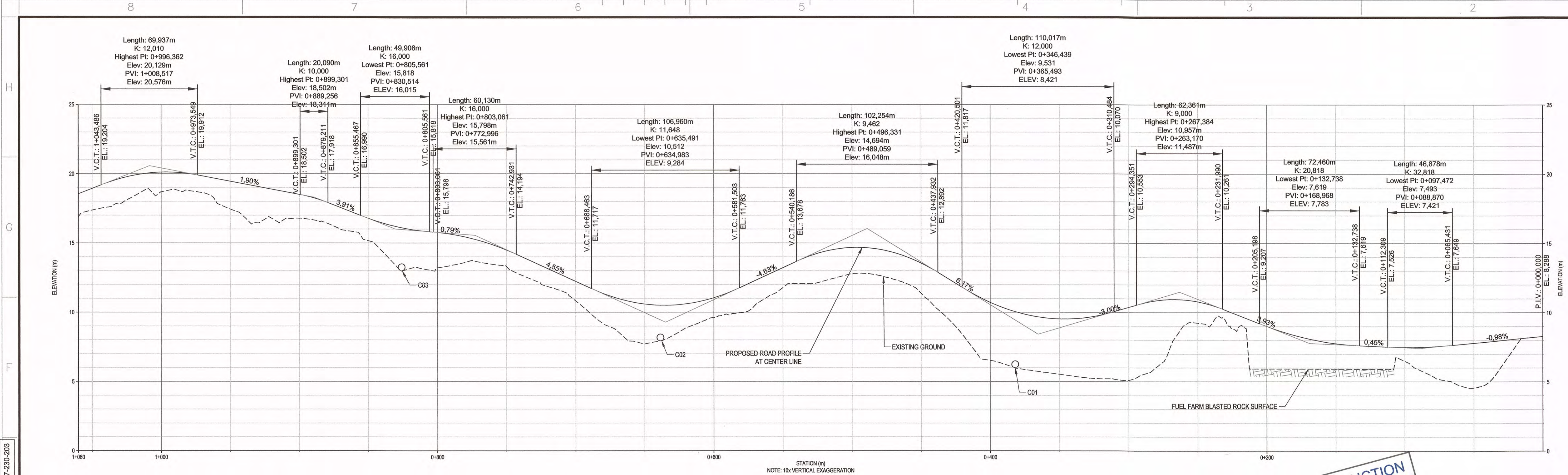
DATE: 2017-03-17  
DATE: 2017-03-17  
DATE: 2017-03-17

ÉCHELLE: 1:10000  
DATE: 2016-11-07

NO. DESSIN: 65-117-230-201

NO. PROJET: 6515 / 28920  
REVISION: 0  
FEUILLE: 1 / 1

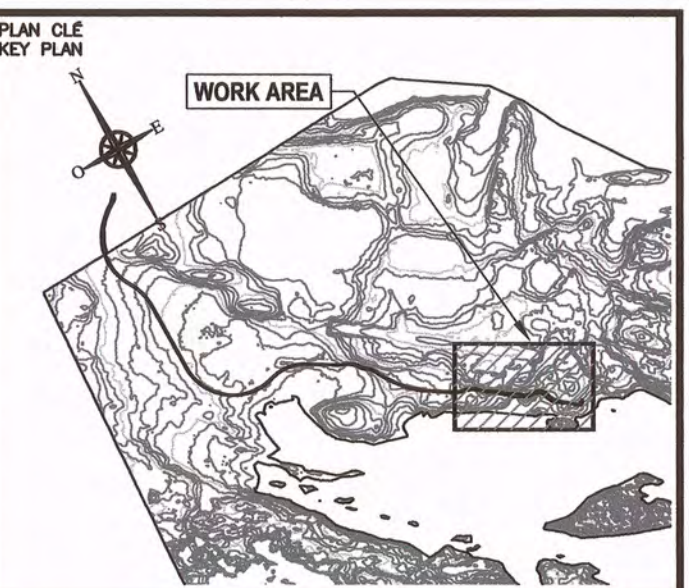




PROFILE  
SCALE HOR.: 1:1500  
SCALE VER.: 1:150

POUR CONSTRUCTION  
FOR CONSTRUCTION  
AGNICO EAGLE  
DATE : 2017-03-17

LEGEND:  
— GUARDRAIL  
— CULVERT  
— BYPASS ROAD



NOTES GENERALES / GENERAL NOTES

- GENERAL NOTES:
- EXISTING GROUND DTM PROVIDED BY AEM.
  - ALL UNITS ARE IN METERS.
  - ELEVATIONS IN DRAWING PROVIDE FINISHED GRADE ELEVATIONS AT THE TOP OF THE SURFACE GRAVEL LAYER.
  - THE CONTRACTOR SHALL BE RESPONSIBLE FOR THE SAFETY, SECURITY AND SLOPES OF ALL EXCAVATIONS/BACKFILL AND SHALL ABIDE BY ALL RELEVANT STANDARDS AND REGULATIONS. THE STABILITY, DEWATERING AND MAINTENANCE OF ALL EXCAVATIONS SHALL BE THE CONTRACTOR'S RESPONSIBILITY.
  - GRANULAR MATERIAL 0-30 mm OR 0-50 mm SHALL BE PLACED IN LIFTS NOT EXCEEDING 300 mm AND COMPACTED TO A MINIMUM OF 95% OF MAXIMUM DRY DENSITY (MODIFIED PROCTOR). BORROW PIT MATERIAL, GRANULAR FILL MATERIAL 0-600 mm OR OVERBURDEN MATERIAL SHALL BE PLACED IN LIFTS NOT EXCEEDING 800 mm AND COMPACTED TO A MINIMUM OF 95% OF MAXIMUM DRY DENSITY (MODIFIED PROCTOR). MOISTURE CONDITIONING MAY BE REQUIRED PRIOR TO COMPACTION.
  - OVERBURDEN MATERIAL CAN BE USED FOR FILL IN SPECIFIED AREAS ONLY WHEN APPROVED BY FIELD GEOTECHNICAL ENGINEER.
  - AN AS-BUILT DRAWING SHALL BE PROVIDED AFTER CONSTRUCTION.
  - THE LOCATION, ELEVATION AND LENGTH OF CULVERT GROUP SHALL BE CONFIRMED ON SITE.
  - THE BRIDGE AND ABUTMENTS, WITH THE EXCEPTION OF BACKFILL, SHALL BE PROVIDED BY OTHERS.
  - CONTRACTOR SHALL INSTALL THE BRIDGE AND ABUTMENTS AS THE RECOMMENDATIONS AND SPECIFICATIONS OF THE SUPPLIER.
  - NO EQUIPMENT CAN BE STORED AND NO DEPOSITION OF EXCAVATED AND STOCKPILED MATERIALS CAN BE DONE WITHIN THE LICENCE "A" - LIMIT OF WORK (31M) LINE.
  - FOR SUMMER CONSTRUCTION, GEOTEXTILE SHALL BE INSTALLED BETWEEN THE ORIGINAL GROUND AND THE GRANULAR MATERIAL WHEREVER THE ORIGINAL GROUND IS UNSTABLE TO SUPPORT FILL MATERIAL COMPACTION.

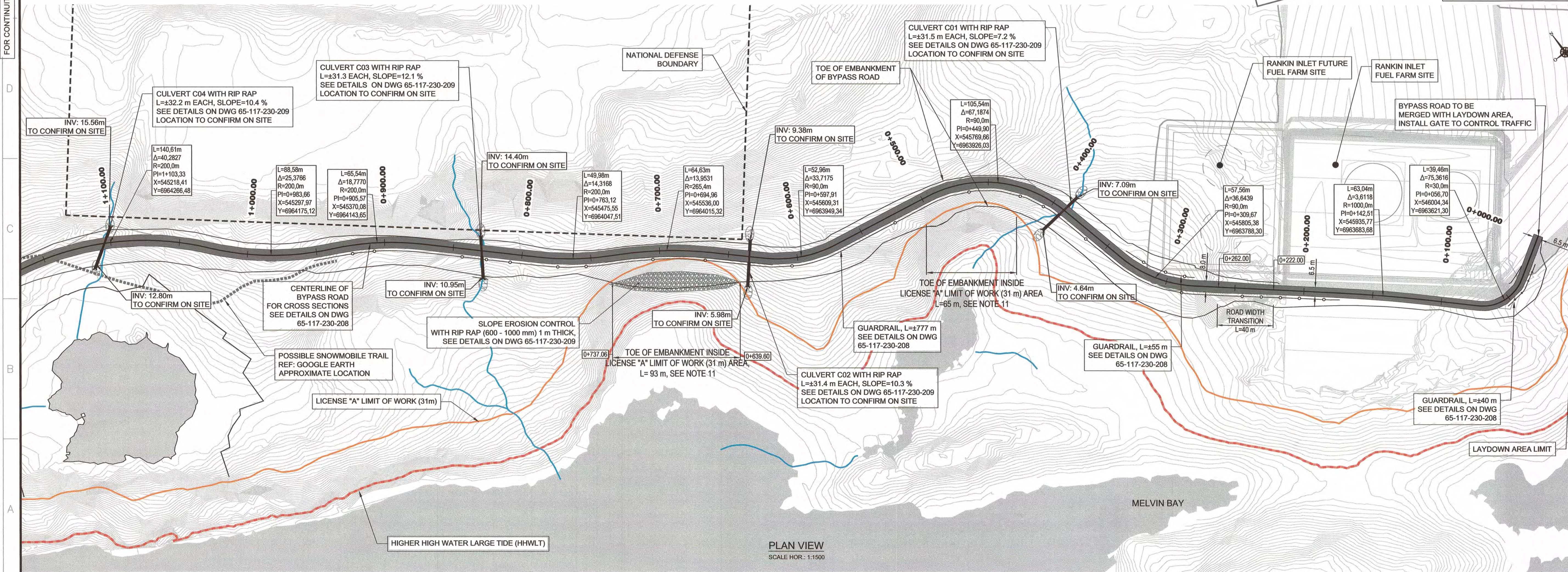
CONTRACTOR IS ADVISED THAT THE PROJECT IS SUBJECT TO AGNICO EAGLE'S SITE USE AND THAT THE RELEVANT SURROUNDING LANDS ARE NOT BEING DEVELOPED FOR OTHER PURPOSES. THE CONTRACTOR SHALL BE RESPONSIBLE FOR THE SAFETY, SECURITY AND SLOPES OF ALL EXCAVATIONS/BACKFILL AND SHALL ABIDE BY ALL RELEVANT STANDARDS AND REGULATIONS. THE STABILITY, DEWATERING AND MAINTENANCE OF ALL EXCAVATIONS SHALL BE THE CONTRACTOR'S RESPONSIBILITY.

DESSINS EN RÉFÉRENCE / REFERENCE DRAWINGS	
TITLE / TITRE	# DWG
—	—
—	—
—	—
—	—
—	—



REVISIONS	
REV.	DATE
0	2017-03-17
1	2017-03-17
2	2017-03-17
3	2017-03-17
4	2017-03-17
5	2017-03-17
6	2017-03-17
7	2017-03-17
8	2017-03-17
9	2017-03-17
10	2017-03-17
11	2017-03-17
12	2017-03-17
13	2017-03-17
14	2017-03-17
15	2017-03-17
16	2017-03-17
17	2017-03-17
18	2017-03-17
19	2017-03-17
20	2017-03-17
21	2017-03-17
22	2017-03-17
23	2017-03-17
24	2017-03-17
25	2017-03-17
26	2017-03-17
27	2017-03-17
28	2017-03-17
29	2017-03-17
30	2017-03-17
31	2017-03-17
32	2017-03-17
33	2017-03-17
34	2017-03-17
35	2017-03-17
36	2017-03-17
37	2017-03-17
38	2017-03-17
39	2017-03-17
40	2017-03-17
41	2017-03-17
42	2017-03-17
43	2017-03-17
44	2017-03-17
45	2017-03-17
46	2017-03-17
47	2017-03-17
48	2017-03-17
49	2017-03-17
50	2017-03-17
51	2017-03-17
52	2017-03-17
53	2017-03-17
54	2017-03-17
55	2017-03-17
56	2017-03-17
57	2017-03-17
58	2017-03-17
59	2017-03-17
60	2017-03-17
61	2017-03-17
62	2017-03-17
63	2017-03-17
64	2017-03-17
65	2017-03-17
66	2017-03-17
67	2017-03-17
68	2017-03-17
69	2017-03-17
70	2017-03-17
71	2017-03-17
72	2017-03-17
73	2017-03-17
74	2017-03-17
75	2017-03-17
76	2017-03-17
77	2017-03-17
78	2017-03-17
79	2017-03-17
80	2017-03-17
81	2017-03-17
82	2017-03-17
83	2017-03-17
84	2017-03-17
85	2017-03-17
86	2017-03-17
87	2017-03-17
88	2017-03-17
89	2017-03-17
90	2017-03-17
91	2017-03-17
92	2017-03-17
93	2017-03-17
94	2017-03-17
95	2017-03-17
96	2017-03-17
97	2017-03-17
98	2017-03-17
99	2017-03-17
100	2017-03-17

REVISIONS	
REV.	DATE
0	2017-03-17
1	2017-03-17
2	2017-03-17
3	2017-03-17
4	2017-03-17
5	2017-03-17
6	2017-03-17
7	2017-03-17
8	2017-03-17
9	2017-03-17
10	2017-03-17
11	2017-03-17
12	2017-03-17
13	2017-03-17
14	2017-03-17
15	2017-03-17
16	2017-03-17
17	2017-03-17
18	2017-03-17
19	2017-03-17
20	2017-03-17
21	2017-03-17
22	2017-03-17
23	2017-03-17
24	2017-03-17
25	2017-03-17
26	2017-03-17
27	2017-03-17
28	2017-03-17
29	2017-03-17
30	2017-03-17
31	2017-03-17
32	2017-03-17
33	2017-03-17
34	2017-03-17
35	2017-03-17
36	2017-03-17
37	2017-03-17
38	2017-03-17
39	2017-03-17
40	2017-03-17
41	2017-03-17
42	2017-03-17
43	2017-03-17
44	2017-03-17
45	2017-03-17
46	2017-03-17
47	2017-03-17
48	2017-03-17
49	2017-03-17
50	2017-03-17
51	2017-03-17
52	2017-03-17
53	2017-03-17
54	2017-03-17
55	2017-03-17
56	2017-03-17
57	2017-03-17
58	2017-03-17
59	2017-03-17
60	2017-03-17
61	2017-03-17
62	2017-03-17
63	2017-03-17
64	2017-03-17
65	2017-03-17
66	2017-03-17
67	2017-03-17
68	2017-03-17
69	2017-03-17
70	2017-03-17
71	2017-03-17
72	2017-03-17
73	2017-03-17
74	2017-03-17
75	2017-03-17
76	2017-03-17
77	2017-03-17
78	2017-03-17
79	2017-03-17
80	2017-03-17
81	2017-03-17
82	2017-03-17
83	2017-03-17
84	2017-03-17
85	2017-03-17
86	2017-03-17
87	2017-03-17
88	2017-03-17
89	2017-03-17
90	2017-03-17
91	2017-03-17
92	2017-03-17
93	2017-03-17
94	2017-03-17
95	2017-03-17
96	2017-03-17
97	2017-03-17
98	2017-03-17
99	2017-03-17
100	2017-03-17



PLAN VIEW  
SCALE HOR.: 1:1500