

# FLOTATION MODULES PV-PMF

## The Concept

Technosub's range of pump flotation modules has been developed to provide a light-weight and cost-effective alternative to the traditional steel pontoon.

## General Applications

Pump Flotation Modules can be supplied to suit ALL Dewatering pumps.

Applications include:

- Mine dewatering
- Tailing dams
- Underground dams
- Sewage treatment
- Aeration ponds
- Floating foundation displays
- Construction site dewatering

## Installation

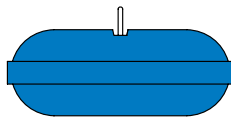
The pump and integral module can be simply installed by use of a central lifting attachment. Once in the water, the module can be towed by boat, if required, and secured in position by anchor or guy ropes. The float module remains visible above the water surface for easy recovery.

## Design Features

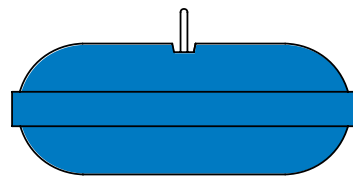
- Compact and lightweight
- Easily mounted to pumps on site
- Lifting points for easy installation
- Easy to transport as an integral unit
- Foam filled to prevent sinking

By having the pump floating close to the surface, it increases service life through reduced maintenance since it is no longer working in a high solids environment.

	PV-PFM 200	PV-PFM 1150
Float dimensions (mm - approximate)	1000 x 1000 x 450	1800 x 1800 x 760
Pump mounting bracket	Stainless steel	Galvanized steel
Weight (approximate) including brackets	68 kg to 78 kg	257 kg to 300 kg
Maximum Pump Weight	450 lbs / 205 kg	2500 lbs - 1100 kg



PV-PFM 200



PV-PFM 1150



4

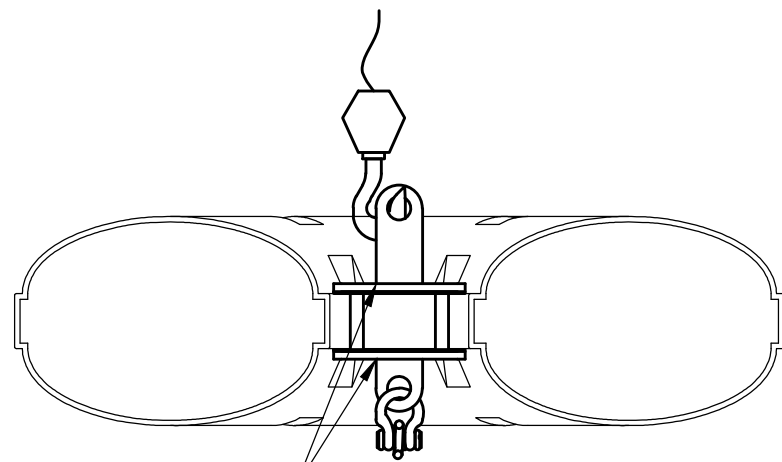
3

2

1

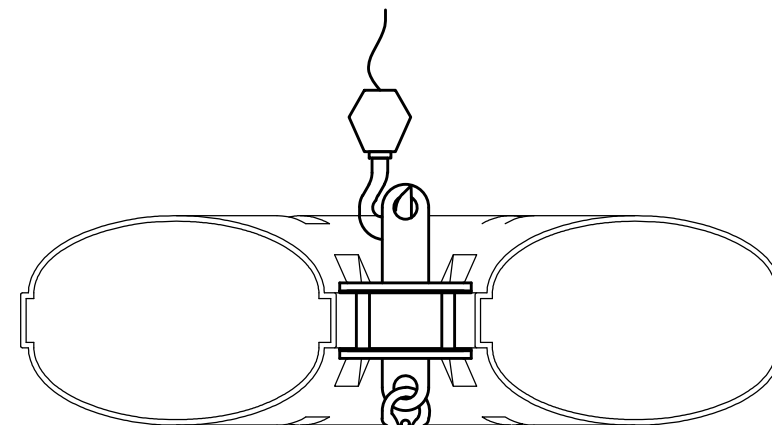
B

B



INSTALL THE MOUNTING  
BRACKET SO THE LIFTING  
LUGS ARE PARALLEL

NOTE: USE THE SIDE CHAIN TO LIFT THE  
FLOAT AND ATTACH THE PUMP UNDER THE  
FLOAT. NEVER STAND BELOW THE CHARGE.



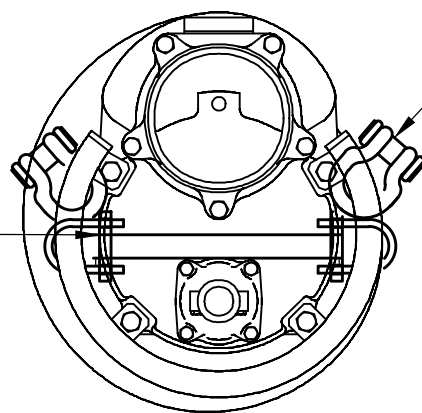
A

A

A

RETAINER  
GUARD

SHACKLE TO ATTACH THE  
CHAINS



A DÉTAIL A  
1-1/2" = 1'-0"

<b>Techno</b> sub		CLIENT: <b>Flotation Modules PV-PMF-200</b>		
PROJECT NO:		Installation plan for mounting bracket - Floating Device		
DRAWN: Y. DEMONTIGNY	2016-12-15	SIZE <b>B</b>	DRAWING NO:	REV. <b>0</b>
CHECKED: R. MANTHA	2016-12-15			
APPROUVÉ:		SCALE: 1-1/2"	WEIGHT:	SHEET: 1 DE 1

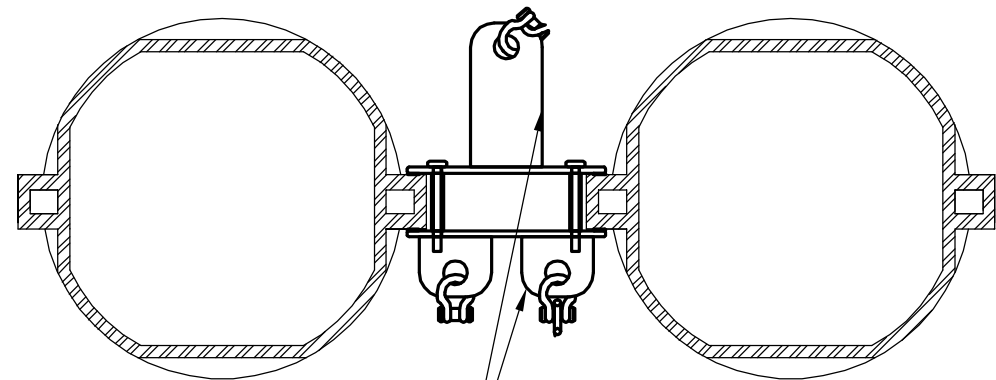
4

3

2

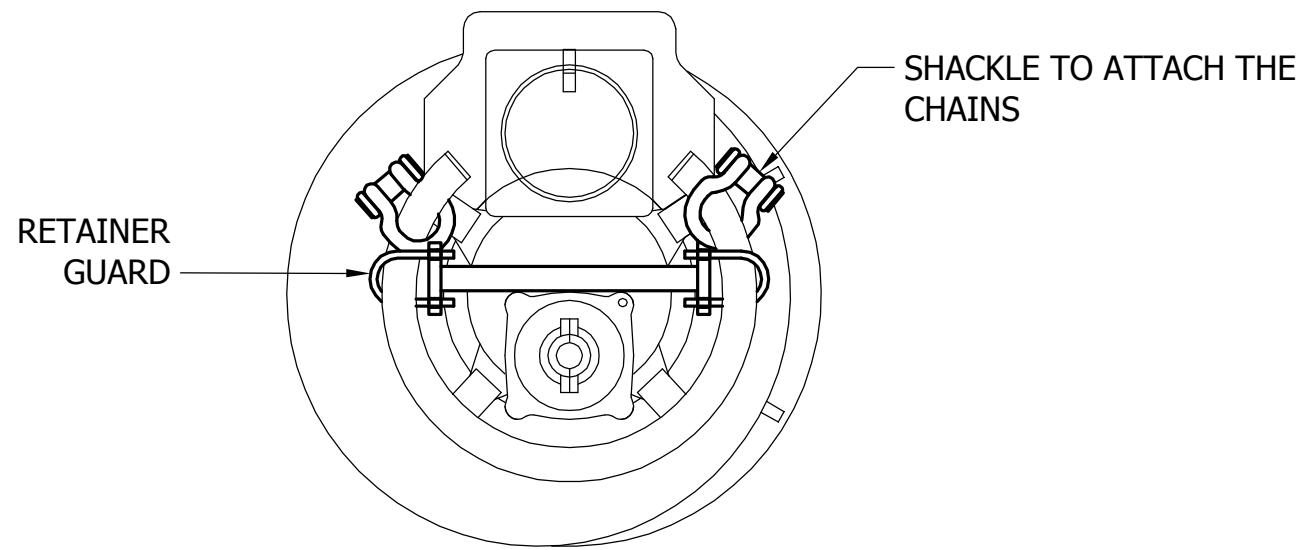
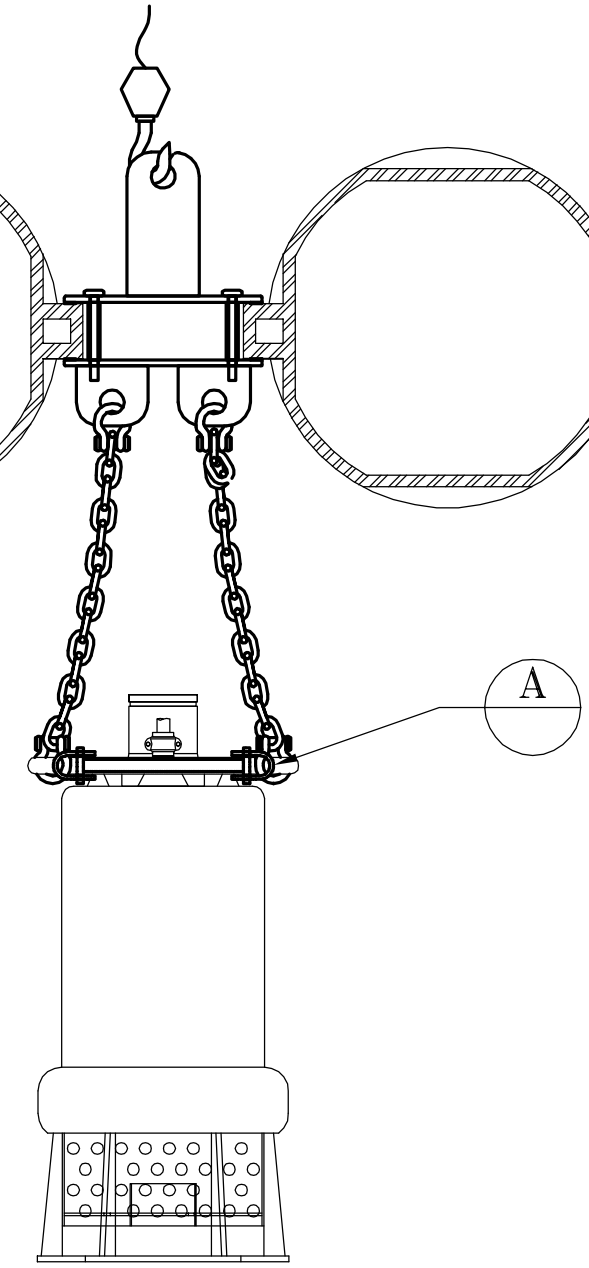
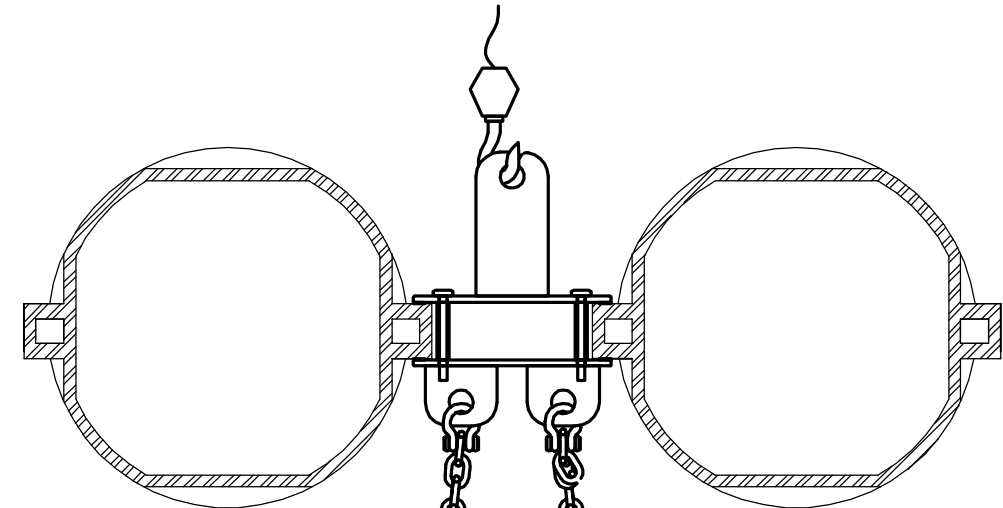
1

A




INSTALL THE MOUNTING  
BRACKET SO THE LIFTING  
LUGS ARE PARALLEL

NOTE: USE THE SIDE CHAIN TO LIFT THE  
FLOAT AND ATTACH THE PUMP UNDER THE  
FLOAT. NEVER STAND BELOW THE CHARGE.



**A** **DETAIL A**  
1-1/2" = 1'-0"

		CLIENT: <b>Flotation Modules PV-PMF-1150</b>	
		Installation plan for mounting bracket Floating device	
PROJECT NO: <b>Floating device</b>		SIZE <b>B</b>	DRAWING NO: <b>TECH-000593</b>
DRAWN: J. DESHAIES	2015-08-07	SCALE: 1-1/2"	REV. <b>0</b>
CHECKED: É. LAMONTAGNE	2015-08-07	WEIGHT:	SHEET: 1 OF 1
APPROVED: D. LALIBERTÉ	2015-08-07		