



Photo 19: Deploying Phase 1 liner (within the key trench) from Station 0+522 to 0+532
View from Station 0+545 facing down chainage



Photo 20: Looking at Phase 1 liner placed between Station 0+545 and 0+585
View from Station 0+585 facing down chainage



Photo 21: Previously placed Phase 2 liner that was welded to Elev. 66 m being flipped to finalise the construction of downstream material to final elevation
View from Station 1+490 facing down chainage



Photo 22: Placing downstream materials (Types A1, B and C) to final elevation for liner panels to be flipped back and placed on it and welded to top.
View from Station 1+500 facing down chainage

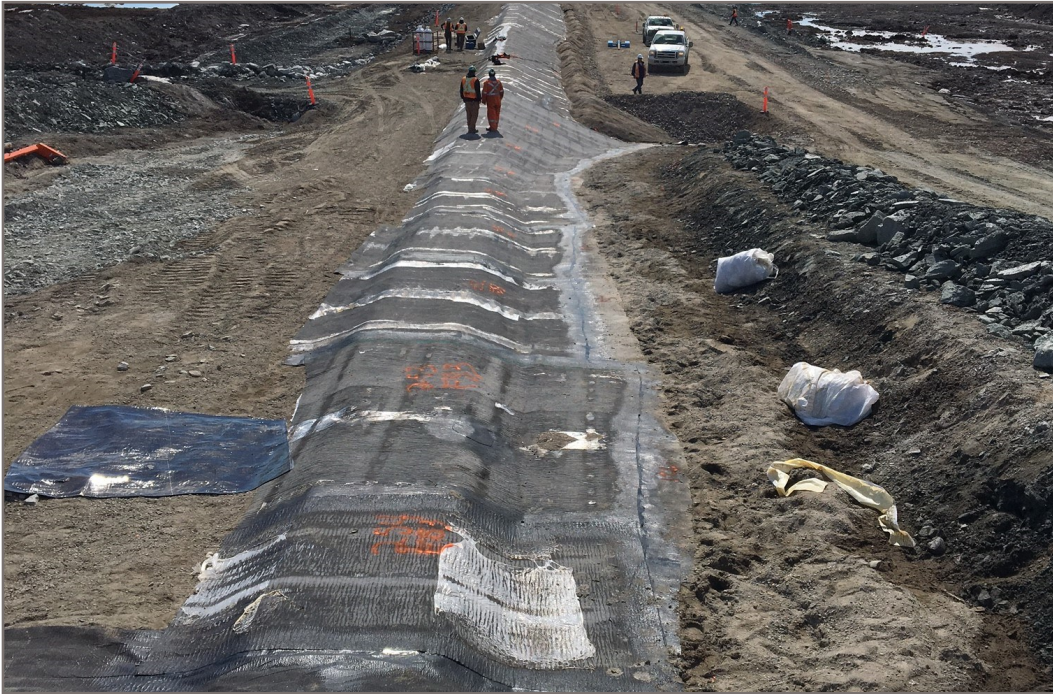


Photo 23: Phase 2 liner flipped back on downstream materials and welded to design elevation
View from Station 1+585 facing down chainage



Photo 24: Mucked out north water collection channel
View from Station 4+050 facing up chainage