



**Photo 43:** Ponding water downstream, morning of May 15, 2017  
View from Station 1+090 facing up chainage

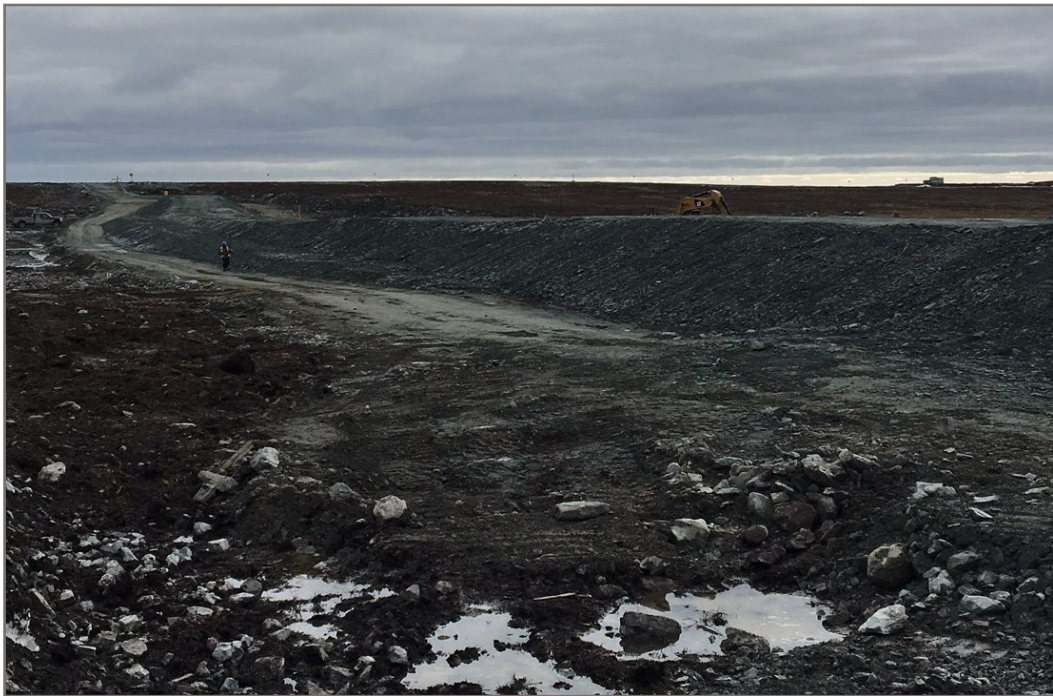


**Photo 44:** Downstream toe on May 16, 2017 with high water line down following pumping  
View from Station 1+100 facing up chainage





**Photo 45:** Downstream side of dike on May 18, 2018 showing low water level



**Photo 46:** D-CP5 overview of upstream side from Station 1+020 facing up chainage