

Follow Up Report: #21-236

June 5, 2021 – 3500 L Wing 12 Drain Pipe



The following information refers to an incident reported by Agnico Eagle Mines Ltd. on June 6, 2021, and is being provided in accordance with:

- the Nunavut Water Board License 2AM-MEL1631 Water License, Part H, item 8c
- the Government of Nunavut's, Environmental Protection Act subsection 5.1(a)

Description of Incident:

On June 5, workers conducting a regular inspection of the camp exterior found that a drainage pipe had separated from the building due to the weight of thawing snow. The pipe flows directly between the bathroom drains of the dorm wing 12, and delivers drain water to the exterior pump/lift station of the wing. Greywater and blackwater from the showers, sinks, and toilets, was released onto the gravel pad beneath the wing. An estimated 3,500L of water would have been released.

A follow-up investigation revealed that the pipe hangers on this wing were only temporary, and were never replaced when the wing was installed the previous year. The temporary hangers were unable to support the additional weight of the thawing snow, which led to the breakage.

The coordinates of the spills area: 63° 2' 22" N, 92° 13' 52" W. No water bodies were impacted by this spill.

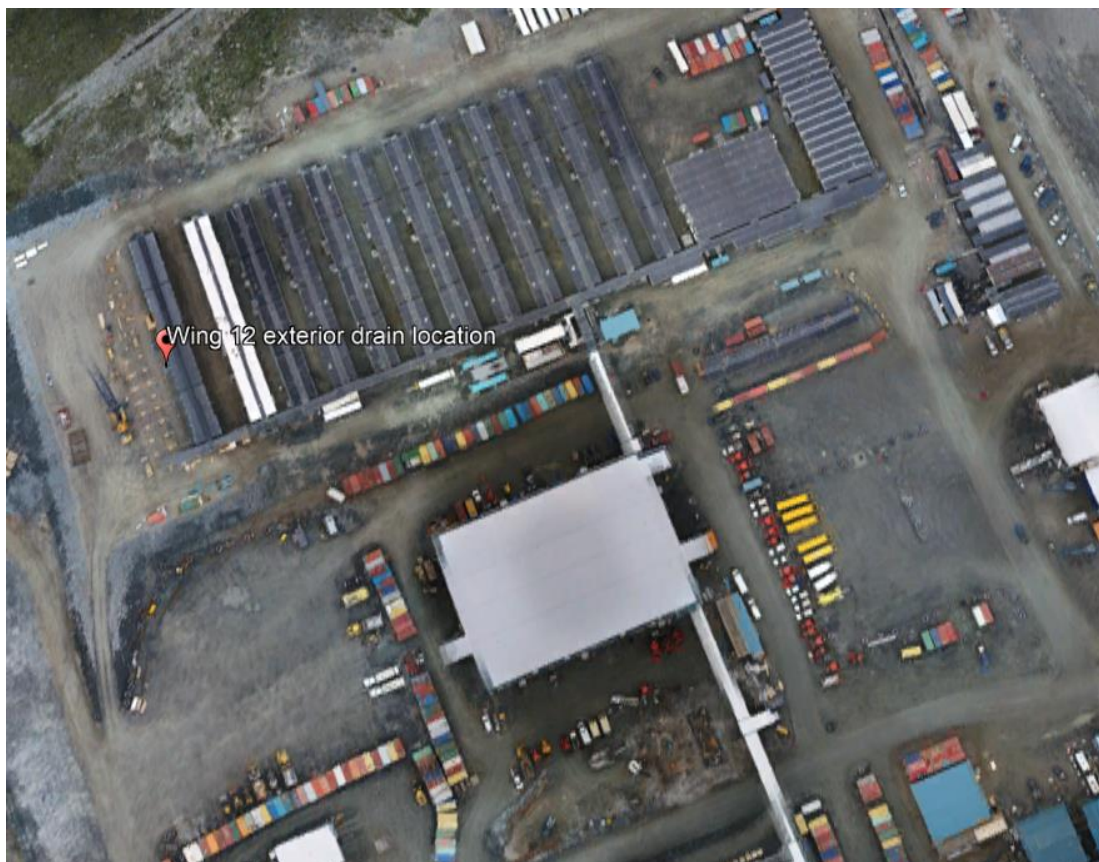


Figure 1: Location of the exterior drainage pipe where the spill occurred.



Figure 2: Drainpipe on the exterior of Wing 12 that separated from the building due to the weight of snow.

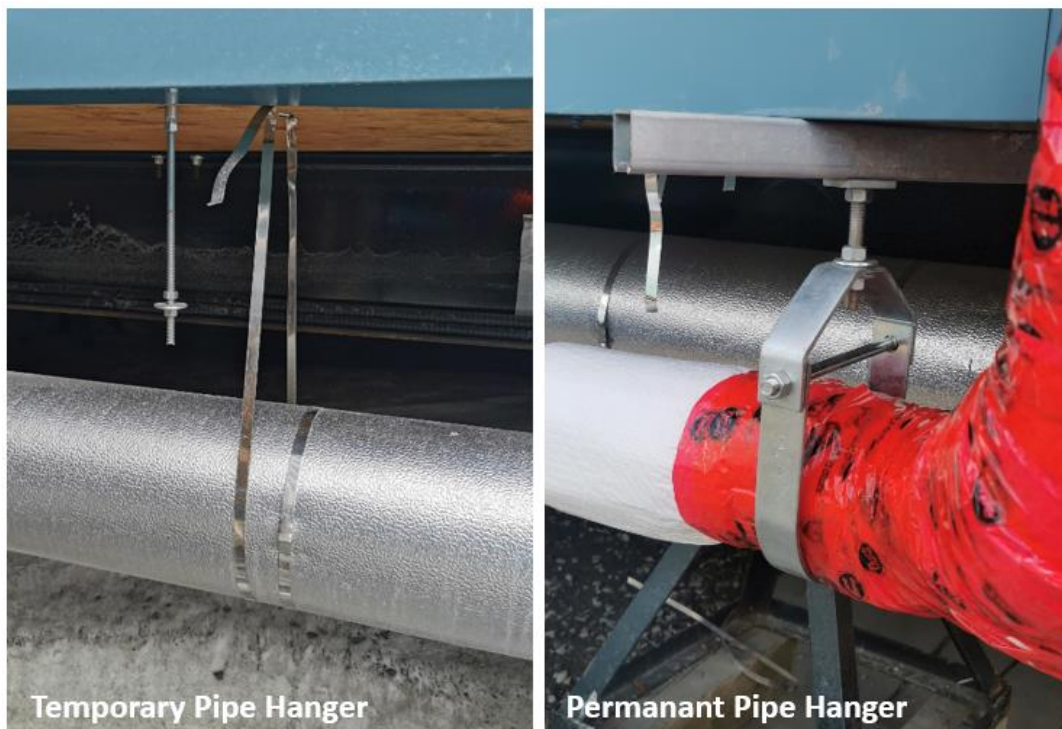


Figure 3: Example of the temporary pipe hanger that was in place prior to the spill, versus the permanent pipe hanger that is now installed.

Spill Response & Cleanup:

The initial action was to close out the usage of the Wing 12 bathrooms so until the pipe could be fixed, in order to prevent any more water from being released. The sucker truck was used to recover as much standing liquid and debris from the ground as possible, which was deposited back into the lift station of the main camp to be treated through the Sewage Treatment Plant. The snow was removed from the area in order to better assess and repair the damage.



Figure 4: Clean up of the area and reinstallation of the drainpipe with heat trace and insulation.

Corrective Measures

The piping was replaced and installed with heavy-duty pipe hangers, heat trace cables and insulation. All of the hangers on the remaining wings were inspected and they were all the correct heavy-duty type. An external consultant is also being considered to conduct an in-depth audit of the greywater/blackwater drainage and pumping systems throughout the mine site. Other long-term plans are being discussed, such as acquiring smaller equipment to be used specifically for snow removal between wings.



Sean Arruda | Environment Coordinator

sean.arruda@agnicoeagle.com | Direct 819.759.3555 x4603996 |

Agnico Eagle Mines Limited - Meliadine Mine, Suite 879 - Rankin Inlet, Nunavut,
Canada X0C 0G0

agnicoeagle.com



Sent from Meliadine