



June 21st, 2023

Kyle Amsel
Water Resource Officer
Kivalliq Region, Field Operations Unit
Crown-Indigenous Relations and Northern Affairs Canada
Rankin Inlet, NU
X0C 0G0

Sent via email: kyle.amsel@rcaanc-cirnac.gc.ca

Re: Follow-up Report Spill #2023-215 – Release of 1 m³ of kitchen grey water at the Meliadine Gold Mine

On May 23rd, 2023, the Nunavut Spill Line was notified by Agnico Eagle personnel via email (spills@gov.nt.ca) of a spill of approximately 1m³ of grey water at the Meliadine Gold Mine site (spill location coordinates: 63°2'25.42"N, 92°13'37.57"W). This follow-up report provides supplemental information based on the results of the incident assessment and is being provided in accordance with:

- Nunavut Water Board License 2AM-MEL1631 Water License, part H, item 8c.

Description of Incident

On May 23rd, 2023, at approximately 10:30 am, an estimated 1m³ of kitchen grey water was spilled to the industrial pad due to a cracked drainpipe. A worker identified the spill during an inspection around the kitchen area and notified their supervisor.

No water bodies were impacted by this spill. The closest water body (G2) is approximately 277 meters northwest, as seen in Figure 1.



Figure 1: Location of the grey water spill and proximity to water bodies.

Spill Response and Remediation

The Energy and Infrastructure Maintenance Supervisor was notified of the spill and immediately shut off the water supply to the kitchen to prevent further leakage. Health and safety concerns limited equipment and personnel access to the spill location and prevented the Maintenance Team from recovering the spilled material. Due to the topography of the area and the freezing conditions at the time of the spill, the spill did not migrate from the footprint of the building, and will be reclaimed when the infrastructure is dismantled.

Root Causes and Corrective Measures

An assessment was conducted soon after the incident occurred to determine the root cause and contributing factors. The assessment concluded with the following:






- The weight of ice/snow melt on the drainpipe and a missing support caused the failure of the drainpipe.

The following corrective and preventative actions have been implemented to address the root causes and to reduce the likelihood of reoccurrence:

- Additional support has been added to the drainpipe.

Should you have any questions or require further information, please do not hesitate to contact the undersigned.



Brett Fairbairn | Environment Coordinator
brett.fairbairn@agnicoeagle.com | Direct 819.759.3555 x4603996 |
Agnico Eagle Mines Limited - Meliadine Mine, Suite 879 - Rankin Inlet, Nunavut, Canada X0C 0G0
agnicoeagle.com     
Sent from Meliadine

Appendix – Photos

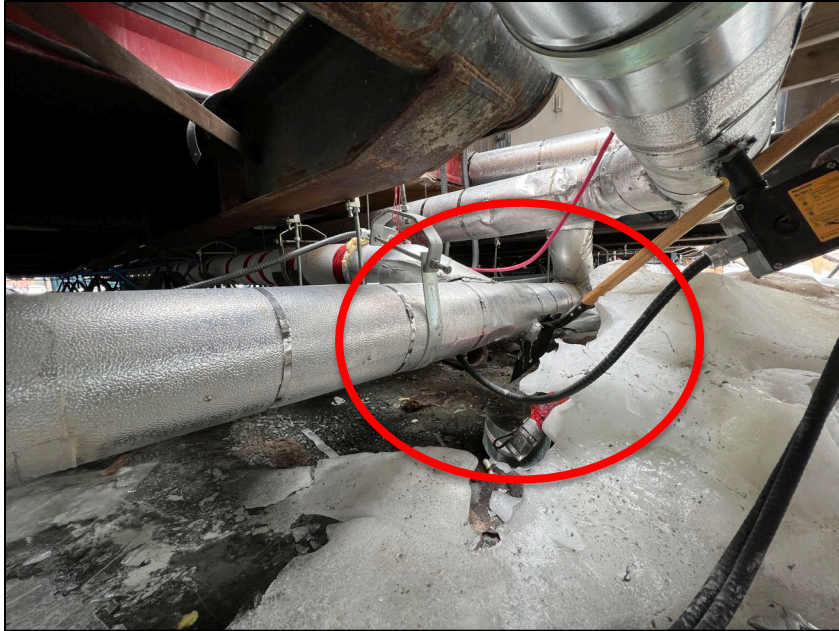


Photo 1: Grey water spill location and source.