

January 3rd, 2025

Kyle Amsel
Resource Management Officer
Kivalliq Region, Field Operations Unit
Crown-Indigenous Relations and Northern Affairs Canada
Rankin Inlet, NU
XOC 0G0

Sent via email: kyle.amsel@rcaanc-cirnac.gc.ca

Re: Follow-up Report Spill #2025-457 – Release of 40 L of sewage at the Meliadine Gold Project

On December 5th, 2025, the Nunavut Spill Line was notified by Agnico Eagle personnel via email (spills@gov.nt.ca) of a spill of approximately 40 L of sewage from the kitchen drain line at the Meliadine Gold Project site (spill location coordinates: 63° 2' 25.00" N, 92° 13' 37.58" W). This follow-up report provides supplemental information based on the results of the incident assessment and is being provided in accordance with:

- Nunavut Water Board 2AM-MEL1631 Water Licence (the Licence), Part H, Item 8c.

Description of Incident

On December 4th, 2025, at approximately 5:00PM, an Energy and Infrastructure (E&I) maintenance employee noticed that multiple icicles had formed under the cafeteria's kitchen and bathroom drain line on the exterior of the building.

Because the spill occurred within the site's runoff collection system, no water bodies were impacted by the spill. The nearest waterbody, Lake G2, is approximately 280 meters northwest (Figure 1).

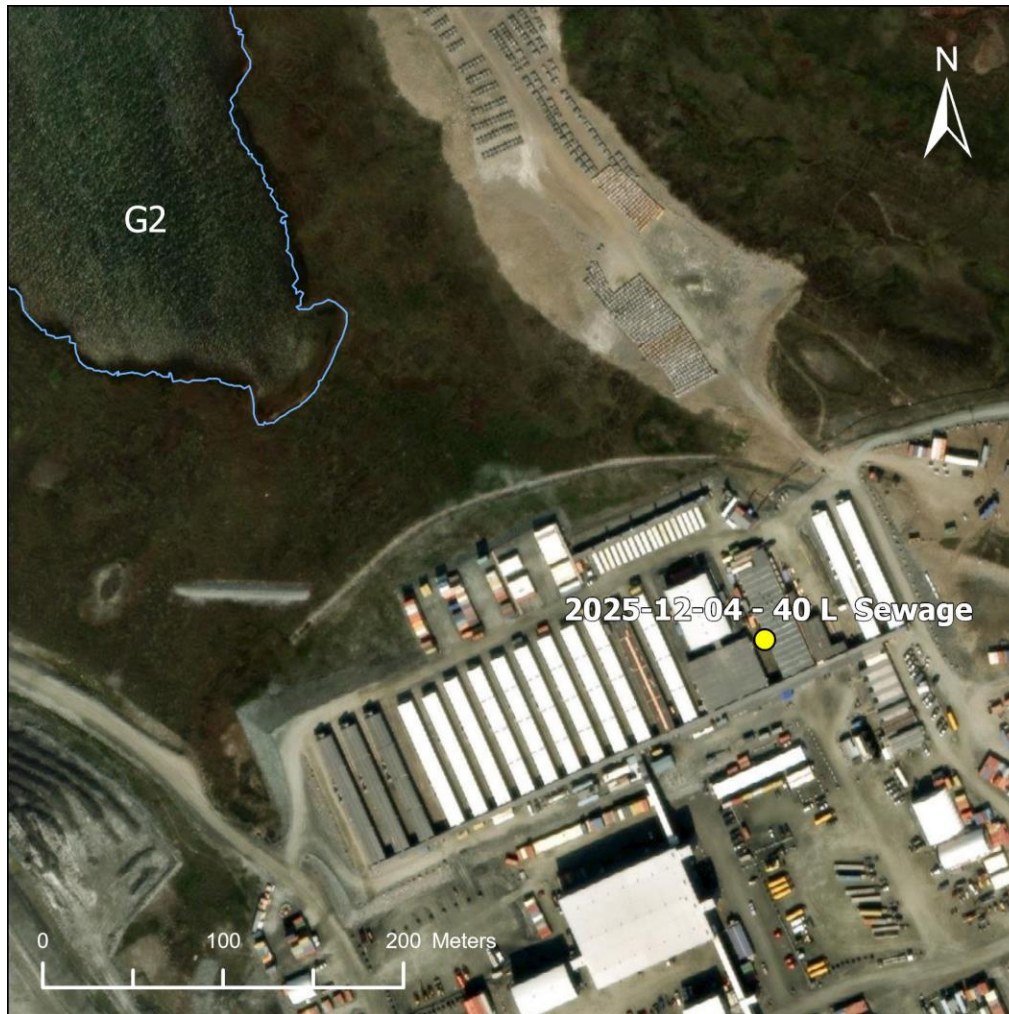


Figure 1: Location of the spill and proximity to water bodies.

Response and Remediation

The E&I maintenance employee reached out to their supervisor for assistance in assessing the situation. It was determined that the kitchen drain line insulation was frozen solid, but the heat trace was still preventing the line from fully freezing. After inspection of the entire line, it was confirmed that the spill was no longer occurring, as no visible drips or moisture were observed along the line.

Contaminated material (ice and affected snow) was collected and transported to Landfarm A in accordance with the Spill Contingency plan.

Root Cause and Corrective Measures

An assessment was conducted soon after the incident to determine the root cause and contributing factors. While the exact cause of the leak cannot be confirmed with certainty, the assessment concluded with the following:

- Extreme cold temperatures caused a failure (crack or separation) in the kitchen drain line, allowing sewage to escape.
- The line later sealed when ice formed in and around the damaged area, stopping the active leak.

The following corrective and preventative actions have been implemented to address the root cause and to reduce the likelihood of recurrence:

- A tarp was installed around the section of pipe that leaked near the kitchen to provide temporary protection and containment.
- The line will be inspected frequently (up to daily) throughout the remainder of the winter to check for signs of renewed leakage.
- A full inspection and any required repairs will be completed during the summer, when the heat trace system can be safely deactivated and the line exposed without increasing the risk of another spill.

Should you have any questions or require further information, please do not hesitate to contact the undersigned.



Randy Schwandt | Supervisor, Environment
randy.schwandt@agnicoeagle.com | Direct 819.759.3555 x4603996 |
Agnico Eagle Mines Limited - Meliadine Mine, Suite 879 - Rankin Inlet, Nunavut,
Canada X0C 0G0
agnicoeagle.com     

Appendix A – Photos



Photo 1: Spill location.



Photo 2: Spill location after remediation and tarp installation.