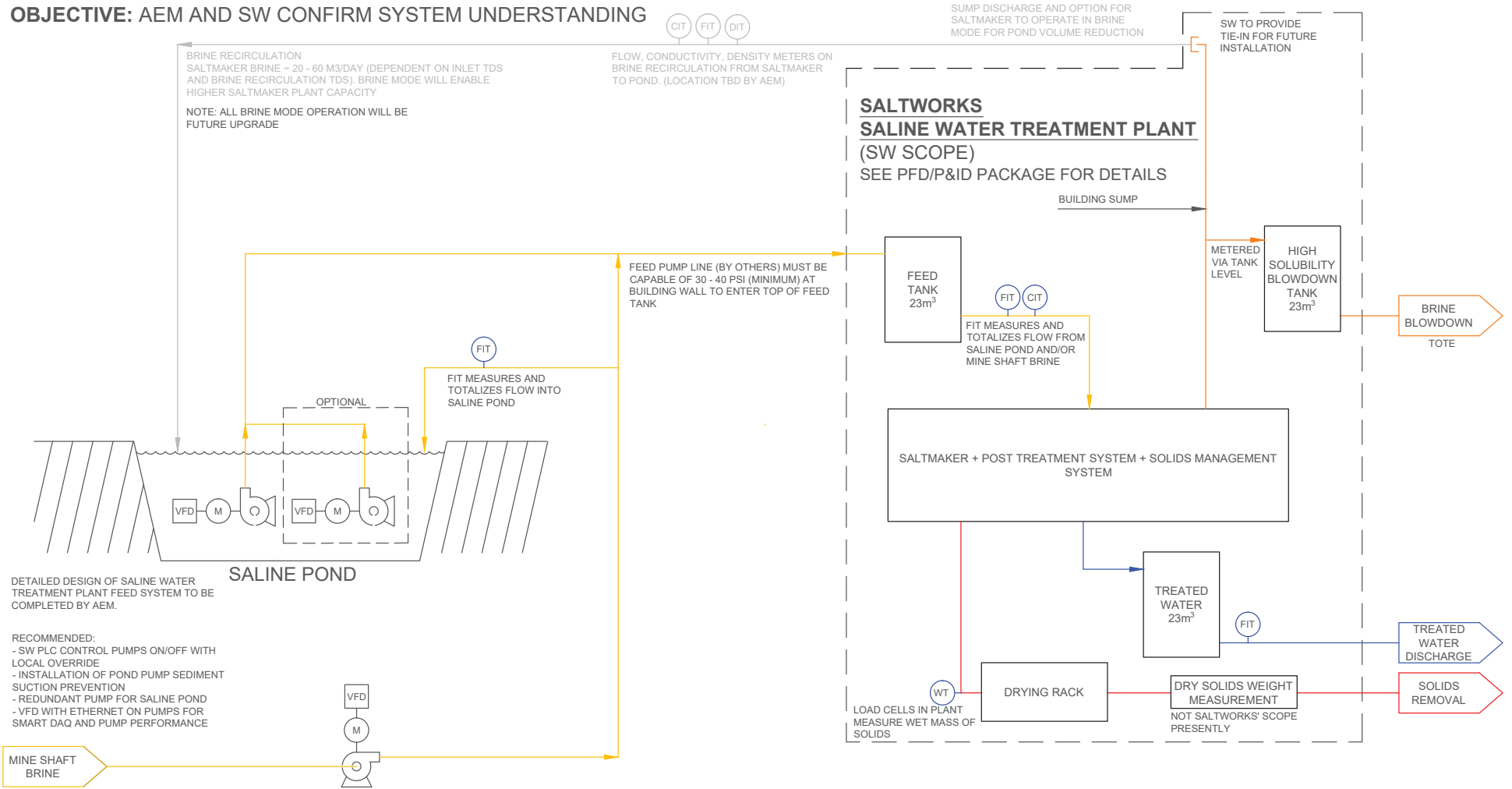


# AGNICO EAGLE - SALTWORKS: SALINE WATER TREATMENT PLANT INTEGRATION PFD

OBJECTIVE: AEM AND SW CONFIRM SYSTEM UNDERSTANDING



DETAILED DESIGN OF SALINE WATER TREATMENT PLANT FEED SYSTEM TO BE COMPLETED BY AEM.

- RECOMMENDED:
- SW PLC CONTROL PUMPS ON/OFF WITH LOCAL OVERRIDE
  - INSTALLATION OF POND PUMP SEDIMENT SUCTION PREVENTION
  - REDUNDANT PUMP FOR SALINE POND
  - VFD WITH ETHERNET ON PUMPS FOR SMART DAQ AND PUMP PERFORMANCE

MINE SHAFT BRINE



13900 Steveston Hwy  
Richmond, BC, Canada, V6W 1A8  
Tel: 604.628.6508 Fax: 604.676.2463  
www.saltworkstech.com

DRAWING STATUS:	DRAWING STATUS	LTR	DATE	DESCRIPTION	REV. BY:	TITLE:
THIS DOCUMENT EMBODIES DESIGNS AND INFORMATION THAT ARE PROPRIETARY TO SALTWORKS. IT IS TO BE USED ONLY FOR THE PURPOSE AND BY THE ENTITY FOR WHICH IT WAS ORIGINALLY SUPPLIED. THE DOCUMENT MAY NOT BE DUPLICATED OR DISCLOSED TO OTHER PERSON OR ENTITY, OR USED FOR MANUFACTURE OF THE ITEM IN PART OR IN WHOLE WITHOUT THE PRIOR WRITTEN PERMISSION OF SALTWORKS.	1	26-SEP-2017	INITIAL DRAFT	XX	PROJECT:	SALTMAKER GEN III
	2	06-OCT-2017	UPDATED PER AEM COMMENTS	XX	CUSTOMER:	AGNICO EAGLE MINES
	3	30-OCT-2017	UPDATED PER AEM COMMENTS	ML	PREPARED BY:	XX
					DATE:	26-SEP-2017
					DWG. NO.:	SW_EN_SW_GEN III_PID_DWG_INTEGRATPFD
					CHECKED BY:	DATE:
					APPROVED BY:	APPROVED DATE:
					SHEET:	# OF #

DO NOT SCALE DRAWING

DRAWING STATUS:	DRAWING STATUS	LTR	DATE	DESCRIPTION	REV. BY:	TITLE:
THIS DOCUMENT EMBODIES DESIGNS AND INFORMATION THAT ARE PROPRIETARY TO SALTWORKS. IT IS TO BE USED ONLY FOR THE PURPOSE AND BY THE ENTITY FOR WHICH IT WAS ORIGINALLY SUPPLIED. THE DOCUMENT MAY NOT BE DUPLICATED OR DISCLOSED TO OTHER PERSON OR ENTITY, OR USED FOR MANUFACTURE OF THE ITEM IN PART OR IN WHOLE WITHOUT THE PRIOR WRITTEN PERMISSION OF SALTWORKS.	1	26-SEP-2017	INITIAL DRAFT	XX	PROJECT:	SALTMAKER GEN III
	2	06-OCT-2017	UPDATED PER AEM COMMENTS	XX	CUSTOMER:	AGNICO EAGLE MINES
	3	30-OCT-2017	UPDATED PER AEM COMMENTS	ML	PREPARED BY:	XX
					DATE:	26-SEP-2017
					DWG. NO.:	SW_EN_SW_GEN III_PID_DWG_INTEGRATPFD
					CHECKED BY:	DATE:
					APPROVED BY:	APPROVED DATE:
					SHEET:	# OF #

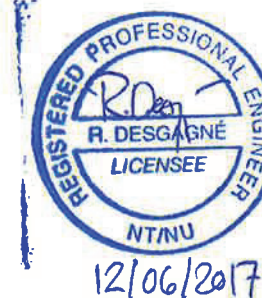
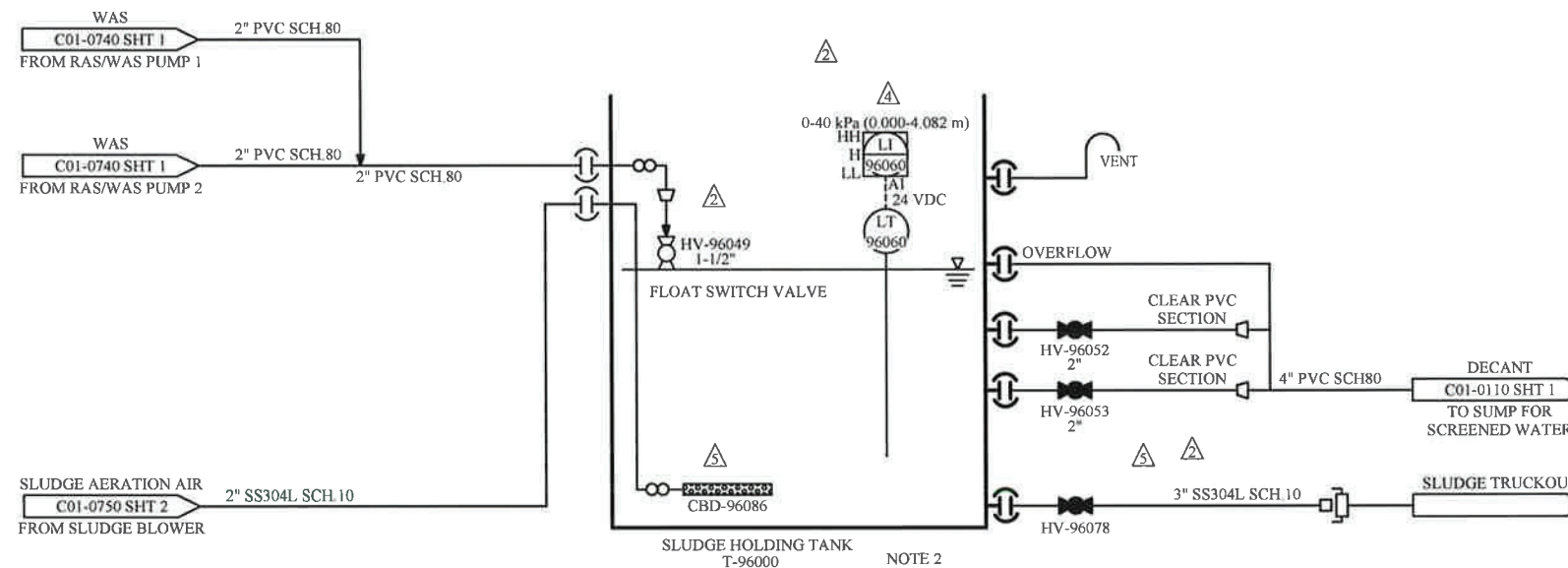
# Appendix Q

## Infrastructures As-Built and Design

### Sewage Treatment Plant (STP)

Meliadine Interim Closure and Reclamation Plan 2019		Original -V.00
2019/12/12	668523-4000-4EER-0001	Technical Report





NOTES:

1. ALL COMPONENTS GOING INTO RIO 101.
2. SLUDGE HOLDING TANK WITH COVER.
3. ALL VENT TO OUTSIDE.

NOTE:  
THE INFORMATION, SPECIFICATIONS AND DATA SHOWN ON THIS PRINT ARE FURNISHED BY AND ARE TO REMAIN THE PROPERTY OF H<sub>2</sub>O INNOVATION.

THE PURPOSE OF THIS DOCUMENT IS TO FACILITATE THE INSTALLATION, MAINTENANCE AND OPERATION OF THE EQUIPMENT REPRESENTED BY SAID PRINT. NO OTHER USE OF THIS DOCUMENT SHALL BE MADE WITHOUT EXPRESS WRITTEN CONSENT FROM H<sub>2</sub>O INNOVATION.

DRAWING REVISION						
REV	DATE	REVISION DESCRIPTION	DRAWN	CHKD	ENG	APPVD
06	02/12/2016	REVISED AS INSTALLED	M.P.	R.D.	H.C.	R.D.
05	21/09/2016	REVISED AS BUILT	M.P.	H.S.	H.C.	R.D.
04	08/02/2016	REVISED AS PER COMMENT	M.P.	H.S.	H.C.	H.C.
03	25/07/2016	REVISED AS PER COMMENT	M.P.	H.S.	H.C.	H.C.
01	11/07/2016	CHANGE SUMP TANK BALL TO GATE VALVE, SOLENOID TO ELECTRIC VALVE, TURBIDITY METER TO 120V	M.P.	H.S.	H.C.	H.C.



UNLESS NOTED OTHERWISE  
INTERPRETATION  
ANSI Y14.5

TOLERANCES  
FRACTIONS  
DECIMALS  
ANGLES  
HOLE SIZES  
HOLE CENTERS

60°  
10/100  
0.001  
10/100  
10/100  
10/100  
10/100

DO NOT SCALE PRINTS

MELIADINE STP  
216 M3/DAY

TITLE:		
SLUDGE HANDLING SYSTEM PROCESS & INSTRUMENTATION DIAGRAM		
SCALE: N/A	DRAWING NUMBER: U65875-C01-0960	REVISION 06
SHEET: 1 of 1		

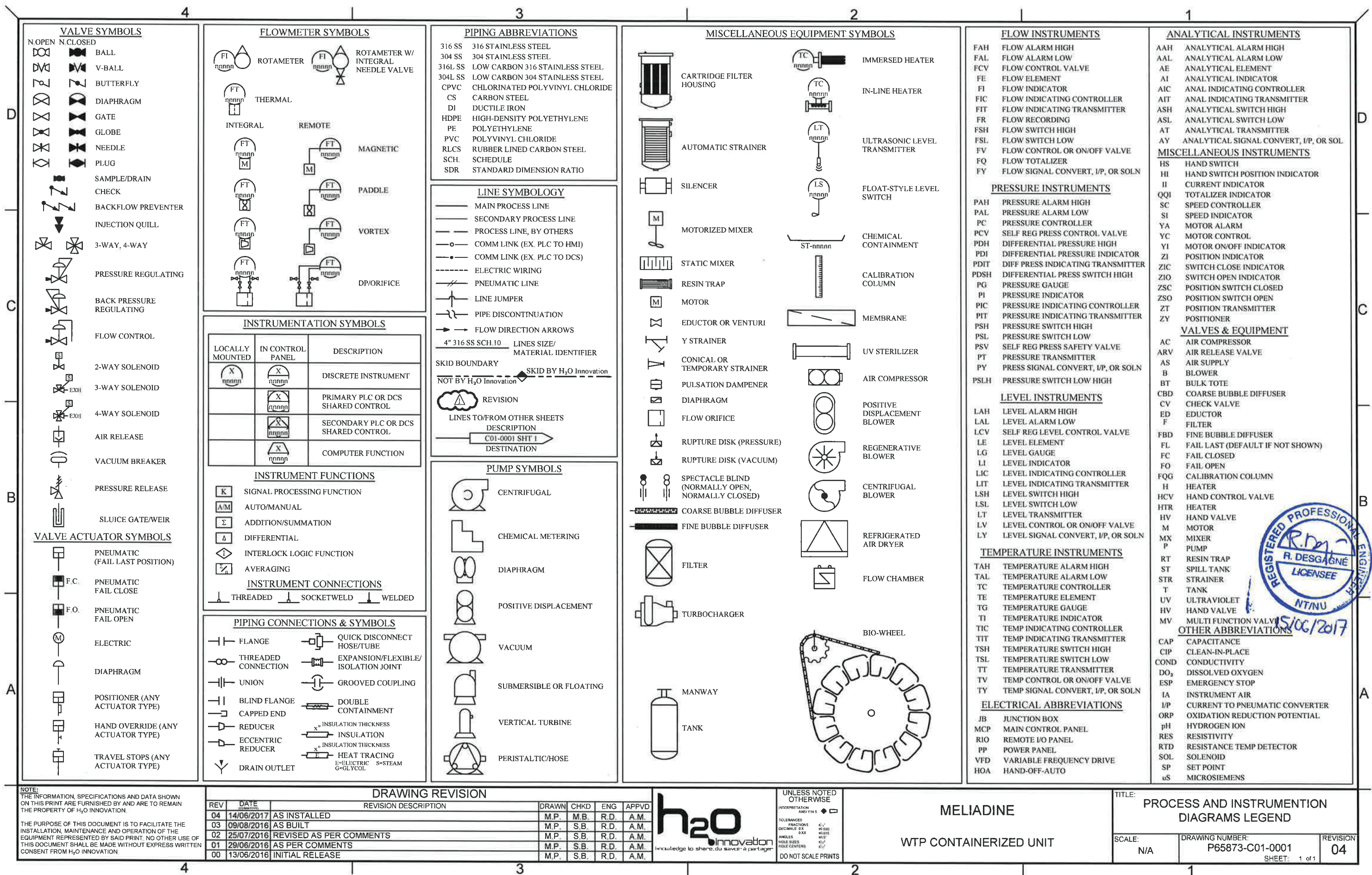
# Appendix Q

## Infrastructures As-Built and Design

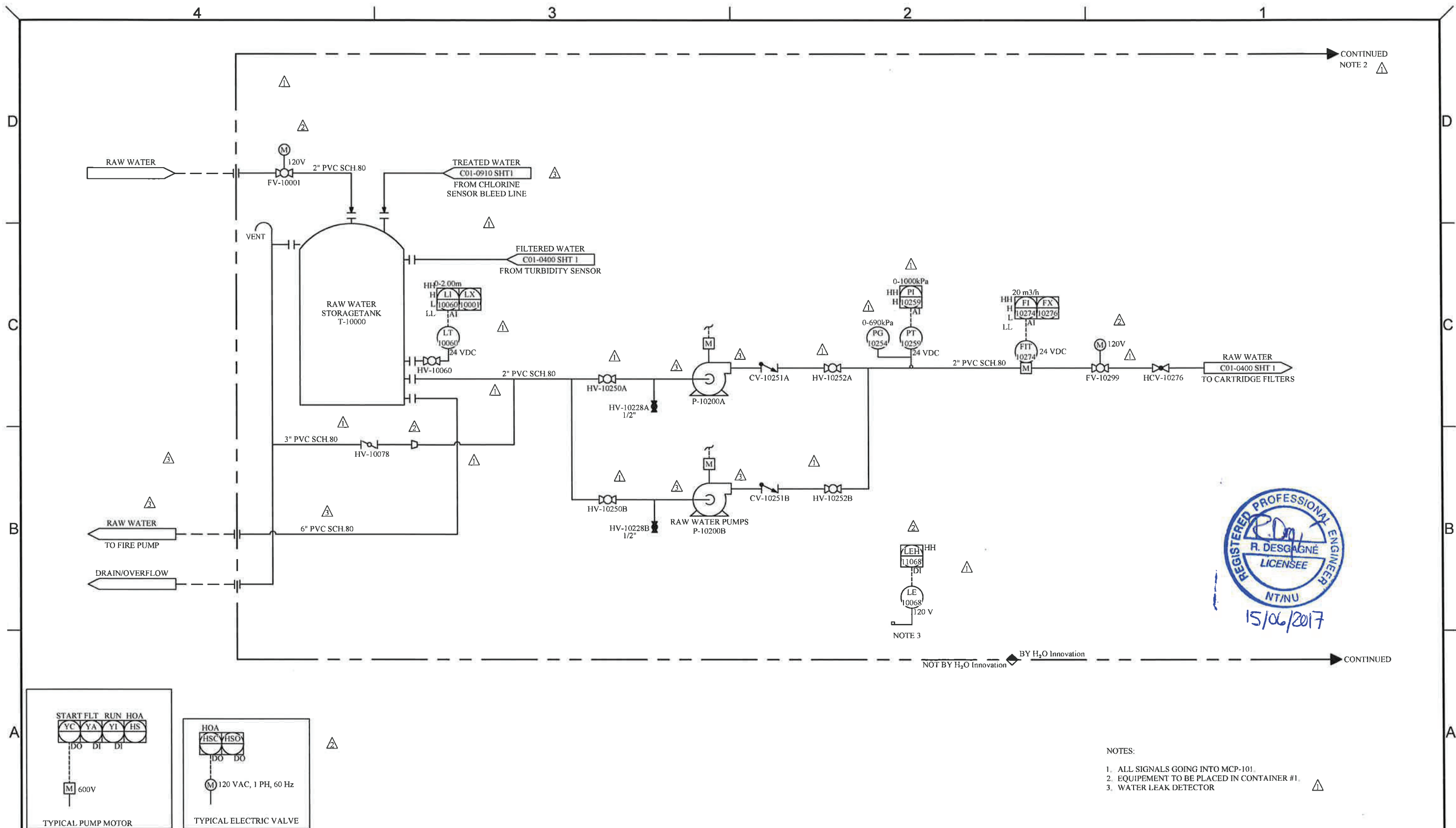
### Fresh Water Treatment Plant (FWTP)

Meliadine Interim Closure and Reclamation Plan 2019		Original -V.00
2019/12/12	668523-4000-4EER-0001	Technical Report









NOTE:  
THE INFORMATION, SPECIFICATIONS AND DATA SHOWN ON THIS PRINT ARE FURNISHED BY AND ARE TO REMAIN THE PROPERTY OF H<sub>2</sub>O INNOVATION.

THE PURPOSE OF THIS DOCUMENT IS TO FACILITATE THE INSTALLATION, MAINTENANCE AND OPERATION OF THE EQUIPMENT REPRESENTED BY SAID PRINT. NO OTHER USE OF THIS DOCUMENT SHALL BE MADE WITHOUT EXPRESS WRITTEN CONSENT FROM H<sub>2</sub>O INNOVATION.

DRAWING REVISION					
REV	DATE	REVISION DESCRIPTION	DRAWN	CHKD	ENG
04	14/06/2017	AS INSTALLED	M.P.	M.B.	R.D.
03	09/08/2016	AS BUILT	M.P.	S.B.	R.D.
02	25/07/2016	REVISED AS PER COMMENTS	M.P.	S.B.	R.D.
01	29/06/2016	AS PER COMMENTS	M.P.	S.B.	R.D.
00	13/06/2016	INITIAL RELEASE	M.P.	S.B.	R.D.

**h<sub>2</sub>O**  
innovation  
knowledge to share, du savoir à partager

UNLESS NOTED OTHERWISE  
INTERPRETATION  
ANSI 114.5

TOLERANCES  
FRACTIONS  
DECIMALS  
ANGLES  
HOLE SIZES  
HOLE CENTERS

DO NOT SCALE PRINTS

MELIADINE  
WTP CONTAINERIZED UNIT

TITLE:  
RAW WATER FEED SYSTEM  
PROCESS & INSTRUMENTATION DIAGRAM

SCALE: N/A

DRAWING NUMBER:  
P65873-C01-0100

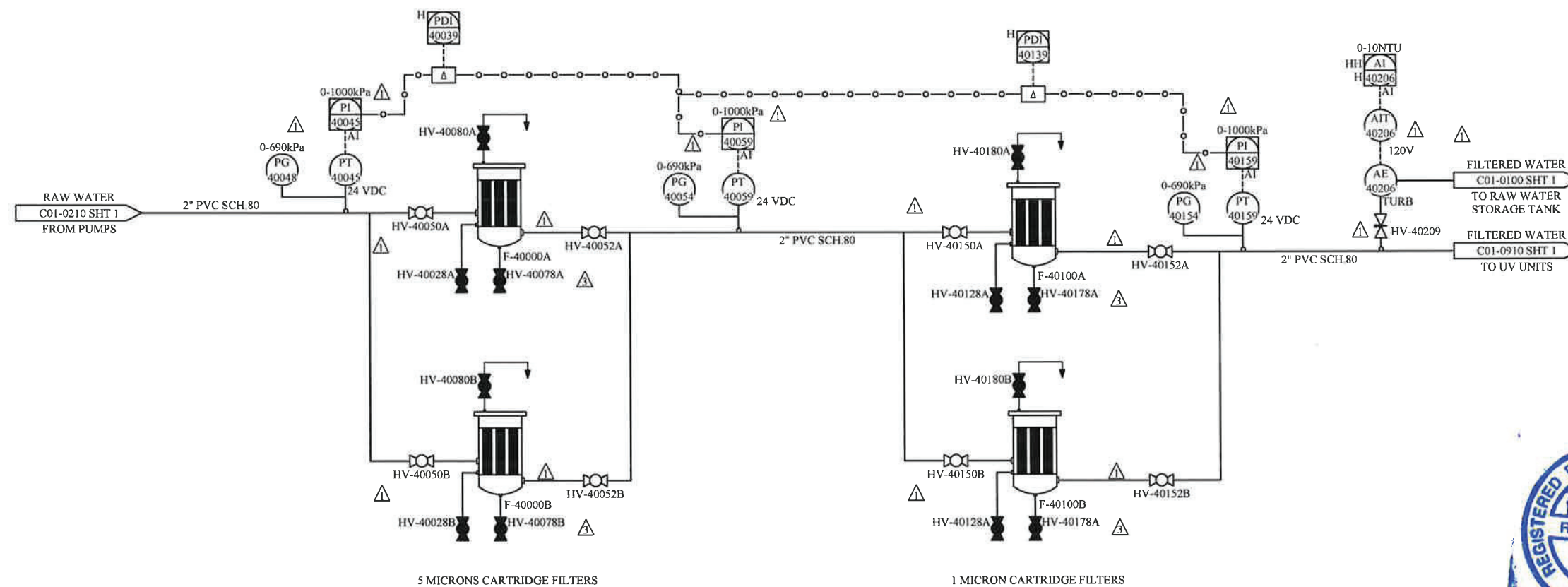
REVISION  
04

SHEET: 1 of 1

CONTINUES

CONTINUES

NOTE 2



5 MICRONS CARTRIDGE FILTERS

1 MICRON CARTRIDGE FILTERS



CONTINUES

NOT BY H<sub>2</sub>O Innovation

CONTINUES

## NOTES:

1. ALL SIGNALS GOING INTO MCP-101.
2. EQUIPEMENT TO BE PLACED IN CONTAINER #1.

NOTE:  
THE INFORMATION, SPECIFICATIONS AND DATA SHOWN ON THIS PRINT ARE FURNISHED BY AND ARE TO REMAIN THE PROPERTY OF H<sub>2</sub>O INNOVATION.

THE PURPOSE OF THIS DOCUMENT IS TO FACILITATE THE INSTALLATION, MAINTENANCE AND OPERATION OF THE EQUIPMENT REPRESENTED BY SAID PRINT. NO OTHER USE OF THIS DOCUMENT SHALL BE MADE WITHOUT EXPRESS WRITTEN CONSENT FROM H<sub>2</sub>O INNOVATION.

DRAWING REVISION					
REV	DATE	REVISION DESCRIPTION	DRAWN	CHKD	ENG
04	14/06/2017	AS INSTALLED	M.P.	M.B.	R.D.
03	09/08/2016	AS BUILT	M.P.	S.B.	R.D.
02	25/07/2016	REVISED AS PER COMMENTS	M.P.	S.B.	R.D.
01	29/06/2016	AS PER COMMENTS	M.P.	S.B.	R.D.
00	13/06/2016	INITIAL RELEASE	M.P.	S.B.	R.D.

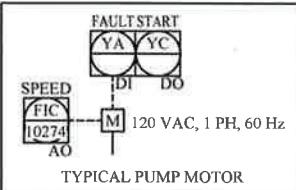
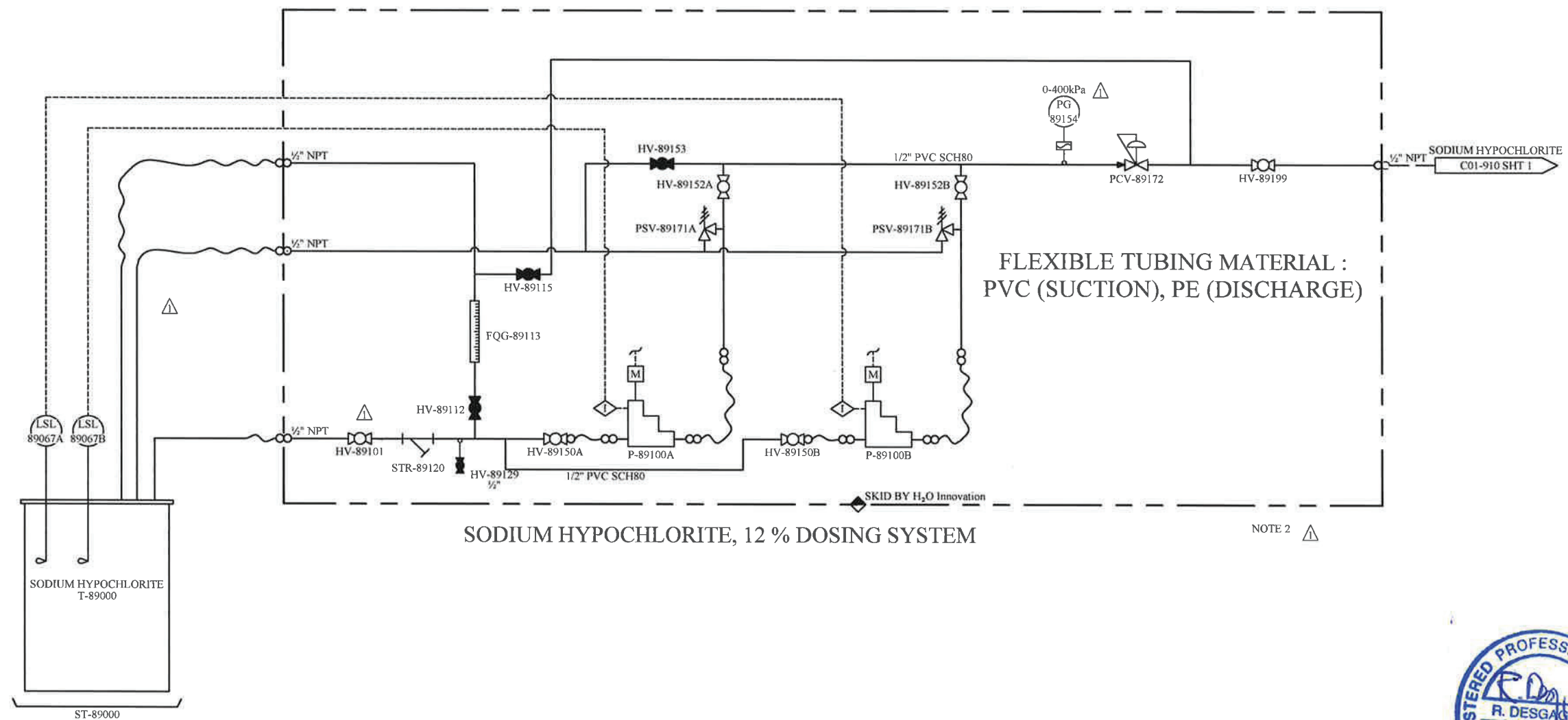


UNLESS NOTED OTHERWISE  
INTERPRETATION  
TOLERANCES  
FRACTIONS  
DECIMALS  
ANGLES  
HOLE SIZES  
HOLE CENTERS  
DO NOT SCALE PRINTS

MELIADINE  
WTP CONTAINERIZED UNIT

TITLE:		
CARTRIDGE FILTERS PROCESS & INSTRUMENTATION DIAGRAM		
SCALE:	DRAWING NUMBER:	REVISION
N/A	P65873-C01-0400	04
SHEET: 1 of 1		





- NOTES:
1. ALL SIGNALS GOING INTO MCP-101.
  2. EQUIPMENT TO BE PLACED IN CONTAINER #1.

NOTE:  
THE INFORMATION, SPECIFICATIONS AND DATA SHOWN ON THIS PRINT ARE FURNISHED BY AND ARE TO REMAIN THE PROPERTY OF H<sub>2</sub>O INNOVATION.

THE PURPOSE OF THIS DOCUMENT IS TO FACILITATE THE INSTALLATION, MAINTENANCE AND OPERATION OF THE EQUIPMENT REPRESENTED BY SAID PRINT. NO OTHER USE OF THIS DOCUMENT SHALL BE MADE WITHOUT EXPRESS WRITTEN CONSENT FROM H<sub>2</sub>O INNOVATION.

DRAWING REVISION							
REV	DATE	REVISION DESCRIPTION	DRAWN	CHKD	ENG	APPVD	
04	14/06/2017	AS INSTALLED	M.P.	M.B.	R.D.	A.M.	
03	09/08/2016	AS BUILT	M.P.	S.B.	R.D.	A.M.	
02	25/07/2016	REVISED AS PER COMMENTS	M.P.	S.B.	R.D.	A.M.	
01	29/06/2016	AS PER COMMENTS	M.P.	S.B.	R.D.	A.M.	
00	13/06/2016	INITIAL RELEASE	M.P.	S.B.	R.D.	A.M.	

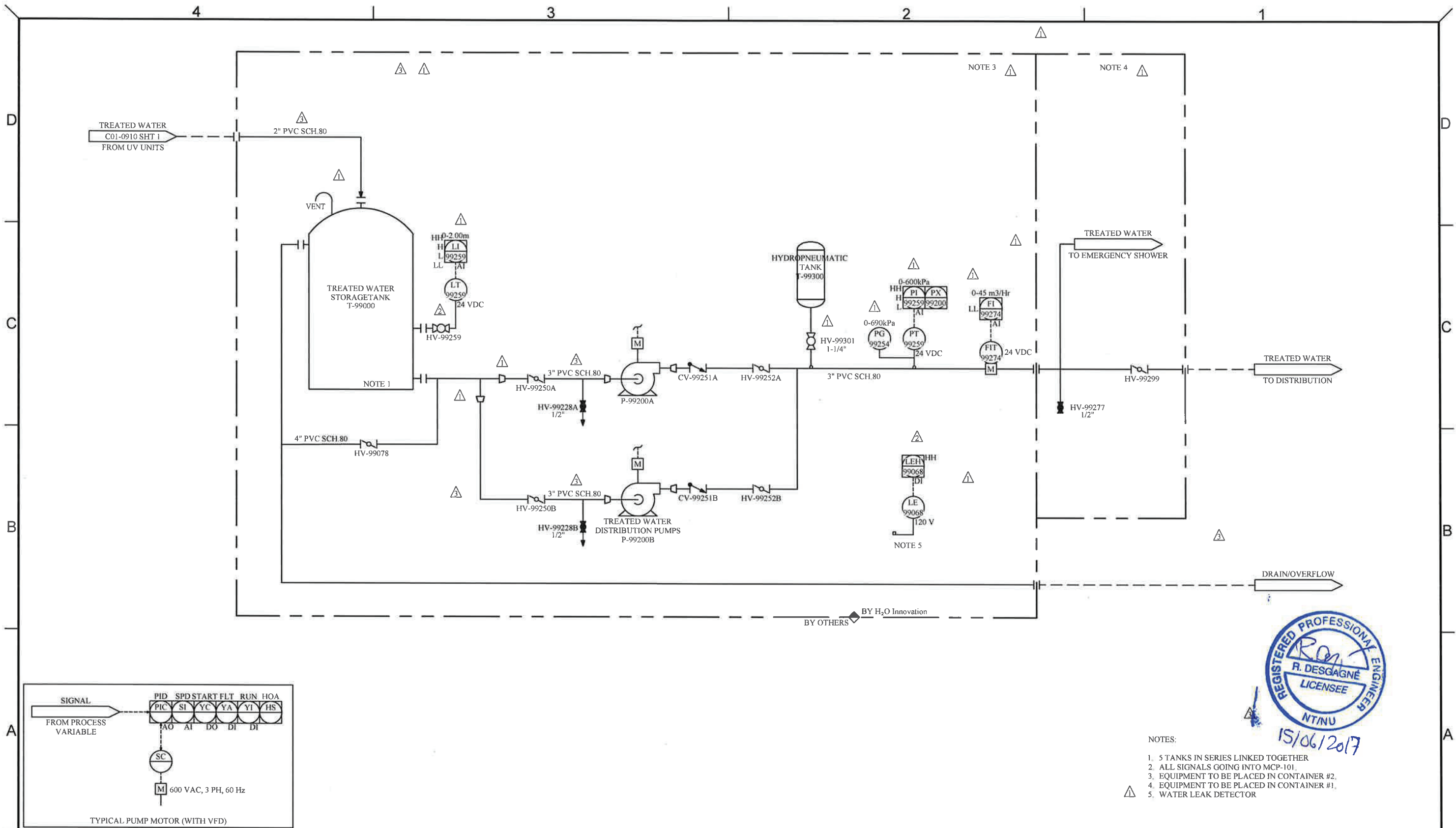


UNLESS NOTED OTHERWISE  
INTERPRETATION: ANSI Y14.5  
TOLERANCES: FRACTIONS: 1/16", 1/8", 1/4", 1/2", 1"  
DECIMALS: 0.005, 0.010, 0.015, 0.020, 0.030, 0.040, 0.050, 0.060, 0.070, 0.080, 0.090, 0.100  
ANGLES: 15°, 30°, 45°, 60°, 75°, 90°, 105°, 120°, 135°, 150°, 165°, 180°  
HOLE SIZES: 1/16", 1/8", 1/4", 1/2", 1"  
HOLE CENTERS: 1/16", 1/8", 1/4", 1/2", 1"  
DO NOT SCALE PRINTS

MELIADINE  
WTP CONTAINERIZED UNIT

TITLE:			
DOSING SKIDS - DUPLEX SOLENOID PROCESS & INSTRUMENTATION DIAGRAM			
SCALE:	DRAWING NUMBER:		REVISION
N/A	P65873-C01-0800		04
SHEET: 1 of 1			





- NOTES:
- 5 TANKS IN SERIES LINKED TOGETHER
  - ALL SIGNALS GOING INTO MCP-101.
  - EQUIPMENT TO BE PLACED IN CONTAINER #2.
  - EQUIPMENT TO BE PLACED IN CONTAINER #1.
  - WATER LEAK DETECTOR

**NOTE:**  
THE INFORMATION, SPECIFICATIONS AND DATA SHOWN ON THIS PRINT ARE FURNISHED BY AND ARE TO REMAIN THE PROPERTY OF H<sub>2</sub>O INNOVATION.

THE PURPOSE OF THIS DOCUMENT IS TO FACILITATE THE INSTALLATION, MAINTENANCE AND OPERATION OF THE EQUIPMENT REPRESENTED BY SAID PRINT. NO OTHER USE OF THIS DOCUMENT SHALL BE MADE WITHOUT EXPRESS WRITTEN CONSENT FROM H<sub>2</sub>O INNOVATION.

DRAWING REVISION						
REV	DATE	REVISION DESCRIPTION	DRAWN	CHKD	ENG	APPVD
04	14/06/2017	AS INSTALLED	M.P.	M.B.	R.D.	A.M.
03	09/08/2016	AS BUILT	M.P.	S.B.	R.D.	A.M.
02	25/07/2016	REVISED AS PER COMMENTS	M.P.	S.B.	R.D.	A.M.
01	29/06/2016	AS PER COMMENTS	M.P.	S.B.	R.D.	A.M.
00	13/06/2016	INITIAL RELEASE	M.P.	S.B.	R.D.	A.M.



UNLESS NOTED OTHERWISE  
INTERPRETATION  
ANSI Y14.5

TOLERANCES  
FRACTIONS  
DECIMALS  
ANGLES  
HOLE SIZES  
HOLE COUNTERS

DO NOT SCALE PRINTS

MELIADINE  
WTP CONTAINERIZED UNIT

TITLE:		
TREATED WATER DISTRIBUTION SYSTEM PROCESS & INSTRUMENTATION DIAGRAM		
SCALE: N/A	DRAWING NUMBER: P65873-C01-0990 SHEET: 1 of 1	REVISION 04



# Appendix Q

## Infrastructures As-Built and Design

### Landfill

Meliadine Interim Closure and Reclamation Plan 2019		Original -V.00
2019/12/12	668523-4000-4EER-0001	Technical Report