

Appendix K

Ecological Land

Meliadine Interim Closure and Reclamation Plan – Update 2020		Original -V.03
2021/04/07	674942-4000-4EER-0002	Technical Report

Appendix K

Ecological Land

Total Area and Percent Cover of Land Cover Classes within the Regional Study Area
(FEIS, AEM, 2014)

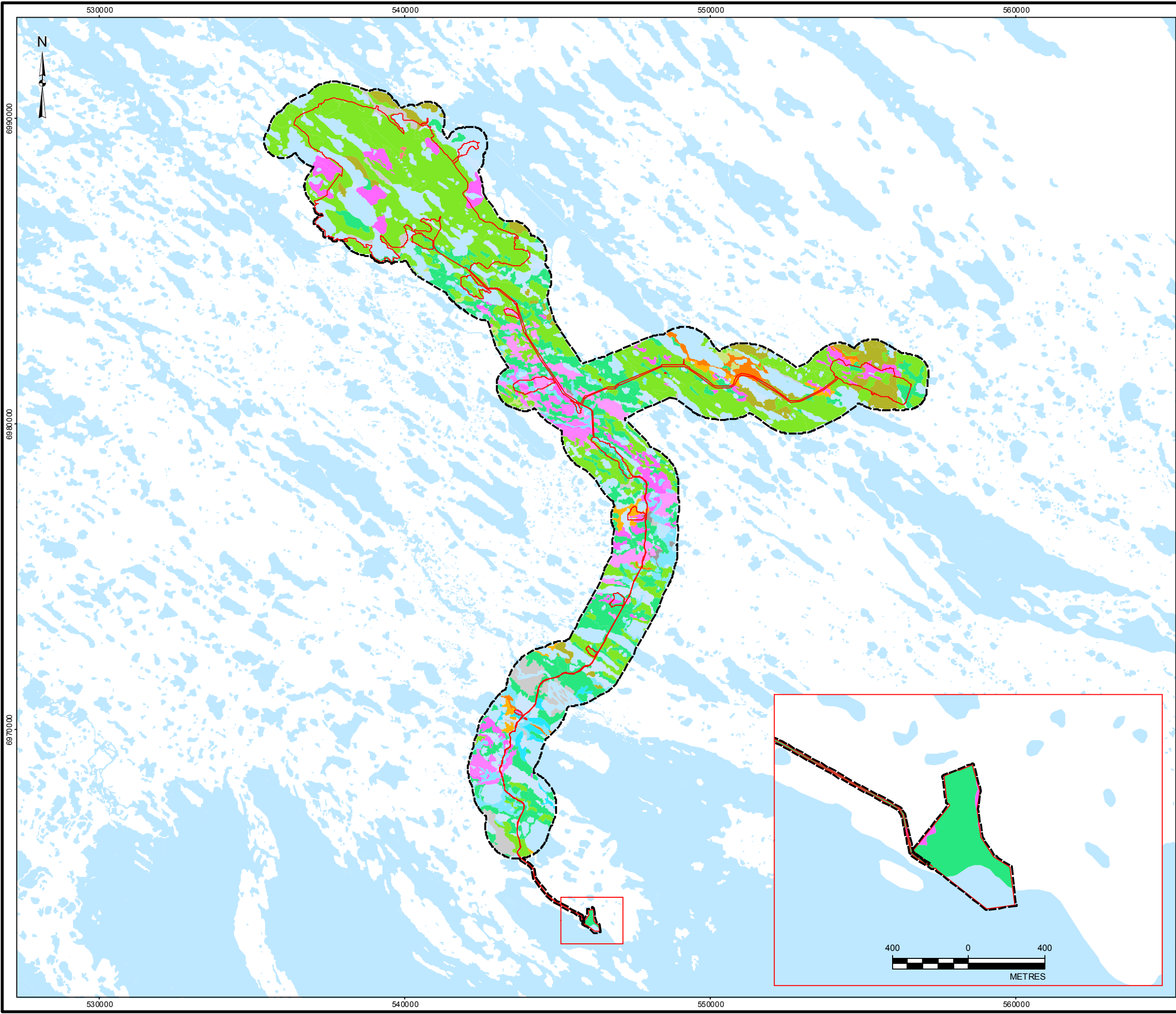
Regional Land Cover Class	Regional Land Cover Class Description	Total Area of RSA (ha)	Total percent of RSA
Heath			
Heath boulder	Occurs on rapidly to well-drained sites that contain a high proportion of boulder deposits in association with bedrock outcrop.	26,499	11
Heath lichen – hair lichen	Typically associated with eskers and the crests and upper slopes of small ridges with poorly developed, rapidly drained soils.	4,503	2
Heath lichen – <i>Cetraria</i>	Typically occurs on the lower slopes of ridges and eskers or as veneers over flat rocky plains characterized by frost boils.	1,733	1
Heath tundra	Occurs on well-drained soils.	109,826	45
Heath vegetation subtotal		142,562	58
Wetlands / Riparian			
Low shrub	Associated with imperfectly to poorly drained soils characteristic of riparian areas and depressions.	3,478	1
Tussock-hummock	Typically found in flat to low-lying areas, where soils are poorly to very poorly drained.	25,699	10
Wetlands / riparian subtotal		29,177	12
Miscellaneous			
Bare ground (rock outcrop)	Represents areas with limited to no vegetation cover and is typically associated with eskers, steep sandy slopes, and the tidal and inter-tidal beaches along Hudson's Bay.	5,263	2
Water	Associated with rivers and lakes, as well as portions of Hudson's Bay.	69,298	28
Miscellaneous subtotal		74,561	30
Total		246,300	100

Note: Some numbers are rounded for presentation purposes. Therefore, it may appear that the totals do not equal the sum of the individual values.

ha = hectares; RSA = Regional Study Area

Meliadine Interim Closure and Reclamation Plan – Update 2020		Original -V.03
2021/04/07	674942-4000-4EER-0002	Technical Report

N:\Bur_Graphics\Projects\2013\1428\13-1428-0007\GIS\Mapping\MXD\FEIS\Volume_6\Main_Volume\Figure_6.4-1_Terrain_Map_Units_Terrestrial_LSA.mxd



LEGEND

Local Study Area (LSA)

Terrestrial Disturbances

Watercourse

Waterbody

Terrain Map Units

Am - Alluvium and marine sediments, undifferentiated

DL - Disturbed land

Gh - Glaciofluvial and morainal deposits

Gk - Ice-contact stratified sediments

Mm - Nearshore sediments

Mr - Littoral sediments

Mt - Tidal flats sediments

O - Organic Deposits

R - Volcanic/sedimentary rocks

R-Mr - Volcanic/sedimentary rocks - littoral sediments

R-Tw - Volcanic/sedimentary rocks - marine washed till

Tbv - Till blanket veneer

Th - Hummocky till

Tm - Till and marine sediments, undifferentiated

Tx - Till, modified by glacial meltwater flow

Water

REFERENCE

Base data obtained from Agnico Eagle Mines Limited (AEM).
Datum: NAD 83 Projection: UTM Zone 15

PROJECT

AGNICO EAGLE MINES LIMITED
MELIADINE GOLD PROJECT
NUNAVUT

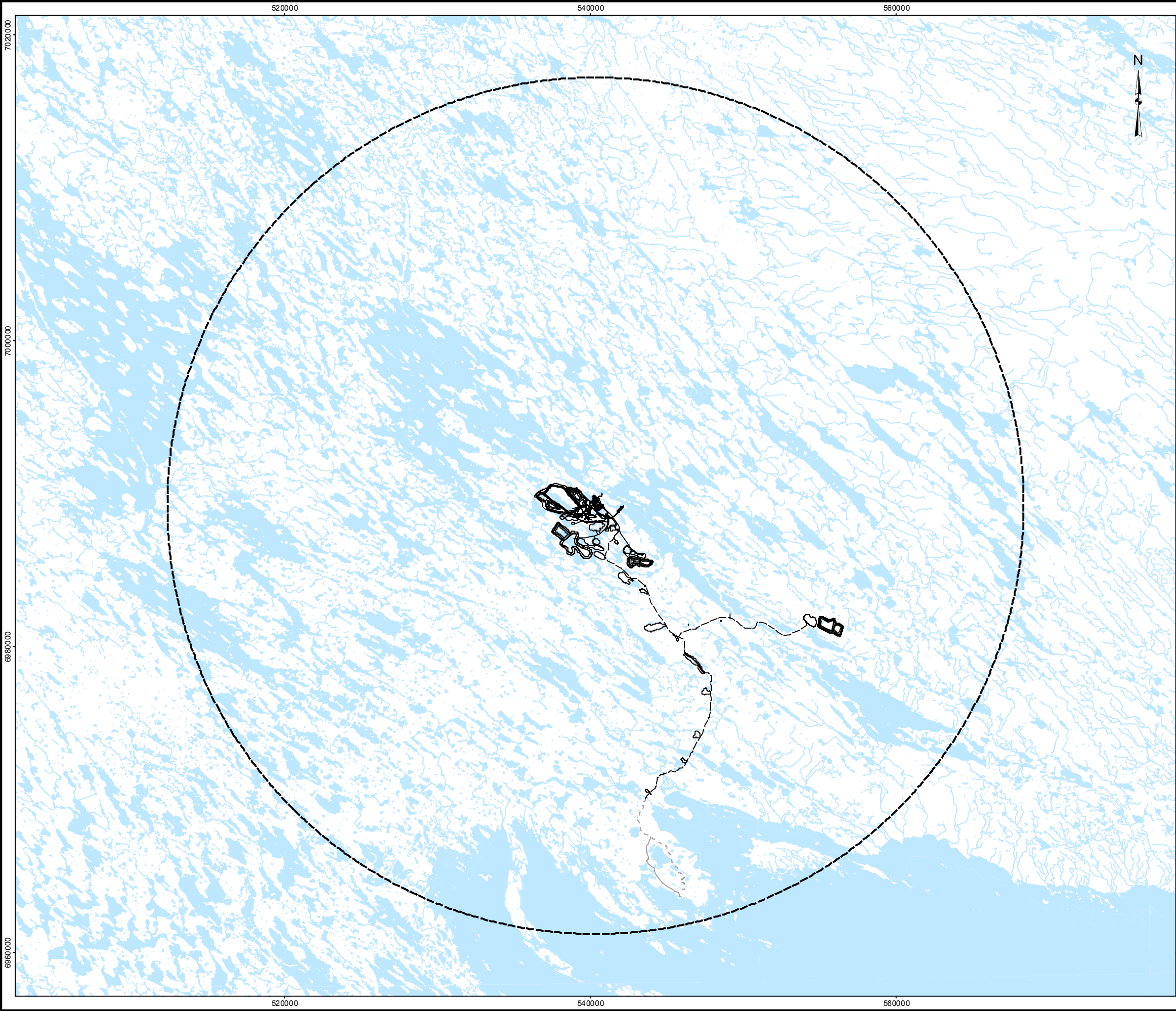
TITLE

TERRAIN MAP UNITS IN THE
TERRESTRIAL LOCAL STUDY AREA

PROJECT NO. 10-1373-0076			FILE No.	
DESIGN	DD	31 Jul. 2012	SCALE AS SHOWN	REV. 0
GIS	JW	19 Sep. 2012		
CHECK	DD	18 Jan. 2013		
REVIEW	DW	18 Jan. 2013		

FIGURE 6.4-1

N:\Bur_Graphics\Projects\2013\1428\13-1428-0007\GIS\Mapping\MXD\FEIS\Volume_6\Main_Volume\Figure_6.1-2_Regional_Study_Area_Terrestrial.mxd



LEGEND

Regional Study Area (RSA)

Proposed Project Infrastructure

All-weather Access Road (AWAR)

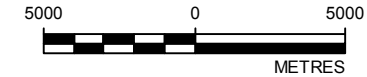
Road - New

Road - Existing


Watercourse

Waterbody

REFERENCE
Base data obtained from Agnico Eagle Mines Limited (AEM).
Datum: NAD 83 Projection: UTM Zone 15



PROJECT




AGNICO EAGLE

AGNICO EAGLE MINES LIMITED
MELIADINE GOLD PROJECT
NUNAVUT

TITLE

REGIONAL STUDY AREA



Golder Associates

PROJECT NO. 10-1373-0076			FILE No.	
DESIGN	LY	09 Nov. 2012	SCALE AS SHOWN	REV. 0
GIS	CDB	09 Nov. 2012		
CHECK	DW	17 Jan. 2013		
REVIEW	DW	17 Jan. 2013		

FIGURE 6.1-2