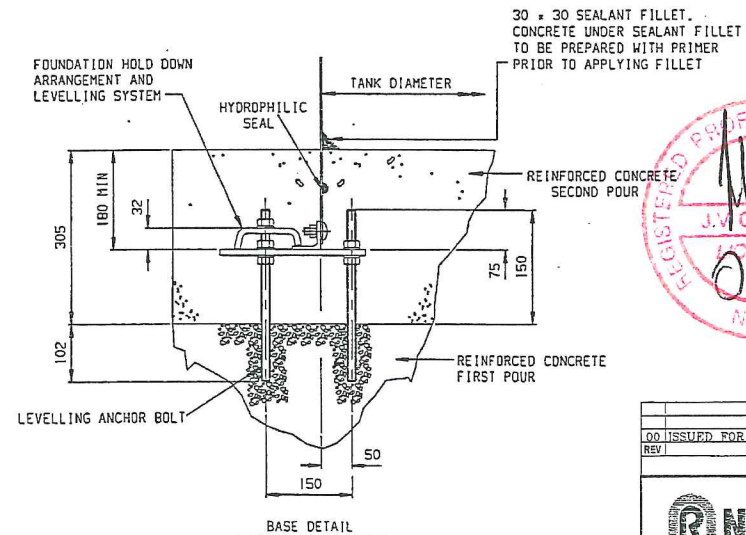
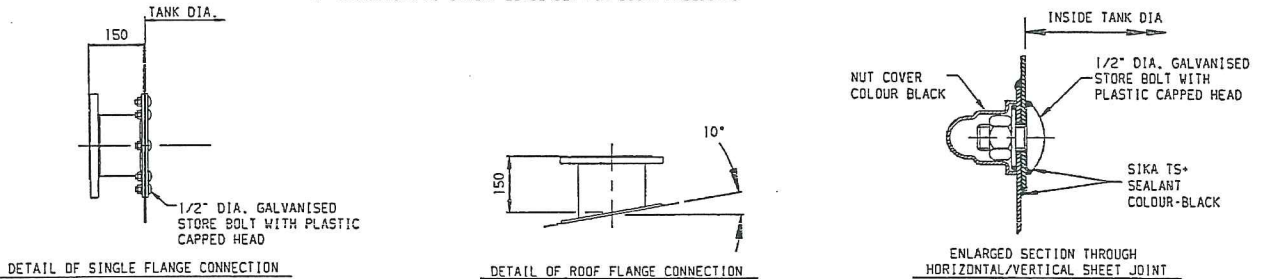


E337697-PM402-50-042-0010

ITEM	TYPE	SIZE	DESCRIPTION	ORIENTATION	RADIUS	FINISH
R1	--	20"NB (500mm)	VENT	106°	R 4280	G.R.P
R2	--	#24" (610mm)	INSP. HATCH	90°	R 4280	ALUMINIUM
R3	SINGLE	4"NB (100mm)	FLANGE	78°	R 4500	G.M.S
R4	SINGLE	2"NB (50mm)	FLANGE	72°	R 4500	G.M.S

- NOTES :
- 1. TANK EXTERNAL GLASSED COLOUR
BLUE MUNSELL SPB 2/4
INTERNAL COLOUR
BLUE MUNSELL SPB 2/4
ISOFLUSION V700 GRADE
 - 2. ROOF EXTERNAL GLASSED COLOUR
BLUE MUNSELL SPB 2/4
INTERNAL COLOUR
BLUE MUNSELL SPB 2/4
ISOFLUSION V700 GRADE
 - 3. TOP STIFFENER ANGLE FINISHED IN G.M.S.
 - 4. TAPERED ROOF BEAMS FINISHED IN G.M.S.
 - 5. BASE ANGLE FINISHED IN PRIMER COATED BLACK
 - 6. G.M.S = HOT DIPPED GALVANISED, SPECIFICATION TO BS EN ISO 1461 - 1999
 - 7. TANK DESIGNED TO SEISMIC ZONE 2A
 - 8. TANK DESIGNED TO WINDSPEED 44 M/SEC
 - 9. CONNECTION N1 INVERT LEVEL SET FOR 500mm FREEBOARD
- CONNECTOR NOTES:
- 1. ALL FLANGES ARE RAISED FACE PLATE
 - 2. FLANGES TO ANSI B16.5. (HOLES OFF CENTRE)
 - 3. ROOF INSPECTION HATCH AND TANK ACCESS MANWAY PERNASTORE DESIGN.
 - 4. ALL CONNECTORS FINISHED IN G.M.S.
 - 5. TANK ACCESS MANWAY FINISHED IN G.M.S.
 - 6. ROOF INSPECTION HATCH FINISHED IN ALUMINIUM.
 - 7. ROOF VENTS FINISHED IN GRP.



ISSUED FOR APPROVAL	10/02/2011	J.V. CASSON	L.C.	P.L.	
REV	AM/00/XXXX	DESIGN	CHECK	APPROVE	NOTES
REVISION HISTORY					
NAPIER-REID			396 M3 / DAY MARY RIVER (STP2) TREATED EFFLUENT TANK GENERAL LAYOUT		
CUSTOMER	ARCelor MITAL	PROJECT	MARY RIVER STP	SCALE	FILE NO: 11-2931 SHEET 1 OF 1
CONTRACTOR	HATCH	CONSULTING ENGINEER	HATCH	DWG. NO: 11-2931-STP2-30S	
			THIRD ANGLE	DRAWN DATE: Sep. 13, 2011	VERSION
				PLOT DATE: Sep. 13, 2011	