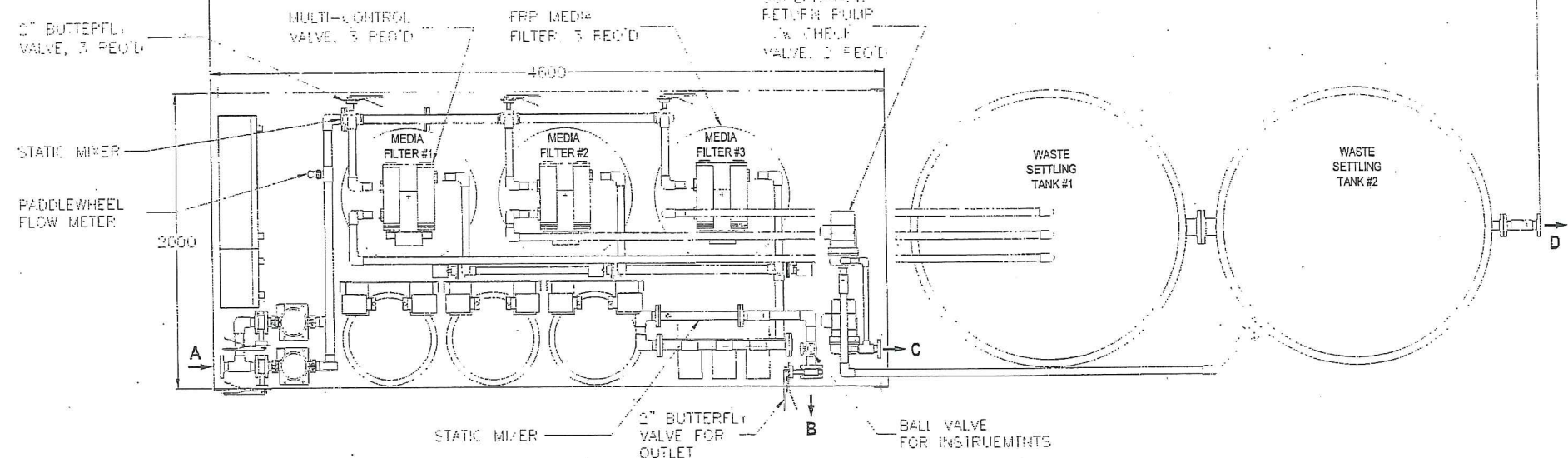
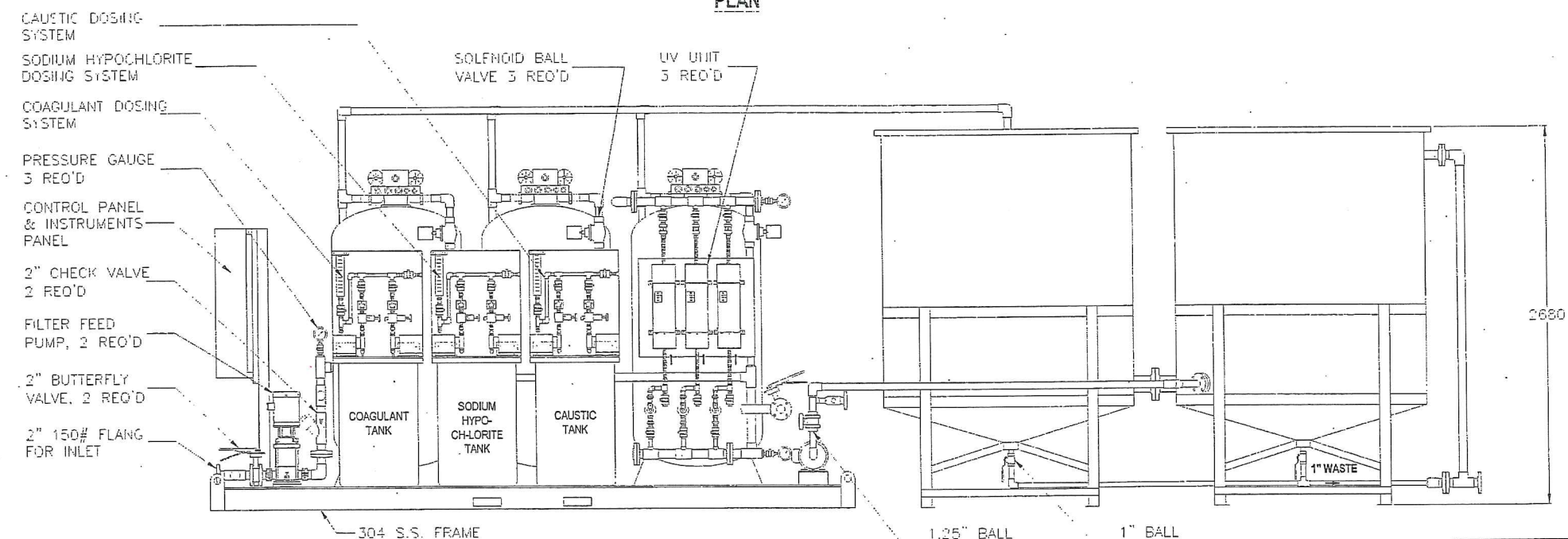


E337697-PM401-50-042-0010_SUB03.pdf



PLAN



ELEVATION

NOTES:

1. ALL DIMENSIONS ARE IN MM IF NOT OTHERWISE SPECIFIED.
2. MEDIA FILTER VESSELS ARE MADE OF FRP.
3. CHEMICAL TANKS AND WASTE SETTLING TANKS ARE MADE OF POLYETHYLENE.
4. ALL CONNECTING PIPING AND FITTINGS ARE SCH.80 PVC.
5. ALL COMPONENTS ARE PRE-ASSEMBLED ONTO 304 S.S. FRAME.
6. SOME INSTRUMENTS AND PIPING SUPPORTING ARE NOT SHOWN FOR CLARITY.

DENOTATION:

- A: RAW WATER INLET (2" 150# FLANGE)
 B: TREATED WATER OUTLET (2" 150# FLANGE)
 C: SUPERNATANT TO RAW WATER STRAGE (1.5" 150# FLANGE)
 D: WASTE WATER TO DRAIN (2" 150# FLANGE)



Since 1950 NAPIER-REID TORONTO CANADA		MARY RIVER (MINE SITE) DESIGN FLOW RATE 330 M3/DAY MEDIA-FILTRATION SYSTEM GENERAL ARRANGEMENT	
CUSTOMER ARCELOR MITTAL	PROJECT MARY RIVER WTP, BAFF-INLAND, H337697-PM401	SCALE 1:17.5 OR AS NOTED	FILE NO: 11-2630 SHEET 1 OF 1
CONTRACTOR	CONSULTING ENGINEER HTACH LIMITED	DESIGN DATE: Sep. 02, 2011	VERSION R 00
10 ALDEN ROAD, UNIT 2, MARKHAM, ON, L3R 2S1 PHONE: (905) 475-1545 FAX: (905) 475-2021 WWW.NAPIER-REID.COM		PLOT DATE: Sep. 06, 2011	

THIS DOCUMENT EMBODIES DESIGNS AND INFORMATION PROPRIETARY TO NAPIER-REID LTD. IT IS TO BE USED ONLY FOR THE PURPOSE AND BY THE ENTITY FOR WHICH IT WAS ORIGINALLY SUPPLIED. THE DOCUMENT MAY NOT BE DUPLICATED, DISCLOSED TO ANY OTHER PERSON OR ENTITY, OR USED FOR MANUFACTURE OF THE ITEM IN PART OR IN WHOLE WITHOUT THE PRIOR WRITTEN PERMISSION OF NAPIER-REID LTD.