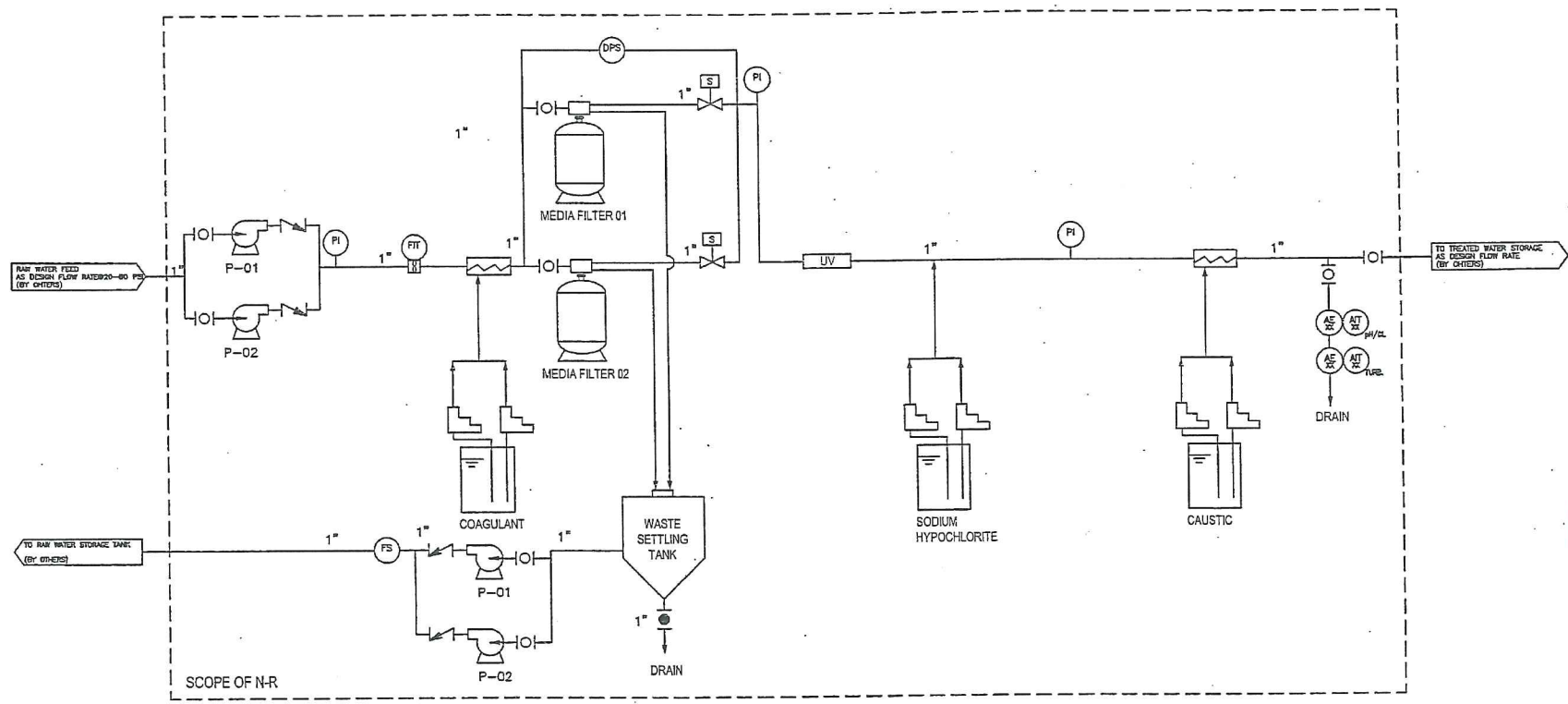


E337697-PM401-50-031-0005\_SUB04


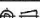


- |  |                              |  |                                  |  |   |
|--|------------------------------|--|----------------------------------|--|---|
|  | BALL VALVE                   |  | PRESSURE TRANSMITTER             |  | UF MEMBRANE MODULES                     |
|  | BUTTERFLY VALVE              |  | FLOW METER & TRANSMITTER         |  | METERING PUMP                           |
|  | SOLENOID VALVE               |  | TURBIDITY ANALYZER & TRANSMITTER |  | BLOWER                                  |
|  | IN-LINE MIXER                |  | pH ANALYZER & TRANSMITTER        |  | AUTOMATIC FILTER                        |
|  | SCREEN FILTER                |  | TEMPERATURE TRANSMITTER          |  | EJECTOR                                 |
|  | ELECTRIC ACTUATOR            |  | FLOW INDICATOR                   |  | HYDRAULIC FLOW VALVE C/W SOLENOID PILOT |
|  | CHECK VALVE                  |  | AIR COMPRESSOR                   |  |   |
|  | PRESSURE GAUGE               |  | SCREEN FILTER                    |  |   |
|  | PRESSURE TRANSMITTER         |  | HEATER                           |  |   |
|  | DIFFERENTIAL PRESSURE SWITCH |  | FLOATING LEVEL VALVE             |  |   |
|  | TEMPERATURE GAUGE            |  |                                  |  |   |

PWTP-5 RAVN RIVER AREA - 66 M3/DAY

NOTES:  
1. PIPING / WIRING OUT OF SKID TO BE BY OTHERS



00	ISSUED FOR APPROVAL	12 / 08 / 2011	YL		FL	FL			
REV	DESCRIPTION	DD / MM / YYYY	DESIG	CHEC	APPR	NOTES			
REVISION HISTORY									
 <b>Since 1950</b> <b>NAPIER-REID</b> TORONTO CANADA			<b>WATER TREATMENT PACKAGE</b> <b>MEDIA-FILTRATION SYSTEM</b> <b>P &amp; I DRAWINGS</b>						
CUSTOMER ARCELOR MITTAL		PROJECT MARY RIVER WTP. BAFF- INLAND, H337697-PM401		SCALE N/A OR AS NOTED		FILE NO.: 11-2920		SHEET 01 OF 01	
CONTRACTOR HTACH LIMITED		CONSULTING ENGINEER HTACH LIMITED		 THIRD ANGLE		DESIGN DATE: Sep. 12, 2011		VERSION R 00	
10 ALDEN ROAD, UNIT 2, MARKHAM, ON, L3R 2S1 PHONE: (905) 475-1545 FAX: (905) 475-2021 WWW.NAPIER-REID.COM									

THIS DOCUMENT EMBODIES DESIGNS AND INFORMATION PROPRIETARY TO NAPIER-REID LTD. IT IS TO BE USED ONLY FOR THE PURPOSE AND BY THE ENTITY FOR WHICH IT WAS ORIGINALLY SUPPLIED. THE DOCUMENT MAY NOT BE DUPLICATED, DISCLOSED TO ANY OTHER PERSON OR ENTITY, OR USED FOR MANUFACTURE OF THE ITEM IN PART OR IN WHOLE WITHOUT THE PRIOR WRITTEN PERMISSION OF NAPIER-REID LTD.

Napier Reid

Sep 13 2011 14:56

P005/008