

Attachment 17

Mine Site Fuel Tank Farm

(20 Pages)

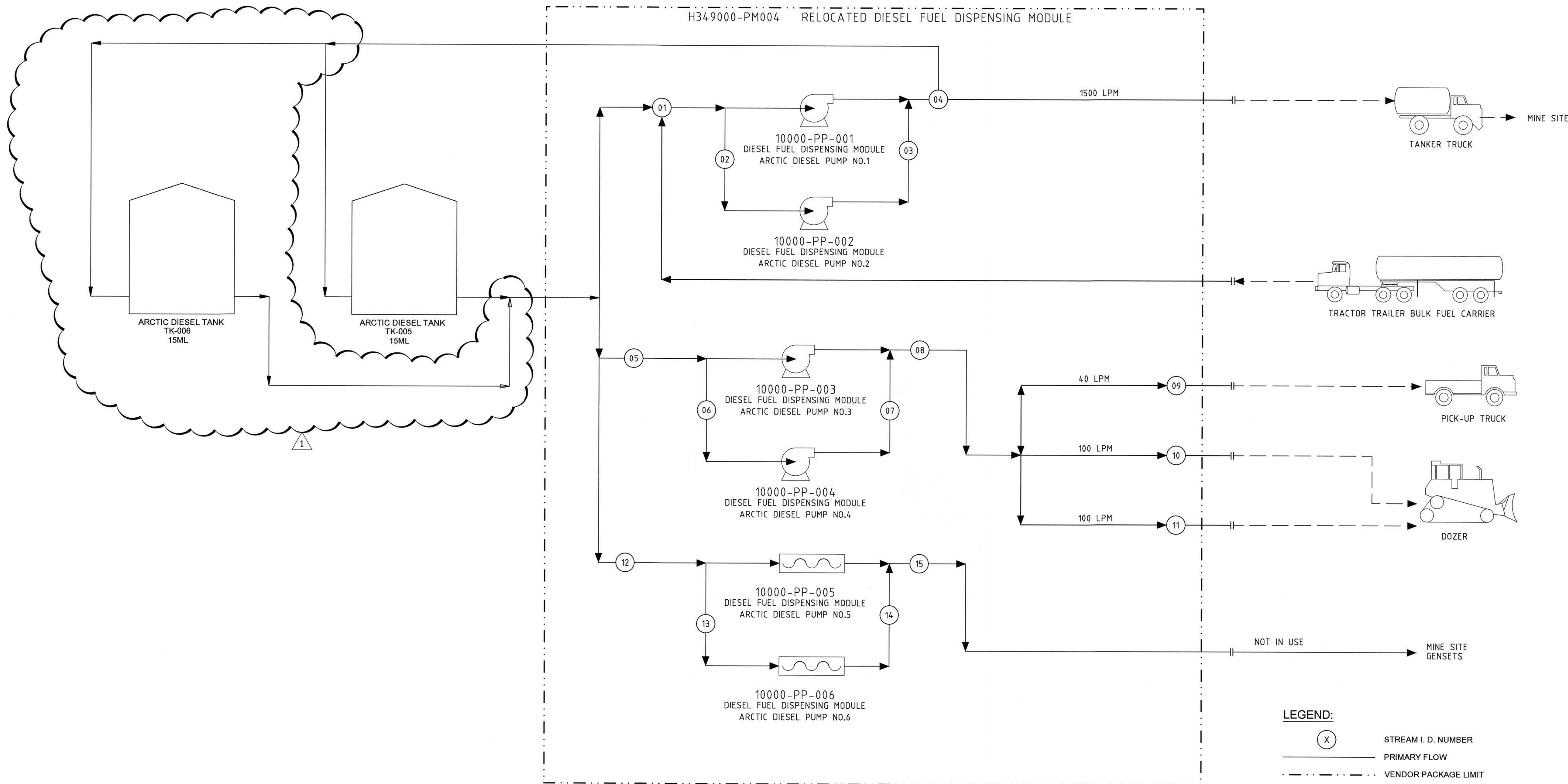
Attachment 17.1

Mine Site Fuel System Drawings

(3 Pages)

NOTES

1. TANKS ARE FILLED ONE AT A TIME
2. TANKS ARE DRAWN DOWN ONE AT A TIME
3. TANKS FILLED TO 95% OF NOMINAL CAPACITY



STREAM NUMBER	UNIT	1	2	3	4	5	6	7	8	9	10	11	12	13	14	15	16
DESIGN FLOW	L/min	1,500	1,500	1,500	1,500	1,500	1,500	-	-	40	100	100	1500	1500	-	-	-
MAX FLOW	ML/YR	-	-	-	-	-	-	-	-	-	-	-	-	-	-	-	-
DESIGN TEMPERATURE(MAX)	°C	20	20	20	20	20	20	20	20	20	20	20	20	20	20	20	20
DESIGN TEMPERATURE(MIN)	°C	-54	-54	-54	-54	-54	-54	-54	-54	-54	-54	-54	-54	-54	-54	-54	-54

H353004-00000-210-276-0001-0001	MINE SITE ADDITIONAL TANK FARM STORAGE P & ID
H353004-00000-270-276-0001-0001	PROJECT LEGEND SHEET
DRAWING No.	DRAWING TITLE
REFERENCE DRAWINGS	
REG. PROFESSIONAL	



		THIS DRAWING WAS PREPARED BY HATCH LTD. ("HATCH") FOR THE EXCLUSIVE USE OF BAFFINLAND IRON MINES LP ("CLIENT") AND ITS USE IS SUBJECT TO THE TERMS AND CONDITIONS OF THE CONTRACT BETWEEN HATCH AND THE CLIENT, INCLUDING ANY LIMITATIONS ON LIABILITY CONTAINED THEREIN. THIS DRAWING AND ITS CONTENTS REMAIN THE INTELLECTUAL PROPERTY OF HATCH SUBJECT TO CLIENT'S ROYALTY-FREE, IRREVOCABLE, PERPETUAL AND NON-EXCLUSIVE LICENSE TO USE AND REPRODUCE THE DRAWING FOR PURPOSES CONNECTED WITH THE PROJECT, INCLUDING THE CONSTRUCTION, COMPLETION, MAINTENANCE, EXTENSION, REINSTATEMENT AND REPAIR OF THE PROJECT. THIS DRAWING AND THE INFORMATION CONTAINED HEREIN, SHALL BE TREATED AS CONFIDENTIAL FOR ALL OTHER PURPOSES AND SHALL NOT BE MODIFIED WITHOUT THE WRITTEN CONSENT OF HATCH.		
1	ADDITIONAL STORAGE TANK TK-006 ADDED	SJM	MMI	18/07/25
0	ISSUED FOR CONSTRUCTION	HPC	MMI	18-07-25
No.	DESCRIPTION	BY	CHK'D	DATE
REVISIONS				

DRAFTSPERSON	H. P. CURRIE	NR	18-07-11
DESIGNER	J. MacLEAN	NR	18-07-10
CHECKER	M. MacINTYRE	Michael MacIntyre	19/02/01
DESIGN COORD.	M. MacINTYRE	Michael MacIntyre	19/02/01
RESP. ENG.	F. BUTTS	F. Butts	19/02/01
LEAD DISC. ENG.	J. MacLEAN	James MacLean	19/02/01
ENG. MANAGER	G. PEACE	G. Peace	19/02/01
AREA MANAGER	H. VENTER	H. Venter	19/02/01
CLIENT	T. ATIBA	T. Atiba	19/02/01
ROLE	NAME	SIGNATURE	DATE

SCALE NTS OR AS NOTED		DWG. No. H353004-10000-210-282-0001-0001	REV 1
SHEET SIZE: A1			

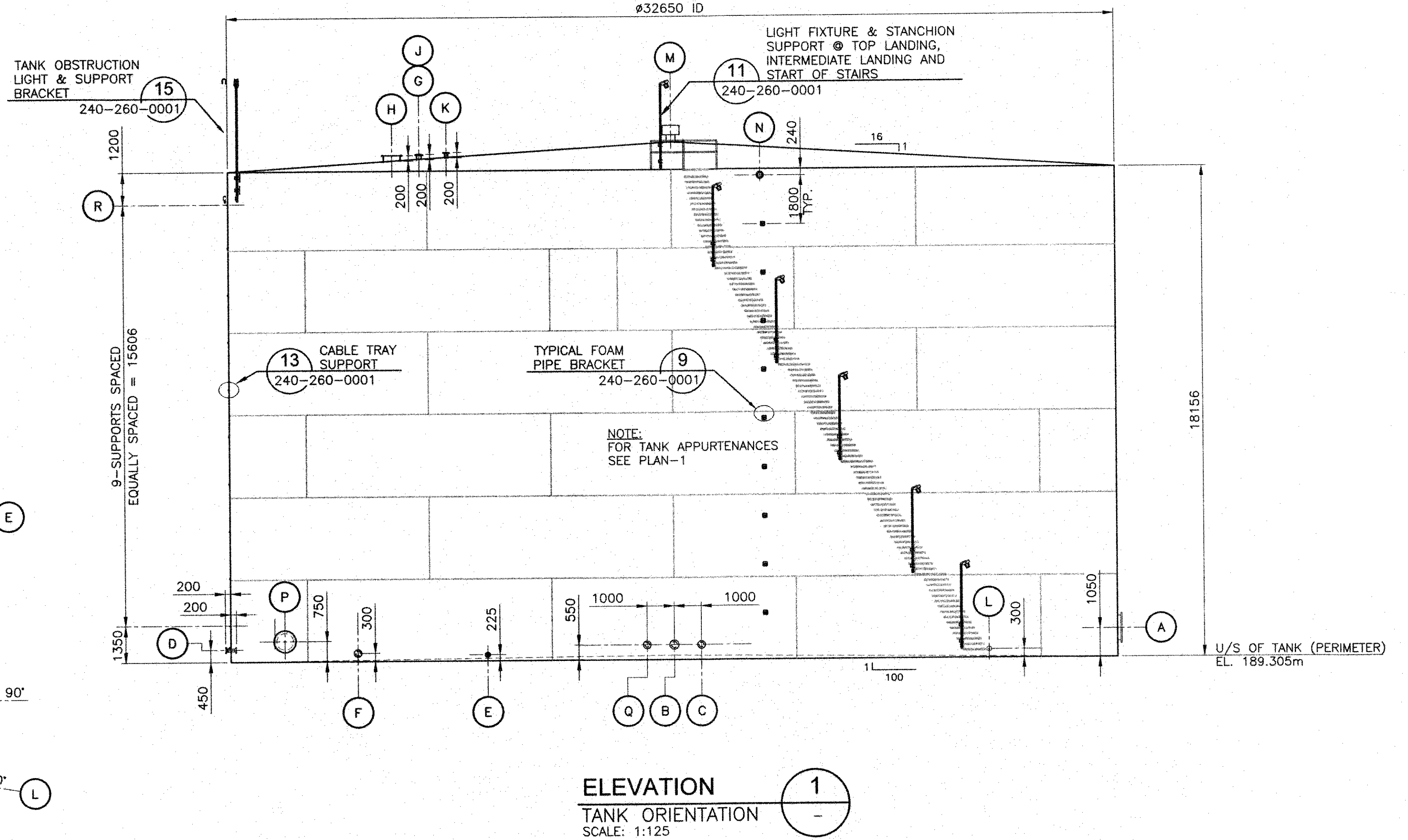
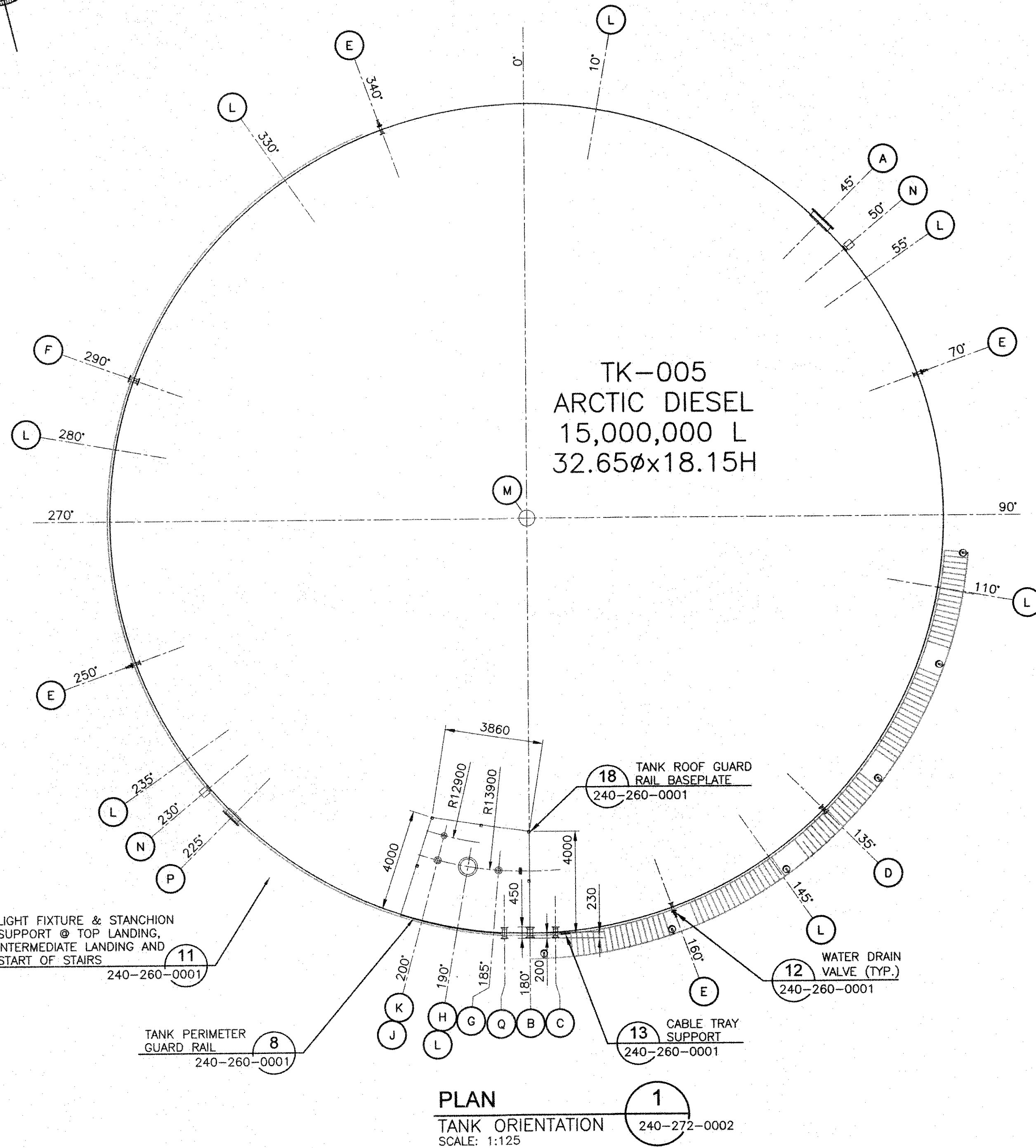
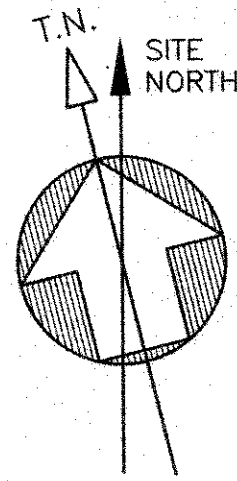
PERMIT TO PRACTICE
HATCH LTD.
Signature: *[Signature]*
Date: 19/02/01
PERMIT NUMBER: P 512
The Association of Professional Engineers, Geologists and Geophysicists of NW/TNU

HATCH

Baffinland

MARY RIVER PROJECT
BAFFINLAND IRON MINES LP

MINE SITE
FUEL SYSTEM
PROCESS FLOW DIAGRAM



TANK APPURTENANCES						
ITEM	NO.	SERVICE	SIZE	RATING	TYPE	REMARKS
A	1	SHELL MANWAY	915 (36")	API 650	FF	API 650 FIG. 5-7A
B	1	TANK SUCCTION	203 (8")	CLASS 150	RF WELD NECK	DOUBLE FLANGED /W 25mm SW HALF COUPLING ON EXTERIOR NOZZLE
C	1	TANK FILL	150 (6")	CLASS 150	RF WELD NECK	DOUBLE FLANGED /W 25mm SW HALF COUPLING ON EXTERIOR NOZZLE
D	1	SPARE SHELL NOZZLE	100 (4")	CLASS 150	RF WELD NECK	DOUBLE FLANGED
E	4	WATER DRAIN NOZZLE	75 (3")	CLASS 150	RF WELD NECK	FLANGED
F	1	SPARE SHELL NOZZLE	150 (6")	CLASS 150	RF WELD NECK	FLANGED w/ BLIND FLANGE
G	1	GAUGE HATCH	150 (6")	CLASS 150	RF SLIP ON	FLANGED
H	1	ROOF MANWAY c/w EMERGENCY VENT	610 (24")	API 650	FF	C/W COVER
J	1	RADAR GAUGE	150 (6")	CLASS 150	RF SLIP ON	SINGLE FLANGE
K	1	ROOF NOZZLE (OVERFILL PROBE)	100 (4")	CLASS 150	RF SLIP ON	BLIND FLANGED
L	8	GROUNDING LUGS				
M	1	ROOF VENT	305# (12")		NOZZLE	
N	2	FOAM CONNECTION NOZZLE	150 (6")		STUD PAD	STUD PAD
P	1	SHELL MANWAY	610 (24")	API 650	FF	API 650 FIG. 5-7A
Q	1	TANK DRAW DOWN	150 (6")	CLASS 150	RF	DOUBLE FLANGED
R	10	CABLE TRAY SUPPORT				

PERMIT TO PRACTICE
HATCH LTD.
Signature: [Signature]
Date: 11/07/25
PERMIT NUMBER: P 512
The Association of Professional Engineers, Geologists and Geophysicists of NWT/NU

ISSUED FOR CONSTRUCTION

THIS DRAWING WAS PREPARED BY HATCH LTD. (HATCH) FOR THE EXCLUSIVE USE OF BAFFINLAND IRON MINES LP (CLIENT) AND ITS USE IS SUBJECT TO THE TERMS AND CONDITIONS OF THE CONTRACT BETWEEN HATCH AND THE CLIENT, INCLUDING ANY LIMITATIONS ON LIABILITY CONTAINED THEREIN. THIS DRAWING AND ITS CONTENTS REMAIN THE INTELLECTUAL PROPERTY OF HATCH SUBJECT TO CLIENTS ROYALTY-FREE, IRREVOCABLE, PERPETUAL AND NON-EXCLUSIVE LICENSE TO USE AND REPRODUCE THE DRAWING FOR PURPOSES CONNECTED WITH THE PROJECT, INCLUDING THE CONSTRUCTION, COMPLETION, MAINTENANCE, EXTENSION, RENOVATION AND REPAIR OF THE PROJECT. THIS DRAWING AND THE INFORMATION CONTAINED HEREIN, SHALL BE TREATED AS CONFIDENTIAL FOR ALL OTHER PURPOSES AND SHALL NOT BE MODIFIED WITHOUT THE WRITTEN CONSENT OF HATCH.

HATCH

Baffinland

MARY RIVER EXPANSION PROJECT
BAFFINLAND IRON MINES LP

MINE SITE
FUEL SYSTEM
15,000,000L ARCTIC DIESEL TANK

0 ISSUED FOR CONSTRUCTION

A ISSUED FOR PARALLEL REVIEW

No. DESCRIPTION

BY CHK'D DATE

REVISIONS

DRAFTSPERSON	H. P. CURRIE	NR	18-07-04
DESIGNER	K. MacLEAN	NR	18-07-04
CHECKER	M. MacINTYRE	18107125	18107125
DESIGN COORD.	M. MacINTYRE	18107125	18107125
RESP. ENG.	F. BUTTS	18107125	18107125
LEAD DISC. ENG.	K. MacLEAN	18107125	18107125
ENG. MANAGER	D. STANGER	18107125	18107125
PROJ. MANAGER	T. ATIBA	18107125	18107125
CLIENT			

DRAWING APPROVAL STATUS: Approved for Construction

SCALE AS NOTED OR AS NOTED

DWG. No. H353004-10000-240-270-0001-0001

REV 0

SHEET SIZE: A1

