

LEGEND:				EXISTING BORROW AREA RECLAMATION PRIORITY (FROM EBA TETRATECH 2014)			

NOTES:

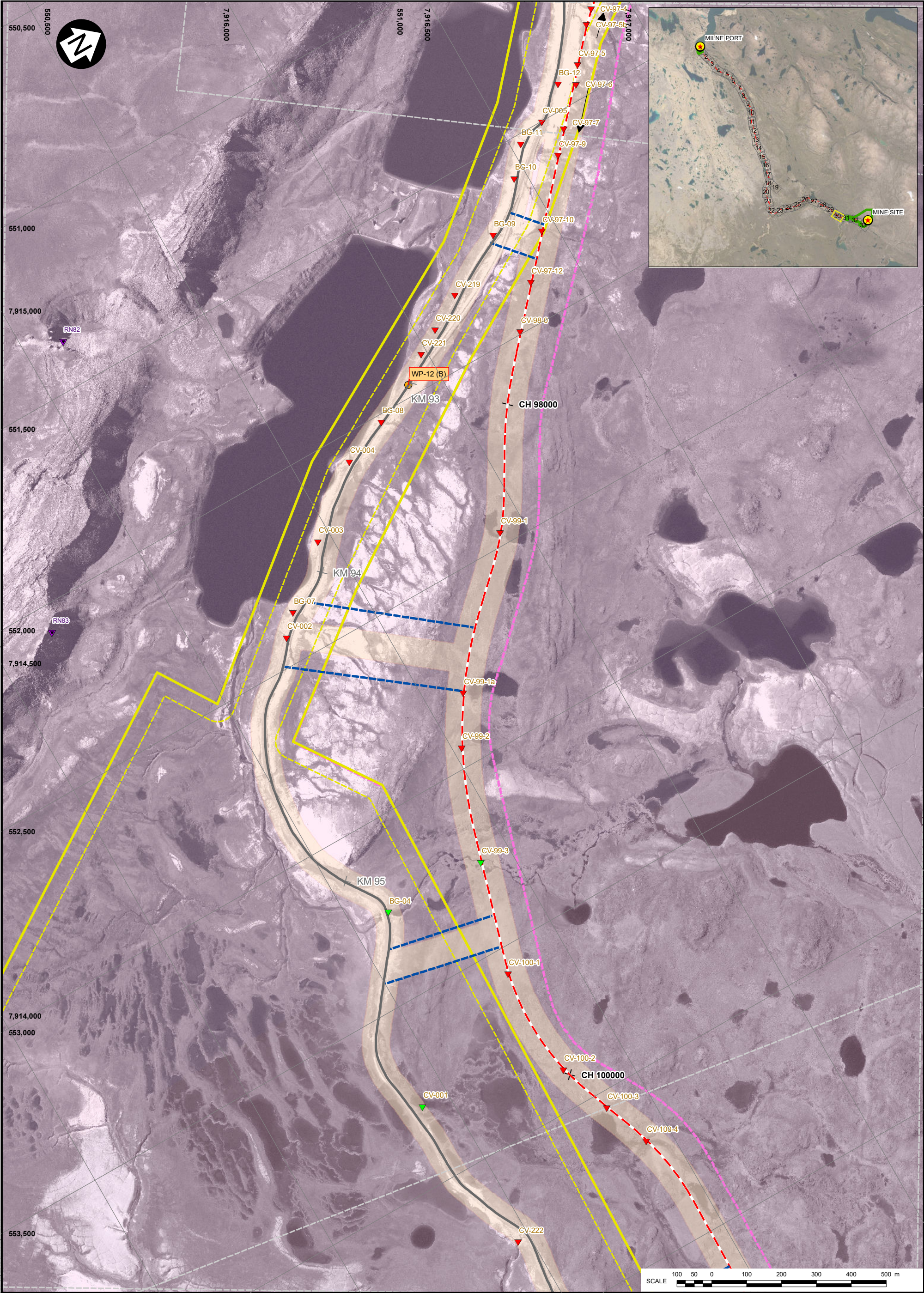
1. COORDINATE GRID IS IN METRES. COORDINATE SYSTEM: NAD 1983 UTM ZONE 17N.

2. DETAILED WATER AND ORTHO IMAGERY BASED ON OCTOBER 2018 SATELLITE IMAGERY PROVIDED BY BAFFINLAND.

3. FIGURE CREATED BY KNIGHT PIESOLD LTD.

REV	DATE	ISSUED WITH MEMO	DESCRIPTION	RAC DESIGNED	AS/CJV DRAWN	OG REVIEWED
0	02JUL19	ISSUED WITH MEMO				

BAFFINLAND IRON MINES CORPORATION			
MARY RIVER PROJECT			
NORTH RAILWAY DETAILED CONSTRUCTION PHASE LAYOUT (SHEET 29 OF 33)			
PIA NO. NB102-181/53		REF NO. NB19-00516	
Knight Piésold CONSULTING		FIGURE 32	
		REV 0	



LEGEND:

TOTE ROAD km POST

NORTH RAIL CHANGE (m)

QUARRY AREA

LAYDOWN AREA

FISH BEARING

POTENTIAL

NONE

MILNE INLET TOTE ROAD

TOTE ROAD REALIGNMENT

PROPOSED NORTH RAILWAY

STREAM DIVERSION

PROPOSED ACCESS ROAD

TEMPORARY HAUL ROAD

EXPLOSIVES FACILITIES

RAPTOR NEST

COMMUNICATION TOWERS

SPOILS DEPOSIT LOCATIONS

BRIDGE LOCATIONS

APPROVED WATER SOURCE

PROPOSED CONSTRUCTION WATER SOURCE

POTENTIAL DEVELOPMENT AREA (MINE, PORT)

POTENTIAL DEVELOPMENT AREA (TOTE ROAD, NORTH RAIL)

COMMERCIAL LEASE BOUNDARY

UNDISTURBED BUFFER FROM COMMERCIAL LEASE BOUNDARY

PROPOSED ADDITIONAL COMMERCIAL LEASE AREA (IOL)

PROPOSED CROWN LAND LEASE

EXISTING BORROW AREA RECLAMATION PRIORITY (FROM EBA TETRATECH 2014)

A+ VERY HIGH PRIORITY

A HIGH PRIORITY

B MODERATE PRIORITY

C LOW PRIORITY; STABLE (NOT SHOWN ON THIS FIGURE)

FLOW DIRECTION

REFERENCE SHEET EXTENT

IOL SURFACE AND SUBSURFACE

IOL SURFACE ONLY

NOTES:

1. COORDINATE GRID IS IN METRES. COORDINATE SYSTEM: NAD 1983 UTM ZONE 17N.

2. DETAILED WATER AND ORTHO IMAGERY BASED ON OCTOBER 2018 SATELLITE IMAGERY PROVIDED BY BAFFINLAND.

3. FIGURE CREATED BY KNIGHT PIESOLD LTD.

0	02JUL19	ISSUED WITH MEMO		RAC	AS/CJV	OG
REV	DATE	DESCRIPTION		DESIGNED	DRAWN	REVIEWED

BAFFINLAND IRON MINES CORPORATION

MARY RIVER PROJECT

NORTH RAILWAY
DETAILED CONSTRUCTION PHASE LAYOUT
(SHEET 30 OF 33)

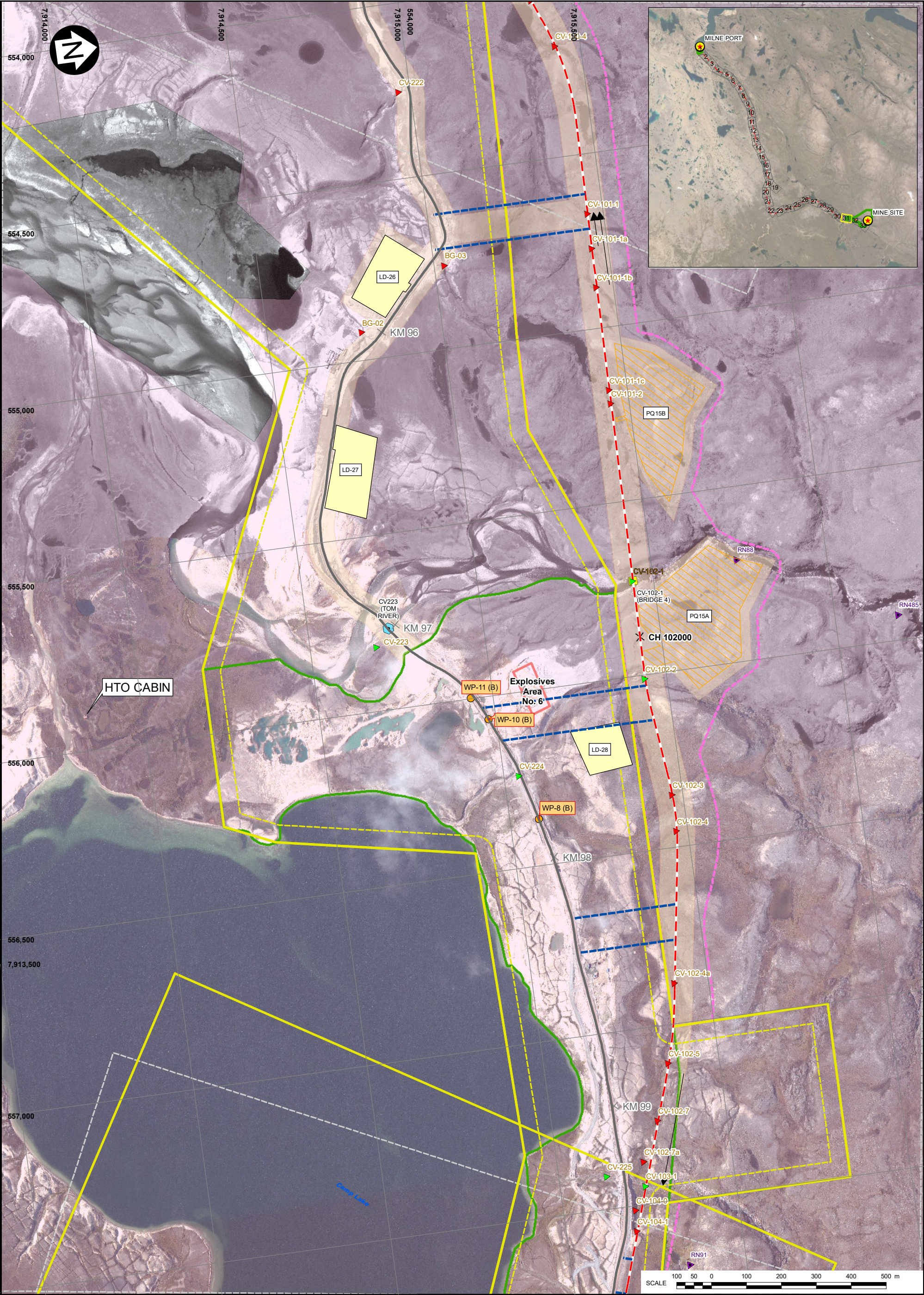
KNIGHT PIESOLD CONSULTING

P/A NO.
NB102-181/53

REF NO.
NB19-00516

FIGURE 33

REV
0



LEGEND:

MILNE INLET TOTE ROAD

TOTE ROAD REALIGNMENT

NORTH RAIL CHANGE (m)

QUARRY AREA

LAYDOWN AREA

FISH HABITAT ASSESSMENT

FISH BEARING

POTENTIAL

NONE

BRIDGE LOCATIONS

APPROVED WATER SOURCE

PROPOSED CONSTRUCTION WATER SOURCE

POTENTIAL DEVELOPMENT AREA (MINE, PORT)

POTENTIAL DEVELOPMENT AREA (TOTE ROAD, NORTH RAIL)

COMMERCIAL LEASE BOUNDARY

UNDISTURBED BUFFER FROM COMMERCIAL LEASE BOUNDARY

PROPOSED ADDITIONAL COMMERCIAL LEASE AREA (IOL)

PROPOSED CROWN LAND LEASE

EXISTING BORROW AREA RECLAMATION PRIORITY (FROM EBA TETRATECH, 2014)

A+ VERY HIGH PRIORITY

A HIGH PRIORITY

B MODERATE PRIORITY

C LOW PRIORITY; STABLE (NOT SHOWN ON THIS FIGURE)

FLOW DIRECTION

REFERENCE SHEET EXTENT

IOL SURFACE AND SUBSURFACE

IOL SURFACE ONLY

NOTES:

1. COORDINATE GRID IS IN METRES. COORDINATE SYSTEM: NAD 1983 UTM ZONE 17N.

2. DETAILED WATER AND ORTHO IMAGERY BASED ON OCTOBER 2018 SATELLITE IMAGERY PROVIDED BY BAFFINLAND.

3. FIGURE CREATED BY KNIGHT PIESOLD LTD.

REV	DATE	ISSUED WITH MEMO	DESCRIPTION	RAC DESIGNED	AS/CJV DRAWN	OG REVIEWED
0	02JUL19	ISSUED WITH MEMO				

BAFFINLAND IRON MINES CORPORATION

MARY RIVER PROJECT

NORTH RAILWAY

DETAILED CONSTRUCTION PHASE LAYOUT

(SHEET 31 OF 33)

PIA NO.

NB102-181/53

REF NO.

NB19-00516

FIGURE 34

REV 0

Knights **Piesold**

CONSULTING