

LEGEND:

WATER

SMALL CATCHMENT

MEDIUM CATCHMENT

LARGE CATCHMENT

EXTRA LARGE CATCHMENT

FISH BEARING STATUS

YES

POTENTIAL

RIVER/STREAM/DRAINAGE

MILNE INLET TOTE ROAD

NOTES:
1. COORDINATE GRID IS IN METRES.
COORDINATE SYSTEM: NAD 1983 UTM ZONE 17N.
2. BASE MAP: © HER MAJESTY THE QUEEN IN RIGHTS OF CANADA DEPARTMENT OF NATURAL RESOURCES (2009). ALL RIGHTS RESERVED.
3. CONTOUR INTERVAL IS 40 METRES.
4. CATCHMENT BASED ON JULY 2006 INSPECTIONS.

BAFFINLAND IRON MINES CORPORATION

MARY RIVER

MILNE INLET TOTE ROAD
WATER CROSSINGS AND CATCHMENTS

Knight Piésold
CONSULTING

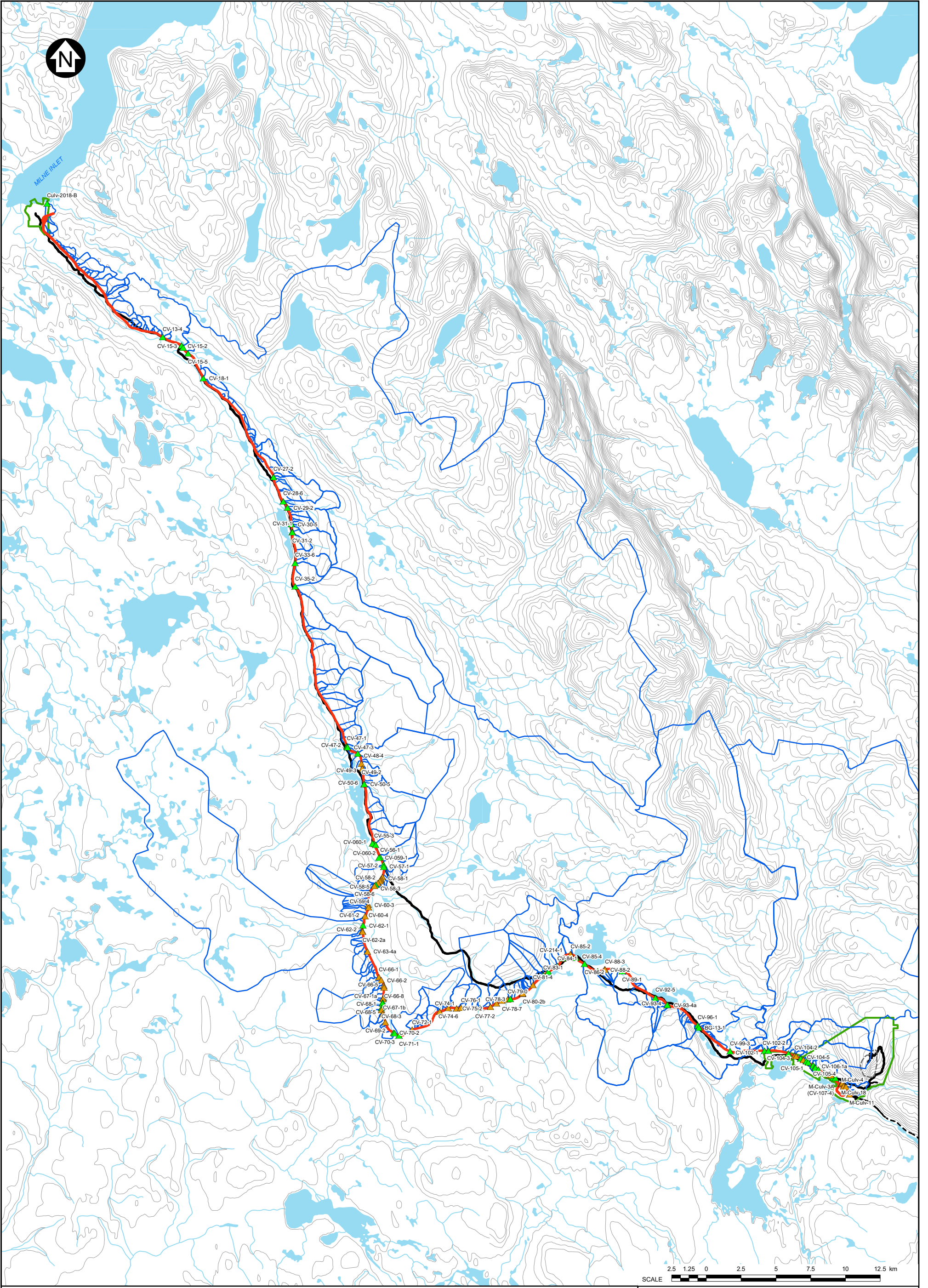
PIA NO.
NB102-181/53

REF NO.
NB19-00516

FIGURE 1

REV
0

SAVED: 11/02/2001 8:15:30A\GIS\Figs\B26 RO.mxd, Jul 02, 2019 3:01 PM, valenti



LEGEND:

- WATER
- CATCHMENT BOUNDARY
- RIVER/STREAM/DRAINAGE
- MILNE INLET TOTE ROAD
- NORTH RAILWAY ALIGNMENT

FISH BEARING STATUS

- YES
- POTENTIAL

NOTES:

- COORDINATE GRID IS IN METRES.
- COORDINATE SYSTEM: NAD 1983 UTM ZONE 17N.
- BASE MAP: © HER MAJESTY THE QUEEN IN RIGHTS OF CANADA DEPARTMENT OF NATURAL RESOURCES (2009). ALL RIGHTS RESERVED.
- CONTOUR INTERVAL IS 40 METRES.

| | | | | | |
|-----|-----------|------------------|----------|-------|----------|
| 0 | 02 JUL 19 | ISSUED WITH MEMO | RAC | CJV | OG |
| REV | DATE | DESCRIPTION | DESIGNED | DRAWN | REVIEWED |

BAFFINLAND IRON MINES CORPORATION

MARY RIVER

**PROPOSED NORTH RAILWAY
WATER CROSSINGS AND CATCHMENTS**

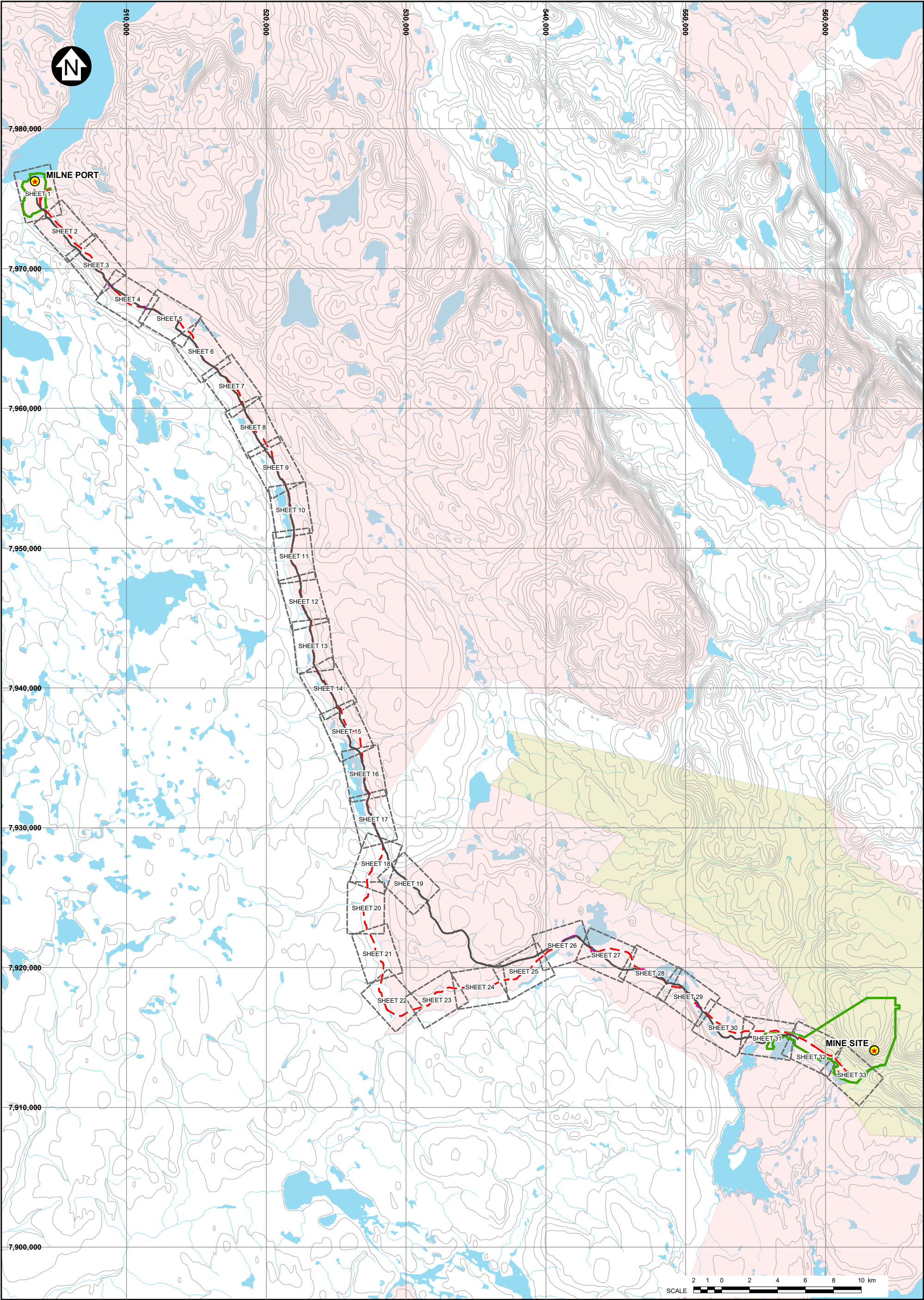
PIA NO.
NB102-181/53

REF NO.
NB19-00516

FIGURE 2

REV 0

SAVED: I:\10200181\53A\GIS\Figs\B27 RO.mxd, Jul 02, 2019 3:05 PM, valenti



LEGEND:

MILNE PORT / MINE SITE

MILNE INLET TOTE ROAD

TOTE ROAD REALIGNMENT

PROPOSED NORTH RAILWAY

IOL SURFACE AND SUBSURFACE

IOL SURFACE ONLY

REFERENCE SHEET EXTENT

POTENTIAL DEVELOPMENT AREA

WATER

- NOTES:**
- COORDINATE GRID IS IN METRES.
COORDINATE SYSTEM: NAD 1983 UTM ZONE 17N.
 - BASE MAP: HER MAJESTY THE QUEEN IN RIGHTS OF CANADA,
DEPARTMENT OF NATURAL RESOURCES, (2004).
 - FIGURE CREATED BY KNIGHT PIESOLD LTD.

BAFFINLAND IRON MINES CORPORATION

MARY RIVER PROJECT

NORTH RAILWAY KEY PLAN

| | | | | | |
|-----|-----------|------------------|----------|--------|----------|
| 0 | 02/JUL/19 | ISSUED WITH MEMO | RAC | AS/CJV | OG |
| REV | DATE | DESCRIPTION | DESIGNED | DRAWN | REVIEWED |

Knight Piesold
CONSULTING

P/A NO.
NB102-181/53

REF NO.
NB19-00516

FIGURE 3

REV
0



LEGEND:

— MILNE INLET TOTE ROAD

— TOTE ROAD REALIGNMENT

— PROPOSED NORTH RAILWAY

— STREAM DIVERSION

— PROPOSED ACCESS ROAD

— TEMPORARY HAUL ROAD

— EXPLOSIVES FACILITIES

— RAPTOR NEST

— COMMUNICATION TOWERS

— SPOILS DEPOSIT LOCATIONS

— BRIDGE LOCATIONS

— APPROVED WATER SOURCE

— PROPOSED CONSTRUCTION WATER SOURCE

— POTENTIAL DEVELOPMENT AREA (MINE, PORT)

— POTENTIAL DEVELOPMENT AREA (TOTE ROAD, NORTH RAIL)

— COMMERCIAL LEASE BOUNDARY

— UNDISTURBED BUFFER FROM COMMERCIAL LEASE BOUNDARY

— PROPOSED ADDITIONAL COMMERCIAL LEASE AREA (IOL)

— PROPOSED CROWN LAND LEASE

— FISH HABITAT ASSESSMENT

— FISH BEARING

— POTENTIAL

— NONE

— EXISTING BORROW AREA RECLAMATION PRIORITY (FROM EBA TETRATECH 2014)

— A+ VERY HIGH PRIORITY

— A HIGH PRIORITY

— B MODERATE PRIORITY

— C LOW PRIORITY; STABLE (NOT SHOWN ON THIS FIGURE)

— FLOW DIRECTION

— REFERENCE SHEET EXTENT

— IOL SURFACE AND SUBSURFACE

— IOL SURFACE ONLY

NOTES:

1. COORDINATE GRID IS IN METRES. COORDINATE SYSTEM: NAD 1983 UTM ZONE 17N.

2. DETAILED WATER AND ORTHO IMAGERY BASED ON OCTOBER 2018 SATELLITE IMAGERY PROVIDED BY BAFFINLAND.

3. FIGURE CREATED BY KNIGHT PIESOLD LTD.

| | | | | | |
|-----|---------|------------------|----------|--------|----------|
| 0 | 02JUL19 | ISSUED WITH MEMO | RAC | AS/CJV | OG |
| REV | DATE | DESCRIPTION | DESIGNED | DRAWN | REVIEWED |

BAFFINLAND IRON MINES CORPORATION

MARY RIVER PROJECT

NORTH RAILWAY

DETAILED CONSTRUCTION PHASE LAYOUT

(SHEET 1 OF 33)

P/A NO.

NB102-181/53

REF NO.

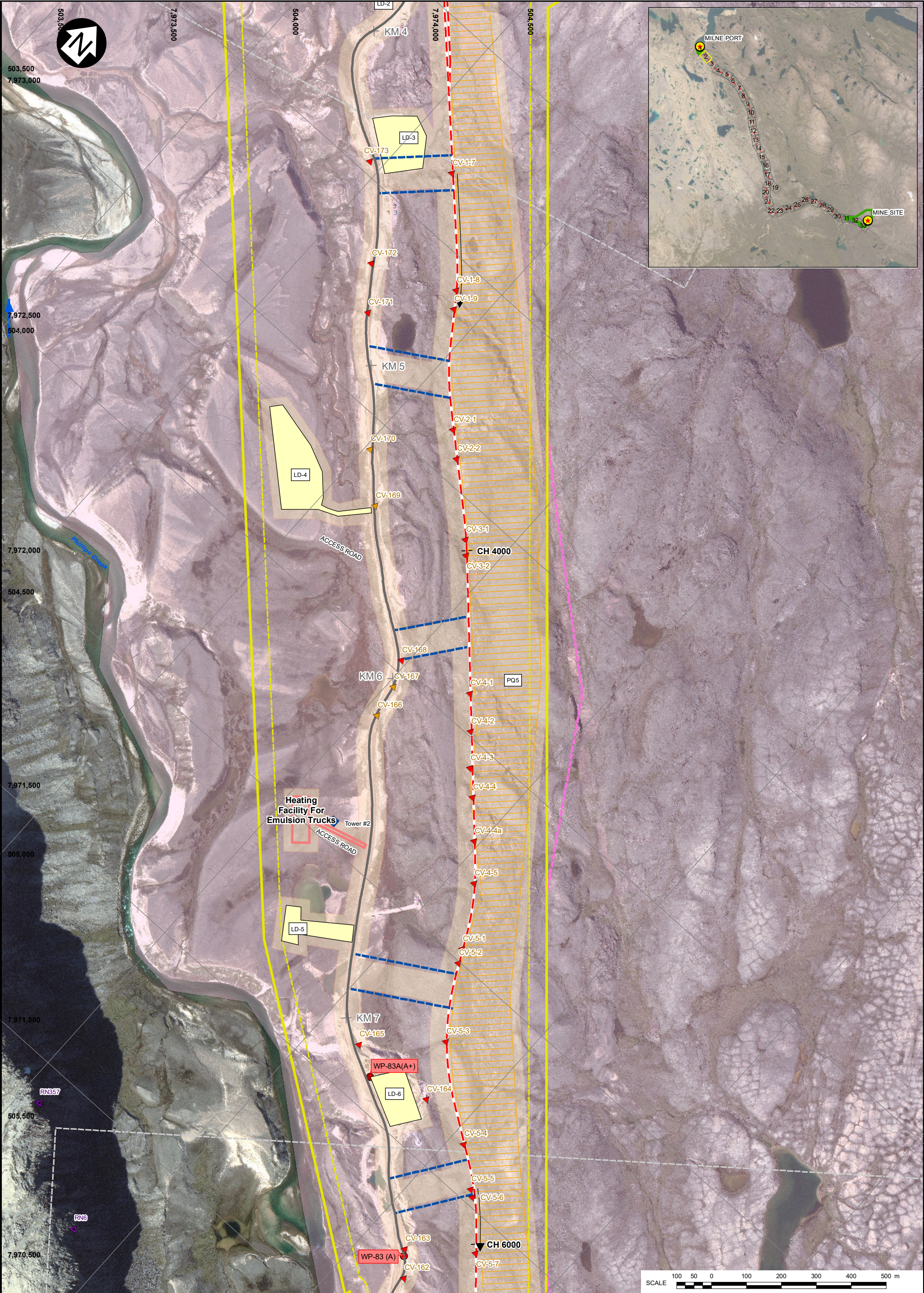
NB19-00516

FIGURE 4

REV 0

Knights Piesold

CONSULTING



LEGEND:

MILNE INLET TOTE ROAD

TOTE ROAD REALIGNMENT

NORTH RAIL CHANGE (m)

QUARRY AREA

LAYDOWN AREA

FISH BEARING

POTENTIAL

NONE

BRIDGE LOCATIONS

APPROVED WATER SOURCE

PROPOSED CONSTRUCTION WATER SOURCE

POTENTIAL DEVELOPMENT AREA (MINE, PORT)

POTENTIAL DEVELOPMENT AREA (TOTE ROAD, NORTH RAIL)

COMMERCIAL LEASE BOUNDARY

UNDISTURBED BUFFER FROM COMMERCIAL LEASE BOUNDARY

PROPOSED ADDITIONAL COMMERCIAL LEASE AREA (IOL)

PROPOSED CROWN LAND LEASE

EXPLOSIVES FACILITIES

RAPTOR NEST

COMMUNICATION TOWERS

SPOILS DEPOSIT LOCATIONS

A+ VERY HIGH PRIORITY

A HIGH PRIORITY

B MODERATE PRIORITY

C LOW PRIORITY; STABLE (NOT SHOWN ON THIS FIGURE)

FLOW DIRECTION

REFERENCE SHEET EXTENT

IOL SURFACE AND SUBSURFACE

IOL SURFACE ONLY

NOTES:

1. COORDINATE GRID IS IN METRES. COORDINATE SYSTEM: NAD 1983 UTM ZONE 17N.

2. DETAILED WATER AND ORTHO IMAGERY BASED ON OCTOBER 2018 SATELLITE IMAGERY PROVIDED BY BAFFINLAND.

3. FIGURE CREATED BY KNIGHT PIESOLD LTD.

0

02/JUL/19

ISSUED WITH MEMO

DESCRIPTION

RAC

AS/CJV

OG

DESIGNED

DRAWN

REVIEWED

BAFFINLAND IRON MINES CORPORATION

MARY RIVER PROJECT

NORTH RAILWAY

DETAILED CONSTRUCTION PHASE LAYOUT

(SHEET 2 OF 33)

PIA NO.

NB102-181/53

REF NO.

NB19-00516

FIGURE 5

REV

0