

**LEGEND:**

— MILNE INLET TOTE ROAD

— TOTE ROAD REALIGNMENT

— NORTH RAIL CHANAGE (m)

— QUARRY AREA

— LAYDOWN AREA

**FISH HABITAT ASSESSMENT**

▲ FISH BEARING

▲ POTENTIAL

▲ NONE

— SPOILS DEPOSIT LOCATIONS

— BRIDGE LOCATIONS

— APPROVED WATER SOURCE

— PROPOSED CONSTRUCTION WATER SOURCE

— POTENTIAL DEVELOPMENT AREA (MINE, PORT)

— POTENTIAL DEVELOPMENT AREA (TOTE ROAD, NORTH RAIL)

— COMMERCIAL LEASE BOUNDARY

— UNDISTURBED BUFFER FROM COMMERCIAL LEASE BOUNDARY

— PROPOSED ADDITIONAL COMMERCIAL LEASE AREA (IOL)

— PROPOSED CROWN LAND LEASE

**EXISTING BORROW AREA RECLAMATION PRIORITY (FROM EBA TETRATECH, 2014)**

● A+ VERY HIGH PRIORITY

● A HIGH PRIORITY

● B MODERATE PRIORITY

● C LOW PRIORITY; STABLE (NOT SHOWN ON THIS FIGURE)

— FLOW DIRECTION

— IOL SURFACE AND SUBSURFACE

— IOL SURFACE ONLY

— REFERENCE SHEET EXTENT

**NOTES:**

1. COORDINATE GRID IS IN METRES. COORDINATE SYSTEM: NAD 1983 UTM ZONE 17N.

2. DETAILED WATER AND ORTHO IMAGERY BASED ON OCTOBER 2018 SATELLITE IMAGERY PROVIDED BY BAFFINLAND.

3. FIGURE CREATED BY KNIGHT PIESOLD LTD.

0	02JUL19	ISSUED WITH MEMO	RAC	AS/CJV	OG
REV	DATE	DESCRIPTION	DESIGNED	DRAWN	REVIEWED

BAFFINLAND IRON MINES CORPORATION

MARY RIVER PROJECT

**NORTH RAILWAY**

**DETAILED CONSTRUCTION PHASE LAYOUT**

**(SHEET 11 OF 33)**

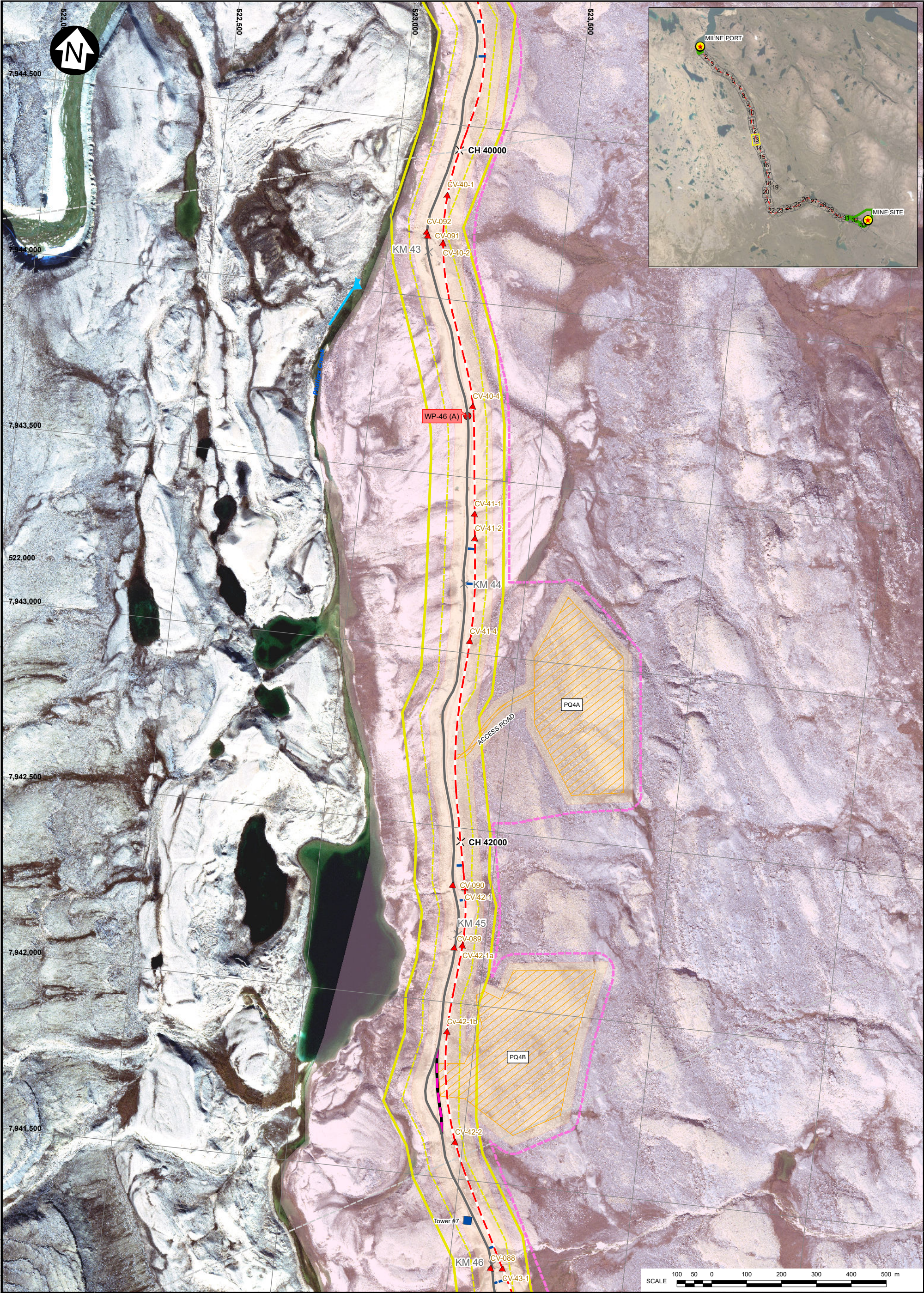
**kp Knight Piésold CONSULTING**

P/A NO.	REF NO.
NB102-181/53	NB19-00516
<b>FIGURE 14</b>	
REV 0	









**LEGEND:**

— MILNE INLET TOTE ROAD

— TOTE ROAD REALIGNMENT

— PROPOSED NORTH RAILWAY

— STREAM DIVERSION

— PROPOSED ACCESS ROAD

— TEMPORARY HAUL ROAD

— EXPLOSIVES FACILITIES

— RAPTOR NEST

— COMMUNICATION TOWERS

— SPOILS DEPOSIT LOCATIONS

— BRIDGE LOCATIONS

— APPROVED WATER SOURCE

— PROPOSED CONSTRUCTION WATER SOURCE

— POTENTIAL DEVELOPMENT AREA (MINE, PORT)

— POTENTIAL DEVELOPMENT AREA (TOTE ROAD, NORTH RAIL)

— COMMERCIAL LEASE BOUNDARY

— UNDISTURBED BUFFER FROM COMMERCIAL LEASE BOUNDARY

— PROPOSED ADDITIONAL COMMERCIAL LEASE AREA (IOL)

— PROPOSED CROWN LAND LEASE

● A+ VERY HIGH PRIORITY

● A HIGH PRIORITY

● B MODERATE PRIORITY

● C LOW PRIORITY; STABLE (NOT SHOWN ON THIS FIGURE)

— FLOW DIRECTION

— REFERENCE SHEET EXTENT

— IOL SURFACE AND SUBSURFACE

— IOL SURFACE ONLY

**NOTES:**

1. COORDINATE GRID IS IN METRES. COORDINATE SYSTEM: NAD 1983 UTM ZONE 17N.

2. DETAILED WATER AND ORTHO IMAGERY BASED ON OCTOBER 2018 SATELLITE IMAGERY PROVIDED BY BAFFINLAND.

3. FIGURE CREATED BY KNIGHT PIESOLD LTD.

REV	DATE	ISSUED WITH MEMO	RAC DESIGNED	AS/CJV DRAWN	OG REVIEWED
0	02JUL19	ISSUED WITH MEMO			

BAFFINLAND IRON MINES CORPORATION

MARY RIVER PROJECT

**NORTH RAILWAY**

**DETAILED CONSTRUCTION PHASE LAYOUT**

**(SHEET 13 OF 33)**

**kp** Knight Piésold  
CONSULTING

P/A NO.	REF NO.
NB102-181/53	NB19-00516

**FIGURE 16**

REV 0