

LEGEND:

TOTE ROAD km POST

NORTH RAIL CHANGE (m)

QUARRY AREA

LAYDOWN AREA

FISH BEARING

POTENTIAL

NONE

MILNE INLET TOTE ROAD

TOTE ROAD REALIGNMENT

PROPOSED NORTH RAILWAY

STREAM DIVERSION

PROPOSED ACCESS ROAD

TEMPORARY HAIL ROAD

EXPLOSIVES FACILITIES

RAPTOR NEST

COMMUNICATION TOWERS

SPOILS DEPOSIT LOCATIONS

BRIDGE LOCATIONS

APPROVED WATER SOURCE

PROPOSED CONSTRUCTION WATER SOURCE

POTENTIAL DEVELOPMENT AREA (MINE, PORT)

POTENTIAL DEVELOPMENT AREA (TOTE ROAD, NORTH RAIL)

COMMERCIAL LEASE BOUNDARY

UNDISTURBED BUFFER FROM COMMERCIAL LEASE BOUNDARY

PROPOSED ADDITIONAL COMMERCIAL LEASE AREA (IOL)

PROPOSED CROWN LAND LEASE

EXISTING BORROW AREA RECLAMATION PRIORITY (FROM EBA TETRATECH 2014)

A+ VERY HIGH PRIORITY

A HIGH PRIORITY

B MODERATE PRIORITY

C LOW PRIORITY; STABLE (NOT SHOWN ON THIS FIGURE)

FLOW DIRECTION

REFERENCE SHEET EXTENT

IOL SURFACE AND SUBSURFACE

IOL SURFACE ONLY

NOTES:

1. COORDINATE GRID IS IN METRES. COORDINATE SYSTEM: NAD 1983 UTM ZONE 17N.

2. DETAILED WATER AND ORTHO IMAGERY BASED ON OCTOBER 2018 SATELLITE IMAGERY PROVIDED BY BAFFINLAND.

3. FIGURE CREATED BY KNIGHT PIESOLD LTD.

0	02JUL19	ISSUED WITH MEMO	RAC	AS/CJV	OG
REV	DATE	DESCRIPTION	DESIGNED	DRAWN	REVIEWED

BAFFINLAND IRON MINES CORPORATION

MARY RIVER PROJECT

NORTH RAILWAY

DETAILED CONSTRUCTION PHASE LAYOUT

(SHEET 20 OF 33)

KNIGHT PIESOLD CONSULTING

P/A NO.

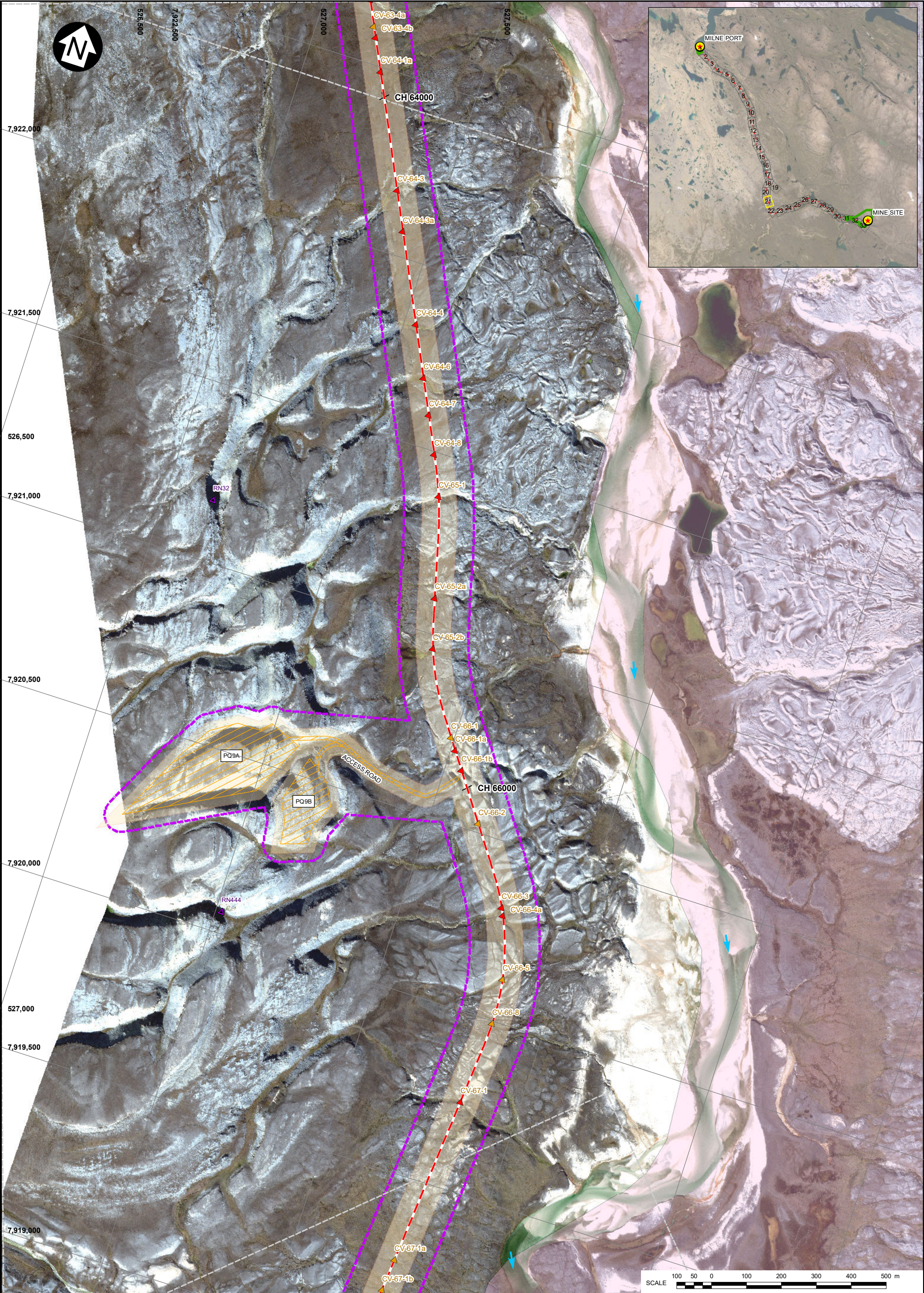
NB102-181/53

REF NO.

NB19-00516

FIGURE 23

REV 0



LEGEND:

TOTE ROAD km POST

NORTH RAIL CHANGE (m)

QUARRY AREA

LAYDOWN AREA

FISH HABITAT ASSESSMENT

FISH BEARING

POTENTIAL

NONE

MILNE INLET TOTE ROAD

TOTE ROAD REALIGNMENT

PROPOSED NORTH RAILWAY

STREAM DIVERSION

PROPOSED ACCESS ROAD

TEMPORARY HAUL ROAD

EXPLOSIVES FACILITIES

RAPTOR NEST

COMMUNICATION TOWERS

SPOILS DEPOSIT LOCATIONS

BRIDGE LOCATIONS

APPROVED WATER SOURCE

PROPOSED CONSTRUCTION WATER SOURCE

POTENTIAL DEVELOPMENT AREA (MINE, PORT)

POTENTIAL DEVELOPMENT AREA (TOTE ROAD, NORTH RAIL)

COMMERCIAL LEASE BOUNDARY

UNDISTURBED BUFFER FROM COMMERCIAL LEASE BOUNDARY

PROPOSED ADDITIONAL COMMERCIAL LEASE AREA (IOL)

PROPOSED CROWN LAND LEASE

EXISTING BORROW AREA RECLAMATION PRIORITY (FROM EBA TETRATECH 2014)

A+ VERY HIGH PRIORITY

A HIGH PRIORITY

B MODERATE PRIORITY

C LOW PRIORITY; STABLE (NOT SHOWN ON THIS FIGURE)

FLOW DIRECTION

REFERENCE SHEET EXTENT

NOTES:

1. COORDINATE GRID IS IN METRES. COORDINATE SYSTEM: NAD 1983 UTM ZONE 17N.

2. DETAILED WATER AND ORTHO IMAGERY BASED ON OCTOBER 2018 SATELLITE IMAGERY PROVIDED BY BAFFINLAND.

3. FIGURE CREATED BY KNIGHT PIESOLD LTD.

IOL SURFACE AND SUBSURFACE

IOL SURFACE ONLY

0	02JUL19	ISSUED WITH MEMO	RAC	AS/CJV	OG
REV	DATE	DESCRIPTION	DESIGNED	DRAWN	REVIEWED

100 50 0 100 200 300 400 500 m

SCALE

BAFFINLAND IRON MINES CORPORATION

MARY RIVER PROJECT

NORTH RAILWAY

DETAILED CONSTRUCTION PHASE LAYOUT

(SHEET 21 OF 33)

Knight Piésold CONSULTING

P/A NO.	REF NO.
NB102-181/53	NB19-00516
FIGURE 24	
REV	0



LEGEND:

TOTE ROAD km POST

NORTH RAIL CHANGE (m)

QUARRY AREA

LAYDOWN AREA

FISH BEARING

POTENTIAL

NONE

MILNE INLET TOTE ROAD

TOTE ROAD REALIGNMENT

PROPOSED NORTH RAILWAY

STREAM DIVERSION

PROPOSED ACCESS ROAD

TEMPORARY HAIL ROAD

EXPLOSIVES FACILITIES

RAPTOR NEST

COMMUNICATION TOWERS

SPOILS DEPOSIT LOCATIONS

BRIDGE LOCATIONS

APPROVED WATER SOURCE

PROPOSED CONSTRUCTION WATER SOURCE

POTENTIAL DEVELOPMENT AREA (MINE, PORT)

POTENTIAL DEVELOPMENT AREA (TOTE ROAD, NORTH RAIL)

COMMERCIAL LEASE BOUNDARY

UNDISTURBED BUFFER FROM COMMERCIAL LEASE BOUNDARY

PROPOSED ADDITIONAL COMMERCIAL LEASE AREA (IOL)

PROPOSED CROWN LAND LEASE

A+ VERY HIGH PRIORITY

A HIGH PRIORITY

B MODERATE PRIORITY

C LOW PRIORITY; STABLE (NOT SHOWN ON THIS FIGURE)

FLOW DIRECTION

REFERENCE SHEET EXTENT

IOL SURFACE AND SUBSURFACE

IOL SURFACE ONLY

NOTES:
1. COORDINATE GRID IS IN METRES. COORDINATE SYSTEM: NAD 1983 UTM ZONE 17N.
2. DETAILED WATER AND ORTHO IMAGERY BASED ON OCTOBER 2018 SATELLITE IMAGERY PROVIDED BY BAFFINLAND.
3. FIGURE CREATED BY KNIGHT PIESOLD LTD.

0	02JUL19	ISSUED WITH MEMO	RAC	AS/CJV	OG
REV	DATE	DESCRIPTION	DESIGNED	DRAWN	REVIEWED

BAFFINLAND IRON MINES CORPORATION

MARY RIVER PROJECT

NORTH RAILWAY

DETAILED CONSTRUCTION PHASE LAYOUT

(SHEET 22 OF 33)

P/A NO.

NB102-181/53

REF NO.

NB19-00516

Kn

Kn

ight

Pi

ésold

C

ONSULTING

FIGURE 25

REV 0



LEGEND:				EXISTING BORROW AREA RECLAMATION PRIORITY (FROM EBA TETRA TECH, 2014)			
TOTE ROAD km POST				A+ VERY HIGH PRIORITY			
TOTE ROAD REALIGNMENT				A HIGH PRIORITY			
NORTH RAIL CHANGE (m)				B MODERATE PRIORITY			
QUARRY AREA				C LOW PRIORITY; STABLE (NOT SHOWN ON THIS FIGURE)			
LAYDOWN AREA				FLOW DIRECTION			
FISH HABITAT ASSESSMENT				REFERENCE SHEET EXTENT			
FISH BEARING				IOL SURFACE AND SUBSURFACE			
POTENTIAL				IOL SURFACE ONLY			
NONE				NOTES:			
MILNE INLET TOTE ROAD				1. COORDINATE GRID IS IN METRES. COORDINATE SYSTEM: NAD 1983 UTM ZONE 17N.			
TOTE ROAD REALIGNMENT				2. DETAILED WATER AND ORTHO IMAGERY BASED ON OCTOBER 2018 SATELLITE IMAGERY PROVIDED BY BAFFINLAND.			
NORTH RAIL CHANGE (m)				3. FIGURE CREATED BY KNIGHT PIESOLD LTD.			
QUARRY AREA							
LAYDOWN AREA							
FISH HABITAT ASSESSMENT							
FISH BEARING							
POTENTIAL							
NONE							
MILNE INLET TOTE ROAD							
TOTE ROAD REALIGNMENT							
NORTH RAIL CHANGE (m)							
QUARRY AREA							
LAYDOWN AREA							
FISH HABITAT ASSESSMENT							
FISH BEARING							
POTENTIAL							
NONE							
MILNE INLET TOTE ROAD							
TOTE ROAD REALIGNMENT							
NORTH RAIL CHANGE (m)							
QUARRY AREA							
LAYDOWN AREA							
FISH HABITAT ASSESSMENT							
FISH BEARING							
POTENTIAL							
NONE							
MILNE INLET TOTE ROAD							
TOTE ROAD REALIGNMENT							
NORTH RAIL CHANGE (m)							
QUARRY AREA							
LAYDOWN AREA							
FISH HABITAT ASSESSMENT							
FISH BEARING							
POTENTIAL							
NONE							
MILNE INLET TOTE ROAD							
TOTE ROAD REALIGNMENT							
NORTH RAIL CHANGE (m)							
QUARRY AREA							
LAYDOWN AREA							
FISH HABITAT ASSESSMENT							
FISH BEARING							
POTENTIAL							
NONE							
MILNE INLET TOTE ROAD							
TOTE ROAD REALIGNMENT							
NORTH RAIL CHANGE (m)							
QUARRY AREA							
LAYDOWN AREA							
FISH HABITAT ASSESSMENT							
FISH BEARING							
POTENTIAL							
NONE							
MILNE INLET TOTE ROAD							
TOTE ROAD REALIGNMENT							
NORTH RAIL CHANGE (m)							
QUARRY AREA							
LAYDOWN AREA							
FISH HABITAT ASSESSMENT							
FISH BEARING							
POTENTIAL							
NONE							
MILNE INLET TOTE ROAD							
TOTE ROAD REALIGNMENT							
NORTH RAIL CHANGE (m)							
QUARRY AREA							
LAYDOWN AREA							
FISH HABITAT ASSESSMENT							
FISH BEARING							
POTENTIAL							
NONE							
MILNE INLET TOTE ROAD							
TOTE ROAD REALIGNMENT							
NORTH RAIL CHANGE (m)							
QUARRY AREA							
LAYDOWN AREA							
FISH HABITAT ASSESSMENT							
FISH BEARING							
POTENTIAL							
NONE							
MILNE INLET TOTE ROAD							
TOTE ROAD REALIGNMENT							
NORTH RAIL CHANGE (m)							
QUARRY AREA							
LAYDOWN AREA							
FISH HABITAT ASSESSMENT							
FISH BEARING							
POTENTIAL							
NONE							
MILNE INLET TOTE ROAD							
TOTE ROAD REALIGNMENT							
NORTH RAIL CHANGE (m)							
QUARRY AREA							
LAYDOWN AREA							
FISH HABITAT ASSESSMENT							
FISH BEARING							
POTENTIAL							
NONE							
MILNE INLET TOTE ROAD							
TOTE ROAD REALIGNMENT							
NORTH RAIL CHANGE (m)							
QUARRY AREA							
LAYDOWN AREA							
FISH HABITAT ASSESSMENT							
FISH BEARING							
POTENTIAL							
NONE							
MILNE INLET TOTE ROAD							
TOTE ROAD REALIGNMENT							
NORTH RAIL CHANGE (m)							
QUARRY AREA							
LAYDOWN AREA							
FISH HABITAT ASSESSMENT							
FISH BEARING							
POTENTIAL							
NONE							
MILNE INLET TOTE ROAD							
TOTE ROAD REALIGNMENT							
NORTH RAIL CHANGE (m)							
QUARRY AREA							
LAYDOWN AREA							
FISH HABITAT ASSESSMENT							
FISH BEARING							
POTENTIAL							