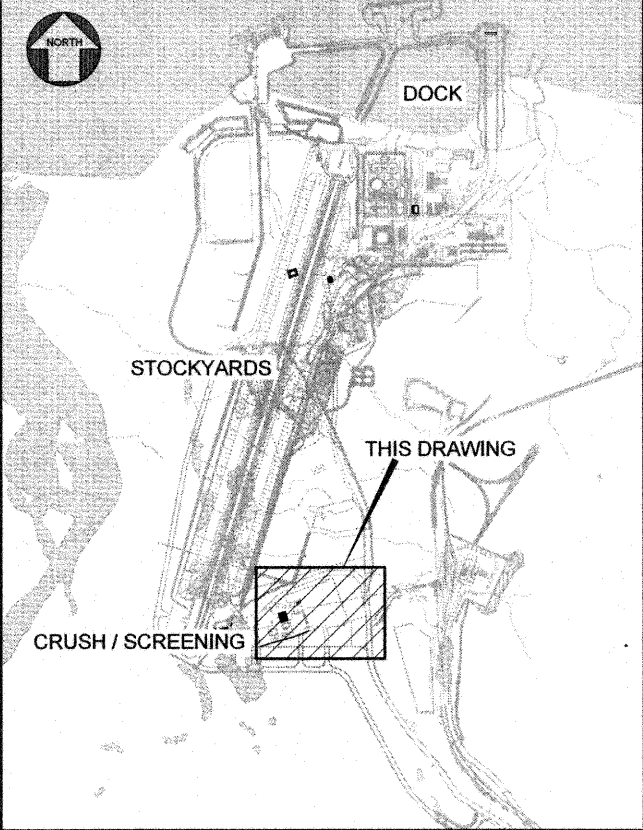


NOTES:

1. LIDAR SURVEY PROVIDED BY PHOTOSAT (2016)
2. CO-ORDINATE GRID IS SHOWN IN UTM (NAD83) ZONE 17 AND IS IN METERS.
3. CONTOURS ARE IN METERS. CONTOUR INTERVAL IS 0.5m.
4. ALL DIMENSIONS SHOWN ARE IN METERS, UNLESS NOTED OTHERWISE.

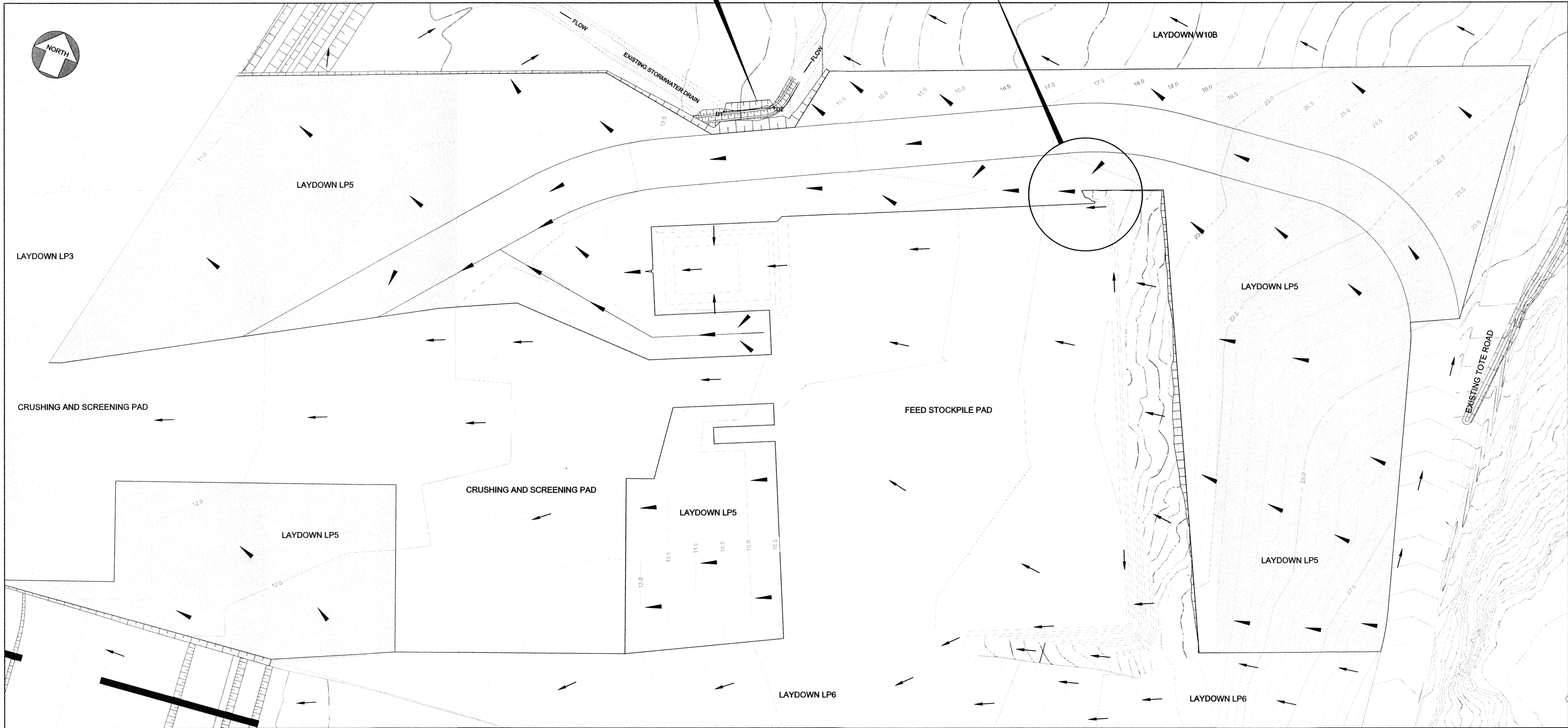
LEGEND:

- 26.5 — CONTOUR
- OFF PAD FLOW DIRECTION
- ▲ ON PAD FLOW DIRECTION



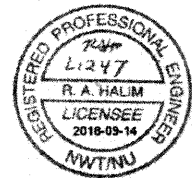
KEY PLAN

TOE OF DRAIN CHAMFER SETTING OUT DATA
D1 E +503 345.334
N +7 974 969.561
D2 E +505 359.910
N +7 974 974.936
INVERT LEVEL TO MATCH EXISTING. BATTER
SLOPES TO BE CUT AT 1:1.5



PERMIT TO PRACTICE
HATCH LTD.
Signature: _____
Date: 2018-09-14
PERMIT NUMBER: P 512
The Association of Professional Engineers,
Geologists and Geophysicists of NWT/NU

REFERENCE DRAWINGS	DRAWING TITLE
H353004-40000-221-271-0009-0001	LAYDOWN AREA LP6 - LAYOUT AND PROFILES
DRAWING No.	



REG. PROFESSIONAL

FOR CONSTRUCTION

No.	DESCRIPTION	REVISIONS
1	EDC STAMP REMOVED	
0	FOR CONSTRUCTION	

HATCH

DRAFTSPERSON	I BARNARD	NR	16/04/2018
DESIGNER	F HUGO	NR	16/04/2018
CHECKER	H HERBST		2018-09-14
DESIGN COORD.	R GOOSEN		2018-09-13
RESP. ENG.	R HALIM		2018-09-14
LEAD DISC. ENG.	A GROBBELAAR		2018-09-13
AREA LEAD	V LAVRIC		2018-07-17
ENG. MANAGER	D STANGER		2018-07-17
AREA MANAGER	T ATIBA		
ROLE	NAME	SIGNATURE	DATE
			18-09-19

DRAWING APPROVAL STATUS: Approved for Construction

Baffinland
BAFFINLAND IRON MINES LP
MARY RIVER EXPANSION PROJECT

PORT SITE
LAYDOWN AREA LP5
DRAINAGE PLAN

SCALE 1:500
DWG. No. H353004-40000-228-272-0017-0001
REV 1

SHEET SIZE: E