

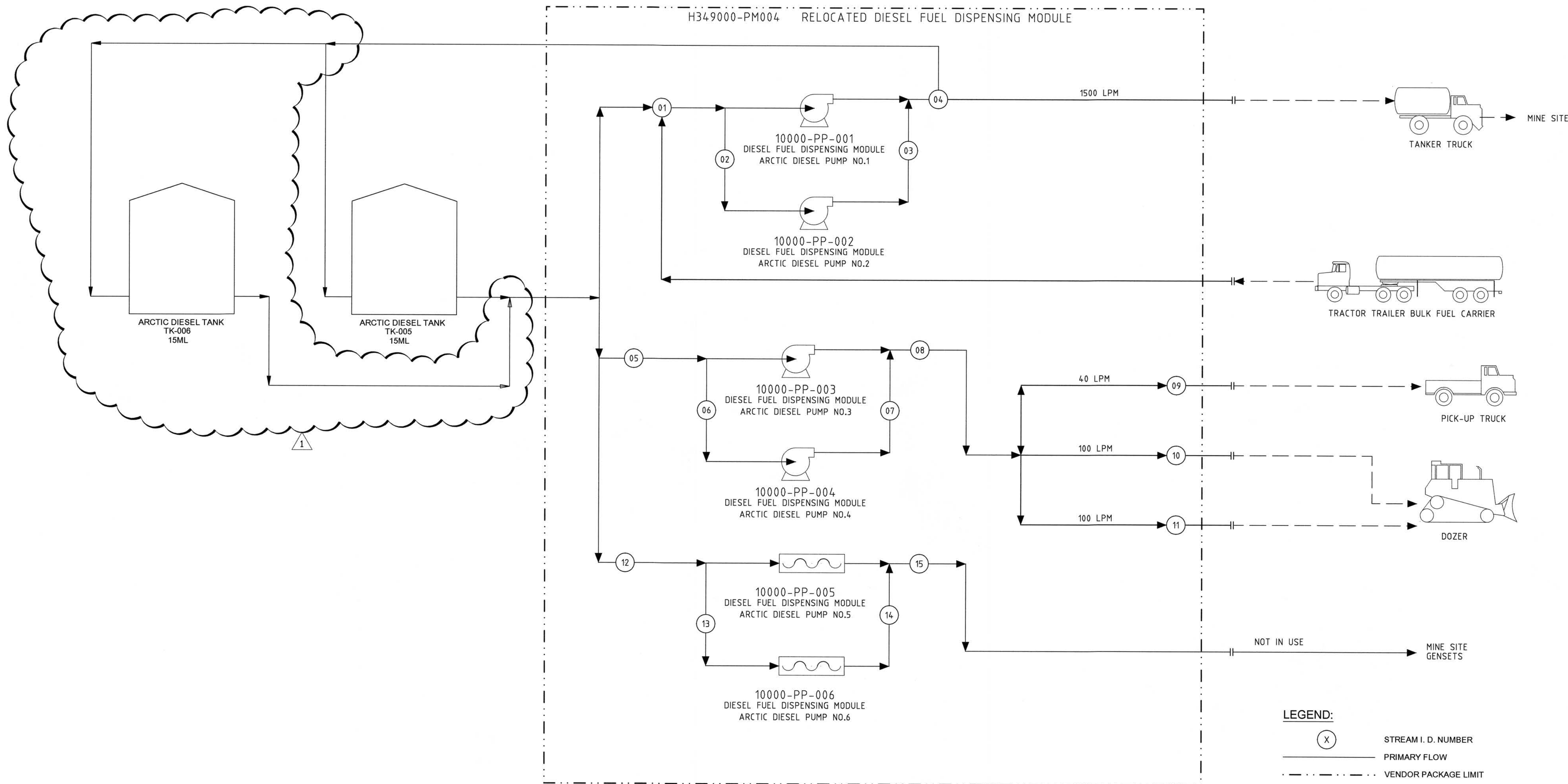
ATTACHMENT 17

Mine Site Fuel Tank Farm

(18 Pages)

NOTES

1. TANKS ARE FILLED ONE AT A TIME
2. TANKS ARE DRAWN DOWN ONE AT A TIME
3. TANKS FILLED TO 95% OF NOMINAL CAPACITY



STREAM NUMBER	UNIT	1	2	3	4	5	6	7	8	9	10	11	12	13	14	15	16
DESIGN FLOW	L/min	1,500	1,500	1,500	1,500	1,500	1,500	-	-	40	100	100	1500	1500	-	-	-
MAX FLOW	ML/YR	-	-	-	-	-	-	-	-	-	-	-	-	-	-	-	-
DESIGN TEMPERATURE(MAX)	°C	20	20	20	20	20	20	20	20	20	20	20	20	20	20	20	20
DESIGN TEMPERATURE(MIN)	°C	-54	-54	-54	-54	-54	-54	-54	-54	-54	-54	-54	-54	-54	-54	-54	-54

H353004-00000-210-276-0001-0001	MINE SITE ADDITIONAL TANK FARM STORAGE P & ID
H353004-00000-270-276-0001-0001	PROJECT LEGEND SHEET
DRAWING No.	DRAWING TITLE
REFERENCE DRAWINGS	

REG. PROFESSIONAL

1	ADDITIONAL STORAGE TANK TK-006 ADDED	3/1/11	MMI	18-07-25
0	ISSUED FOR CONSTRUCTION			
No.	DESCRIPTION	BY	CHK'D	DATE
REVISIONS				

DRAFTSPERSON	H. P. CURRIE	NR	18-07-11
DESIGNER	J. MacLEAN	NR	18-07-10
CHECKER	M. MacINTYRE	Michael MacIntyre	19/02/01
DESIGN COORD.	M. MacINTYRE	Michael MacIntyre	19/02/01
RESP. ENG.	F. BUTTS	F. Butts	19/02/01
LEAD DISC. ENG.	J. MacLEAN	James MacLean	19/02/01
ENG. MANAGER	G. PEACE	G. Peace	19/02/01
AREA MANAGER	H. VENTER	H. Venter	19/02/01
CLIENT	T. ATIBA	T. Atiba	19/02/01
ROLE	NAME	SIGNATURE	DATE

SCALE	NTS	DWG. No.	H353004-10000-210-282-0001-0001	REV	1
OR AS NOTED					

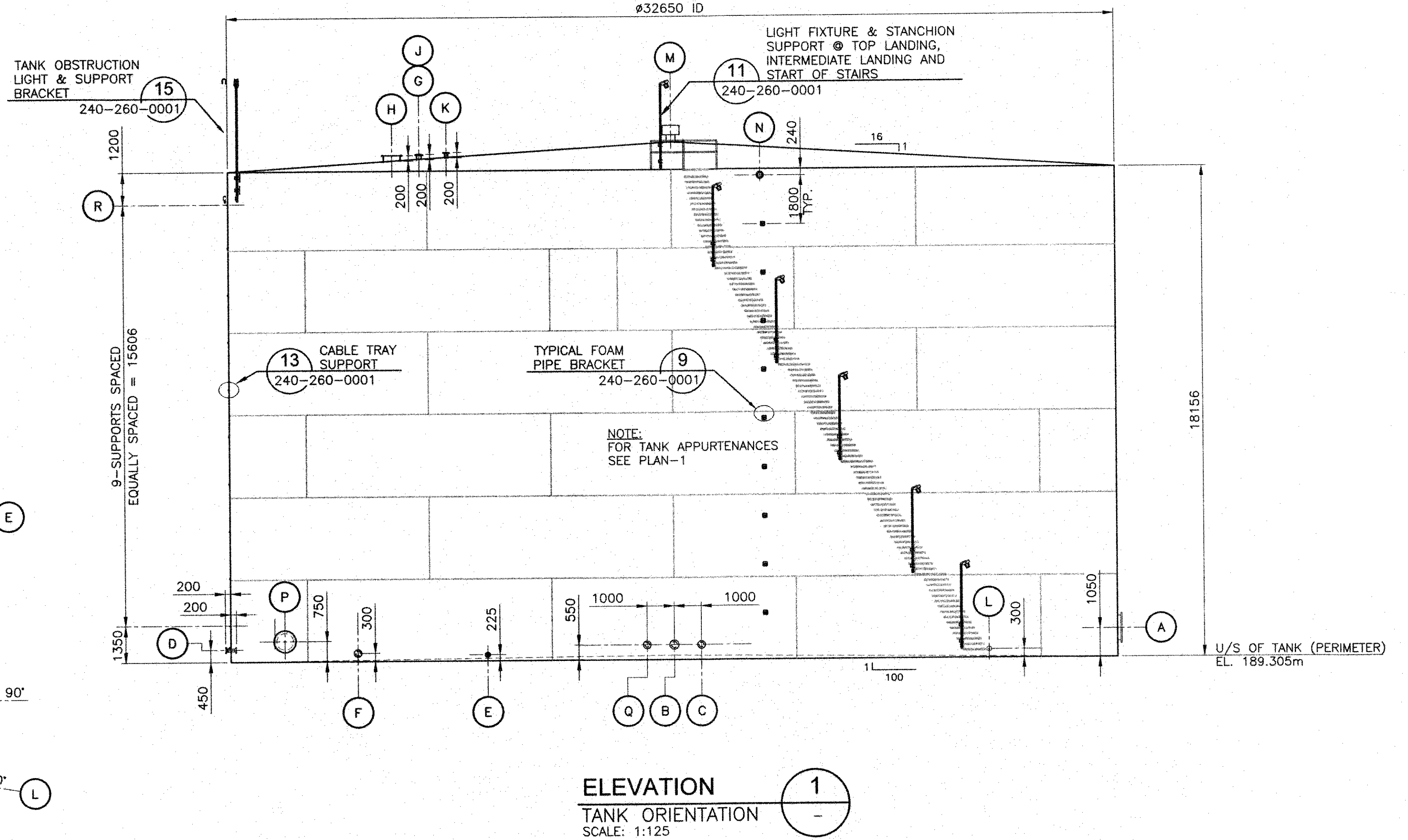
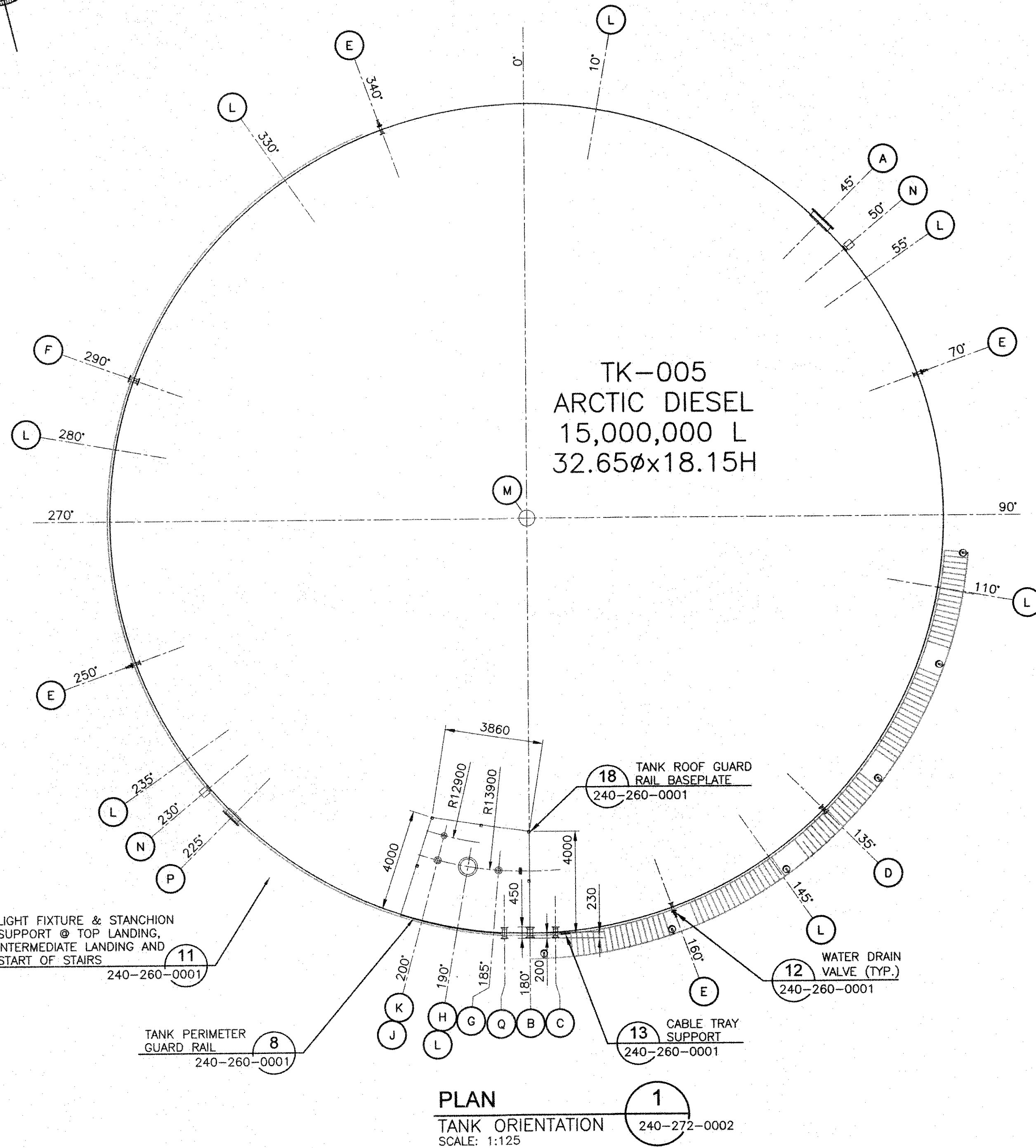
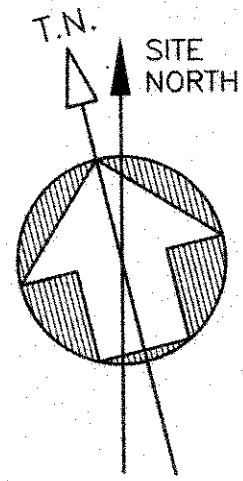
PERMIT TO PRACTICE
HATCH LTD.
Signature: [Signature]
Date: 19/02/01
PERMIT NUMBER: P 512
The Association of Professional Engineers,
Geologists and Geophysicists of NW/TNU

HATCH

Baffinland

MARY RIVER PROJECT
BAFFINLAND IRON MINES LP

MINE SITE
FUEL SYSTEM
PROCESS FLOW DIAGRAM



TANK APPURTENANCES						
ITEM NO.	SERVICE	SIZE	RATING	TYPE	REMARKS	REFERENCE DETAIL
A 1	SHELL MANWAY	915 (36")	API 650	FF	API 650 FIG. 5-7A	DET. 1, DWG: 240-260-0001
B 1	TANK SUNCTION	203 (8")	CLASS 150	RF WELD NECK	DOUBLE FLANGED /W 25mm SW HALF COUPLING ON EXTERIOR NOZZLE	N/A
C 1	TANK FILL	150 (6")	CLASS 150	RF WELD NECK	DOUBLE FLANGED /W 25mm SW HALF COUPLING ON EXTERIOR NOZZLE	N/A
D 1	SPARE SHELL NOZZLE	100 (4")	CLASS 150	RF WELD NECK	DOUBLE FLANGED	N/A
E 4	WATER DRAIN NOZZLE	75 (3")	CLASS 150	RF WELD NECK	FLANGED	DET. 12, DWG: 240-260-0001
F 1	SPARE SHELL NOZZLE	150 (6")	CLASS 150	RF WELD NECK	FLANGED w/ BLIND FLANGE	N/A
G 1	GAUGE HATCH	150 (6")	CLASS 150	RF SLIP ON	FLANGED	DET. 3, DWG: 240-260-0001
H 1	ROOF MANWAY c/w EMERGENCY VENT	610 (24")	API 650	FF	C/W COVER	DET. 5, DWG: 240-260-0001
J 1	RADAR GAUGE	150 (6")	CLASS 150	RF SLIP ON	SINGLE FLANGE	DET. 2, DWG: 240-260-0001
K 1	ROOF NOZZLE (OVERFILL PROBE)	100 (4")	CLASS 150	RF SLIP ON	BLIND FLANGED	DET. 4, DWG: 240-260-0001
L 8	GROUNDING LUGS					DET. 7, DWG: 240-260-0001
M 1	ROOF VENT	305# (12")		NOZZLE		DET. 8, DWG: 240-260-0001
N 2	FOAM CONNECTION NOZZLE	150 (6")		STUD PAD	STUD PAD	DET. 10, DWG: 240-260-0001
P 1	SHELL MANWAY	610 (24")	API 650	FF	API 650 FIG. 5-7A	DET. 1, DWG: 240-260-0001
Q 1	TANK DRAW DOWN	150 (6")	CLASS 150	RF	DOUBLE FLANGED	DET. 14, DWG: 240-260-0001
R 10	CABLE TRAY SUPPORT					DET. 13, DWG: 240-260-0001

PERMIT TO PRACTICE
HATCH LTD.
Signature: *[Signature]*
Date: 11/07/25
PERMIT NUMBER: P 512
The Association of Professional Engineers, Geologists and Geophysicists of NWT/NU

ISSUED FOR CONSTRUCTION

THIS DRAWING WAS PREPARED BY HATCH LTD. (HATCH) FOR THE EXCLUSIVE USE OF BAFFINLAND IRON MINES LP (CLIENT) AND ITS USE IS SUBJECT TO THE TERMS AND CONDITIONS OF THE CONTRACT BETWEEN HATCH AND THE CLIENT, INCLUDING ANY LIMITATIONS ON LIABILITY CONTAINED THEREIN. THIS DRAWING AND ITS CONTENTS REMAIN THE INTELLECTUAL PROPERTY OF HATCH SUBJECT TO CLIENTS ROYALTY-FREE, IRREVOCABLE, PERPETUAL AND NON-EXCLUSIVE LICENSE TO USE AND REPRODUCE THE DRAWING FOR PURPOSES CONNECTED WITH THE PROJECT, INCLUDING THE CONSTRUCTION, COMPLETION, MAINTENANCE, EXTENSION, RENOVATION AND REPAIR OF THE PROJECT. THIS DRAWING AND THE INFORMATION CONTAINED HEREIN, SHALL BE TREATED AS CONFIDENTIAL FOR ALL OTHER PURPOSES AND SHALL NOT BE MODIFIED WITHOUT THE WRITTEN CONSENT OF HATCH.

HATCH

Baffinland

MARY RIVER EXPANSION PROJECT
BAFFINLAND IRON MINES LP

MINE SITE
FUEL SYSTEM
15,000,000L ARCTIC DIESEL TANK

0 ISSUED FOR CONSTRUCTION
A ISSUED FOR PARALLEL REVIEW

DESCRIPTION

REVISIONS

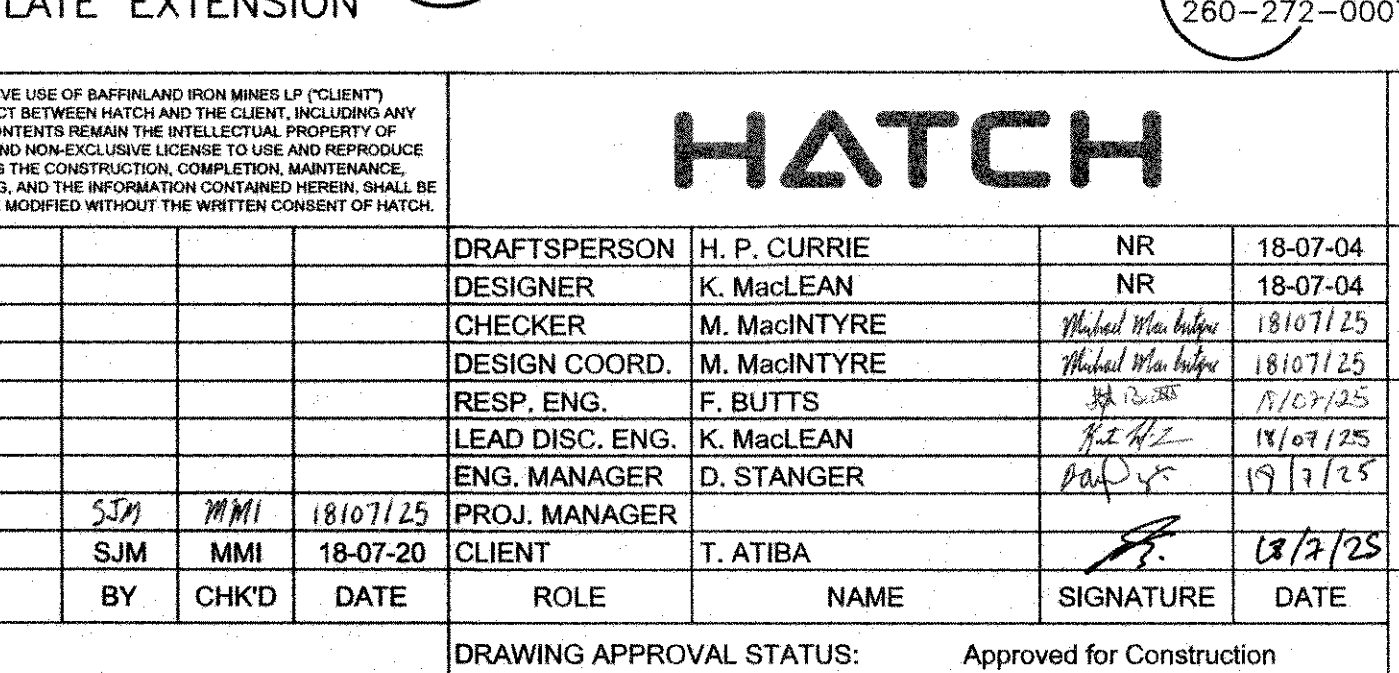
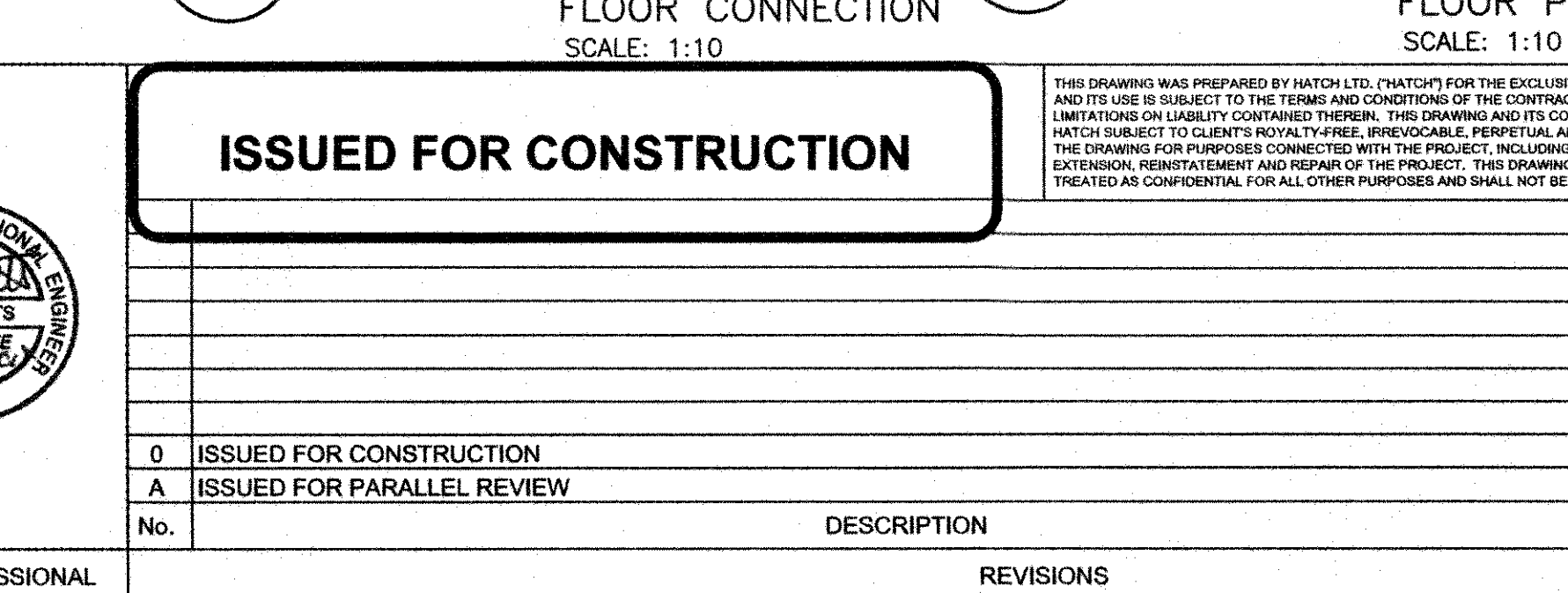
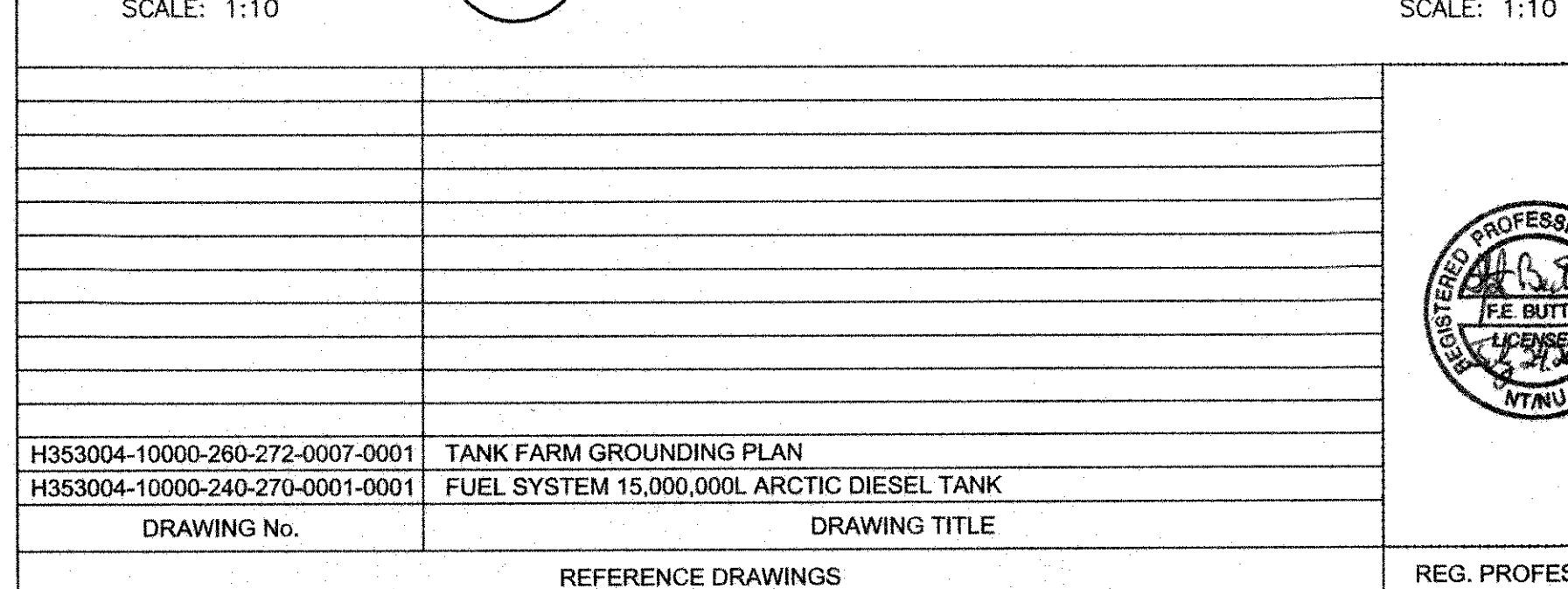
DRAFTSPERSON	H. P. CURRIE	NR	18-07-04
DESIGNER	K. MacLEAN	NR	18-07-04
CHECKER	M. MacINTYRE	<i>Michael MacIntyre</i>	18/07/25
DESIGN COORD.	M. MacINTYRE	<i>Michael MacIntyre</i>	18/07/25
RESP. ENG.	F. BUTTS	<i>F. Butts</i>	11/07/25
LEAD DISC. ENG.	K. MacLEAN	<i>K. MacLean</i>	11/07/25
ENG. MANAGER	D. STANGER	<i>D. Stanger</i>	11/07/25
PROJ. MANAGER	T. ATIBA	<i>T. Atiba</i>	11/07/25
CLIENT			

DRAWING APPROVAL STATUS: Approved for Construction

SCALE
AS NOTED
OR AS NOTED

DWG. No.
H353004-10000-240-270-0001-0001
REV
0

SHEET SIZE: A1



SCALE	DWG. No.	R
AS NOTED	H353004-10000-240-260-0001-0001	
OR AS NOTED		

E: A1