

A-5
OF 7

Drawing Title:	CROSS SECTION	
	Date:	JUN 2018
Drawn By:	NH	Scale: AS NOTED

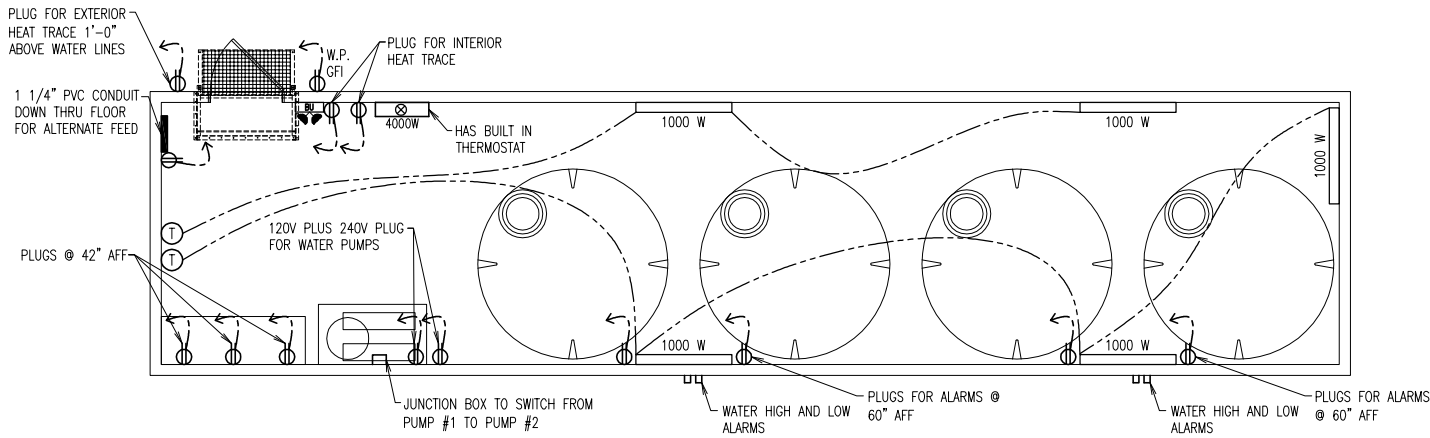
Project Title:	50' x 12'
	HORIZON NORTH
	SERIAL #: AL18-1348 & AL18-1349

ALANTRA
Excellence in Quality and Service

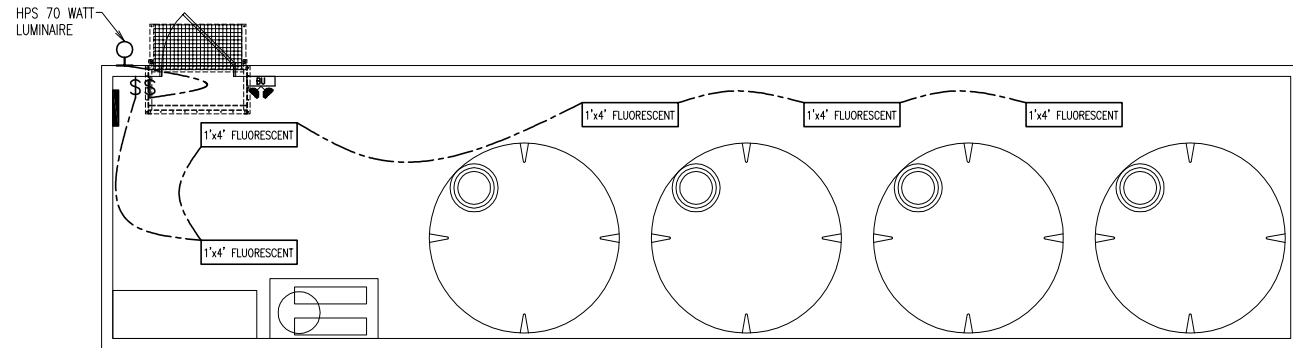
P.O. Box 4375
119 Coogle Road
Sussex, N.B. E4E 5L5

Tel: (506) 433-3757
Fax: (506) 432-9076

0	FOR APPROVAL	JUN 2018
REV.	DESCRIPTION	DATE



POWER & HEAT LAYOUT
SCALE: 1/8" = 1'-0"



LIGHTING LAYOUT
SCALE: 1/8" = 1'-0"

LEGEND	
LIGHTING	
	FLOURESCENT LUMINAIRE.
	FIXTURE MOUNTING. CEILING MOUNTED, SURFACE.
	EXTERIOR HPS 70W LUMINAIRE. WALL, SURFACE MOUNTED.
	SINGLE POLE SWITCH, (TOGGLE TYPE) WALL, FLUSH MOUNTED, 120VAC-15 A MOUNTED AT 48" AFF
GENERAL	
	NMB 14/2 WIRING FOR LIGHTS AND RECEPTACLES
	NMB 12/2 WIRING FOR 20 AMP RECEPTACLES
	NMB 12/2 WIRING FOR HEAT NMB CABLES ARE ALLOWED IN 90°F AMBIENT TEMP. THE CURRENT CARRYING CAPACITY IS FROM NEC 60°F TABLE FOR BEING EMBEDDED IN THERMAL INSULATION
	GFCI
	AFF GROUND FAULT INTERRUPTER TYPE. ABOVE FINISHED FLOOR.
	34" MOUNTING HEIGHT OF ITEM CENTER LINE AFF. 16" U/N 54" FOR A/C UNITS 50" AT DRAWING TABLE 50" AT 33" HIGH COUNTERTOP 44" AT KITCHEN COUNTER 80" EXIT/EMERG LIGHT
POWER	
	DUPLEX RECEPTACLE, WALL, FLUSH MOUNTED. 120VAC-15A.
	DUPLEX RECEPTACLE, WALL, FLUSH MOUNTED. 120VAC-20A.
	TELCO 2 TELEPHONE/DATA 2 PORT OUTLET.
	1000 BASEBOARD HEATER, WALL, SURFACE MOUNTED 6" AFF.. 1000 DENOTES WATTAGE.
	ⓘ THERMOSTAT, ELECTRIC, WALL MOUNTED 48" AFF
	STANDARD WALL HEATER, WALL, SURFACE MOUNTED STANDARD DENOTES WATTAGE.

Drawing Title:
ELECTRICAL
LAYOUT

Date:
JUN 2018

Drawn By:
NH

Scale:
AS NOTED

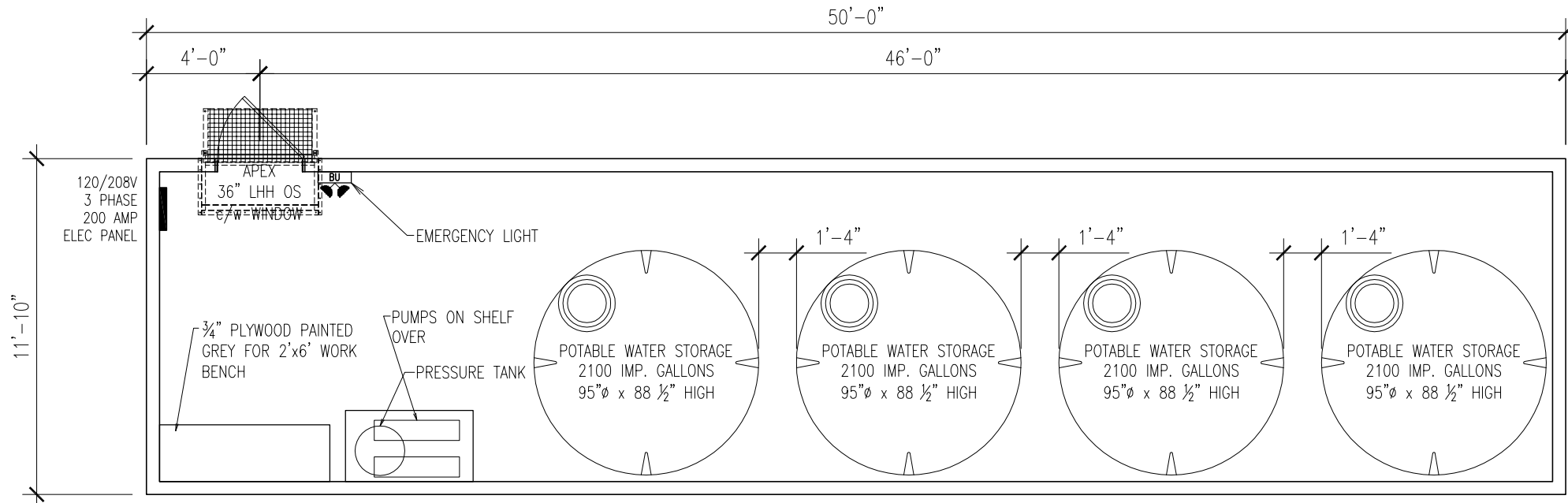
Project Title:
50' x 12'
HORIZON NORTH
SERIAL #: AL18-1348 & AL18-1349

ALANTRA
Excellence in Quality and Service

P.O. Box 4375
119 Coogle Road
Sussex, N.B. E4E 5L5

Tel: (506) 433-3757
Fax: (506) 432-9076

0	FOR APPROVAL	JUN 2018
REV.	DESCRIPTION	DATE



FLOOR PLAN

SCALE: 1/8" = 1'-0"

- 2-2x6 HEADER TYPICAL AT DOORS
- RSO OF ALL EXTERIOR DOORS (FROM APEX) 37 7/8"x82 11/16" U/N. DOORS C/W PANIC HARDWARE AND DOOR CLOSURE
- 6'-6" LONG EAVES TROUGH OVER EACH EXTERIOR DOOR
- SOLD UNT INSTALL "MANUFACTURED BY ALANTRA LEASING" DECAL
- INSTALL INTERIOR SHEATHING AT 1/4" ABOVE FLOOR AND SILICONE ALONG BOTTOM
- INSTALL PVC TRIM BLOCKS UNDER INTERIOR CASINGS AND CORNER TRIM
- INSTALL METAL ROOF ANCHORS IN SHOP

0	FOR APPROVAL	JUN 2018
REV.	DESCRIPTION	DATE

A-1
OF 7

Drawing Title:
FLOOR
PLAN

Date:
JUN 2018

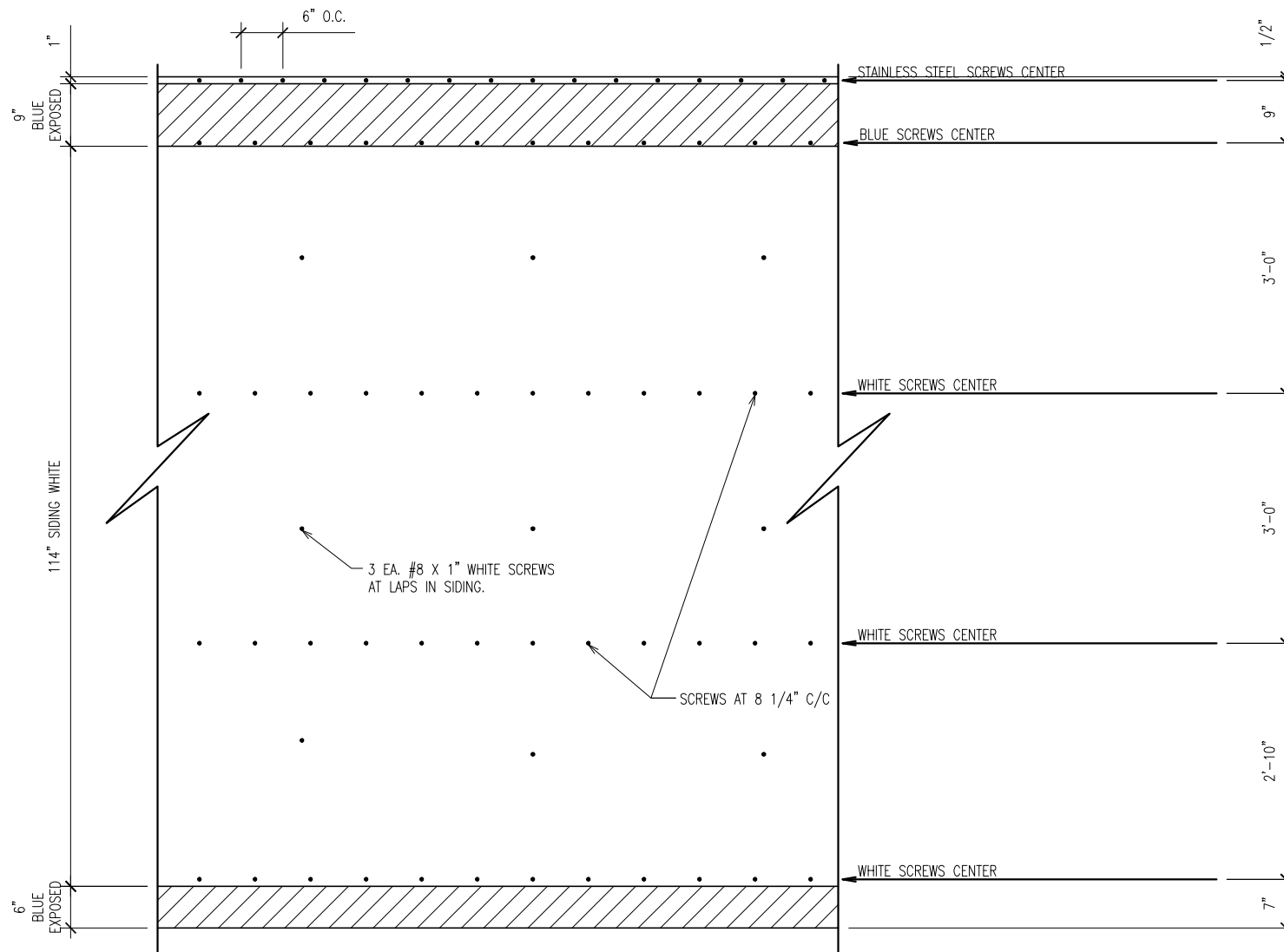
Drawn By:
NH
Scale:
AS NOTED

Project Title:

50' x 12'
HORIZON NORTH
SERIAL #: AL18-1349

ALANTRA
Excellence in Quality and Service

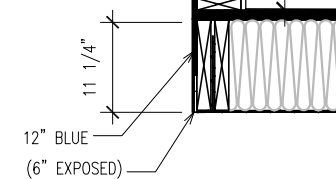
P.O. Box 4375
119 Coughle Road
Sussex, N.B. E4E 5L5
Tel: (506) 433-3757
Fax: (506) 432-9076



SIDING ELEVATION & SECTION SCALE: 1/2" = 1'-0"

- INSTALL SIDING SO THAT LAPS IN SIDING FACE TOWARDS THE REAR OF THE TRAILER

PROVIDE COLORS



0	FOR APPROVAL	JUN 2018
REV.	DESCRIPTION	DATE

ALANTRA
Excellence in Quality and Service

P.O. Box 4375
119 Congle Road
Sussex, N.B. E4E 5L5
Tel: (506) 433-3757
Fax: (506) 432-9076

Project Title:
50' x 12'
HORIZON NORTH
SERIAL #: AL18-1348 & AL18-1349

Drawing Title:
**SIDING
PLAN**

Date:
JUN 2018

Drawn By:
NH
Scale:
AS NOTED

A-7

OF 7