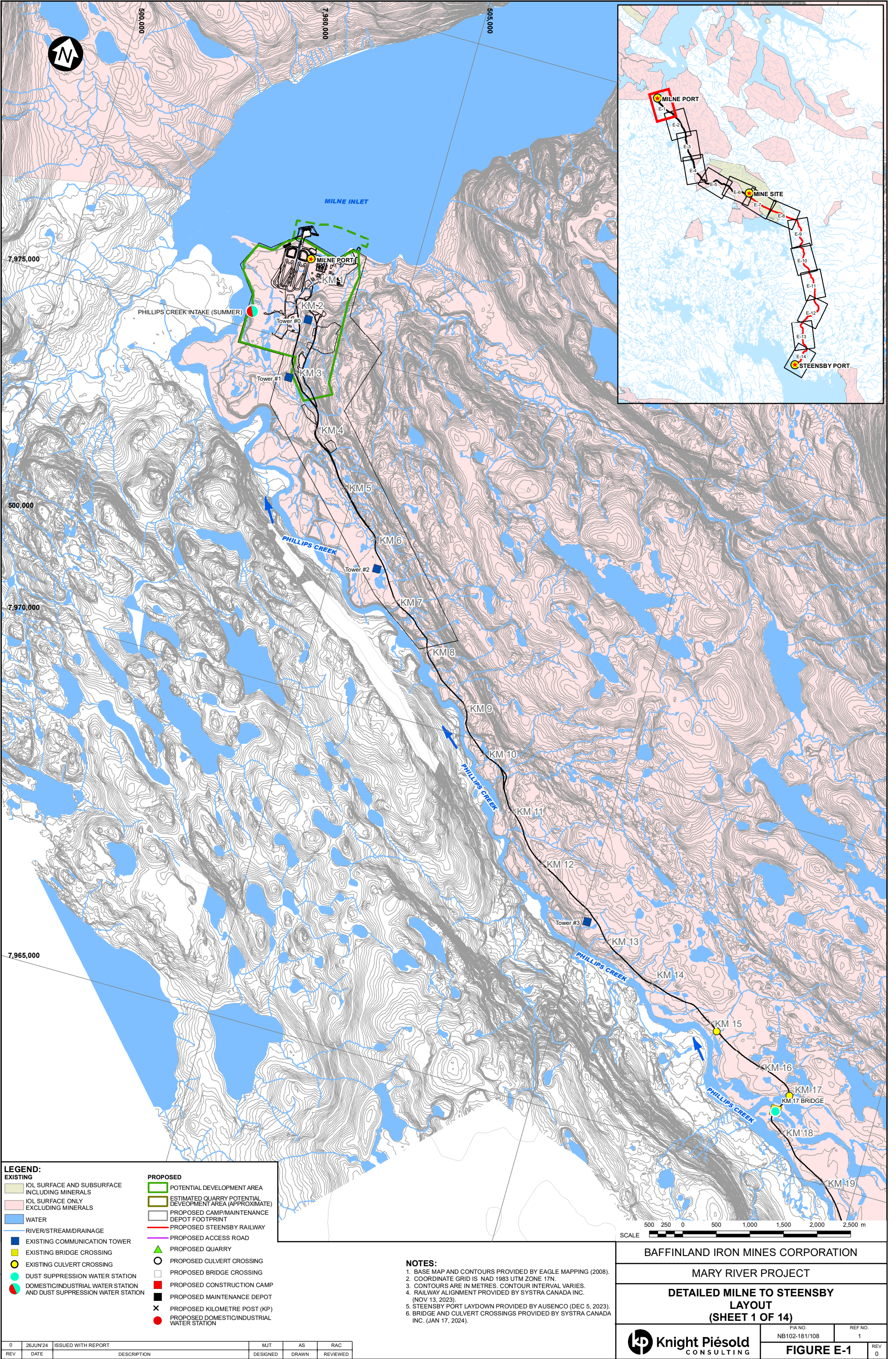
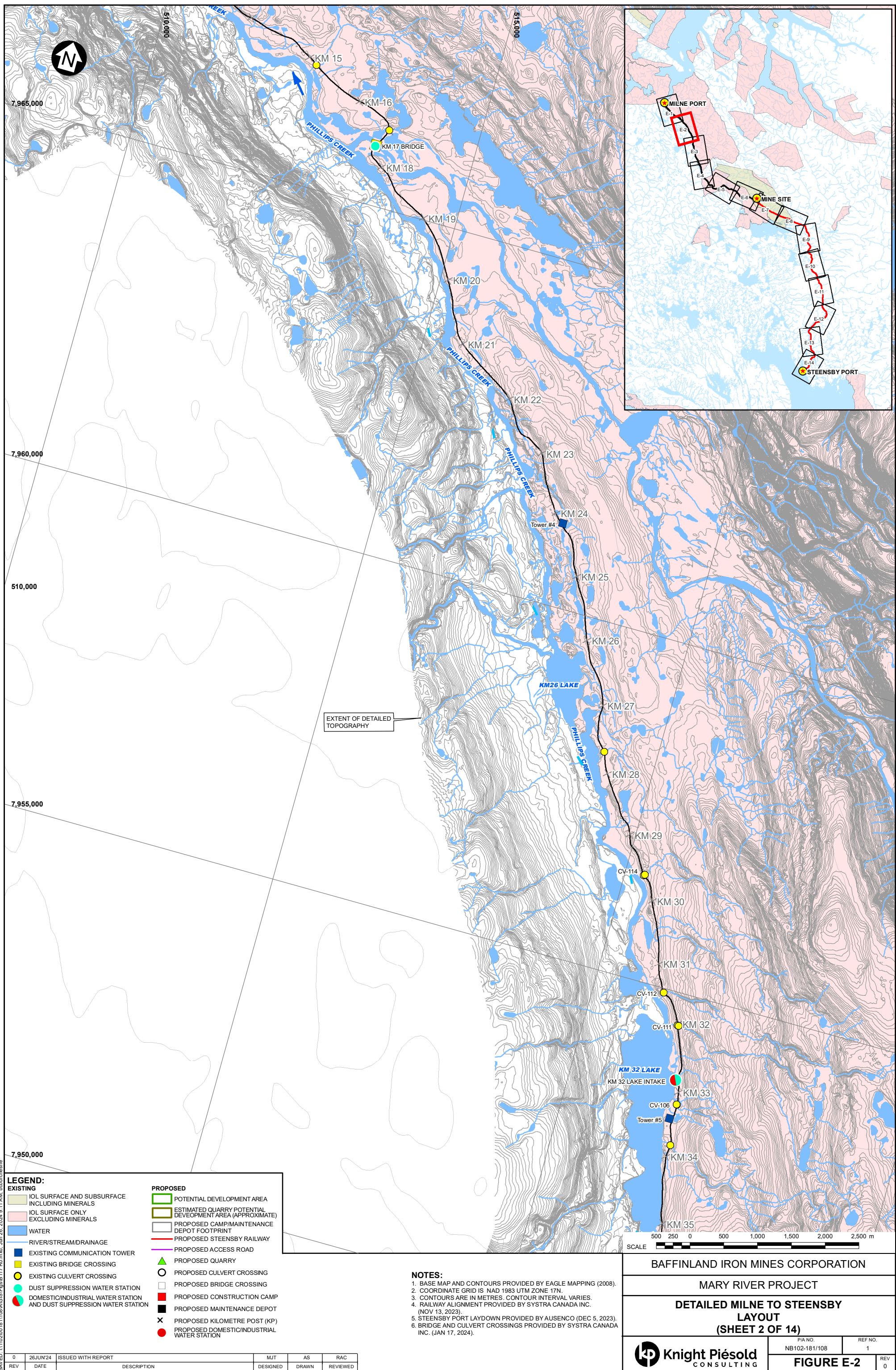


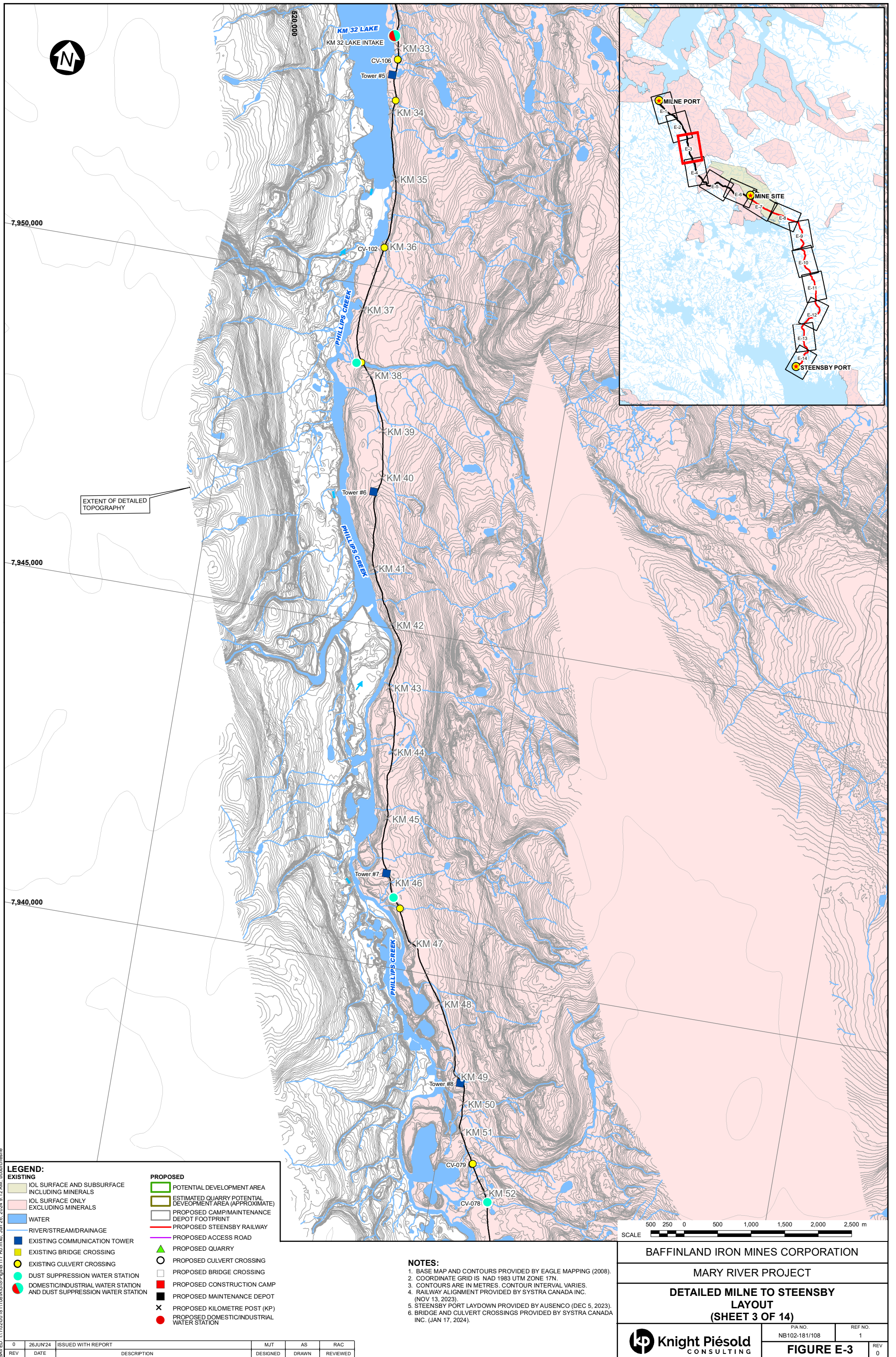
APPENDIX E

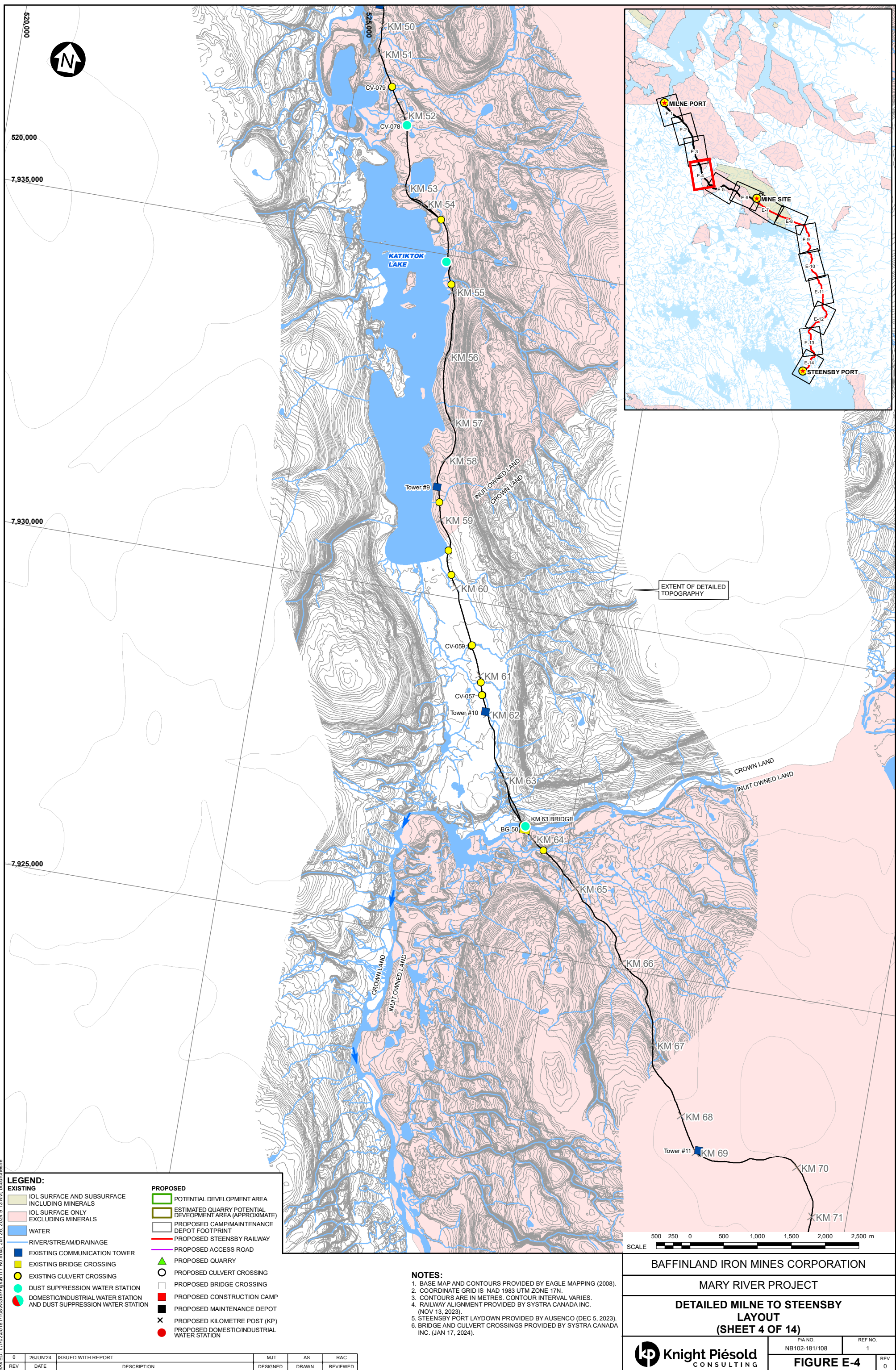
1:50,000 Scale Figures Showing Existing and Proposed Infrastructure

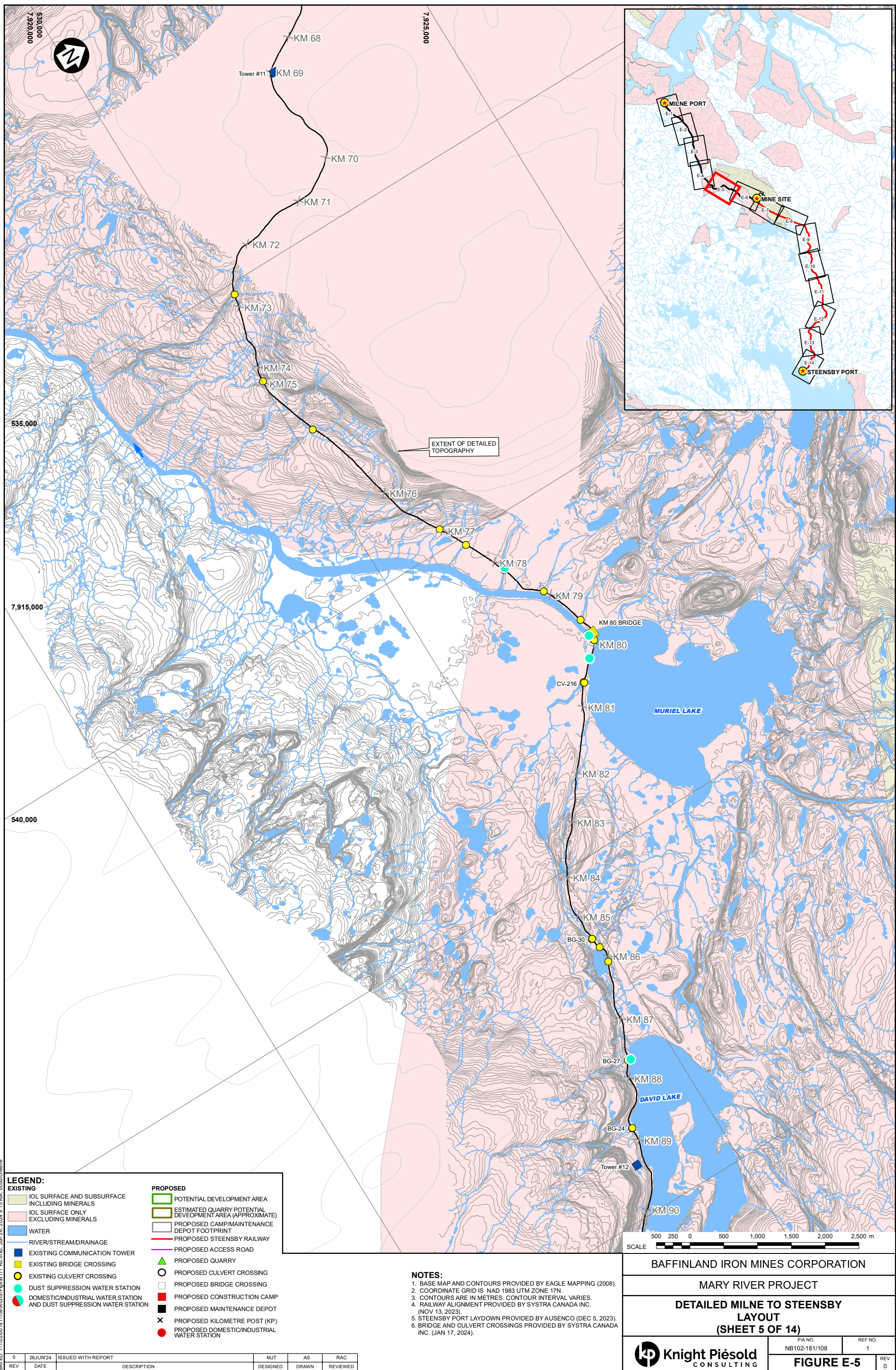
(Pages E-1 to E-14)

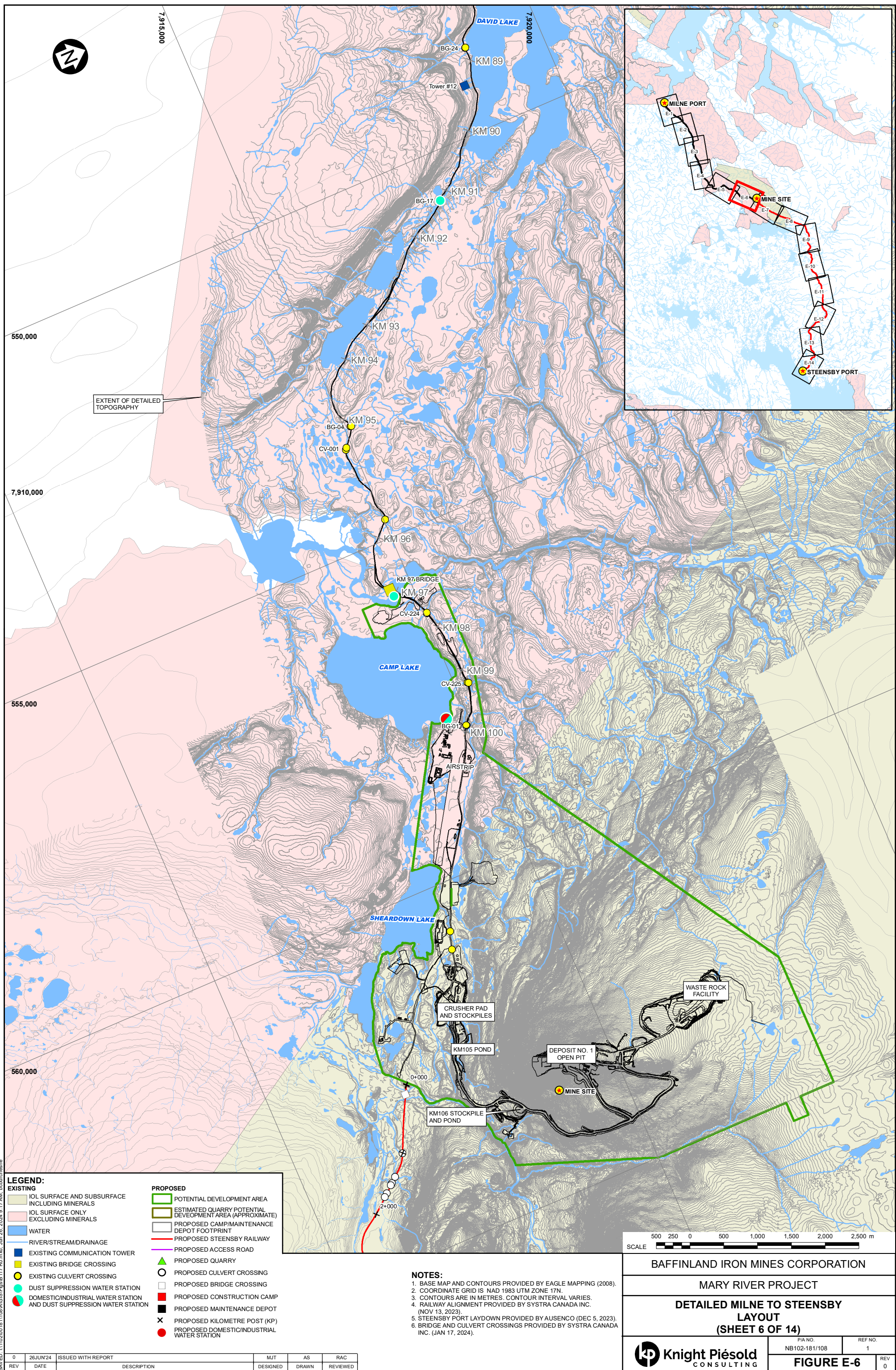


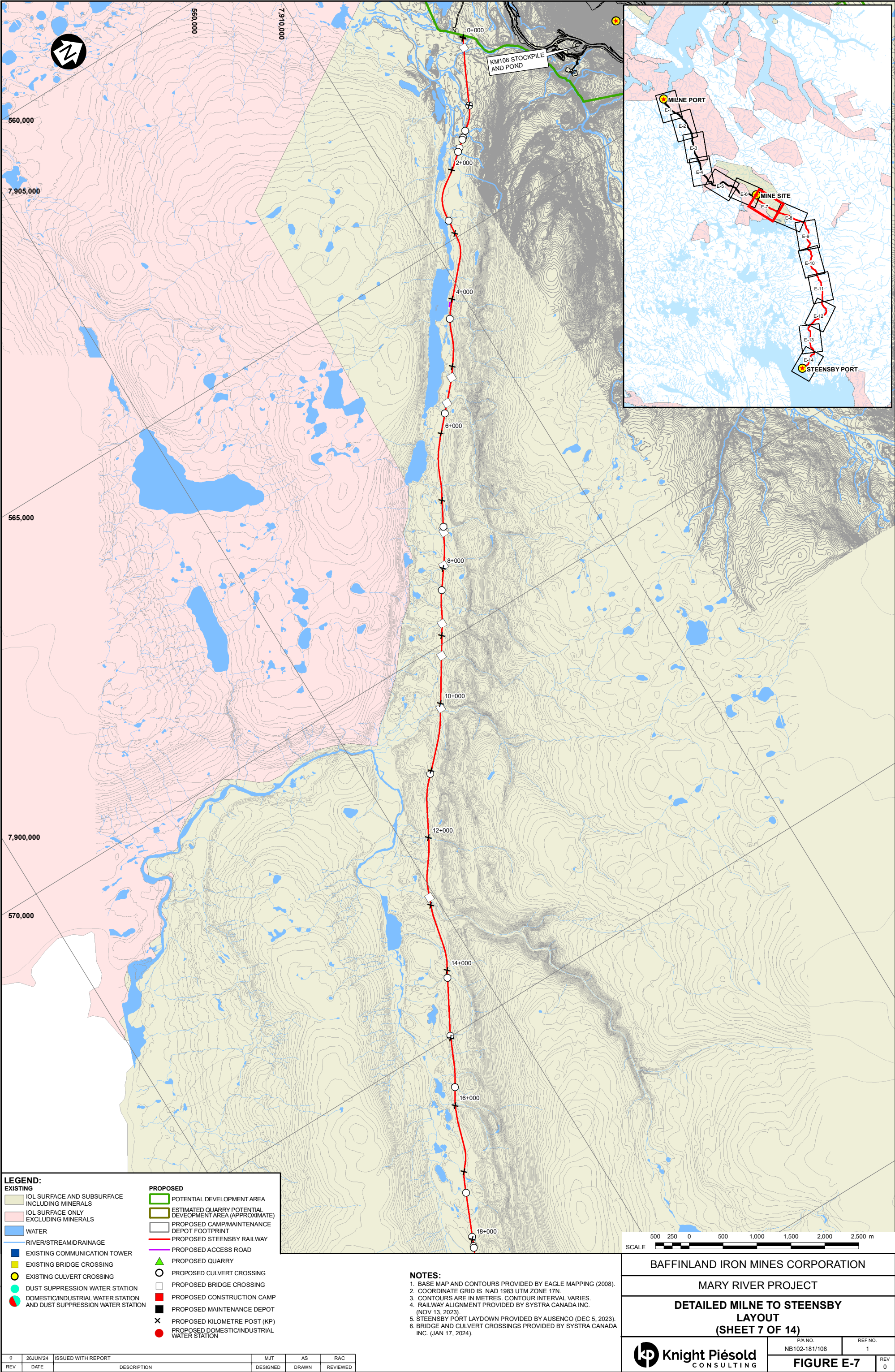




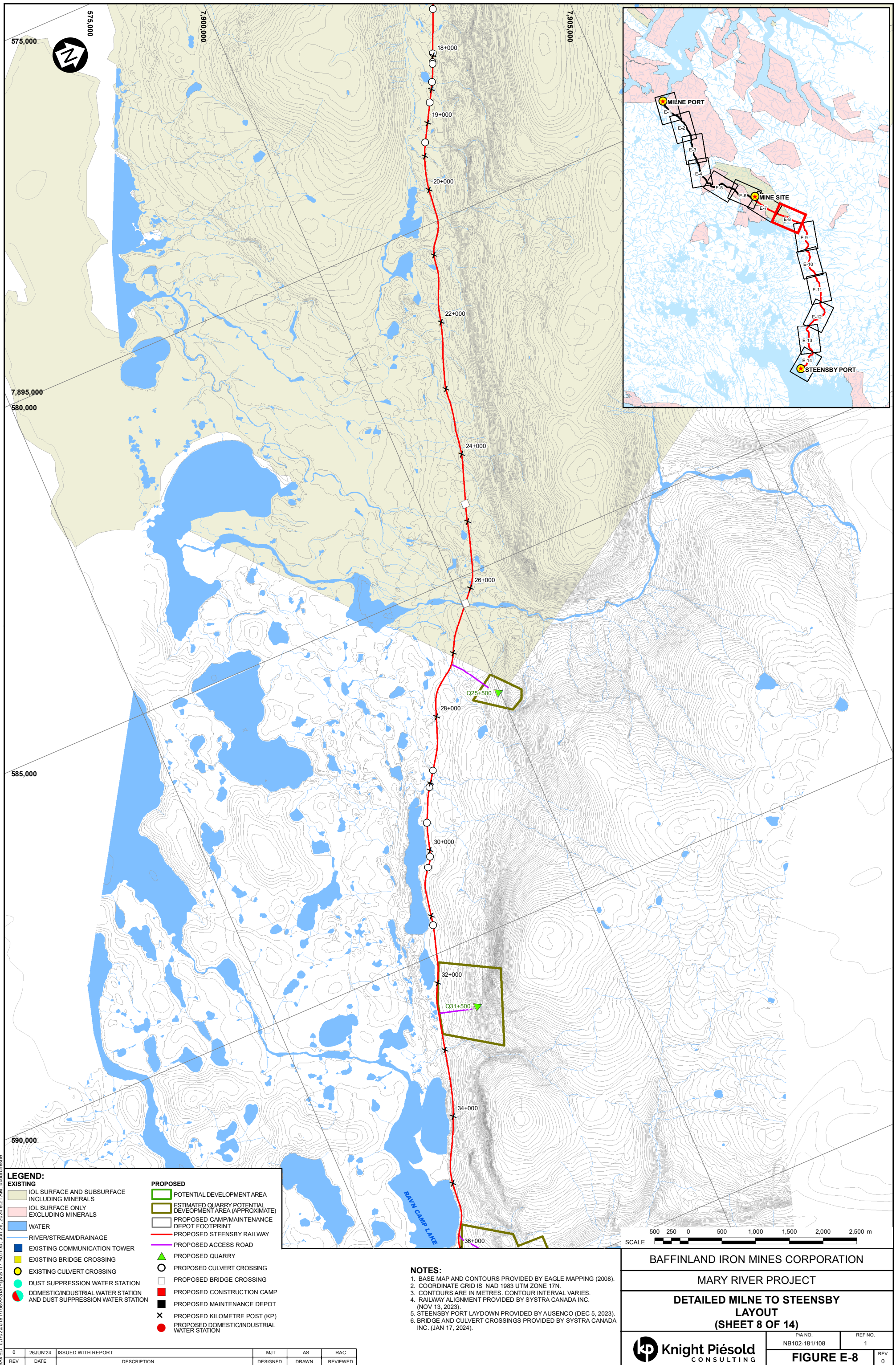


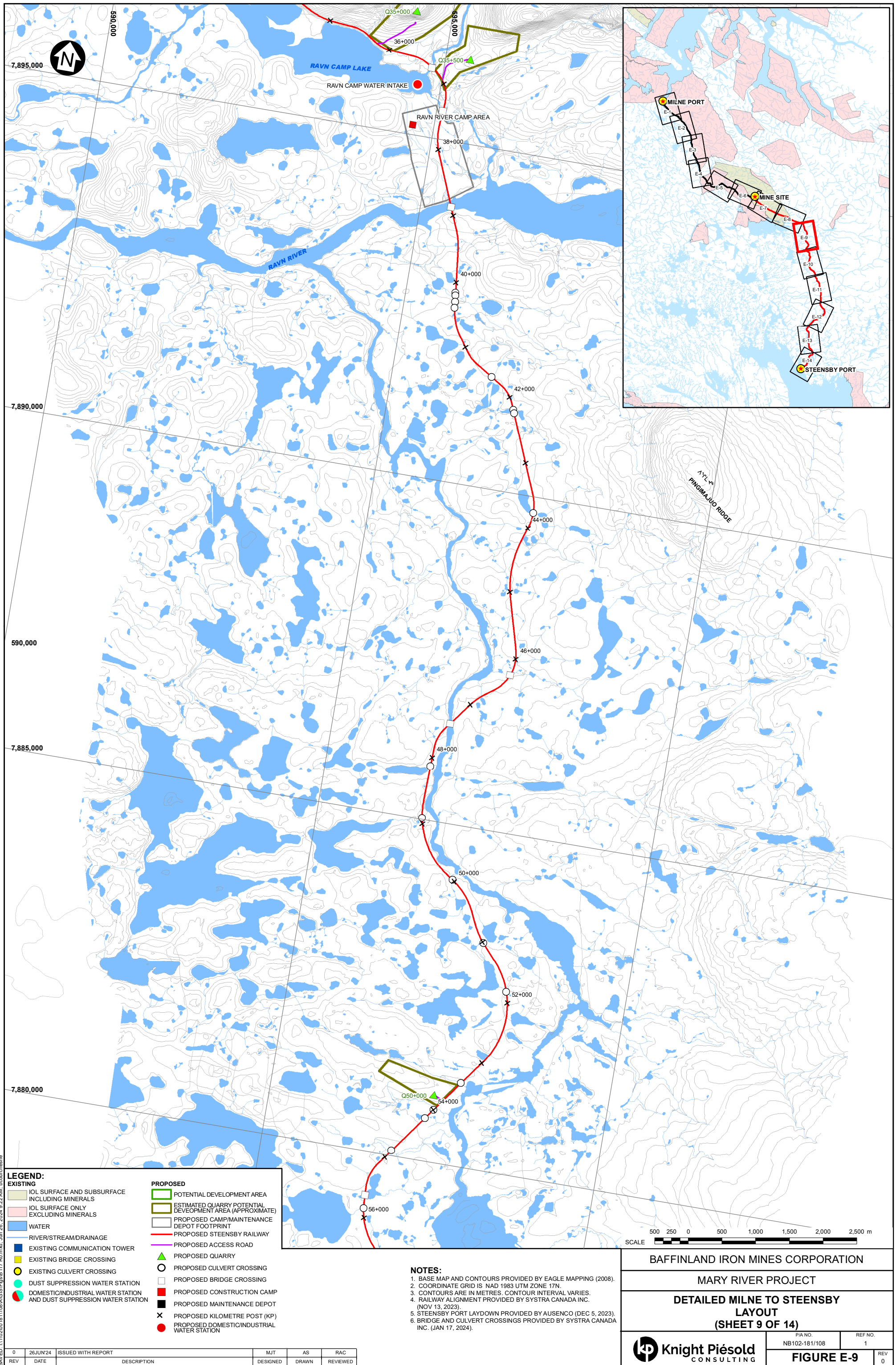


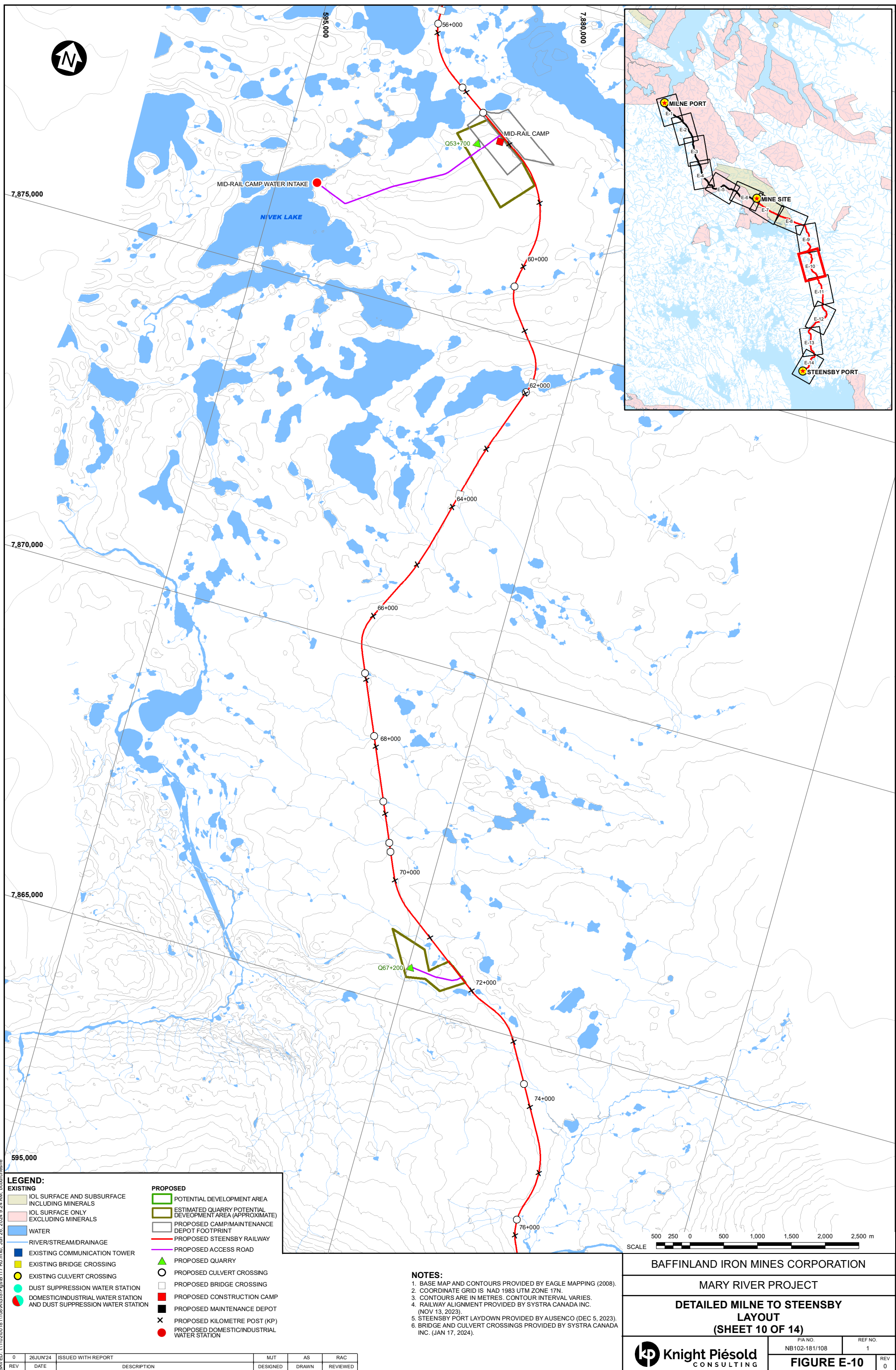


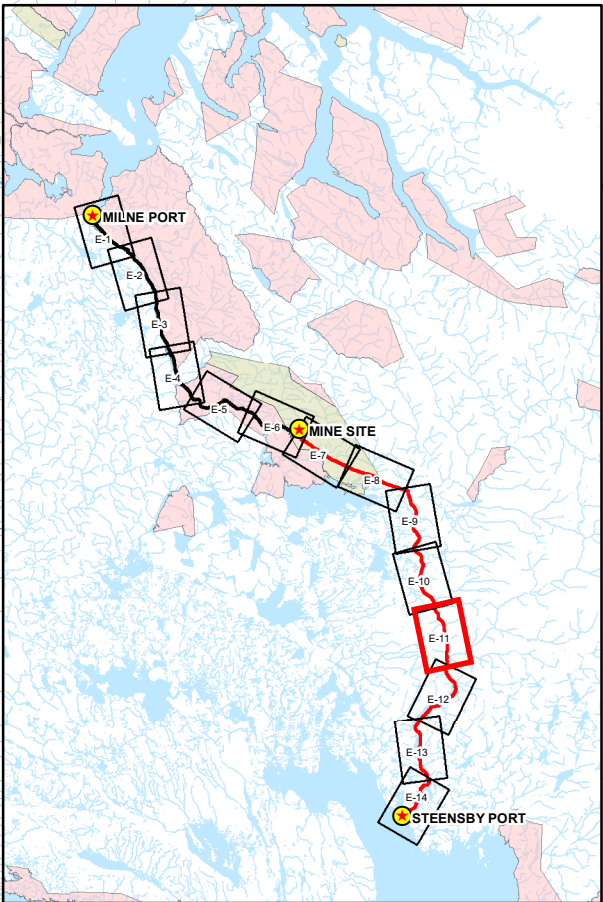
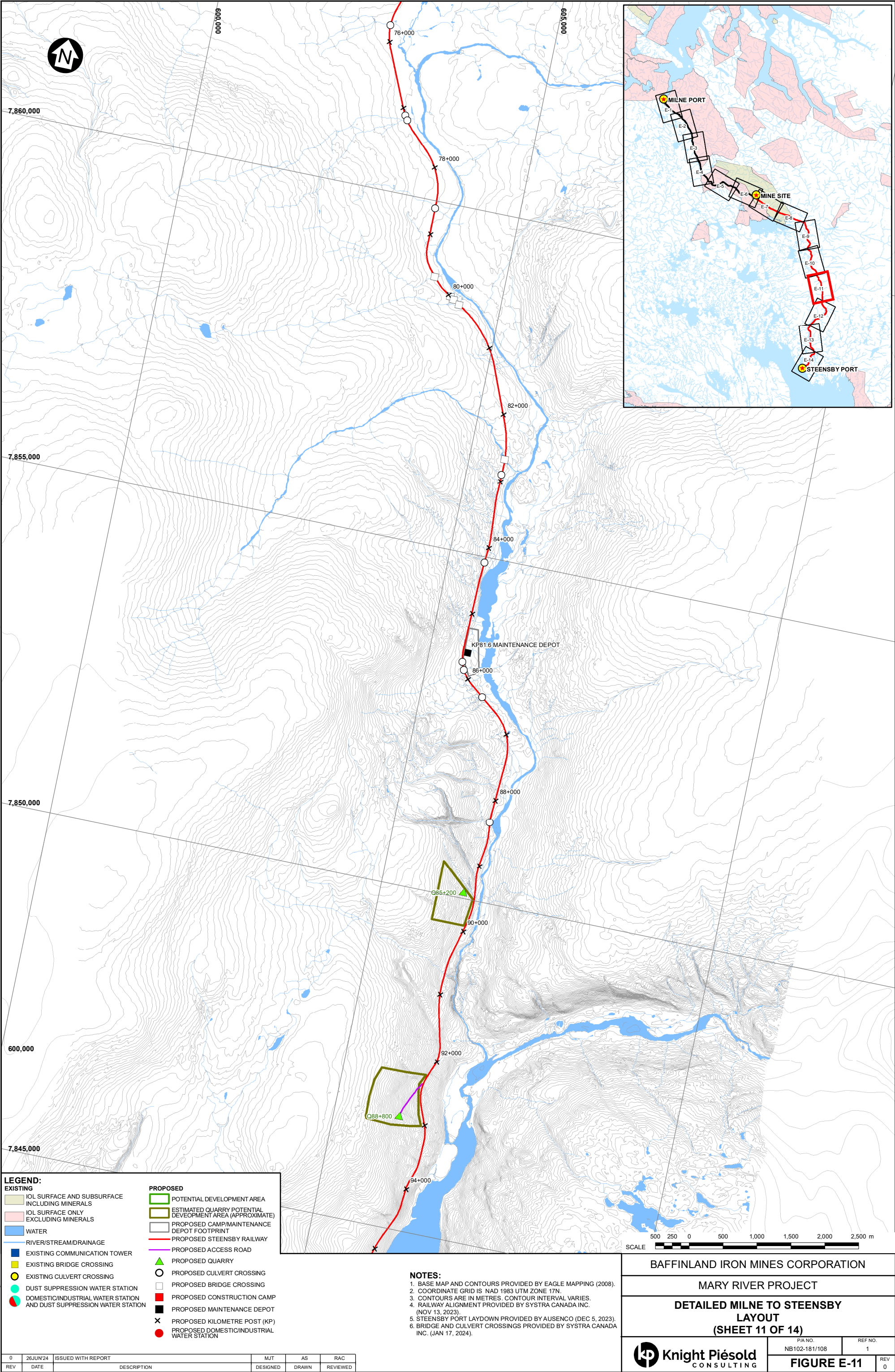


SAVED: 11/10/2020 18:11:08 AIGS\Figs\B 117 R0.mxd: Jun 26 9:19 AM: bbourcheane









LEGEND:
EXISTING
IOL SURFACE AND SUBSURFACE INCLUDING MINERALS
IOL SURFACE ONLY EXCLUDING MINERALS
WATER
RIVER/STREAM/DRAINAGE
EXISTING COMMUNICATION TOWER
EXISTING BRIDGE CROSSING
EXISTING CULVERT CROSSING
DUST SUPPRESSION WATER STATION
DOMESTIC/INDUSTRIAL WATER STATION AND DUST SUPPRESSION WATER STATION

PROPOSED
POTENTIAL DEVELOPMENT AREA
ESTIMATED QUARRY POTENTIAL DEVELOPMENT AREA (APPROXIMATE)
PROPOSED CAMP/MAINTENANCE DEPOT FOOTPRINT
PROPOSED STEENSBY RAILWAY
PROPOSED ACCESS ROAD
PROPOSED QUARRY
PROPOSED CULVERT CROSSING
PROPOSED BRIDGE CROSSING
PROPOSED CONSTRUCTION CAMP
PROPOSED MAINTENANCE DEPOT
PROPOSED KILOMETRE POST (KP)
PROPOSED DOMESTIC/INDUSTRIAL WATER STATION

- NOTES:**
1. BASE MAP AND CONTOURS PROVIDED BY EAGLE MAPPING (2008).
 2. COORDINATE GRID IS NAD 1983 UTM ZONE 17N.
 3. CONTOURS ARE IN METRES. CONTOUR INTERVAL VARIES.
 4. RAILWAY ALIGNMENT PROVIDED BY SYSTRA CANADA INC. (NOV 13, 2023).
 5. STEENSBY PORT LAYDOWN PROVIDED BY AUSENCO (DEC 5, 2023).
 6. BRIDGE AND CULVERT CROSSINGS PROVIDED BY SYSTRA CANADA INC. (JAN 17, 2024).

BAFFINLAND IRON MINES CORPORATION

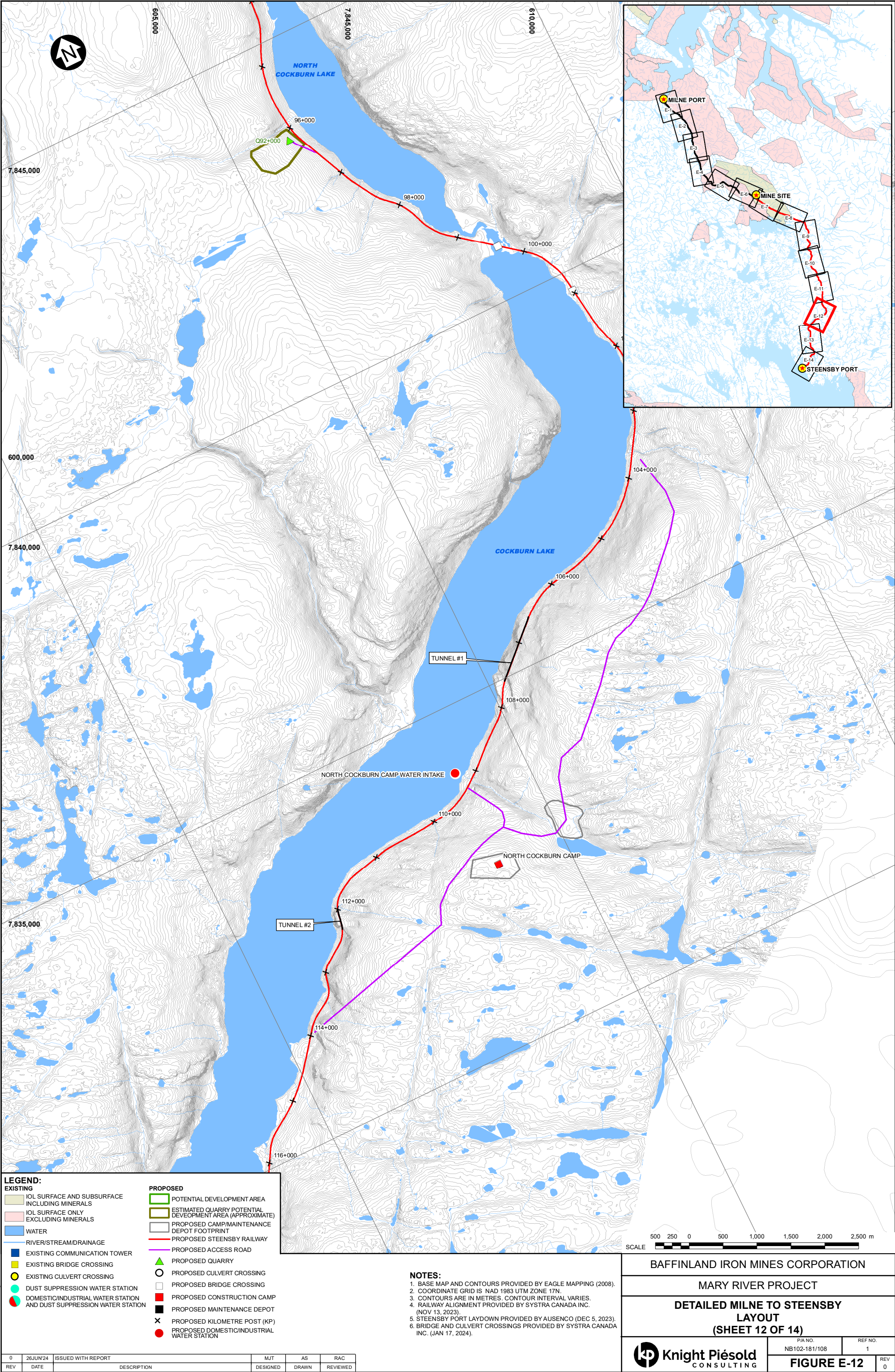
MARY RIVER PROJECT

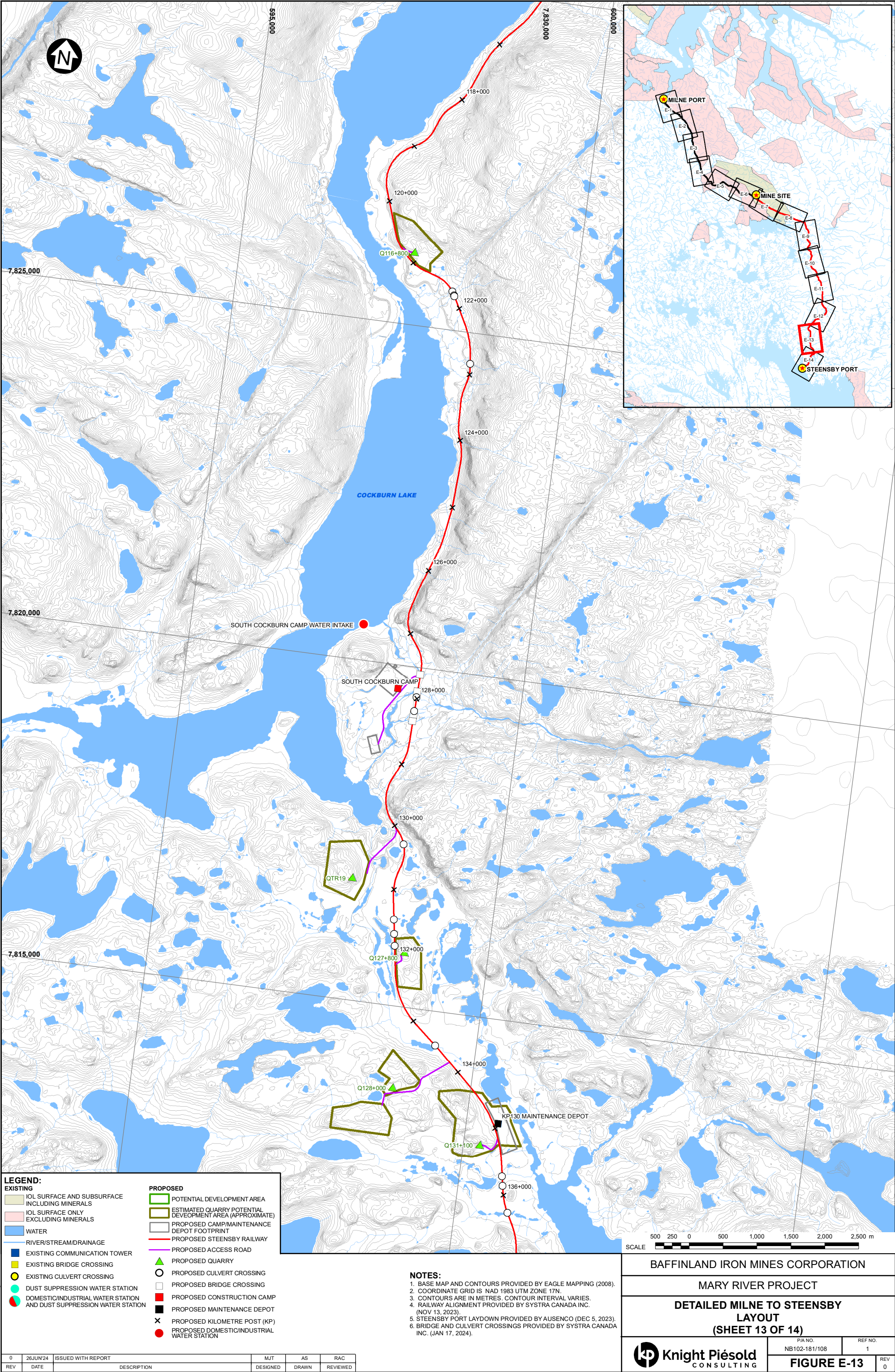
DETAILED MILNE TO STEENSBY LAYOUT
(SHEET 11 OF 14)

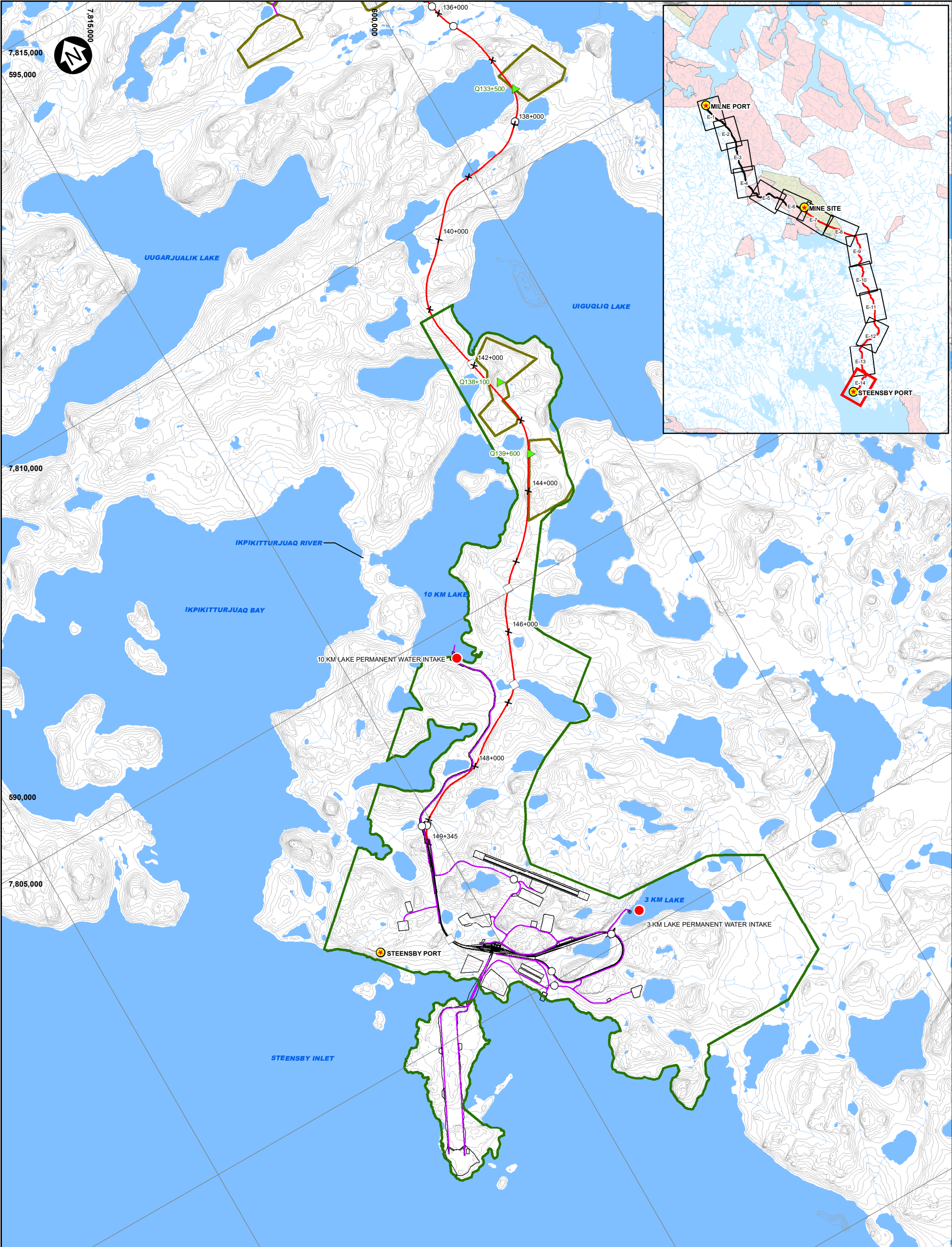
Knight Piésold CONSULTING

PIA NO. NB102-181/108	REF NO. 1
FIGURE E-11	
REV 0	

SAVED: 11/10/2020 11:08 AM I:\GIS\Figs\B 117 R0.mxd; Jun 26, 2024 9:25 AM; bbourchiene







LEGEND:
EXISTING

IOL SURFACE AND SUBSURFACE INCLUDING MINERALS
 IOL SURFACE ONLY EXCLUDING MINERALS
 WATER
 RIVER/STREAM/DRAINAGE
 EXISTING COMMUNICATION TOWER
 EXISTING BRIDGE CROSSING
 EXISTING CULVERT CROSSING
 DUST SUPPRESSION WATER STATION
 DOMESTIC/INDUSTRIAL WATER STATION AND DUST SUPPRESSION WATER STATION

PROPOSED
 POTENTIAL DEVELOPMENT AREA
 ESTIMATED QUARRY POTENTIAL DEVELOPMENT AREA (APPROXIMATE)
 PROPOSED CAMP/MAINTENANCE DEPOT FOOTPRINT
 PROPOSED STEENSBY RAILWAY
 PROPOSED ACCESS ROAD
 PROPOSED QUARRY
 PROPOSED CULVERT CROSSING
 PROPOSED BRIDGE CROSSING
 PROPOSED CONSTRUCTION CAMP
 PROPOSED MAINTENANCE DEPOT
 PROPOSED KILOMETRE POST (KP)
 PROPOSED DOMESTIC/INDUSTRIAL WATER STATION

NOTES:
1. BASE MAP AND CONTOURS PROVIDED BY EAGLE MAPPING (2008).
2. COORDINATE GRID IS NAD 1983 UTM ZONE 17N.
3. CONTOURS ARE IN METRES. CONTOUR INTERVAL VARIES.
4. RAILWAY ALIGNMENT PROVIDED BY SYSTRA CANADA INC. (NOV 13, 2023).
5. STEENSBY PORT LAYDOWN PROVIDED BY AUSENCO (DEC 5, 2023).
6. BRIDGE AND CULVERT CROSSINGS PROVIDED BY SYSTRA CANADA INC. (JAN 17, 2024).

0	26JUN24	ISSUED WITH REPORT		MJT	AS	RAC
REV	DATE	DESCRIPTION		DESIGNED	DRAWN	REVIEWED

BAFFINLAND IRON MINES CORPORATION

MARY RIVER PROJECT

DETAILED MILNE TO STEENSBY LAYOUT
(SHEET 14 OF 14)

Knight Piésold
CONSULTING

PIA NO.
NB102-181/108

REF NO.
1

FIGURE E-14

REV
0