

## **APPENDIX F2**

### **Recent Site Photos**

(Pages F2-1 to F2-114)

**Deposit No.1 (Nuluujaak Pit)**

**Photo 1** – Aerial View of Deposit No. 1 (Nuluujaak Pit) - July 2023

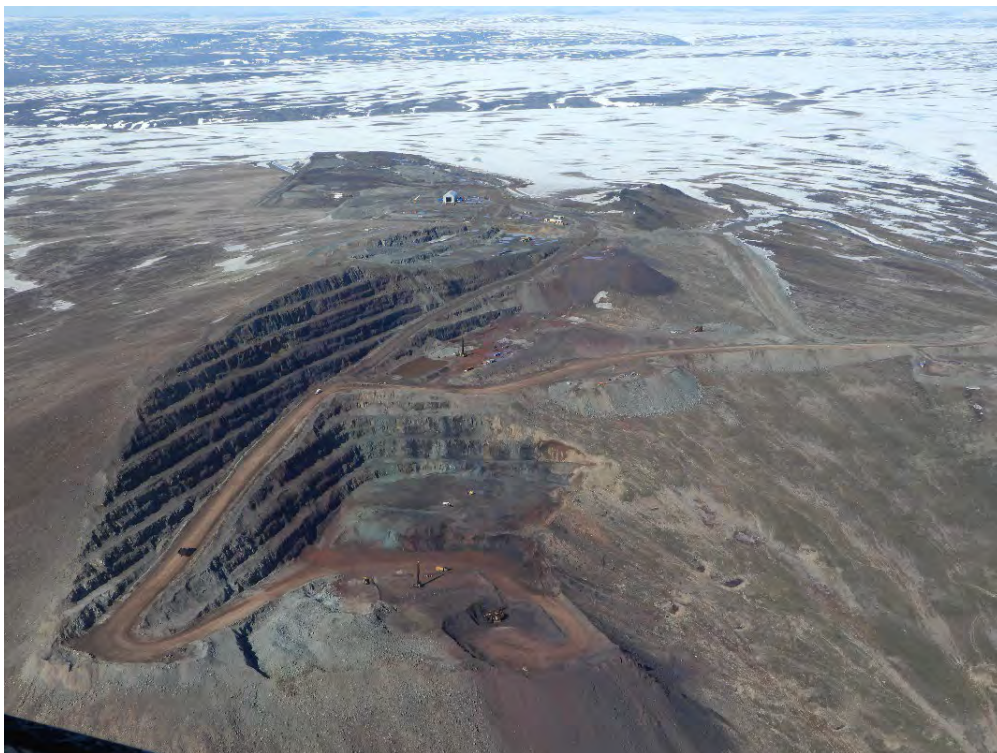


**Photo 2** – Aerial View of Deposit No. 1 (Nuluujaak Pit) – July 2023





**Photo 3** – Deposit No. 1 (Nuluujaak Pit) and Mary River – August 2023



**Photo 4** – Aerial View of Deposit No. 1 (Nuluujaak Pit) and By-Pass Road – July 2023



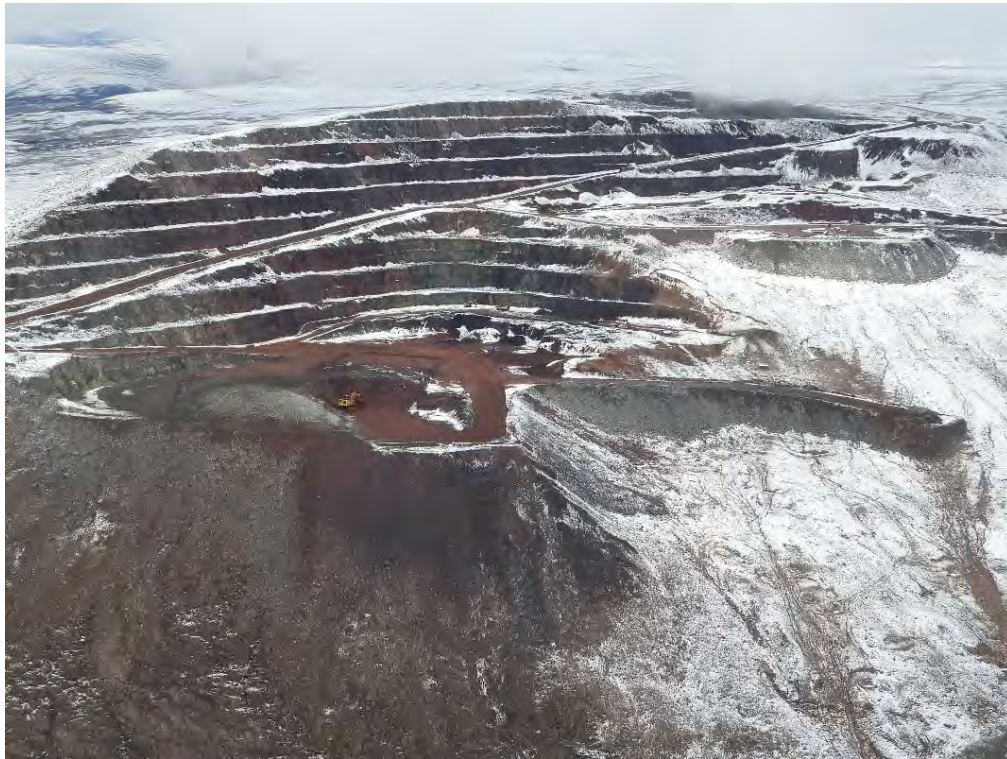


**Photo 5** – Aerial View of By-Pass Road –September 2023



**Photo 6** – Aerial View of Haul Road – July 2023





**Photo 7** – Aerial View of Deposit No. 1 Nuluujaak Pit Wall and Construction of 480 Hill Side Road - September 2023



**Photo 8** – Aerial View of Deposit No. 1 Nuluujaak Pit Wall and Construction of 480 Hill Side Road - September 2023





**Photo 9** – Aerial View of Deposit No. 1 Nuluujaak Pit Wall and Construction of 480 Hill Side Road - September 2023

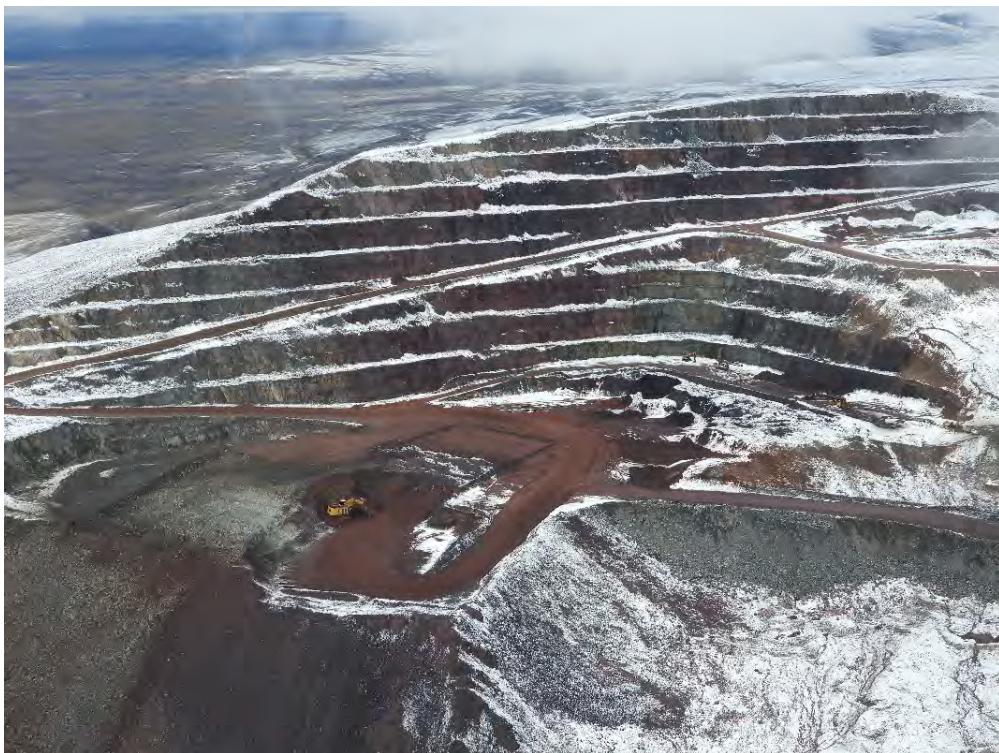


**Photo 10** – Aerial View of 480 Hill Side Road Construction – September 2023





**Photo 11** – Aerial View of Deposit No. 1 Nuluujaak Pit Walls - June 2023

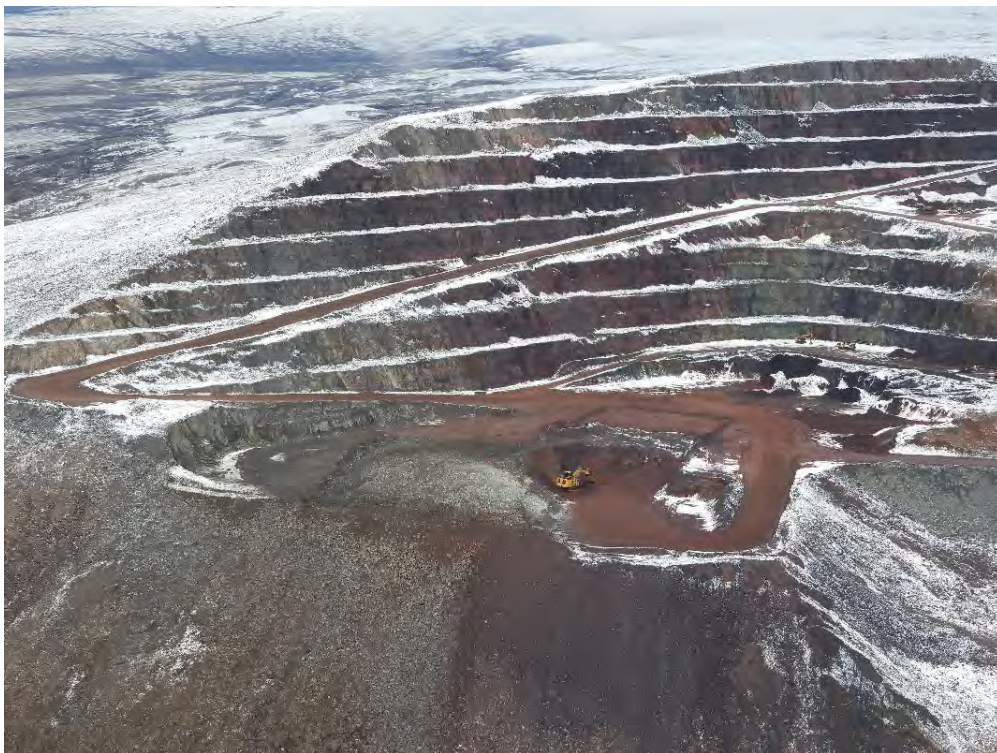


**Photo 12** – Deposit No. 1 Nuluujaak Pit Walls - September 2023





**Photo 13** – Deposit No. 1 Nuluujaak Pit - May 2023



**Photo 14** – Deposit No. 1 Nuluujaak Pit – May 2023





**Photo 15** – Deposit No. 1 Nuluujaak Pit – June 2023



**Photo 16** – Water Management at 570 Bench Laydown – June 2023



**570 Cross-cut Hill Side Road**

**Photo 17** – Aerial View of Cross-cut 570 Hill Side Road – July 2023



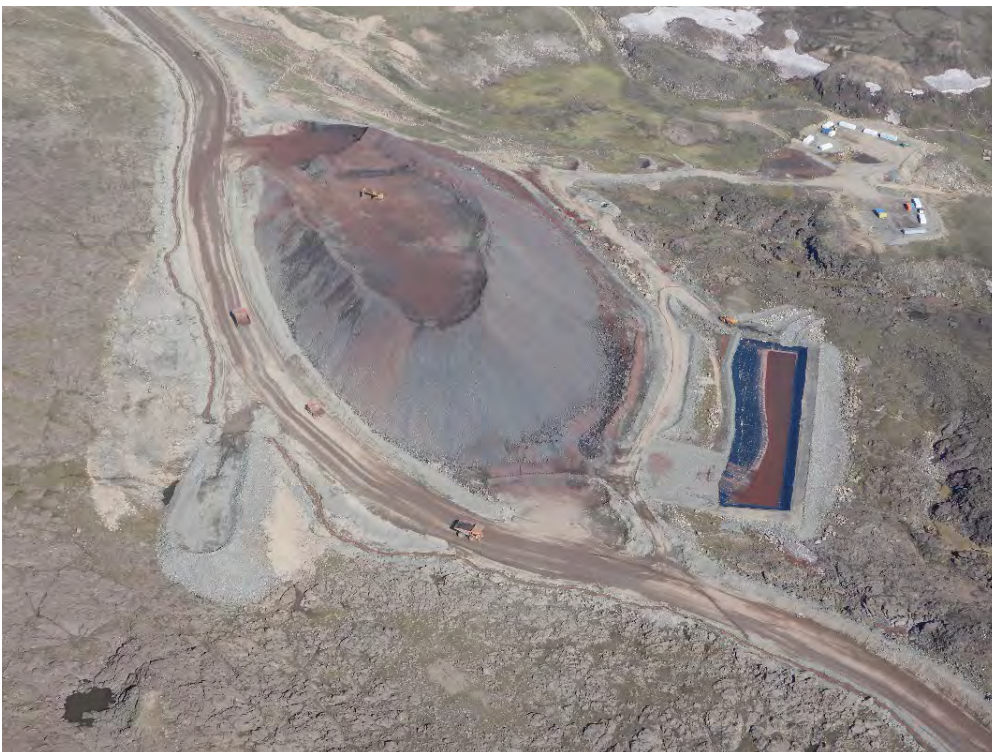
**Photo 18** – Aerial View of Cross-cut 570 Hill Side Road – July 2023



### Run of Mine Ore Stockpile Facility



**Photo 19** – Aerial View of Run of Mine Ore Stockpile Facility – July 2023



**Photo 20** – Aerial View of Run of Mine Ore Stockpile Facility – July 2023





**Photo 21** – Run of Mine Ore Stockpile Facility Surface Water Management Pond (MS-07) – July 2023



**Photo 22** – Run of Mine Ore Stockpile Facility Surface Water Management Pond (MS-07) – July 2023



**Waste Rock Facility**

**Photo 23** – Aerial View of Waste Rock Facility Surface Water Management Pond (MS-08) – September 2023



**Photo 24** – Aerial View of the Waste Rock Facility Water Treatment Plant – September 2023





**Photo 25** – Discharge from Waste Rock Facility Surface Water Management Pond (MS-08)– July 2023



**Photo 26** – Waste Rock Facility Surface Water Management Pond (MS-08) –July 2023





**Photo 27** – Aerial View of Waste Rock Facility – July 2023



**Photo 28** – Aerial View of Waste Rock Facility – September 2023



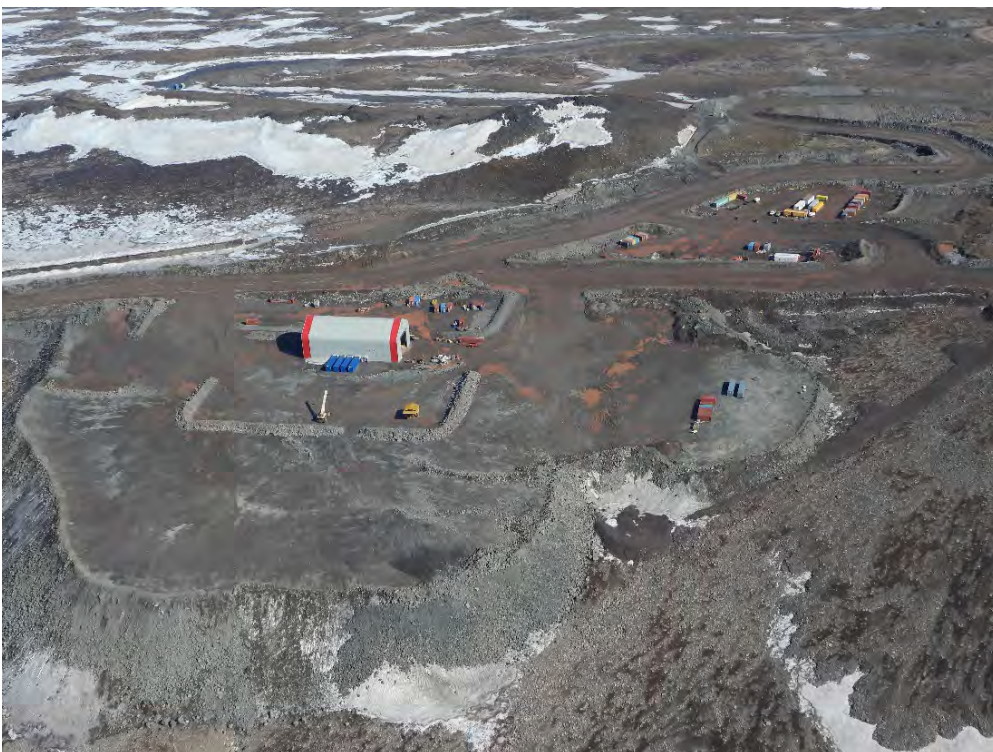


**Photo 29** – Snow Clearing for Freshet Preparation at the Waste Rock Facility – June 2023



**KM110 Laydown**

**Photo 30** – Aerial View of Maintenance Shop at KM110 – September 2023



**Photo 31** – Aerial View of Maintenance Shop and Laydown at KM110 – July 2023





**Photo 32** – Maintenance Shop at KM110 – October 2023



**Mine Haul Road**

**Photo 33** – Aerial View of Mine Haul Road – September 2023



**Photo 34** – Aerial View of Mine Haul Road – September 2023





**Photo 35** – Aerial View of Mine Haul Road – June 2023



**KM105 Surface Water Management Pond**

**Photo 36** – Aerial View of Mine Site KM105 Surface Water Management Pond (MS-11) – July 2023



**Photo 37** – Mine Site KM105 Surface Water Management Pond (MS-11) – June 2023





**Photo 38** – Construction at Mine Site KM105 Surface Water Management Pond (MS-11) for Remediation Activities– November 2023



**Photo 39** – Construction at Mine Site KM105 Surface Water Management Pond (MS-11) for Remediation Activities – November 2023





**Photo 40** – Construction of Geotube Pad at Mine Site KM105 Surface Water Management Pond (MS-11) – August 2023



**Magazine Access Road**

**Photo 41** – Aerial View of Magazine Access Road and Emulsion Storage – June 2023



## KM 104 Laydown



**Photo 42** – Aerial View of KM 104 Laydown – July 2023



**Photo 43** – Aerial View of KM 104 Laydown – June 2023



**Crusher Facility**

**Photo 44** – Aerial View of Mine Site Crusher Facility – July 2023



**Photo 45** – Aerial View of Mine Site Crusher Facility – September 2023





**Photo 46** – Aerial View of Crushing Operations – September 2023



**Photo 47** – Mine Site Crusher Facility Surface Water Management Pond (MS-06)– July 2023





**Photo 48** – Mine Site Crusher Facility Surface Water Management Pond (MS-06) – August 2023



**Photo 49** – Mine Site Crusher Facility Surge Bin Shrouding – January 2023





**Photo 50** – Dust Monitoring Equipment Installation at Mine Site Crusher Facility – October 2023



**Photo 51** – Dust Monitoring at Mine Site Crusher Facility – October 2023





**Photo 52** – Aerial View of Mine Site Mobile Maintenance Buildings – September 2023



**Photo 53** – Aerial View of Mine Site Complex – July 2023



## Tank Farms



**Photo 54** – Aerial View of Mine Site Bulk Fuel Storage Facility (MS-03B) – July 2023



**Photo 56** – Mine Site Bulk Fuel Storage Facility (MS-03B) – October 2023





**Photo 57** – Mine Site Bulk Fuel Storage Facility (MS-03B) – August 2023



**Photo 58** – Aerial View of Mine Site Bulk Fuel Storage Facility (MS-03) and Power Generation Facility – September 2023





**Photo 59** – Mine Site Bulk Fuel Storage Facility (MS-03) – October 2023



**Emulsion Plant**

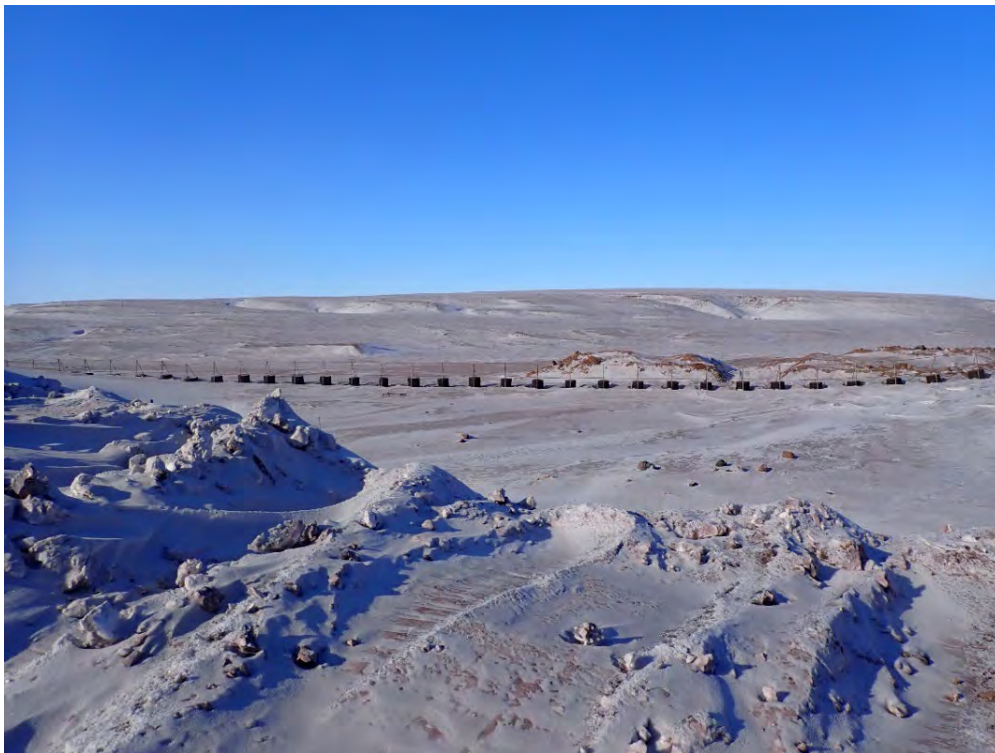
**Photo 60** – Aerial view of Emulsion Plant – September 2023



## Landfill and Landfarm



**Photo 61** – Aerial view of Mine Site Non-Hazardous Waste Landfill and Landfarm Facility – September 2023



**Photo 62** – Mine Site Non-Hazardous Waste Landfill Facility Fence – April 2023



**Photo 63** – Mine Site Non-Hazardous Waste Landfill Facility Fence – May 2023

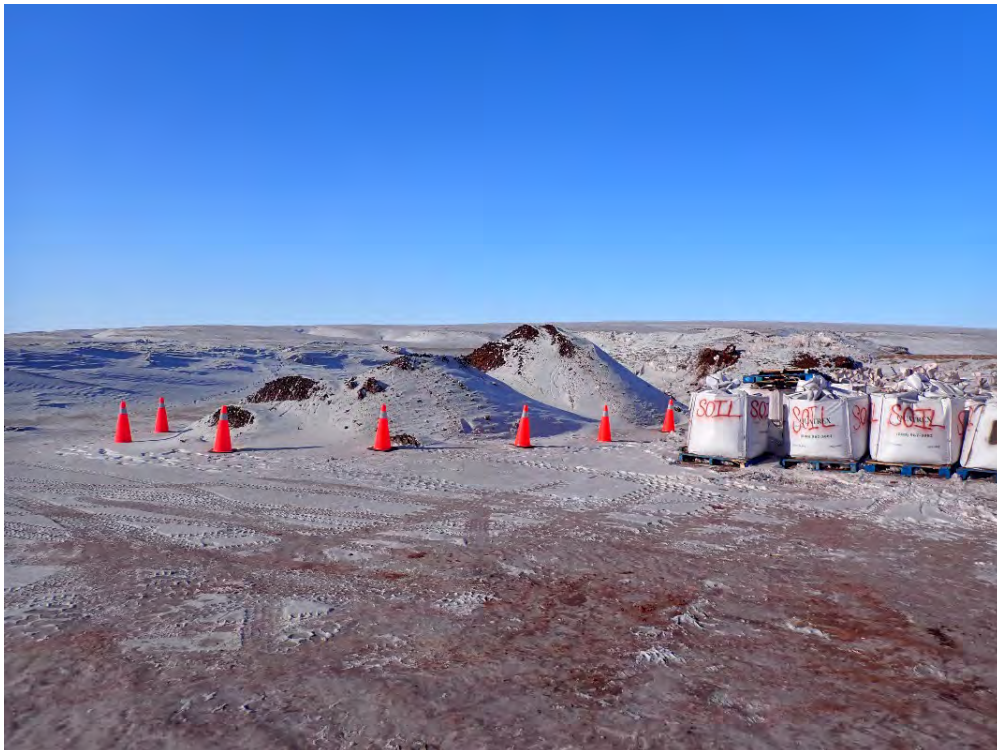


**Photo 64** – Mine Site Landfarm Facility Cell 1 Temporary Staging – February 2023





**Photo 65** – Mine Site Landfarm Facility Cell 1 Temporary Staging – April 2023



**Photo 66** – Mine Site Landfarm Facility Cell 1 Temporary Staging – April 2023



**Photo 67** – Mine Site Landfarm Facility Cell 2 – August 2023



**Sailivik Camp Complex**

**Photo 68** – Sailivik Camp Complex – September 2023



**Photo 69** – Sailivik Camp Complex – June 2023

**Quarry**

**Photo 70** – Aerial View of Mine Site Quarry (QRM2) – July 2023



## Camp Lake



**Photo 71** – Aerial View of Mine Site Jetty and Camp Lake Settling Ponds – June 2023



**Photo 72** – Mine Site Camp Lake Settling Ponds – July 2023



**Mary River Airstrip**

**Photo 73** – Aerial View of Mary River Airstrip – September 2023



**Photo 74** – Aerial View of Mary River Airstrip – September 2023



**Weatherhaven**

**Photo 75** – Aerial View of Mine Site Weatherhaven Complex – September 2023



**Photo 76**– Aerial View of Mine Site Polishing Waste Stabilization Ponds (PWSPs) – September 2023



**Photo 77** – Aerial View of Mine Site Hazardous Waste Berms– June 2023



## Incinerator and Site Services



**Photo 78** – Aerial View of Incinerator Building and Laydown – June 2023



**Photo 79** – Aerial View of Site Services Building and Laydown – September 2023



## OHT Laydown and Laydown 2

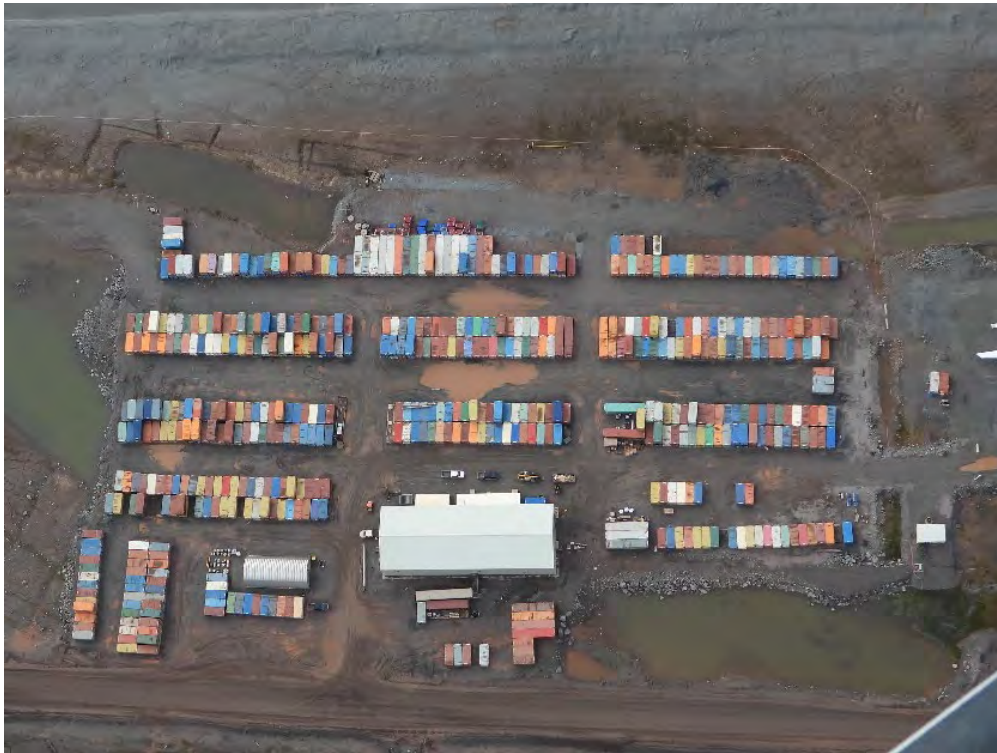


**Photo 80** – Aerial View of OHT Laydown and Laydown 2 – September 2023



**Photo 81** – Aerial View of OHT Laydown and Laydown 2 – September 2023

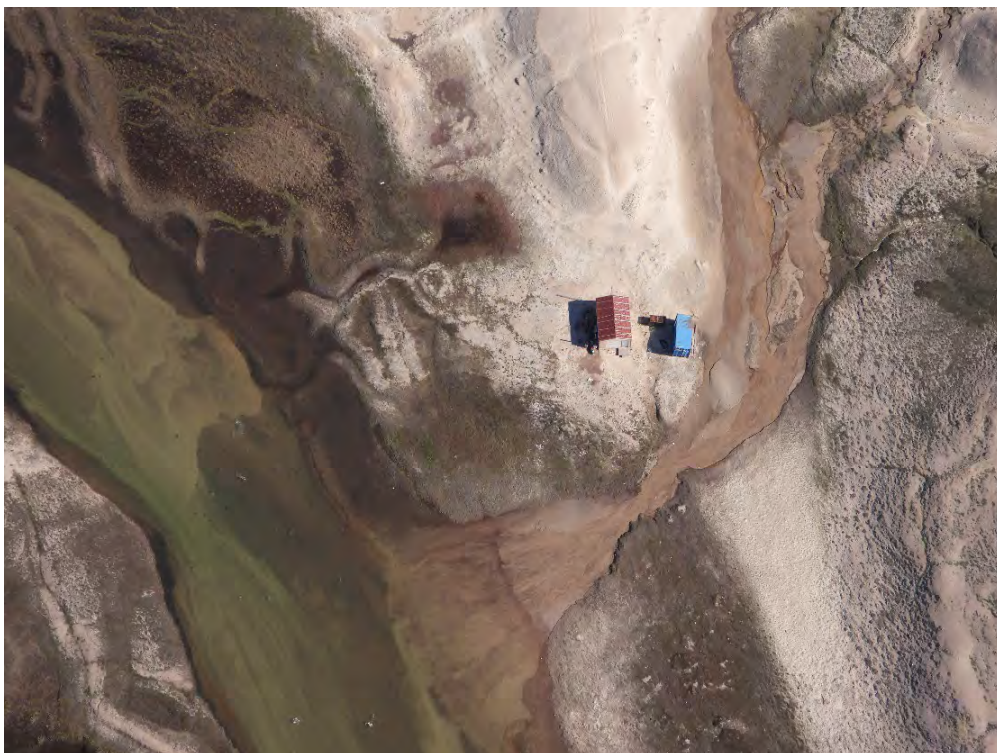




**Photo 83** – Aerial View of Warehouse Building and Laydown – September 2023

**HTO Cabin**

**Photo 84** – Aerial View of Mine Site HTO Cabin– July 2023



**Photo 85** – Aerial View of Mine Site HTO Cabin– July 2023



**Surface Water Management**

**Photo 86** – ESC Installation – August 2023



**Photo 87** – ESC Installation Upstream of CV-187 – June 2023



**Photo 88** – Freshet Preparation at Laydown 2 – March 2023



**Photo 89** – Freshet Preparation at Culvert CV-187 – April 2023





**Photo 90** – Freshet Preparation at Weatherhaven Complex – March 2023



**Photo 91** – Freshet Preparation at Landfill Access Road Snow Stockpile



**Photo 92** – Freshet Preparation at Landfill Access Road Snow Stockpile