

Tote Road - KM 100 to KM 90



Photo 1 – Aerial View of Open Burn Laydown at KM98 – September 2023



Photo 2 – Aerial View of KM97 Bridge Crossing – August 2023



Photo 3 – Aerial View of KM97 Laydown – September 2023



Photo 4 – Snowmobile Crossing Sign at KM90 –April 2023

Tote Road – KM 80 to KM 60

Photo 5 – Aerial View of KM80 Laydown and Bridge – September 2023



Photo 6 – KM80 Bridge Crossing – July 2023



Photo 7 – KM80 Ice Crossing Decommissioning – May 2023



Photo 8 – Aerial View of KM 63 Bridge – September 2023



Photo 9 – KM63 Bridge Crossing – July 2023

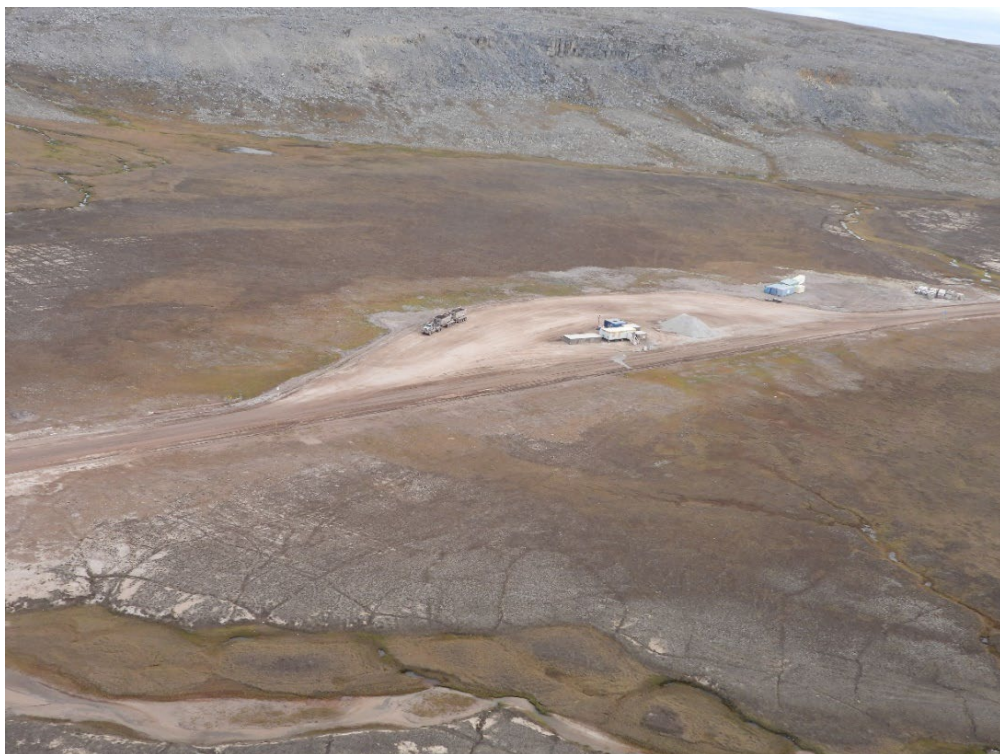


Photo 10 – Aerial of loaded Ore Haul Truck Parked at KM60 Rest Stop – September 2023

Tote Road – KM 17

Photo 11 – Aerial View of KM17 Bridge with Flat Deck Truck Crossing –September 2023



Photo 12 – Dust Suppression Water Withdrawal Log at KM17 Bridge – June 2023



Photo 13 – Excavator removing old KM17 Bridge Abutment with Silt Curtain in place– August 2023

Tote Road – Dust Suppression and Maintenance

Photo 14 – Dust Suppression Water Truck at KM60 Construction Site – September 2023



Photo 15 – Dust Suppression Water Truck on Tote Road at KM52.5 – August 2023



Photo 16 – 740 Water Truck applying dust suppression - June 2023

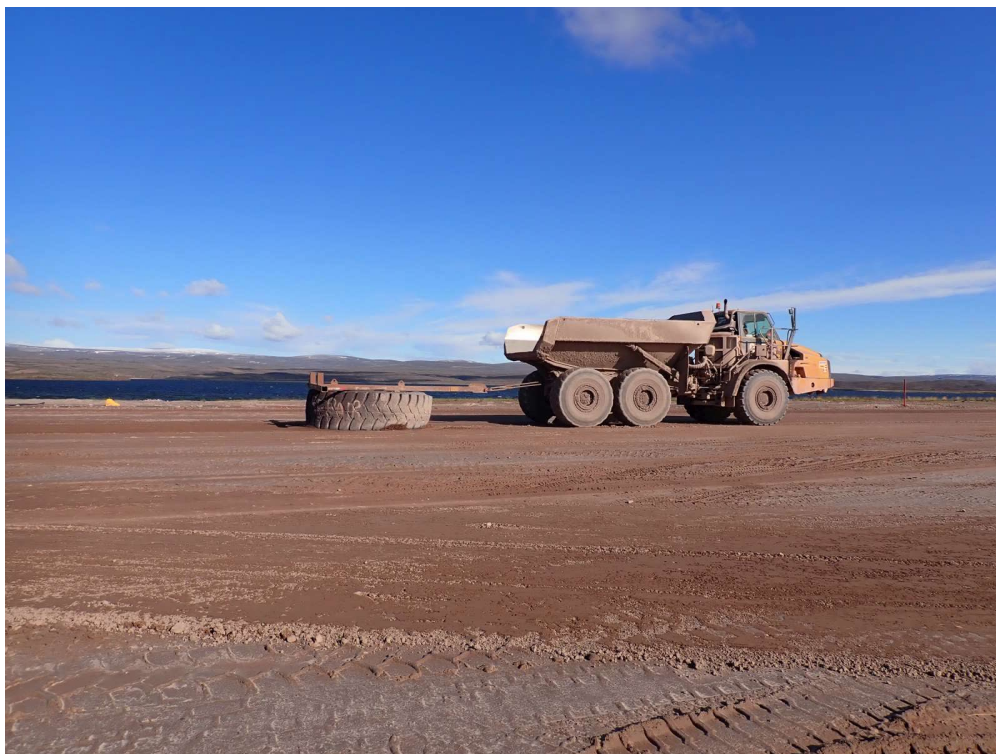


Photo 17 – 740 Tire Drag at KM 80 on Tote Road – July 2023



Photo 18– 740 Tire Drag at KM 17 on Tote Road – August 2023



Photo 19 – Grading Maintaining Tote Road Surface - September 2023

Tote Road – General

Photo 20 – Loaded OHT Travelling North – September 2023



Photo 21 - 740 Water Truck Applying Dust Suppression - June 2023

Tote Road - Crossings

Photo 22 – Waterway upstream from CV-040 at KM 72 with northbound OHT ascending hill – June 2023



Photo 23 – Culvert BG-29 – August 2023



Photo 24 – Culvert CV-076 – August 2023



Tote Road – Monitoring



Photo 25 – Installation of sediment traps at KM 37 CV-099 - August 2023

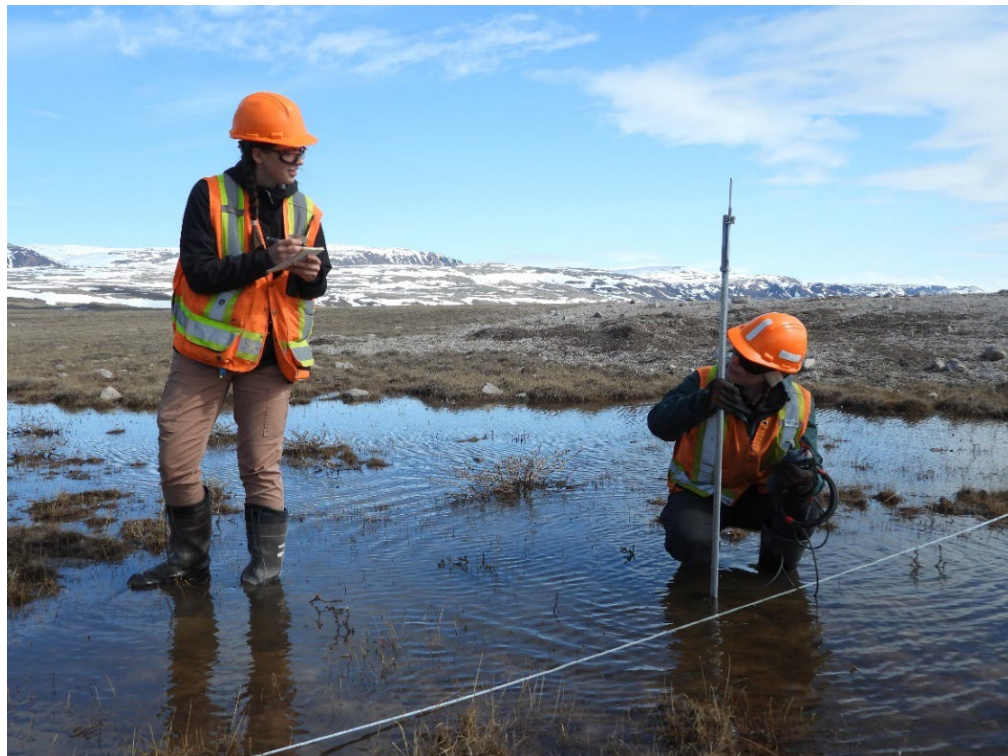


Photo 26 – Routine Tote Road Water Quality Monitoring – June 2023



Photo 27 – Routine Tote Road Water Quality Monitoring – June 2023



Photo 28 – Installation of End-of-Pipe Fish Screen at KM80 – July 2023

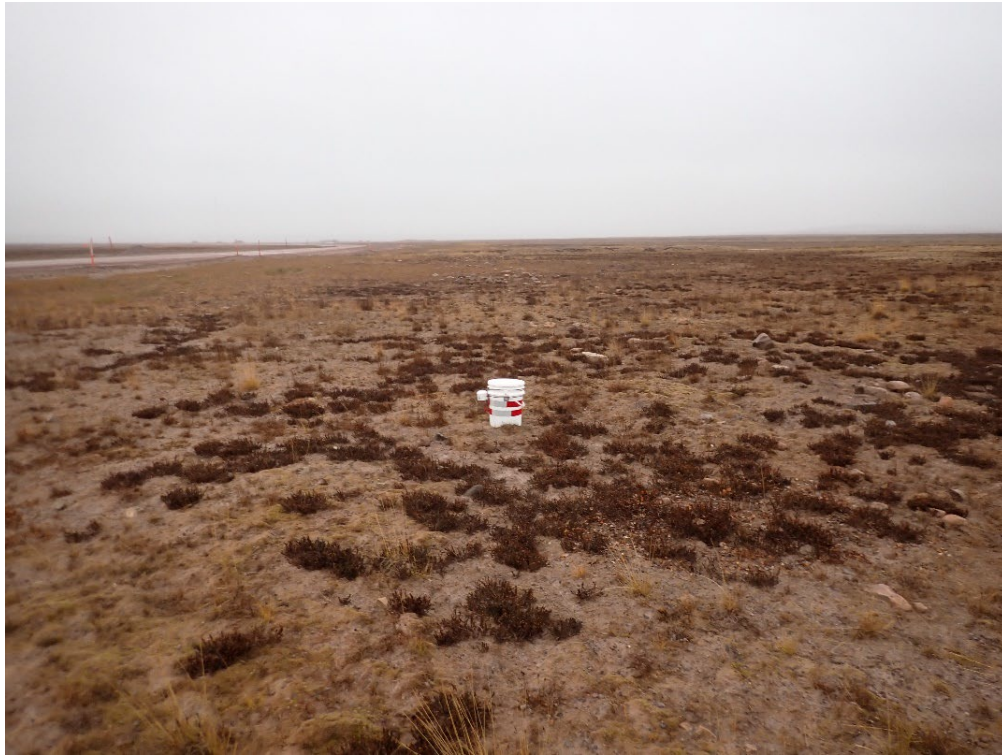


Photo 29 – Installation of PurpleAir Dust Monitor at KM78 – September 2023

Tote Road – Snow Stockpiles and Winter Monitoring



Photo 30 – Tote Road KM76.5 Snow Stockpile – February 2023



Photo 31 – Tote Road KM97 Snow Stockpile – February 2023



Photo 32 – Snow Bank Height Survey – February 2023



Photo 33 – Feathering Snow Banks at KM9 - April 2023



Photo 34 – Arctic Fox Observed KM 73 during Snow Track Survey – October 2023



Photo 35 – Ptarmigan Tracks Observed at KM94 during Snow Track Survey – October 2023



Photo 36 - Winter Dustfall Program – March 2023



Photo 37 – Winter Dustfall Program – March 2023



Photo 38 –Height of Land Caribou Survey – June 2023

Tote Road – Erosion and Sediment Controls

Photo 39 – Silt Fence Installation at KM 75– August 2023



Photo 40 – Swale reinforced with armor stone and Silt Fence Installation at KM 53 – August 2023



Photo 41 – Installation of Ditch Armouring, Check Dams, and Silt Fencing at KM94 – July 2023



Photo 42 – Installation of Ditch Armouring, Check Dams, and Silt Fencing at KM94 – July 2023