

Milne Port - Waterfront

Photo 1 – Aerial View of Milne Port – September 2023



Photo 2 – Aerial view of Milne Port and Ship loader – August 2023



Photo 3 – View of the ship Golden Freeze August 2023



Photo 4 – Three Ore Carrier Ships in Milne Port – August 2023

Ore Stockpile Area

Photo 5 – Aerial View of Ore Pad Facility – August 2023



Photo 6 – Aerial View of Ore Pad Facility – August 2023



Photo 7 – Aerial View of West Ore Pad Surface Water Management Pond (MP-06) – July 2023



Photo 8 – Northwest Ore Pad Surface Water Management Pond (MP-06) – July 2023



Photo 9– Aerial View of East Ore Pad Surface Water Management Pond (MP-05) – July 2023



Photo 10 – Aerial View of East Ore Pad Surface Water Management Pond (MP-05) – July 2023



Photo 11 – East Ore Pad Surface Water Management Pond (MP-05) – September 2023



Photo 12 – Aerial View of Freight Dock and B1 Pad — September 2023

Bulk Fuel Storage and Infrastructure

Photo 13 – Aerial View of Steel Tank Bulk Fuel Storage Facility (MP-03) – August 2023



Photo 14 – Aerial View of Generators, Maintenance Shops, Incinerator Building and PSC – August 2023



Photo 15 – Aerial View of Polishing Waste Stabilization Pond (MP-01A) and Generators – August 2023

Quarries

Photo 16 – Aerial View of Quarry (Q1) – July 2023



Photo 17 – Aerial View of Quarry (Q1) – July 2023

Accommodations

Photo 18 – Aerial View of the 380 Person Camp - July 2023

Infrastructure

Photo 19 – Aerial view of Landfarm (MP-04) and Contaminated Snow Berm (MP-04A) – August 2023



Photo 20 – Aerial View of L2 and R3 Laydowns along Tote Road – August 2023

Monitoring Programs

Photo 21 – Hydrology Monitoring at SNP Site (MP-C-K) – June 2023



Photo 22 – Routine Sampling at SNP Site (MP-C-H) – June 2023

Milne Port – Fuel Handling

Photo 23 – Bulk Fuel Tanker in Milne Inlet – September 2023



Photo 24 – Oil Pollution Emergency Plan (OPEP) Spill Response Training Exercise – July 2023



Photo 25– Oil Pollution Emergency Plan (OPEP) Spill Response Training Exercise – July 2023

Hunter and Trappers

Photo 26 –Milne Inlet HTO Cabin– October 2023

Marine Environmental Effects Monitoring

Photo 27 –Research Vessel conducting Marine Environmental Effects Monitoring Plan (MEEMP) – July 2023



Photo 28– Divers conducting MEEMP monitoring – September 2023

Air Monitoring

Photo 29 – Routine Dustfall Site Visit (DF-P-04) – August 2023



Photo 30 – Meteorological Tower Station East of Milne Port – July 2023

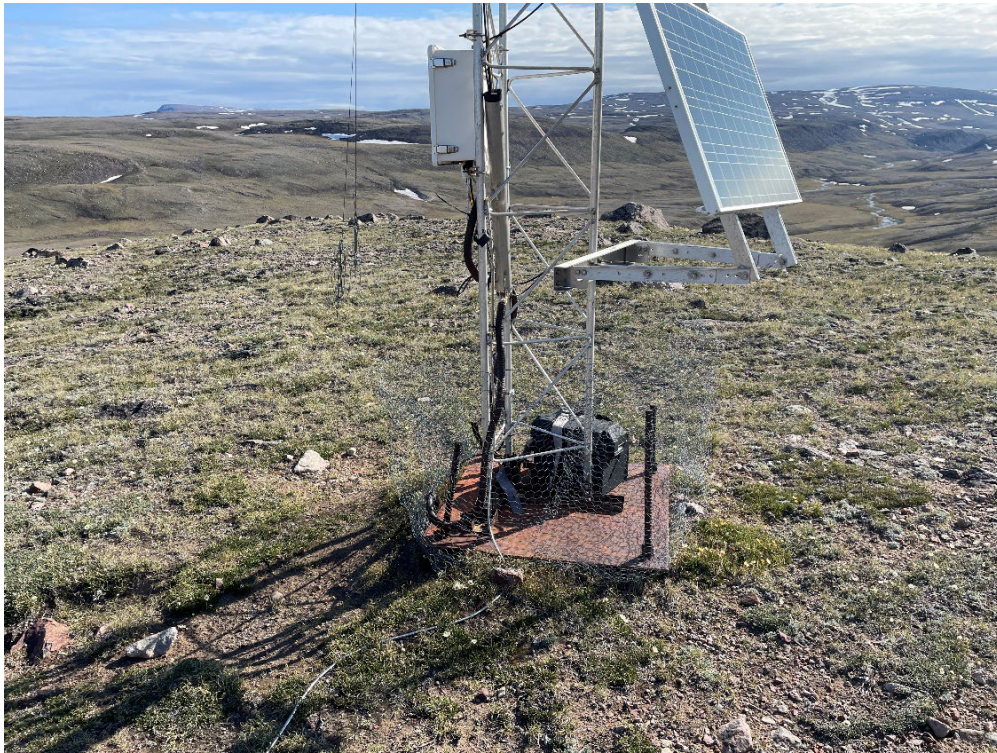


Photo 31 – Meteorological Tower Station East of Milne Port – July 2023



Photo 32 – Beta Attenuation Monitor (BAM 1020) Unit Inside Port Site Complex (PSC) – June 2023

Decommissioning

Photo 33 – Aerial view of decommissioned Matrix Camp Laydown - September 2023

Dust Suppression

Photo 34 – Dust Suppression at Ore Pad – January 2023



Photo 35 – 740 Water Truck Suppressing Dust OHT Laydown – June 2023

Pond Monitoring

Photo 36 – Pond Discharge Monitoring at MP-05 – June 2023



Photo 37 – Bird Deterrent Installation at MP-04 – June 2023